

# E120 User Manual



## Important safety precautions

This section contains important information on the safe and efficient operation of your mobile device.

For your safety, please refer to the guideline prior to using the phone.

**Note:** Failure to comply with the following precautions may be dangerous or illegal.

### Drive safely at all times

Do not use a hand-held phone while driving. Park the vehicle first.

### Switch off the phone when refueling

Do not use the phone at a refueling point (service station) or near fuels or chemicals.

### Switch off in an aircraft

Wireless phones can cause interference. Using them in an aircraft is both illegal and dangerous.

### Switch off the phone near all medical equipment

Hospitals or health care facilities may be using equipment that could

be sensitive to external radio frequency energy. Follow any regulations or rules in force.

### **Interference**

All wireless phones may be subject to interference, which could affect their performance.

### **Be aware of special regulations**

Meet any special regulations in force in any area and always switch off your phone whenever it is forbidden to use it, or when it may cause interference or danger.

### **Water resistance**

Your phone is not water-resistant. Keep it dry.

### **Sensible use**

Use only in the normal position (held to the ear). Avoid unnecessary contact with the antenna when the phone is switched on.

### **Keep your phone away from small children**

Keep the phone and all its parts, including accessories, out of the reach of small children.

### **Accessories and batteries**

Use only **FLY**-approved batteries and accessories, such as headsets and PC data cables. Use of any unauthorized accessories could damage you and your phone and may be dangerous.

If jewelry, keys, beaded chains, or other conductive materials touch exposed battery terminals, this could complete an electrical circuit (short circuit), become very hot, and could cause damage or injury. Be careful when handling a charged battery, particularly when placing it inside a pocket, purse, or other container with metal objects.

- Never use a charger or battery that is damaged in any way.
- Use the battery only for its intended purpose.
- If you use the phone near the network's base station, it uses less power. Talk and standby time are greatly affected by the signal strength on the cellular network and the parameters set by the network operator.

- Battery charging time depends on the remaining battery charge, the type of battery, and the charger used. The battery can be charged and discharged hundreds of times, but it will gradually wear out. When the operation time is noticeably shorter than normal, it is time to buy a new battery.
- If left unused, a fully charged battery will discharge itself over time.
- Use only **FLY**-approved batteries, and recharge your battery only with **FLY**-approved chargers. Disconnect the charger from the power source when it is not in use. Do not leave the battery connected to a charger for more than a week, since overcharging may shorten its life.
- Extreme temperatures will affect the charging capacity of your battery: it may require cooling or warming first.
- Do not leave the battery in hot or cold places because the capacity and lifetime of the battery will be reduced. Try to keep the battery at room temperature. A phone with a hot or cold battery may not work temporarily, even when the battery is fully charged.
- Do not short-circuit the battery. Accidental short-circuiting can occur when a metallic object like a coin, clip or pen causes a direct connection between the + and – terminals of the battery (metal strips on the battery). For example, do not carry a spare battery in a pocket or bag where the battery may contact metal objects. Short-circuiting the terminals may damage the battery or the object causing the short-circuiting.
- Dispose of used batteries in accordance with local regulations. Always recycle. Do not dispose of batteries in a fire.
- The phone could explode if the battery is replaced with an incorrect type.
- Dispose of used batteries according to the manufacturer's instructions.
- At very high volumes, prolonged listening to a headset can damage your hearing.
- To avoid risk of personal injury, do not dispose of your battery in a fire.
- Do not throw your battery or mobile device in the trash.

### **Charger Operation**

Please, read this manual before using the charger, for the correct

operation of the appliance.

#### Important Safety Instructions

The charger should be used for Li-Ion accumulators charging only.

- Do not charge other types of accumulators with this charger.
- Do not expose the charger to moisture or rain.
- Do not disassemble the charger or the network adapter.
- Unplug the network adapter when not in use.
- Do not connect this charger with the appliances or peripheral devices, which are not indicated in this booklet.
- It is not recommended to discharge the Li-Ion accumulator before charging.
- For pluggable equipment, the socket-outlet shall be installed near the equipment and shall be easily accessible. **The only way to turn off the charger is to unplug it.**
- 
- Mobile phone shall only be connected to a USB interface that meets the requirements of a Limited Power Source according to EN 60950-1

#### Recycling of accumulators

Accumulators should be disposed in accordance with established rules.

It is forbidden to throw away accumulators along with domestic garbage. If possible, use specialized organizations services for accumulators recycling.

#### **Damaged Products**

If your mobile device or battery has been submerged in water, punctured, or subjected to a severe fall, do not use it until you take it to **FLY**-Authorized and/or Qualified Service Center. Do not attempt to dry it with an external heat source, such as a microwave oven.

#### **Choking Hazards**

Your mobile device or its accessories may include detachable parts, which may present a choking hazard to small children. Keep your mobile device and its accessories away from small children.

#### **Road safety**

Your wireless phone gives you the powerful ability to communicate by voice, almost anywhere, anytime. But an important responsibility accompanies the benefits of wireless phones, one that every user must uphold. When driving a car, driving is your first responsibility. When using your wireless phone while driving, follow local regulations in the country or region you are in.

#### **Use and Care**

Your phone is a product of superior design and craftsmanship and should be treated with care. The suggestions below will help you fulfill any warranty obligations and allow you to enjoy this product for many years.

- Keep the phone and all its parts and accessories out of the reach of small children and pets. They accidentally damage these things or choke on small parts.
- Keep the phone dry. Precipitation, humidity, and liquids contain minerals that corrode electronic circuits.
- Do not use the phone with a wet hand. Doing so may cause an electric shock to you or damage to the phone.
- Do not use or store the phone in dusty, dirty areas, as its moving parts may be damaged.
- Do not store the phone in hot areas. High temperatures can shorten the life of electronic devices, damage batteries, and warp or melt certain plastics.
- Do not store the phone in cold areas. When the phone warms up to its normal operating temperature, moisture can form inside the phone, which may damage the phone's electronic circuit boards.
- Do not drop, knock, or shake the phone. Rough handling can break internal circuit boards.
- Do not use harsh chemicals, cleaning solvents, or strong detergents to clean the phone. Wipe it with a soft cloth slightly dampened in a mild soap-and-water solution.
- Do not paint the phone. Paint can clog the device's moving parts and prevent proper operation.
- Do not put the phone in or on heating devices, such as a microwave oven, stove, or radiator. The phone may explode when overheated.

- When the phone or battery gets wet, phone repairs are no longer guaranteed by the manufacturer's warranty, even if the warranty for your phone has not expired.
- If your phone has a flash or light, do not use it too close to the eyes of people or animals. This may cause damage to their eyes.
- Use only the supplied or an approved replacement antenna. Unauthorized antennas or modified accessories may damage the phone and violate regulations governing radio devices.
- Do not attempt to open the phone's casing. Non-expert handling of the phone may cause damages to your phone.
- If the phone or any of its accessories are not working properly, take them to your nearest qualified service center. The personnel there will assist you, and if necessary, arrange for the phone to be repaired.
- Using the earpieces or stereo headset for extended time can cause a serious damage to your hearing. Exposing sound higher than 100db for a long time, you will get possible ear damage that could result from extensive usage of audio playback. You are strongly advised to check the volume level to medium before using.
- Do not use the phone while charging the phone. You may be electric-shocked if you use the phone while charging the phone with the USB data cable or the battery charger. Make sure to disconnect the USB data cable or the charger before using the phone.
- Don't expose your phone to water, rain, extreme humidity, sweat, or other moisture.
- Extreme heat or cold ;Avoid temperatures below -10°C/14°F or above 40°C/104°F
- Don't expose your phone to dust, dirt, sand, food, or other inappropriate materials.

### **Operating Environment**

- Remember to follow any special regulations in force in the area you are in, and always switch off your phone whenever it is forbidden to use it, or when it may cause interference or danger. When connecting the phone or any accessory to another device, read its user's guide for detailed safety instructions. Do not connect incompatible products.
- Operation of any radio-transmitting equipment, including cellular

phones, may interfere with inadequately protected medical devices. Consult a doctor or the manufacturer of the medical device if you have any questions. Other electronic equipment may also be subject to interference.

- As with other mobile radio-transmitting equipment, you are advised that for satisfactory operations and personal safety, the equipment should only be used in the normal operating position.
- Always switch off the phone when refueling (service station). You are reminded of the need to observe restrictions on the use of radio equipment in fuel depots (fuel storage and distribution areas), chemical plants or where blasting operations are in progress.
- Do not store or carry flammable liquids, gases or explosive materials in the same compartment as the phone, its parts or accessories.
- Switch off your cellular phone when in aircraft. The use of cellular phones in aircraft is illegal and may be dangerous to the operation of the aircraft or disrupt the cellular network. Failure to observe these instructions may lead to the suspension or denial of cellular telephone services to the offender, legal action or both.
- As with other mobile radio transmitting equipment, users are advised that for the satisfactory operation of the equipment and for the safety of personnel, it is recommended that the equipment should only be used in the normal operating position (held to your ear with the antenna pointing over your shoulder).

### **Electronic devices**

Most modern electronic equipment is shielded from radio frequency (RF) signals. However, certain electronic equipment may not be shielded against the RF signals from your wireless phone. Consult the manufacturer to discuss alternatives.

### **Pacemakers**

Pacemaker manufacturers recommend that a minimum distance of 15 cm (6 inches) be maintained between a wireless phone and a pacemaker to avoid potential interference with the pacemaker. These recommendations are consistent with the independent research and recommendations of Wireless Technology Research. If you have any reason to suspect that interference is taking place, switch you're your

phone immediately.

### **Hearing aids**

Some digital wireless phones may interfere with some hearing aids. In the event of such interference, you may wish to consult your hearing aid manufacturer to discuss alternatives.

### **Radio frequency (RF) exposure and SAR**

This phone meets the requirements concerning exposure to radio waves. Your mobile phone is a radio transmitter and receiver. It is designed and manufactured to not exceed the limits for exposure to radiofrequency (RF) energy, as recommended by the Council of the European Union. These limits are part of comprehensive guidelines and establish permitted levels of RF energy for the general population. The guidelines were developed by independent scientific organizations through the periodic and thorough evaluation of scientific studies. The limits include a substantial safety margin designed to ensure the safety of all persons, regardless of age and health. The exposure standard for mobile phones employs a unit of measurement known as Specific Absorption Rate (SAR). Specific Absorption Rate (SAR) is the unit of measurement for the amount of radio frequency energy absorbed by the body when using a mobile phone. The SAR value is determined at the highest certified power level in laboratory conditions, but the actual SAR level of the mobile phone while it is operating can be well below this value. This is because the mobile phone is designed to use the minimum power required to reach the network. Variations in SAR below the radio frequency exposure guidelines do not mean that there are variations in safety. While there may be differences in SAR levels among mobile phones, all **FLY** mobile phone models are designed to meet radio frequency exposure guidelines.

The SAR limit stated in the international guidelines is 2.0W/kg<sup>A</sup>

The highest SAR value for this model phone when used at the ear is below 1.2 W/kg.

SAR tests are conducted using standard operating positions with the phone transmitting at its highest certified power level in all tested frequency bands.

---

A. The SAR limit for mobile phones used by the public is 2.0 watts/kilogram (W/kg) averaged over ten grams of tissue. The limit incorporates a substantial margin of safety to give additional protection for the public and to account for any variations in measurements. The SAR values may vary, depending on national reporting requirements and the network band.

### **SIM AT Service**

SIM Card provides several value-added services.

These functions will only display and work on the menu of the phone when your SIM card is supported. The content and the terms of the function lists will depend on your network service provider.

Please contact your network service provider (a network operator or the service provider) in regards with availability of any services related to the SIM card, application information and the costs.

### **Other medical devices**

If you use any other personal medical devices, consult the manufacturer of your device to determine if it is adequately shielded from external RF energy. Your physician may be able to assist you in obtaining this information. Switch off your phone in health care facilities when regulations posted in these areas instruct you to do so.

*Health and safety information*

### **Vehicles**

RF signals may affect improperly installed or inadequately shielded electronic systems in motor vehicles. Check with the manufacturer or its representative regarding your vehicle. You should also consult the manufacturer of any equipment that has been added to your vehicle.

### **Posted facilities**

Switch off your phone in any facility where posted notices require you to do so.

### **Potentially explosive environments**

Switch off your phone when in any area with a potentially explosive

atmosphere, and obey all signs and instructions. Sparks in such areas could cause an explosion or fire resulting in bodily injury or even death. Users are advised to switch off the phone while at a refueling point (service station). Users are reminded of the need to observe restrictions on the use of radio equipment in fuel depots (fuel storage and distribution areas), chemical plants, or where blasting operations are in progress. Areas with a potentially explosive atmosphere are often but not always clearly marked. They include the areas below decks on boats, chemical transfer or storage facilities, vehicles using liquefied petroleum gas, such as propane or butane, areas where the air contains chemicals or particles, such as grain, dust or metal powders, and any other area where you would normally be advised to turn off your vehicle engine.

#### **Emergency calls**

This phone, like any wireless phone, operates using radio signals, wireless, and landline networks as well as user-programmed functions, which cannot guarantee connection in all conditions. Therefore, you should never rely solely on any wireless phone for essential communications like medical emergencies. To make or receive calls, the phone must be switched on and in a service area with adequate signal strength. Emergency calls may not be possible on all wireless phone networks or when certain network services and/or phone features are in use. Check with local service providers.

To make an emergency call:

1. Key in the emergency number for your present location. Emergency numbers may vary by location.
2. Press the Send Key.
3. Inform your location. Do not end the call until given permission to do so.

Certain features like Call Barring may need to be deactivated before you can make an emergency call. Consult this document and your local cellular service provider.

#### **Other important safety information**

- Only qualified personnel should service the phone or install the phone in a vehicle. Faulty installation or service may be dangerous and may invalidate any warranty applicable to the device.

- Check regularly that all wireless phone equipment in your vehicle is mounted and operating properly.
- Do not store or carry flammable liquids, gases, or explosive materials in the same compartment as the phone, its parts, or accessories.
- For vehicles equipped with an air bag, remember that an air bag inflates with great force. Do not place objects, including installed or portable wireless equipment, in the area over the air bag or in the air bag deployment area. Improperly installed wireless equipment could result in serious injury if the air bag inflates.
- Switch off your phone before boarding an aircraft. It is dangerous and illegal to use wireless phones in an aircraft because they can interfere with the operation of the aircraft.
- Failure to observe these instructions may lead to the suspension or denial of telephone services to the offender, or legal action, or both.

#### **Qualified service**

Only qualified service personnel may repair your phone. It is highly recommended to have a repair service by qualified service personnel. Use only the approved accessories and batteries

## ***Special features of your phone***

- **Camera and Camcorder**

Use 3.2M Camera-on your phone to take a photo or record a video.

- **Music player**

Play music files using your phone as a music player.

- **Bluetooth**

Transfer media files and personal data and connect to other devices using free, wireless Bluetooth technology.

- **Multimedia Message Service (MMS)**

Send and receive MMS messages with a combination of text, images, video, and audio.

- **Flight mode**

Switch your phone to use its none-wireless function in an airplane.

- **E-mail**

Send and receive e-mails with image, video, and audio attachments.

- **Java**

Enjoy Java™-based embedded game and download new games.

- **Alarm**

Use your phone as an alarm clock to wake you up in the morning or notify you of an impending event.

- **Get personal with caller ID**

See who's calling you when their own photo, Ring Tone plays.

### **Unpack**

Make sure you have each item

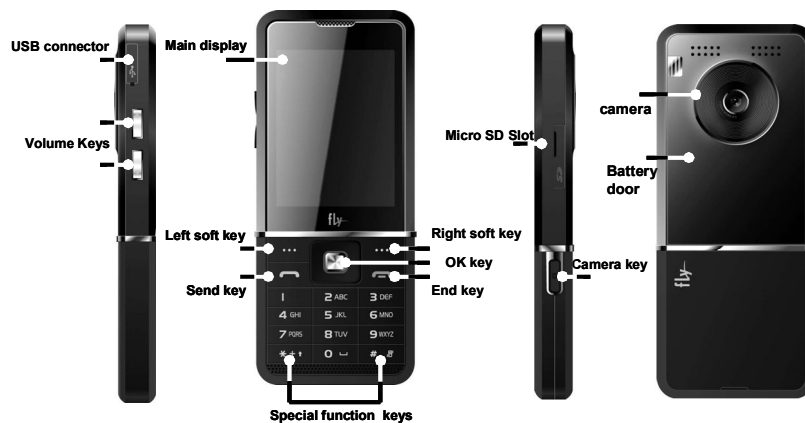
- Phone
- Charger
- USB Data Cable
- Battery
- User Guide
- Headset
- PC Sync Manager CD

You can obtain various accessories from your local **FLY** dealer.

**Note:** • The items supplied with your phone and the accessories available at your dealer may vary, depending on your country or service provider.  
• Use the purchased accessories with only **FLY**-authorized devices. The use of these accessories with other devices could cause problems and any repair costs would not be covered by the warranty.

## Your phone

Keys, features, and locations



**Note:** All the illustrations, simulated screen and related images used in this manual are for reference only. There may be slight difference between the handset and keys and content of display used in this manual and those of your handset. Please refer to your handset for actuality

## Get started

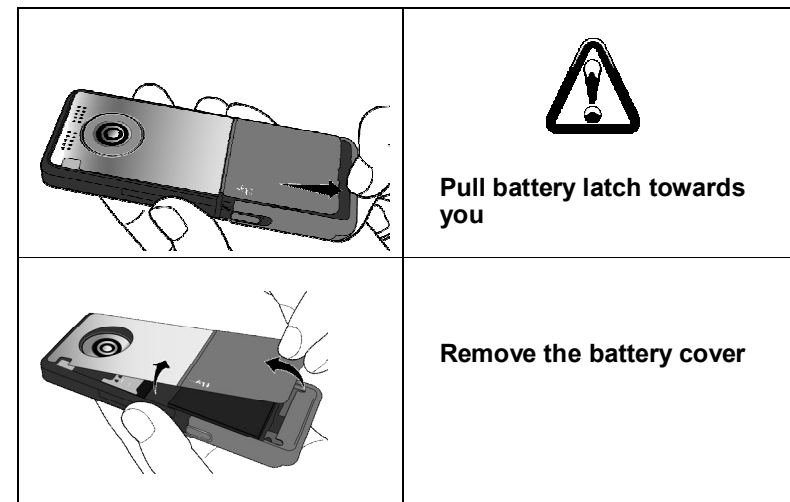
First steps to operating your phone

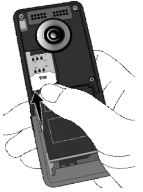
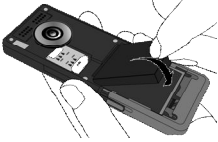



### SIM card information

When you subscribe to a cellular network, you receive a plug-in SIM (Subscriber Identity Module) card loaded with your subscription details, such as your PIN, and available optional services.

### Install and charge the phone

If the phone is already on, first turn it off by pressing and holding on/off key.



	<b>Insert the SIM card.</b> Make sure that the gold-colored contacts on the card are face down.
	<b>Install the battery.</b>
	<b>Replace the battery cover</b>
	<b>Push the battery latch to lock the battery door</b>
	<b>Plug the charger into a standard AC wall outlet.</b>

When the phone is completely charged (the battery icon becomes still), unplug the charger from the power outlet.  
Remove the charger from the phone. Switch the Phone On/Off  
Enter Your Pin (Access Codes). Dial the Phone Number required.

### Low battery indicator

When the battery is low a warning tone sounds, the battery low message displays and the empty battery icon blinks. If the battery level becomes too low, the phone automatically turns off. Recharge your battery.

**Note:** When the battery is discharged completely, and not used for a while, the phone will not display the charging icon for a moment while charging. The phone will display the charging icon after that transition period.

### Power On or Off

Press and hold Power On/Off button to turn it on and off  
Enter your SIM card PIN, if requested.

### Access Codes

There are access codes for your SIM card. These codes help you to protect the phone against unauthorized use.  
When requested for any of the code explained below, key-in the appropriate code (displayed as asterisks) and press the **OK** key.

#### ■ PIN

The **Personal Identification Number** or PIN (4-8digits) protects your SIM card against unauthorized use. The PIN comes with the SIM card; see the SIM card instruction provided with your card.  
If you enter an incorrect PIN three times in succession, the code will be disabled and cannot be used until you re-enable it by entering the PUK.

## ■ PUK

The 8-digit PUK (**P**ersonal **U**nblocking **K**ey) is required to change a disabled PIN. The PUK may be supplied with the SIM card. If not, or in case you have lost it, please contact your service provider.

To re-enable your PIN, proceed as follows.

1. Key-in the PUK and press the **OK** key.
2. Enter a new PIN of your choice and press the **OK** key.
3. When the **Confirm New PIN** message is displayed, key-in the same code again and press the **OK** key.

If you enter an incorrect PUK ten times in succession, the SIM card becomes invalid. Please contact your service provider for a new card.

## ■ Pin Password

The 4 ~ 8 digits of password is required when you use the Call barring function. You can obtain the password from your service provider when you subscribe to this function.

## Customize your phone

### ■ Display language

Select the language for your phone menus.

[Menu] → [10.Settings] → [10.1 Phone Setup] → [10.1.3. Language]

### ■ Time and Date

Set time and date for your phone

[Menu] → [10.Settings] → [10.1 Phone Setup] → [10.1.1. Time and Date]

### ■ Incoming call melody

[Menu] → [4.User profile] → [4.1 General] → [4.1.2. Customize] → [4.1.2.1 Tone set up] → [Incoming call]

### ■ Idle mode Wallpaper

Set wallpaper for the idle screen on the display.

[Menu] → [10.Settings] → [10.1 Phone Setup] → [10.2.1. Display Settings]

## ■ Phone lock

Protect the phone against unauthorized use with a phone password. The phone will require the password on power-up.

[Menu] → [10.Settings] → [10.4 Security Setup] → [10.4.2 Phone Lock]

## ■ Set Dedicated Key

Set up a menu for your own favorite menu items.

[Menu] → [10.Settings] → [10.1 Phone Setup] → [10.1.7Dedicated key]

## Keys and display

### Key Definition



#### Soft Keys

Perform functions identified on the bottom line of the display.



#### OK Key



#### Send Key

Dial or answer a call.

In the Idle Mode, Recall the recently dialed, missed, or received calls.



**End Key :** End a call.

In Menu mode, cancel input and return the phone to the Idle mode.

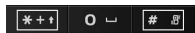
**Power on/off Key :** Press and hold to switch the phone on and off.



### Alphanumeric Keys

Enter numbers, letters and special characters.

In Idle mode, press and hold [1] to access your Voice Mail.



### Special Function Keys

Enter Special Characters

Perform various functions.



**Side Key** (On the left side of your phone)

In idle mode, Adjust the Ringtone volume.

Adjust the earpiece volume during a call by pressing briefly.

Adjust the Audio Player volume.



Camera key (on the right side of your phone). In idle mode long press camera key launches camera application

Start "voice recording" during a call by pressing and holding the camera key.. Stop "voice recording" by pressing the [Stop] soft key.

A. The special function key performs various functions

#### 1. Make the "International Call"

Press twice the [\*] key to display "+" character. Input the country code, area code (without the leading zero), and the phone number. Then press the Send Key. The "+" informs the network that it is an international call.

#### 2. Enter the "Pause or Wait"

You may enter a pause ("P") or a wait ("W") character into a dial string by pressing and holding the [\*] key.

#### 3. Activate or deactivate the "Silent mode"

To activate the "Silent Mode" option, press and hold [#] key in the idle mode.

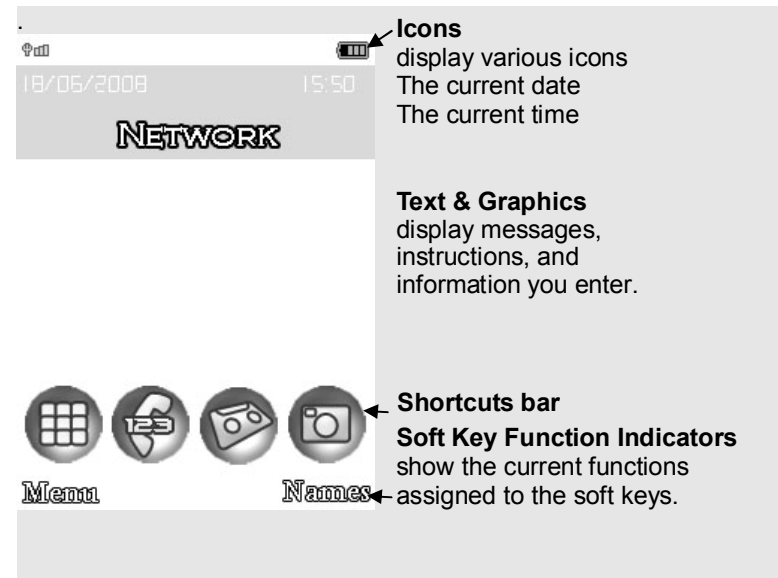
4. To lock/unlock the phone

Long press **left soft key/Menu key** to lock the phone.

To unlock the phone, long press on **left soft key/Menu key**.

## Display

### Layout



### Icons



**Signal Strength:** Shows the strength of the receiving signal. Greater the number of bars, stronger the signal strength.



**GPRS:** Shows the strength of the receiving GPRS signal. Greater the number of bars, stronger the signal strength.



**Roaming:** Appears when the phone is roaming.



**Missed Calls:** Appears when there is missed call(s).



**New Message:** Appears when a new incoming text message is received and is unread.



**MMS Unread:** Appears when a new MMS message is arrived and unread.



**WAP Mail:** Appears when WAP mail is received.



**Call Forward:** Appears when the call forward mode is active.



**Bluetooth:** Appears when the Bluetooth power is on. It has to be on, if you want to use the Bluetooth function. When you finish using, turn off the Bluetooth power.



**Bluetooth Connected:** Appears when the Bluetooth device is connected.



**Vibrate and Ring:** Appears when the Vibrate and Ring mode is active.



**Vibrate then Ring:** Appears when the Vibrate then Ring mode is active.



**Vibrator ON :** Appears when the Vibration mode is active.



**Alarm On:** Appears when you set the alarm.



**Battery Strength:** Shows the level of your battery. The more bars you see, the more power you have left.



**Headset:** appears when you set the Profiles as Headset.

\* Depending on your country or service provider, the icons shown on the display may vary.

## Access menu functions

### Use the soft keys

The roles of the soft keys vary depending on the function you are using. The bottom line of the display indicates their current role.

### By pressing the soft keys and Navigation key:

1. Press a desired soft key.
2. Press the Navigation key to move to the next or previous option.
3. Choose [Select] soft key or press the [OK] key to confirm the function displayed or option highlighted.
4. To exit, choose either of the following methods.
  - Select [Back] to move up one level.
  - Press and hold [End] to return to Idle mode.

## Shortcut functions

Shortcut bar can be visible or hidden. Press on up navigation key to display the shortcuts bar and press on down navigation key to remove it. Shortcut bar is automatically hidden if there is no action .

To launch a shortcut, scroll horizontally with left or right navigation key and short press OK key.

To customize you shortcut bar, long press OK key on the shortcut you want to change. Select the new desired function.

## Enter text

### ■ Writing languages

Before entering text, make sure you have selected the correct writing language.

To define your preferred input method, go to **Phone Setup** sub menu in **Settings** menu. Then select **Preferred Input Method**. Once you set the preferred input method, next time you edit in text input mode, the setting will be applied until you change to another.

### ABC, T9, Number, and Symbol modes

You can enter text in some features such as Messages, Phonebook, or Calendar, using ABC mode, T9 mode, Number mode, and Symbol mode.

You can enter text by pressing the alphanumeric keys on the phone.

Press the appropriate key until the character or the word you want

appears on the screen.

### Text Input Options:

While you are in text editing mode, you will be in several modes.

When you see [Option], press the soft key (left) for option: you can save the entry or change the Text Input Method. To erase a character, press the right soft key [Clear] next to the character you want to erase.

### T9 Text Editing Mode

T9 Text Editing Mode is a predictive text input mode that allows you to key in any character using single keystrokes.

While you are in T9 editing mode, press the alphanumeric key once for one character. You will see T9 suggested words.

For example, press 4,3,5,5 and 6 key to enter "hello" in English word mode. T9 predicts the word that you are typing, and it may change with each key that you press. And press the [Select] soft key (left) to select the word you want to write.

### You can change input methods from time to time.

If you want to change the text input method temporarily, in the text input mode, press [Option] soft key, and select "Input Method" from the option.

- You can change the text input method with the [#] key; the input methods will swap when you press the [#].
- Press and hold the [\*] key to select Symbols.
- Press [0] to insert a space.

## Overview of menu functions

To access Menu mode, press [Menu] in Idle mode.

### 1. Phonebook ▶ p.

- 1.1 Quick Search ▷ p.
- 1.2 Search Entry ▷ p.
- 1.3 Add New Entry ▷ p.
- 1.4 Copy All ▷ p.
- 1.5 Delete ▷ p.
- 1.6 Caller Group ▷ p.
- 1.7 Speed Dial ▷ p.
- 1.8 Quick call ▷ p.
- 1.9 Extra Number ▷ p.
- 1.10 Settings ▷ p.

### 2. Messaging ▶ p.

- 2.1 Messages ▷ p.
- 2.2 E-Mail ▷ p.
- 2.3 Voice Mail ▷ p.
- 2.4 Broadcast Message ▷ p.

### 3. Call History ▶ p.

- 3.1 Missed Calls ▷ p.
- 3.2 Dialed Calls ▷ p.
- 3.3 Received Calls ▷ p.
- 3.4 Delete Call Log ▷ p.
- 3.5 Call Time ▷ p.
- 3.6 SMS Counter ▷ p.
- 3.7 GPRS Counter ▷ p.

### 4. User Profiles ▶ p.

- 4.1 General ▷ p.
- 4.2 Meeting ▷ p.
- 4.3 Outdoor ▷ p.
- 4.4 Indoor ▷ p.
- 4.5 Headset ▷ p.
- 4.6 Bluetooth ▷ p.

- Some menus are operator-, network- and subscription-dependent

- 4.7 Flight Mode ▷ p

### 5. Camera ▶ p.

- 5.1 Camera ▷ p.
- 5.2 Image Viewer ▷ p.
- 5.3 Video Recorder ▷ p.
- 5.4 Video Player ▷ p.
- 5.5 Photo Editor ▷ p.
- 5.6 Slide show ▷ p.

### 6. Music ▶ p.

- 6.1 Audio Player ▷ p.
- 6.2 Equalizer ▷ p.
- 6.3 Sound Recorder ▷ p.
- 6.4 FM Radio ▷ p.
- 6.5 Schedule FM record ▷ p.
- 6.6 Melody Composer ▷ p.
- 6.7 Download music ▷ p.

### 7. Business ▶ p.

- 7.1 Calendar ▷ p.
- 7.2 To Do List ▷ p.
- 7.3 Alarm ▷ p.
- 7.4 World Clock ▷ p.
- 7.5 Calculator ▷ p.
- 7.6 Units Converter ▷ p.
- 7.7 Currency Converter ▷ p.
- 7.8 Stopwatch ▷ p.
- 7.9 Countdown ▷ p.

### 8. Services ▶ p.

- 8.1 Opera Mini ▷ p.
- 8.2 Services + ▷ p.

- 8.3 WAP ▷ p.
- 8.4 Data Account ▷ p.
- 8.5 SIM Tool Kit ▷ p.  
(depends on SIM)

### 9. Fun & Games ▶ p.

- 9.1 E-Book Reader ▷ p.
- 9.2 Java ▷ p.
- 9.3 Java settings ▷ p.
- 9.4 Java default security ▷ p.
- 9.5 Games ▷ p.
- 9.6 Download Games ▷ p.
- 9.7 Download Sounds ▷ p.
- 9.8 Download Video ▷ p.
- 9.9 Download Pictures ▷ p.

### 10. Settings ▶ p.

- 10.1 Phone Setup ▷ p.
- 10.2 Display Characteristics ▷ p.
- 10.3 Call Setup ▷ p.
- 10.4 Security Setup ▷ p.
- 10.5 Restore Factory Settings ▷ p.

### 11. Connectivity ▶ p.

- 11.1 Bluetooth ▷ p.
- 11.2 Network Setup ▷ p.
- 11.3 USB ▷ p.

### 12. File Manager ▶ p

- 12.1 Phone Storage ▷ p.
- 12.2 memory Card ▷ p.

## 1. Phonebook (Menu 1)

You can store phone numbers on your SIM card and in your phone's memory. The SIM card and phone's memory are physically separate, but they are used as a single entity called Phonebook. To access this menu, press [**Menu**] in Idle mode and select **Phonebook**.

### 1.1 QUICK SEARCH

Use this menu to search for numbers in Phonebook.

Finding an entry

1. Enter the first few letters of the name that you want to find.
2. Select the name you want from the list.
3. Scroll to a number and press [Send] to dial, or press [Option] to edit the contact information.
  - 1) Send SMS: allows you to send SMS to selected name, number of your phonebook.
  - 2) Send MMS: allows you to send MMS to selected name, number of your phonebook
  - 3) View: allows you to view the entry's contents such as name, number and so on.
  - 4) Edit: allows you to edit the entry items.
  - 5) Delete: allows you to delete the entry.
  - 6) Copy: allows you to copy the entry from SIM to Phone or Phone to SIM. You will have the same entry in a different storage. (SIM + Phone)
  - 7) Move: allows you to move the entry from SIM to Phone or Phone to SIM. The entry will be stored in the original storage. (SIM to Phone, Phone to SIM)
  - 8) Duplicate: allows you to duplicate the entry in the same storage. You will have the same data in the same storage. (SIM+SIM, Phone+Phone)
  - 9) Send vCard: allows you to send the phonebook entry by SMS/MMS/Bluetooth or save as file.

### 1.2 SEARCH ENTRY

When you select the Search Entry, after storing numbers to the

phonebook, you can search them by Name.

1. Enter a name you want to search in the text input box. Input full name or even a start letter and press the [Option] soft key (left).
2. If there is a name, you want to call, choose the name by using the Navigation key.
3. Press the Send Key to make a call. However, if there is more than one entry in the selected name, it will display a list. Then you may simply select one entry and press the Send Key to make a call.

### 1.3 ADD NEW ENTRY

Use this menu to add a new contact to Phonebook.

#### Storing a number on the SIM card

1. Enter information about the contact:
  - Name: add a name.
  - Phone number: add a number.
2. Press [Save] to save the contact.

#### Storing a number in the phone's memory

1. Enter information about the contact:
  - Name: add a name
  - Phone number: add a number.
  - Mobile/Home/Office/Fax/: add a number in any category. You can change the number type, or set the number as the default for the contact by pressing [Option] and selecting Change type or Mark as default number.
  - Company Name: add a company name.
  - E-mail: add an e-mail address.
  - Birthday: add a birthday.
  - Associate Picture assign a caller ID image to alert you to a call from the person.
  - Associate Sound: assign a sound to alert you to a call from the person. The settings specified in Associate Picture, and Sound are given priority over group settings.
  - Caller Group: assign the number to a caller group.
2. Press [Save]

### 1.4 COPY ALL

You can copy all phonebook data from SIM card to Phone or from Phone to SIM. It is a useful function if you want to back up your phonebook data from a SIM card to your phone and vice versa.

### 1.5 DELETE

You can delete all phonebook data in SIM card or Phone. In addition, you can delete the phonebook data one by one.

### 1.6 CALLER GROUP

Use this menu to organize your contacts in caller groups.

Adding members to a caller group

1. Select a caller group.

2. You can modify caller group details:

- Group Name: edit the group name to change it  
Press [Edit]-[Option]-[Input Method] to select input method, you can then change group name, press [Option] and select "Done" to save.
- Melody: Allows you to select the ring tone to be used when you receive a call from a person in the group. Select your ringtone by pressing Navigation key.
- Picture: Allows you to select incoming call picture when you receive a call from a person in the group. Press Navigation key to change the picture and go to the next line to select. If you want to view and select images, select the [View] soft key (left) and scroll the Navigation key. To select the picture, press the [OK] soft key (left).
- Member List  
You can add or delete group member(s)  
Press [OK] and select [Add]  
It will display a phonebook list excluding the members already in the group. It is possible to set a member in multiple groups.  
Press [Save]

### 1.7 SPEED DIAL

Use this menu to assign speed dial numbers (2 to 9) for 8 of your most frequently called numbers.

#### Assigning speed dial entries

1. Enable speed dial "On" and go into "Set Number"
2. Select a key location from **2** to **9**. Key **1** is reserved for your voice-mail server.

3. Press [Option] soft key, and select 'Edit' and select the entry from the phonebook list by pressing the [Add] soft key.

#### Managing speed dial entries

- **Edit:** assign a different number to a key.
- **Delete:** clear the speed dial setting for a key.

#### Dialing speed dial numbers

In Idle mode, press and hold the appropriate key.

### 1.8 QUICK CALL

Use this function to quickly access your preferred contacts associated to a picture. You can only add contacts from your phonebook in the phone.

Adding a member to quick call :

Go to quick call menu. Press [OK] [set] Select the phone number you want to add to quick call [OK] Select a picture from file manager.

### 1.9 EXTRA NUMBER

You can view and edit your mobile phone number (owner number), Service Dial number and SOS number.

- Owner Number: Use this feature to check your phone numbers, or to assign a name to each of the numbers.
- Service Dial Number: lists up the SIM SDN (Service Dial Number) and allows you to access to the number by pressing the [Dial] soft key (left) or the Send key.
- SOS Number: lists up the SOS Number.

### 1.10 SETTINGS

You can view and edit the settings for the Phonebook as following.

#### Memory Status

You can check how many names and numbers are stored in the phone book (SIM card and phone memories) or how much free space is remained.

#### Preferred Storage

You can set your preferred storage either to SIM or to Phone as default storage in the phonebook.

#### Fields

There are fields that you can set on or off in your phonebook entry. (Home Number, Company Name, E-mail Address, Office Number, Fax Number, Birthday, Associate Picture, Associate Sound and Caller Group). Press the [On] or [Off] left soft key (left) to turn on or off the field.

### My vCard

You can edit, save and send My vCard. You can utilize My vCard as your mobile business card.

- Edit My vCard  
In the My vCard you can edit Name, Number, Home Number, Company Name, E-mail Address, Office Number, and Fax Number.
- Send My vCard  
You can send My vCard by SMS, MMS, Bluetooth and File.

## 2. Messaging (Menu 2)

Use the Messaging menu to send and receive short messages and multimedia messages, and e-mails. You can also use a voice-mail, and cell broadcast message features. To access this menu, press **[Menu]** in Idle mode and select **Messaging**. Message functions are available depending on network services that your service provider supports.

### 2.1 MESSAGES

The SMS (Short Message Service) function is a network service and your network may or may not support the service.

**Note:** • The Message service may not be available on all networks. Some network allows it only within its own network.  
• The maximum number of characters allowed in a short message varies by service provider. If your message exceeds the maximum number of characters, the phone will split the message.

Multimedia Message Service (MMS) delivers messages containing a combination of text, image, video, and audio, from phone to phone or from phone to e-mail.

**Note:** • The maximum size allowed for a message can differ, depending on your service provider.

• Depending on the file type or DRM (Digital Rights Management) system, some files may not be able to be forwarded.

### Write Message

#### Text Message

Use this menu to create and send a message as following

1. Select [Text Message] menu in the [Write Message] menu.
2. Make a message.
3. After you complete the message, press the [Option] soft key (left) and then select "Done." Choose one of following options.
  - 1) Send Only: Sends the message to the recipient phone number. It will not save the message.
  - 2) Save and Send: Saves the message, and send it to the required recipient.
  - 3) Save to Drafts: Saves the message so that you can send it later.
  - 4) Send to Many: Send the message to multiple recipients. Select Edit List to add up to 10 recipient(s).
  - 5) Send by Group: Sends the message to the Caller Group. Select a Caller Group from the list.
4. You can input the number directly or get from the phonebook by pressing the **[Search]** soft key (left).
5. The phone will display the Message sending Success or Fail message on the screen for all recipients.

**Note:** If you receive a call while you are writing a message, the message will be backed-up and after the call finishes, the phone will display [write message] mode. You can finish the message without losing the data

### Multimedia Message

Use this menu to create and send a message as following

1. Select [Multimedia Message] menu in the [Write Message] menu.
2. Compose a message. You can edit To, CC, BCC, Subject, and Content. You can input the number directly or get from the phonebook by pressing the [Search] soft key.

3. After you complete the message, press the [Done] soft key (right). Choose one of following options.
- 1) Send Only: Sends the message. It will not save the message.
  - 2) Save and Send: Saves the message, and send it to required recipient(s).
  - 3) Save to Drafts: Saves the message to Drafts. You may send it later.
  - 4) Send Options: Validity Period, Delivery Report, Read Report, Priority
  - 5) Exit: Exits the Write Message, the phone will ask if you want to save the message.

The phone will display the Message sending Success or Fail message on the screen for all recipients.

#### **Inbox**

This folder stores all of the messages you have received, except for e-mails. You can view the new text messages or the read messages. It will display the sender's phone number or name (if stored in the **Phonebook**) on the list. If you choose the **[Ok]** soft key, you can view the message contents.

#### **Outbox**

You can view the messages that the phone has failed to send. Send, Edit, Delete, Delete All and Use Number options are available.

#### **Sent**

You can view the sent messages you have saved. Forward, Edit, Delete, Delete All and Use Number, URL, E-mail Address options are available.

#### **Drafts**

This folder stores messages you have saved to send at a later time. When you select an SMS or e-mail message, it opens in Edit mode so that you can edit and/or send the message.

#### **SIM Message**

You can view messages originally stored on your SIM.

#### **Delete Folder**

This folder helps you to delete all mails in selected folder as Inbox, Outbox, Sent, Draft and Delete All Folders.

#### **Template**

Use this menu to make and use templates of frequently used

messages. You can create the templates with the sentences you use frequently so that you can retrieve and insert them when composing a message.

#### **Message Settings**

Within the Message Settings sub-menu, you can define default values on common parameters for mobile-originated messages. By setting default values for the messages, you can experience a more comfortable service.

You can set up the related parameters for sending and retrieving the messages.

### **2.2 E-MAIL**

The E-Mail application allows you to send and receive e-mails. The application supports text and attachments. The e-mail application could be either normal POP3 e-mail client or IMAP4 based e-mail service. When highlighting on Inbox, Sent, Outbox and Draft, the number of mails shall be displayed as a popup hint, e.g., "10 mails".

**Note:** If current incoming protocol is set to IMAP4, and the phone is not currently connected to the network, when before entering this screen, shall popup a confirmation screen for the user with message "Do you want to connect to the network?". If the user selects "Yes", then can send list folder request to network; otherwise, directly enter this screen, and all popup hint displays "0 mails."

#### **Send and Receive**

In order to exchange the email, the user has to provide appropriate settings (described in section **Email Profile**).

#### **Write Email**

This menu allows you to write an email.

- To – contain the recipient's list of the e-mail.
- CC – contain the carbon copy list of the e-mail.
- Subject – contain the subject of the mail.
- Attachment – display attachment states of the email. At most 3 attachments can be added in a mail.

- Priority – the priority of the mail. You can use inline selection to change the priority. There are “Low”, “Normal” and “High.” options.
- Encoding Type – the encoding type of email body, including ASCII, BIG5, GB, UTF8
- Content – contain the content of the mail. The whole content shall be display in a multi-line box. At most 7 lines can be displayed in this field.

#### **Inbox**

This folder stores the list of emails you have received.

#### **Outbox**

This folder displays the list of unsent e-mails.

#### **Sent**

This folder displays the list of sent mails.

According to flash/ram size, the maximal number of mails to be displayed shall be dynamic.

#### **Drafts**

This folder displays the list of e-mail Draft you saved.

#### **Delete All Folder**

This folder helps you to delete all mails in selected folder.

#### **Email Profile**

This folder helps you to configure various servers and Profile related settings. All the configurable items are grouped into entities called **Profiles**.

### **2.3 VOICE MAIL**

Your phone is capable of dialing with voice-mail server number (if provided by your network). If you receive any voice-mail, your phone displays **New Message** in the idle screen.

Select the Voice Mail from the list and press [Option] soft key (left). You can **Edit** the Voice Mail server number.

By selecting the **Connect to Voice**, your phone will dial to the configured number that has been stored in Voice Mail list. You can then listen to the voice-mail.

**Note:** Voice mail is a network feature. Please contact your service provider for more information.

### **2.4 Broadcast Message**

This network service allows you to receive the broadcast messages on various topics such as weather, traffic, local district code, local hospitals, taxis or pharmacy in your area.

For more information about broadcast message topics, please contact your service provider.

The phone will display the Broadcast Messages immediately when received, on the following condition:

- 1) When the phone is in the idle mode
- 2) When the **Receive Mode** (2.4.1) option is set to **On**
- 3) When the message channel is currently active in the channel list.

**Note:** This service may not be available on all networks. For more information about the available subjects, please contact your network service provider.

The following options are available:

- 1) Receive Mode: You can turn the receive mode on and off by pressing the soft key (left). Allows you to enable or disable the reception of the broadcasted text messages.
- 2) Read Message: With this menu, you can read all the broadcasted text messages received. The title area of the screen will display the name of the message subject item. Whenever the phone receives new contents, the phone will update the contents of the message subject.
- 3) Languages: Allows you to select your preferred language for displaying cell broadcast messages. The number of languages you can select depends on your SIM card.
- 4) Channel Settings: Allows you to indicate the channels from which you wish to receive broadcast messages.

This menu allows you to read, add and delete the list by using **Select**, **Add**, **Edit** and **Delete** option. The number of items in the list depends on your SIM card. It will display all items you selected.

**Note:** For more information about the available subjects, please contact your network service provider.

### 3. Call History (Menu 3)

Use this menu to view the calls you have dialed, received, or missed, and the length of the calls. You can also check the cost of your calls, if the SIM card supports this function.

To access this menu, press [**Menu**] in Idle mode and select **Call History**.

#### 3.1 Missed Calls

This menu displays the most recent received calls that you did not answer. In the missed calls list, you can view the details of the record by pressing the [**Ok**] soft key (left). In the view screen, you can make a call to the number by pressing the Send Key. The following options are available:

- 1) Delete: Allows you to delete the record
- 2) Save to Phone Book: Allows you to save the record to the phonebook
- 3) Dial: Allows you to call back to the recorded number
- 4) Edit: Allows you to edit the number and save to the phonebook
- 5) Send SMS: Allows you to send SMS to the recorded number
- 6) Send MMS: Allows you to send MMS to the recorded number

#### 3.2 Dialed Calls

This menu displays the most recent calls you have dialed.

In the dialed calls list, you can view the details of the record by pressing the [**Ok**] soft key (left). In the view screen, you can make a call to the number by pressing the Send Key.

#### 3.3 Received Calls

This menu displays the most recent calls you have received.

In the list of received calls, you can view the details of the record by pressing the [**Ok**] soft key (left). In the view screen, you can make a call to the number by pressing the Send Key.

#### 3.4 Delete Call Log

This menu lets you delete all call data of each category at once.

The following categories are available:

- Missed Calls: Allows you to delete all missed call data
- Dialed Calls: Allows you to delete all dialed call data

- Received Calls: Allows you to delete all received call data
- Delete All: Allows you to delete all call logs.

#### 3.5 Call Time

This menu displays the time log for calls made and received. The actual time invoiced by your service provider will vary.

- Last call time: check the length of your last call.
- Total sent: check the total length of all the calls you have dialed since the last reset.
- Total received: check the total length of all the calls you have received since the last reset.
- Total Time: total length of all calls made and received since the last reset.
- Reset All Time: Allows you to reset the call timers You need to enter the phone password.

**Note:** The actual time invoiced for calls by your service provider may vary, depending on network features, rounding-off for billing purposes and so forth.

#### 3.6 SMS Counter

You can view the numbers of sent and received SMS.

#### 3.7 GPRS Counter

You can view how many GPRS message has been sent and received, and reset the counter.

### 4. User Profiles (Menu 4)

This menu allows you to set the ring tone, alert type, ring volume, answer mode etc ... when you receive an incoming call or a new message so that you can adapt the use of your phone to different types of call environments.

Select

1. General
2. Meeting

3. Outdoor
4. Indoor
5. Headset
6. Bluetooth
7. Flight mode

and press [Option] soft key (left) to access the following options:

Activate	Activate the selected profile.
Customize	Allows you to set the selected mode including Tone Setup (Incoming Call, Power On, Message Tone and Keypad Tone), Volume (Ring Tone and Key Tone), Alert Type (Ring, Vibration Only, Vibra and Ring or Vibra Then Ring), Ring Type (Single, Repeat or Ascending), Extra Tone (Warning, Error, Camp on and Connect), Answer Mode (Any Key).

*The "Auto" option in Answer Mode is available only when the phone is in Headset Mode. Headset mode need not be activated. The phone will switch to headset mode automatically when you plug the headset into your phone.*

### Flight Mode

This menu allows you to set your menu to Normal Mode or Flight Mode. You can also select Query When Power On so that you will be asked which mode you prefer when the phone is powered on. If Flight Mode is activated, network function will be closed and all related network operations will be prohibited.

## 5. Camera (Menu 5)

The Camera menu provides you with several multimedia functions.

### 5.1 Camera

You can use the camera module embedded in your phone to take photos. Before taking a picture, you can set your camera settings on screen by using navigation keys , and [Option] soft key (left).

Note:

- Do not take photos of people without their permission.
- Do not take photos in a place where cameras are not allowed.
- Do not take photos in a place where you may interfere with another person's privacy.

When you take a photo in direct sunlight or in bright conditions, shadows may appear on the photo.

#### Taking and Saving a Photo

1. Choose **[Camera]** menu.  
To access this menu, press **[Menu]** in Idle mode and select **[Camera]** menu.
2. Set your camera by using [Option]. Turn your handset in Landscape position for better usage. 240x320 resolution is used for wall paper portrait position.
3. The [camera] key on the side of the phone allows you to take a picture. Pressing half way automatically sets the focus, press fully to capture the image.
4. To save the picture, press [Save] soft key.
5. If you want to send the picture by MMS promptly, select the [OK] key. You can attach the picture automatically. This function is not available if continuous shot is activated.
6. If you want to take more pictures, select the [Cancel] soft key (right). The screen will display the camera preview and picture is not saved.
7. If you want to view the image, you can access the Image Viewer menu.

#### Key Usages in Camera Preview

##### ※ Navigation key

- Brightness Setting ( by pressing Navigation Key): allows you to adjust the brightness (Exposure Value).
- Zoom Setting (by pressing Navigation Key): By pressing the navigation keys, you can zoom in and out the preview.

- Camera Shutter ([OK] Key): you can take a picture by pressing the [OK] key.

#### ※ Function Keys

There are more functions. You can use these functions by pressing the keys.

- Option (Left Soft key) – press the [Option] soft key (left) to view and select options for the Camera settings and viewer. See details the following descriptions for Option.
- Cancel or Back (Right Soft key)– if you want to cancel your key-input or go back to upper menu, press the [Back] soft key (right).

#### ※ Alphanumeric Keys

You can easily change the camera setting by pressing the following alphanumeric keys. The screen will display and toggle camera option icons, when you press the following keys.

**Note:** Camera options

Key	Setting	Key	Setting
1	Effect Settings	7	Image Quality
2	White Balance	8	Image Size
3	Flash	#	Show or Hide Option icon
4	Delay Timer		
5	Continuous Shot		
6	Scene mode		

#### Album :

Enables to access image viewer.

#### Camera Settings

- Shutter Sound : You can select a shutter sound or turn off the shutter sound. The sound makes you feel the sense of taking a picture.

- EV (-4/-3/-2/-1/0/+1/+2/+3/+4): You can set the EV (Exposure Value) and the preview will look darker in lower EV and brighter in higher EV.
- A/E Meter : Auto/Spot/Weight/average.
- Banding (50Hz/60Hz): You can select the sampling bandwidth of the camera sensor. When bandwidth increases, the memory size and the picture quality will increase.
- Delay Timer (Off/5Sec/10Sec/15Sec): It allows you to take a picture with delayed timer. If you set the delay timer at 5 sec, and press the [OK] key, it will take a picture 5 seconds later.
- Cont Shot (Off/ 1shot/ bust shot): It allows you to take multiple continuous shots by pressing the camera key.

#### Image settings :

- Image Size (240x320/320x240/ 640x480/ 1280x1024/ 2048x1536)
- Image quality (Low/Normal/High)

#### White Balance :

Auto / Daylight / Tungsten / Fluorescent / Cloud / Incandescence

#### Scene Mode :

Auto/ Close-Up/ Night

#### Effect Settings :

Normal, Grayscale, Sepia, Sepia Green, Sepia Blue, Color Invert, Gray Invert, Blackboard, Whiteboard, Copper Carving, Blue Carving, Embossment, Contrast, Sketch.

#### Add Frame:

You may select various types of frames to create stylish frame to your photo. It only supports the 'Add Frame' when the resolution is 320x240. You can adjust "Add Frame" menu by Volume Up/Down key.

#### Storage (Phone/ Memory Card):

Allows you to select the storage for saving images.

#### Restore Default:

This menu allows you to restore to the camera's default settings.

## 5.2 Image Viewer

You can see your photos in your phone by choosing [Image Viewer] menu in [Multimedia] menu. It will display the photos with thumbnail, image name, and image size.

Option:

- 1)View: allows you to view the image in full screen. Use the Navigation key to view other images
- 2)Image Info: allows you to provide the image information
- 3)Browse style: allows you to view images either List view or Matrix view
- 4)Forward: allows you to forward the image to Wallpaper, Screen Saver, Power On Display, Power Off Display, Phone Book, MMS, E-Mail, and Bluetooth
- 5)Rename: allows you to edit the image name.
- 6)Delete: allows you to delete the selected image.
- 7)Delete All Files: allows you to delete all images in the storage.
- 8)Sort: allows you to sort the image by Name, Type, Time and Size.
- 9)Storage (Phone / Memory Card): allows you to select the storage for saving images.

## 5.3 Video Recorder

With this phone, you may record a video with the Video Recorder menu.

### Recording and Saving a Video

1. Choose [Video Recorder] menu.
2. Set your video recorder by using [Option] or alphanumeric keys.
3. After setting the view, start to record a video by pressing the [OK] key or camera key
4. The video will be saved automatically by pressing the [Stop] soft key (right).
5. If you want to view the recorded file, you can access it via the Video Player menu.

### Alphanumeric Keys

You can easily change the video setting by pressing the following alphanumeric keys. The screen will display and toggle camera option icons, when you press the following keys.

**Camcorder Settings: press [Option] soft key (left) to enter options**

## sub-menu

- White Balance (Auto / Daylight / Tungsten / Fluorescent / Cloud / Incandescence)
- EV (-4/-3/-2/-1/0/+1/+2/+3/+4): You can set the EV (Exposure Value) and the preview will look darker in lower EV and brighter in higher EV.
- Night Mode : (On/Off)
- Banding (50Hz/60Hz): You can select the sampling bandwidth of the camera sensor. When bandwidth increases, the memory size and the picture quality will increase.

### Video setting :

- Video Size (QCIF (176x144) / CIF (352x288))
- Video Quality (Low/Normal /High/Fine): The recorded file's memory size will increase if you choose higher quality.
- File Size Limit (No Limit/ 95k/ 195k/ 295k)
- Record Time Limit (No Limit/ 15sec/ 30sec/ 60sec)
- Record Audio (On/ Off)
- Encode Format (H.263/ Mpeg4)

### Effect settings

Normal, Grayscale, Sepia, Sepia Green, Sepia Blue, Color Invert, Gray Invert, Blackboard, Whiteboard, Copper Carving, Blue Carving, Embossment, Contrast, Sketch

### Storage

Phone/ Memory Card: allows you to select the storage for saving files.

### Restore Default:

This menu allows you to restore to the video recorder's default settings.

## 5.4 Video Player

You can see your video in your phone with the Video Player menu. By pressing the \* key, you can view the recorded file with the wide screen.

Option:

- 1) Play: allows you to play the recorded video
- 2) Forward: allows you to forward the video image to MMS, E-Mail, and

Bluetooth.

- 3) Rename: allows you to rename the video file
- 4) Delete: allows you to delete the video file
- 5) Delete All Files: allows you to delete entire recorded video files.
- 6) Sort: allows you to sort video files by name, type, time and size
- 7) Streaming URL : (predefined/history/input URL)
- 8) Network settings (data account/proxy/UDP port)
- 9) Storage (Phone / Memory Card): allows you to select the storage for saving video files.

## 5.5 Photo Editor

### Photo Manager

You can edit photo image with this function..

1. Select the image file you want to edit in the File Manager storage.
2. Choose 'Auto Resize', 'Main LCD Clip'.
- (1) Auto Resize function resizes the selected image to full image
- (2) Main LCD Clip function clips a part of image to fit in 320x240 pixels..
3. Option
  - 1) Save As: after editing the selected image, save the image to other file name. Phone automatically issues a file name. You can also edit the file name.
  - 2) Add Effect: you can add effect such as Sepia, Grayscale, and so on. Press the left or right navigation keys to change selection.
  - 3) Add Frame: press left or right navigation keys to change selection of picture frames.
  - 4) Add Icon: Use the Sensitive Navigation keys to select the icon. Press icon and drag to move it on the picture. Press the [Done] soft key (left) to stamp the icon on the image.
  - 5) Add Text: Edit the text and you can change text color, border color, shadow color, font size (depending on language), and italic the font. Press the up, down, left or right navigation key to move the text, or press text and drag to move it on the picture. Press the [Done] soft key (left) to stamp the text.
  - 6) Adjustment: you can adjust image brightness and color
  - 7) Flip: you can flip the image in horizontal left/right, vertical up/down.
  - 8) Expand Canvas: when the image is smaller than 240x320 pixels,

you can expand canvas size to full screen.

## 5.6 Slide Show

Enables you to view all your pictures in slide show mode.

To activate this option, press [Options] [Open] and selected the folder you want to view in slide show mode.

## 6. Music (Menu 6)

### 6.1 Audio Player

You can listen to MP3, MIDI, WAV, AMR, iMelody music files with the Audio Player by selecting Music sensitive key and then music player.

#### To view the music list,

Press [List] soft key. It will display available music list from the micro SD Card or Phone depending on Play List setting.

#### To play the music,

From the music player screen, select ► or press [List] soft key and select the song you want then select "Play."

Option:

- 1) Play: allows you to play the music files
- 2) Detail: displays details of the music file, such as a Music Title, Artist, Album, Play Time, File Size and so forth.
- 3) Add to Rings: allows you to set the music file in the microSD card or phone memory as a ring tone. You should insert the microSD card to enable this function and to use the ring tones from the microSD card.
- 4) Add: allows you to add a directory to the play list. This option is available when you set the List Auto Generate to Off.
- 5) Remove: allows you to remove the selected file from the play list. This option is available when you set the List Auto Generate to Off.
- 6) Remove All: allows you to remove all files from the play list. This option is available when you set the List Auto Generate to Off.
- 7) Refresh List: allows you to refresh the music list.
- 8) Settings
  - (1) Player Setting:
    - Play List (From Memory Card/From Phone)

- List Auto Generation (On/Off): you can select whether to generate the music list automatically or manually. When this option is **On**, music files in the main directory will be selected in the play list; when the option is **Off**, you can add a file or a directory to the play list.

- Repeat (One/All/Off):

- Shuffle (On/Off):

- Background Play (On/Off): allows you to set the Audio Player to play the music while you are using the phone other than audio player, such as menu navigation. When Background Play option is On, it will play the music, even if you press the End key or [Back] soft key (right).

When the Background Play option is Off, and you press the End key or [Back] soft key (right), it will stop playing the music file.

(2) Sound Effects:

- Equalizer: allows you to set equalizer as Normal, Bass, Dance, Classical, Treble, Party, Pop, Rock.

- Play Speed (Normal, Fast, Fastest, Slowest, Slow)

- Reverb Effect (None, Concert, Shower, Church, Small Room, Opera, Bath Room)

- 3D Surround

(3) Bluetooth settings :

- Bluetooth stereo output (On/Off)

- Bluetooth stereo headset

**To make a play list from the selected directory:**

1. Access to the Audio Player.

2. Press the [List] soft key (left).

3. Press the [Option] soft key (left) and select **Settings**, then player settings and set the **List Auto Generate** to **Off**.

4. Select **4. Add** from the [Option] menu, the phone will display the File Manager. Using the navigation keys, highlight the desired directory or file in the File Manager

5. Press the [Option] soft key (left), and select **1.Select**. The music files in the selected directory will be added to the play list.

## 6.2 Equalizer

Allows you to set equalizer as Normal, Bass, Dance, Classical, Treble, Party, Pop and Rock:

## 6.3 Sound Recorder

With this menu, you can record sound in AMR, WAV and AWB format and use it as voice memo, ring tone, MMS attachment.

1) Options when there is no record file in the Sound Recorder:

- (1) Record

- (2) Settings

2) Options, if you have more than one record file:

- (1) Record: allows you to start recording.

- (2) Play: when there is a file in the list, it will play the recorded sound file.

- (3) Append: allows you to append additional recording to the previously recorded file. This function is available only for AMR format files. This option appears when there is any recorded file.

- (4) Rename: allows you to change the file name.

- (5) Delete: allows you to delete the selected file.

- (6) Delete All: allows you to delete all files in the sound record list.

- (7) Settings

- A. Preferred Storage (Phone / Memory Card): allows you to set the preferred storage.

- B. File Format (AMR / WAV/ AWB): allows you to select recording the sound in AMR and WAV format.

- C. Audio Quality: allows you to choose recording quality (Low/high)

- (8) Forward: allows you to use the sound file to User Profile, MMS, E-Mail, and Bluetooth.

## 6.4 FM Radio

The FM Radio application turns the mobile phone into a portable FM Radio device. It primarily provides users the interface to a single-chip electronically turned FM stereo radio for listening to live-broadcast stations. You must connect the earphone to your phone as it works as an antenna.

### To listen to the radio:

Connect the earphone to your phone. When entering the main screen, a default frequency is selected and it's power off for the first time of entrance.

Option:

- 1) Channel List: By selecting this menu, you can check the saved Channels.
  - (1) Play : allows you to listen the channel chosen
  - (2) Edit: allows you to edit the channel's name
- 2) Manual Input: allows you to search Channels directly by inputting the Frequency.
- 3) Preset Auto Search: By selecting this menu, you can search the channels automatically.
- 4) Settings
  - (1) Background Play (ON/OFF)
  - (2) Loud Speaker (ON/OFF)
  - (3) Record Format (WAV/ AMR/ AWB)
  - (4) Record Storage (Phone/ Card)
- 5) Record: With this phone, you can record the channel you are listening with shortcut [OK] key. When you press REC [OK] key, you can check "REC" sign on the right side of LCD and the recording time will be displayed below "REC" sign.
- 6) Append: allows you to append additional recording to the previously recorded file. This function is available for AMR and AWB format files. This option appears when there is any recorded file.
- 7) File List

### 6.5 Schedule FM Record

This menu allows you to set the Schedule FM Radio to record at a specific time. You can save up to 4 channels.

Option:

- 1) Schedule FM Record: ON/OFF
- 2) DATE/TIME: input the Day and start-end Time.
- 3) Repeat (Once/ Every day/ Days/ Weekly/ Monthly): select the repeat characteristics of the task.
- 4) Channel Settings: (Channel list/ Manual input)
- 5) Record Settings: (Record Format/ Audio quality/Storage/ Record File)

After you completed editing the option, press the [Done] soft key (right) to save the changes.

### 6.6 Melody Composer

With this menu, you can create an iMelody file. You can use this melody

as your Ring Tone, MMS attachment.

#### How to compose a melody:

##### 1) When you first use the Melody Compose,

1. Press the [Add] soft key (left)
2. Start composing a melody pressing the numeric keys.
3. Press the [Option] soft key and select "Save."
4. Edit and save a file name by pressing the [Option] soft key (left) and select "Done."

##### Option while editing:

- 1) Play: allows you to play the composed file before you save the file.
- 2) Play Speed (Fast / Normal / Slow)
- 3) Select Instrument  
(Piano / Guitar / Violin / Saxophone / Steel Drums / Flute / Harmonica / Trumpet / Music Box / Xylophone)
- 4) Save: when you are done composing, select "Save."

#### Note:

- 1: Do, 2: Re, 3: Mi, 4: Fa, 5: Sol, 6: La, 7: Si  
8: Vibration – allows the phone vibrates.  
9: Screen flickering  
0: Rest – indicates the rest place.  
\* : allows to modify the rest timing or the selected note.  
# : allows to add sharp to selected note.  
Up & down : allows to modify the octave of selected note.

##### 2) If you have more than a record file,

Press the [Option] soft key (left), and select 'Add' to start composing a melody.

#### Option:

- 1) Play: allows you to play the selected file.
- 2) Edit: allows you to edit the composed music.
- 3) Add: allows you to compose a new music file.
- 4) Rename: allows you to rename the selected file.

- 5) Delete: allows you to delete the selected file.
- 6) Delete All Files: allows you to delete all files in the list.
- 7) Forward: allows you to forward the composed file to User Profile, MMS, E-Mail, EMS, and Bluetooth.

## 6.7 Download Music

Allows you to download musics from Fly website

## 7. Business (Menu 7)

Use this menu to keep track of your schedule. You can also use convenient features, such as Calendar, to do list, Alarm, World Clock, Calculator, Unit Converter, Stopwatch.

To access this menu, press [Menu] in Idle mode and select **Business**.

### 7.1 Calendar

The calendar helps you to keep track of your monthly schedule.

When you access the Calendar menu, the calendar in Month view appears with today's date indicated by a colored bow line.

### 7.2 To Do List

You can view all saved tasks. It displays a task or tasks saved in the calendar. The To Do List shows the notes of the tasks from the oldest task to the latest task.

### 7.3 Alarm

This menu allows you to set the alarm to ring at a specific time. You can save up to five alarms.

To stop the alarm when it rings, press the [Stop] soft key (left) to stop the alarm or press the [Snooze] soft key (right) to snooze the alarm so that it will remind you again in four minutes.

### 7.4 World Clock

This feature allows you to check the current time based on Greenwich Mean Time (GMT) for major cities around the world.

From the world map, use right or left sensitive keys or scroll to the city you want. As the time line moves, the current day and time of the given zone displays.

### 7.5 Calculator

Use this menu to perform basic arithmetic functions and memory

functions; Addition, Subtraction, Multiplication and Division;

## 7.6 Units Converter

You can convert from one type of unit to another.

### To convert a value:

1. Select the weight or length options.
2. Select the type of conversion to be performed.
3. Input the value to be converted, and then press [Ok] to get the result.

You can enter a decimal point (.) using the [\*] key.

### Weight

Kg ↔ Pound,      Kg ↔ Ounce

### Length

Km ↔ Mile,              M ↔ Yard  
M ↔ Foot,              cm ↔ Inch

## 7.7 Currency Converter

### To convert currency:

1. Input a currency rate.
2. Press the [Ok] soft key (left).
3. Input the local currency value.
4. Press the [Ok] soft key (left) to get the result.

## 7.8 Stopwatch

This is a tool to measure timing; Split Stopwatch, Lap Stopwatch and nWay Stopwatch.

### Typical Stopwatch

There are Split Timing and Lap Timing stopwatch functions in this typical stopwatch menu.

- Split Timing: Split Timing is useful for measuring each player's record from start. The timing will be recorded earliest to latest.
- Lap Timing: You can use the Lap Timing function to measure each lap record.
- View Record: When you save the timing records from the Split Timing and the Lap Timing, it will be saved and listed in this menu.

### 4Way Stopwatch

You can use 4-way direction icons for measuring times for each

direction.

When you press a direction icon, the direction stopwatch will start timing, and other direction stopwatch will pause the timing. When you press the paused direction's direction icon, the stopwatch will resume timing.

### 7.9 Countdown

Allows you to indicate the time remaining.

## 8. Services (Menu 8)

This menu allows you to use services including SIM card additional services, WAP and Data Service.

### 8.1 Opera Mini

Enables you to have access via the browser to a full web experience through your phone.

### 8.2 Services +

Enables you to have access to different services depending on your network.

### 8.3 WAP

The Wireless Application Protocol (WAP) on your phone allows you to access the wireless web. Using the web browser, you can access up-to-date information and a wide variety of media content, such as wallpapers, ring tones, and music files.

To access this menu, press [Menu] and select **Services** then **WAP**.

#### Homepage

When you choose [Homepage] menu, WAP browser opens the main page of home site that you had activated among the sites in [Profile].

#### Bookmarks

You can make bookmark data in your phone. And you can connect to the site directly.

#### Recent Pages

When you choose [Recent Pages] menu, WAP browser opens the

latest WAP page.

### Enter Address

If you know the URL of the site, you can go to the site directly by inputting the URL.

### Settings

This option allows you to set the WAP settings. There are several profiles of sites in this phone. You can activate one of them as a home site and change or set each profile.

- Edit Profile: Shows the name of selected site and you can edit the profile(s).
- Browser options allow you to set time out duration and to set or not image view.
- Service message settings
- Clear Cache: clears the most recent site files that you have downloaded in the temporary memory.
- Clear Cookie: deletes cookies in the memory.
- Trusted Certificates: saves and lists the Trusted Certificated from the WAP sites. You can view and delete the certificates.

### 8.4 Data Account

This menu allows you to change the settings for the GSM and GPRS network services. For further details, contact your service provider.

#### GSM

This setting allows you to change the settings for the GSM network as following:

- Account Name: Edit the account name.
- Number: Enter the server phone number.
- User Name: Enter the user name required to connect to GSM Data network.
- Password: Enter the password required to connect to GSM Data network.
- Line Type: Choose a network connection type between Analogue and ISDN.
- Speed: Select the desired speed from 4.8, 9.6 Kbps and 14.4 Kbps.
- DNS (000.000.000.000): Enter the IP address

#### GPRS

This setting allows you to change the settings for the GSM Data network as following.

- Account Name: Edit the account name.
- APN: Enter the access point name used for the address of the GPRS network gateway.
- User Name: Enter the User Name required to connect to GPRS network.
- Password: Enter the password required to connect to GPRS network
- Auth. Type: Select the authorization type from Normal and Secure.

#### **8.5 SIM Toolkit** (depends on SIM)

If you use a SIM card that provides additional services, the STK menu displays. For details, please refer to your SIM card instructions or contact your service provider.

## **9 Fun & Games (Menu 9)**

Fun & Games menu provides you with Java interface and Games. You can use your phone as your entertainment center.

### **9.1 E-book reader**

The viewer application provides an easy way for you to read documents stored in the phone's memory or a memory card.

### **9.2 Java**

Your mobile phone features a Java run-time environment, which allows you to run Java applications, such as games downloaded on the network.

The first time you launch Java, a message appears to alert you that the installation and configuration of Java will take several moments. This is a one-time occurrence.

This phone only supports Java games downloaded from the network provider based on this handset model.

### **9.3 Java Settings**

You can setup audio, network profile, and free data space.

- 1)Java Audio: allows you to set the Java audio sound to on or off.
- 2)Java Vibration: allows you to set the vibration to on or off.
- 3)Java Network: you can select the java network from the list.
- 4)Heap Size: you can view the remaining heap size.

### **9.4 Java Default Security**

Enables you to activate Java security settings.

### **9.5 Games**

This phone provides you embedded games. Please see the following instructions for each game, and enjoy the games.

When you select a game, you will have the following menu:

- Start Game: allows you to start playing the game. When you press the right soft key, it will go back to menu with Resume option added. Select "Resume" to continue playing the game.
- Game Level: you can choose the game level from Easy/Normal/Hard.
- Best Grades: will display the best records in each level. Press [Reset] soft key (left) to reset the best grades record.
- Game Help: describes about the game and an instruction.

### **9.6/7/8/9 Download Games/Sounds/Video/Pictures**

Allows you to download multimedia content directly from Fly website

## **10. Settings (Menu 10)**

The Settings menu provides you with various setting options to customize the phone to your preferences and needs. You can also reset the settings to their default values.

To access this menu, press [**Menu**] in Idle mode and select **Settings**.

### **10.1 Phone Setup**

Many different features of your phone's system can be customized to suit your preferences.

#### **Time and Date**

You can set time and date for your phone.

- Set Home City  
This menu allows you to set a city as your home city.
- Set Time/Date

This menu allows you to set the current time and date displayed in the idle screen. Also you can set the day light saving to On/Off.

- **Set Format**  
This menu allows you to set Time Format and Date Format.

#### **Schedule Power On/Off :**

You can set a schedule for powering on and off your mobile phone. When you schedule the power on or off, the phone will power on or off at every scheduled time. When the phone powers on, it will alarm with alarm tone. It is useful when you want to turn off your phone while you are sleeping, and let the phone power on in the morning so that you would not miss any call or alarm

#### **Language**

Use this menu to select one of several languages for the display text. Select your preferred language and press [Ok] soft key (left) to save the setting.

#### **Preferred Input Methods**

This menu allows you to define your preferred input method. Once you set the preferred input method, next time you edit in text input mode, it will reflect the setting until you change to another.

#### **Sound Effect**

This menu allows you to define sound effect (in call background/Reverb effect/3D surround).

#### **Greeting text**

Turn On or Off, and edit the greeting text of the phone.

#### **Dedicated keys**

You can use the dedicated icons as shortcut keys to access specific menus directly from idle mode. Select from the menu lists, and press [Ok] key to change the dedicated menu.

#### **Auto update of date and time**

This menu allows the phone to update the current date and time automatically from the network. You can turn on or off this function by

pressing the [On] or [Off] soft key (left).

#### **LCD Backlight**

Enables you to set up backlight duration.

### **10.2 Display Characteristics**

This menu allows you to customize desired phone display items as below.

- Wallpaper
- Power On Display
- Power Off Display
- Show Date and Time
- Show Owner Number
- Transition effect

### **10.3 Call Setup**

The following Call Setup features are network services. Please contact your network service provider to check availability and subscribe to the feature.

#### **Caller ID**

This network service informs your Caller ID to the recipient when you call out.

You can set the following options for the Caller ID function as following.

- 1) Set By Network: The network will decide whether to send or hide the Caller ID,
- 2) Hide ID: If you do not want to send your phone number, select [Hide ID] menu.
- 3) Send ID: It will send the Caller ID when you call out.

#### **Call Waiting**

This network service informs when someone is trying to reach you during another call. You can specify the call waiting option for voice calls only.

The following options for each service are available:

- 1) Activate: activates the call waiting service.
- 2) Deactivate: deactivates the call waiting service.

3) Query Status: displays the status of the call waiting service.

#### **Call Divert**

This network service reroutes incoming calls to the number that you specify.

Example: you may wish to divert your business calls to a colleague while you are busy. Call diverting can be set up in the following ways.

- Divert All Voice Calls: diverts all voice calls.
- Divert If Unreachable: diverts calls, if you are not in a coverage area of your service provider.
- Divert If No Answer: diverts calls, if you do not answer the phone.
- Divert If Busy: diverts calls, if you are already making another call.
- Divert All Data Calls: diverts all data calls.
- Cancel All Divert: cancels all call diverting options.

**Note:** The phone sends your settings to the network and the network will acknowledge the settings. You can deactivate all call diverting settings by selecting the **Cancel All**.

#### **Call Barring**

This network service allows you to restrict your call for Outgoing Calls, Incoming Calls.

You can also cancel all call barring settings. You will be able to make and receive calls normally.

You can set and change the call barring password obtained from your service provider using this option. You must enter the current password before you can specify a new one.

**Note:** The phone sends your settings to the network and the network returns the acknowledgement. You can deactivate all call barring settings by selecting the **Cancel All**.

#### **Call Time Reminder**

You can set the call time reminder. Options are Off, Single, and Periodic.

#### **Call Time Display**

If you want, you can set the phone to display the call time.

#### **Auto Redial**

This option allows you to set redial automatically when the call receiver is busy. If you set [Auto Redial] on, it will redial 10 times to make a call.

#### **Black list**

Enables you to select a number as black listed.

### **10.4 Security Setup**

Use this menu to protect the phone against unauthorized use by managing the several access codes of your phone and SIM card.

There are six types of security setting categories, and you can optimize security mode by choosing sub menus in "Security Setup" in "Settings" menu. These security settings will help you to keep privacy and to prevent other people from using the phone without your permission.

**Note:** If you enter an incorrect PIN/PIN2 three times in succession, the SIM card is blocked. To unblock it, you need to enter your PUK/PUK2 (Personal Unblocking Key). The codes are supplied by your network operator.

#### **SIM Lock**

When the SIM Lock feature is on, the phone only works when you enter PIN code for the SIM card. If you turn on the phone with the SIM card, the phone will ask for the password. Once the correct password is entered, the phone will work with the SIM card.

#### **Phone Lock**

When the Phone Lock feature is on, user must enter the password each time you turn on the phone. Making a call or operating the phone is not available without the password.

#### **Auto Keypad Lock**

To prevent unwanted accidental key presses, you can use this auto keypad lock function. You may not make a call or operate the phone until you press the unlock code. However, answering a call, receiving messages are available without entering the unlocking key sequence.

#### **Fixed Dial**

When the Fixed Dial mode is enabled, the person using this phone can call to the phone numbers stored in the Fixed Dial List only.

To make a call to the number not starting the numbers stored in Fixed Dial List, you must enter the PIN2 to disable Fixed Dial mode. If the

SIM card does not have PIN2, this feature is not supported.

#### **Barred Dial**

When the Barred Dial mode is enabled, the person using the phone cannot call numbers in the barred dial list. To call a barred number, you must enter the PIN2 to disable the barred dial mode. If the SIM card does not have PIN2, it will not support the Barred Dial feature.

#### **Change Password**

To change the password, input the current password, and then enter the new password.

**Note:** The initial password is "0000." After you change your password, you will need to input the password. If you forgot your password, contact the service center.

### **10.5 Restore Factory Settings**

This feature would reset the phone to the same settings as those configured at the factory. In this case, it does not delete the downloaded objects and phonebook records.

You will need to input password to restore factory settings. The initial password is 0000.

## **11. Connectivity (Menu 11)**

Your phone allows you to connect to a variety of external devices via Bluetooth, USB, or the Network. This menu provides you with more features to set up the connection with these external devices.

### **11.1 Bluetooth**

Options	Description
Power On/Off	Turn on/off the Bluetooth feature.
Inquiry Audio Device	Search the devices that are available.

Remote Control    Select to control your PC by Bluetooth (media player, mouse control, slide show)

My device            Select to connect to devices that you predefined.

Active Device  
Settings            Activate the selected device.  
Allows you to set the following  
Options : Visibility, Change Device  
Name,    Authentication, Audio path  
and FTP Setting

#### **Making a Bluetooth connection**

To make a Bluetooth connection, first of all, make sure you switch on the Bluetooth feature in the option On/Off. Then select My devices.

#### **Connection with an audio device**

Choose <Inquiry Audio Device>. When the list of device appears, select the one you want to make a connection with it. As soon as you select a device and a connection is made, you are prompted to enter a passkey in order to pair with the device. This passkey is supplied by the manufacturer of the other Bluetooth device, refer to its documentation for further information. The passkey feature ensures that only legitimate connections are allowed to connect either to your device or the selected device.

*If you do not use the Bluetooth feature for some time, you should deactivate it in order to conserve battery power.*

### **11.2 Network Setup**

Network Setup helps you in Network Selection, selection of Preferred Network, and GPRS connection

#### **Network Selection**

The Network Selection feature enables you to select automatically or manually the network used when roaming outside of your home network.

**Note:** You can select a network other than your home network only if it has a valid roaming agreement with your home network.

Options are as following:

- 1) Automatic: You will be connected to the first available network when roaming
- 2) Manual: The phone scans for the available network, and you can select the network manually.

#### **Preferred Networks**

You can set your preferred networks from PLMN list.

You can Change Priority and Delete

#### **GPRS Connection**

Press [Change] soft key (left) to change the setting for the GPRS connection.

It will switch and save the GPRS connection to set on:

- 1) When Needed.
- 2) Always

### **11.3 USB**

This option is only visible when you connect a USB cable to the phone.

This feature allows you to connect your phone to a PC via USB cable. You can carry out the following operations:

Mass Storage	Acts as a mass storage for your mobile phone data on the computer and recover the data saved in the computer, upload and download files, access the internal memory and micro SD card (if present) and the size of transfer is unlimited until your memory is full.
Webcam	Acts as a webcam for your PC.
Fly PC Tool	Acts as a modem for your phone and PC connection. You can use the software provided to edit your mobile

phone contacts pictures and melodies.

Pictbridge

Allows you to connect your handset to a pictbridge device.

*When the transfer is finished, please make sure that you safely remove your device based on the instruction of your computer.*

#### **Using Mobile Phone Tools**

Mobile phone tools help you make the best use of your mobile phone for data and document transmission through the Mobile Phone Tools software. With this software, you can upload and download files, send and receive SMS and edit your mobile phone contacts with your PC. To activate this feature, you need to install and open the Mobile Phone Tools from the provided CD-Rom on your PC.

Then connect the phone via the USB cable. Enter Connectivity menu and select Com port. On the computer screen, press Connect.

## **12. File Manager (Menu 12)**

Use this menu to navigate the stored files in the phone or the microSD Card. You can open files and use them in a way the phone supports, and see the total memory used and free space in the storage.

### **1) Checking the Memory of the Phone and the microSD Card.**

You can view the remaining (free) memory and total memory of the phone and the microSD Card.

### **2) Opening the memory storage**

- Open: allows you to open the storage, and view folder(s) and file(s).
- Create Folder: allows you to create a folder.
- Format: allows you to format the selected memory. Be careful that it will delete all data files in the storage.

### **3) Opening a Folder**

- Open: allows you to open the folder and view a list of files in the folder.
- Create Folder: allows you to create a folder.

- Rename: allows you to edit the folder name.
- Delete: allows you to delete the folder.
- Sort: allows you to sort the files in the folder by name, by type, by time and by size.

#### 4) Opening a File

You can view, play, and setup files in the storage or the folder.

- View / Play: allows you to view or play the file.
- Forward: allows you to forward the file to use as the following:  
**Image File** (bmp, jpg, and gif format) **options** are available to forward to Wallpaper, Screen Saver, Power On Display, Power Off Display, Phonebook, MMS, E-Mail, and Bluetooth.  
**Sound File** (mid, wav, mp3, AMR and iMelody format) **options** are available to forward to User Profile, MMS, E-Mail, and Bluetooth.
- Detail: displays information of the file, date and size.
- Rename: allows you to edit the file name.
- Copy: allows you to copy the file to the other folder or other storage.
- Move: allows you the move the file to the selected folder or storage.  
The file will be removed from the original folder and paste to the selected folder.

**Note:** After selecting Copy or Move option, press the left or right navigation keys to access to the upper or lower folder.

- Delete: allows you to delete the selected file.
- Delete All Files: allows you to delete all files in the selected folder.
- Sort: allows you to sort the files by name, by type, by time, and by size.

**Note:** Depending on the software installed or your service provider or country, some of the descriptions in this guide may not match your phone exactly.  
Depending on your country, your phone and accessories may appear different from the illustrations in this guide.