

Technical Document

Document Title: WP826B CDMA After-sales Services
Manual Venezuela Version (Level 2)

All 35 Pages

(Cover Included)

Drafted Kuang Fengzhi

Checked Zhong Yapeng

Signed _____

Standardize _____

Approved _____

ZTE CORPORATION

Modification Record

Document No.	Version	Drafted	Date	Reason	Main Modification Points
		Kuang Fengzhi	2007-12-31	None	None
Notice: 1. Once you modify the document, you need to fill in the table. 2. Please fill “none” in the modification reason and main modification points during the initial document making.					

CONTENT

1. PRODUCT OVERVIEW.....	1
1.1 STANDARD CONFIGURATION.....	1
1.2 SPECIFICATIONS	1
1.3 FEATURE INTRODUCTION	1
1.4 INTERNAL NUMBER	2
2. INTERNAL STRUCTURE AND PRINCIPLE	2
2.1 FUNCTION TEST	2
2.2 DOWNLOADING SOFTWARE	2
2.3 DISASSEMBLING FLOW	10
2.4 COMPONENTS	15
2.5 .BLOCK DIAGRAM FOR PRINCIPLE	16
2.6 BASIC DEVICE DISTRIBUTING	16
2.7 MAIN TEST POINTS	18
3. FLOW CHART OF FAMILIAR TROUBLESHOOTING (LEVEL 1)	18
3.1 COMPONENTS FAILURE.....	18
3.2 SWITCH-ON FAILURE	19
3.3 HANG	19
3.4 CHANGE FAILURE	20
3.5 SERIAL PORT DISCONNECTED	20
3.6 CARD UNIDENTIFIED	21
3.7 DISPLAY FAILURE.....	21
3.8 KEY-PRESS FAILURE.....	22
3.9 NO RINGING TONE.....	22
3.10 NO SIGNAL.....	23
4. FLOW CHART OF FAMILIAR TROUBLESHOOTING (LEVEL 2)	23
4.1. MAIN POWER CIRCUIT FAILURE	23+
4.2. POWER-ON FAILURE	24
4.3. NO HAND-FREE STATUS PROMPT.....	25
4.4. INEFFECTIVE KEYS	26
4.5. CARD UNIDENTIFIED	26
4.6. BATTERY DETECTION FAILURE	27
4.7. SERIAL PORT DISCONNECTED	27
4.8. CHARGING FAILURE/ABNORMALITY	28
5. SCHEMATIC DIAGRAM FOR MAIN BOARD AND MODULE.....	28
5.1. SCHEMATIC DIAGRAM FOR MAIN BOARD.....	28
5.2. SCHEMATIC DIAGRAM FOR MODULE	29
6. PART LIST.....	30
6.1 FWP PART LIST	30

6.2	MB PART LIST	30
6.2.	MODULE PART LIST	31

1. Product Overview

1.1 Standard Configuration

No.	Part Name	Qty
1	FWP	1
2	Battery	1
3	Power Adapter	1
4	Handle	1
5	Phone Cable	1

1.2 Specifications

- ◆ Dimension: 176mm*213mm*76.5mm
- ◆ Weight: about 900g
- ◆ Talking Time: About 2~4 hours
- ◆ Standby Time: About 80~160 hrs
- ◆ Battery: 1800mAh; NiMH Battery

1.3 Feature Introduction

- ◆ Supporting incoming/outgoing call prompts query
- ◆ Supporting call transferring and call waiting
- ◆ Supporting three-party call
- ◆ Supporting alarm clock setting indication
- ◆ Supporting 16KHZ/12KHZ pulse billing
- ◆ Supporting indoor and outdoor antenna
- ◆ Supporting PC fax (additionally requires fax software)
- ◆ Supporting integrated or separated telephone and card
- ◆ Supporting circuit data service of 14.4K

1.4 Internal Number

Internal Model	External Model
WP826B	WP826B

2. Internal Structure and Principle

2.1 Function Test

Version Check Instruction: *983*837#

ESN Check Instruction: *#06#

Testing Functions:

Input “*983*0#”, perform LCD, keypad, audio circuit test in order.

- LCD test: check whether there are missing lines or points on LCD while LCD displays black → black and white square → white and black square in order.
- Keypad test: check each of the keys except the handfree key to ensure correct input and homogeneous elasticity of keys.
- Audio circuit test: press the handfree key to check whether the volume under handfree status is normal and whether there is noise. Speak something to the fixed station to decide whether there is echo. Pick up the handle and speak to it to check whether there is echo.

2.2 Downloading Software

- ◆ About software downloading

Make sure that the software of every FWP sent to repair is updated to the latest version. In other words, each repaired FWP is updated to have the latest version. During downloading the software, keep the FWP powered on and do not take down the FWP until the downloading ends up and the PASS prompt appears

- ◆ Cables for downloading data

Name of the cable: WP806A FWP serial-port-to-serial-port data cable

Part number of the cable: 052621600102.



- ◆ Name of the cable: WP806A FWP USB-to-serial-port data cable

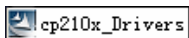
Part number of the cable: 052621600103



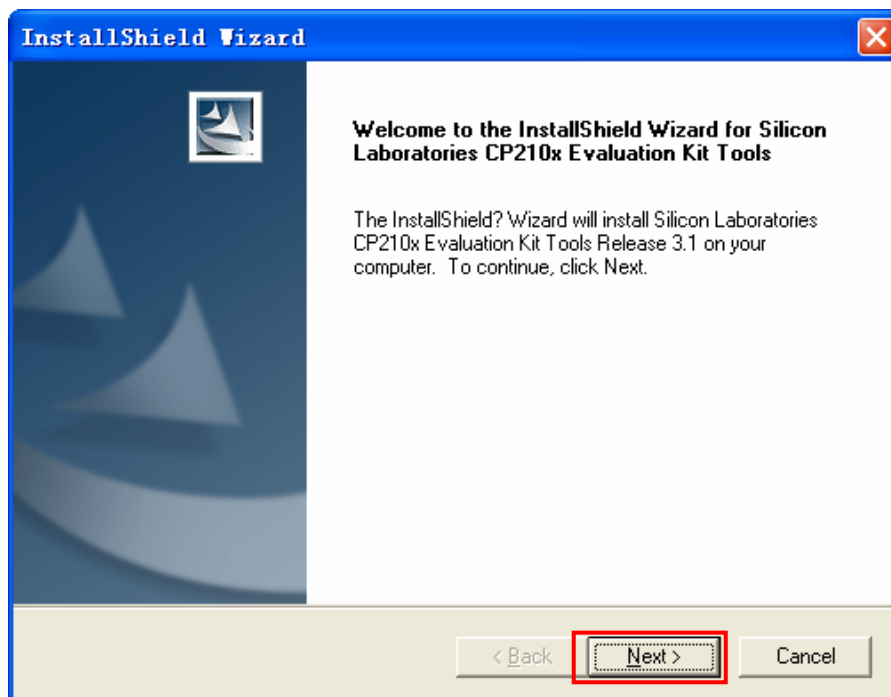
Notice: When using WP806A FWP USB-to-serial-port data cable to download software, it is necessary to install the driver for the data download cable. In case of WP806A FWP

serial-port-to-serial-port data cable is used, the driver installation is unneeded. This document only introduces the operation process while downloading software using WP806A FWP USB-to-serial-port data cable.

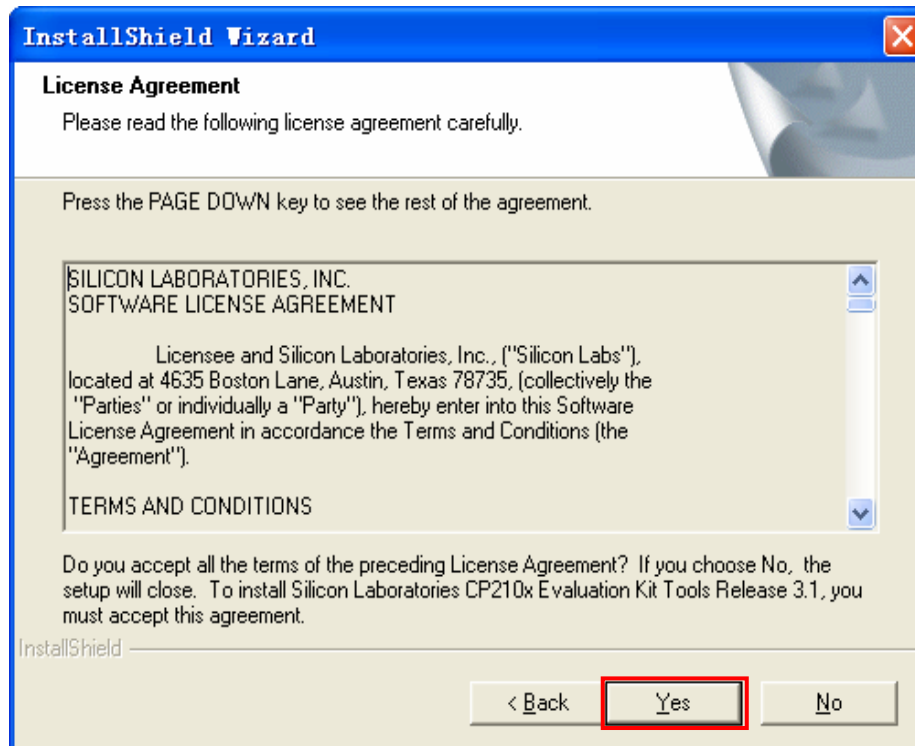
- ◆ Double-click the following icon for data download cable driver installation.



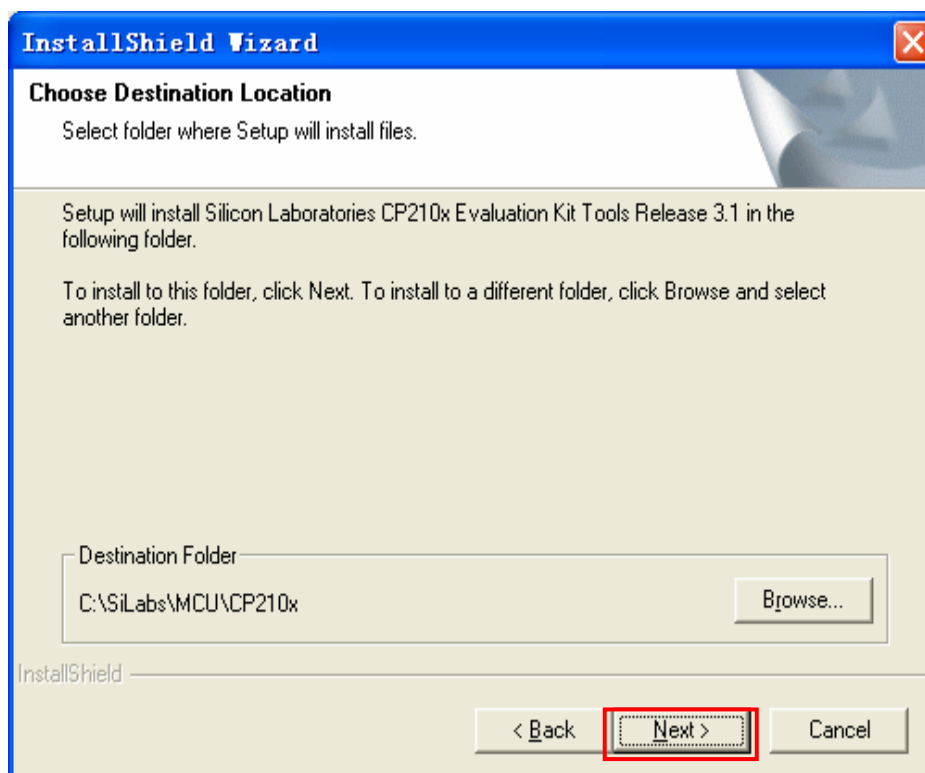
- ◆ Connect the cable with the computer:
- ◆ In the driver program wizard interface, click **Next**.



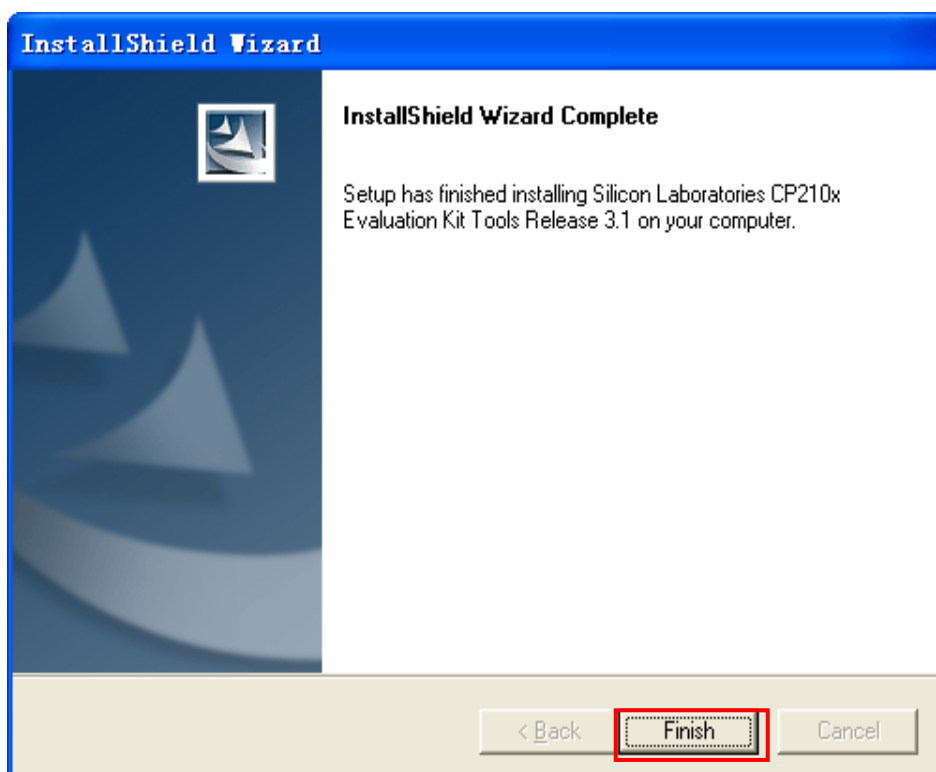
- ◆ Click **Yes**.



- ◆ Click **Next**.



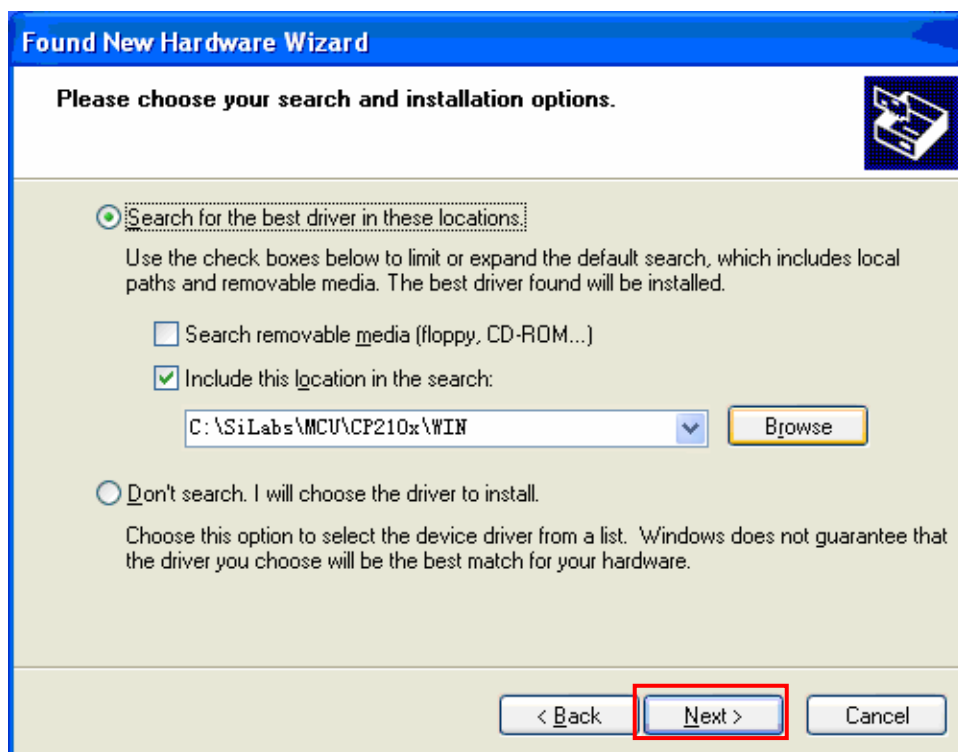
- ◆ Click **Finish** to end up the installation of the data-download cable driver.



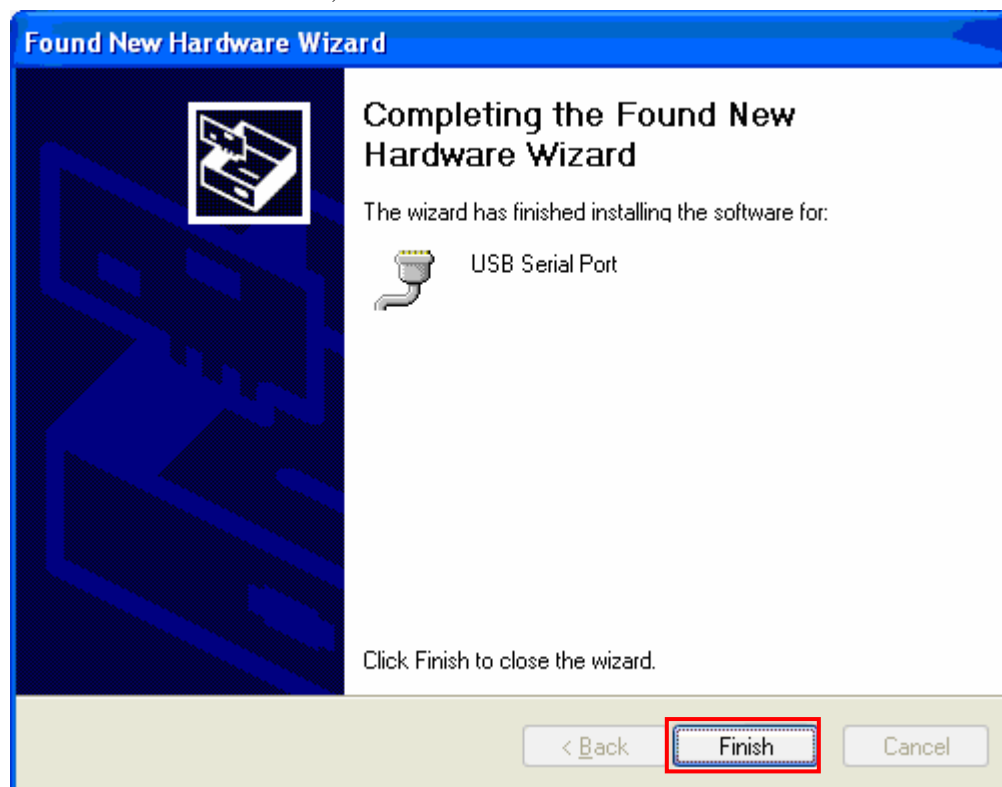
- ◆ Connect the data-download cable with the computer. An interface as shown below appears. Then click **No, not this time**→**Next**.



- ◆ Click **Next**.

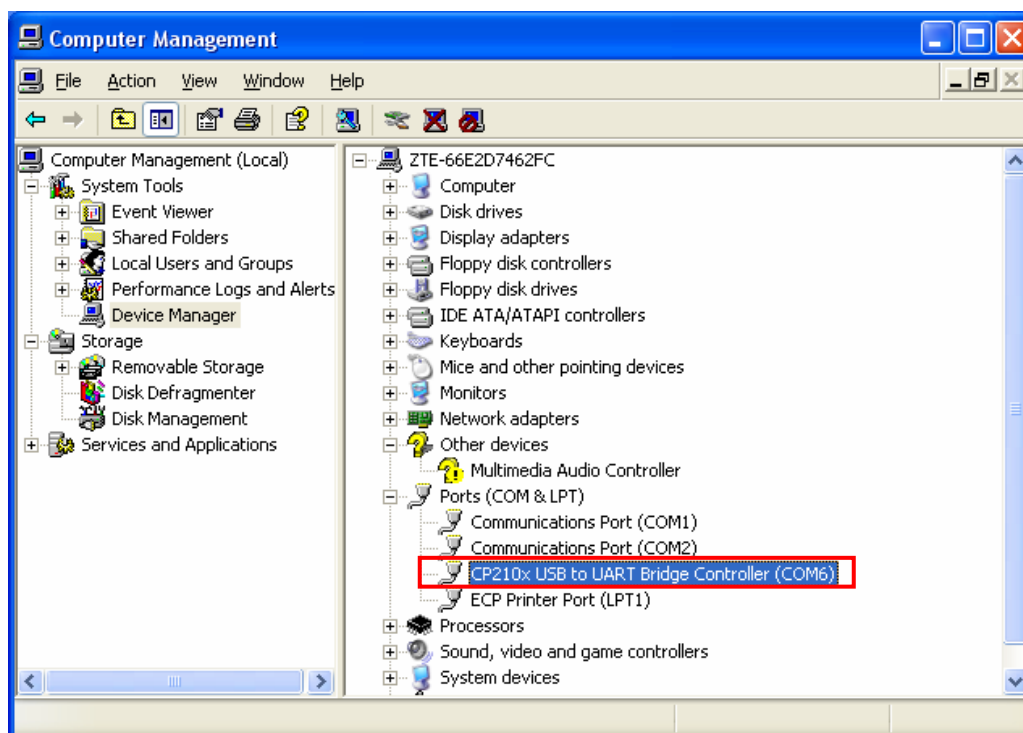



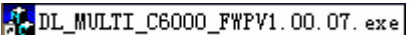
- ◆ When the installation finishes, click **Finish**.

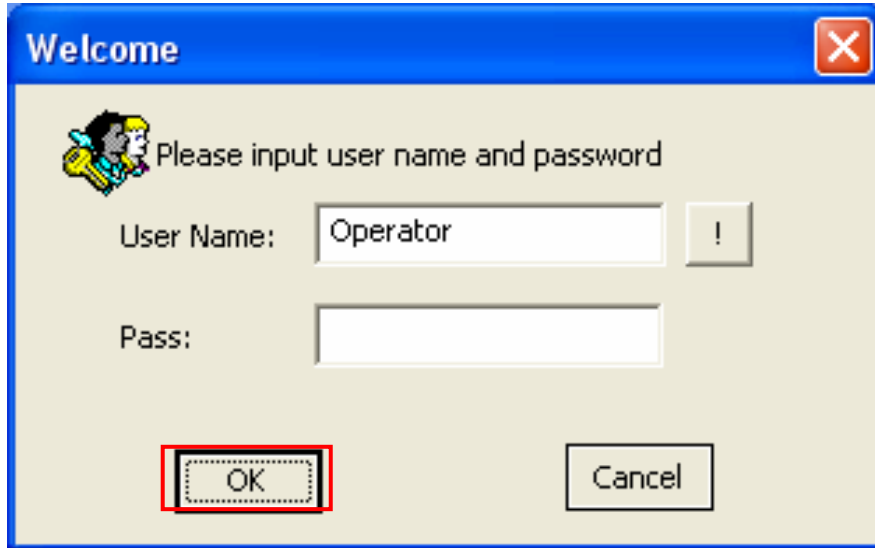


Note: If the Wizard interface appears again, repeat the steps above.

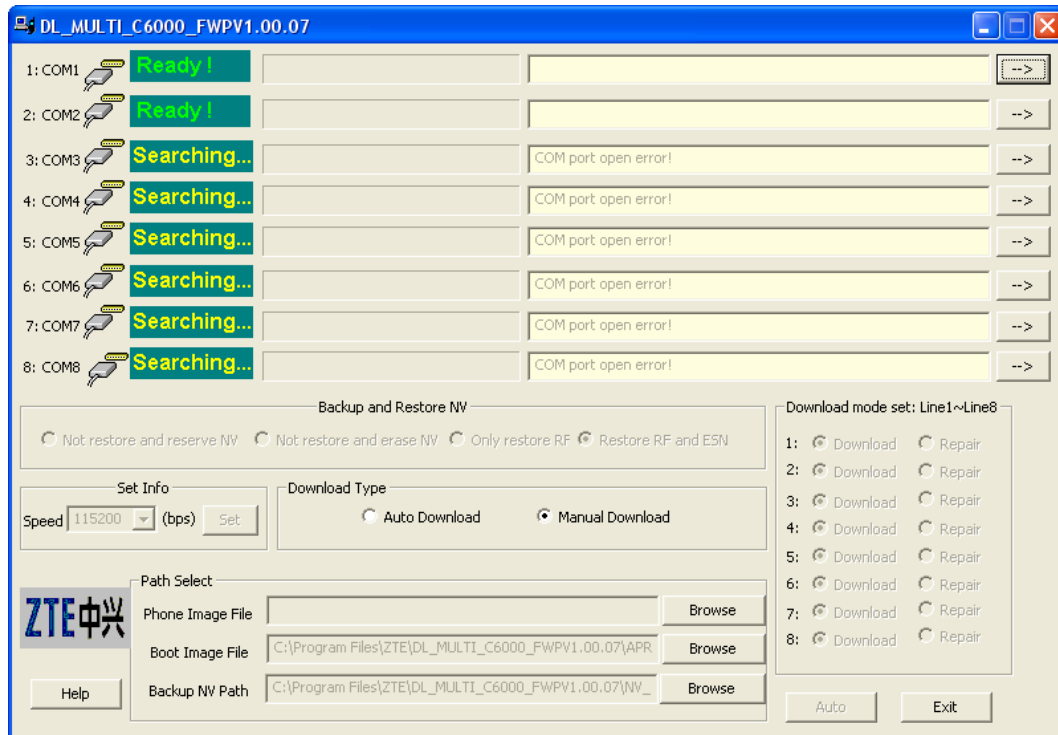
- ◆ Click **My Computer**→**Device Manager**→**Ports** to view the serial port.



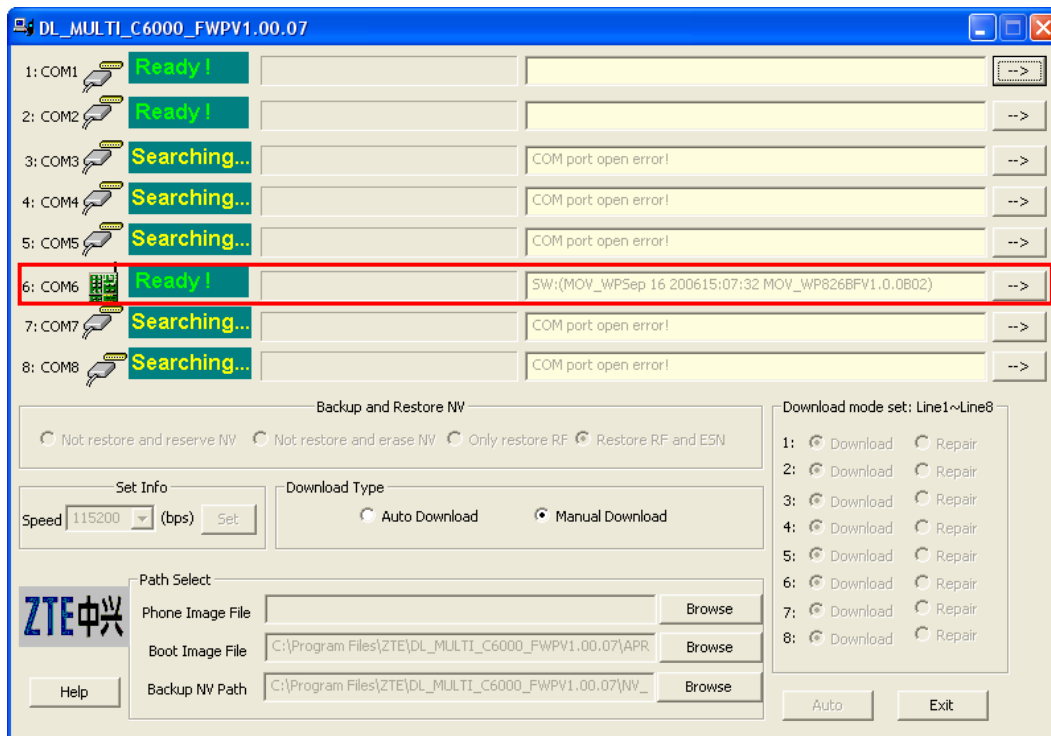
- ◆ Install the data-download platform: DL_MULTI_C6000_FWPV1.00.07

- ◆ After the installation is finished, double-click the shortcut icon.

- ◆ Double-click the shortcut icon to open the **Welcome** interface. Click **OK**.



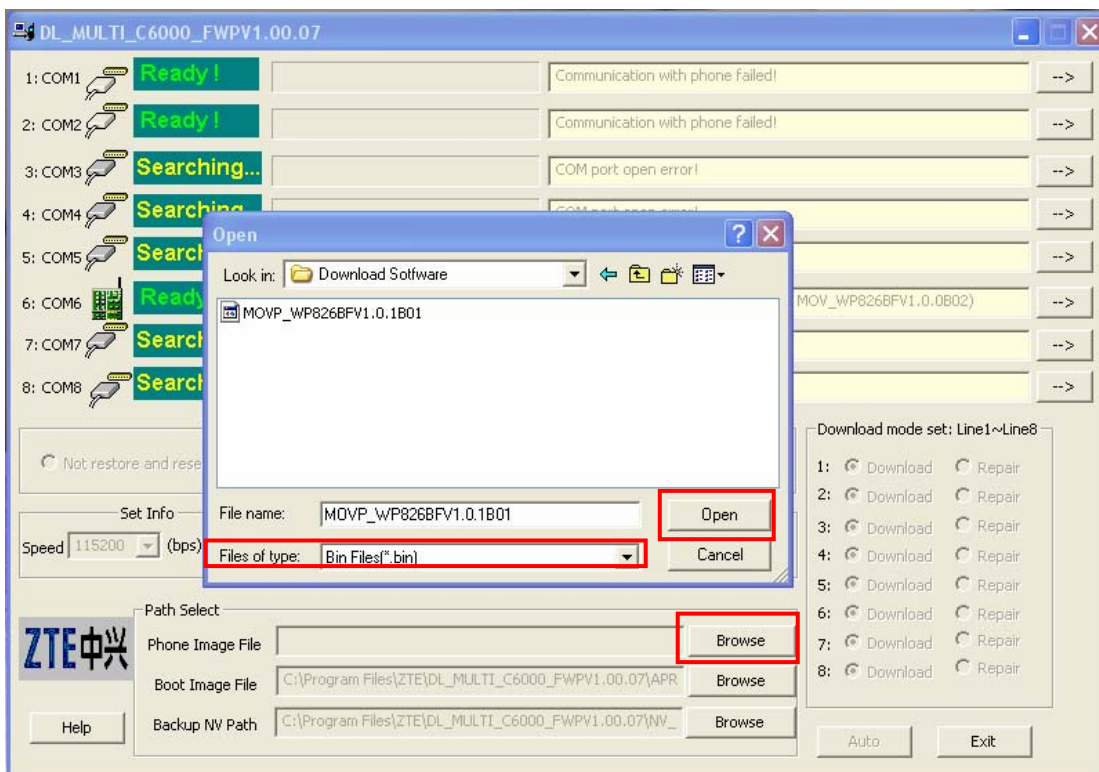
- ◆ The interfaces appear during downloading are as shown below.




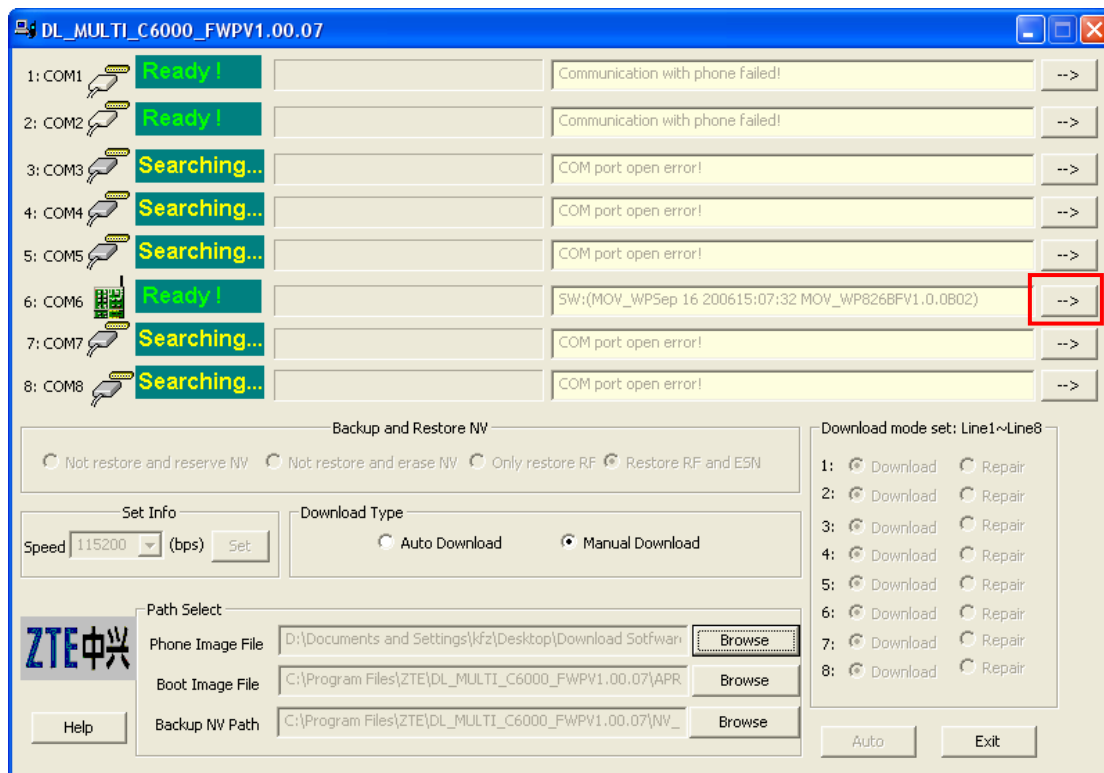
- ◆ Connect the data cable, FWP, serial port to read the information about version of the fixed station.



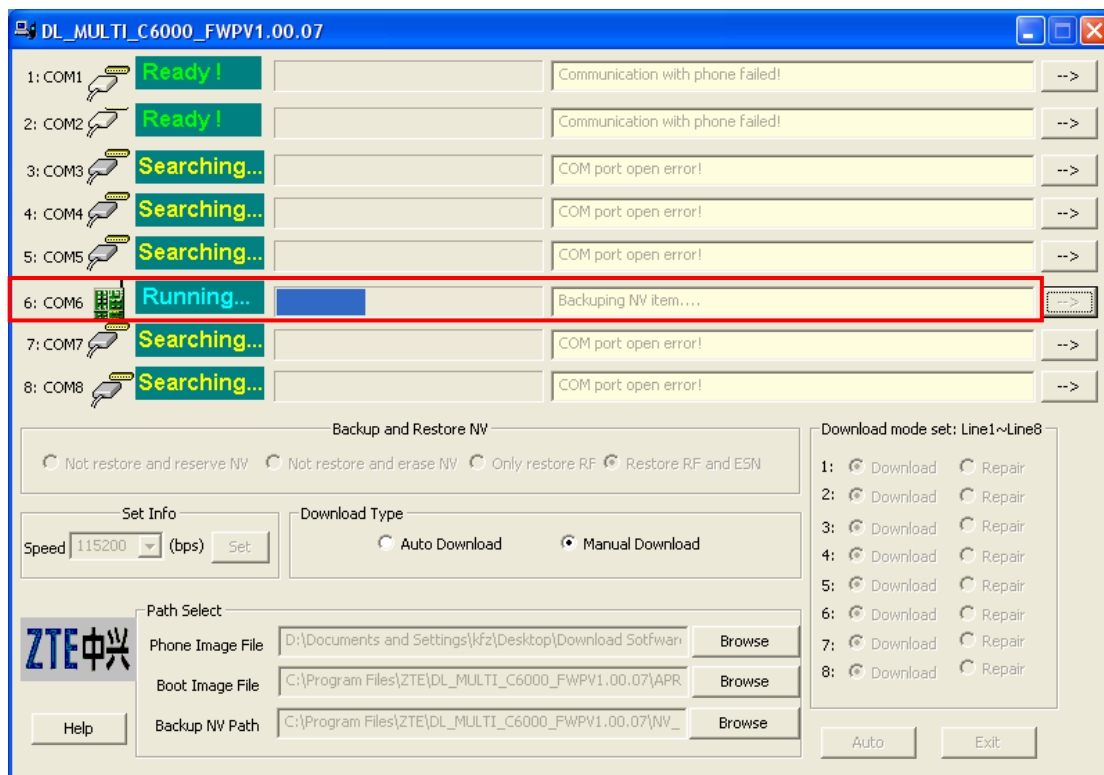
- ◆ Click Update Version File, select*.bin file type→proper version file→Open.



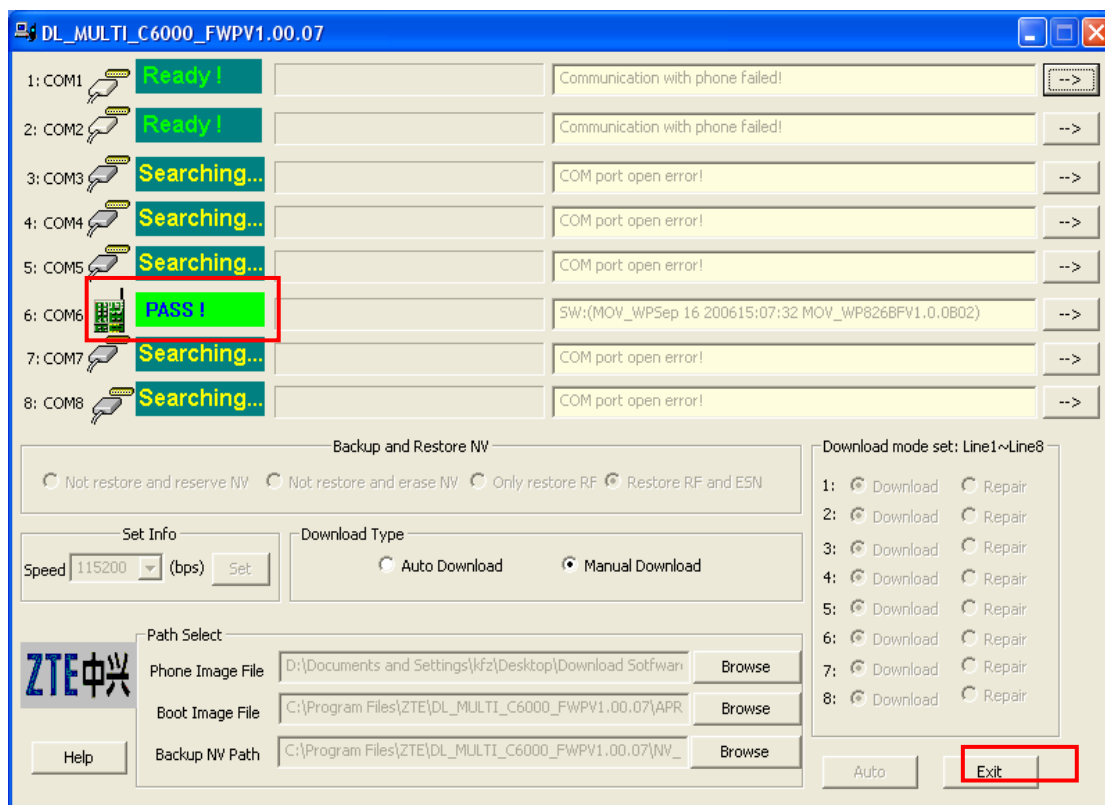
- ◆ Select Download Manually and then click button  to start downloading the software.



- ◆ During downloading, the interfaces are as shown below:



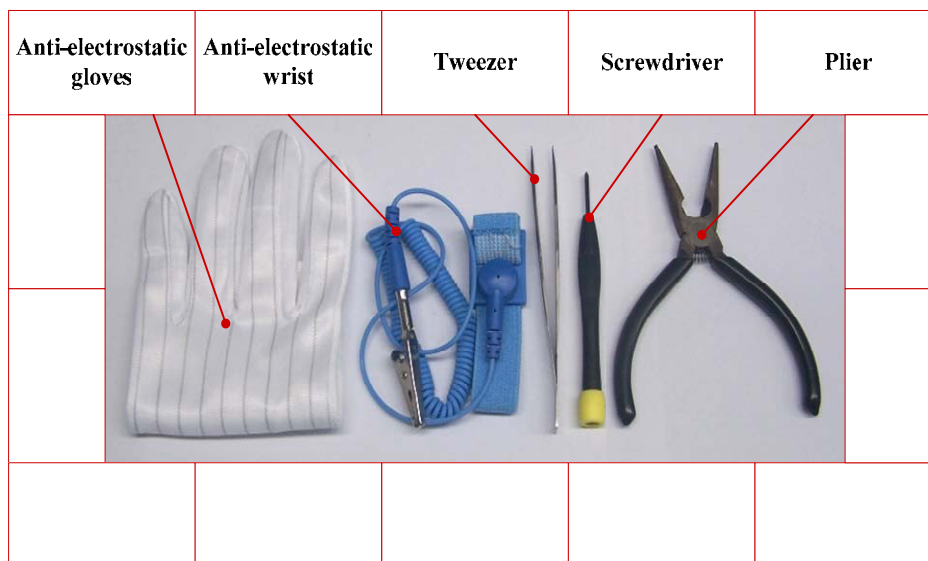
- ◆ After the downloading is finished, click **Exit** to end up the downloading.



2.3 Disassembling Flow

Notice: WP826B FWP is available in two colors, black and while. WP826B FWP for Venezuela is black. In this document, white WP826B FWP is used to describe the disassembling flow of WP826B FWP for Venezuela.

- ◆ Tools used to disassemble the fixed station.



- ◆ Screw off the antenna.



- ◆ Screw off the antenna ring using the plier.



- ◆ Find the positions of the interfaces from the left to the right, antenna interface→data interface→power interface→battery switch.



- ◆ Pay attention to the positions of five screws.



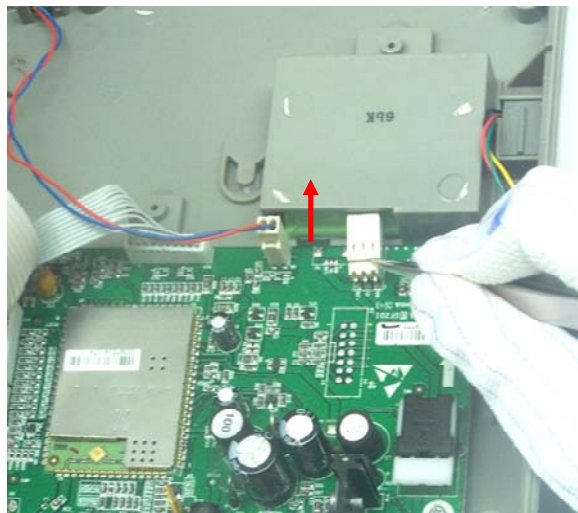
- ◆ Take down the battery cover and the card cover.



- ◆ Separate the surface shell and the bottom shell with the disassembly.

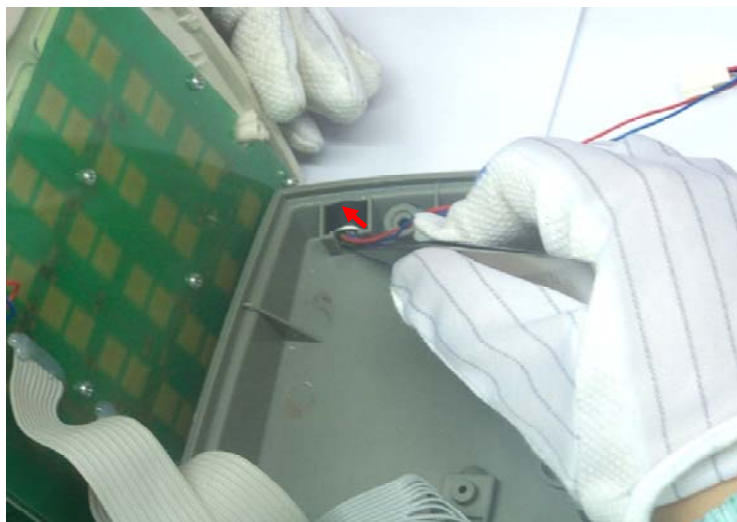


- ◆ Take out the battery using the tweezers, paying attention to the position of the battery interface.

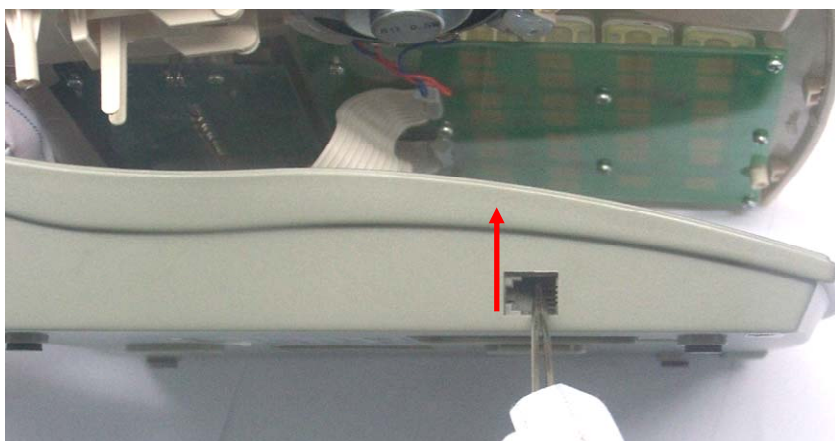


- ◆ Take down MIC using the tweezers.

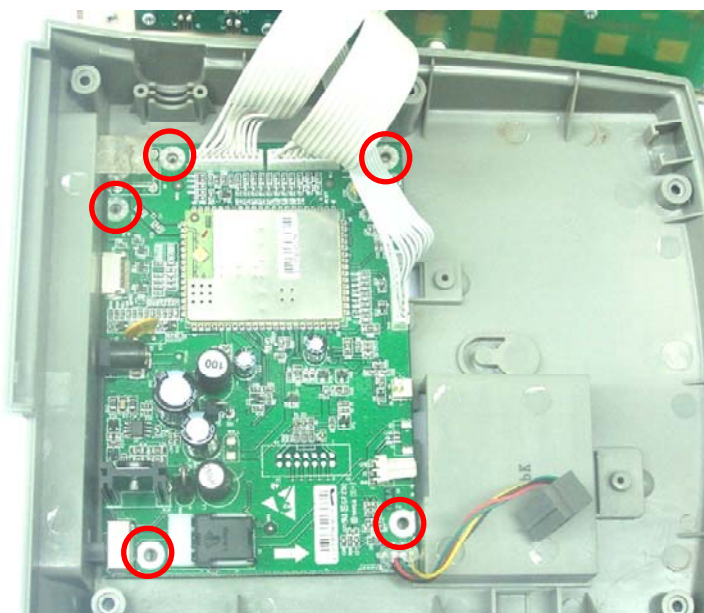




- ◆ Take the handle interface out from the slot using the tweezers.



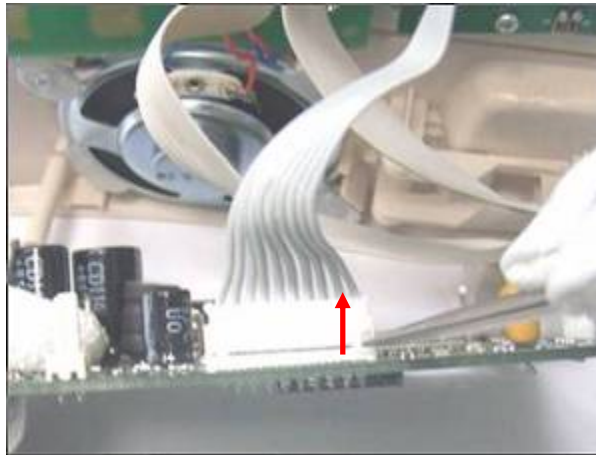
- ◆ Pay attention to the positions of five screws used to fasten the main board.



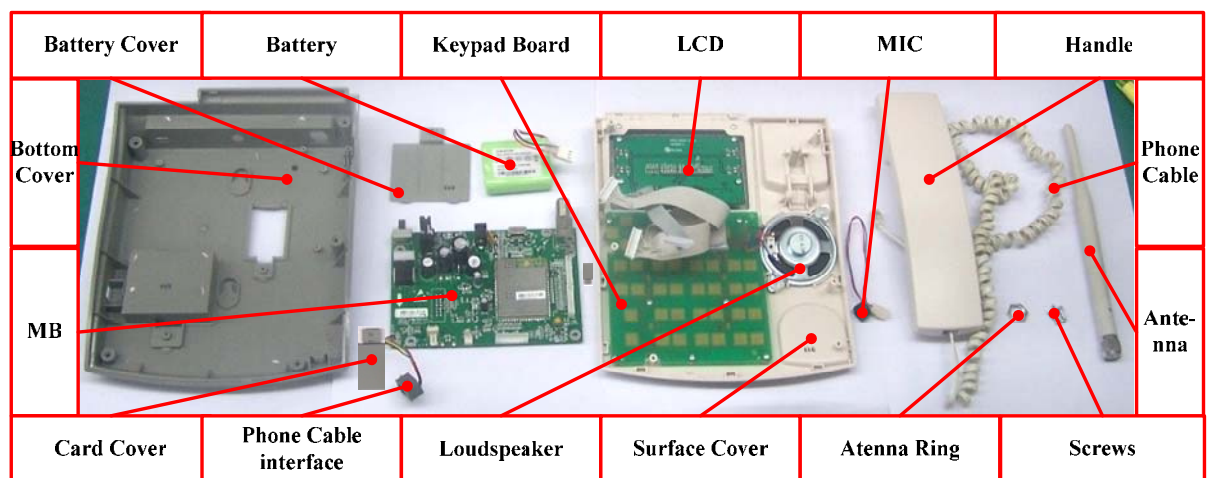
- ◆ Pay attention to the connection of LCD and keypad cable.



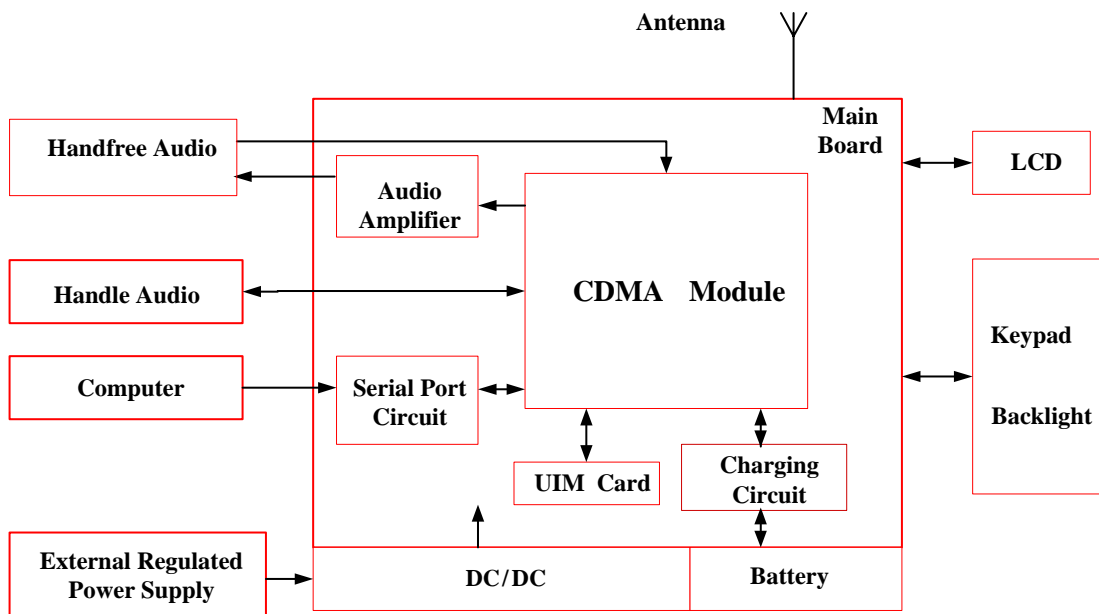
- ◆ Take out the cable interface using the tweezers.



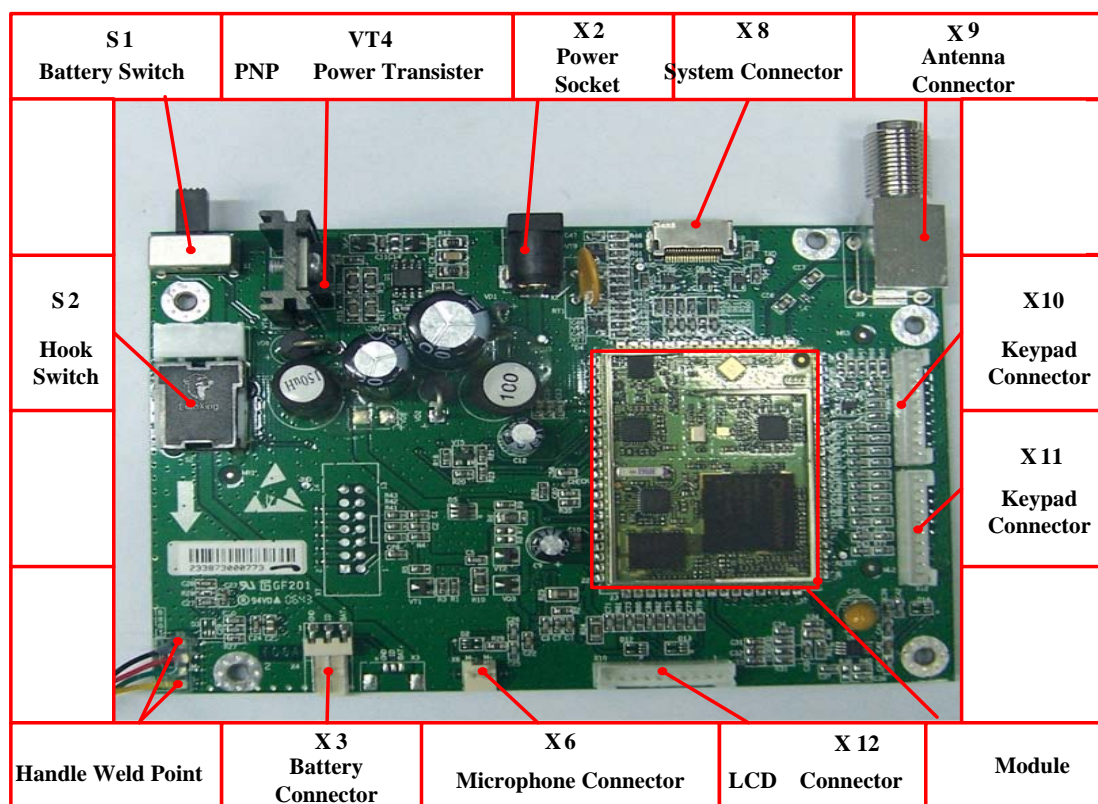
2.4 Components



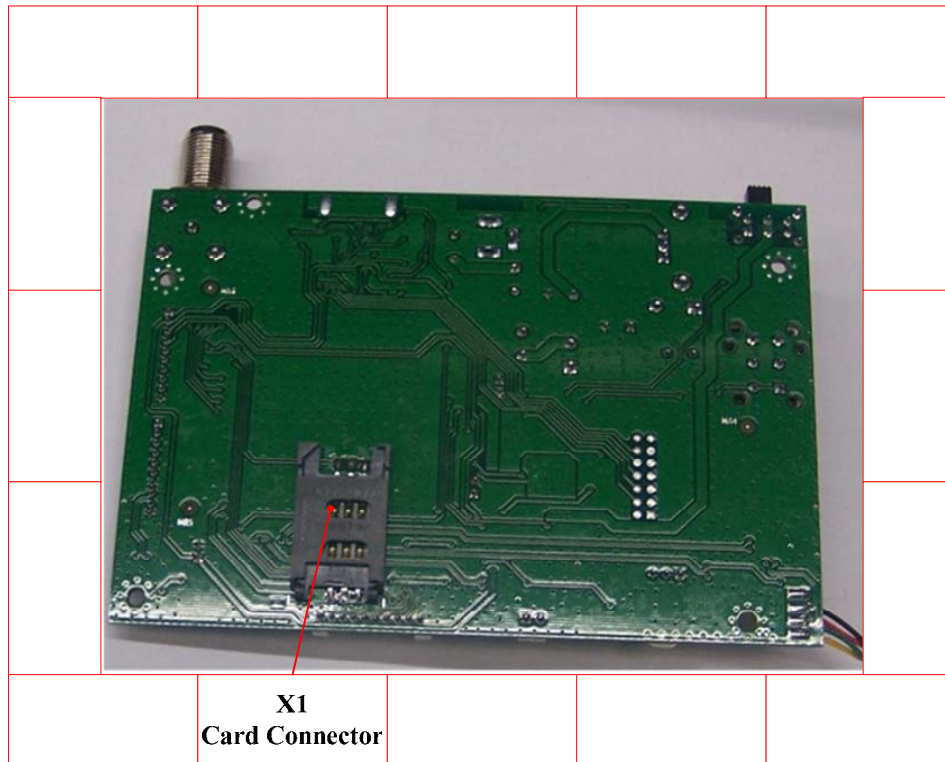
2.5 .Block Diagram for Principle



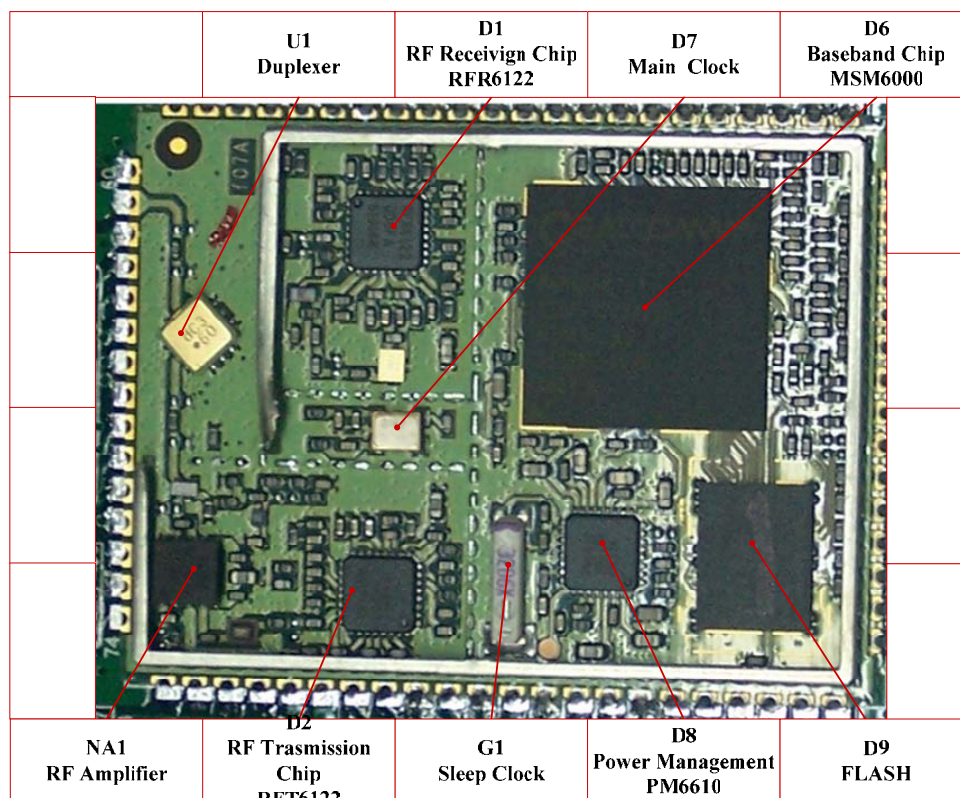
2.6 Basic Device Distributing



MB Top Distributing Picture



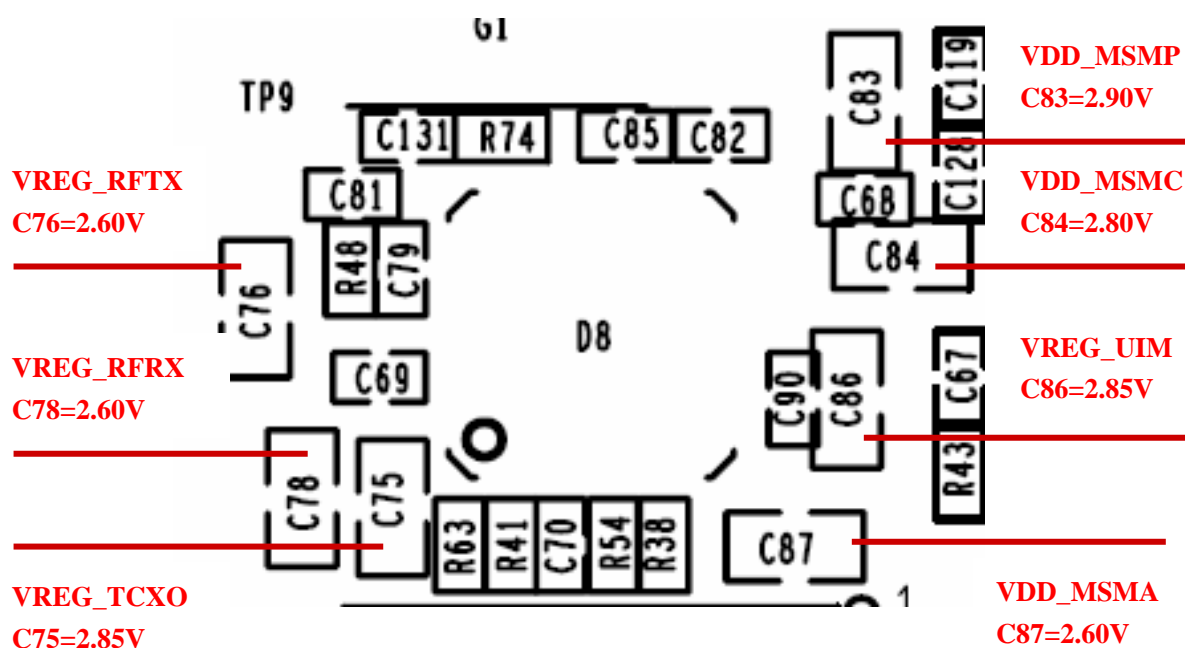
MB Top Distributing Picture



Material Object Picture of RFMB Module

2.7 Main Test Points

Name	Voltage Value	Test Points	Function
VREG_TCXO	2.85V	C75	Providing power supply for TCXO of RF circuit
VREG_UIM	2.85V	C86	Providing power supply for UIM card
VREG_RFTX	2.60V	C76	Providing power supply for RF transmission loop.
VREG_RFRX	2.60V	C78	Providing power supply for receiving front-end of RF
VDD_MSMP	2.90V	C83	Providing power supply for peripheral devices in system
VDD_MSMA	2.60V	C87	Providing power supply for analog circuit of baseband part of system
VDD_MSMC	2.80V	C84	Providing power supply for core of MSM6000

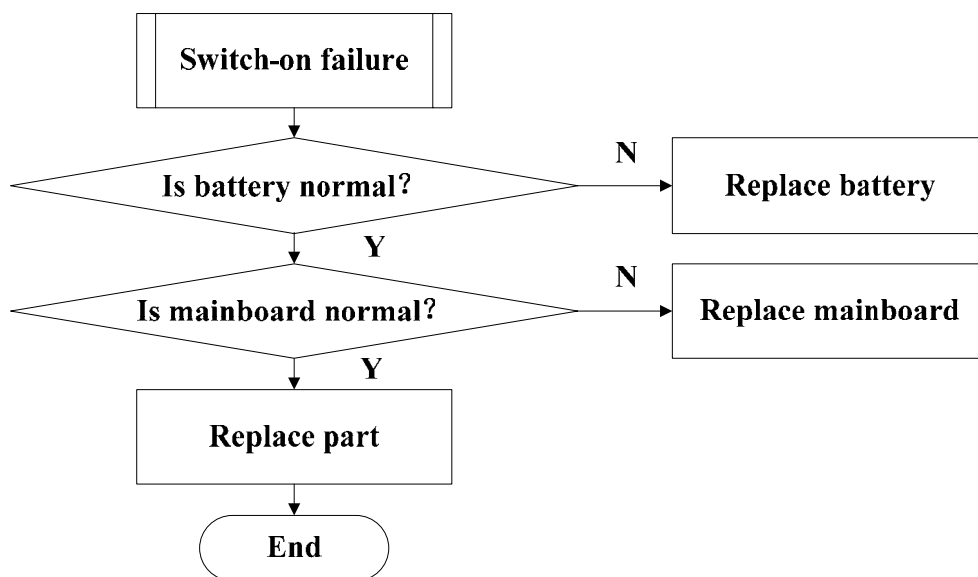


3. Flow Chart of Familiar Troubleshooting (Level 1)

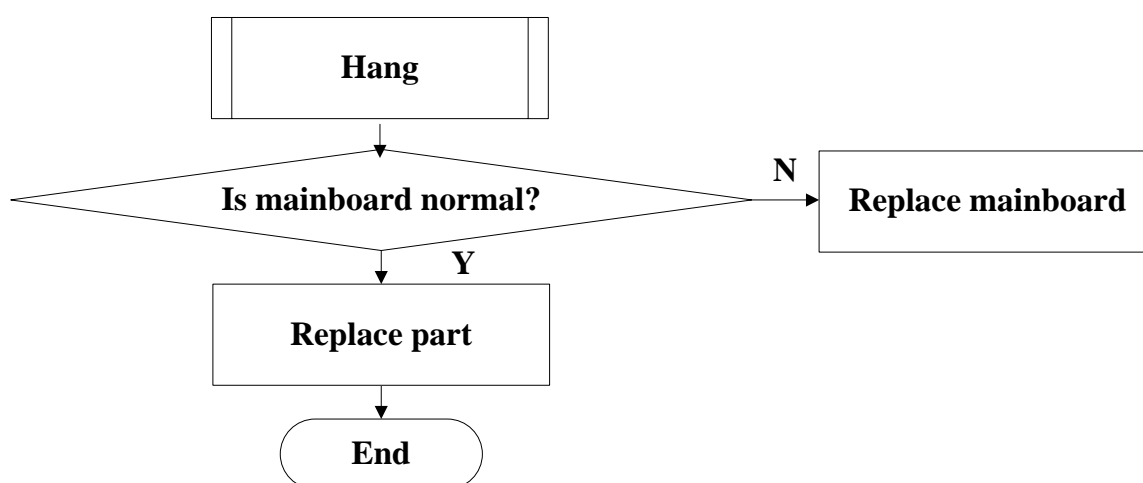
3.1 Components Failure

Please replace the faulty components referring to the disassembling steps.

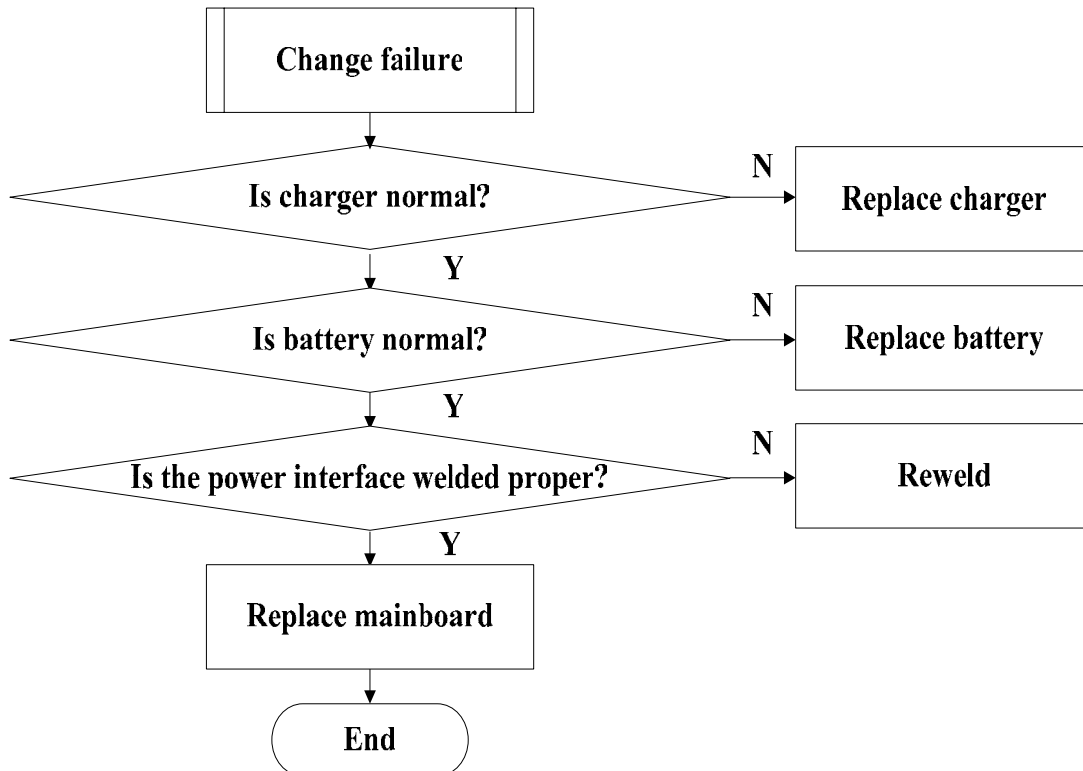
3.2 Switch-on Failure



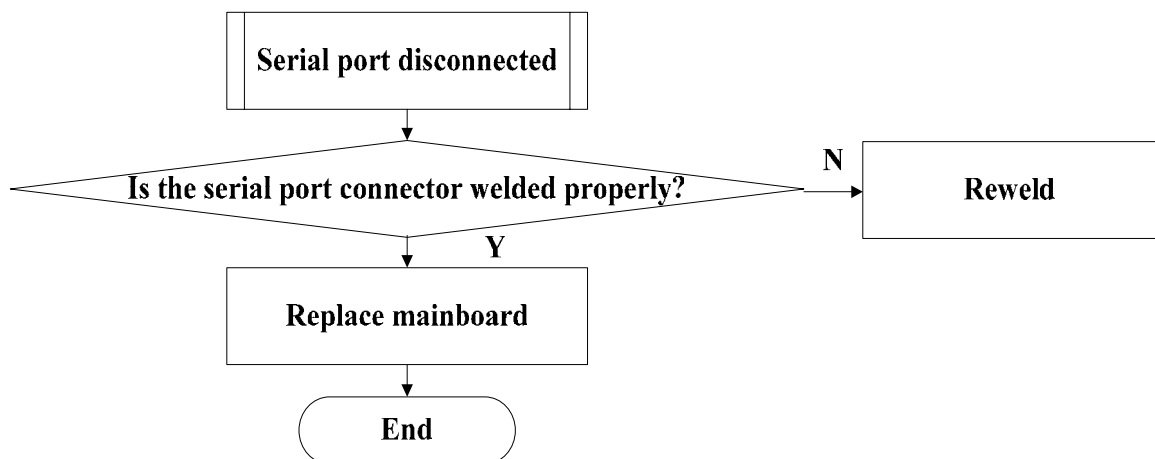
3.3 Hang



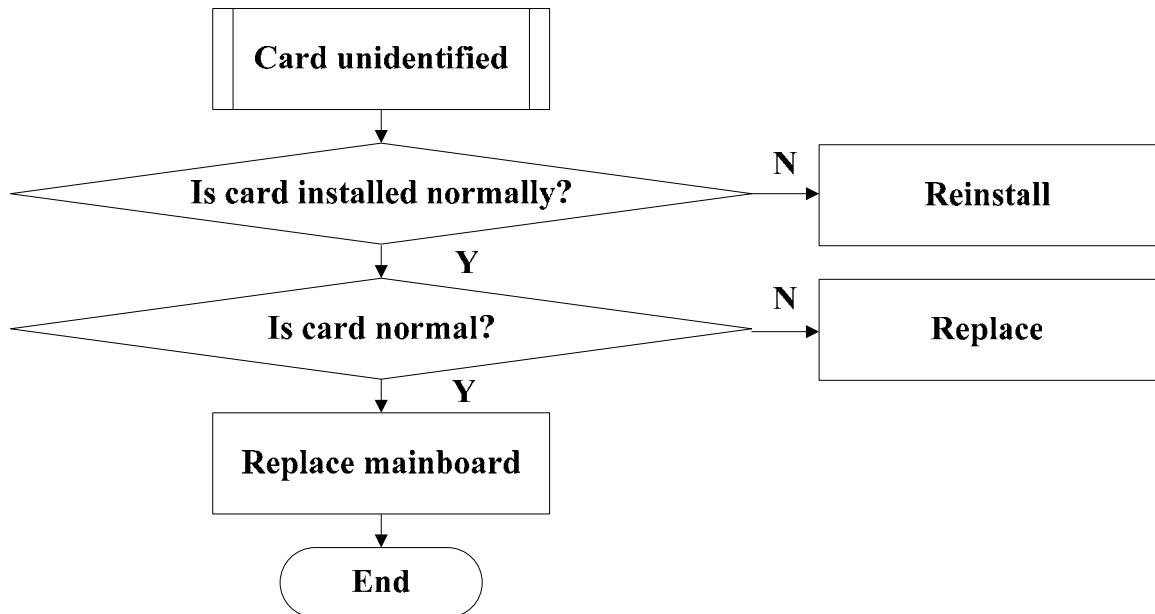
3.4 Change Failure



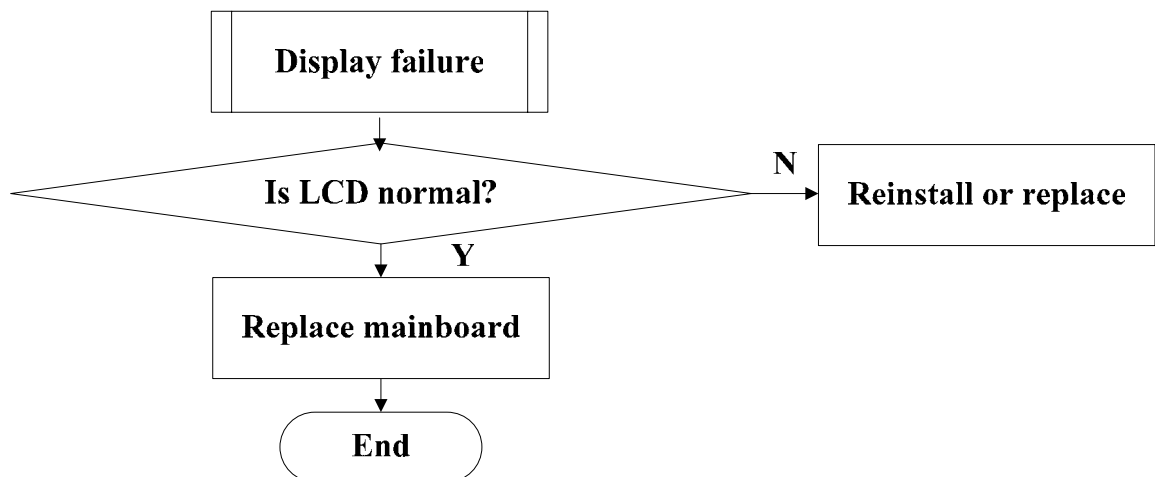
3.5 Serial Port Disconnected



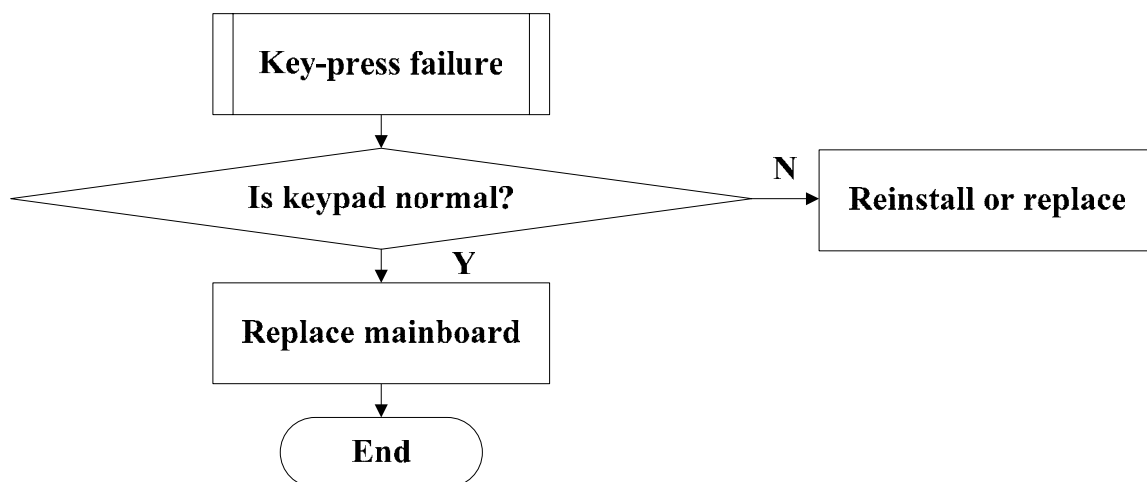
3.6 Card Unidentified



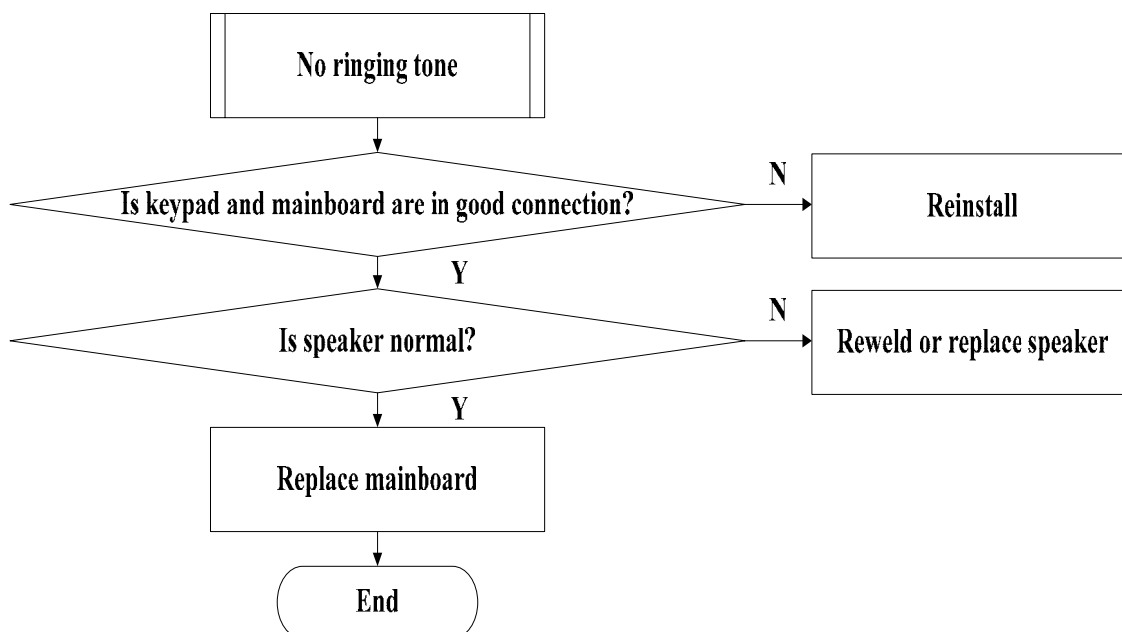
3.7 Display failure



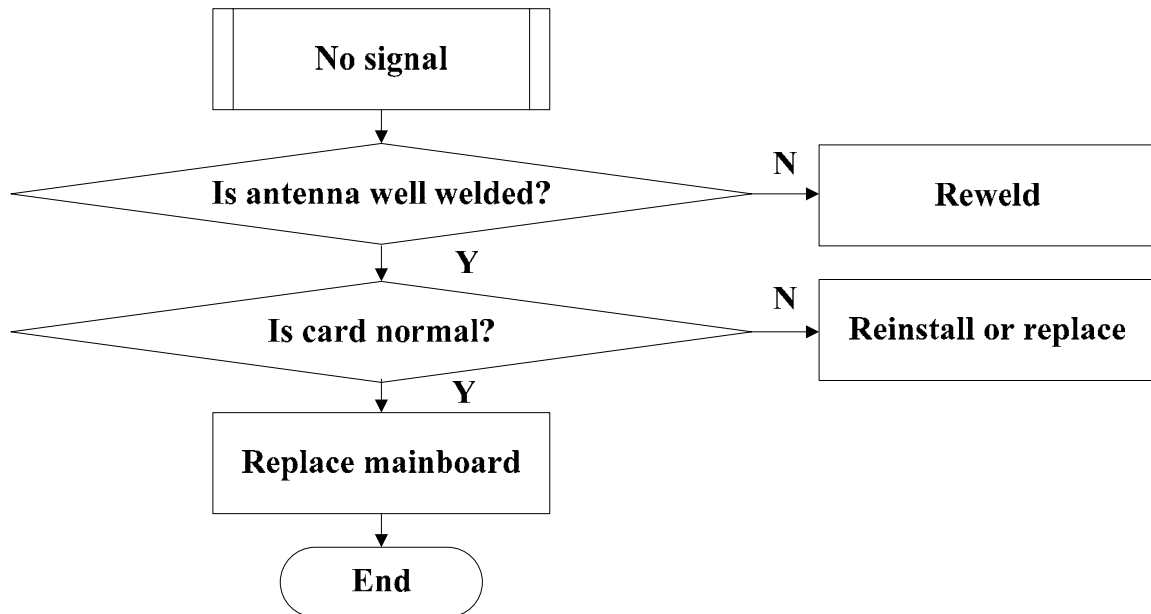
3.8 Key-press failure



3.9 No Ringing Tone

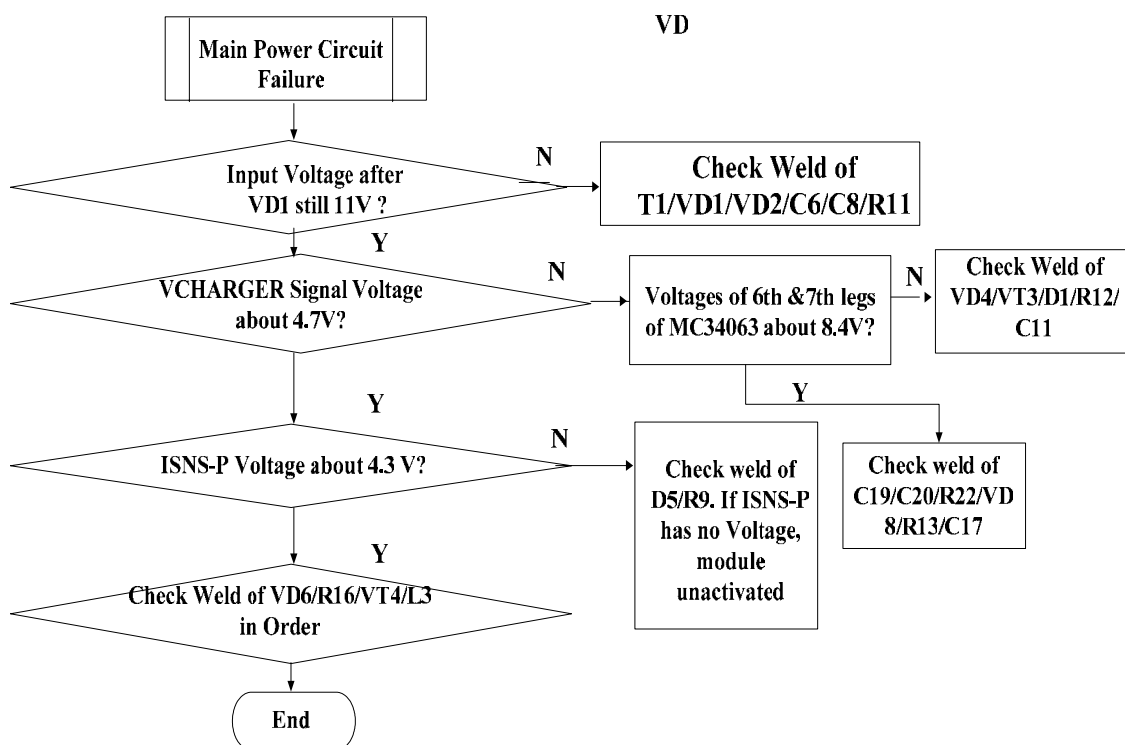


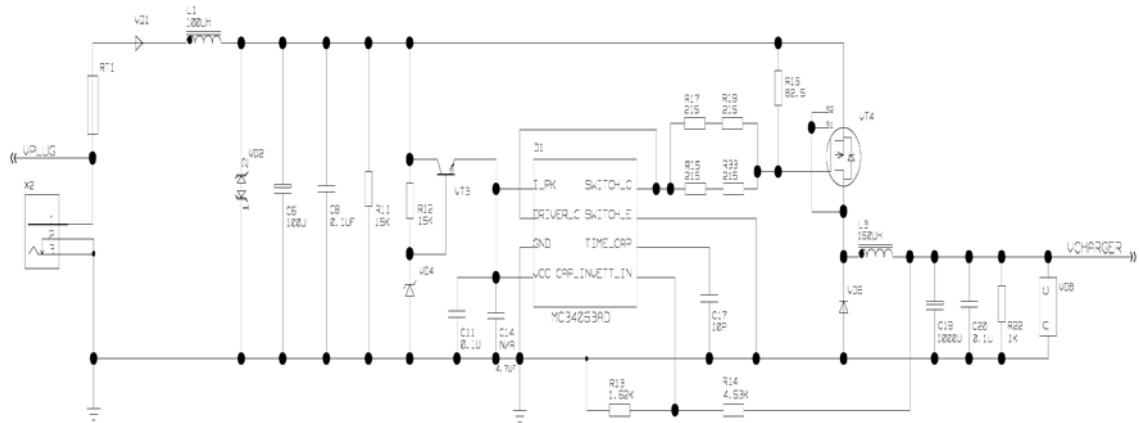
3.10 NO Signal



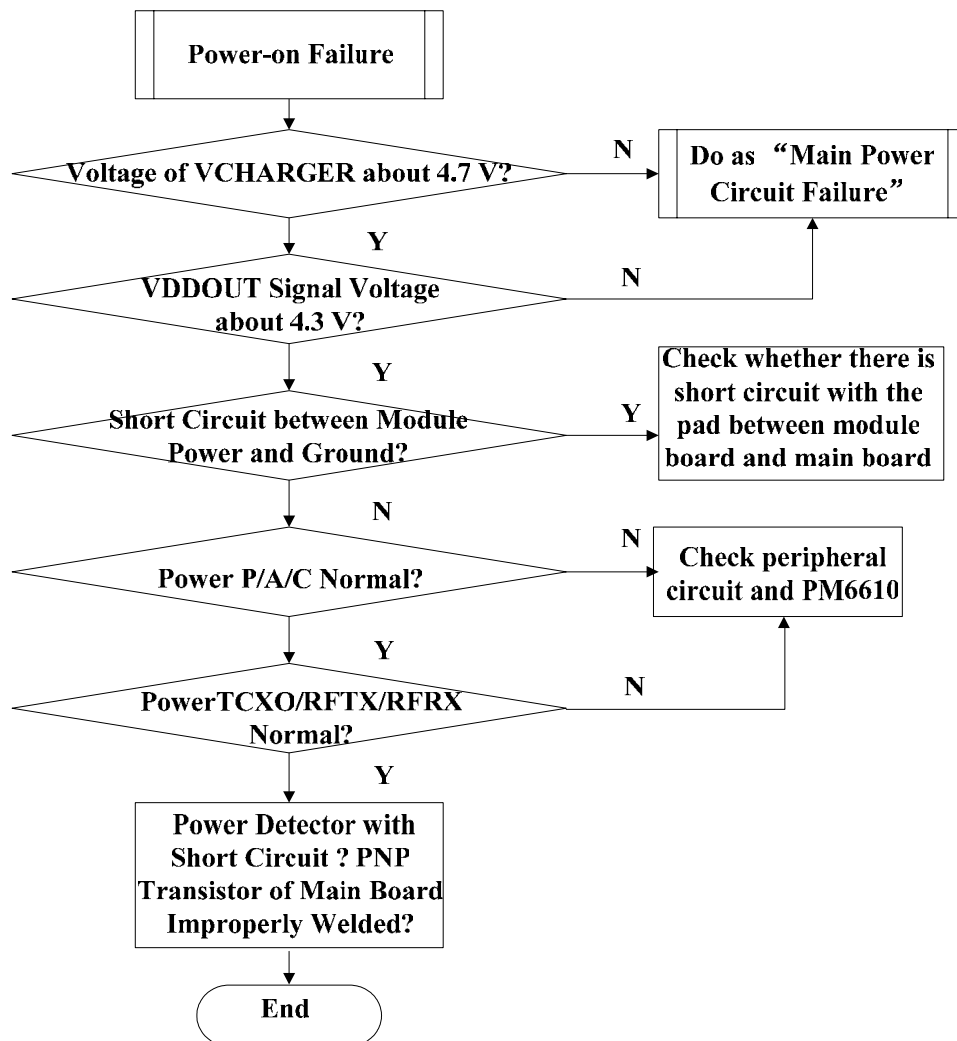
4. Flow Chart of Familiar Troubleshooting (Level 2)

4.1. Main Power Circuit Failure

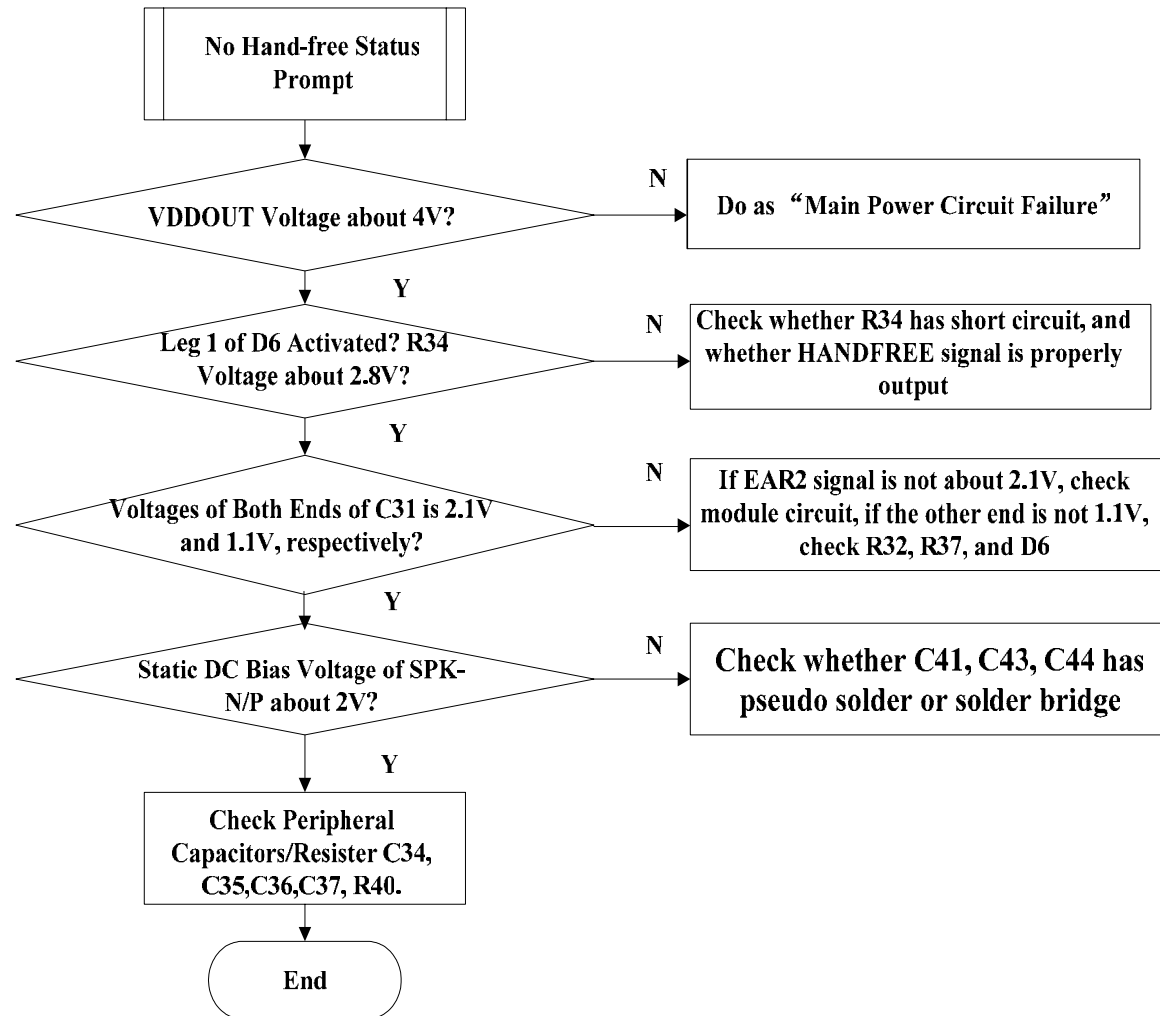




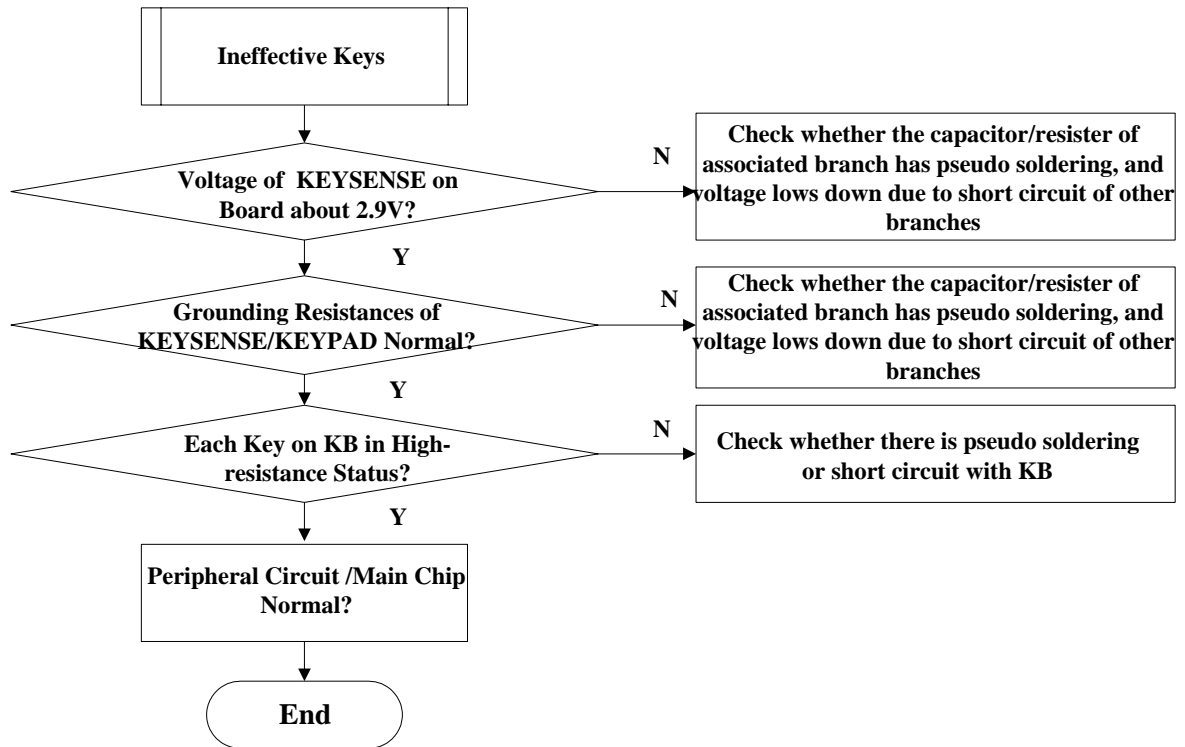
4.2. Power-on Failure



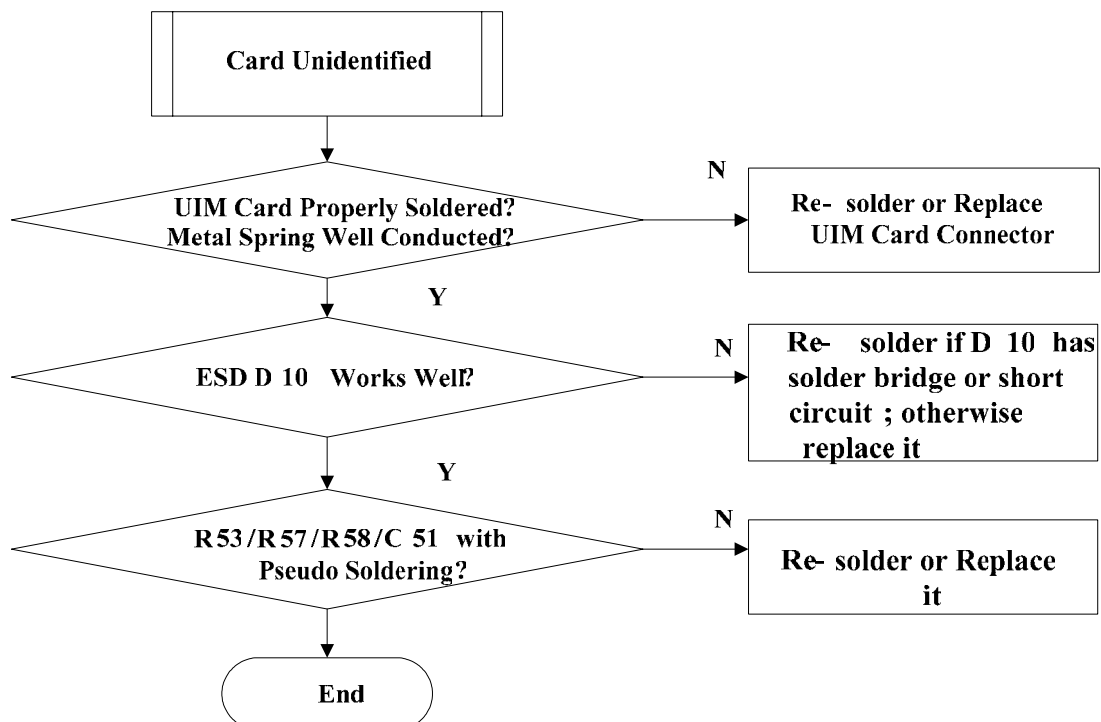
4.3. No Hand-free Status Prompt



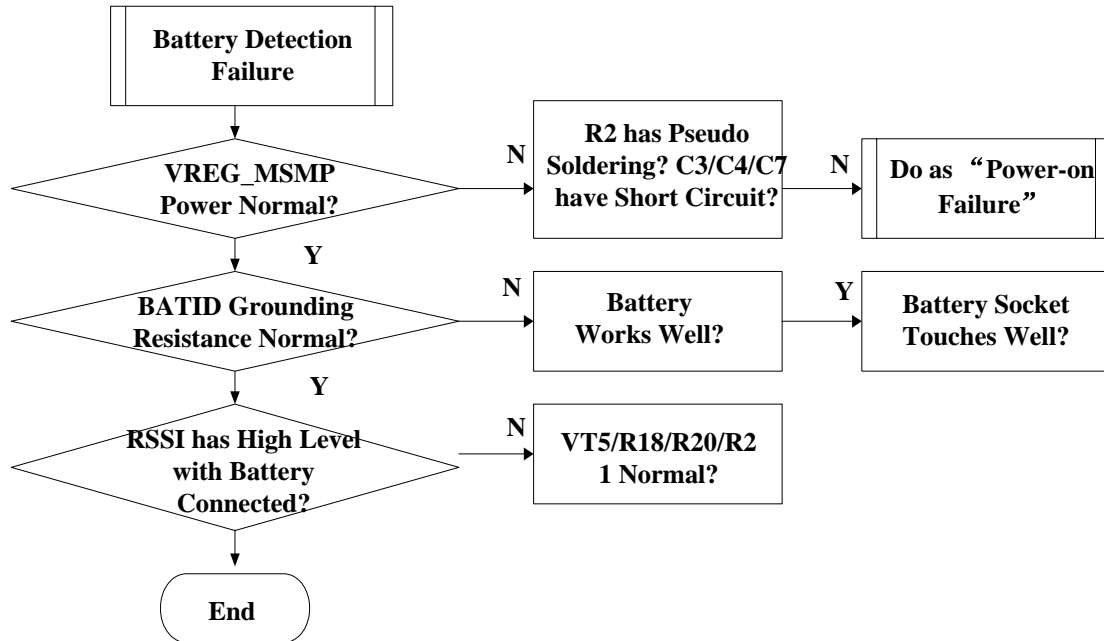
4.4. Ineffective Keys



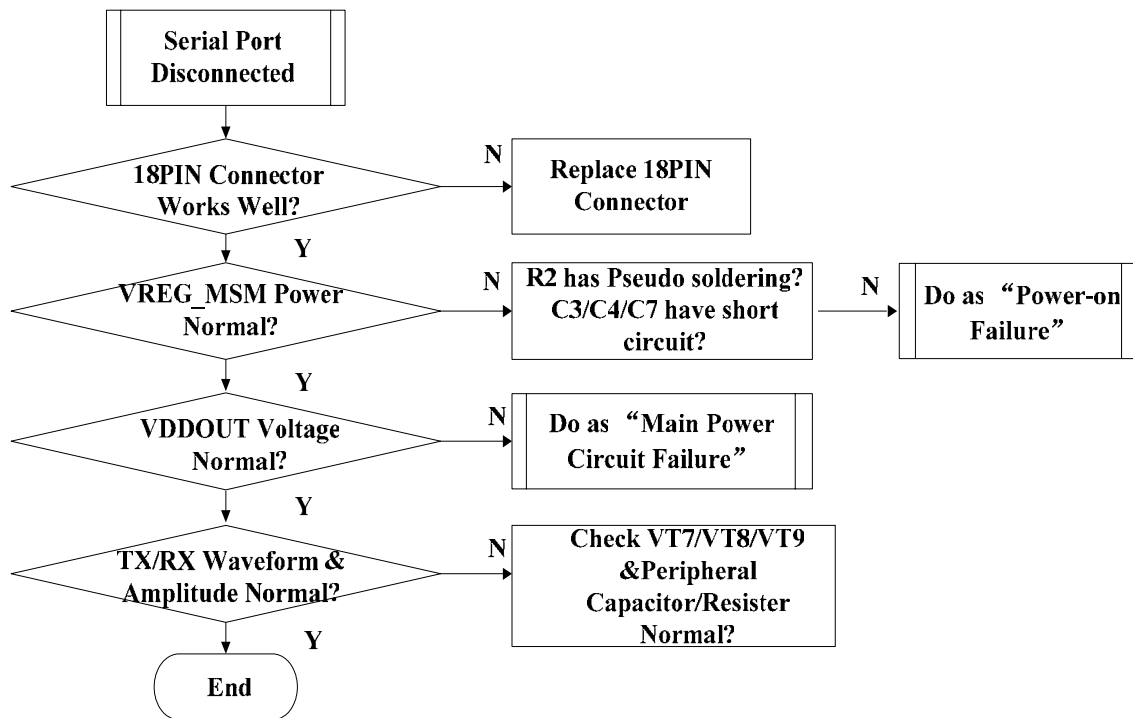
4.5. Card Unidentified



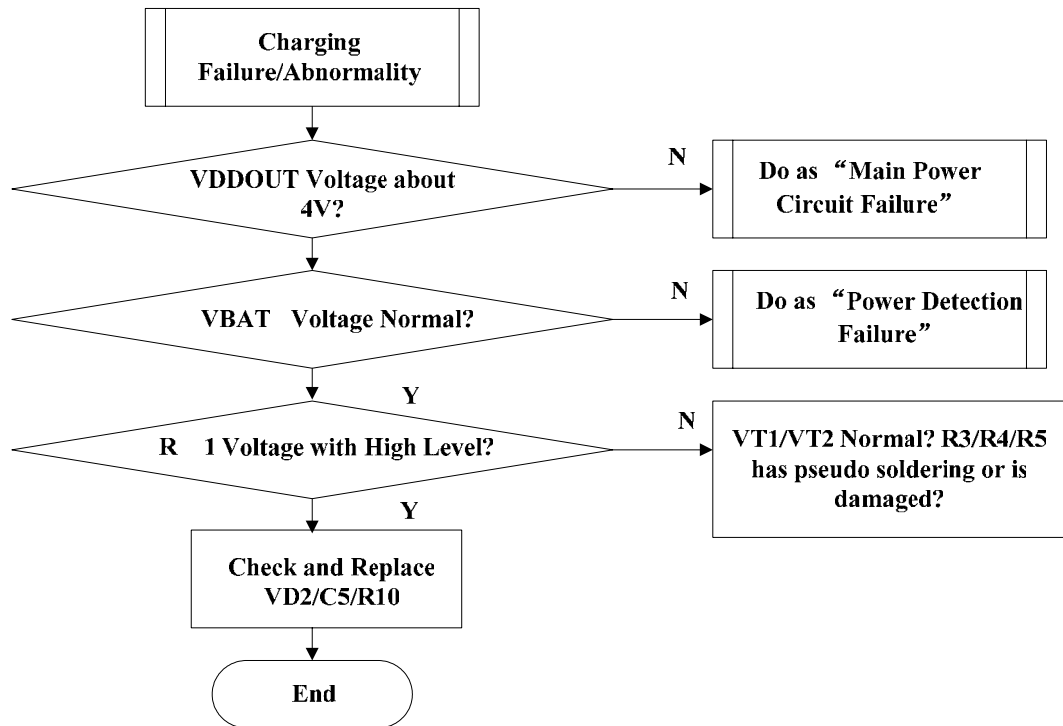
4.6. Battery Detection Failure



4.7. Serial Port Disconnected

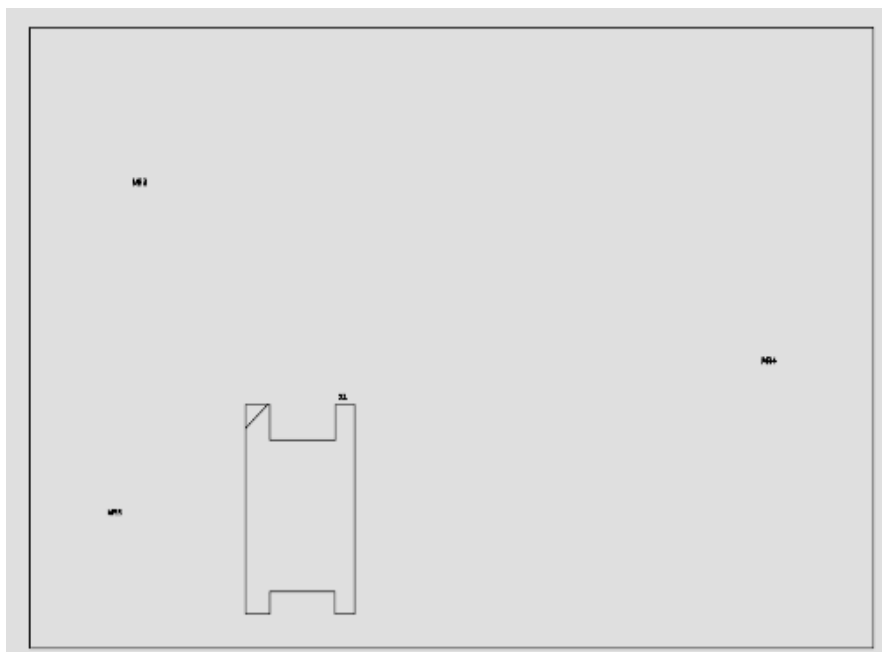


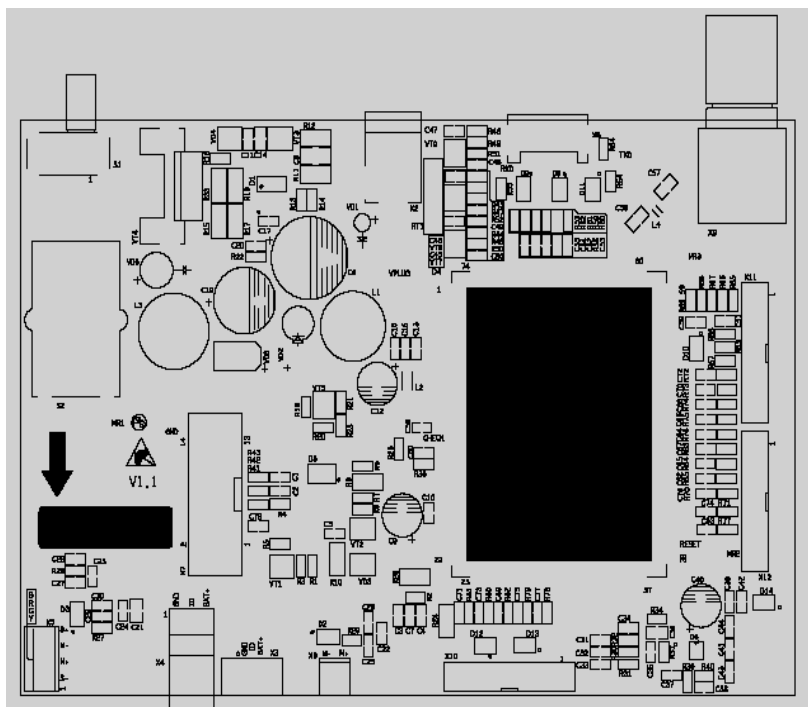
4.8. Charging Failure/Abnormality



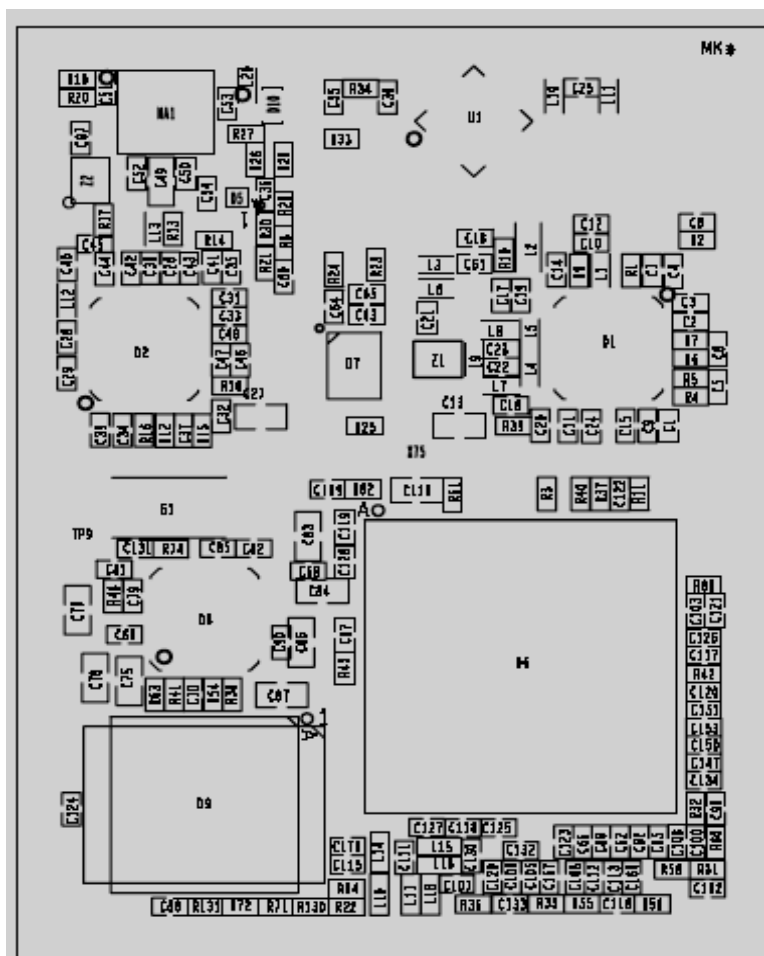
5. Schematic Diagram for Main Board and Module

5.1. Schematic Diagram for Main Board





5.2. Schematic Diagram for Module



6. Part List

6.1 FWP Part List

WP826B CDMA Wireless Access Fixed Station Parts List (Black for Venezuela)		
No.	P/N	Part Name
1	035040100027	Loudspeaker
2	035040300010	Microphone (Video Phone)
3	035040400007	Receiver (Video Phone)
4	035030100119	WP806 LCD Module
5	055401001291	WP806A Upper Cover (Black)
6	050603400002	Fixed Station 1800mAh Ni Battery (Customized by Venezuela)
7	055401100031	WP826B SIM Card Cover (Black)
8	055401100030	WP826B Battery Cover (Black)
9	055401100029	WP826B Bottom Cover(Black Outboard)
10	055401001301	WP806A Digital Key

6.2 MB Part List

WP826B CDMA Wireless Access Fixed Station Board Parts List			
No.	P/N	Part Name	Board Number
1	002010500006	Audio Amplifier	D6
2	003030100037	Switch-mode Power Converter	D1
3	004020100007	Bidirectional Transient Voltage Suppressor	VD2
4	042011900029	TNC Connector	X9
5	042120200005	SIM Card Connector	X1
6	042090100002	470 Power Socket	X2
7	042120300002	System Connector jack (slice pin)	X8
8	044010800007	DP2T type lateral slide switch	S1
9	128542150005D	WP826B RFMB	D4

6.2. Module Part List

WP826B CDMA Wireless Access Fixed Station Module Parts List			
No.	P/N	Part Name	Board Number
1	002030200008	SPDT Analog Switch	VT4
2	006030200043	FLASH	D1
3	012090200039	QUALCOMM Single Chip	D2
4	014010100031	Dual (NPN+ PNP) Digital Transistor	VT2,VT3
5	015010200072	RF Power Amplifier	NA1
6	015020200063	Directional Coupler	D3
7	036010200019	SAW Duplexer	DP1

Notice: This is the main parts list.If you need a detail one please apply it from local after-sales Service manager.