

Document Title: ZTE C336 CDMA 1X After-sales
Service Manual (Level 1)

Total 20 Pages (Cover included)

Approved _____

ZTE CORPORATION

Modification Record

File NO.	Version NO.	Drafted	Data	Modification Reason	Main Modification Content
		Wang Hui	2008-01-26	None	None
<p>Notice: Fill in the table while modify the document; The modification reason and main modification content columns are filled in none during first document making.</p>					

CONTENTS

1. PRODUCT SUMMARY	2
1.1 STANDARD CONFIGURATION	2
1.2 SPECIFICATION	2
1.3 FUNCTIONS	2
1.4 INNER TYPE	3
2. INNER STRUCTURE AND ELEMENTS	3
2.1 FUNCTION TEST	3
2.2 SOFTWARE DOWNLOAD	3
2.3 DISASSEMBLY FLOW	7
2.4 COMPOSING	12
2.5 PRINCIPLE BLOCK DIAGRAM	12
2.6 BASIC DEVICE DISTRIBUTING	13
3. BASIC FLOW CHART OF COMMON TROUBLESHOOTING (LEVEL 1)	13
3.1 STRUCTURE FAILURE	13
3.2 SWITCH-ON FAILURE	14
3.3 HANG	14
3.4 AUTOMATICALLY SWITCH OFF	14
3.5 CHARGE FAILURE	15
3.6 HANDSET OVERHEATED/LARGE POWER CONSUMPTION/SHORT STAND-BY TIME	15
3.7 CARD UNIDENTIFIED	15
3.8 NO TRANSMITTED VOICE	16
3.9 NO RECEIVE VOICE	16
3.10 NO RINGING TONE	16
3.11 VIBRATION FAILURE	17
3.12 KEY FAILURE	17
3.13 KEYPAD LED FAILURE	17
3.14 NO SIGNAL	17
3.15 NO CALLS OUT	18
4. COMPLETE INSTALLATION BOM	18

1. Product Summary

1.1 Standard Configuration

NO.	Name	QTY
1	Handset	1
2	Battery	1
3	Charger	1
4	User Manual	1

1.2 Specification

Network: CDMA

Frequency Range: TX 824~849MHz; RX 869~894MHz

Dimension: 104*46*12.8mm

Weight: 70g (battery included)

LCD: CSTN, 65K colors, 128*128 dots

Memory: 64Mbit Flash, 16Mbit SRAM

Battery capacity: 670mAh

Stand-by time: >160 hrs

Talk time: >160 minutes



1.3 Functions

Phone book: 500 pieces

Ringtone: 32 polyphone tones; 20 ring tones for incoming call, 6 ring tones for short message

Memorize the latest 40 out call number

Memorize the latest 40 incoming call number

Memorize the latest 40 missed call number

Support language: Chinese/English

Short message: 100 for inbox/out box

Other: calculator, game, alarm clock, stopwatch



1.4 Inner Type

Inner type	Outer type
ZTEC336	C336

2. Inner Structure and Elements

2.1 Function Test

ESN test code: *#06#

Version test code: *983*837#

Function test code: *983*0#

- ◆ Input '*983*0#' to test LCD →ringing tone →vibrator →keypad → audio loop →earphone

Main test items

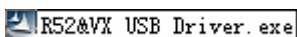
- ◆ LCD test: check whether there is any display defect such as line defect, point defect or askew display.
- ◆ Ringing tone test: check whether there is any abnormal cacophony.
- ◆ Vibrator test: check whether the vibration is even.
- ◆ Keypad test: see whether concerning letters or words could be input with even pressing strength and whether the keys are with enough springiness and fine handle. (press the 'End' key finally)
- ◆ Audio loop test: blow to the microphone, and the speaker sends out rustles, but no other noise.
- ◆ Earphone test: Plug in the headset, blow to the microphone, and the speaker sends out rustles, but no other noise.

2.2 Software Download

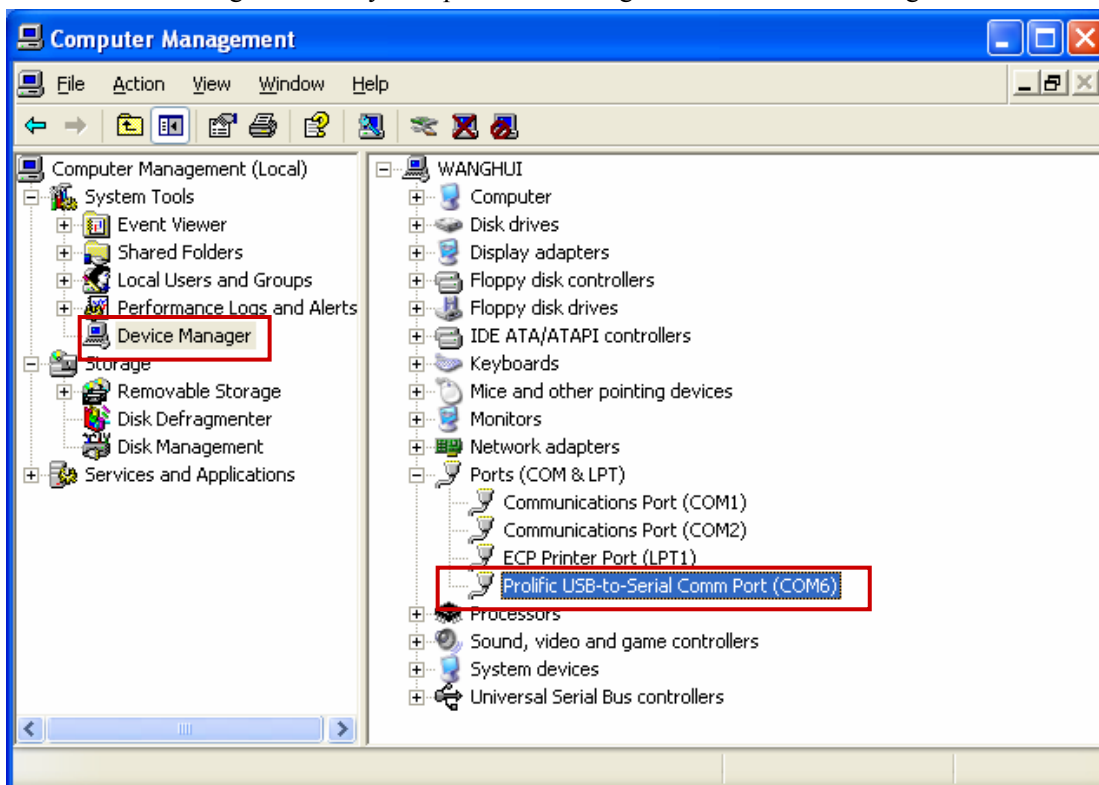
- ◆ Software download instruction
Each handset to be repaired should be upgraded to the latest version, that is, each repaired handset should be in the latest version
- ◆ Download data cable
C350/C310 download data cable (code: ISO13032)



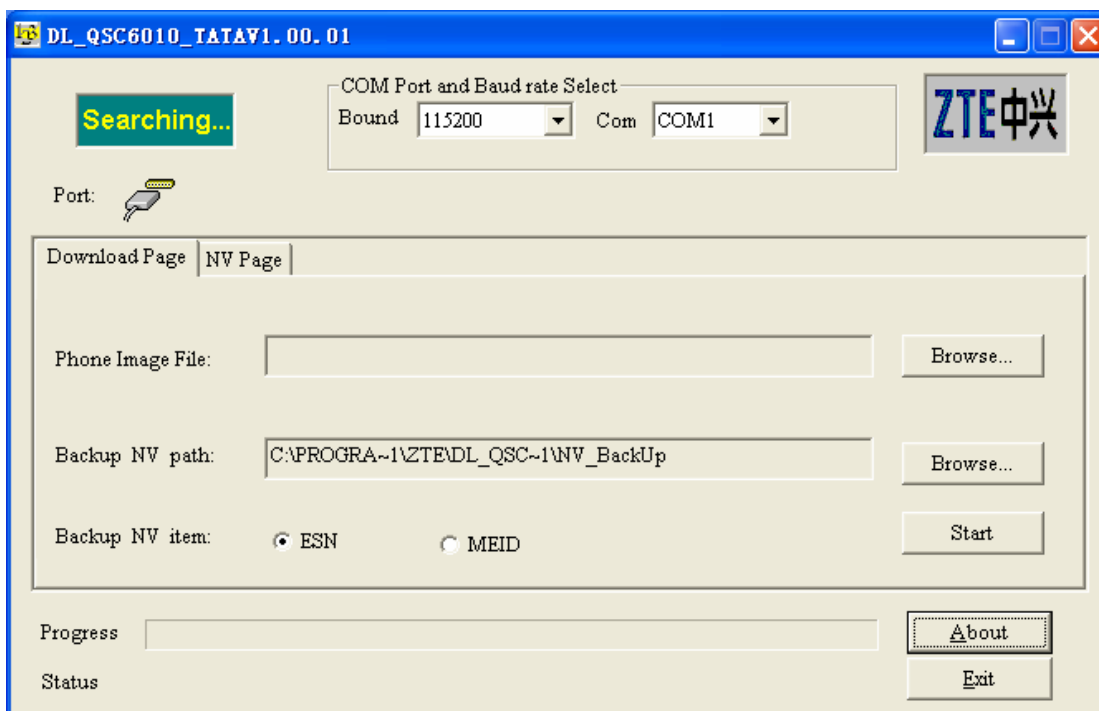
- ◆ Data cable driver
R52&VX USB driver



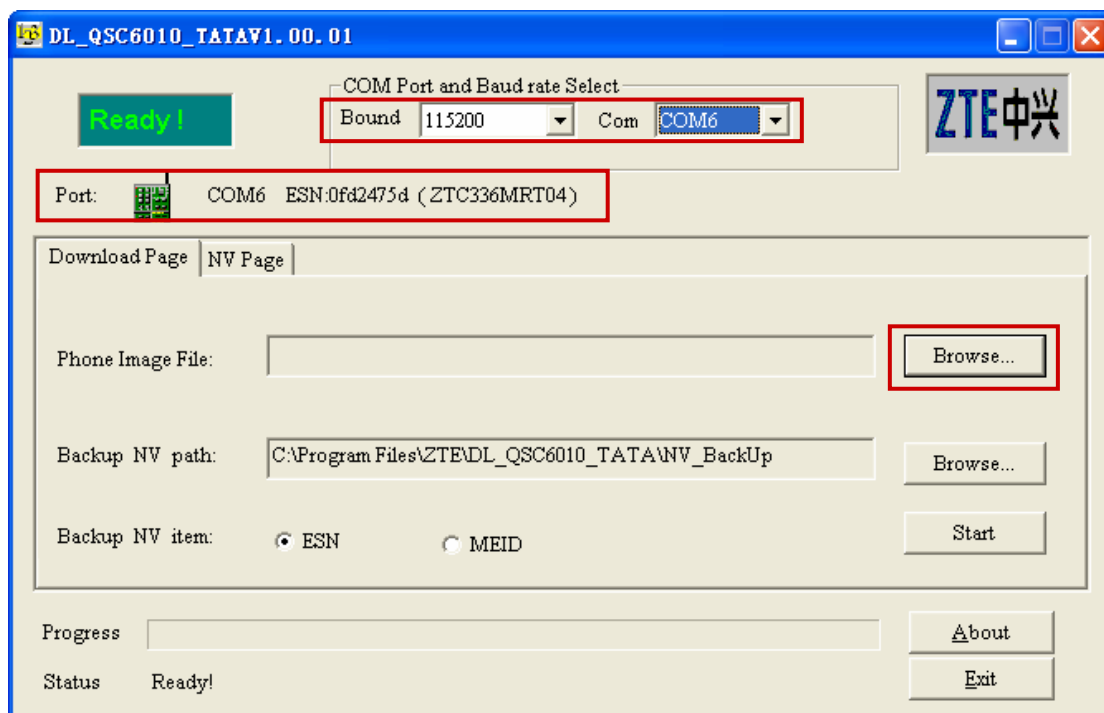
- ◆ After install the data cable driver, connect PC with data cable, enter 'Device Manager' to check the serial port
- ◆ Check route: right click 'My Computer'→ 'Management'→ 'Device Manager'→ 'Ports'



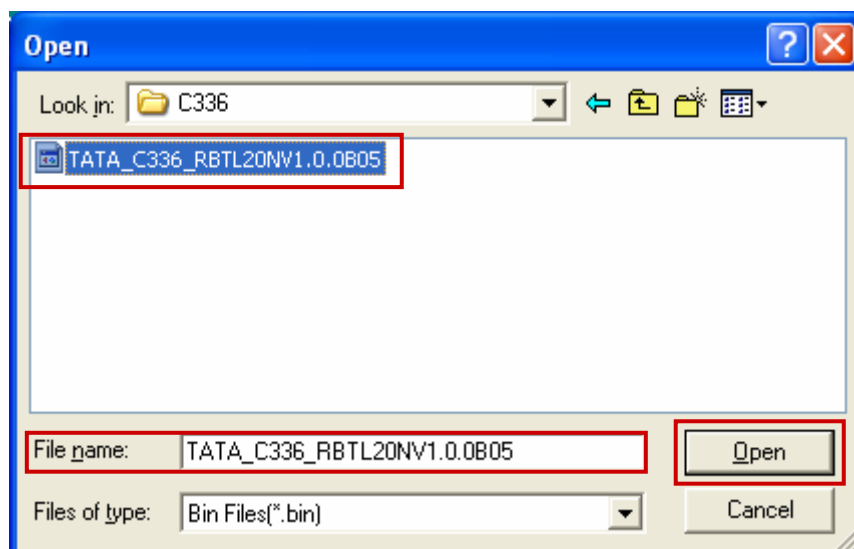
- ◆ Install the download platform: DL_QSC6010_TATAV1.00.01setup
- ◆ After install download platform, double click shortcut icon
- ◆ Main interface



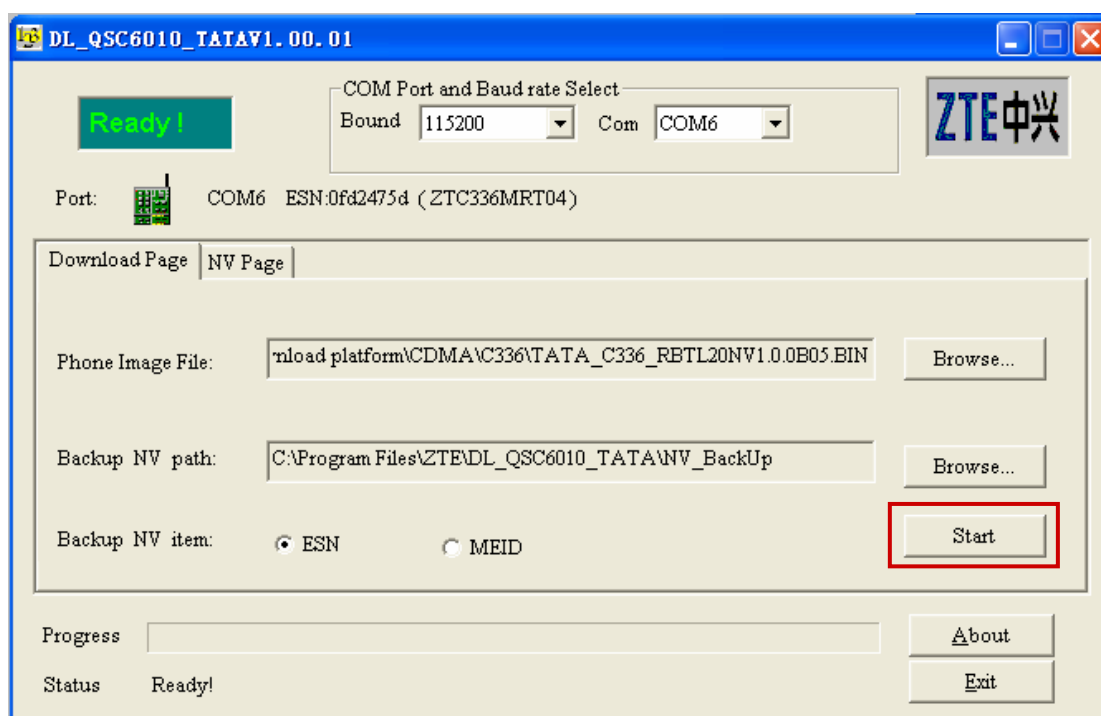
- ◆ Select 'Bound115200'
- ◆ Select correct serial port; connect handset with data cable, then the platform will automatically read out the software version information of handset
- ◆ Click 'Browse'



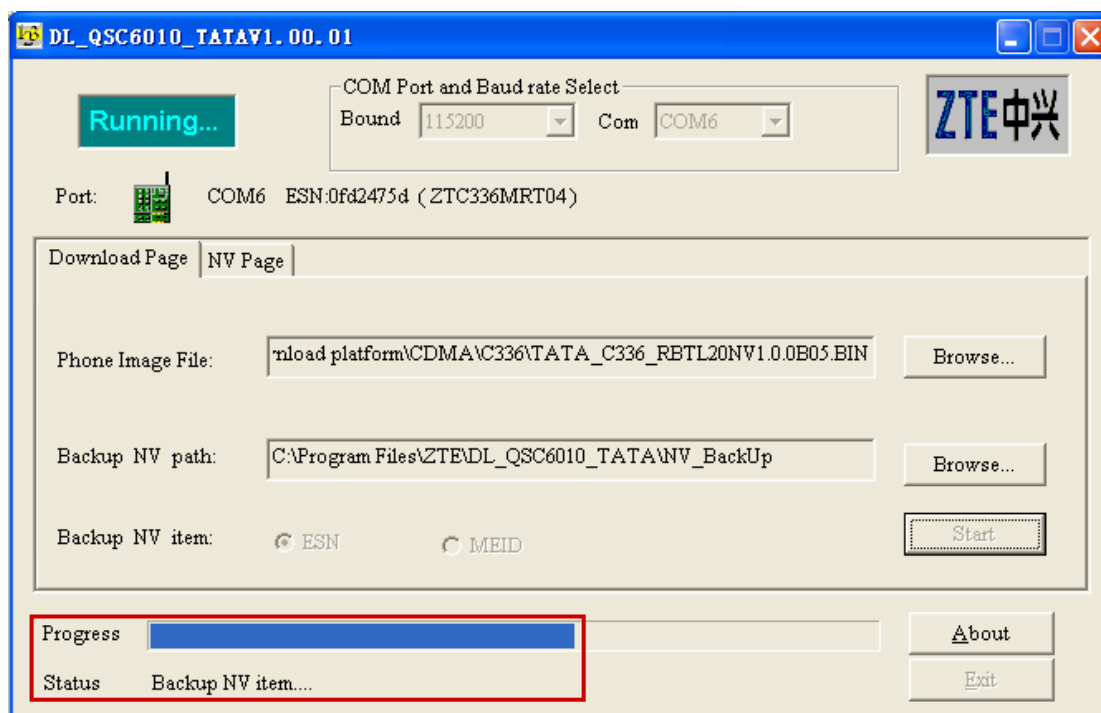
- ◆ Select '*.bin file type → select right version → click 'open'



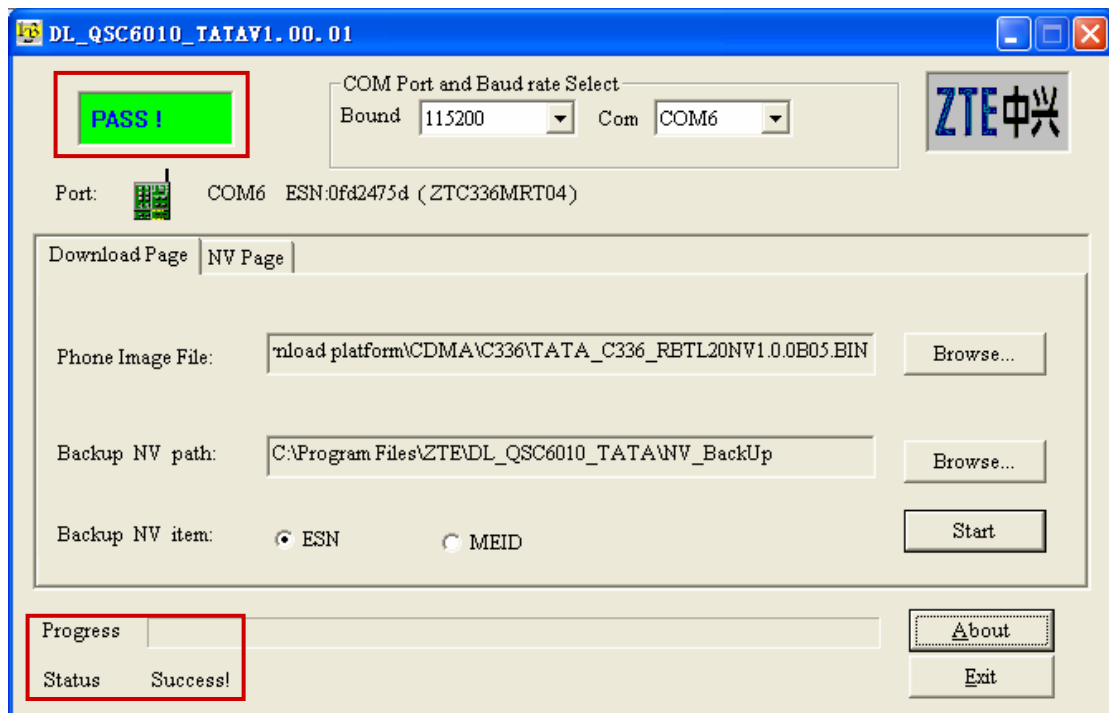
- ◆ Click 'Start' and begin to download



- ◆ Downloading

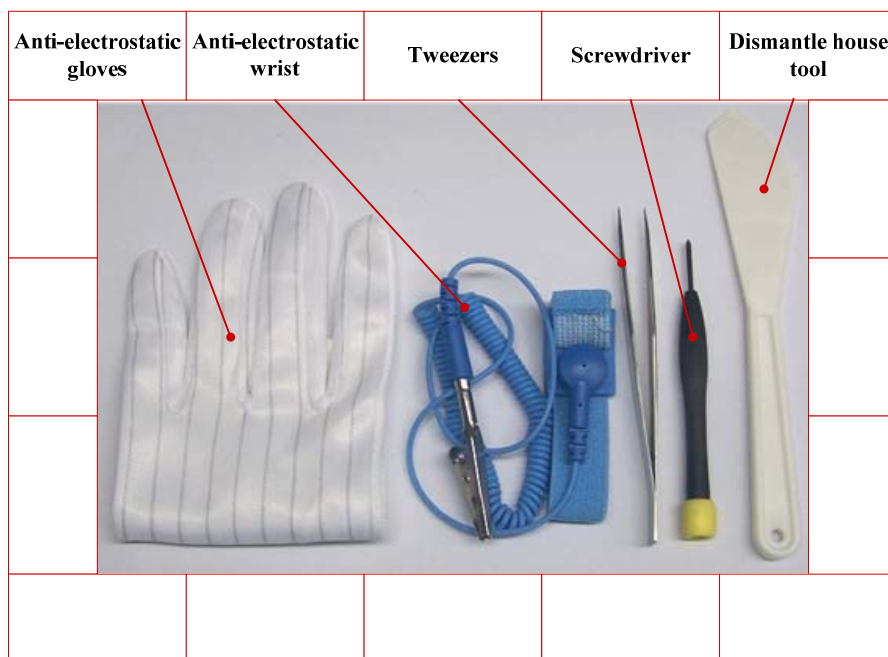


- ◆ Download successfully



2.3 Disassembly Flow

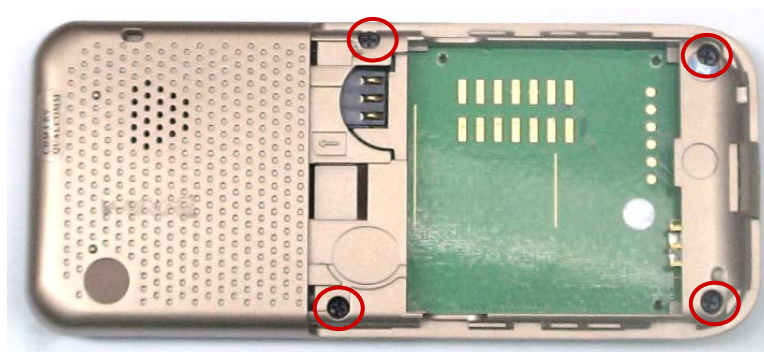
- ◆ Tools



- ◆ Take out the battery



- ◆ Positions of the four screws



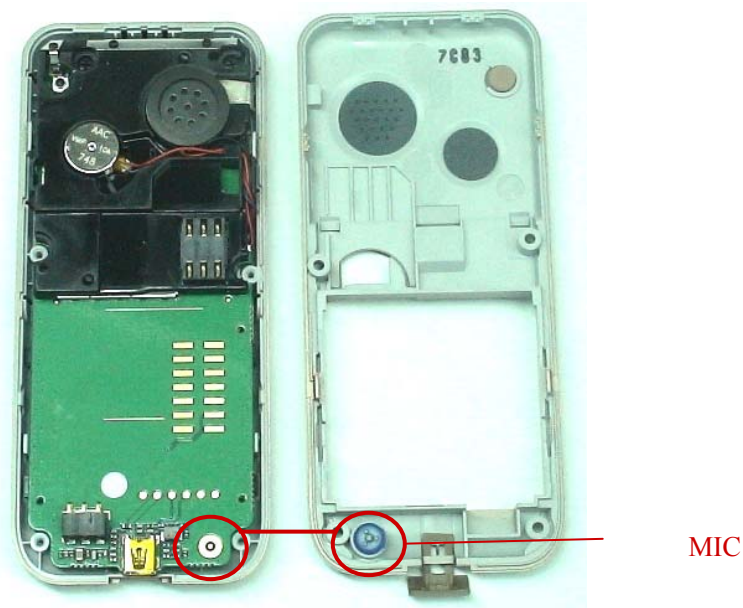
- ◆ Separate the front/back covers with dismantle house tool



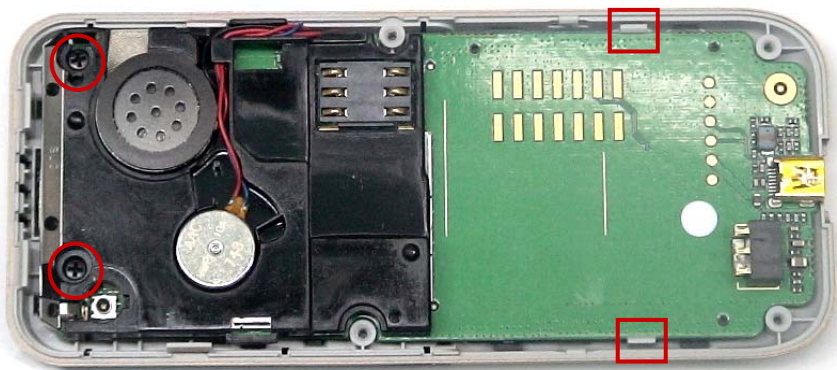
- ◆ Pay attention to the locks



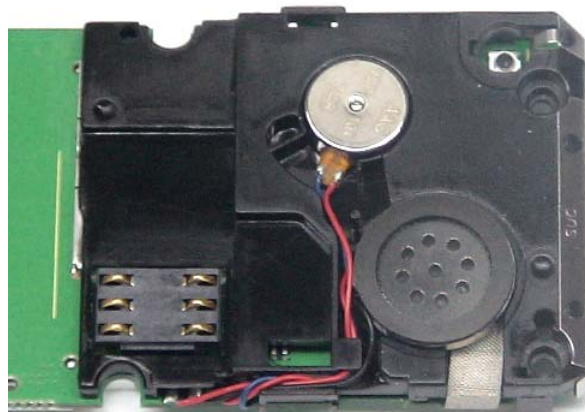
- ◆ The separated front/back covers (make sure MIC is well connected with the connector)



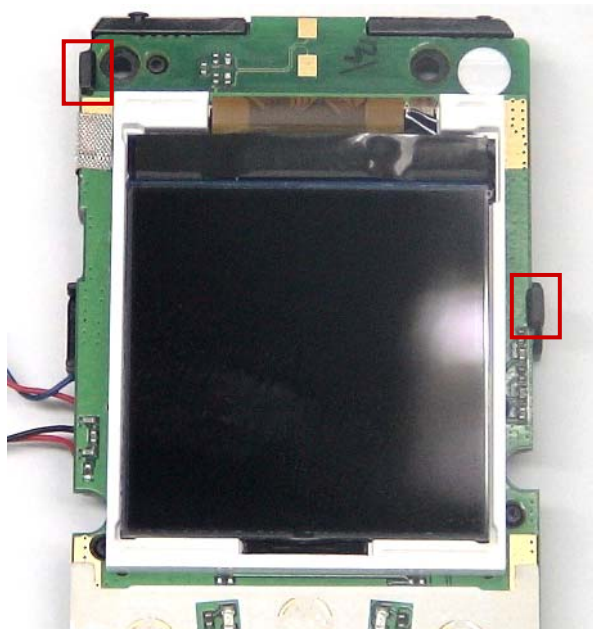
- ◆ Take out the two screws with screwdriver
- ◆ When separate the main board and the front cover, loosen the two locks



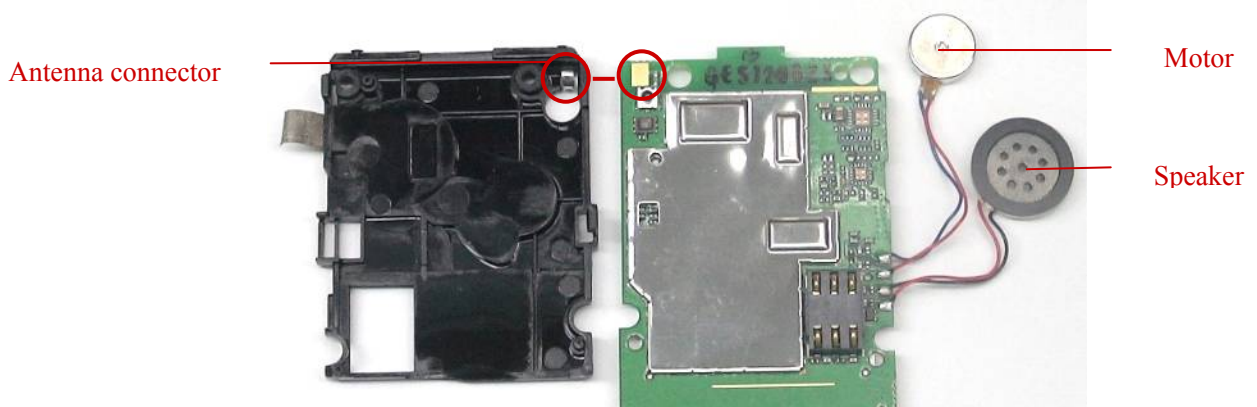
- ◆ Pay attention to the right installation positions of motor/speaker



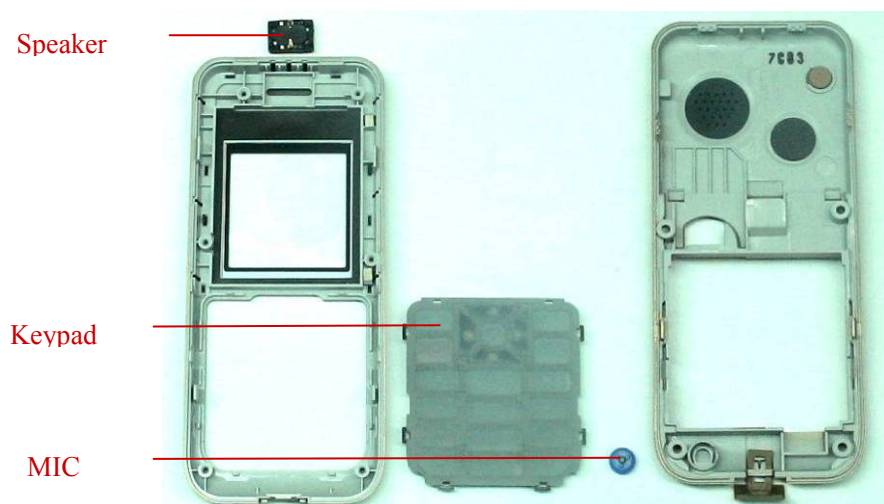
- ◆ When separate the main board and the inner antenna, loosen the two locks first



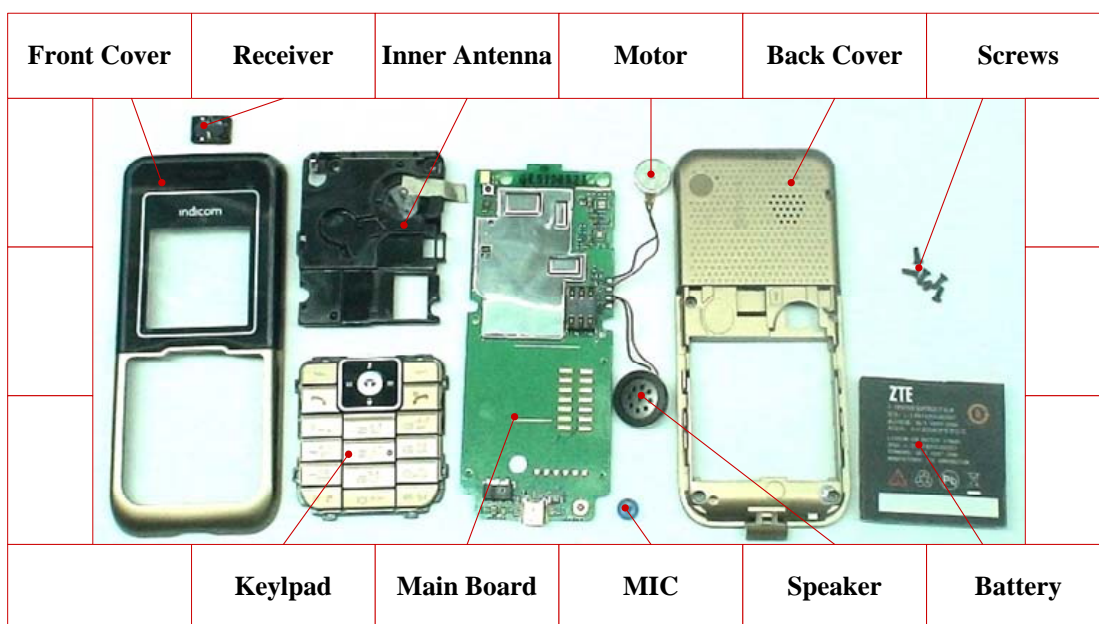
- ◆ The separated inner antenna/main board
- ◆ Pay attention to the welding positions of the motor and the speaker



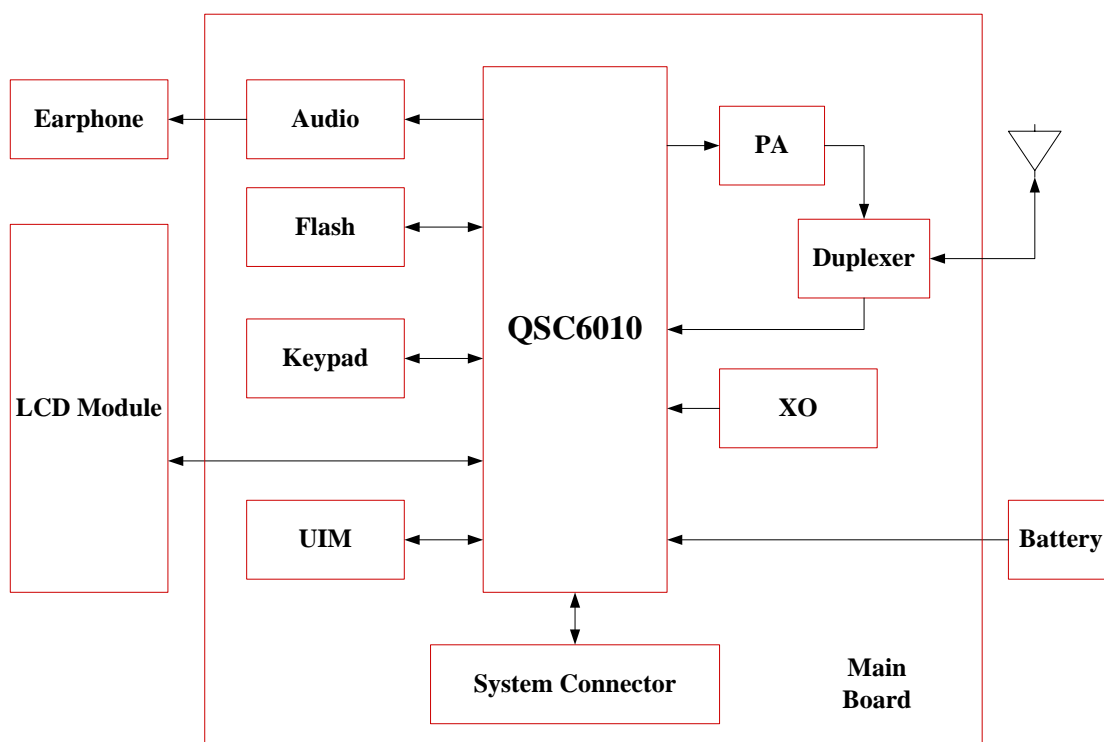
- ◆ The components of separated front/back covers



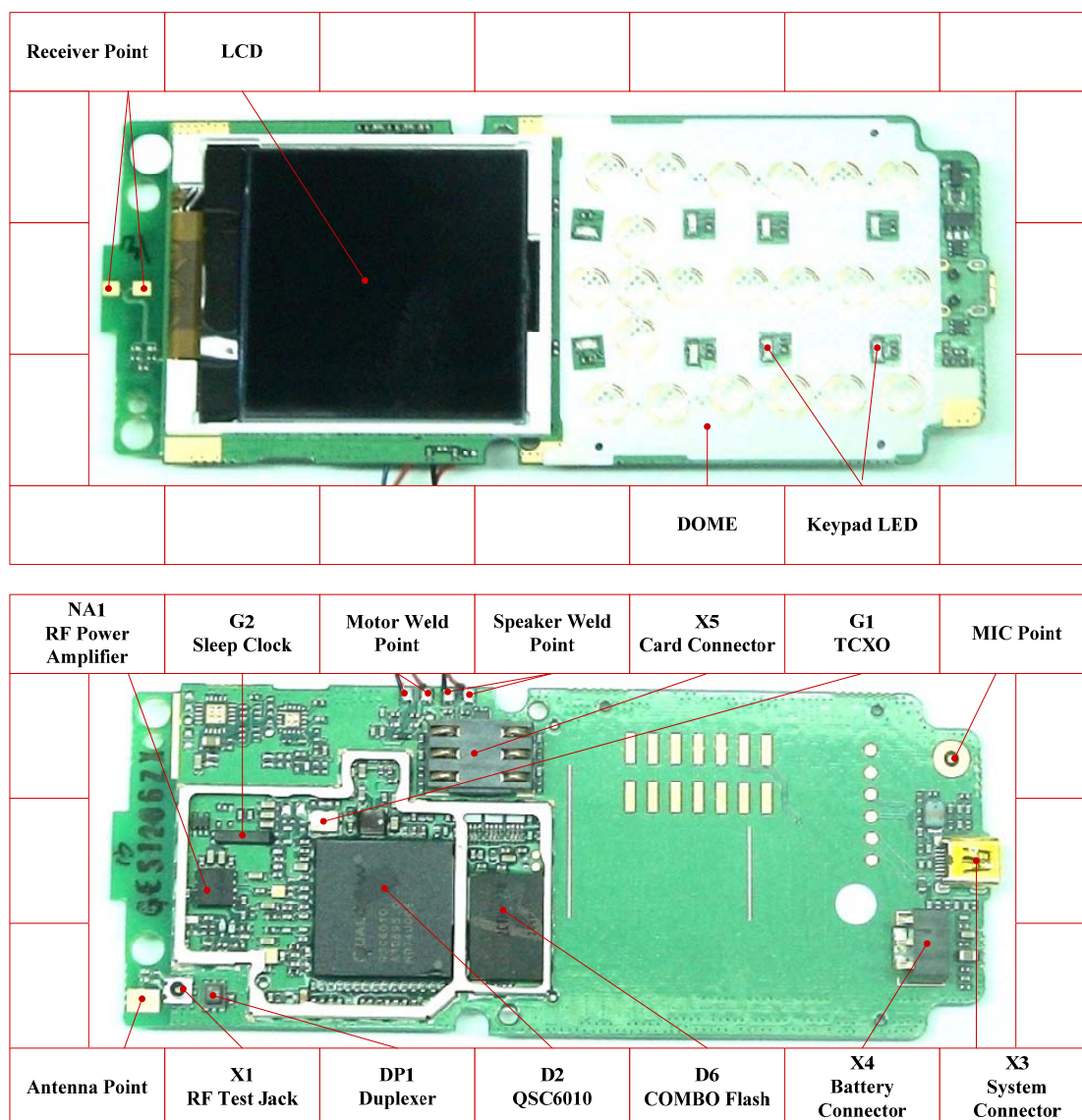
2.4 Composing



2.5 Principle Block Diagram



2.6 Basic Device Distributing

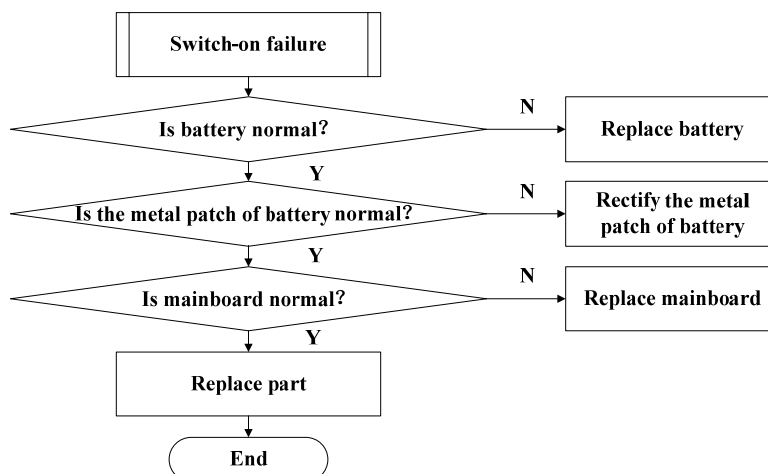


3. Basic Flow Chart of Common Troubleshooting (Level 1)

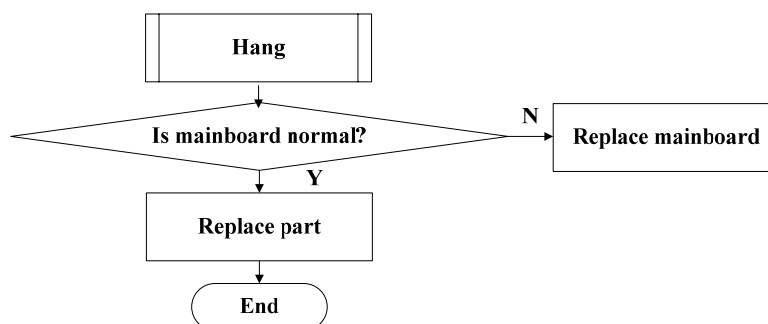
3.1 Structure Failure

For the structure failure, please make sure the corresponding replacement (refer to section disassembly flow).

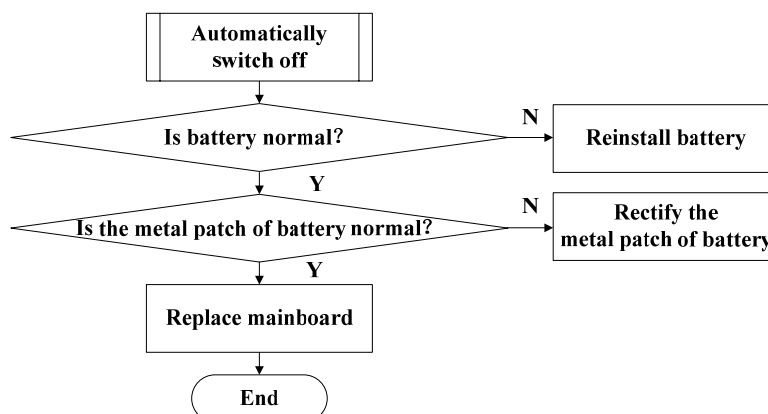
3.2 Switch-on Failure



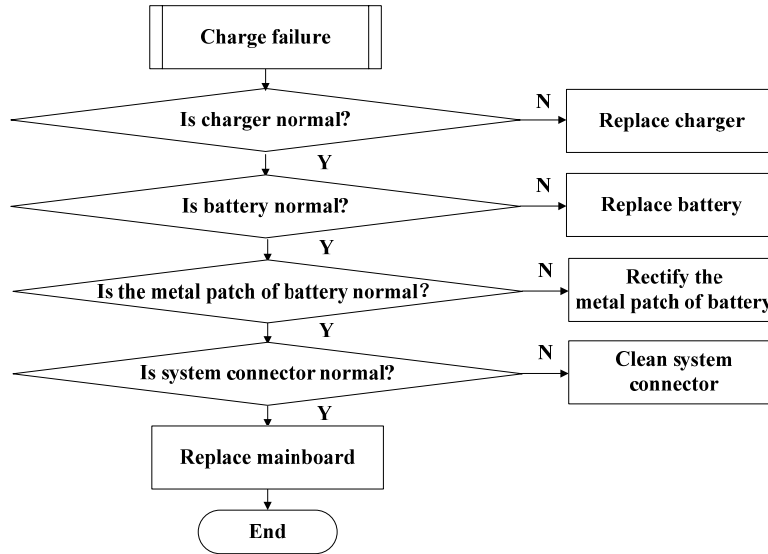
3.3 Hang



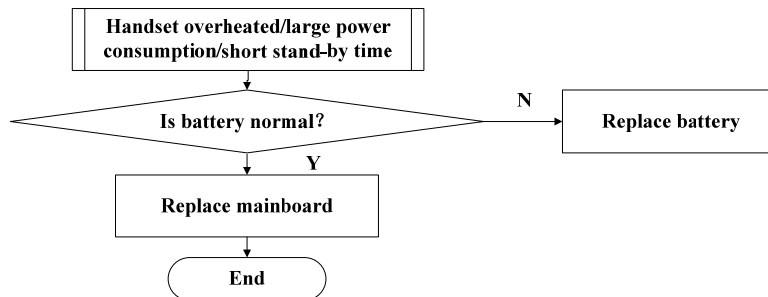
3.4 Automatically Switch off



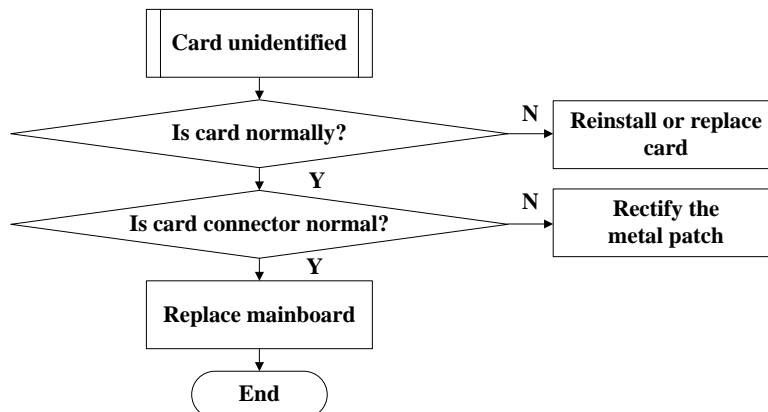
3.5 Charge Failure



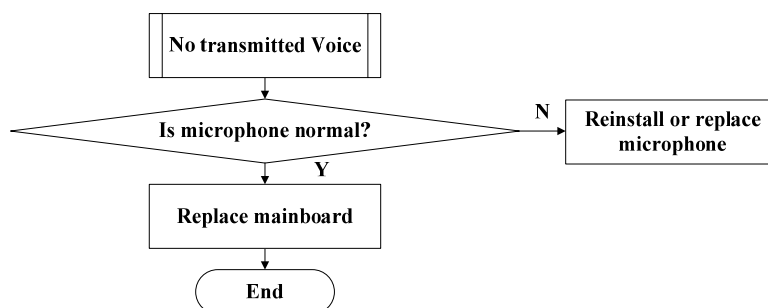
3.6 Handset Overheated/Large Power Consumption/Short Stand-by Time



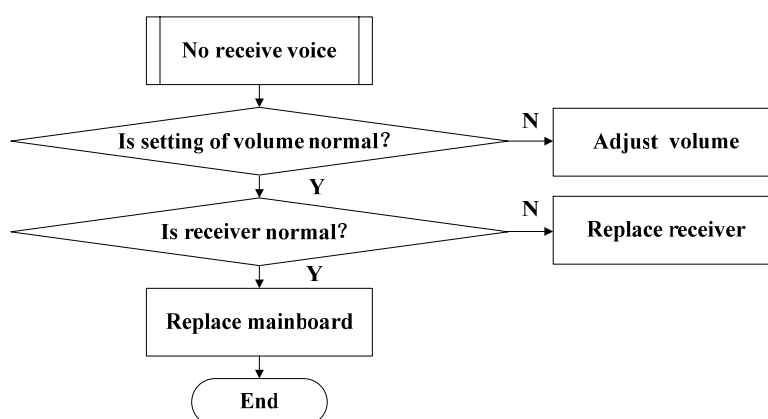
3.7 Card Unidentified



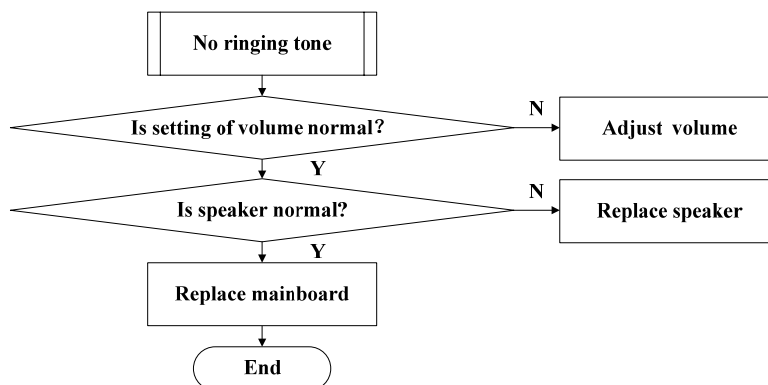
3.8 No Transmitted Voice



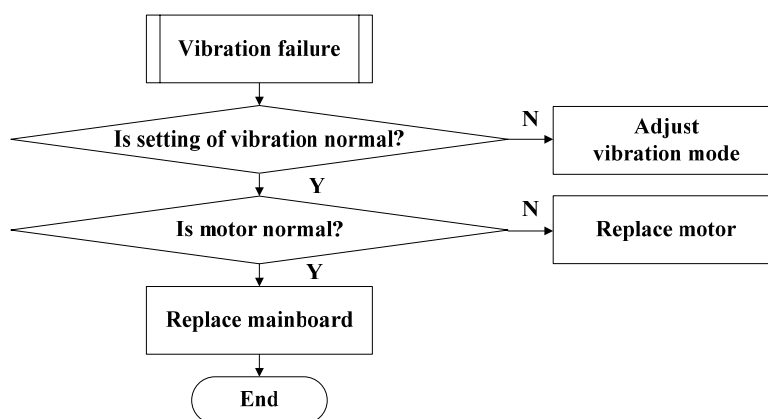
3.9 No Receive Voice



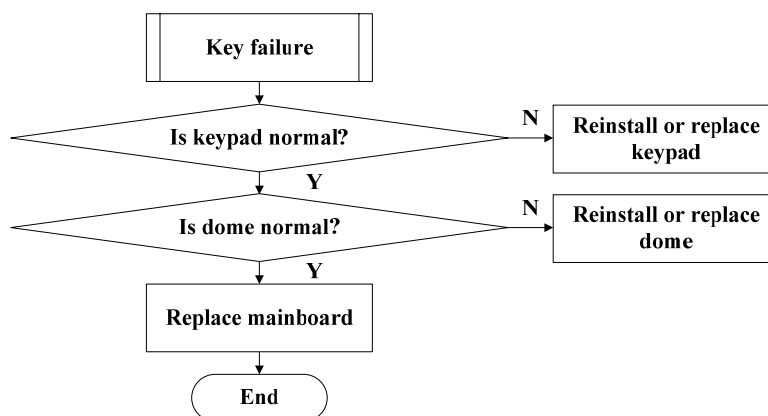
3.10 No Ringing Tone



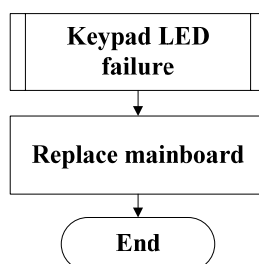
3. 11 Vibration Failure



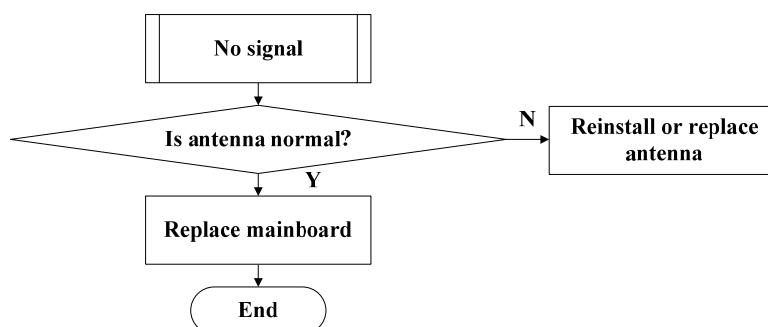
3. 12 Key Failure



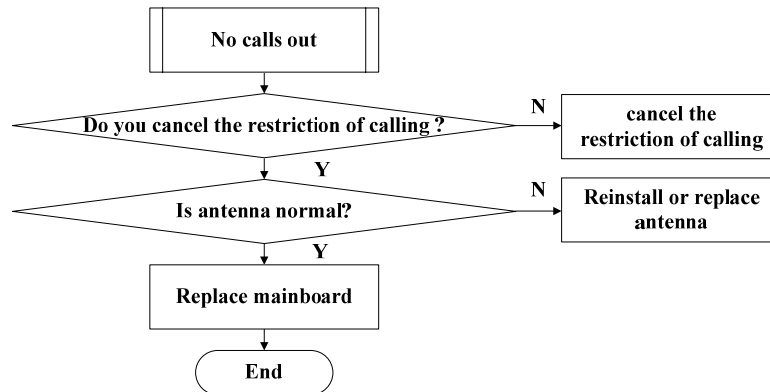
3. 13 Keypad LED Failure



3. 14 No Signal



3. 15 No Calls Out



4. Complete Installation BOM

ZTEC336 CDMA 1X Digital Mobile Phone Complete Installation BOM		
NO.	Material Code	Material Name
1	055401002758	ZTE C336 back cover
2	055401002759	ZTE C336 front cover
3	055401002760	ZTE C336 battery cover
4	055402000789	ZTE C336 keypad
5	055402100013	C330 DOME
6	050603100064	C300 inner antenna
7	035030100186	LCD
8	035040300038	MIC
9	035070100022	Motor
10	035040400025	Receiver
11	035040100057	Speaker
12	055402000811	ZTE C336 RF plug
13	126755350003	ZTE C330 MB

OMIT (Note: The primary elements position diagrams are given. If all the complete installation BOM are needed, please make an application to our document base.)