

Technology Document

Document Title: ZTEC332 CDMA 1X After-sales Service
Manual (Level 1)

Document Number:

Version: A

Document Quality Grade:

Total 25 pages

(Cover Included)

Drafted Xu Kun

Checked _____

Signed _____

Standardized _____

Approved _____

ZTE CORPORATION

Modification Record

File No.	Version No.	Drafted	Date	Modification Reason	Main Modification Content
	A	Xu Kun	2007-08-07	None	None

Notice: 1. Fill in the table while modify the document.

2. The modification reason and main modification content columns are filled in none during first document making.

CONTENT

1. PRODUCT SUMMARIZE.....	1
1.1 STANDARD INSTALLATION	1
1.2 SPECIFICATION.....	1
1.3 MAIN FUNCTIONS	1
1.4 INNER TYPE	2
2. INNER STRUCTURE AND ELEMENTS.....	2
2.1 FUNCTION TEST	2
2.2 SOFTWARE DOWNLOAD	3
2.3 DISASSEMBLY FLOW	8
2.4 COMPOSING	12
2.5 BLOCK DIAGRAM	12
2.6 BASIC DESCRIPTION	12
2.7 MAIN TEST POINTS	13
3. BASIC FLOW CHART OF FAMILIAR TROUBLESHOOTING (LEVEL 1).....	14
3.1 STRUCTURAL PART FAILURE	14
3.2 SWITCHING ON FAILURE.....	14
3.3 HANGING UP	15
3.4 AUTOMATICALLY SWITCH OFF	16
3.5 CHARGING FAILURE.....	16
3.6 HANDSET HOT / STANDBY TIME SHORT	17
3.7 CAN NOT DETECT UIM CARD.....	17
3.8 NO TRANSMISSION VOICE	17
3.9 NO VOICE RECEIVING/NOISE IN THE RECEIVER/LOW VOICE VOLUME.....	18
3.10 VIBRATION FAILURE	19
3.11 KEY-PRESS FAILURE	20
3.12 DISPLAY FAILURE	20
3.13 KEY BACKLIGHT FAILURE	21
3.14 NO SIGNAL	21
3.15 NO CALL OUT.....	22
4. PART LIST	22

1. Product Summary

1.1 Standard Installation

Serial No.	Name	Quantity
1	Handset	1
2	Lithium Battery	1
3	Charger	1

1.2 Specification

- ✧ Network: CDMA
- ✧ Frequency Scale: 824.04 MHz~848.97MHz
- ✧ Dimension (high*width*ply): 104mm*46mm*13mm
- ✧ Weight: 70g (including standard battery)
- ✧ Antenna: Inner antenna
- ✧ LCD: TFT, CSTN 65K Color, 128*128
- ✧ Backlight: Blue
- ✧ Memory: 64 Mbit Flash, 16 Mbit SRAM
- ✧ Talk Time: over 160 minutes
- ✧ Standby Time: over 160 hours



1.3 Main Functions

- ✧ Call record: 40 calls including recently called, recently received and missed calls
- ✧ Ring and vibration
- ✧ Polyphone ring tone: 32 polyphone tones, including 20 rings for incoming call and 6 for SMS
- ✧ Language: Chinese/English
- ✧ SMS: 100 in outbox

- ✧ SMS: 100 in inbox
- ✧ SMS length: 160 English letters or 70 Chinese characters
- ✧ Radio
- ✧ Phone book, calculator, games, alarm clock and stopwatch.

1.4 Inner Type

Inner Type	Outer Type
ZTEC332	C332

2. Inner Structure and Elements

2.1 Function Test

Inner ESN number test / version test

- ◆ Input ‘*#06#’ to test ESN to see if the inner ESN number is the same as that on the handset.
- ◆ Input ‘*983*837#’ and select ‘Version’ to ensure confirmation of the handset version. Press ‘End call key’ to go back to the standby interface.

Simple Function Test

- ◆ Input ‘*983*0#’ to enter system self-test, including LCD→ring tone→vibration→keyboard→volume frequency circuit→earphone→radio, and then exit.

Main Test Items

- ◆ LCD test: check whether there is any displaying default such as line defect, point defect or askew displayer.
- ◆ Ring tone/vibration test: check whether there is any abnormal cacophony or whether the vibration is even.
- ◆ Key test: see whether concerning letters or words could be inputted with even pressing strength and whether the keys are with enough springiness and fine handle.
- ◆ Volume frequency circuit test: huff to MIC to see whether only susurru echoing but not any other cacophony.
- ◆ Earphone test: insert earphone and huff to MIC to see whether only susurru echoing in earphone.
- ◆ Radio test: insert earphone and test radio function to make sure no cacophony existing.
- ◆ Press ‘End call’ after all the tests to restart the phone.

2.2 Software Download

- ◆ **Software download illumination**

Each handset to be repaired should be upgraded to the latest version, and each repaired handset should be in the latest version.

- ◆ **Install the download platform**

C332 download platform operation is the same as C310. C310 software download operation is used in this document. Pay attention to select correct software version in practical operation.


- ◆ **Data cable**

C332/C310 download data cable (code: ISO13032)




- ◆ **Data cable driver**


R52&VX download data cable driver

 R52&VX download data cable driver.exe

- ◆ **Download platform installation: ZPST_DL_P300V1.01.01setup**

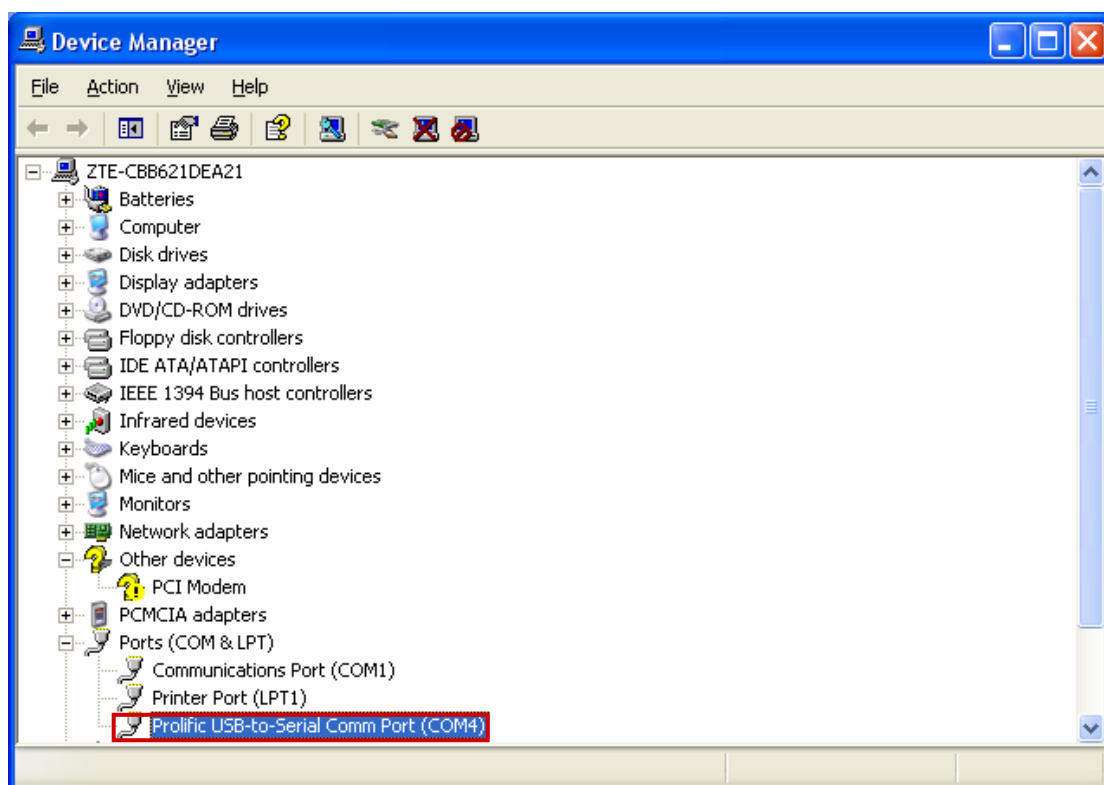
 ZPST_DL_P300V1.01.01setup

- ◆ **Double click the icon on the desktop after installation.**

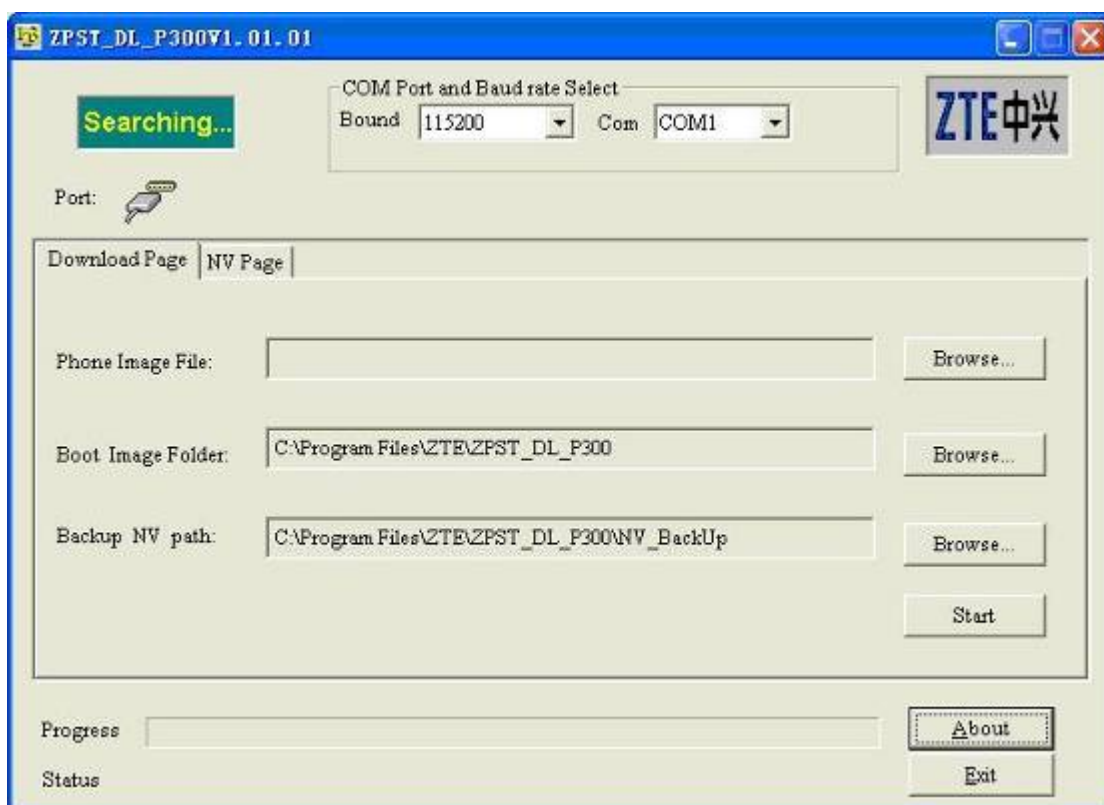
 ZPST_DL_P300V1.01.01.exe

- ◆ **Check the serial port after connecting to the data cable.**

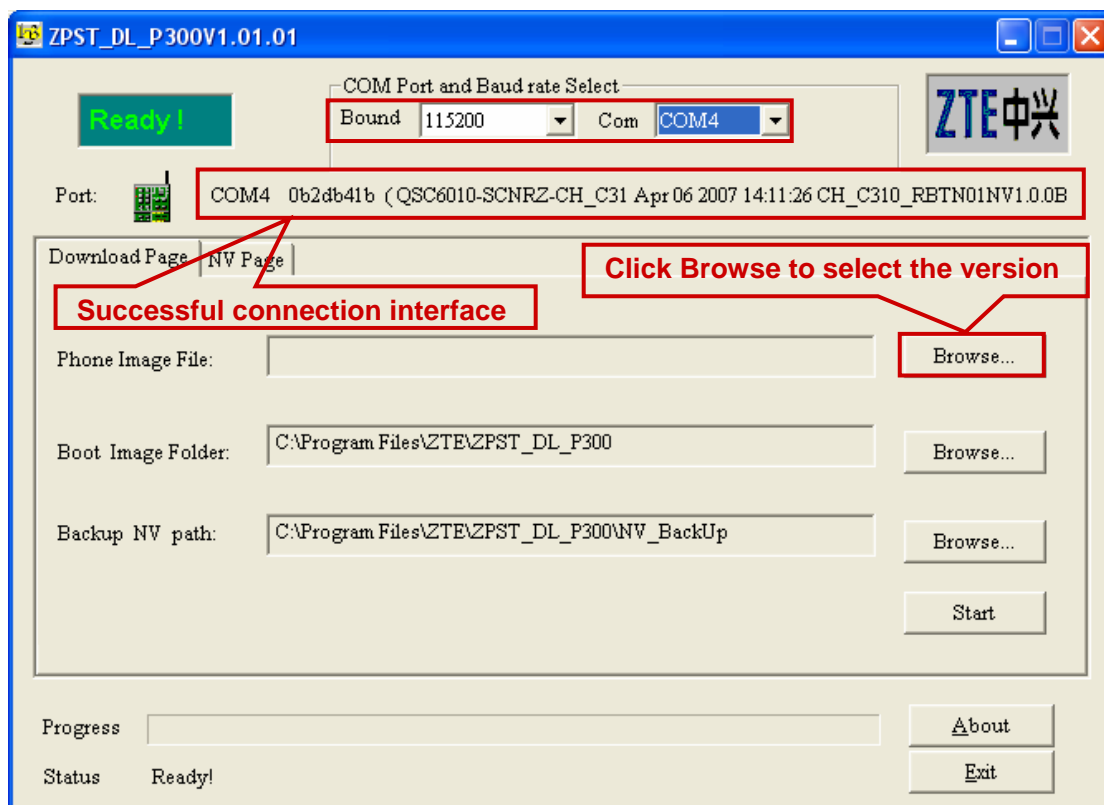
Checking path: my computer→attribute→hardware→facility manager→port



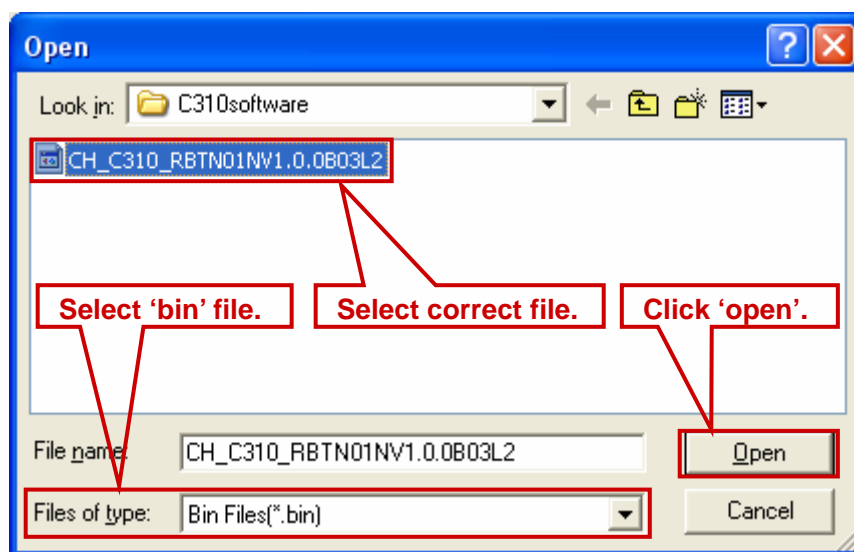
- ◆ The main interface is as follow:



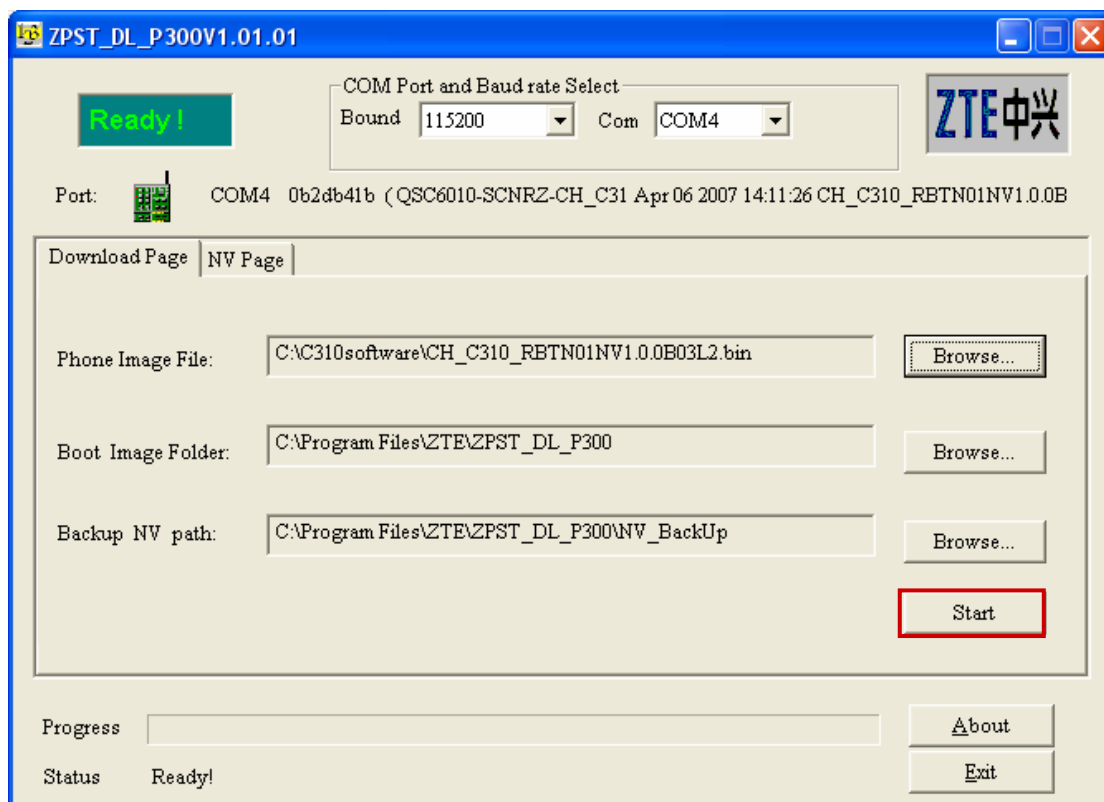
- ◆ Select Bound115200.
- ◆ Select the correct port.



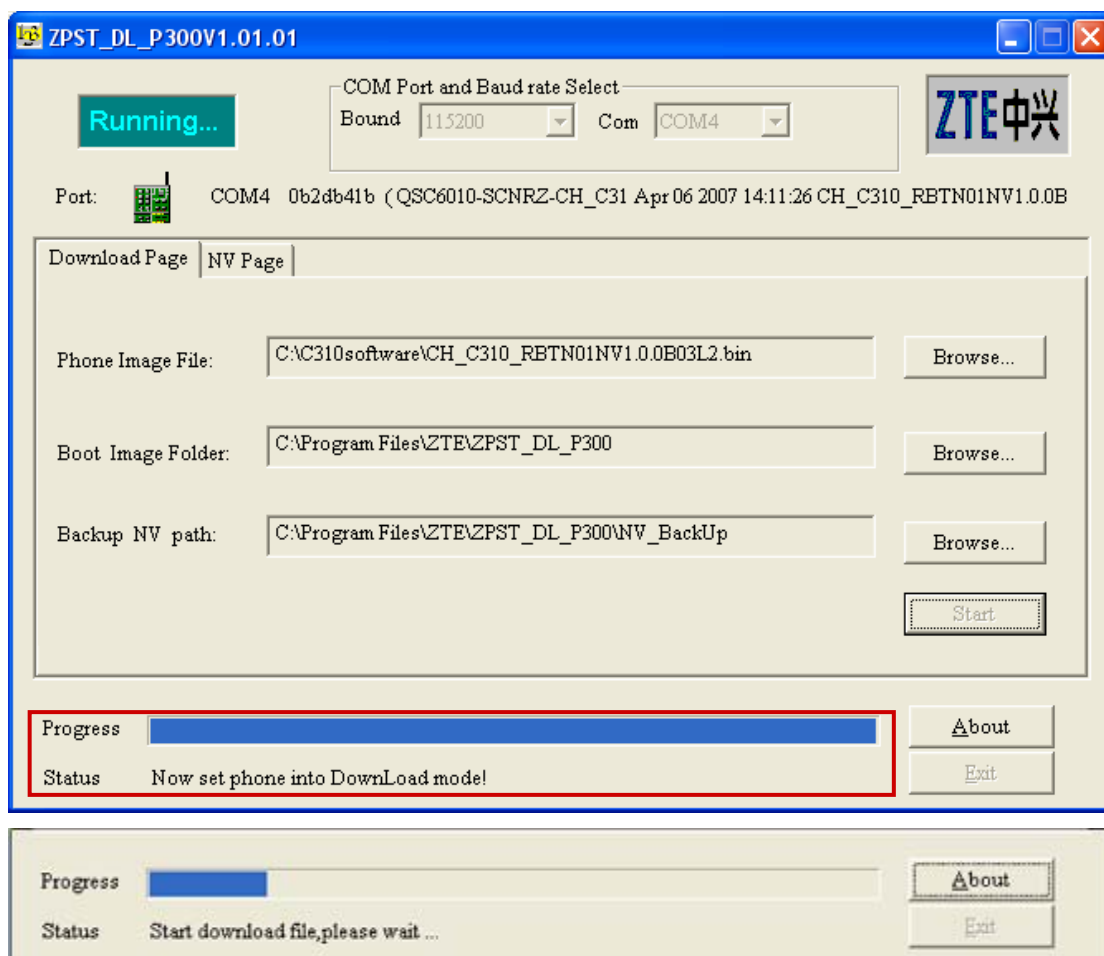
- ◆ Select the correct version.



- ◆ Click Start to download.



◆ Downloading.



Progress	<div style="width: 100%; height: 15px; background-color: blue;"></div>	<input type="button" value="About"/>
Status	Download the image file complete! Reseting.....	<input type="button" value="Exit"/>

Progress	<div style="width: 100%; height: 15px; background-color: blue;"></div>	<input type="button" value="About"/>
Status	Searching handset.....	<input type="button" value="Exit"/>

Progress	<div style="width: 50%; height: 15px; background-color: blue;"></div>	<input type="button" value="About"/>
Status	Restore NV item ...	<input type="button" value="Exit"/>

Progress	<div style="width: 100%; height: 15px; background-color: blue;"></div>	<input type="button" value="About"/>
Status	Reset handset.....	<input type="button" value="Exit"/>

◆ Finish.

ZPST_DL_P300V1.01.01			
<div style="border: 2px solid red; padding: 5px; display: inline-block; color: white; background-color: green; font-weight: bold;">PASS !</div>		COM Port and Baud rate Select Bound: 115200 Com: COM4	
Port:	COM4 0b2db41b (QSC6010-SCNRZ-CH_C31 Apr 06 2007 14:11:26 CH_C310_RBTN01NV1.0.0BC)		
Download Page NV Page			
Phone Image File:	C:\C310software\CH_C310_RBTN01NV1.0.0B03L2.bin	<input data-bbox="1141 1243 1284 1265" type="button" value="Browse..."/>	
Boot Image Folder:	C:\Program Files\ZTE\ZPST_DL_P300	<input data-bbox="1141 1332 1284 1355" type="button" value="Browse..."/>	
Backup NV path:	C:\Program Files\ZTE\ZPST_DL_P300\NV_BackUp	<input data-bbox="1141 1422 1284 1444" type="button" value="Browse..."/>	
			<input data-bbox="1141 1489 1284 1534" type="button" value="Start"/>
Progress	<div style="width: 100%; height: 15px; background-color: blue;"></div>	<input type="button" value="About"/>	
Status	Success!	<input type="button" value="Exit"/>	

2.3 Disassembly Flow



**Tools (From left to right):
Anti-electrostatic glove,
Anti-electrostatic wrist,
Screwdriver,
Tweezers,
Disassembly housing tool.**

- ◆ Take out the battery.



- ◆ Pay attention to the positions of four screws.



- ◆ Push aside the plug on the power port before separating the front and back covers.



- ◆ Pay attention to the lock while disassembling with the disassembly housing tool.



- ◆ Back cover after separating.
- ◆ The correct method to install MIC: put the side with 3 protuberant points upward. Make sure it is well connected to the connecting points.



- ◆ The two screws to fix the built-in antenna.



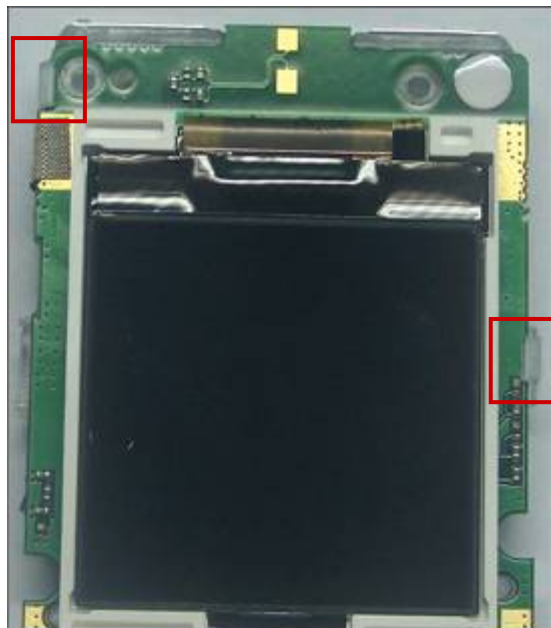
- ◆ The front cover after separating.
- ◆ Make sure the receiver is well connected to the connecting point while installation.
- ◆ Make sure of good installation of locating hole and clip while installing the keypad.



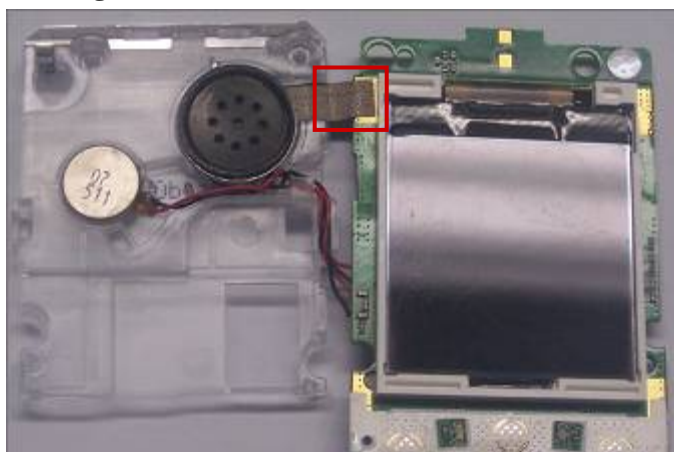
- ◆ Pay attention to the right installing method for motor/speaker with cables around.



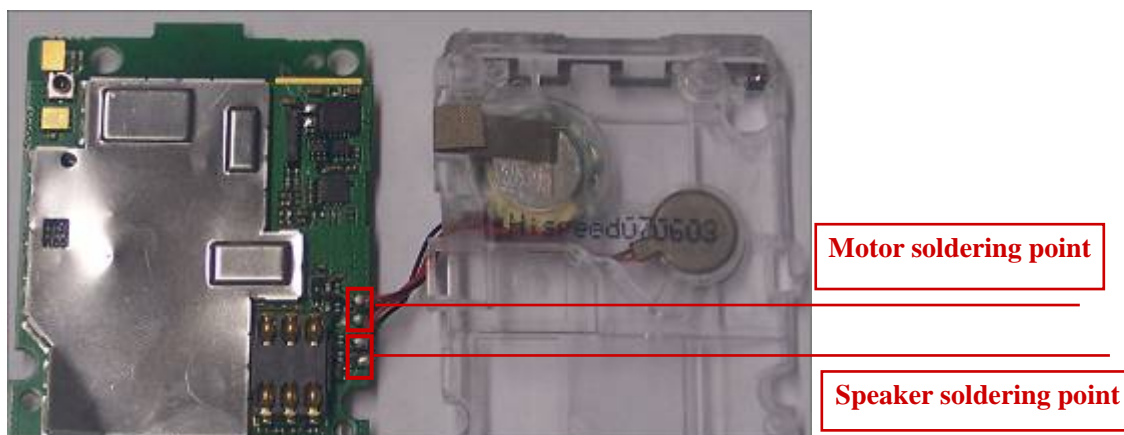
- ◆ Pay attention to the position for the two locks while disassemble the built-in antenna rack. Two locks should be pushed to the right position while installation.



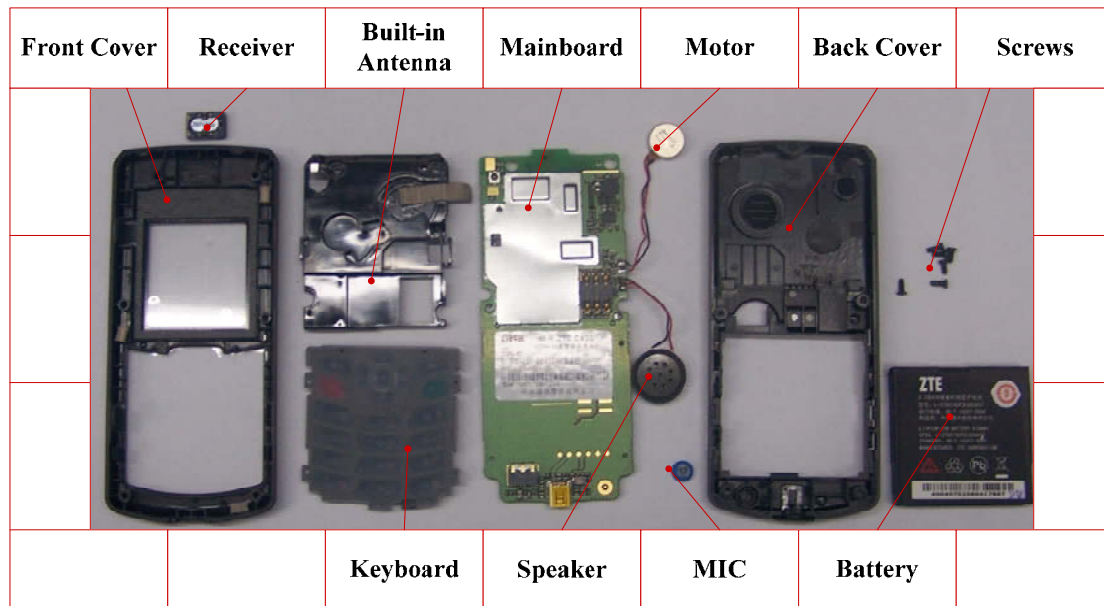
- ◆ The built-in antenna rack after mainboard separating. Pay attention to the position where lies the insulating adhesives.



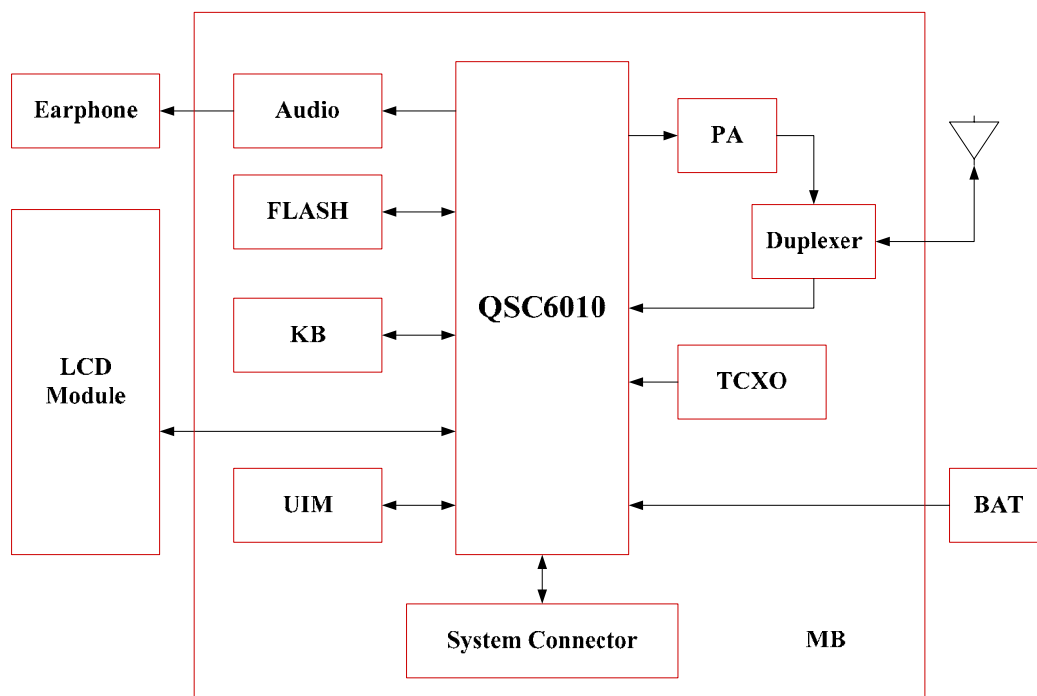
- ◆ Motor/speaker soldering points.



2.4 Composing

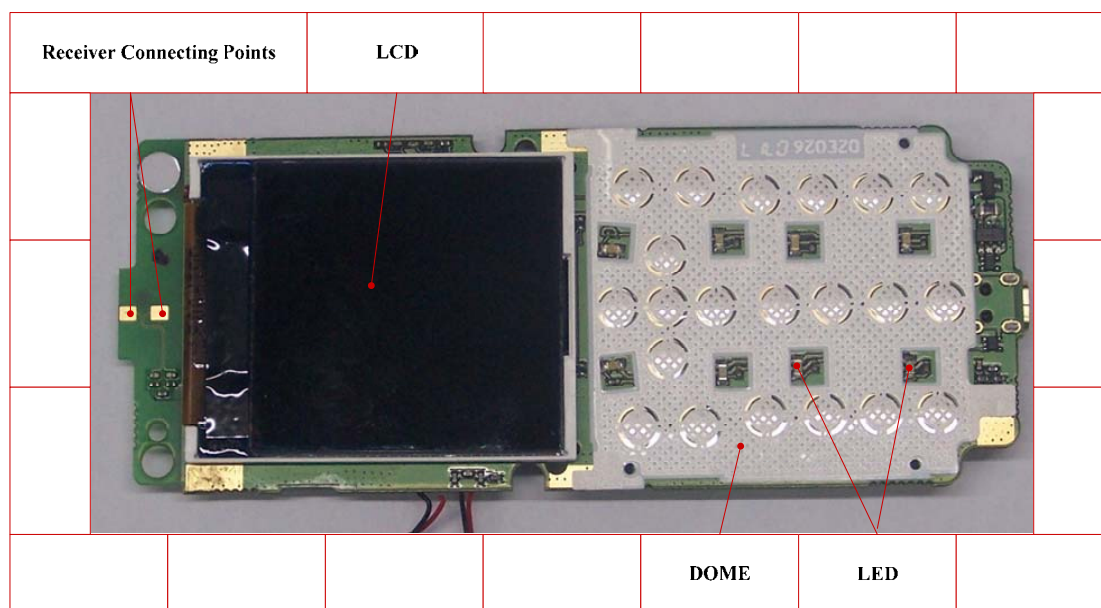


2.5 Block Diagram

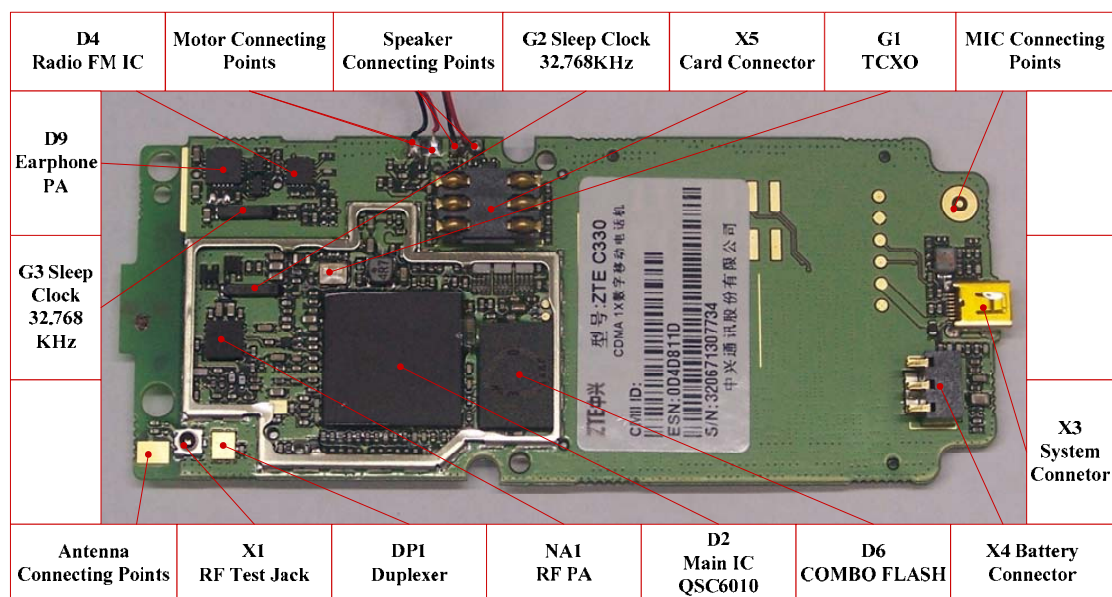


2.6 Basic Description

Note: C332 mainboard is the same as C330. So this document refers to C330 MB distributing.



MB Top Distributing

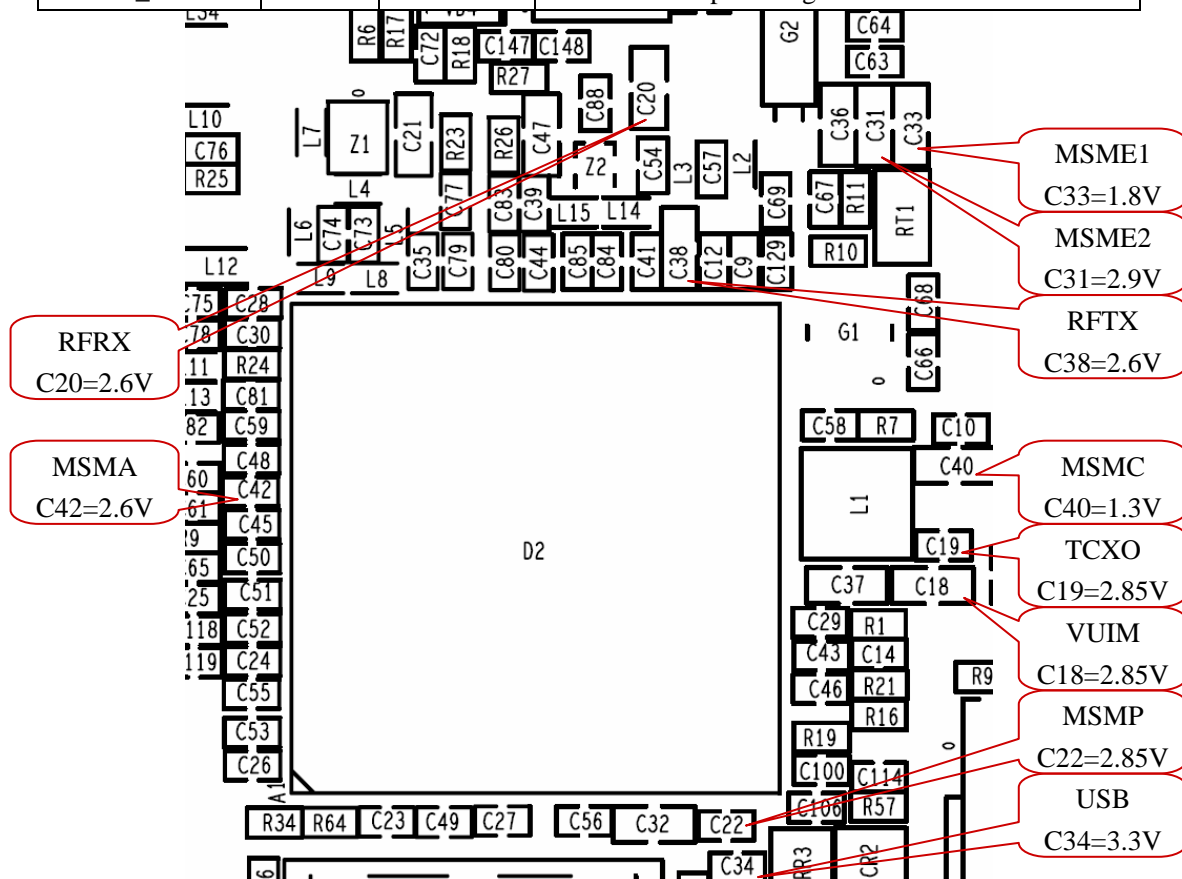


MB Bottom Distributing

2.7 Main Test Points

Name	Voltage	Test Point	Function
VREG_TCXO	2.85V	C19	Power supply to system TCXO.
VREG_RFTX	2.6V	C38	Power supply to radio frequency transmitting circuit.
VREG_RFRX	2.6V	C20	Power supply to the front port of radio frequency receiver.
VREG_MSMP	2.85V	C22	Power supply to the outer facility of the system.

VREG_MSMA	2.6V	C42	Power supply to analogy circuit on the base of the system.
VREG_RUIM	2.85V	C18	Power supply to UIM card.
VREG_USB	3.3V	C34	USB circuit and port circuit.
VREG_MSMC	1.3V	C40	Power supply to CPU of QSC.
VREG_MSME1	1.8V	C33	General cable powering.
VREG_MSME2	2.9V	C31	General cable powering.

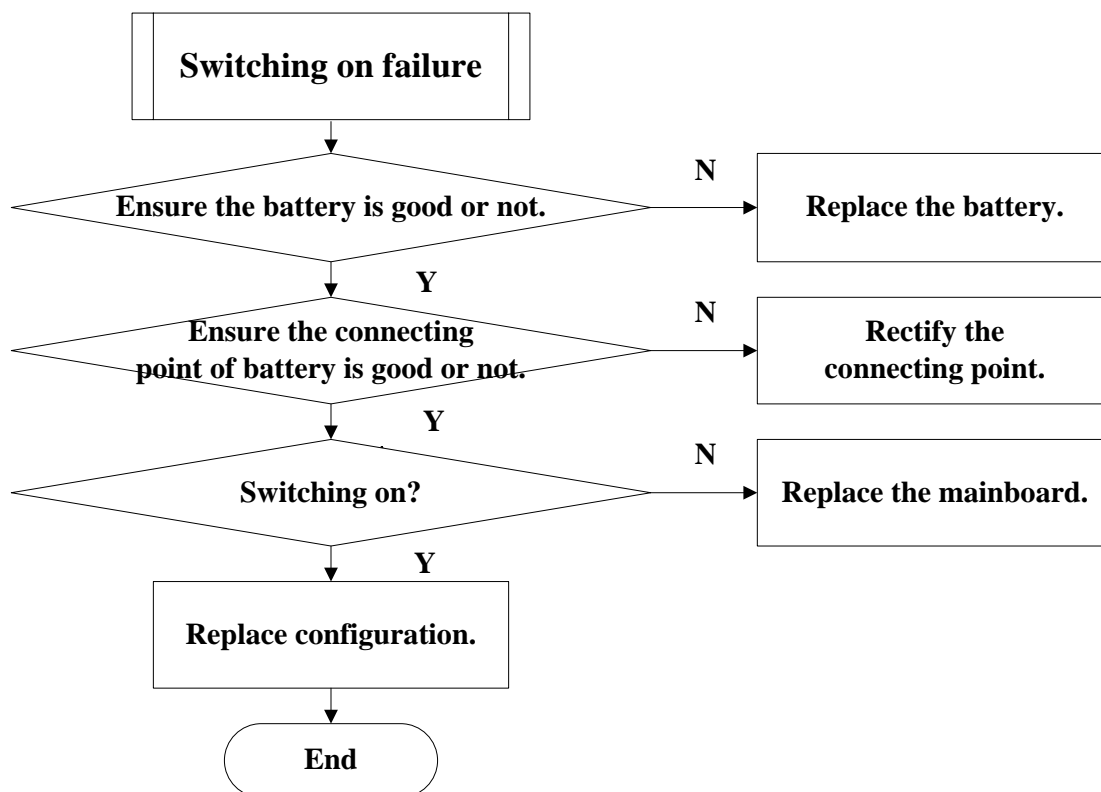


3. Basic flow chart of familiar troubleshooting (Level 1)

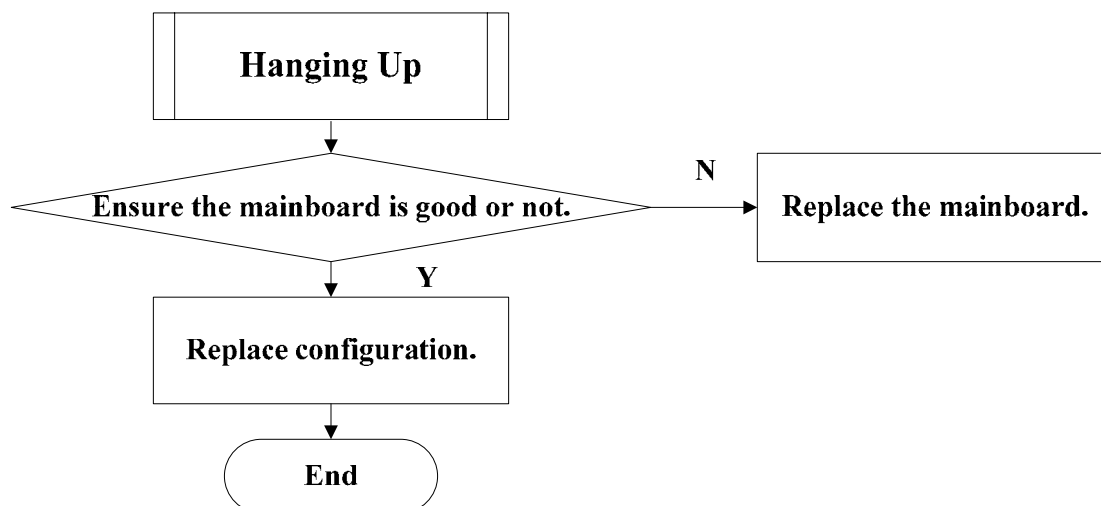
3.1 Structural Part Failure

Please replace the defaulted structural part with references to the handset disassembly process.

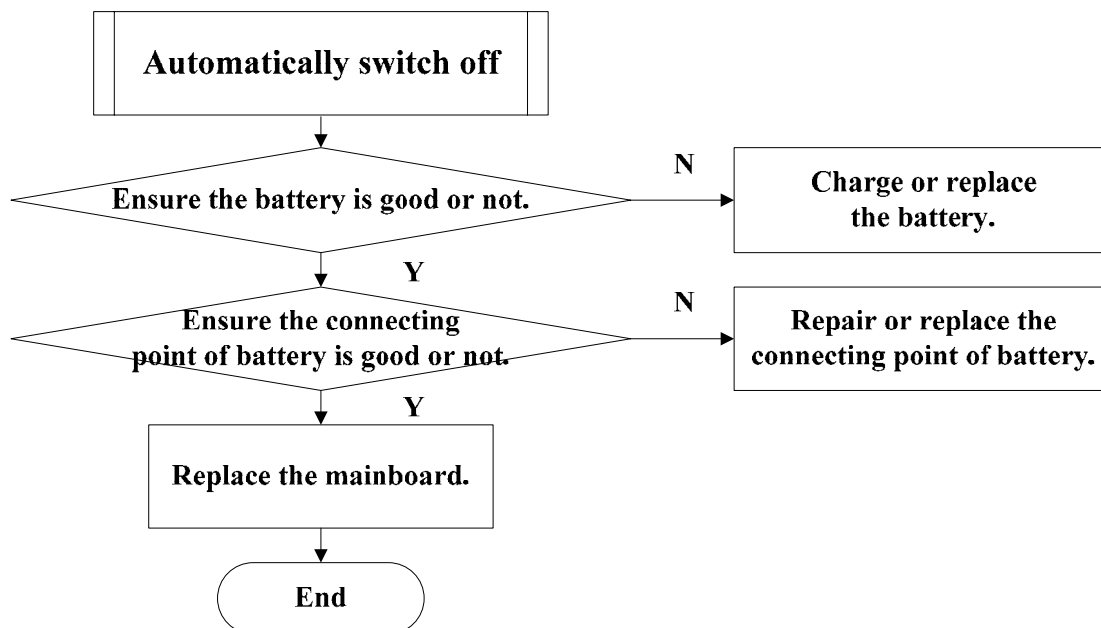
3.2 Switching On Failure



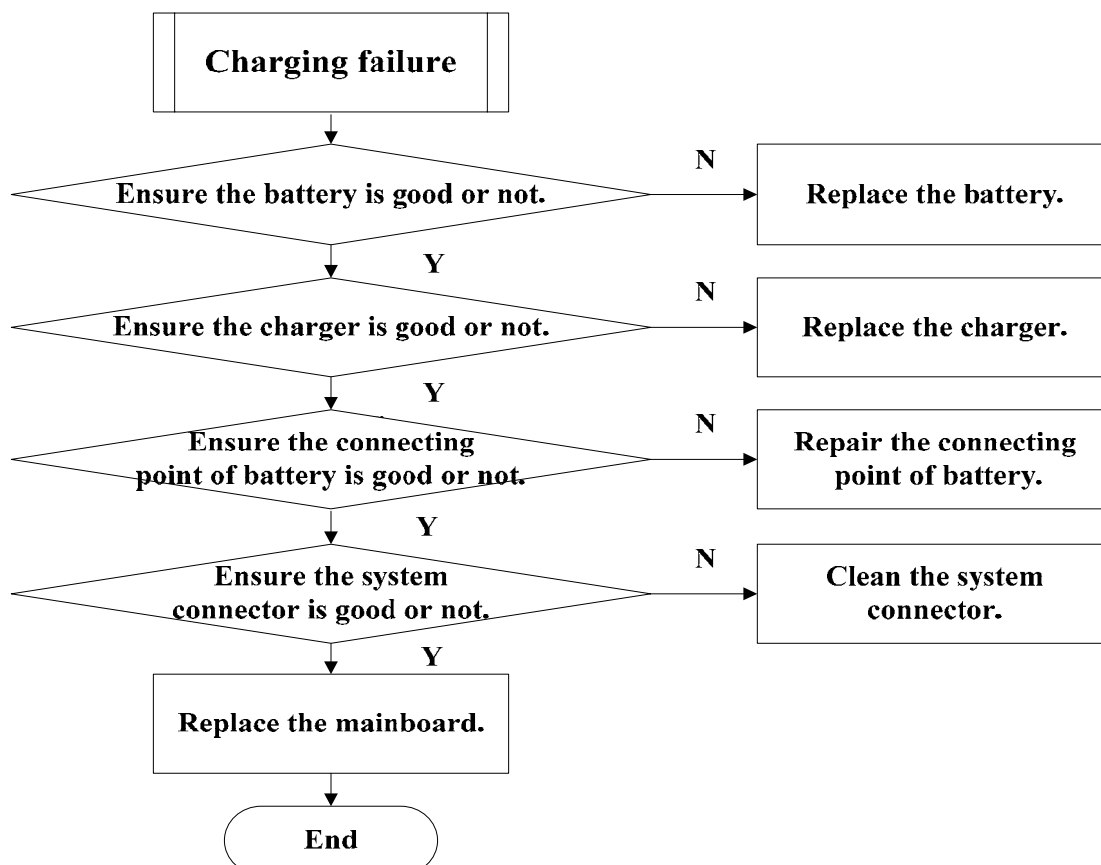
3.3 Hanging Up



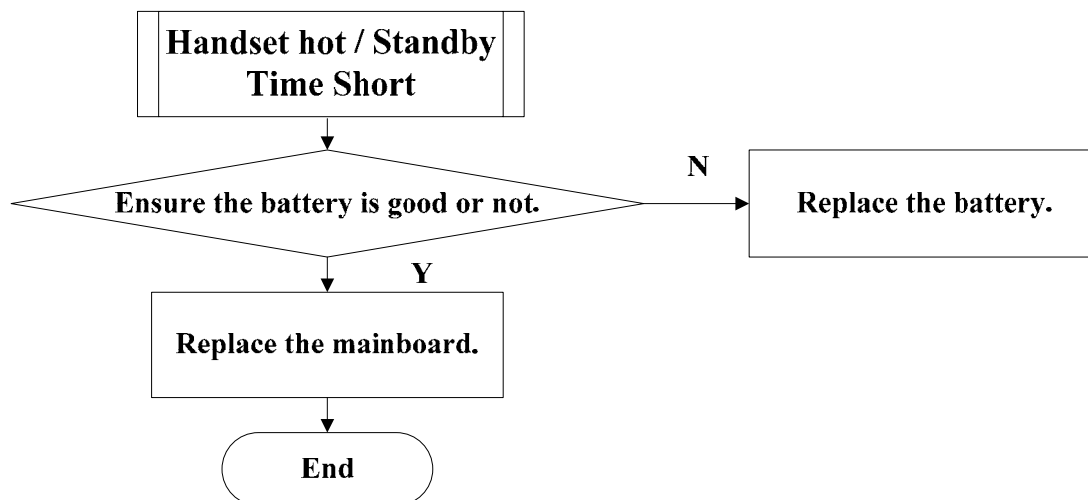
3.4 Automatically Switch Off



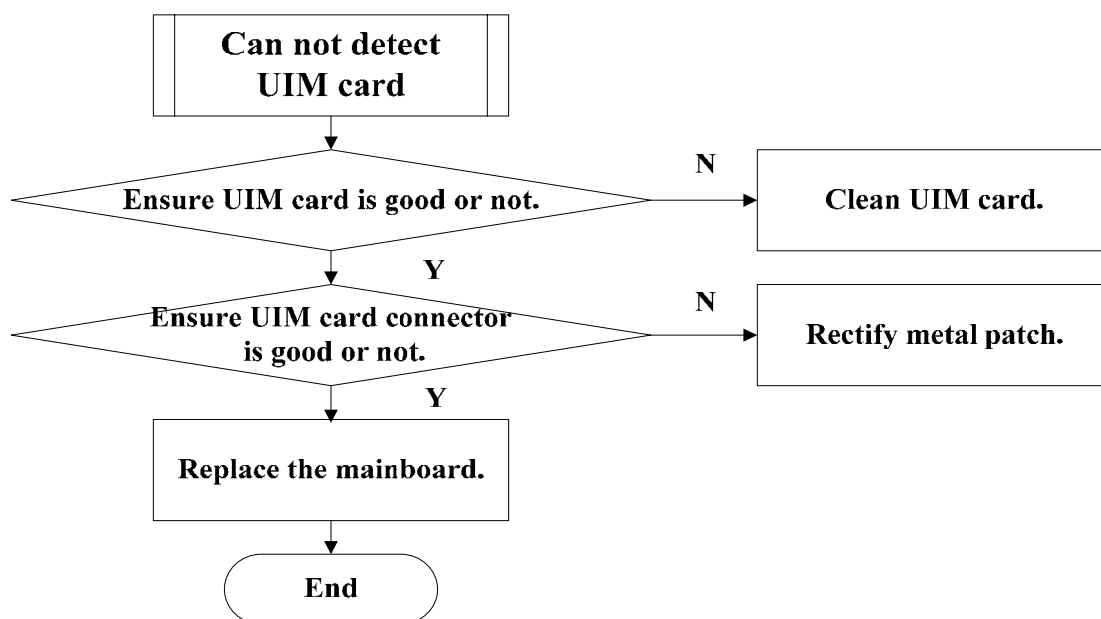
3.5 Charging Failure



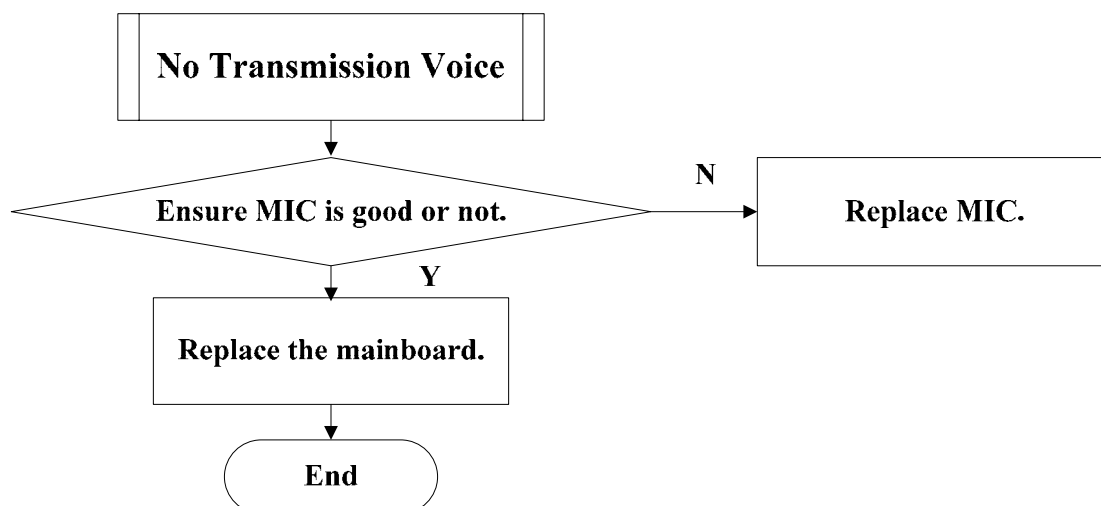
3.6 Handset Hot / Standby Time Short



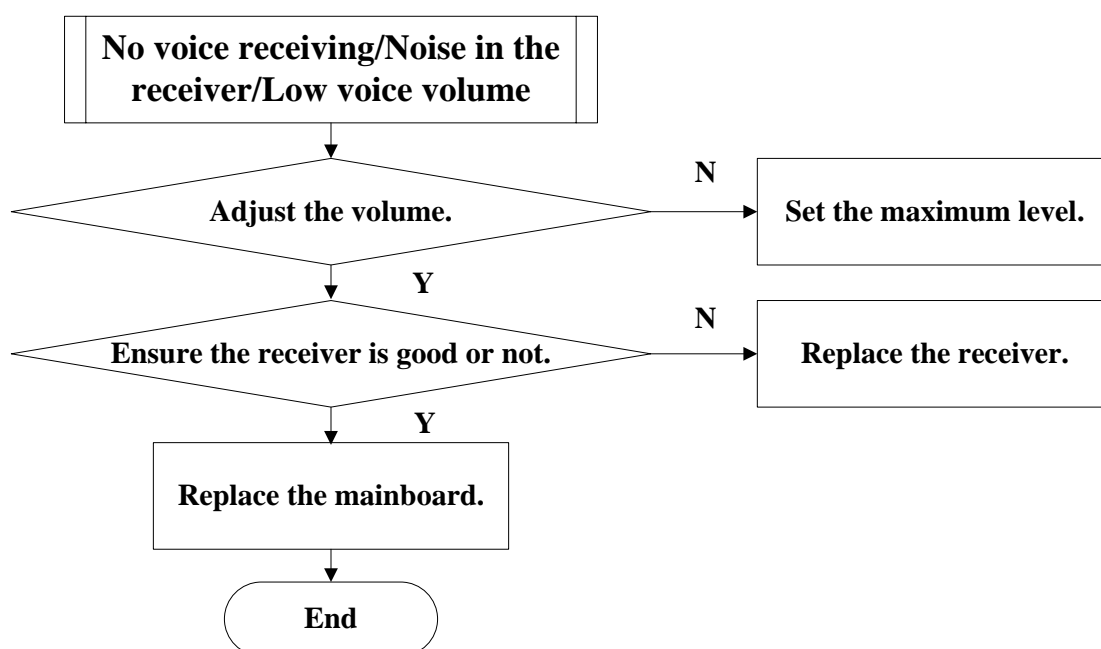
3.7 Can not detect UIM card



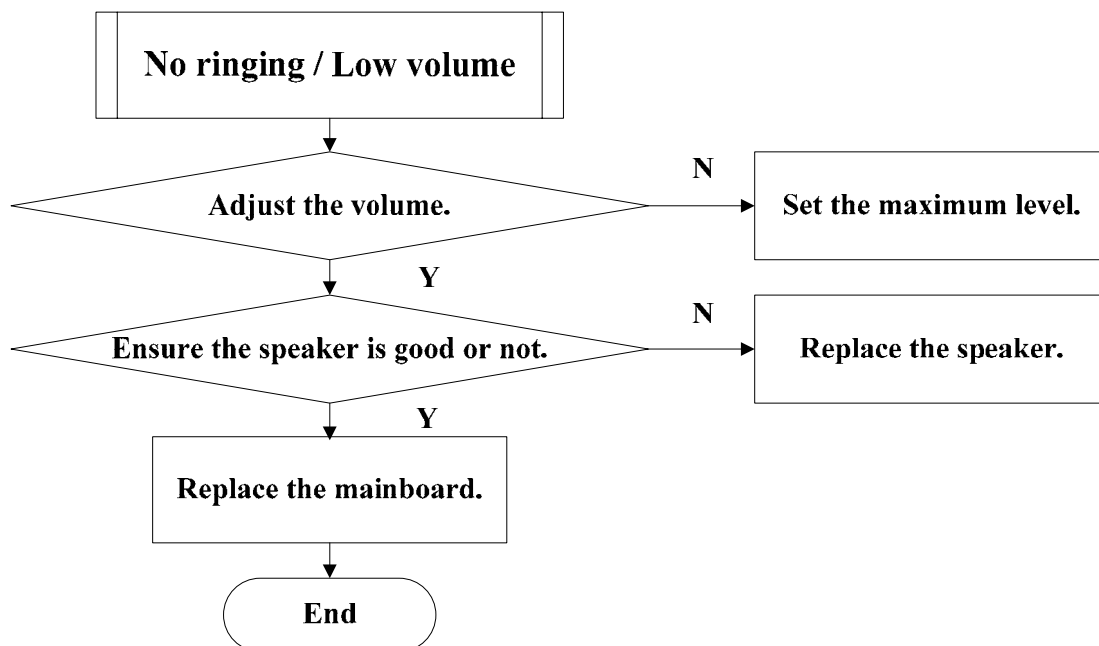
3.8 No Transmission Voice



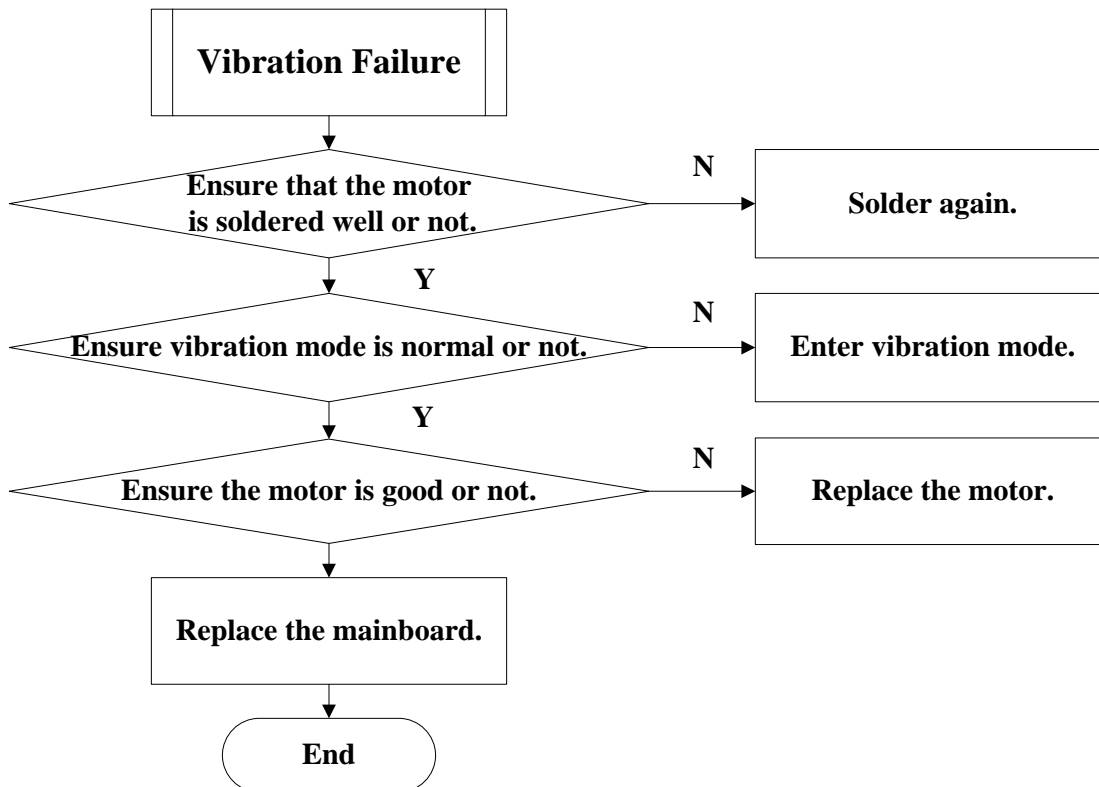
3.9 No voice receiving/Noise in the receiver/Low voice volume



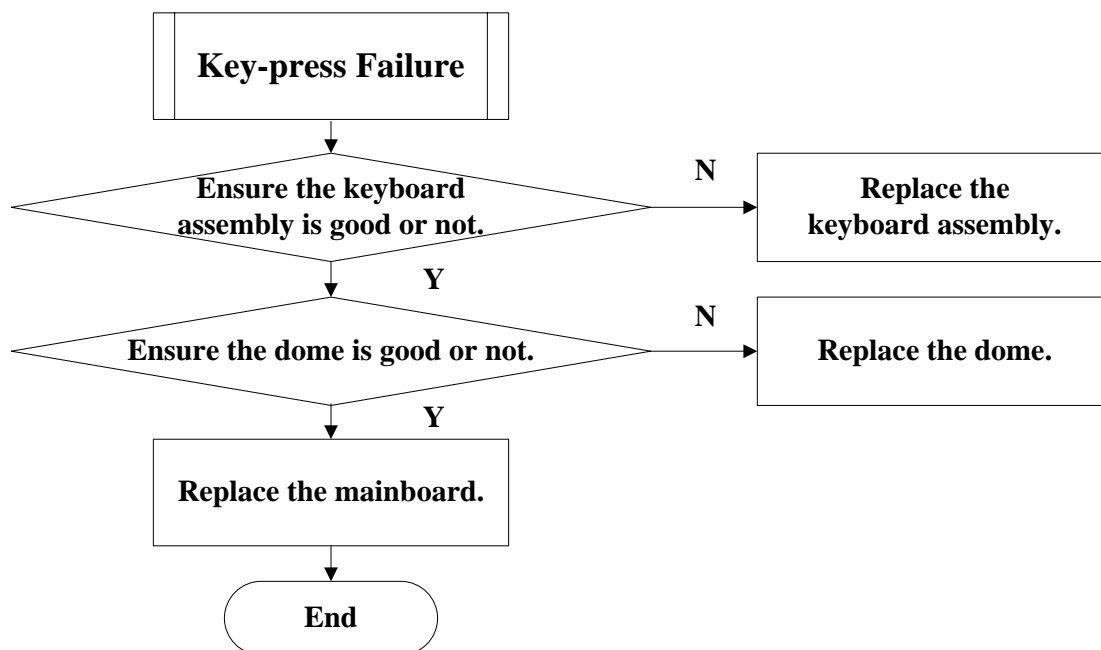
3.10 No ringing / Low volume



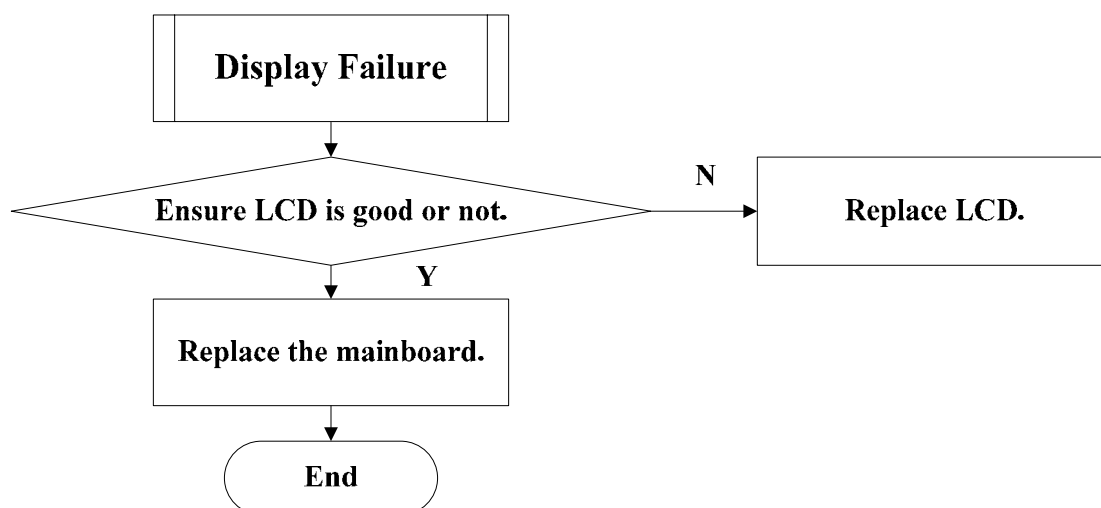
3.11 Vibration Failure



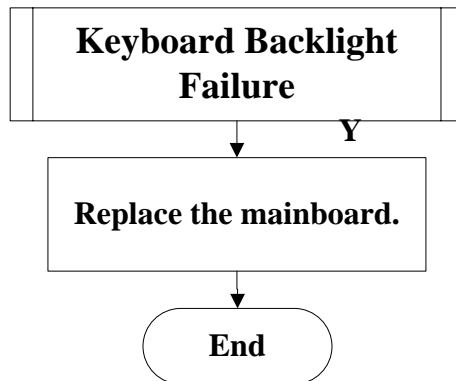
3.12 Key-press Failure



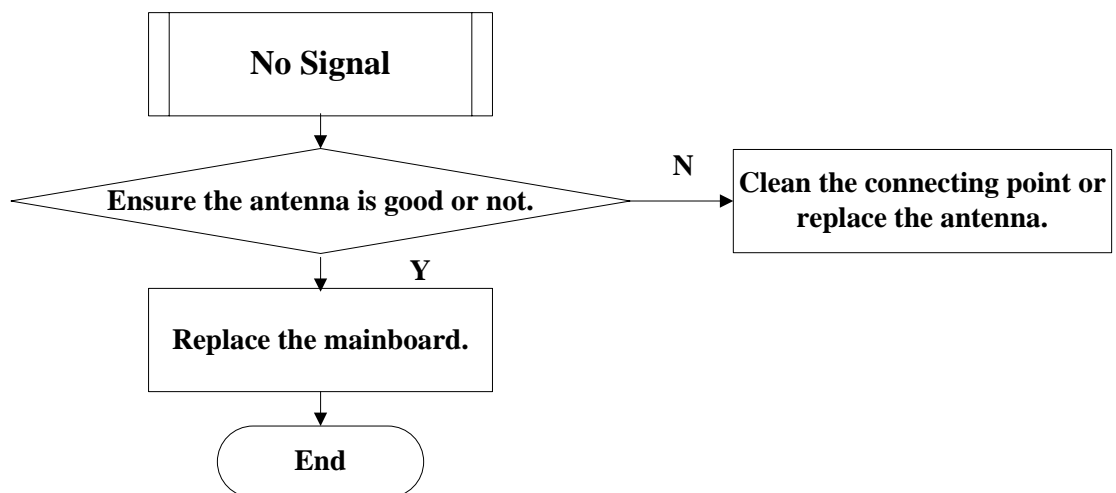
3.13 Display Failure



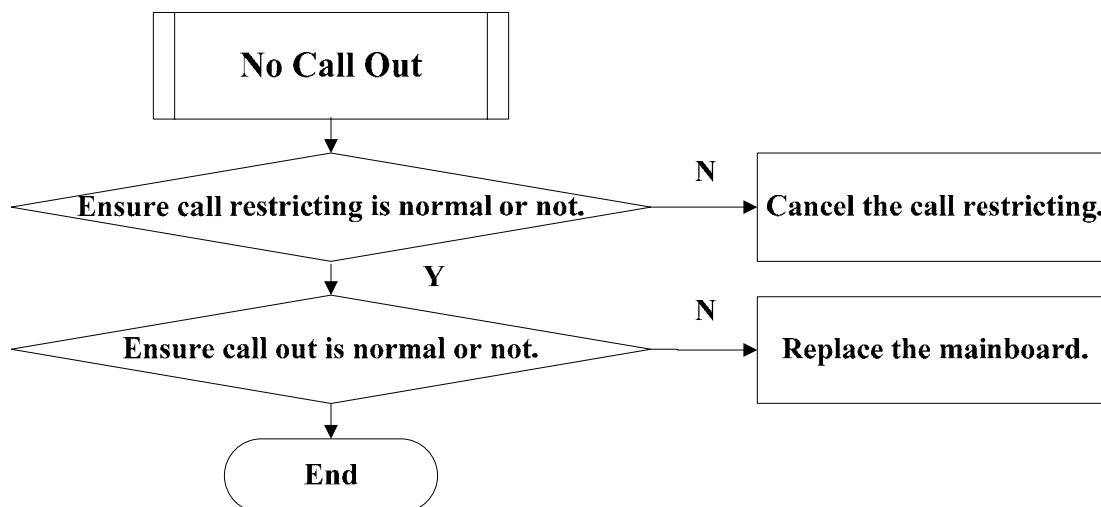
3.14 Key Backlight Failure



3.15 No Signal



3.16 No Call Out



4. Part List

ZTEC332 CDMA 1X digital mobile phone part list		
Serial No.	Material Code	Material Name
1	055401002276	C332 front cover assembly
2	055401002277	C332 back cover assembly
3	055402000639	C332 keyboard assembly
4	055402100013	C330 dome
5	055403000255	C332 lens
6	050603100064	C300 built-in antenna
7	035030100186	1.44'CSTN LCD module assembly
8	035040300038	4015 contact MIC
9	035070100022	motor
10	035040400025	0711 spring receiver
11	035040100057	15-L30H04 speaker without adhesives