

# Technical Document

**Document Title:** C260 CDMA 1X Digital Mobile Phone  
After-sales Services Manual (Level  
1)

**Document No.:**

**Version:**

**Document Quality Level:**

All 29 Pages

(Cover Included)

Drafted      Kuang Fengzhi

Checked      Ying Chenguang

Signed      \_\_\_\_\_

\_\_\_\_\_

\_\_\_\_\_

\_\_\_\_\_

Standardize      \_\_\_\_\_

Approved      \_\_\_\_\_

**ZTE CORPORATION**

## Modification Record

Document No.	Version	Drafted	Date	Reason	Main Modification Points
		Kuang Fengzhi	2007-11-24	None	None
Notice: 1、 Once you modify the document, you need to fill in the table. 2、 Please fill “none” in the modification reason and main modification points during the initial document making.					

# CONTENT

<b>1. PRODUCT OVERVIEW.....</b>	<b>1</b>
1.1 STANDARD CONFIGURATION.....	1
1.2 SPECIFICATIONS.....	1
1.3 FEATURE INTRODUCTION.....	1
1.4 INTERNAL NUMBER.....	2
<b>2. INTERNAL STRUCTURE AND PRINCIPLE.....</b>	<b>2</b>
2.1 FUNCTION TEST.....	2
2.2 DOWNLOADING SOFTWARE.....	2
2.3 DISASSEMBLING FLOW.....	10
2.4 COMPONENTS.....	16
<b>3. BASIC FLOW CHART OF FAMILIAR TROUBLESHOOTING (LEVEL 1).....</b>	<b>18</b>
3.1 OUTER PARTS FAILURE.....	18
3.2 HANGING UP.....	18
3.3 SWITCHING ON FAILURE.....	18
3.4 AUTOMATICALLY SWITCH OFF.....	19
3.5 CHARGING FAILURE.....	19
3.6 HANDSET HOT/STANDBY TIME SHORT.....	20
3.7 CAN NOT DETECT SIM CARD.....	20
3.8 NO TRANSMISSION VOICE.....	21
3.9 MUTE RING/LOW RING VOLUME.....	21
3.10 VIBRATION FAILURE.....	22
3.11 KEY-PRESS FAILURE.....	22
3.12 KEYBOARD BACKLIGHT FAILURE.....	23
3.13 NO CALL OUT.....	23
3.14 NO SIGNAL.....	24
3.15 FILP COVER FAILURE.....	24
3.16 DISPLAY FAILURE.....	25
3.17 NO TRANSMITTED VOICE.....	25
<b>4. PARTS LIST.....</b>	<b>26</b>

## 1. Product Overview

### 1.1 Standard Configuration

No.	Part Name	Qty
1	Handset	1
2	Lithium Battery	1
3	Battery Charger	1

### 1.2 Specifications

- ◆ Overall Appearance: Foldable mobile phone with color screen
- ◆ Dimension: 43mm\*86mm\*23mm
- ◆ Weight: 85g ( Standard Battery Included)
- ◆ Antenna: built-in antenna
- ◆ Talking Time: About 2 hours
- ◆ Standby Time: About 120 hrs



### 1.3 Feature Introduction

- ◆ Single screen and CSTN color screen display with 65536 kinds of color and a 128\*128 array
- ◆ Supporting short messages sending in group
- ◆ Supporting 6 groups of phone number.
- ◆ 12 chord ring tones
- ◆ Supporting BREW picture and ring tone downloading.
- ◆ Supporting UTK function
- ◆ Built-in vibrator
- ◆ Supporting using earphones

## 1.4 Internal Number

Internal Model	External Model
P300D1	ZTE C260

## 2. Internal Structure and Principle

### 2.1 Function Test

**Version Check Instruction:** \*983\*837#

**ESN Check Instruction:** \*#06#

**Testing Functions:**

Input “\*983\*3641#” → Press the **OK** key → Press the \* key to enter the **Quick Test** status, which is automatic. Test LCD, ring tones, motor, backlight, red/green/blue light indicators, keys (manually press each key), end key, echo, and end key in sequence, and earphone. Then perform earphone test and press end key. After these operations, restart the mobile phone.

### 2.2 Downloading Software

- ◆ About software downloading

Every handset sent to repair must be updated to the latest version.

Make ensure that the mobile phone is switched on and connects to the computer successfully, and its battery must be installed when its software is downloaded. During the download process, the mobile phone can not be powered off. And it could not be removed until software download finishes and PASS identification appears. Otherwise, the mobile phone can not be switched on.

- ◆ Cables for Downloading Data

Note: The cable for downloading data can be normally used only when driver files are installed.

Name of the cable: E798

Materials Code of the cable: IS011259




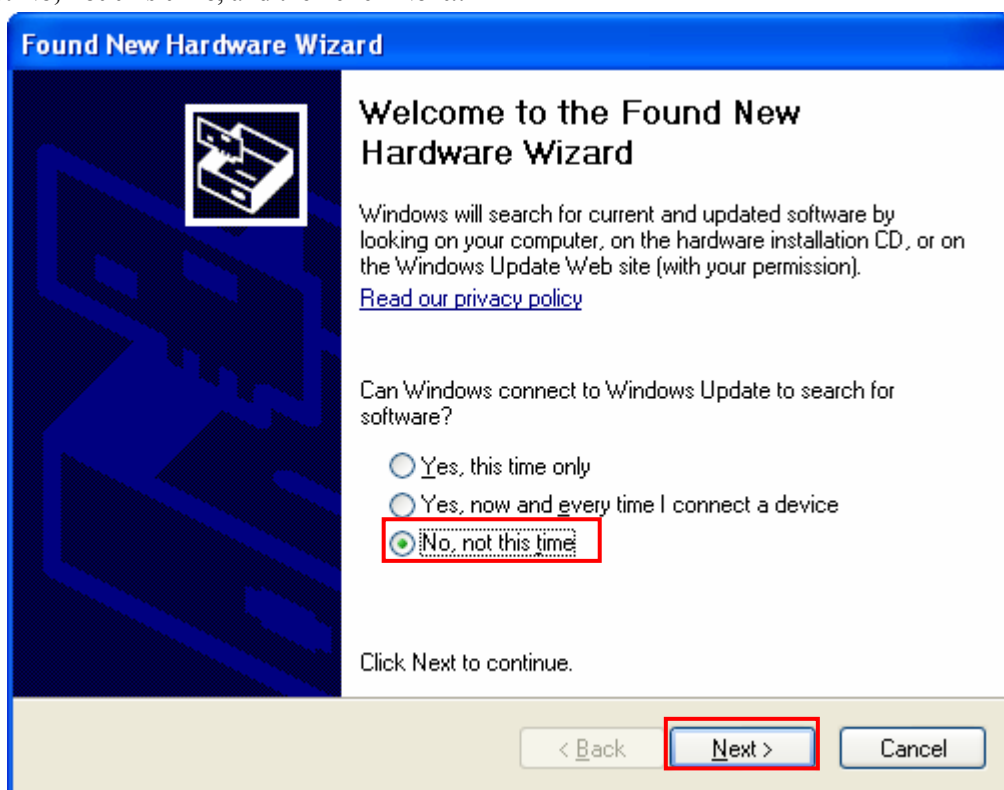
Name of the cable: C700 download data cable

Materials Code of the cable: ISO10158

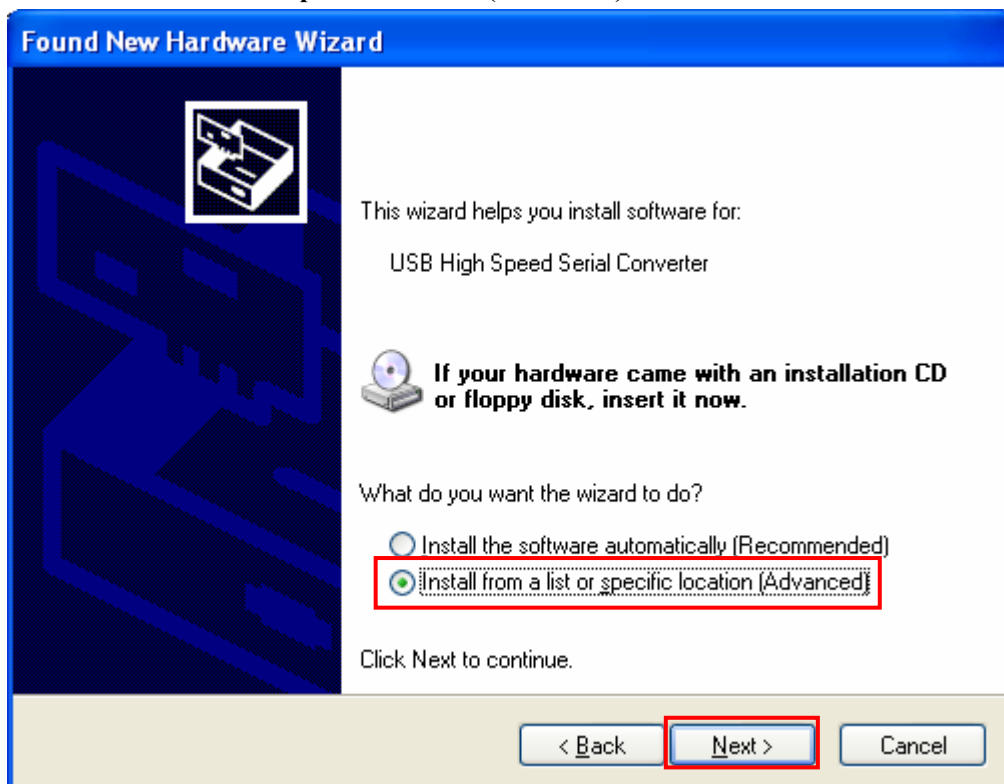


Notice: When using E798 data cable to download software, it is necessary to install the driver for the data download cable. This document only introduces the operation process while downloading software using E798 data cable.

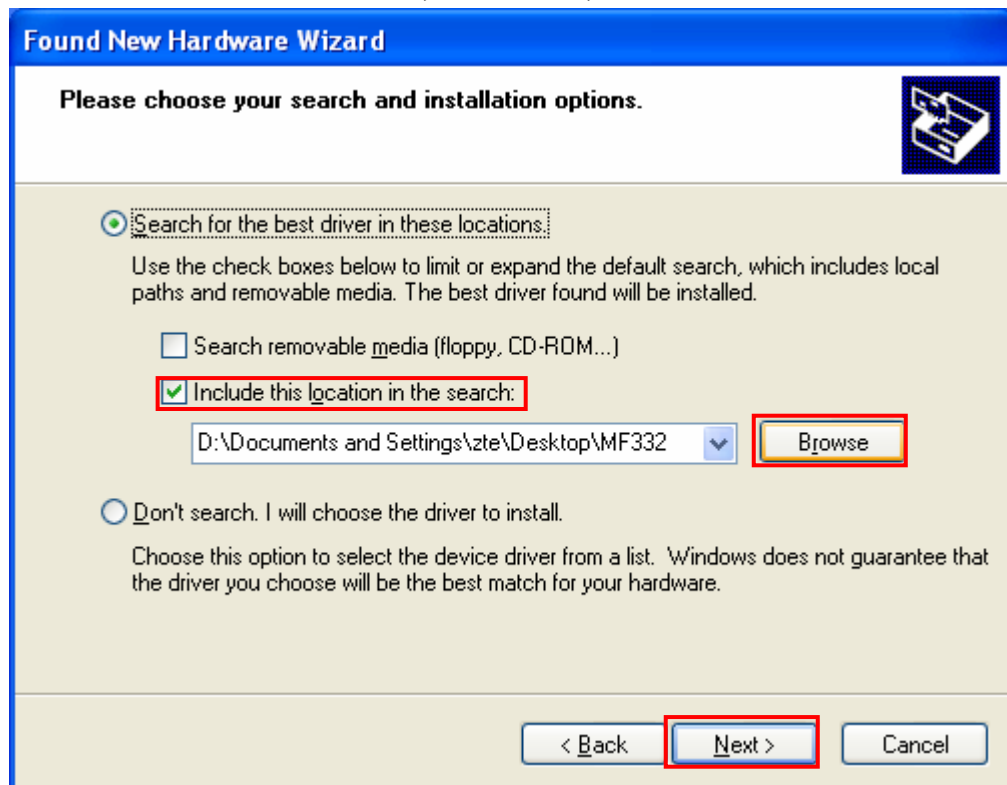
- ◆ Driver files for data download cable  
 E798 USB Driver
- ◆ Connect the cable with the computer:
- ◆ Select **No, not this time**, and then click **Next**.



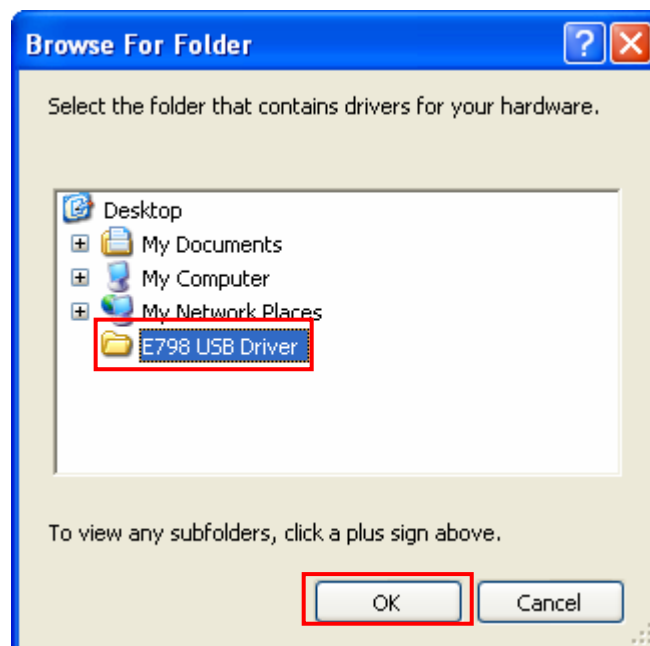
- ◆ Select **Install from a list or specific location (Advanced)** and then click **Next**.



- ◆ Select **Include this location in the search**, click **Browse**, then click **Next**.



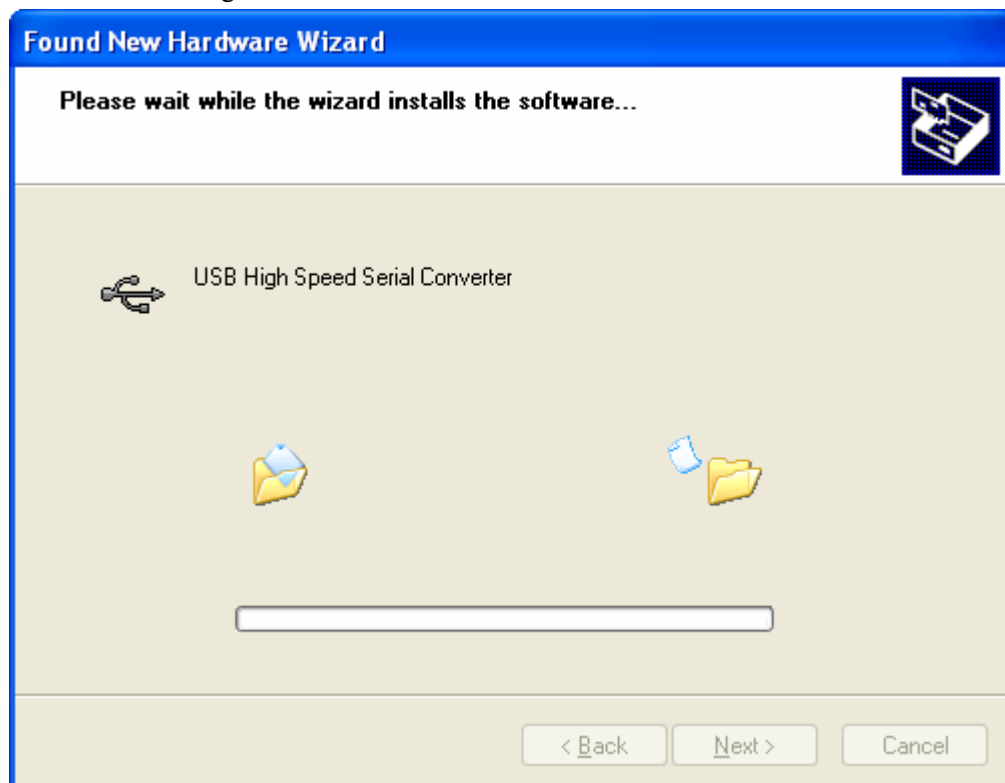
- ◆ Select **E798 USB Driver**, and click **OK**.



- ◆ During the software installation, an interface appears as shown below:
- ◆ Click **Continue Anyway**.

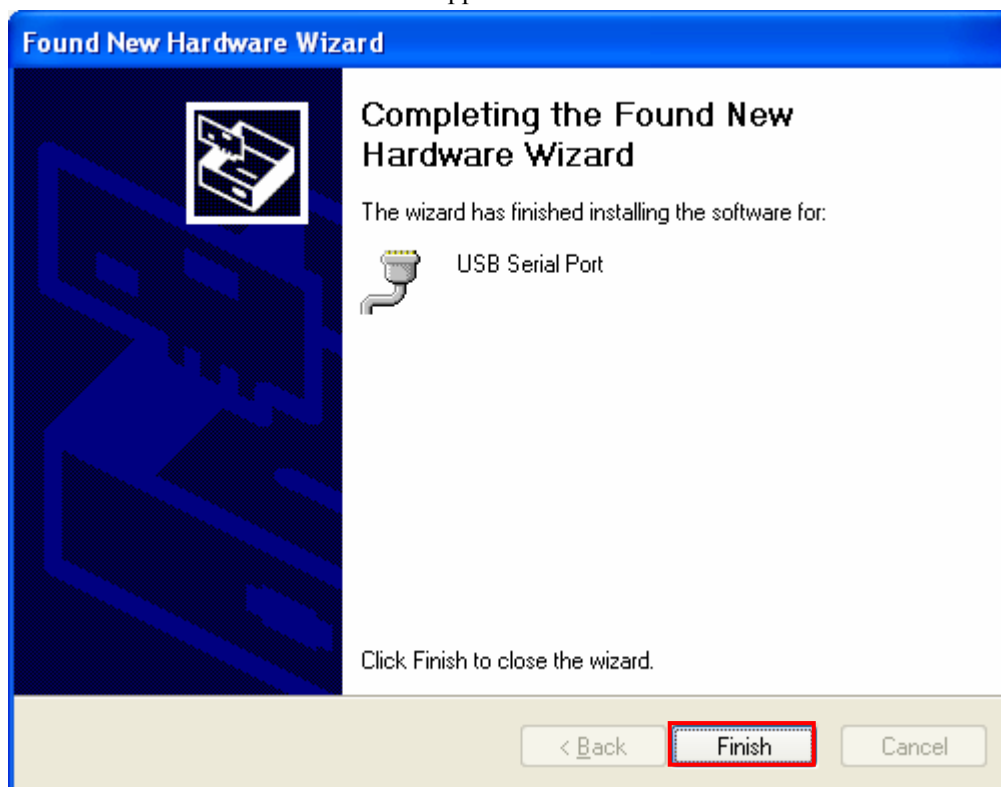


- ◆ Wait while installing the software.

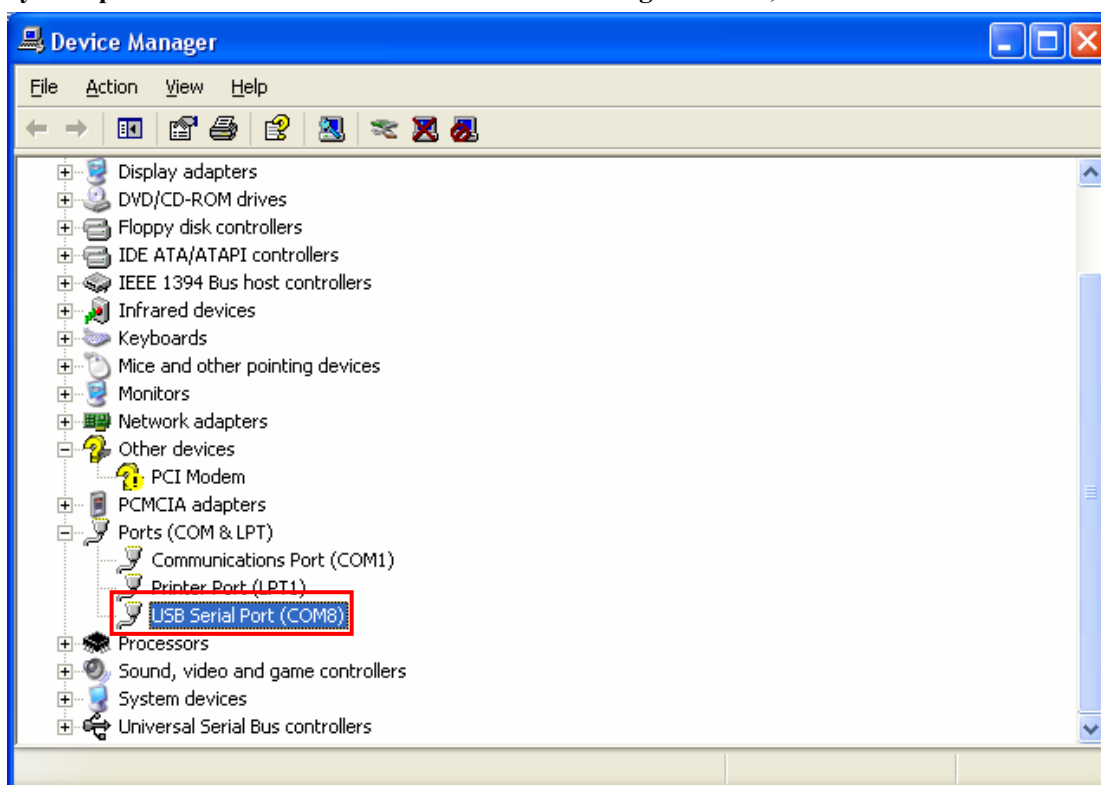




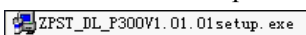
- ◆ The installation is finished. An interface appears as shown below:



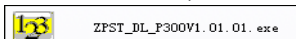
- ◆ Click **Finish**.
- ◆ Connect the data cable to the computer, and then observe the serial port through the path : **My Computer**→**Attribute**→**Hardware**→**Device Manager**→**Ports**, as shown below:



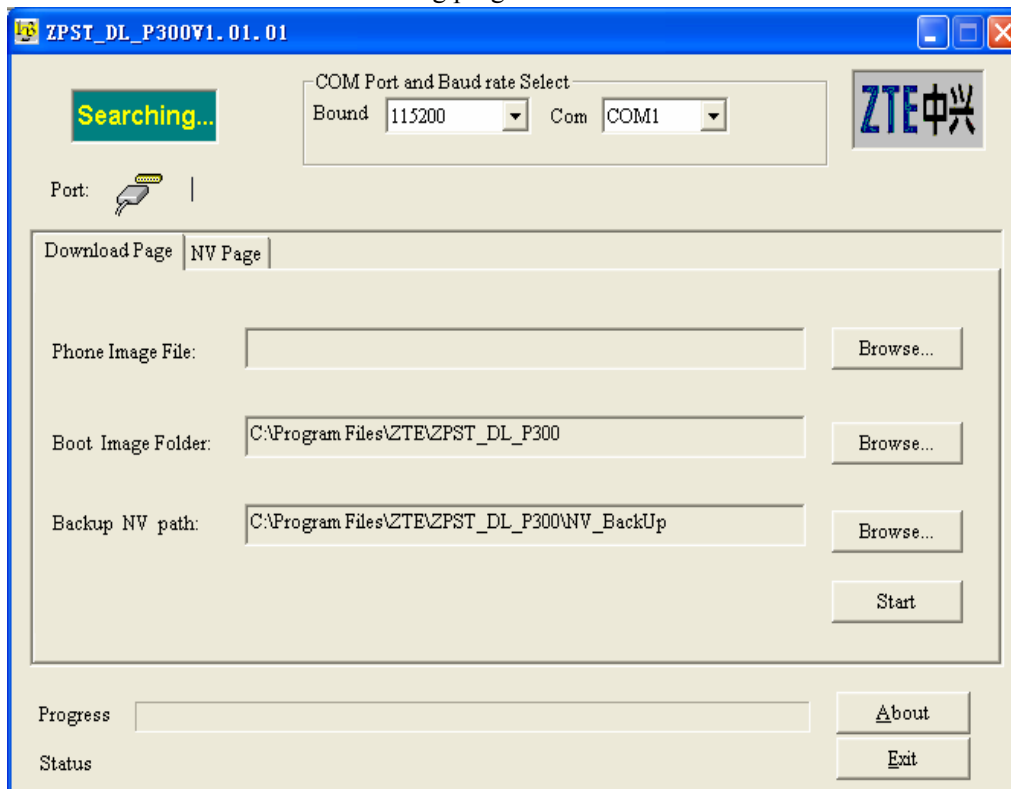
- ◆ Install the download platform, ZPST\_DL\_P300V1.01.01.exe.



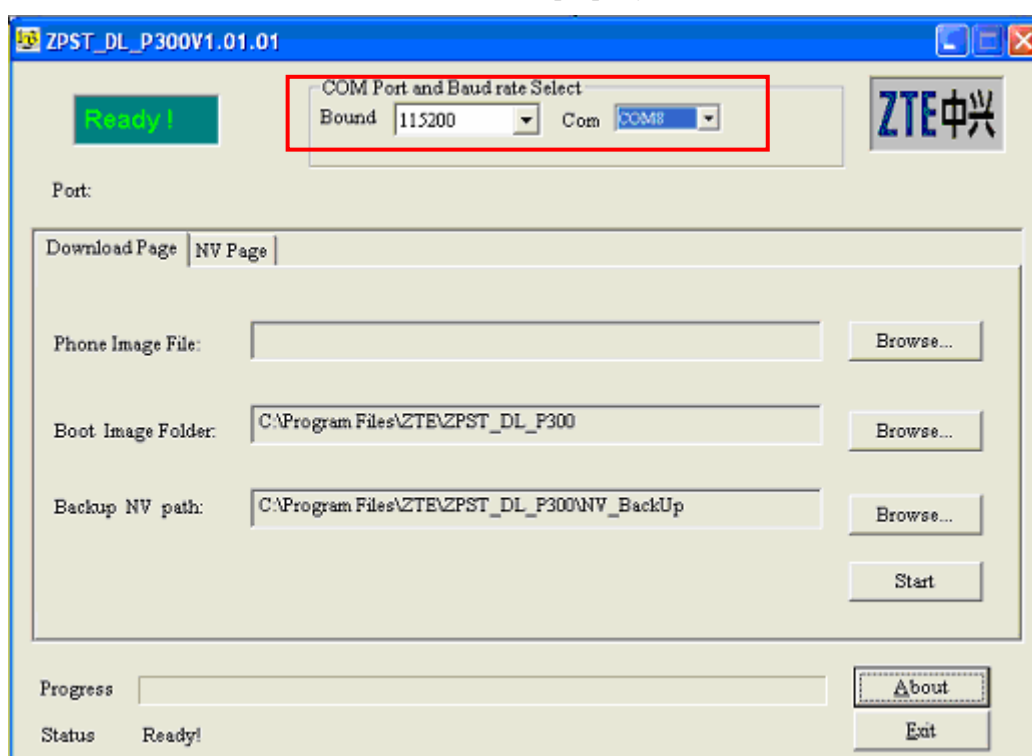
- ◆ After installation, double-click the shortcut icon on the desktop.



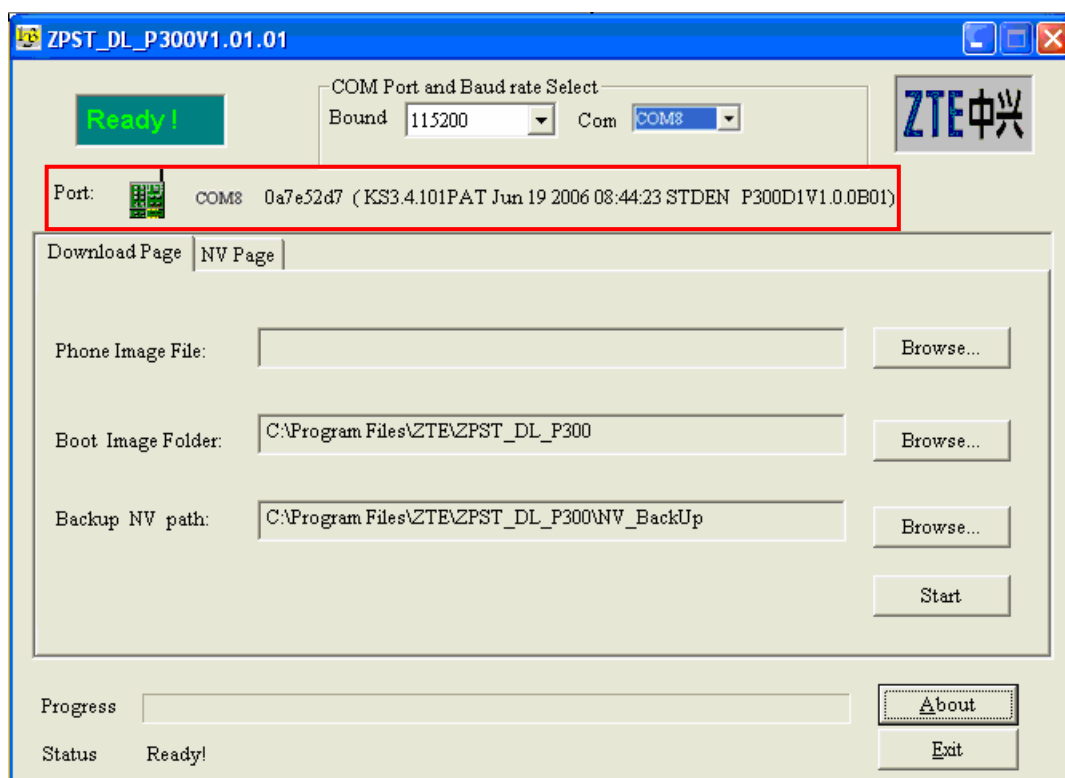
- ◆ The main interface of the downloading program is shown below:



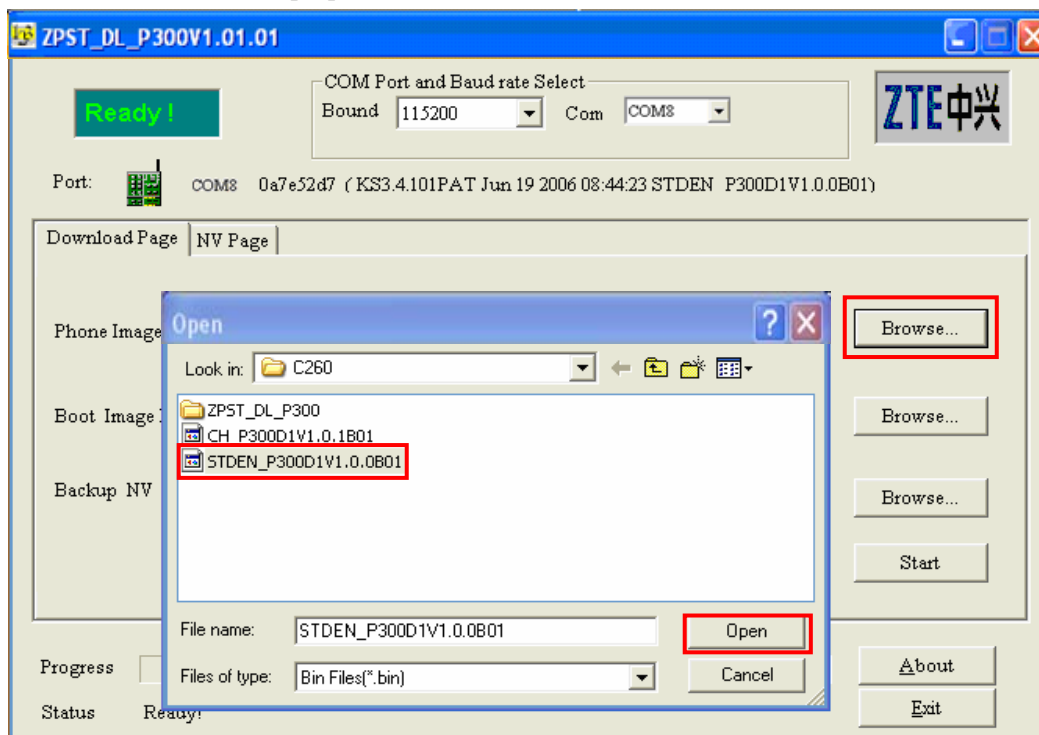
- ◆ Set the item **COM Port and Baud rate Select** properly, as shown below:



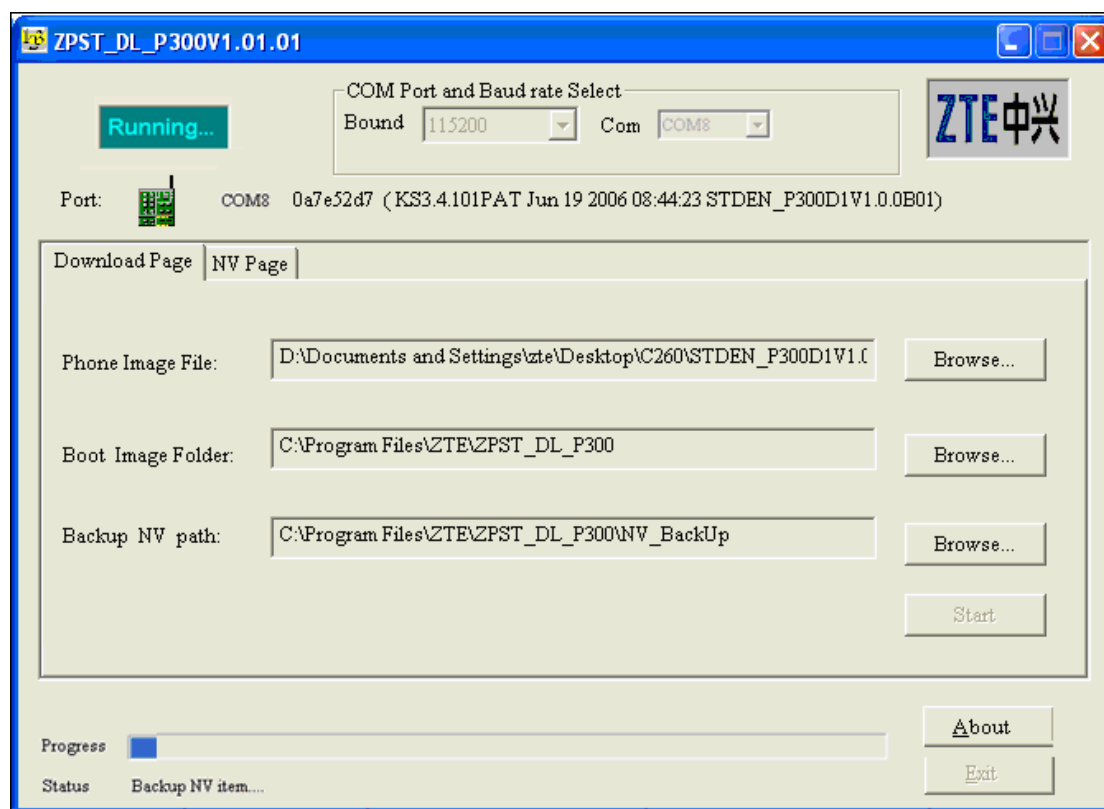
- ◆ Connect the handset. The original software version of the handset is automatically read, as shown below:



- ◆ Click **Browse** to select proper software version, as shown below:

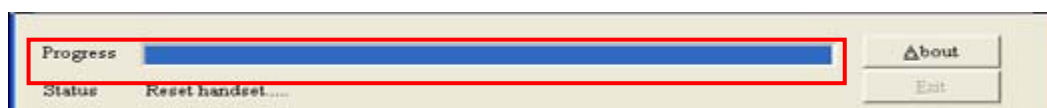


- ◆ Click **Start** to download the version, as shown below:

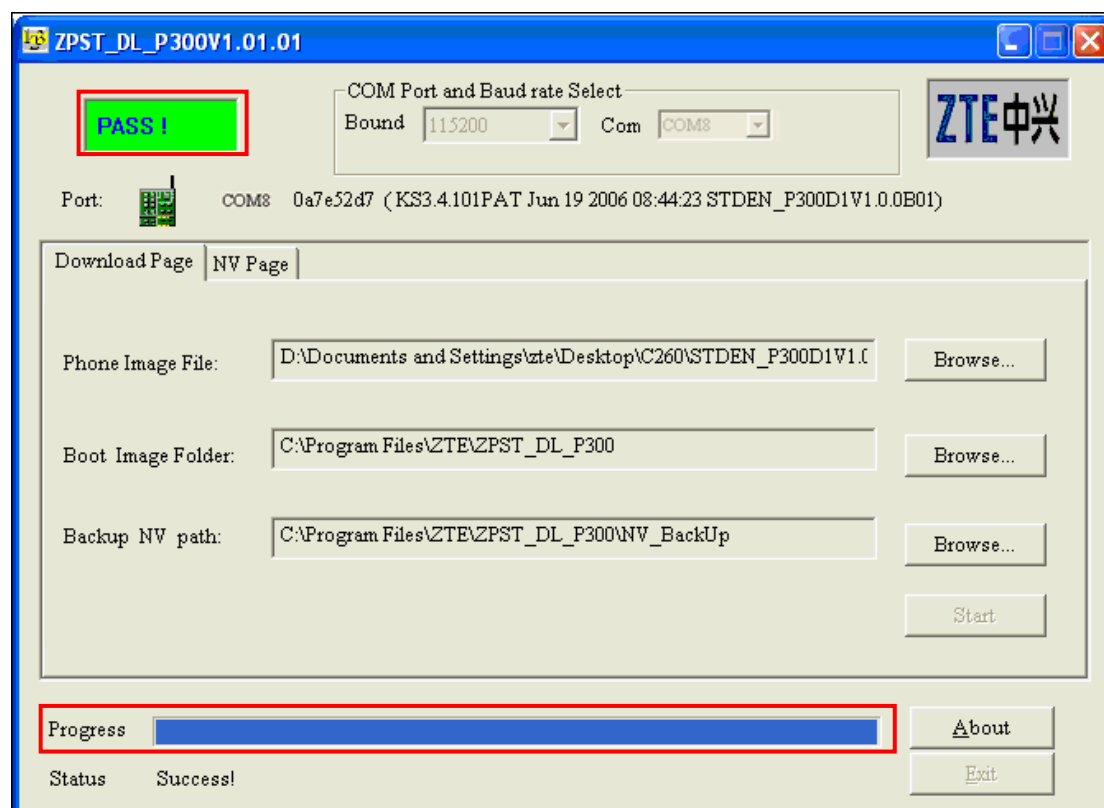


- ◆ download



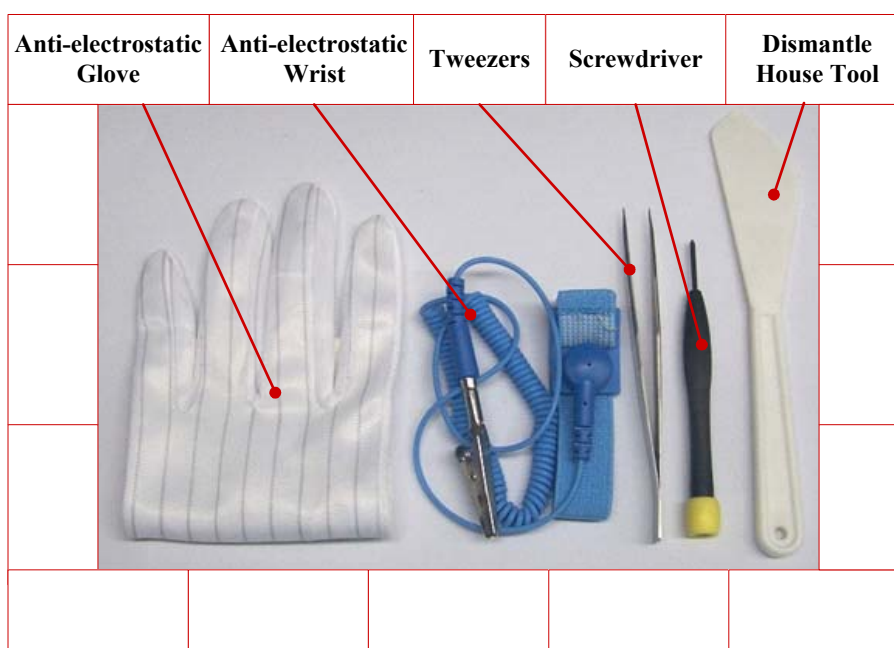


- ◆ The installation ends up, as shown below:



## 2.3 Disassembling Flow

- Tools Used to Disassemble



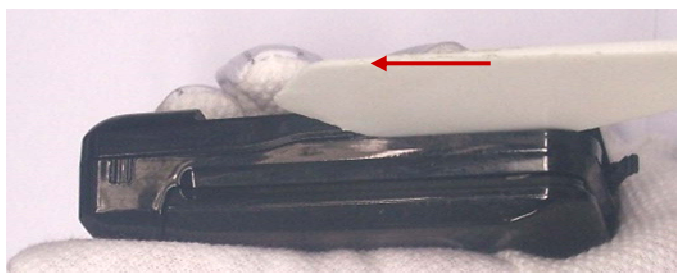
- Do as described to disassemble the mobile phone.
- Take out the battery carefully. Pay attention to the touch point and the touch plate, as shown below:



- Notes: Positions of four screws are as shown below:



- Disassemble the upper and lower shells of the lower housing using the disassembly, paying attention to the locking positions, as shown below:

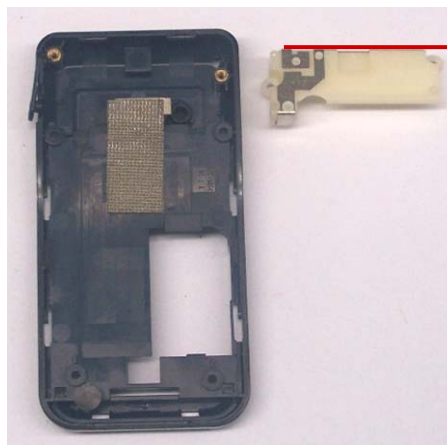




- Notes: The disassembled upper and lower shells of the lower housing are as shown below:



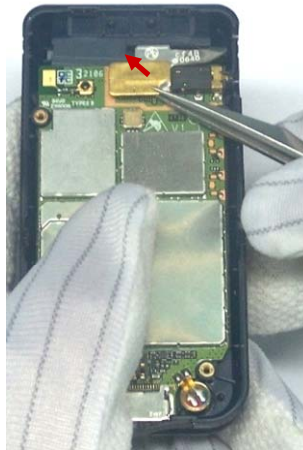
- Pay attention to the proper position of the built-in antenna.



Touch Plate of  
Antenna

- Take down FPC using the tweezers, as shown below:





- Disassemble the upper housing and the upper shell of the lower housing. Pay attention to the strength direction of the tweezers and try to push the pivot down in place.



- Exert strength along the direction of the arrow until a gap appears.



- The separated upper housing and the upper shell of the lower housing are as shown:





- Notes: Pay attention to the positions of two screws in the upper housing.



- Separate the upper shell and the lower shell of the upper housing use the disassembly. Pay attention to the locking positions.

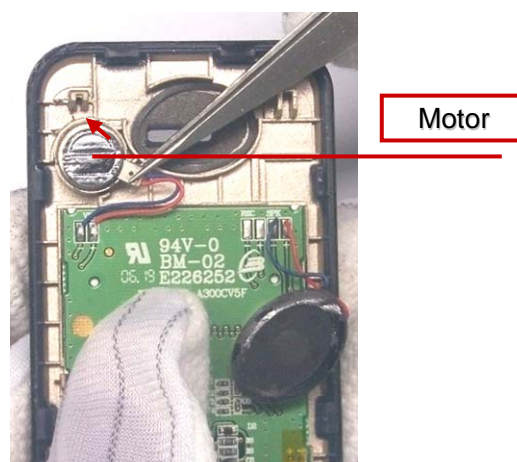
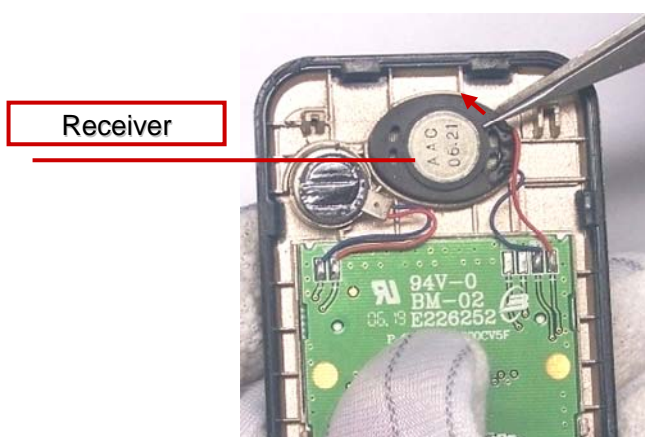




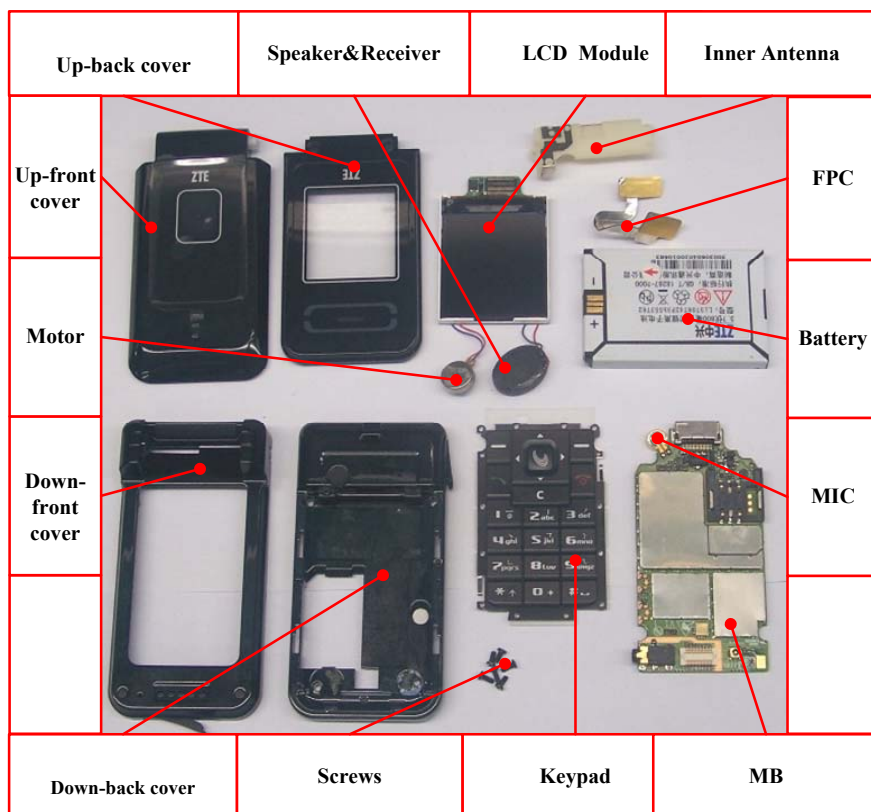
- Notes: The separated upper and lower shells of the upper housing are as shown:



- Take down the motor, receiver using tweezers. Pay attention to the proper positions of the motor and the receiver.

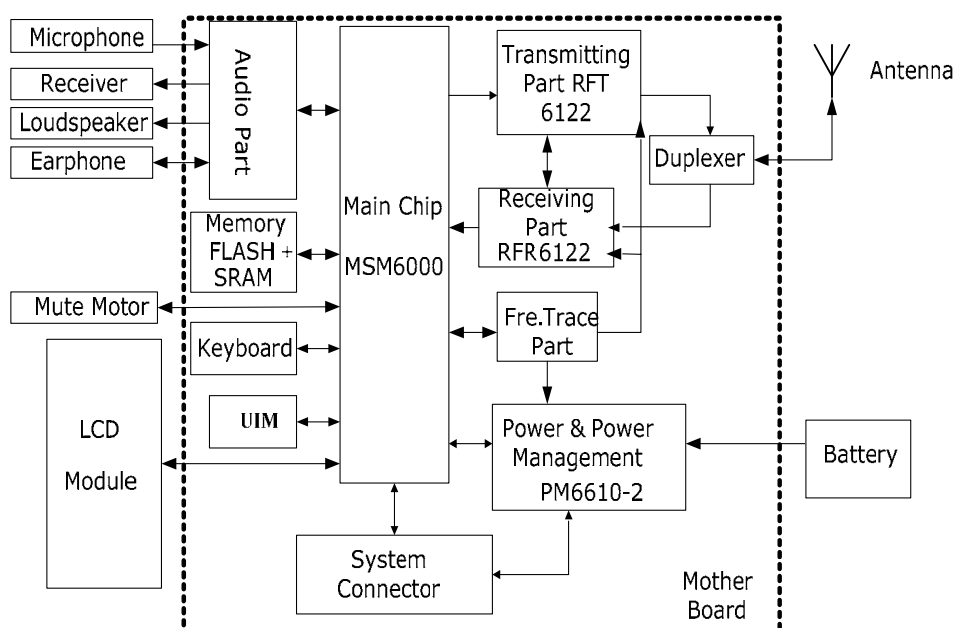


## 2.4 Components

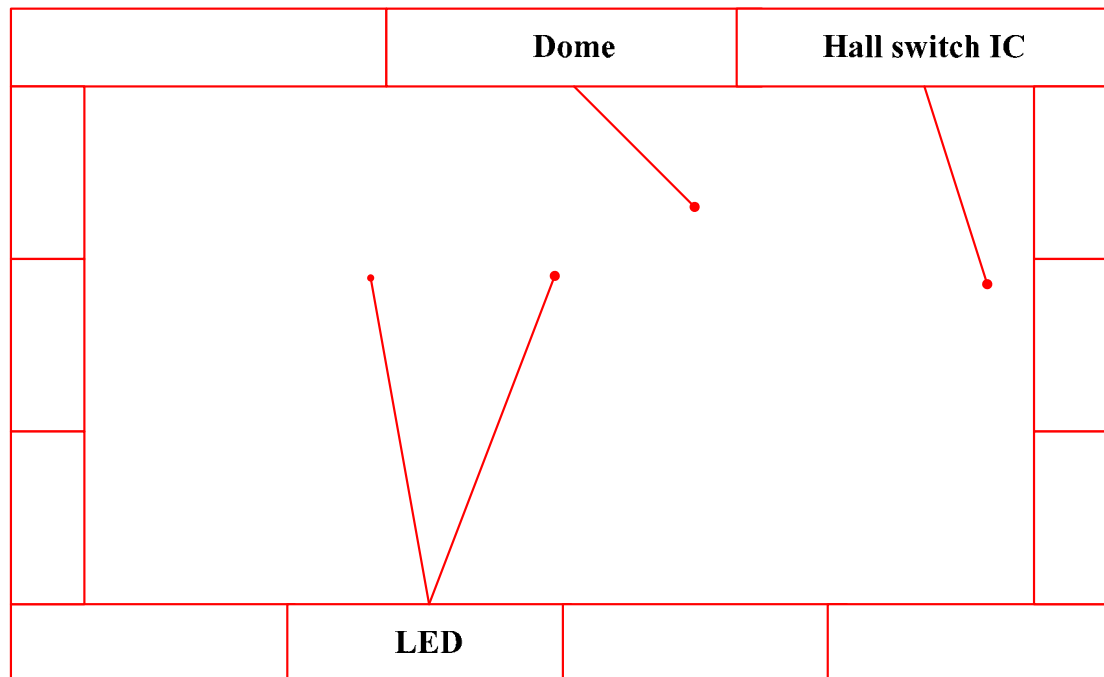


## 2.5 Block Diagram

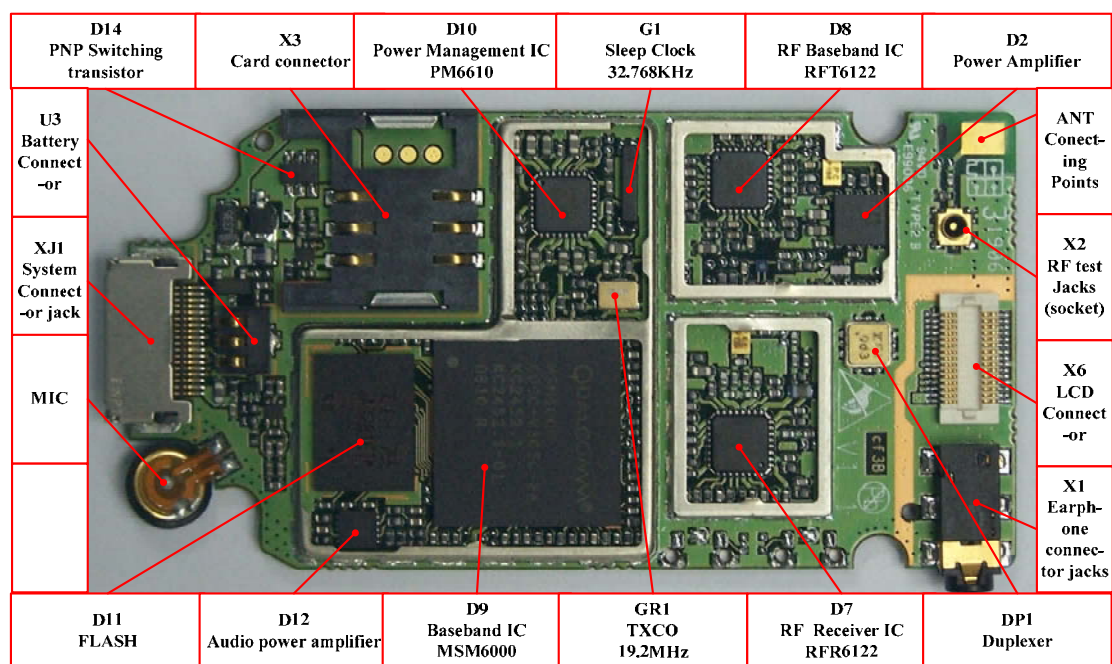
The principle of the mobile phone is as shown in the block diagram below:



## 2.6 Basic Device Distributing



MB Top Distributing



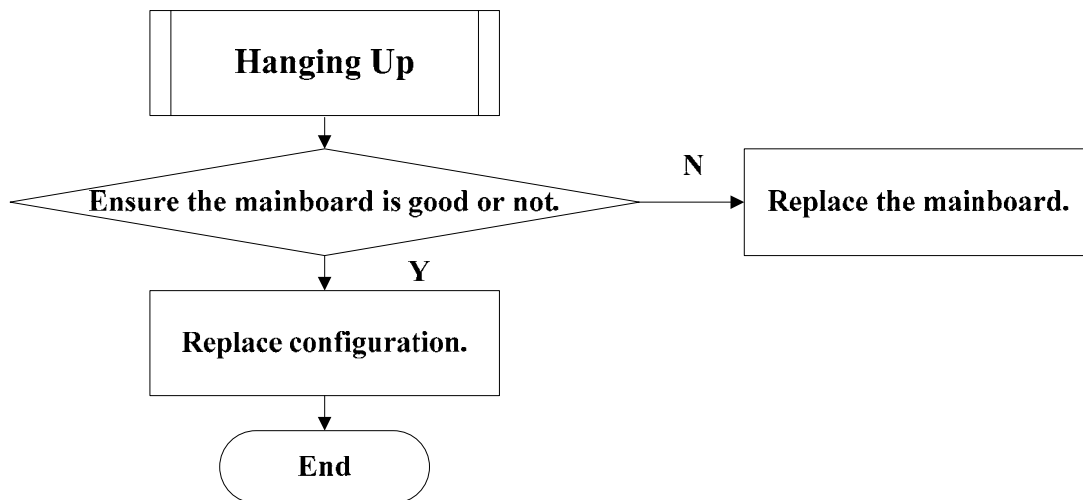
MB Bottom Distributing

### 3. Basic flow chart of familiar troubleshooting (Level 1)

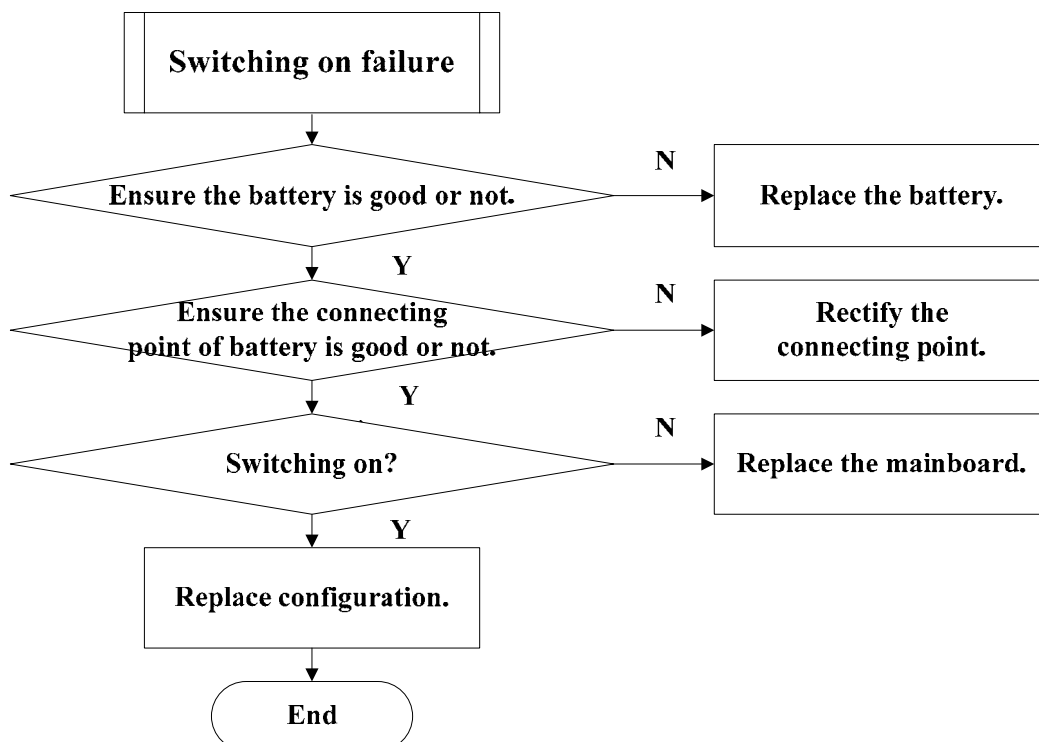
#### 3.1 Outer Parts Failure

Outer parts failure according to the dismantling flow.

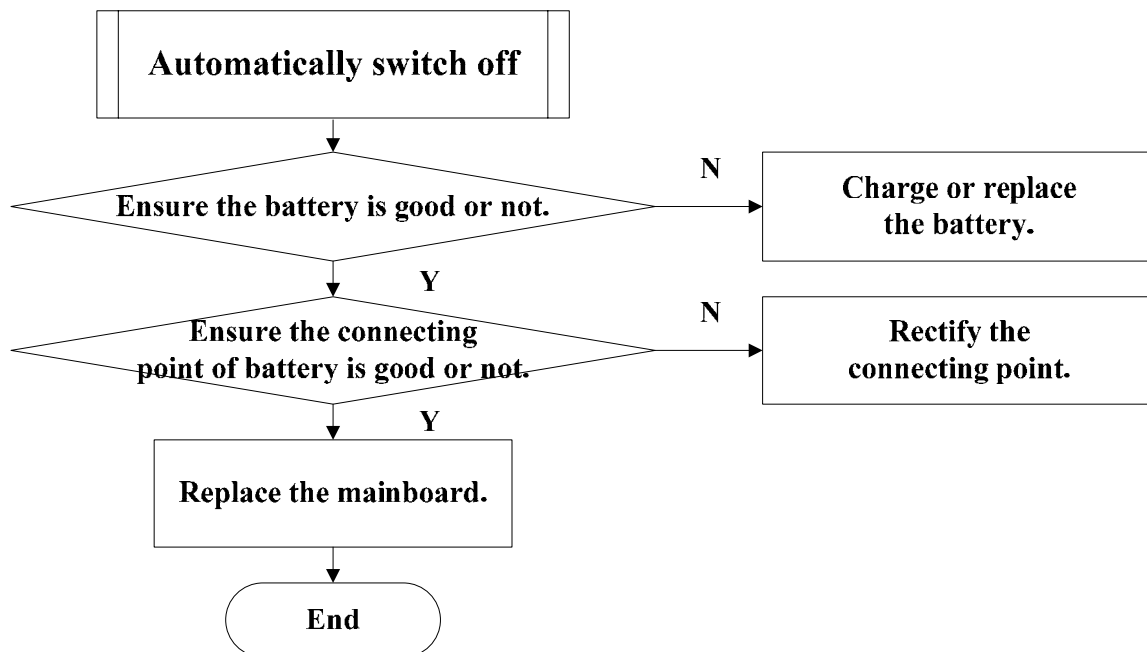
#### 3.2 Hanging up



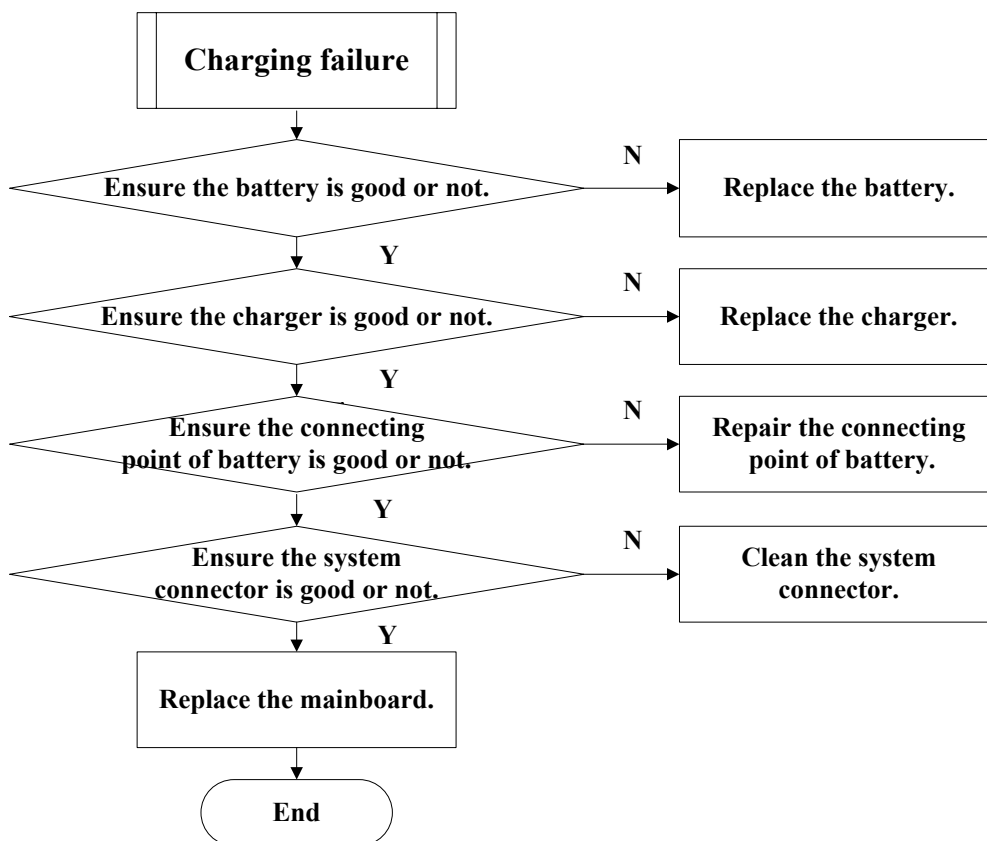
#### 3.3 Switching On Failure



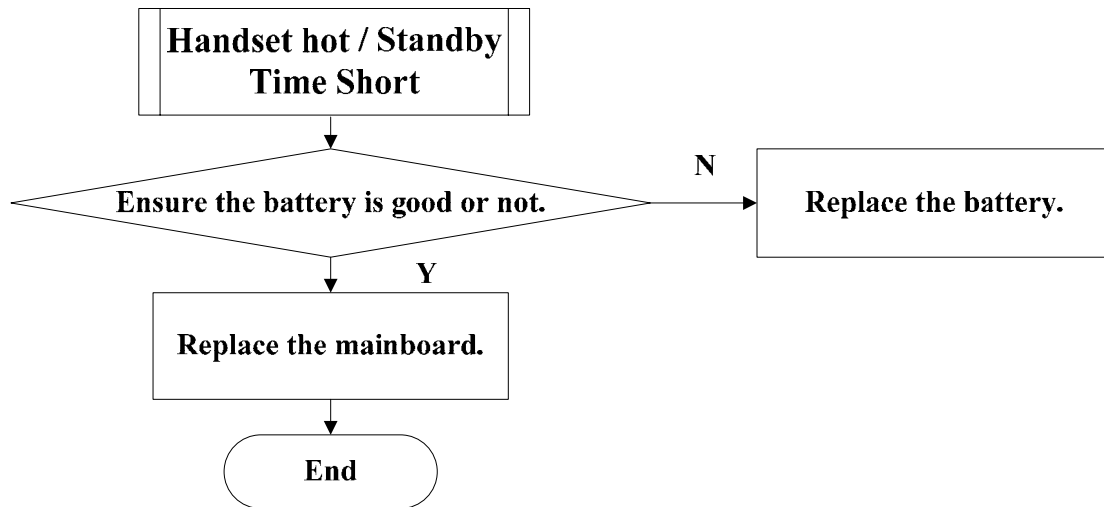
### 3.4 Automatically Switch Off



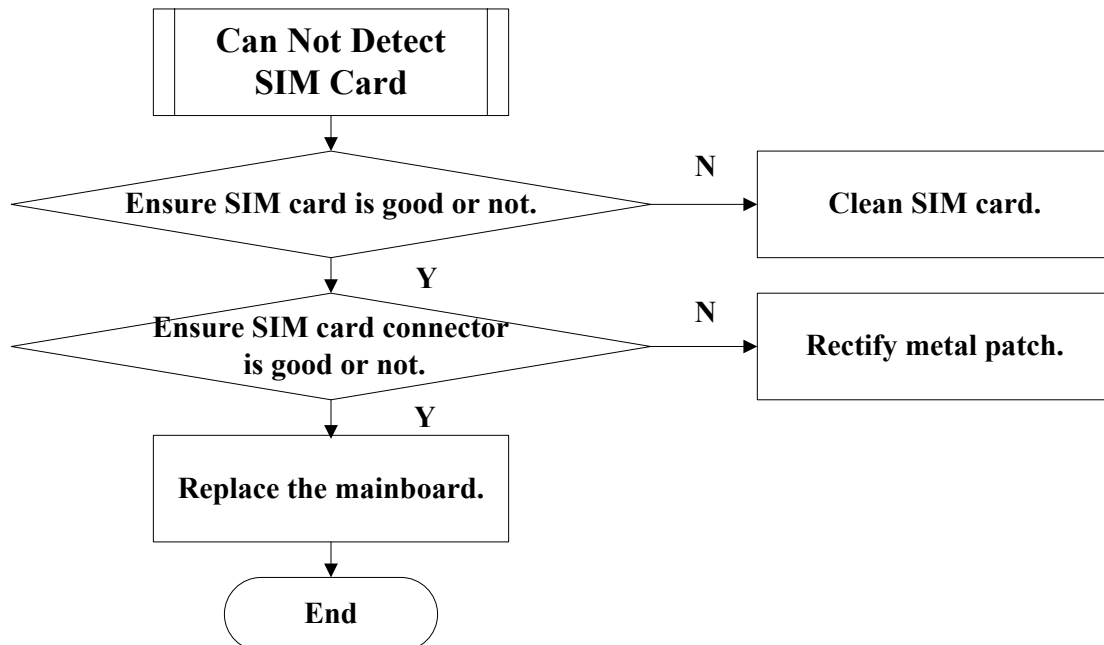
### 3.5 Charging Failure



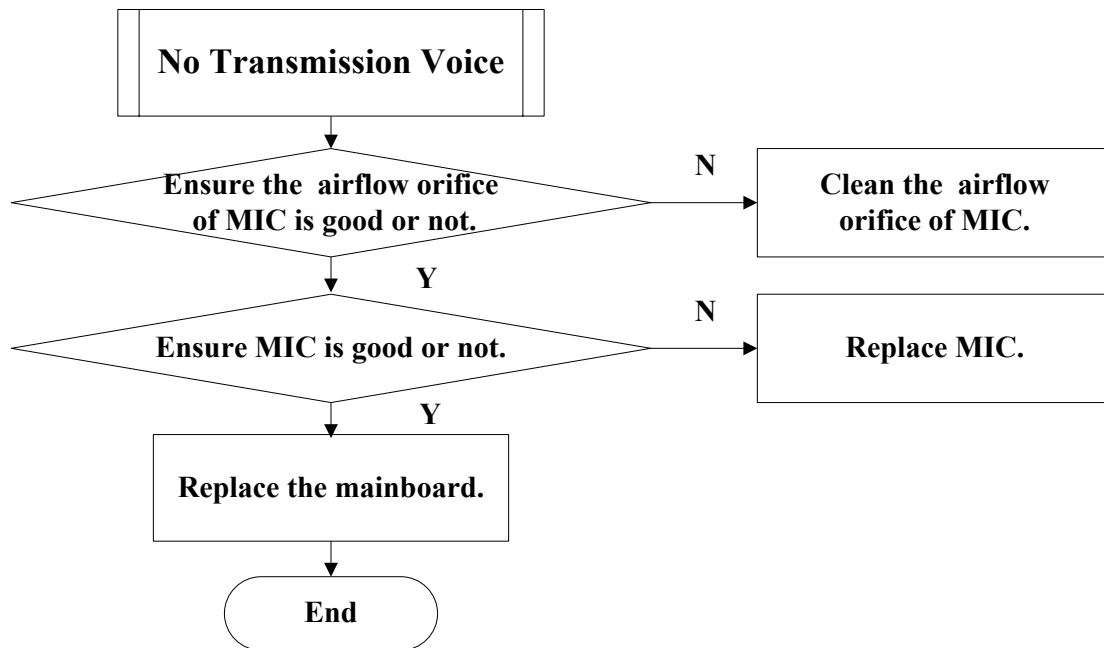
### 3.6 Handset Hot/Standby Time Short



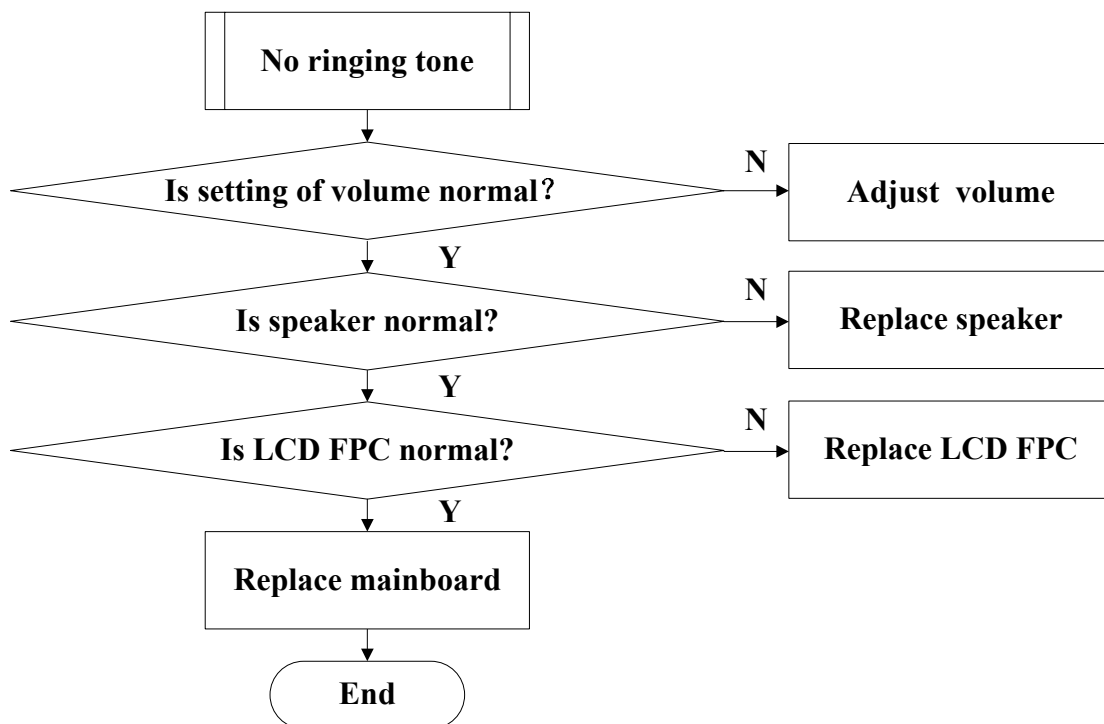
### 3.7 Can Not Detect SIM Card



### 3.8 No Transmission Voice

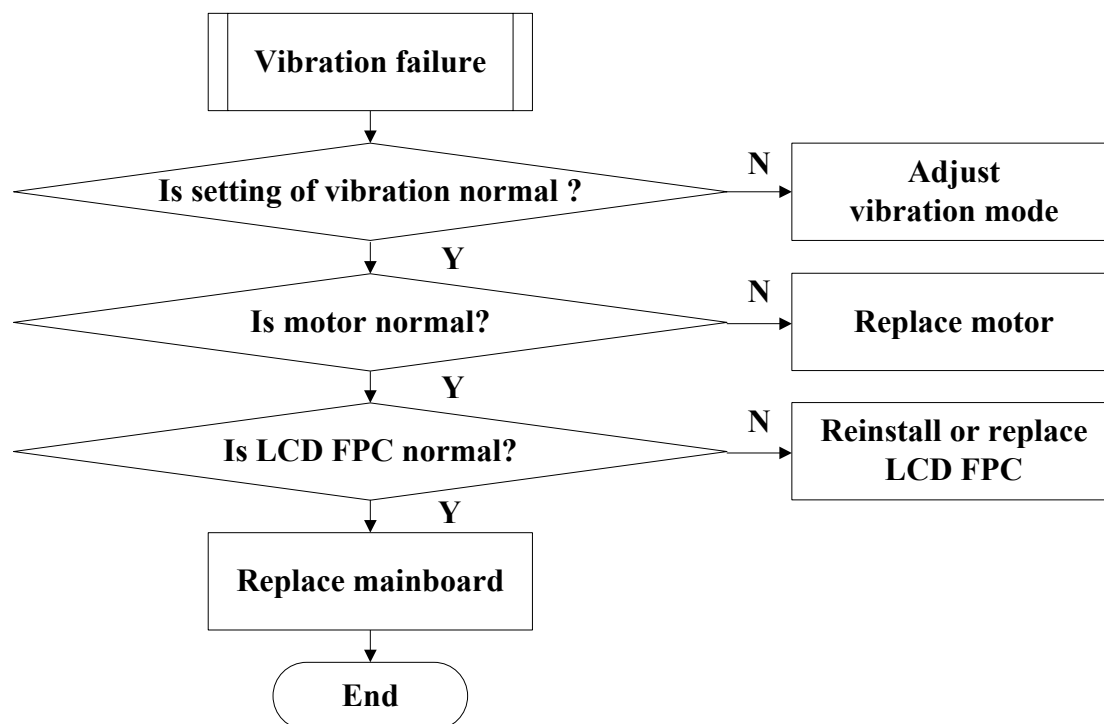


### 3.9 Mute Ring/Low Ring Volume

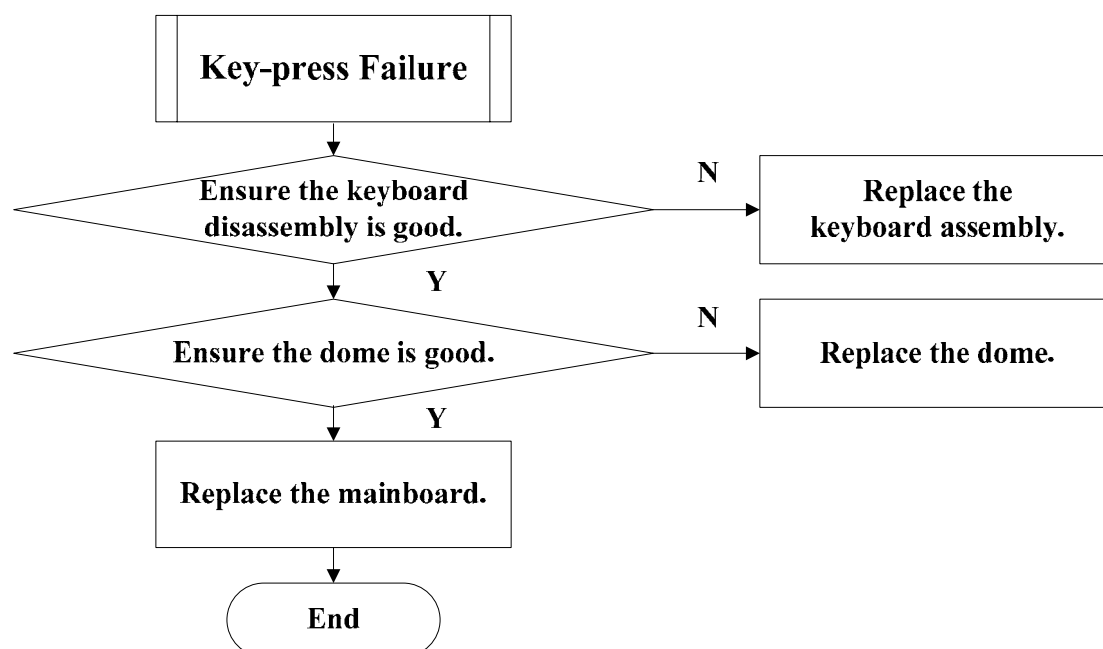




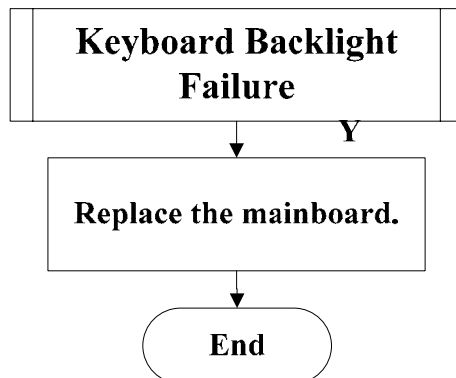
### 3.10 Vibration failure



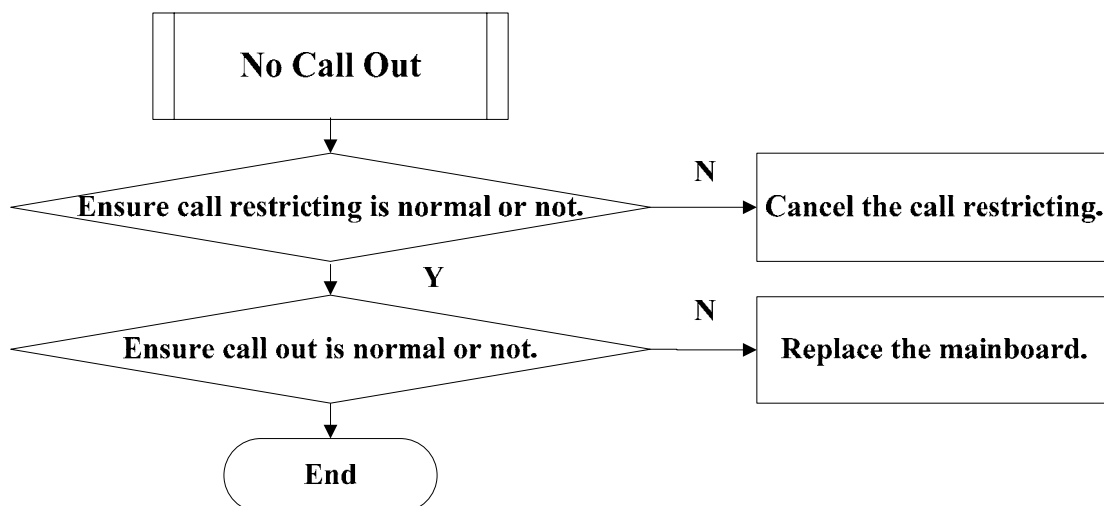
### 3.11 Key-press Failure



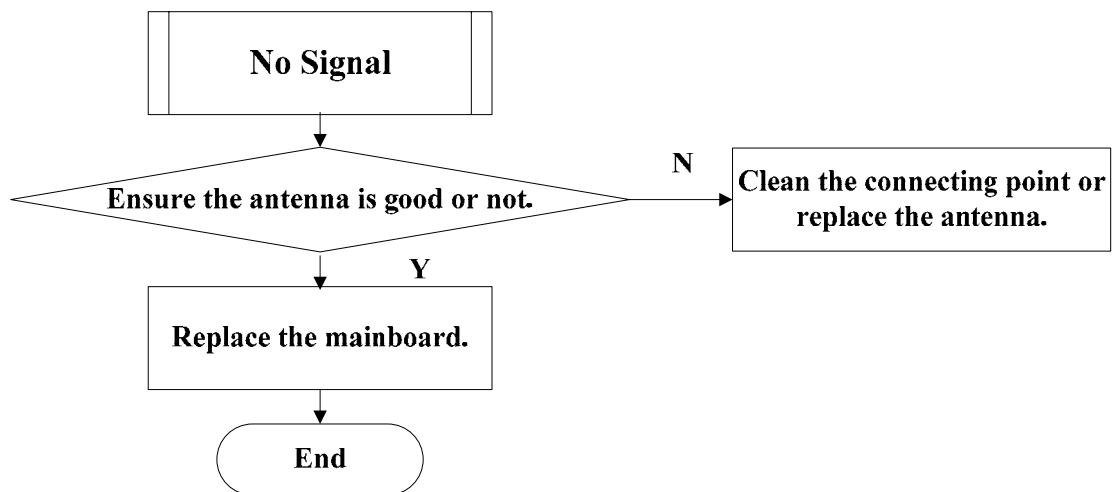
### 3.12 Keyboard Backlight Failure



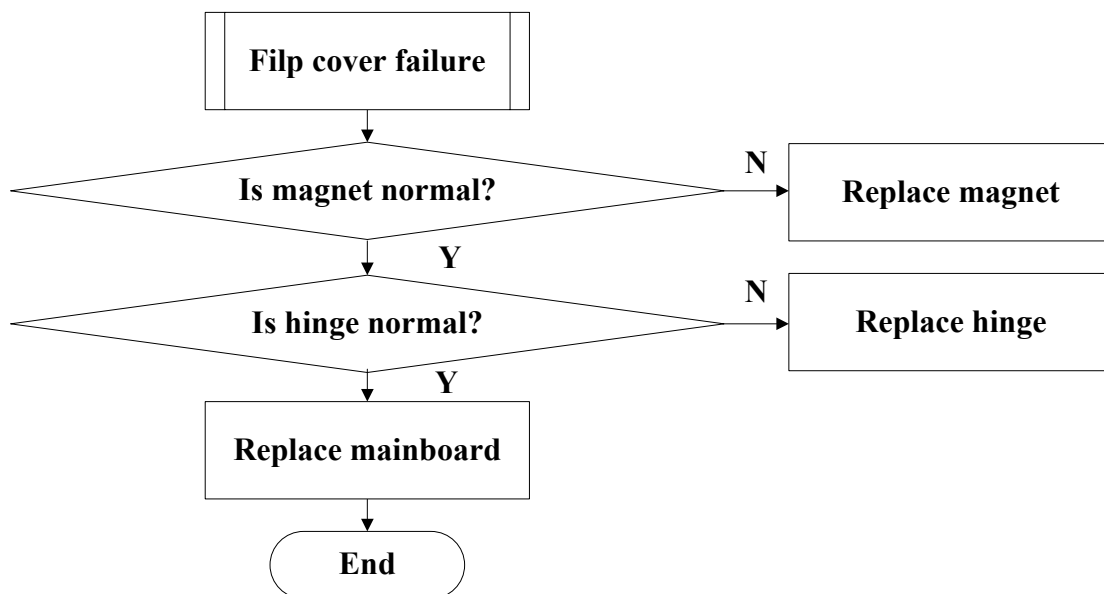
### 3.13 No Call Out



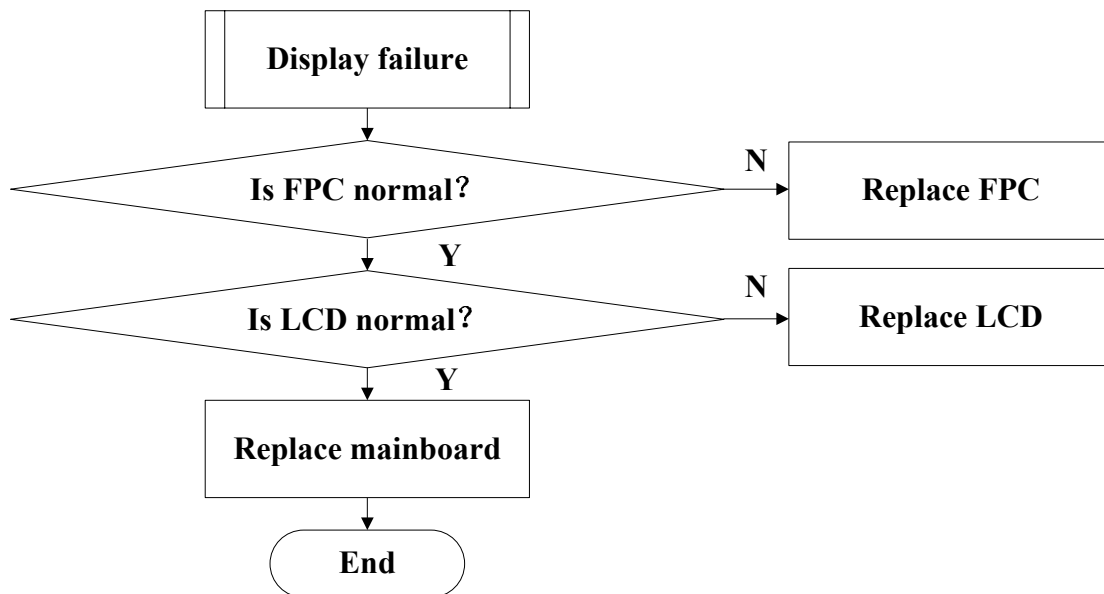
### 3.14 No Signal



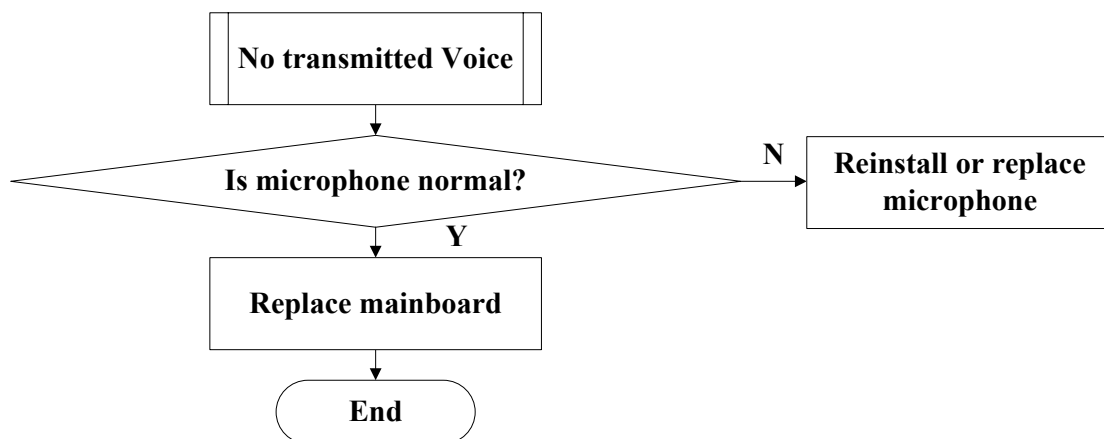
### 3.15 Filp cover failure



### 3.16 Display failure



### 3.17 No transmitted Voice



## 4. Parts List

C260 CDMA 1X Digital Mobile Phone After-sales Parts Lists		
No.	P/N	Part Name
1	055401001775	P300D1 Upper Shell Components of upper housing
2	055401001776	P300D1 Lower Shell Components of upper housing
3	055401001777	P300D1 Upper Shell Components of lower housing
4	055401001778	P300D1 Lower Shell Components of lower housing
5	055403100015	P300D1 Internal Mirror
6	055403100016	P300D1 External Mirror
7	055402000458	P300D1 Keyboard Keys
8	055402000461	P300D1 Vaulted Membrane
9	055402000459	P300D1 Coaxial Plug
10	056465000162	C900 Hinge
11	126752850003A	P300D1 CDMA 1X Digital Mobile Phone Board Material List
12	035030100057	A300C LCD Module
13	035040300026	Microphone
14	035070100033	Vibration Motor
15	035040100040	1318—L17 Integrated Receiver & Loudspeaker

Note: This is the main parts list. If you need a detail one, please apply it from local after-sales service manager.