

Modification Record

File No.	Version No.	Drafted	Date	Modification Reason	Main Modification Content
		Zhao Simin	2008-01-16	None	None
Notice: 1. Fill in the table while modify the document. 2. The modification reason and main modification content columns are filled in none during first document making.					

Contents

1. PRODUCT SUMMARY	2
1.1 STANDARD CONFIGURATION.....	2
1.2 SPECIFICATION.....	2
1.3 FUNCTIONS	2
1.4 INNER CODE	3
2. INNER STRUCTURE AND ELEMENTS.....	3
2.1 FUNCTION TEST	3
2.2 SOFTWARE DOWNLOAD	3
2.3 DISASSEMBLY FLOW	11
2.4 COMPOSING	16
2.5 BLOCK DIAGRAM	16
2.6 BASIC DEVICE DISTRIBUTING.....	17
3. TROUBLESHOOTING FLOW CHART (LEVEL 1).....	17
3.1 STRUCTURE FAILURE	17
3.2 SWITCH-ON FAILURE	18
3.3 HANG	18
3.4 AUTOMATICALLY SWITCHING OFF.....	18
3.5 CHARGE FAILURE	19
3.6 HANDSET OVERHEATED/LARGE POWER CONSUMPTION/SHORT STANDBY TIME	19
3.7 CARD UNIDENTIFIED	19
3.8 NO TRANSMITTED VOICE	20
3.9 NO RECEIVE VOICE/NOISE	20
3.10 NO RING TONE/LOW VOLUME.....	20
3.11 VIBRATION FAILURE	21
3.12 KEY-PRESS FAILURE	21
3.13 KEY-LIGHT FAILURE	21
3.14 NO SIGNAL	22
3.15 NO CALLS OUT.....	22
3.16 DISPLAY FAILURE	22
4. PARTS LIST	23

1. Product Summary

1.1 Standard Configuration

SN	Name	QTY
1	Handset	1
2	Li Battery	1
3	Charger	1
4	Earphone	1

1.2 Specification

- ◆ Network: CDMA
- ◆ Dimensions: 80mm*43mm*22mm
- ◆ Weight: about 85g (battery included)
- ◆ Continuous talk time: 2h – 4h
- ◆ Continuous standby time: 80h – 160h

1.3 Functions

- ◆ LCD: CSTN, 128*128 dots, 64k colors
- ◆ Support full screen graphics display
- ◆ Support caller and called function
- ◆ Support emergency call
- ◆ SMS receiving and sending
- ◆ Support OTASP function
- ◆ Support combination of handset and card or separation of handset and card; compatible with all hardware, and managing software separately according to software version
- ◆ The information of operator memorized in NV or UIM card is default display when you switch on the handset; switch-on animation is realized depending on the setting by the operator.
- ◆ For the version of separation of handset and card, the handset should display the prompt

information that user should insert UIM card while switched on before UIM card is not inserted.

- ◆ Caller and called number display
- ◆ Support DTMF dial
- ◆ Support 32-digit dial
- ◆ Support short-number dial in VPN business
- ◆ Name card capacity: 100 pieces
- ◆ For the version of separation of handset and card, support mutual transfer of phone book information with UIM card in one piece or batches
- ◆ Memorize the latest 10 out call number
- ◆ Memorize the latest 10 incoming call number
- ◆ Memorize the latest 10 missed call
- ◆ Memorize the latest talk time and accumulative talk time which can be displayed to the user

1.4 Inner Code

Inner Code	Outer Code
P300C3	C230

2. Inner Structure and Elements

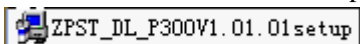
2.1 Function Test

Input *983*3641# and press * to begin function test mode, then test LCD → ring tone → vibration → key-press back light → red, green and blue indicating light → key-press (with hands) → press 'End' key → echo test → press 'End' key successively. Begin earphone test and press 'End' key, and the handset will automatically restart after test.

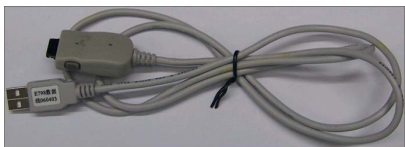
2.2 Software Download

- ◆ Software download instruction
Each handset to be repaired should be upgraded to the latest version, that is, each repaired handset should be in the latest version.

- ◆ Install download platform
ZPST_DL_P300V1.01.01setup

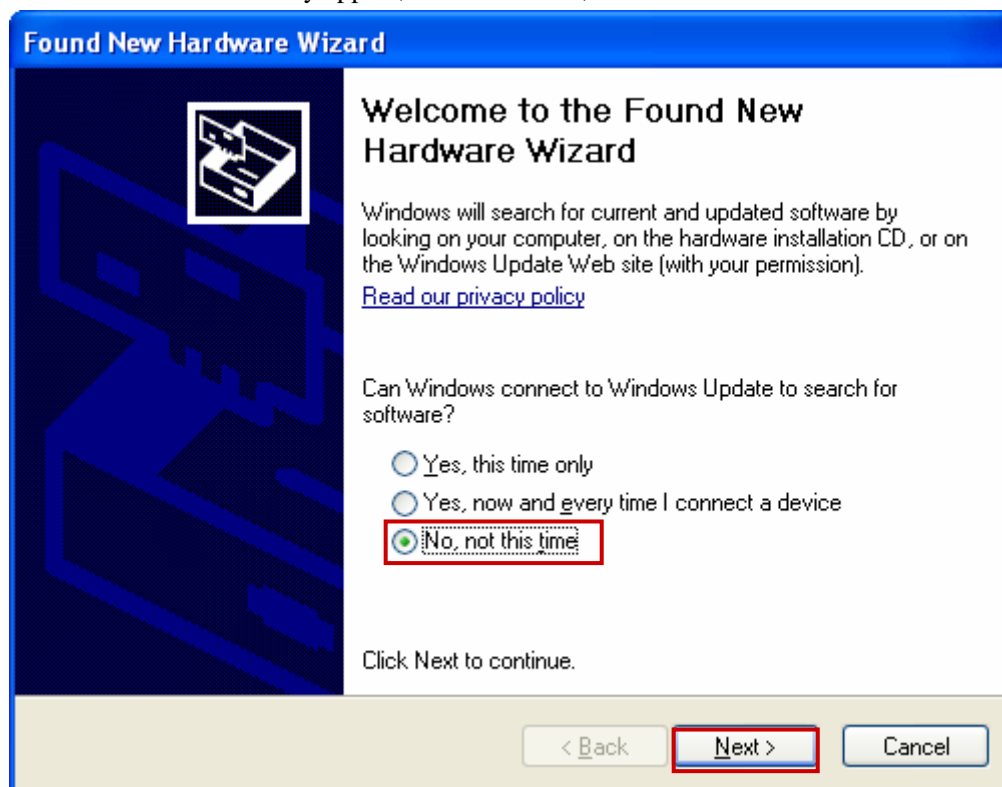


- ◆ Install driver (the driver program of E798 data cable)
E798 USB download cable (code: ISO11259)

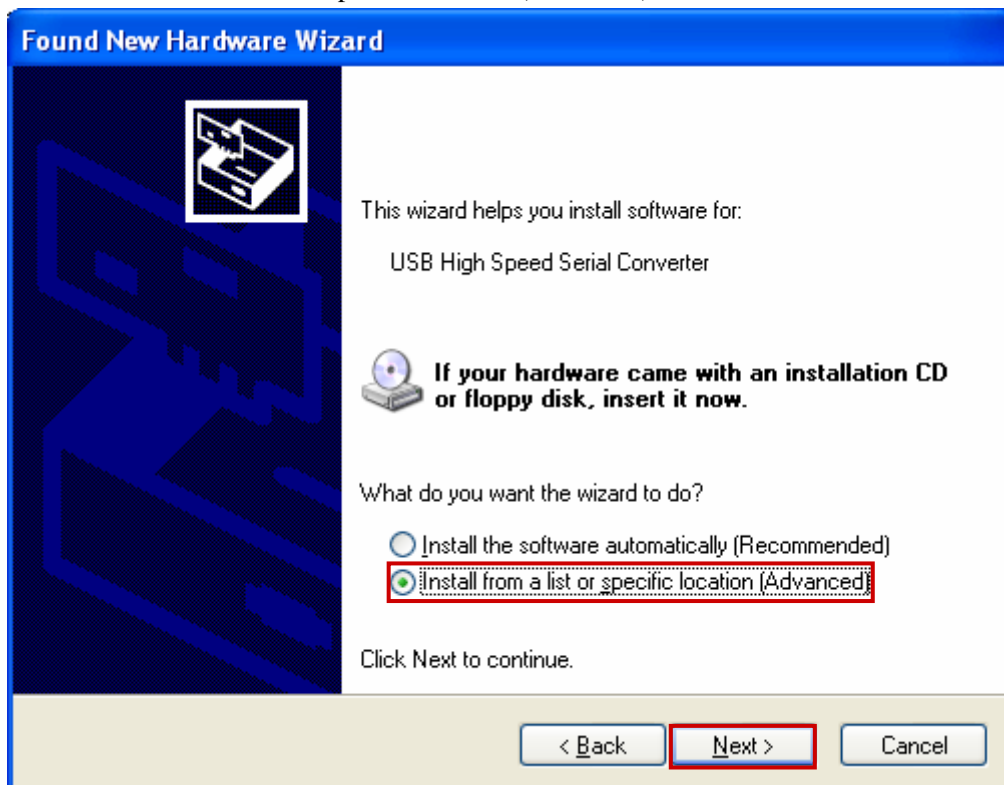


Driver installation

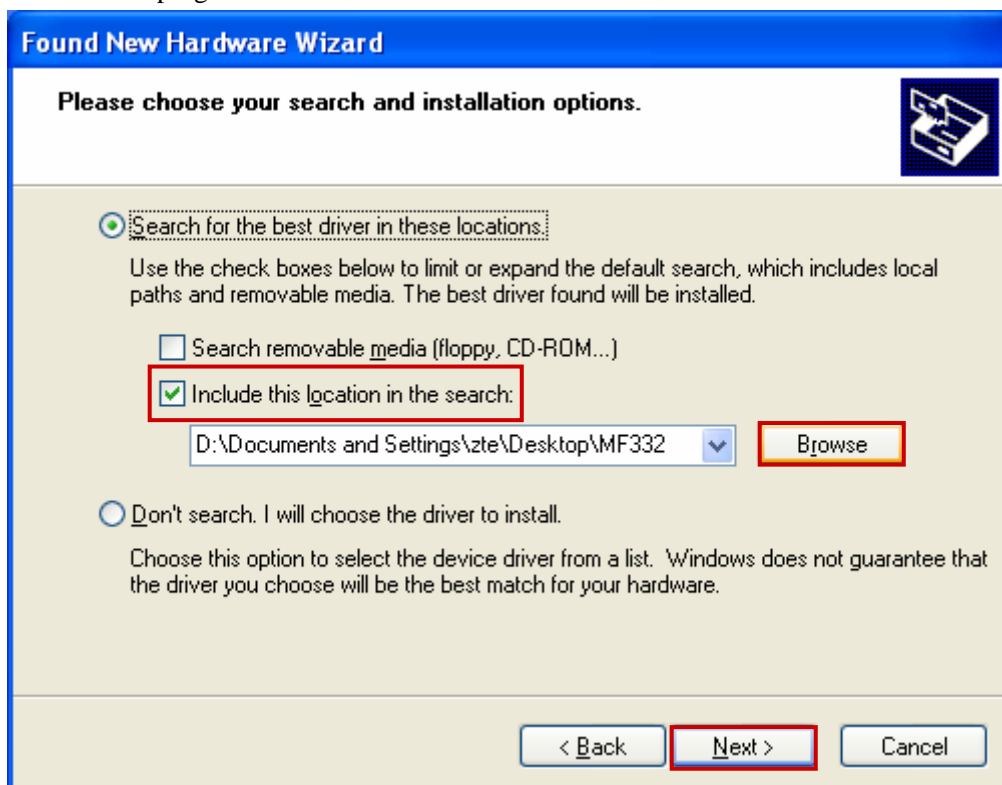
- ◆ Insert the data cable into the USB port of computer, and the following driver installation interface will automatically appear, then select 'No, not this time' and click 'Next'



- ◆ Select 'Install from a list or specific location (Advanced)' and click 'Next'



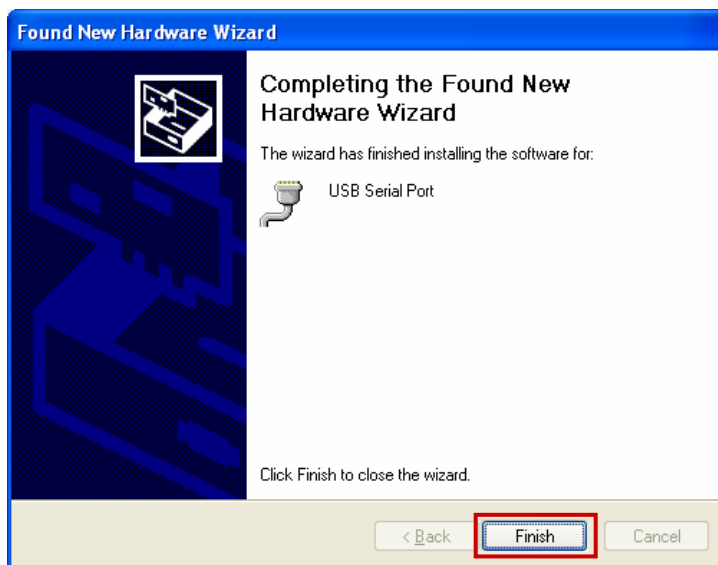
- ◆ Select driver program to be installed in 'Browse' and click 'Next'



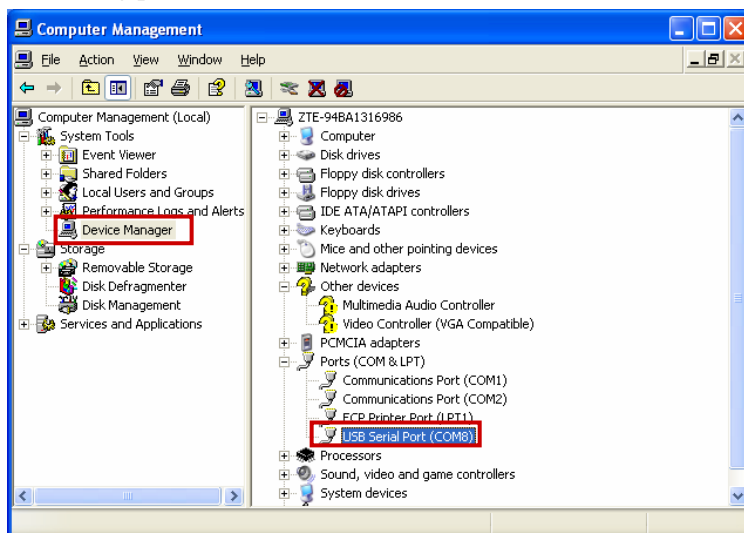
- ◆ Click 'Continue Anyway'



- ◆ Click 'Finish' after successful installation



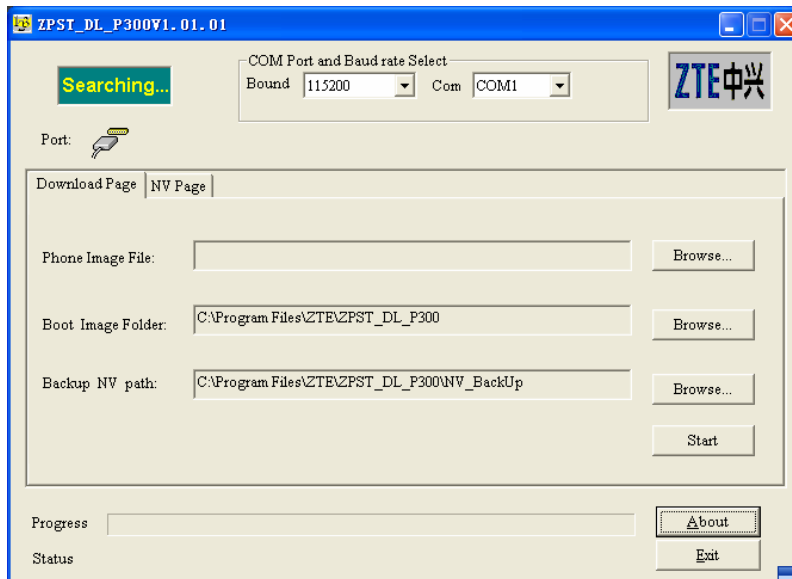
- ◆ Open 'My computer' → 'Management' → 'Device manager' → 'Port' and check the connecting port of download cable



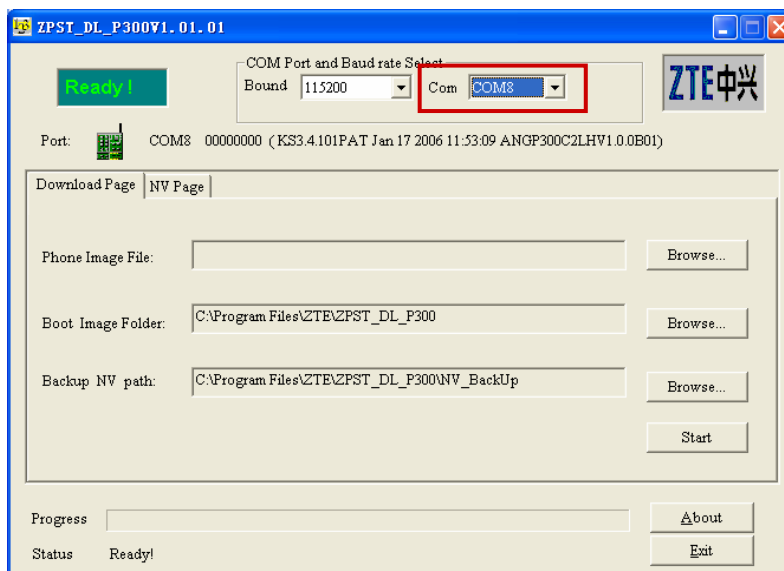
- ◆ Double click the shortcut icon on desktop



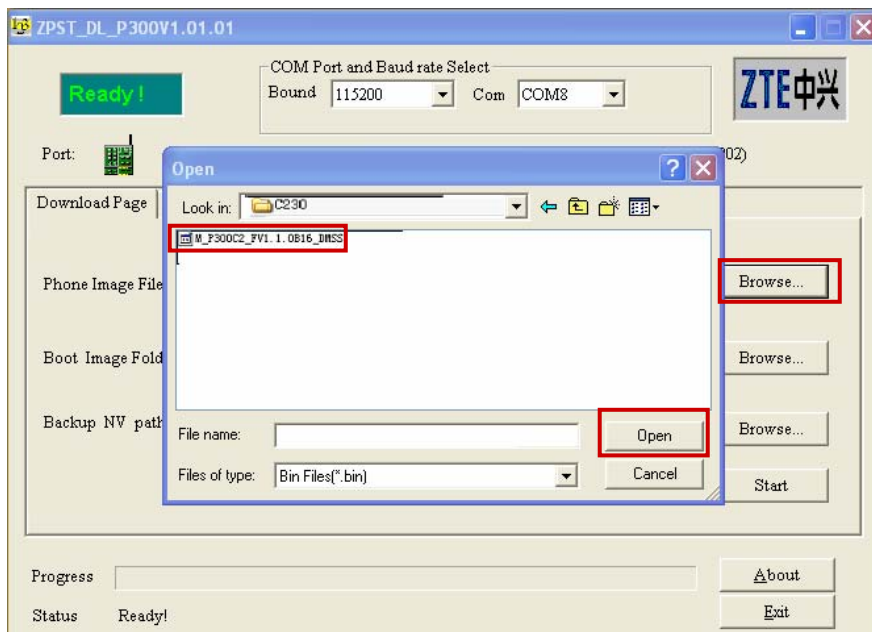
◆ Main download interface



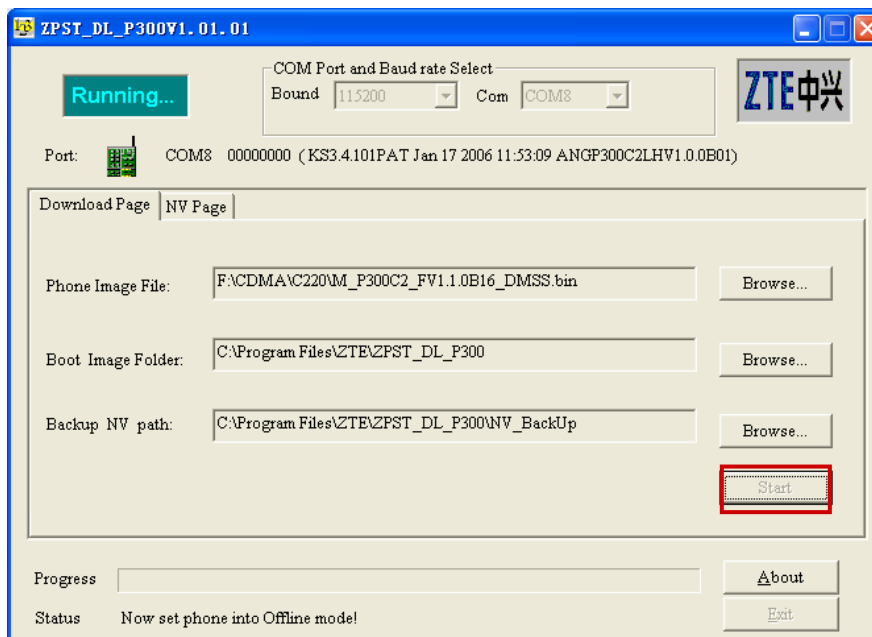
◆ Select 'COM8'



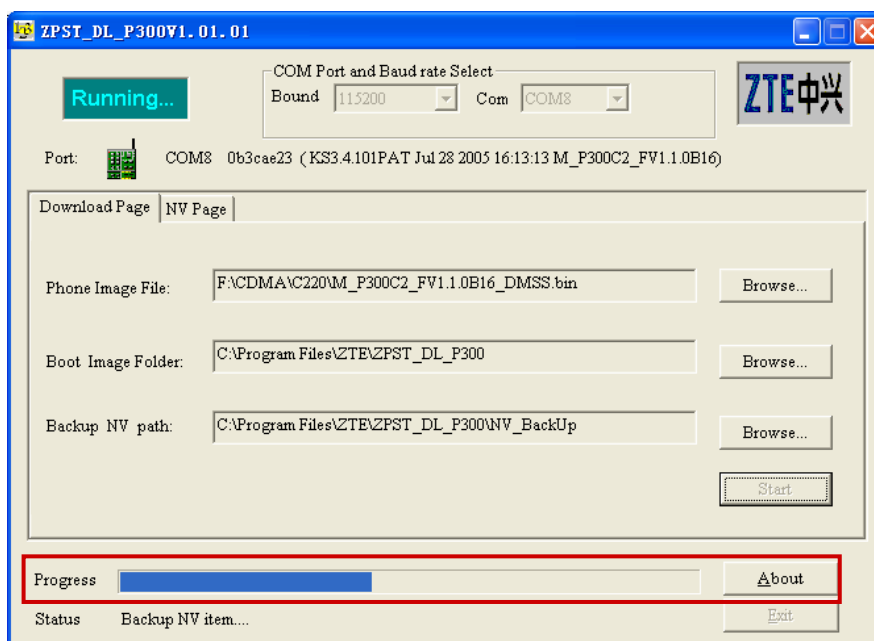
- ◆ Click 'Browse' to select the software version to be downloaded



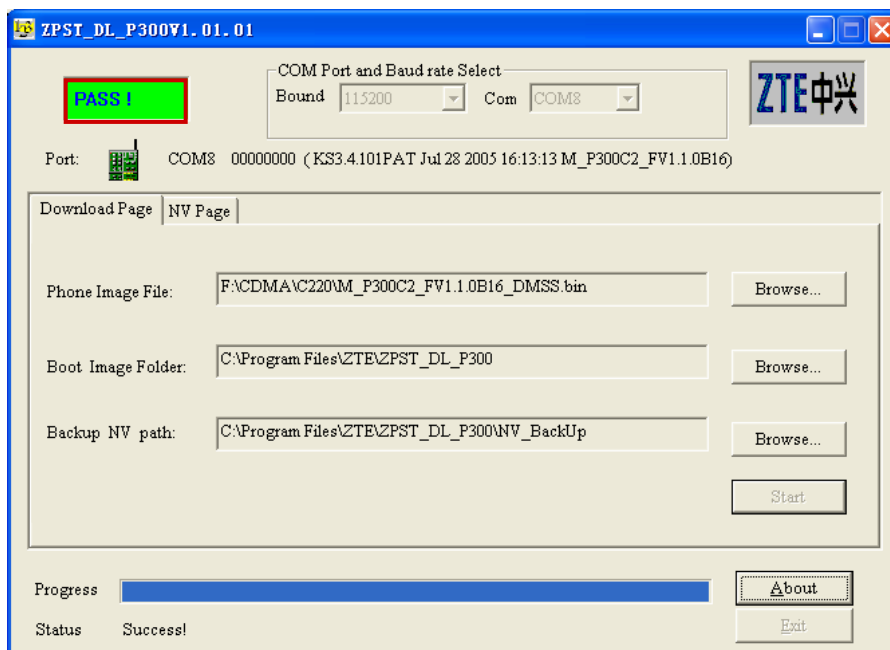
- ◆ Click 'Start' to download



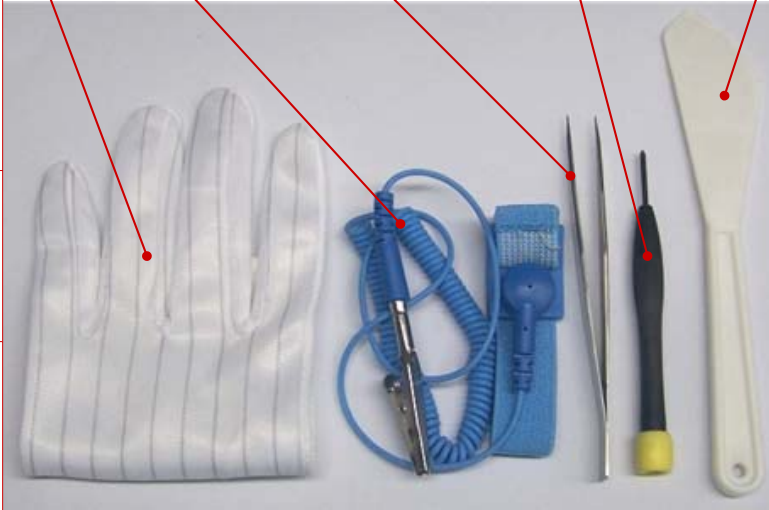
◆ Downloading



◆ Download success



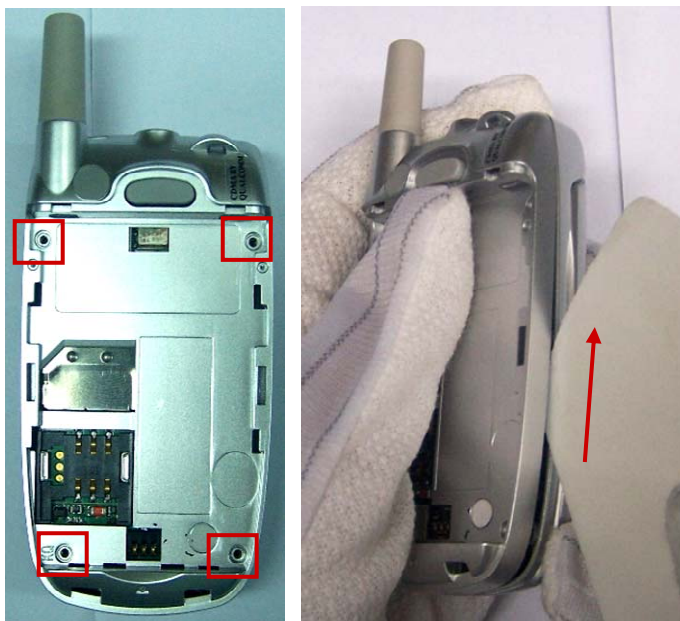
2.3 Disassembly Flow

Anti-electrostatic gloves	Anti-electrostatic wrist	Tweezers	Screwdriver	Dismantle house tool
				

- ◆ Take out the battery.



- ◆ Pay attention to the positions of four screws and separate the back cover with dismantle house tool.



- ◆ Separate the front and back covers and pay attention to the locks.



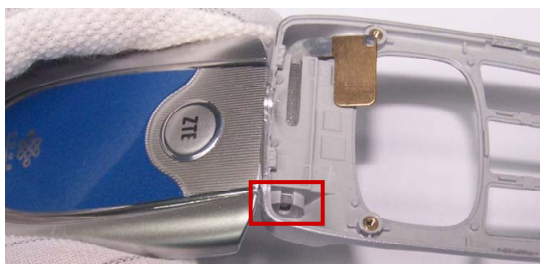
- ◆ Pay attention to the connecting points of antenna.



- ◆ Take off FPC with tweezers and pay attention to the connecting positions.



- ◆ Separate the up cover and down front cover.
Pay attention to the direction of tweezers and press roller in place.



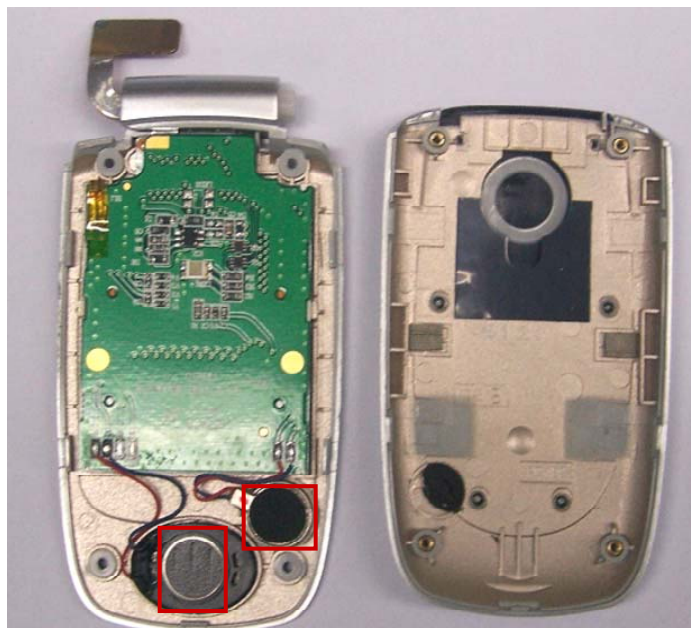
- ◆ Take out the four screws of up flip cover and separate them with dismantle house tool. Pay attention to screw holes.



- ◆ Pay attention to the locks.



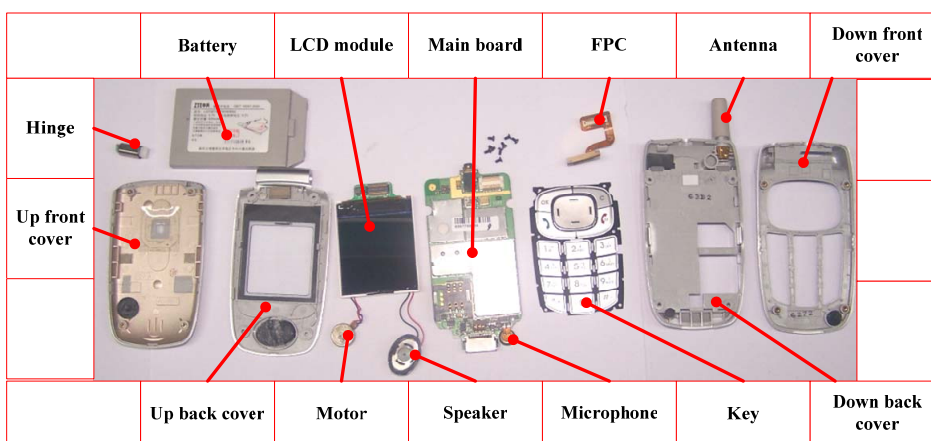
- ◆ Pay attention to the installing position of motor and speaker.



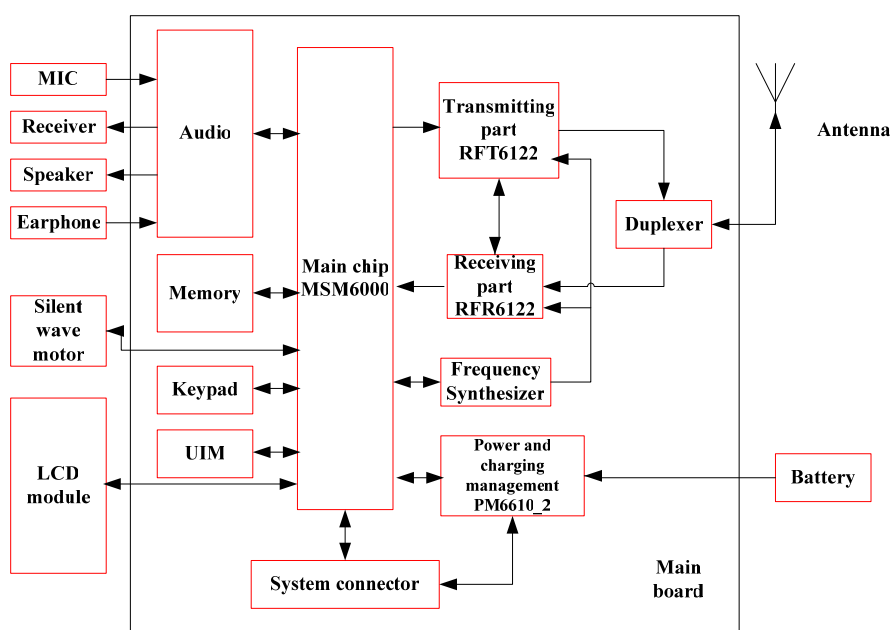
- ◆ Take out LCD and FPC with tweezers. Pay attention to the connecting way of LCD and FPC.



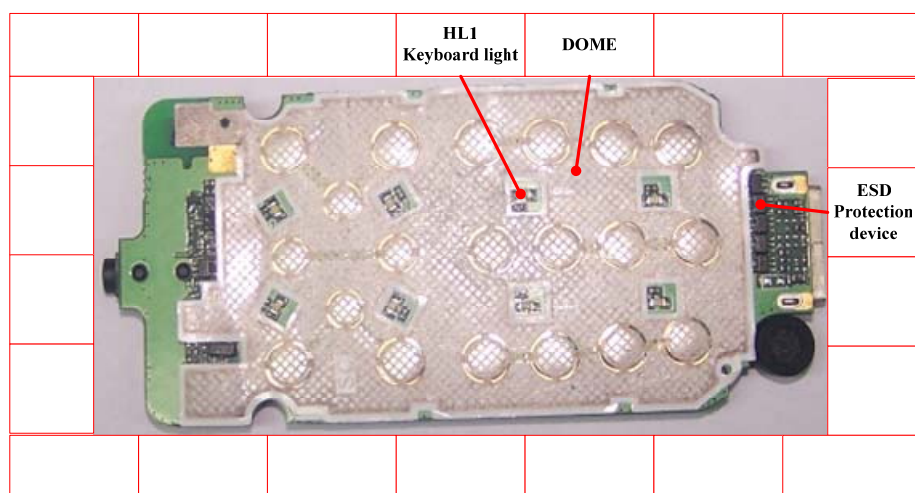
2.4 Composing



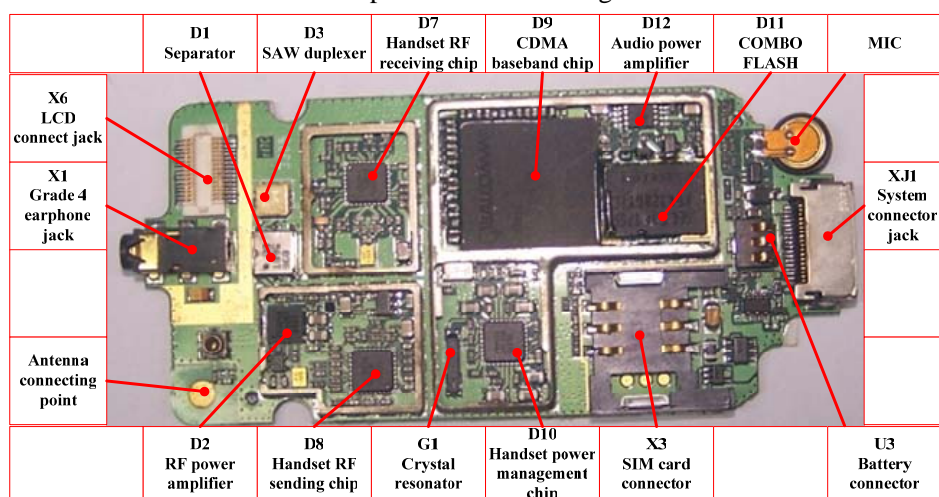
2.5 Block Diagram



2.6 Basic Device Distributing



Top Device Distributing



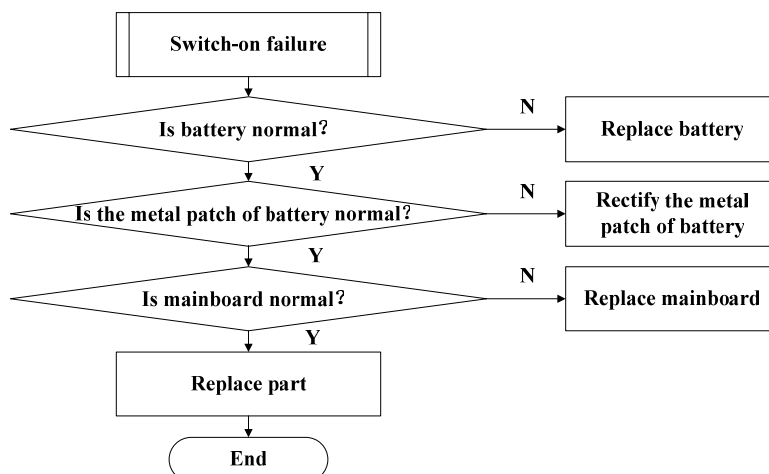
Bottom Device Distributing

3. Troubleshooting Flow Chart (Level 1)

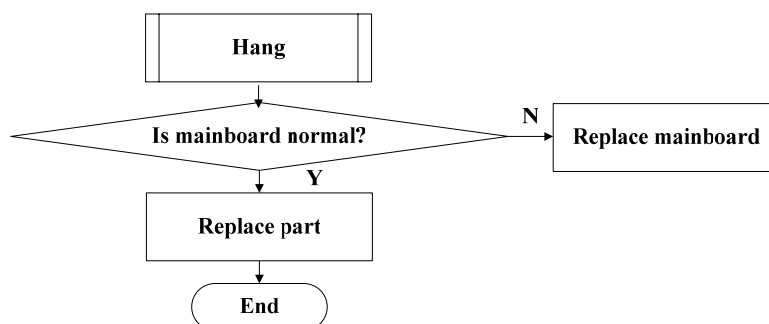
Structure Failure

For the structure failure, please make the corresponding replacement (refer to the section Disassembly Flow)

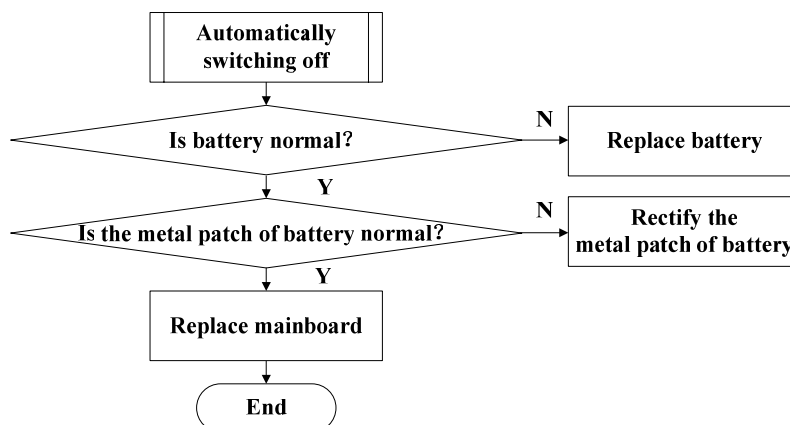
Switch-on Failure



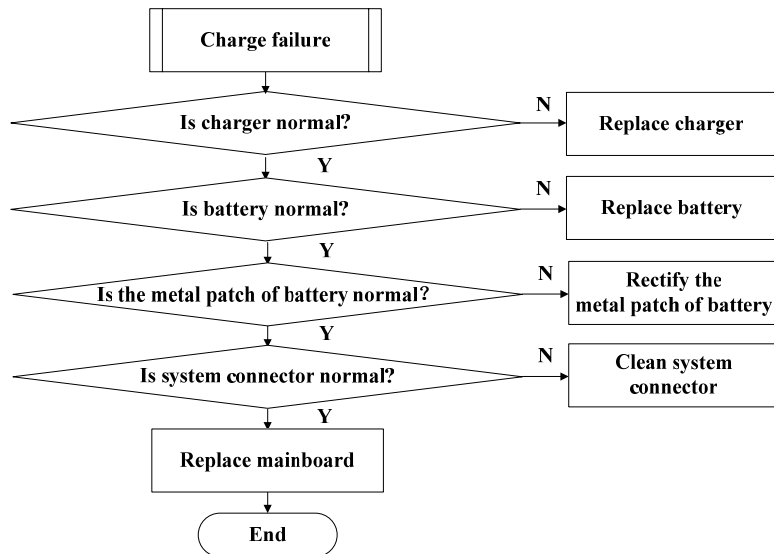
Hang



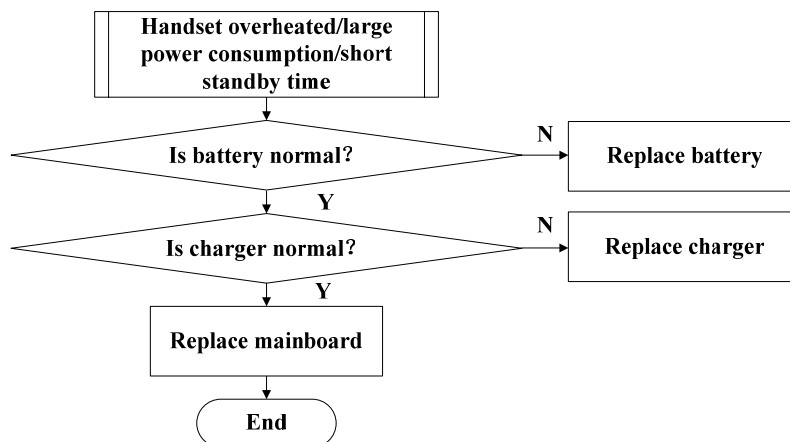
Automatically Switching Off



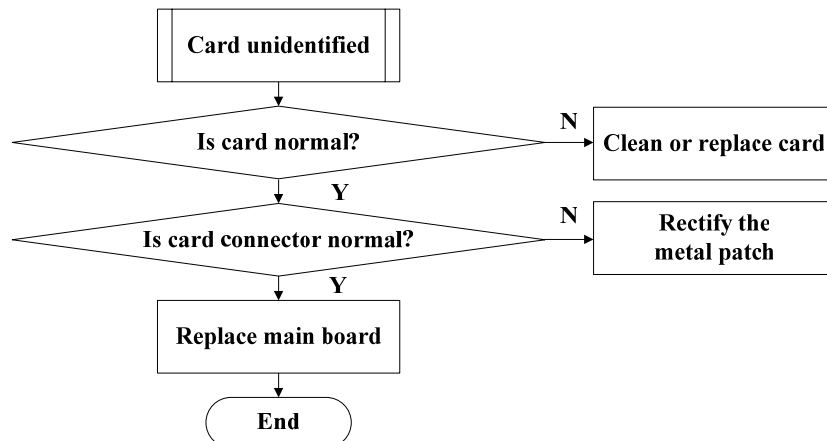
Charge Failure



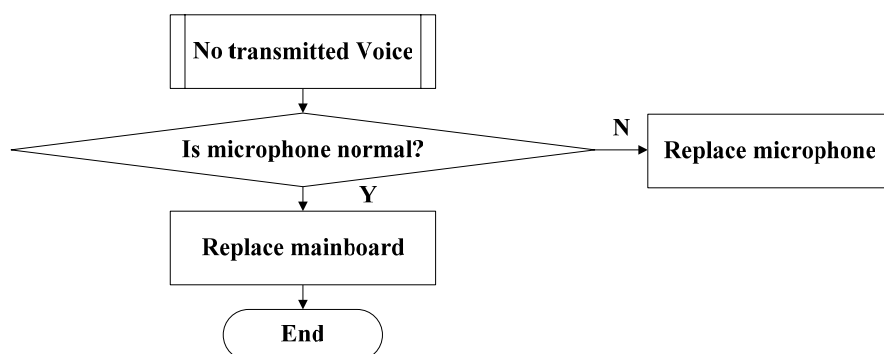
Handset Overheated/Large Power Consumption/Short Standby Time



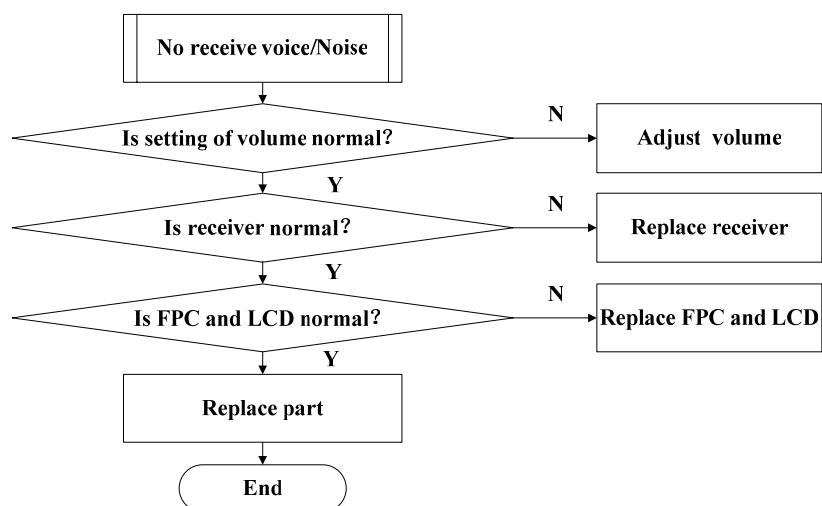
Card Unidentified



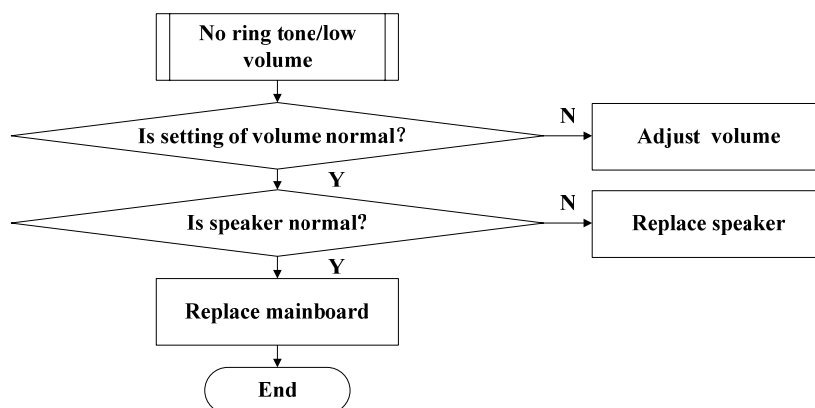
No Transmitted Voice



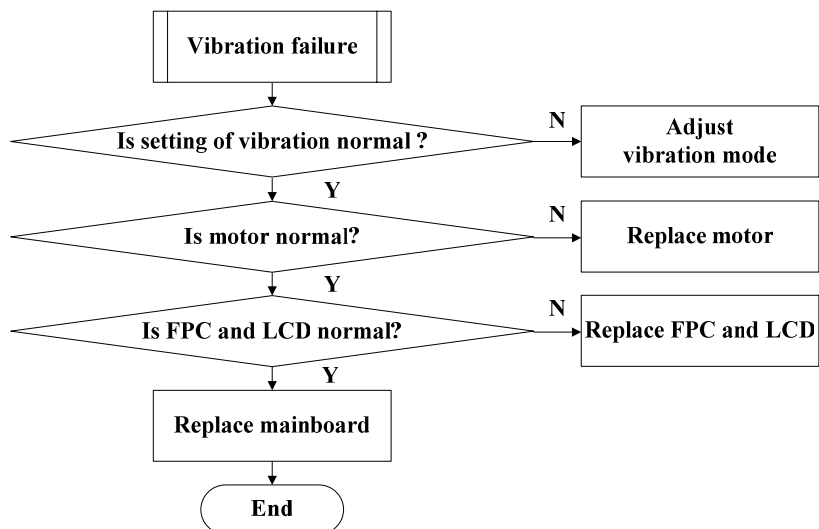
No Receive Voice/Noise



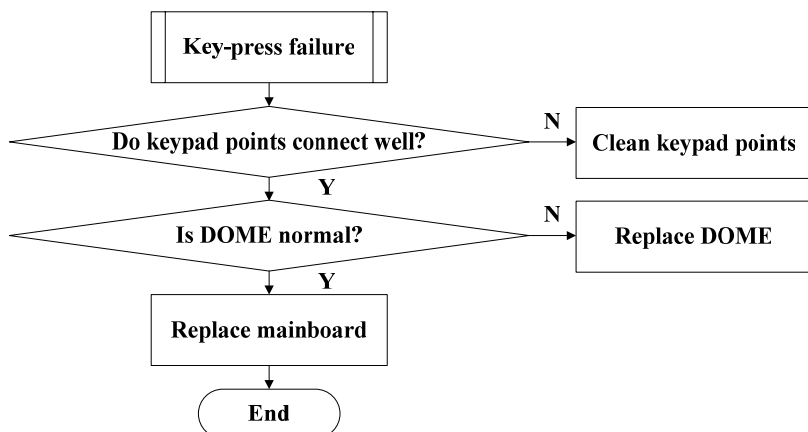
No Ring Tone/Low Volume



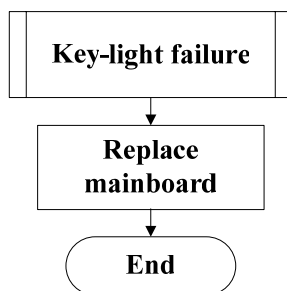
Vibration Failure



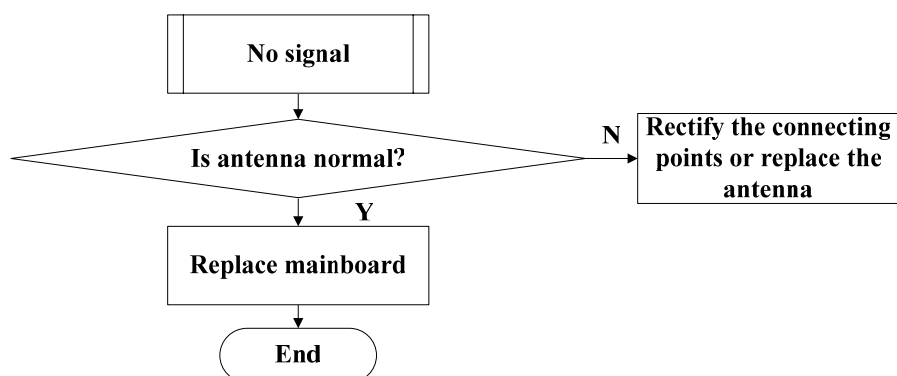
Key-press Failure



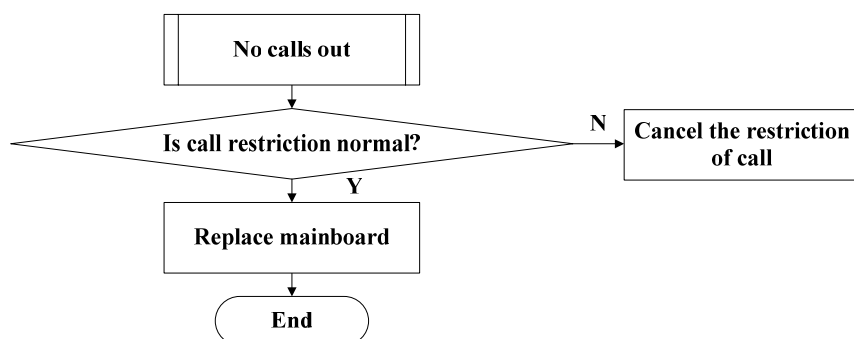
Key-light Failure



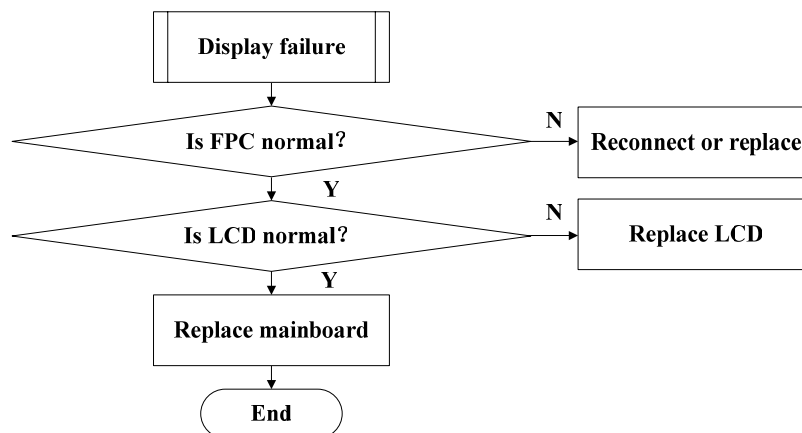
No Signal



No Calls Out



Display Failure



4. Parts List

Parts List of P300C3 CDMA Mobile Phone	
Code	Material Name
55401001281	P300C3 Parts of up front cover
55401001267	P300C2 Parts of up back cover
55401001265	P300C2 Parts of down front cover
55401001268	P300C2 Parts of down back cover
55402000315	P300C2 Keypad
35030100057	A300C LCD module
35040100006	Single-side receiver and speaker in X platform
35040300026	Microphone