

Technical Document

Document Title: ZTE C150 CDMA Digital Mobile
Phone After-sales Maintenance
(Level 1)

All 27 Pages

(Cover Included)

Drafted Wang Ruihuan\Kuang Fengzhi

Checked Ying Chenguang

Signed _____

Standardize _____

Approved _____

ZTE CORPORATION

Modification Record

Document No.	Version	Drafted	Date	Reason	Main Modification Points
		Wang Ruihuan\ Kuang Fengzhi	2007-11-24	None	None
<p>Notice:</p> <ol style="list-style-type: none">1. Once you modify the document, you need to fill in the table.2. Please fill “none” in the modification reason and main modification points during the initial document making.					

CONTENT

1. PRODUCT OVERVIEW.....	1
1.1 STANDARD CONFIGURATION.....	1
1.2 SPECIFICATIONS	1
1.3 FEATURE INTRODUCTION	1
1.4 INTERNAL NUMBER	1
2. INTERNAL STRUCTURE AND PRINCIPLE	2
2.1 FUNCTION TEST	2
2.2 SOFTWARE DOWNLOAD	2
2.3 DISASSEMBLY FLOW	10
2.4 COMPOSING	14
2.5 BLOCK DIAGRAM	15
2.6 BASIC DEVICE DISTRIBUTING	15
3. FLOW CHART OF FAMILIAR TROUBLESHOOTING (LEVEL 1)	16
3.1 COMPONENTS FAILURE.....	16
3.2 SWITCHING ON FAILURE.....	16
3.3 HANG	17
3.4 AUTOMATICALLY SWITCH OFF	17
3.5 CHARGING FAILURE.....	18
3.6 HANDSET HOT/STANDBY TIME SHORT	18
3.7 CAN NOT DETECT SIM CARD.....	19
3.8 NO TRANSMISSION VOICE	19
3.9 NO VOICE RECEIVING/NOISE IN THE RECEIVER/LOW VOICE VOLUME	20
3.10 NO RINGING /LOW VOLUME.....	20
3.11 KEY-PRESS FAILURE	21
3.12 DISPLAY FAILURE	21
3.13 KEY BACKLIGHT FAILURE	22
3.14 NO SIGNAL	22
3.15 NO CALL OUT.....	23
3.16 VIBRATION FAILURE	23
4. PARTS LIST	24

1. Product Overview

1.1 Standard Configuration

No.	Part Name	Qty
1	Handset	1
2	Lithium Battery	1
3	Battery Charger	1

1.2 Specifications

- ◆ Overall Appearance: Bar phone with monochrome film
- ◆ Dimension: 97mm*43mm*18mm
- ◆ Weight: 85g Below (Standard Battery Included)
- ◆ MSM Chip: MSM 6000
- ◆ Talking Time: About 2~4 hours (associated with network)
- ◆ Standby Time: About 80~160 hrs (associated with network)



1.3 Feature Introduction

- ◆ Phone Number Capacity: 200*6 (Groups) phone numbers, etc.
- ◆ Short Messages: inbox and outbox each saves 20 messages, supporting SM priority.
- ◆ Ring tones: 20 ring tones and 6 SM tones, supporting vibration.
- ◆ History call records: 30 pieces.
- ◆ Business Tools: Alarm Clock, Calculator, Stopwatch
- ◆ Games: Russian Block, Brick Breaker

1.4 Internal Number

Internal Model	External Model
P300A1	ZTE C150

2. Internal Structure and Principle

2.1 Function Test

Version Check Instruction: *983*837#

ESN Check Instruction: *#06#

Testing Functions:

Input “*983*3641#” →Press the **OK** key→Press the ***** key to enter the **Quick Test** status, which is automatic. The panes are displayed in sequence. Test the ring tones, motor, keypad, audio circuit, and earphone. After these operations, press the End key and restart the mobile phone.

2.2 Software Download

- ◆ About software downloading

Every handset sent to repair must be updated to the latest version.

Make ensure that the mobile phone is switched on and connects to the computer successfully, and its battery must be installed when its software is downloaded. During the download process, the mobile phone can not be powered off. And it could not be removed until software download finishes and PASS identification appears. Otherwise, the mobile phone can not be switched on.

- ◆ Cables for downloading data

Note: The cable for downloading data can be normally used only when driver files are installed.

Name of the cable: E798

Materials Code of the cable: IS011259



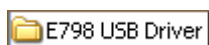
Name of the cable:C700 download data cable

Materials Code of the cable: ISO10158

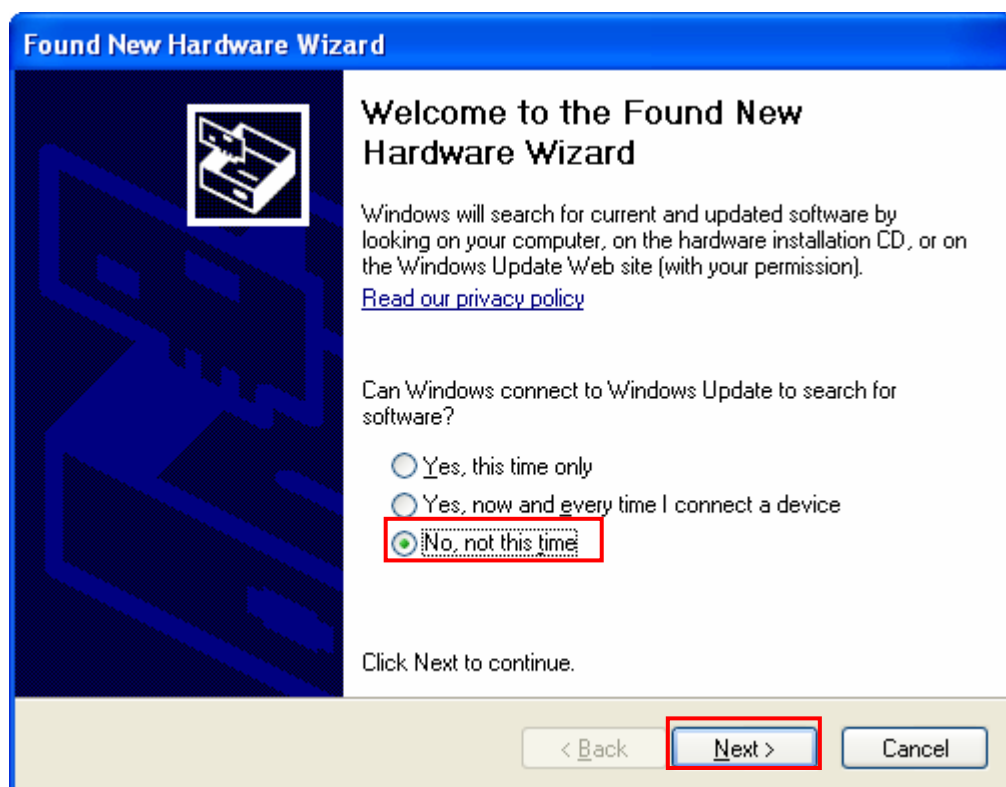


Notice: When using E798 data cable to download software, it is necessary to install the driver for the data download cable. This document only introduces the operation process while downloading software using E798 data cable.

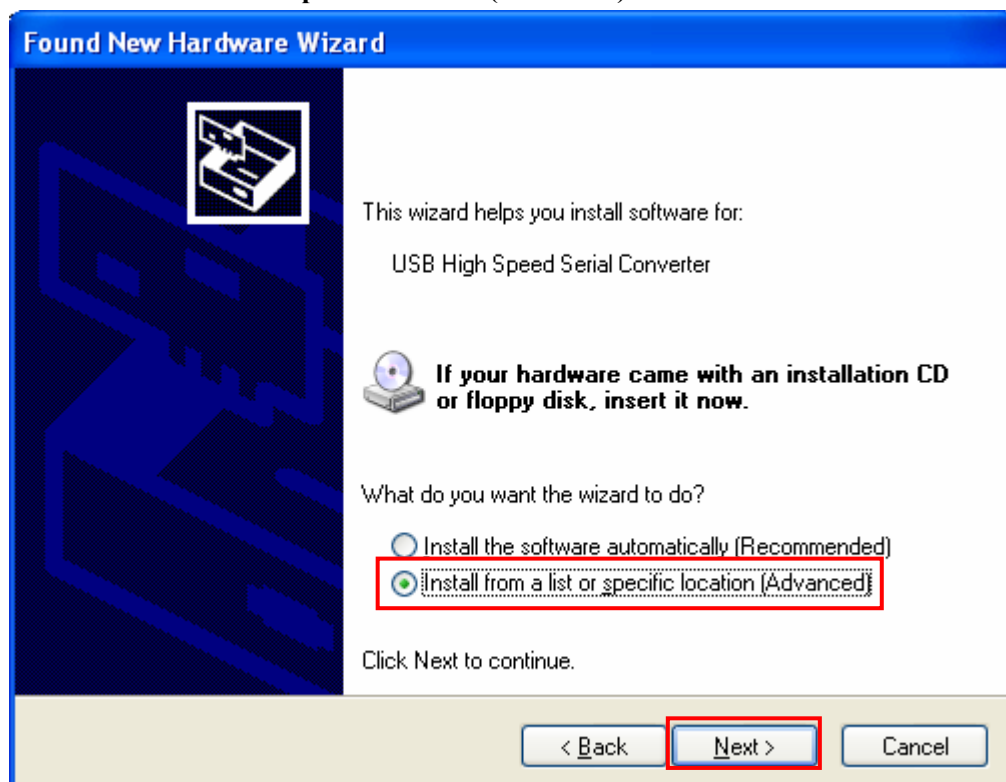
- ◆ Driver Files for Data Download Cable



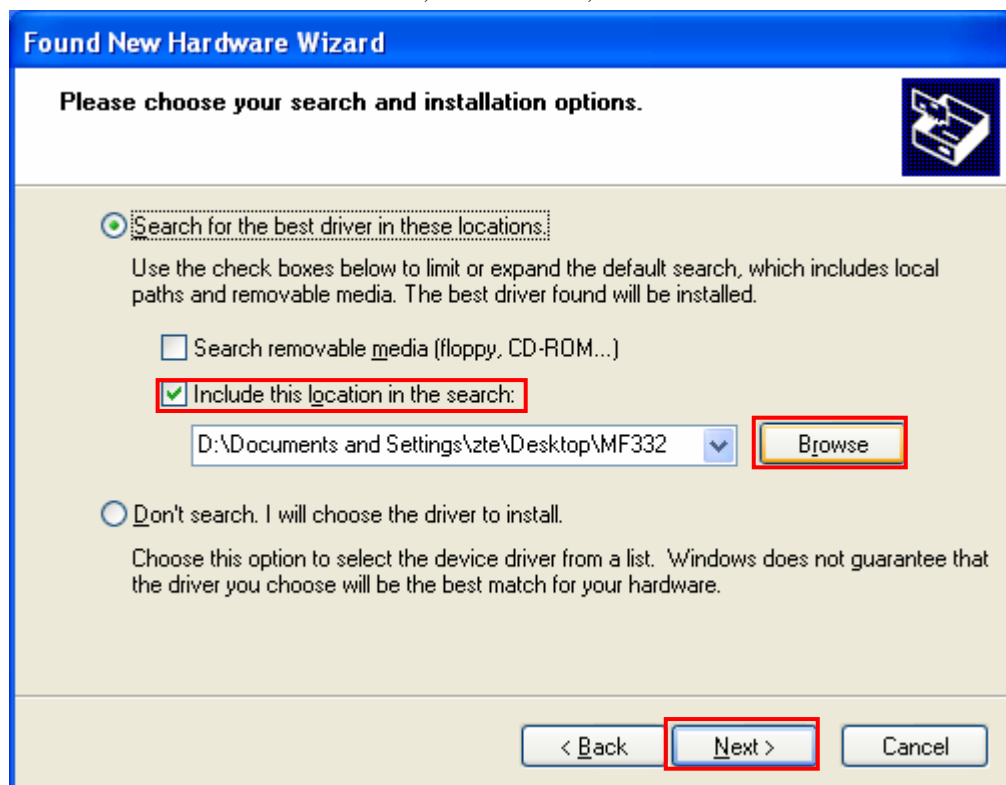
- ◆ Connect the cable with the computer:
- ◆ Select **No, not this time**, and then click **Next**.



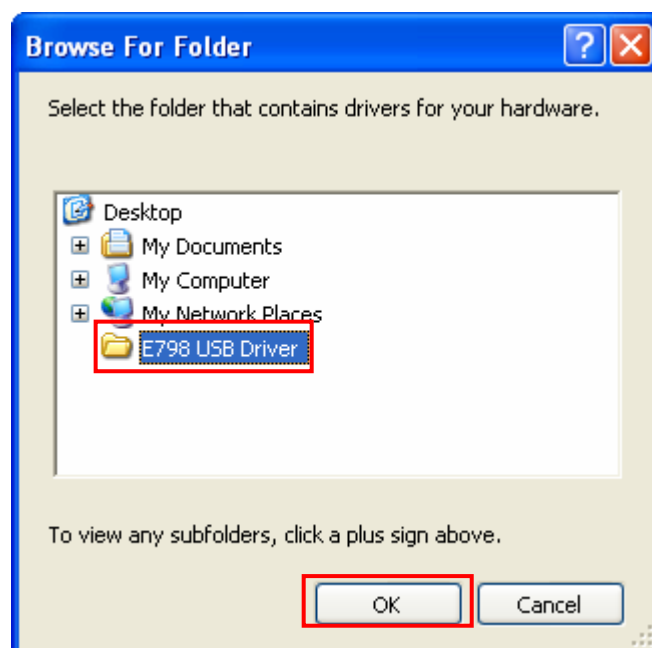
- ◆ Select **Install from a list or specific location (Advanced)** and then click Next.



- ◆ Select **Include this location in the search**, click **Browse**, then click **Next**.



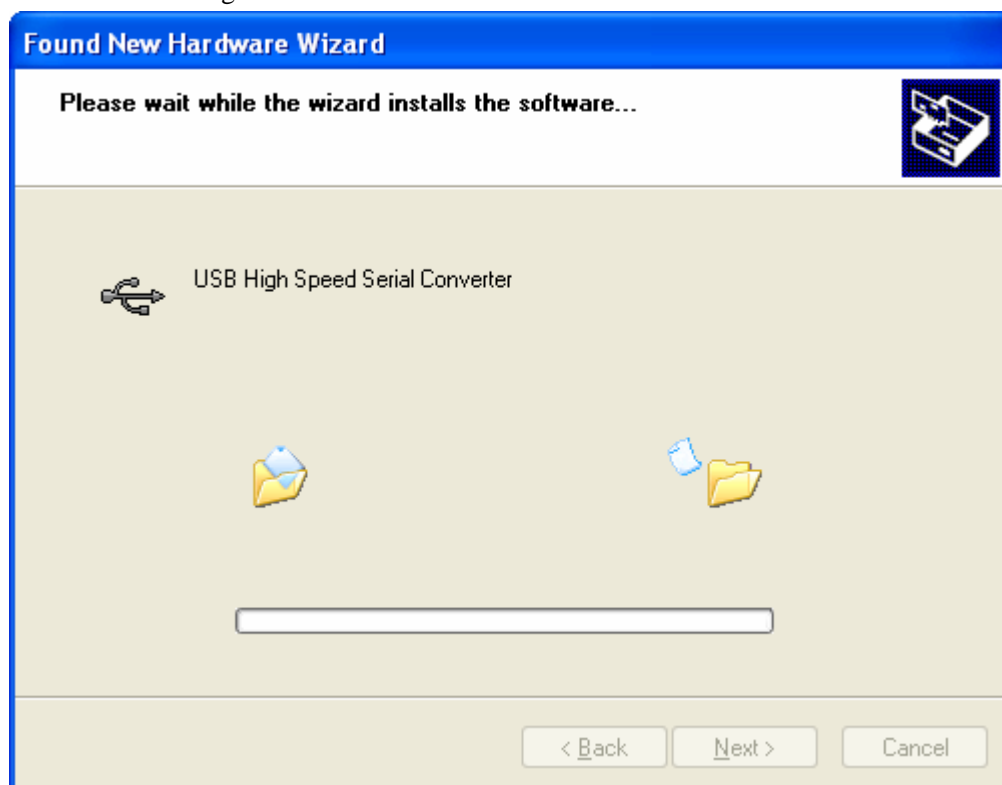
- ◆ Select **E798 USB Driver**, and click **OK**.



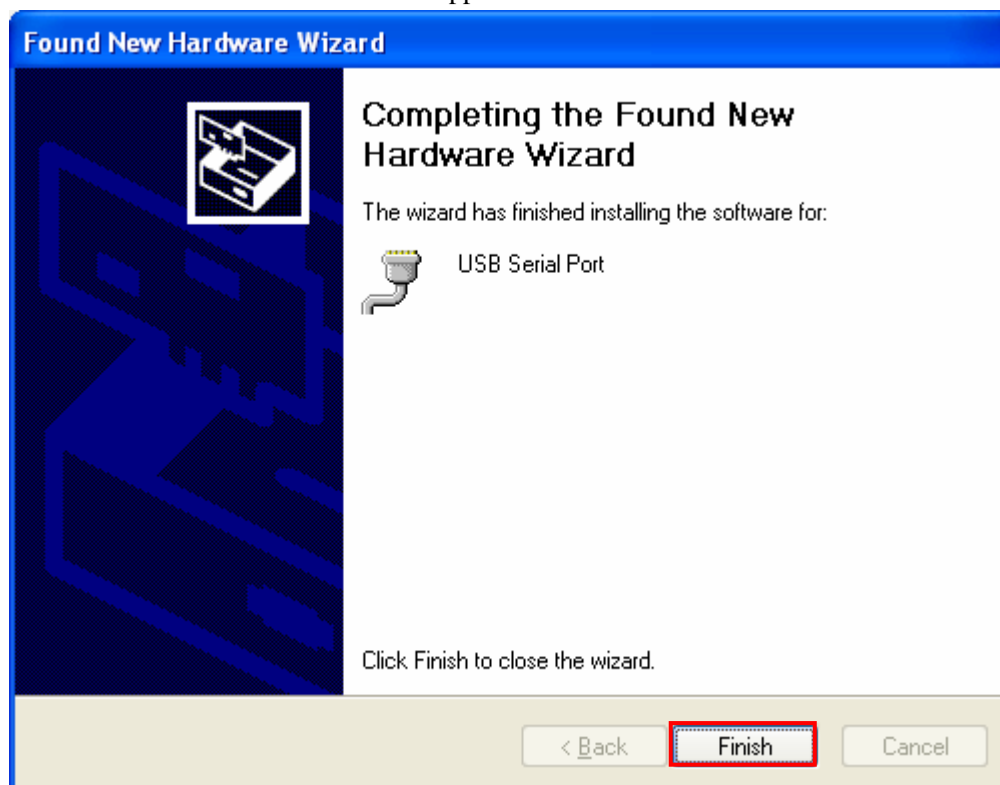
- ◆ During the software installation, an interface appears as shown below:
- ◆ Click **Continue Anyway**.



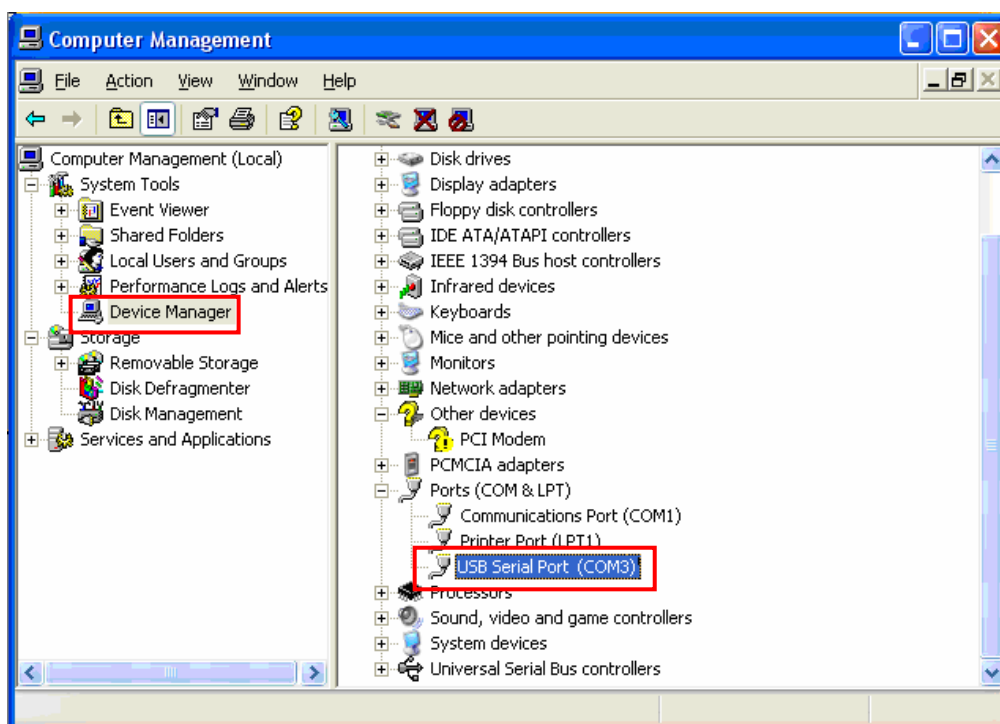
- ◆ Wait while installing the software.



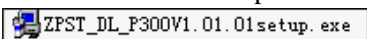
- ◆ The installation is finished. An interface appears as shown below:



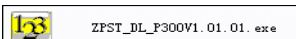
- ◆ Click **Finish**.
- ◆ Connect the data cable to the computer, and then observe the serial port through the path : **My Computer**→**Device Manager**→**Ports**, as shown below:



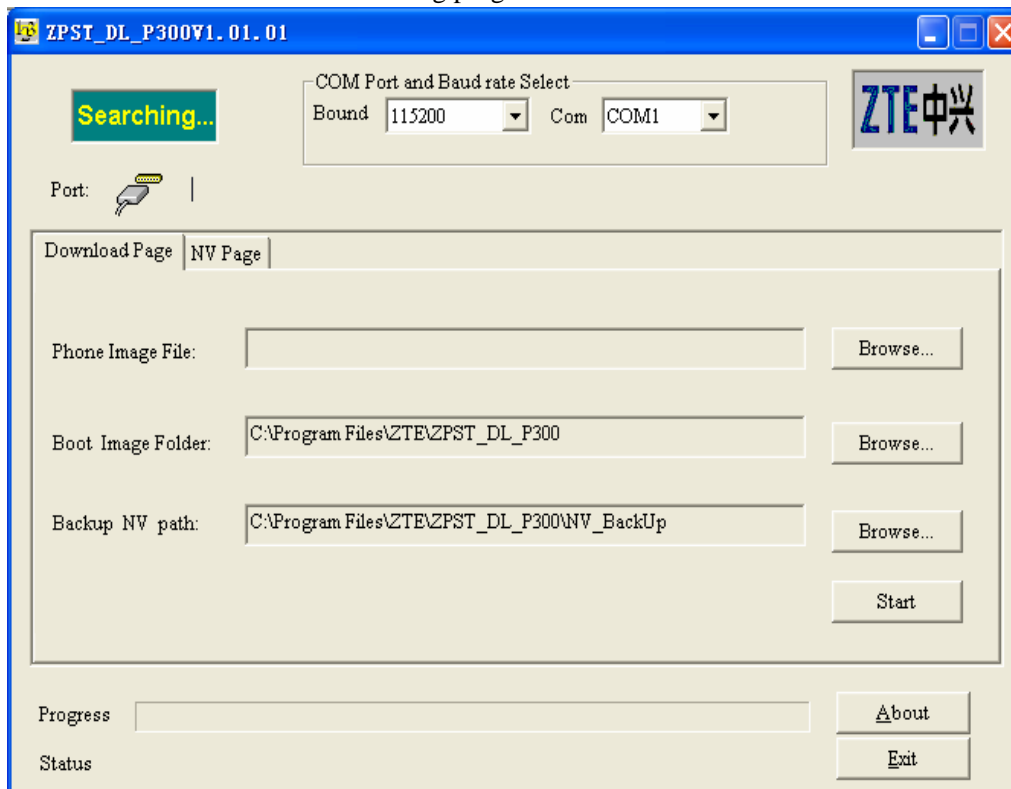
- ◆ Install the download platform: ZPST_DL_P300V1.01.01.exe.



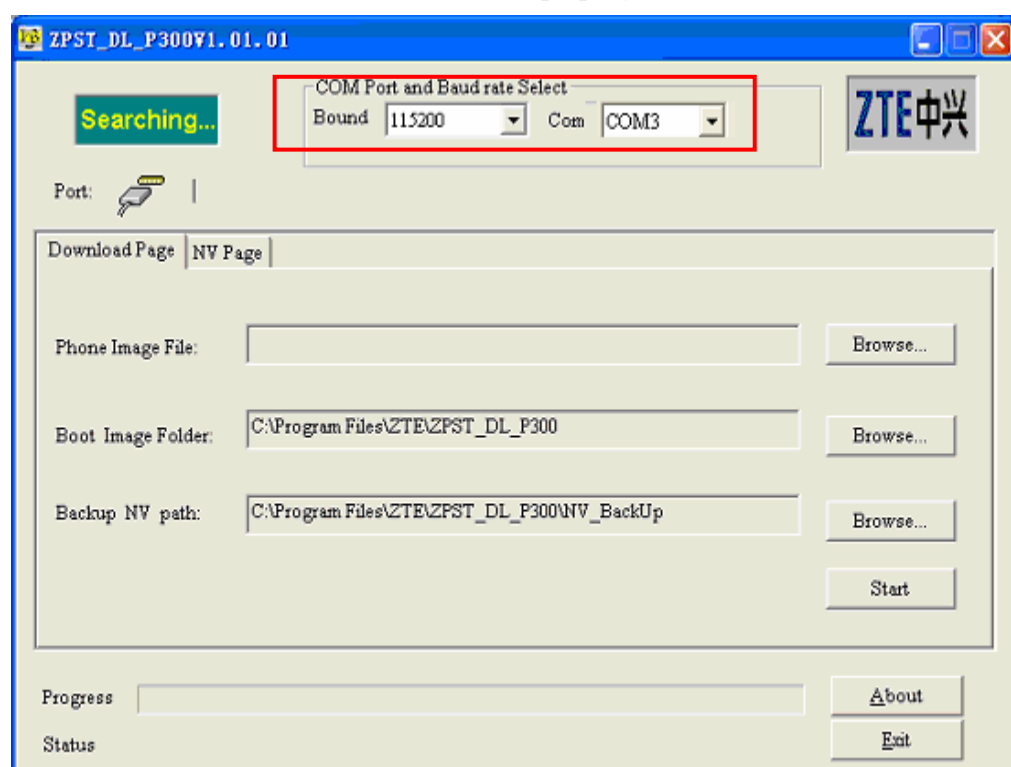
- ◆ After installation, double-click the shortcut icon on the desktop.



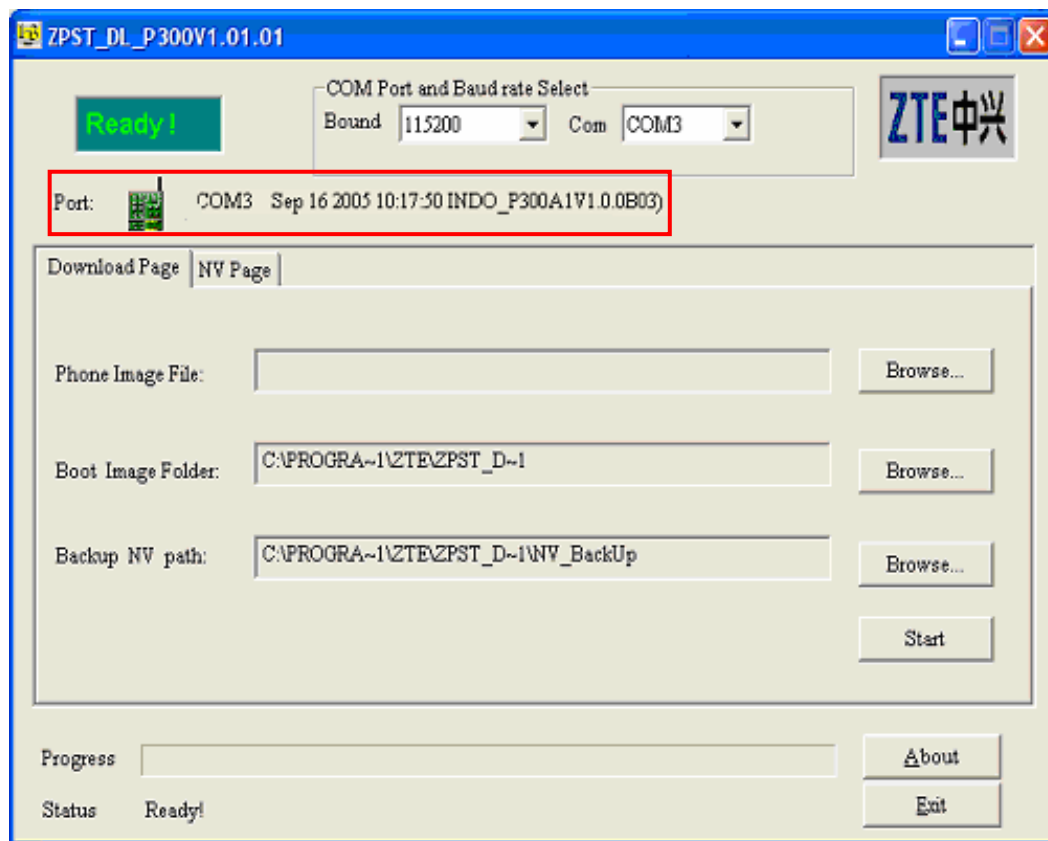
- ◆ The main interface of the downloading program is shown below:



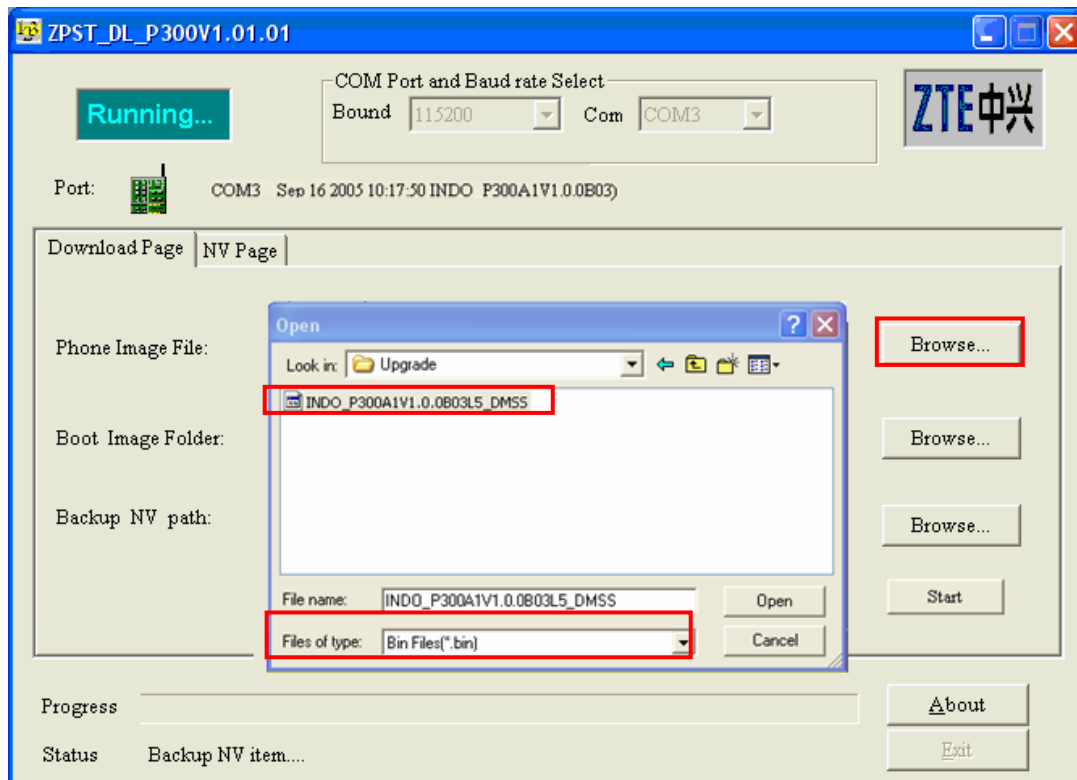
- ◆ Set the item **COM Port and Baud rate Select** properly, as shown below:



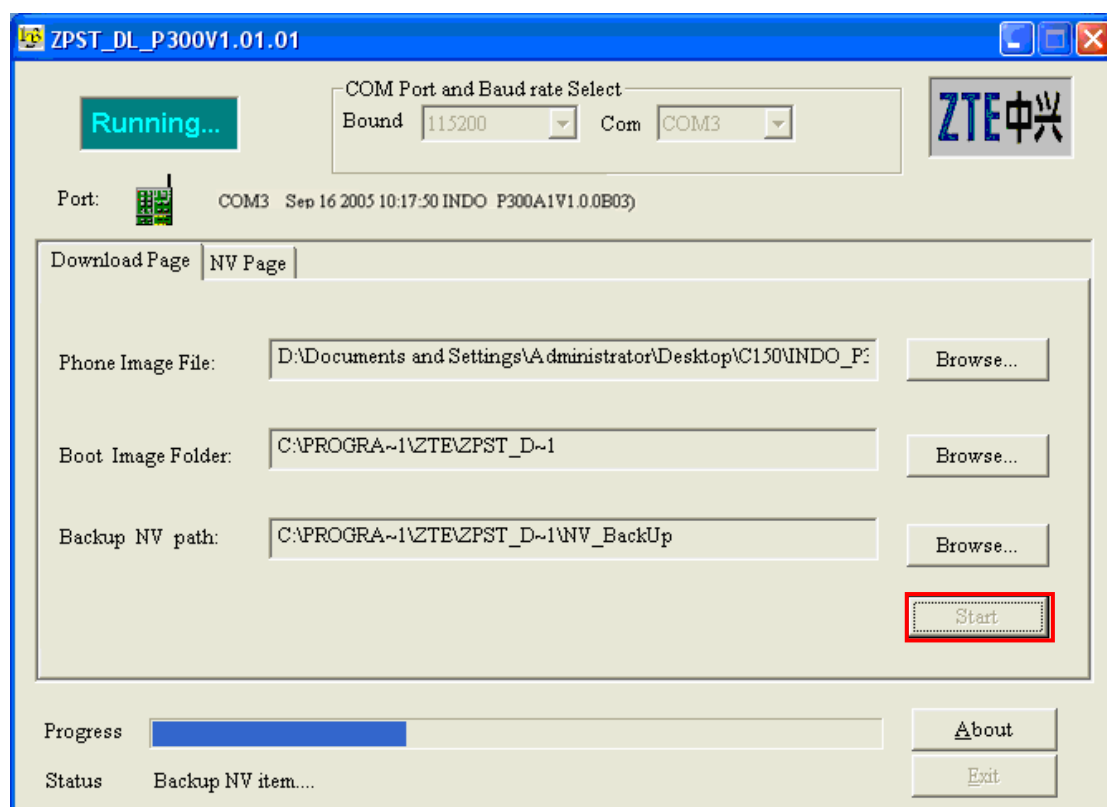
- ◆ Connect the handset. The original software version of the handset is automatically read, as shown below:



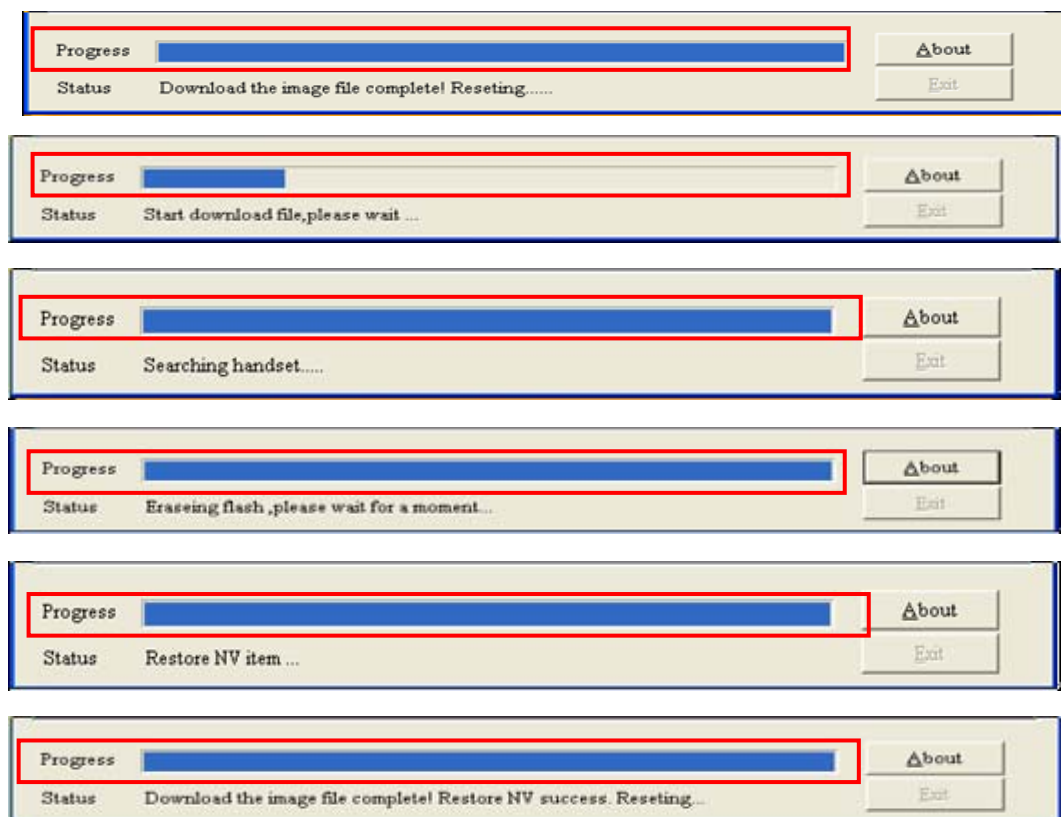
- ◆ Click **Browse** to select proper software version, as shown below:

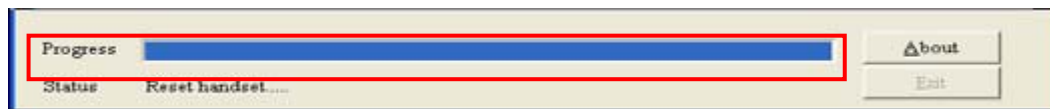


- ◆ Click **Start** to download the version, as shown below:

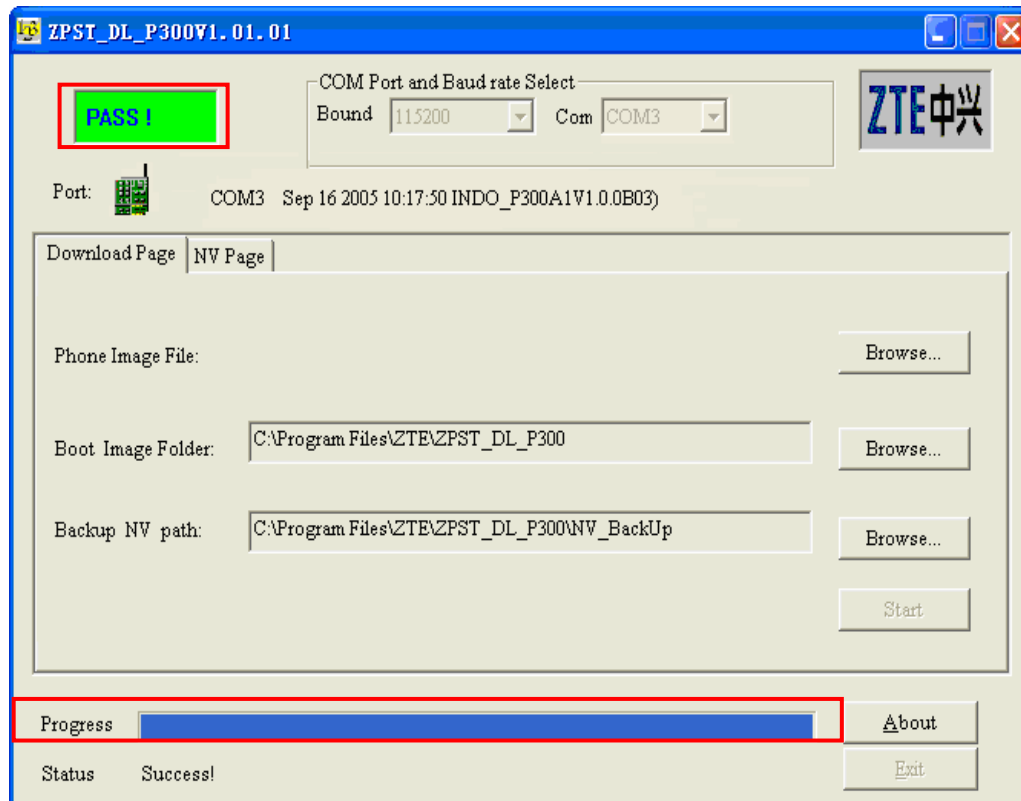


- ◆ Downloading.



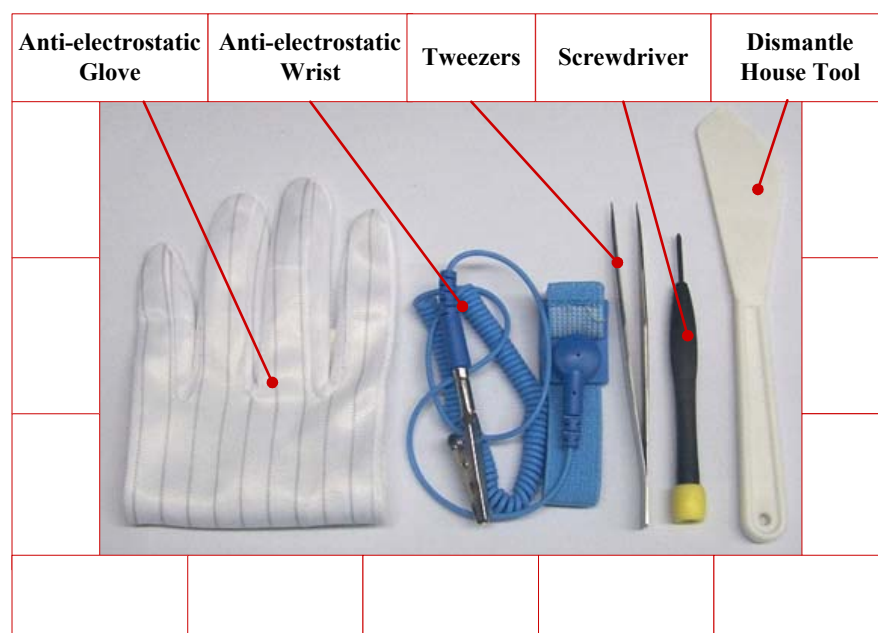


- ◆ The installation ends up, as shown below:



2.3 Disassembly Flow

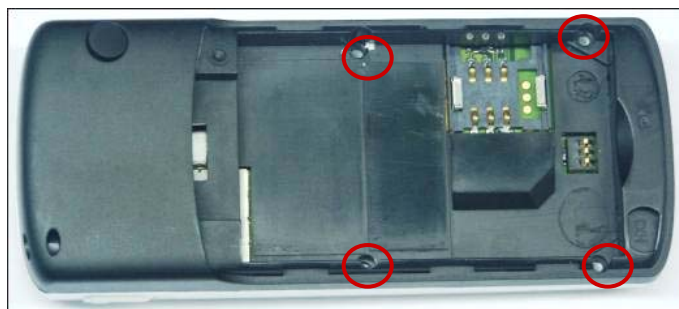
- ◆ Tools used to disassemble the mobile phone.



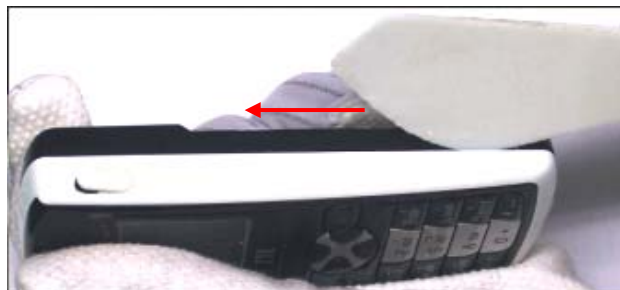
- ◆ Do as described to disassemble the mobile phone.
- ◆ Take out the battery carefully. Pay attention to the touch point and the touch plate, as shown below:



- ◆ Notes: Positions of four screws are shown below:



- ◆ Disassemble the front and back shells using the disassembly, paying attention to the locking position, as shown below:





- ◆ The disassembled front and back shells are shown below:
Note: Pay attention to the positions of the receiver. Ensure they are fixed well.



Receiver

- ◆ Take out the receiver using the tweezers, as show below:



- ◆ Take down the main board using the tweezers.
- ◆ Notes: Pay attention to the locking position of the main board, as shown below:

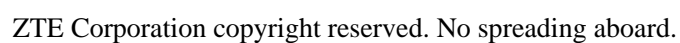


- ◆ Take down the motor using the tweezers, as shown below:



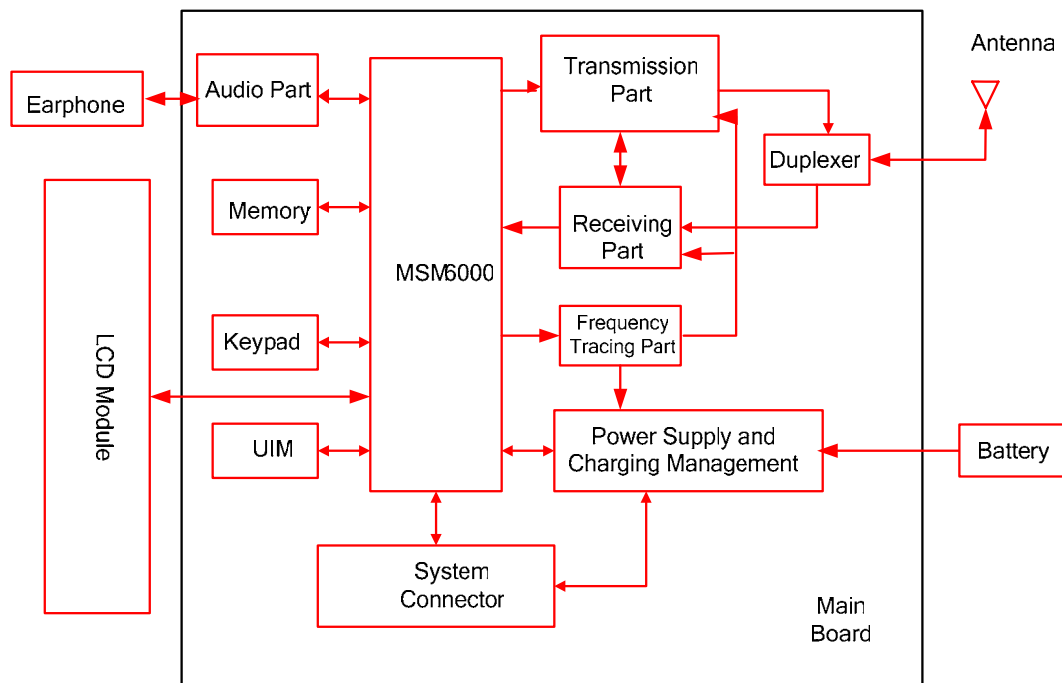
- 
- The image shows the internal components of a mobile phone during disassembly. On the left is the black plastic back cover. In the center is the green LCD screen assembly. On the right is the white main circuit board, which contains various electronic components. A red circle highlights a small component on the board, which is identified by a red line pointing to the label 'MIC' in a red-bordered box on the right side of the image.

The mobile phone includes the components as shown below:

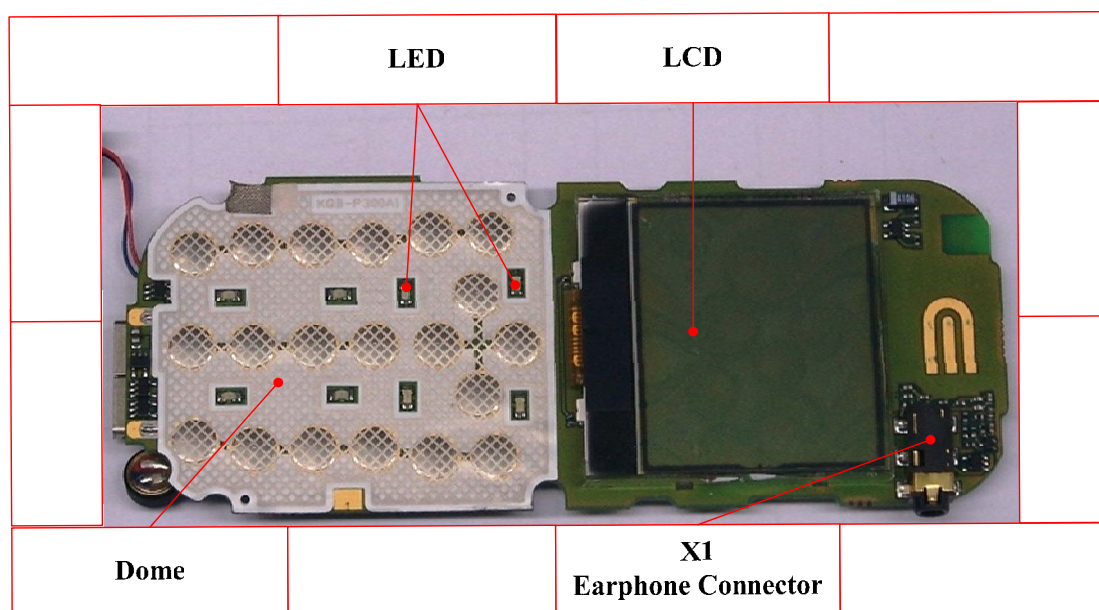


2.5 Block Diagram

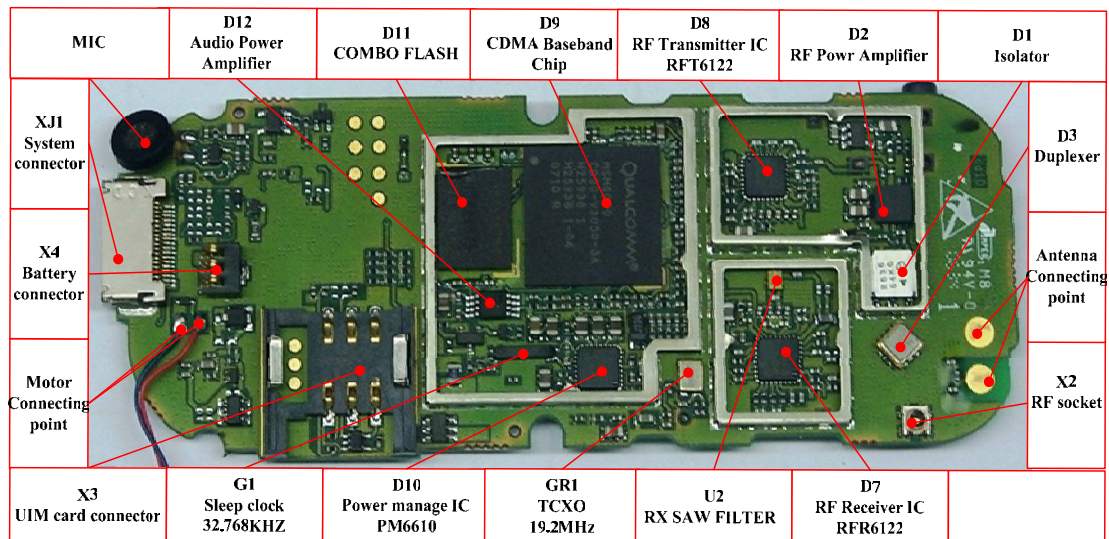
The principle of the mobile phone is shown in the block diagram below:



2.6 Basic Device Distributing



MB Top Distributing



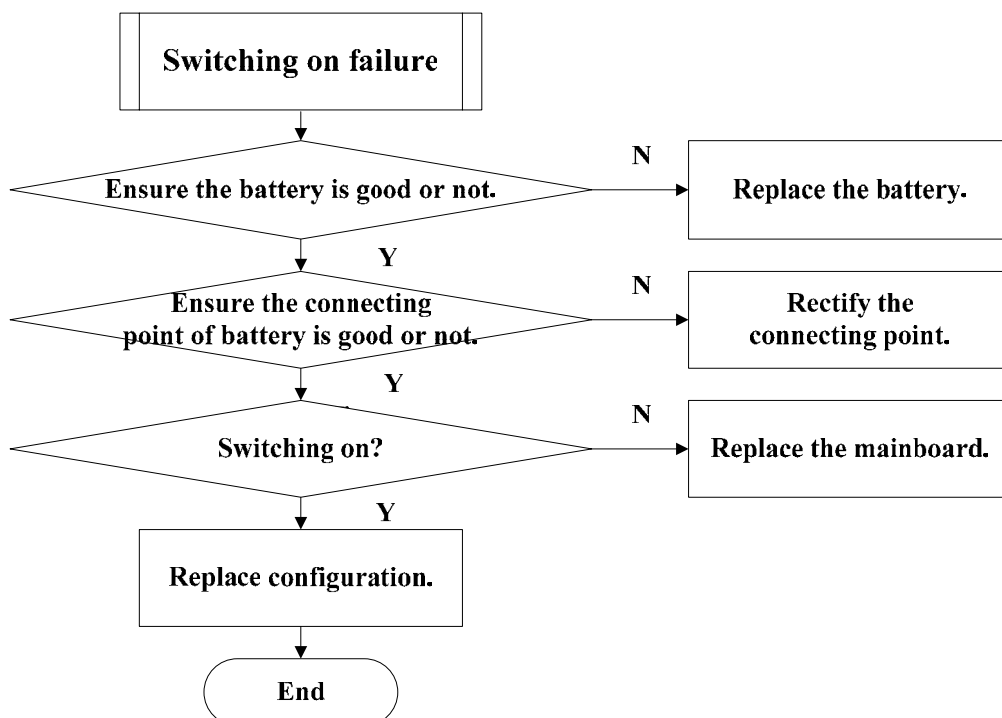
MB Bottom Distributing

3. Flow Chart of Familiar Troubleshooting (Level 1)

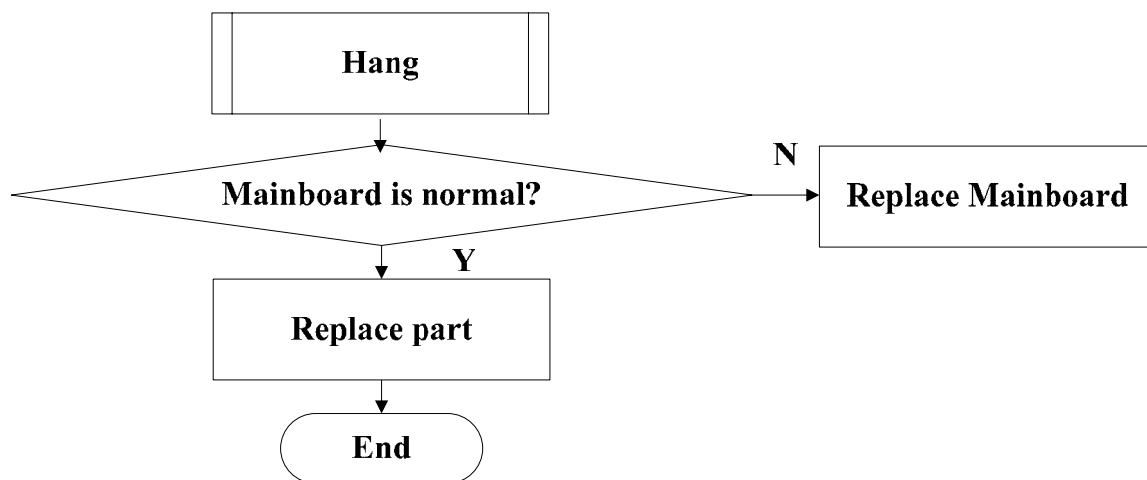
3.1 Components Failure

Please replace the faulty components referring to the disassembling steps.

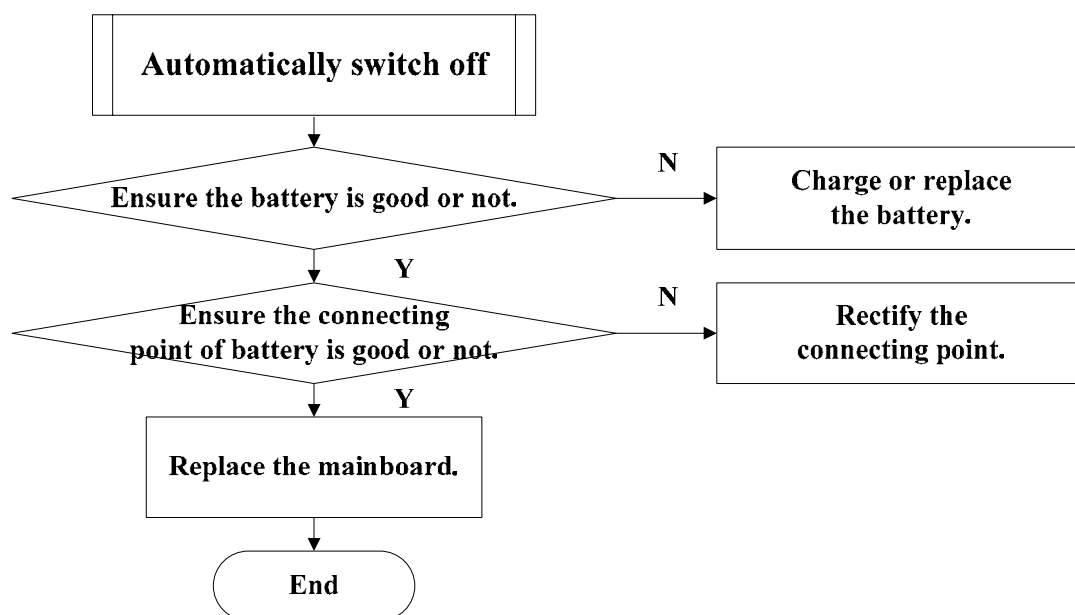
3.2 Switching On Failure



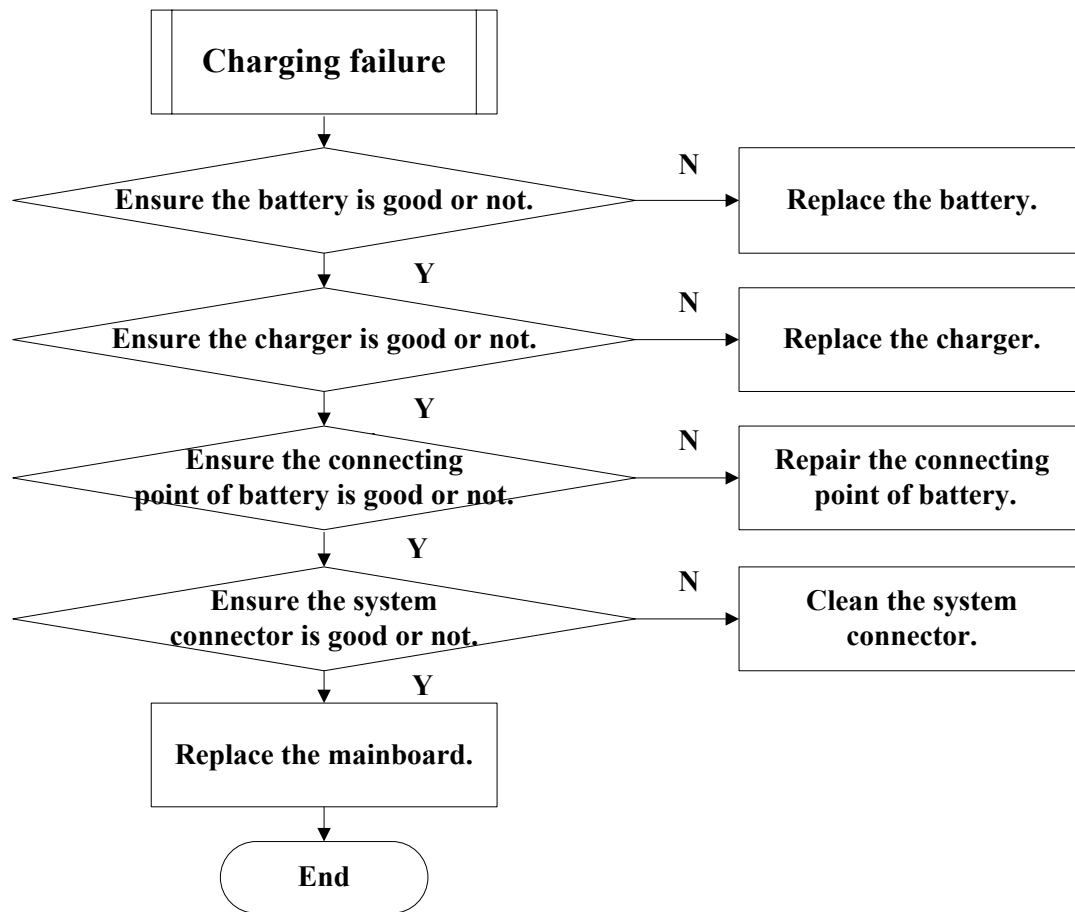
3.3 Hang



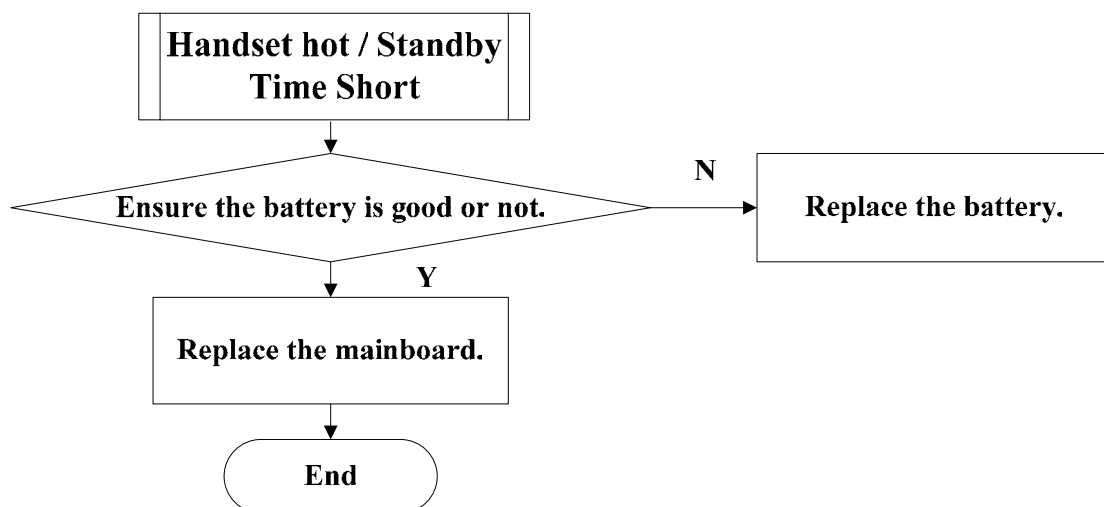
3.4 Automatically Switch Off



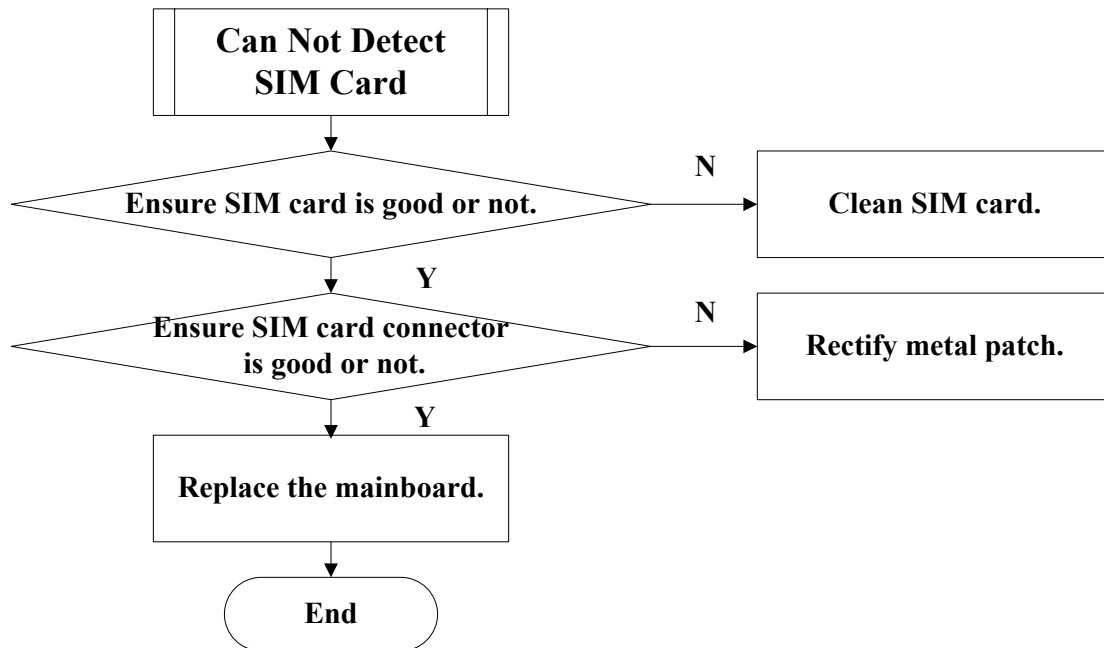
3.5 Charging Failure



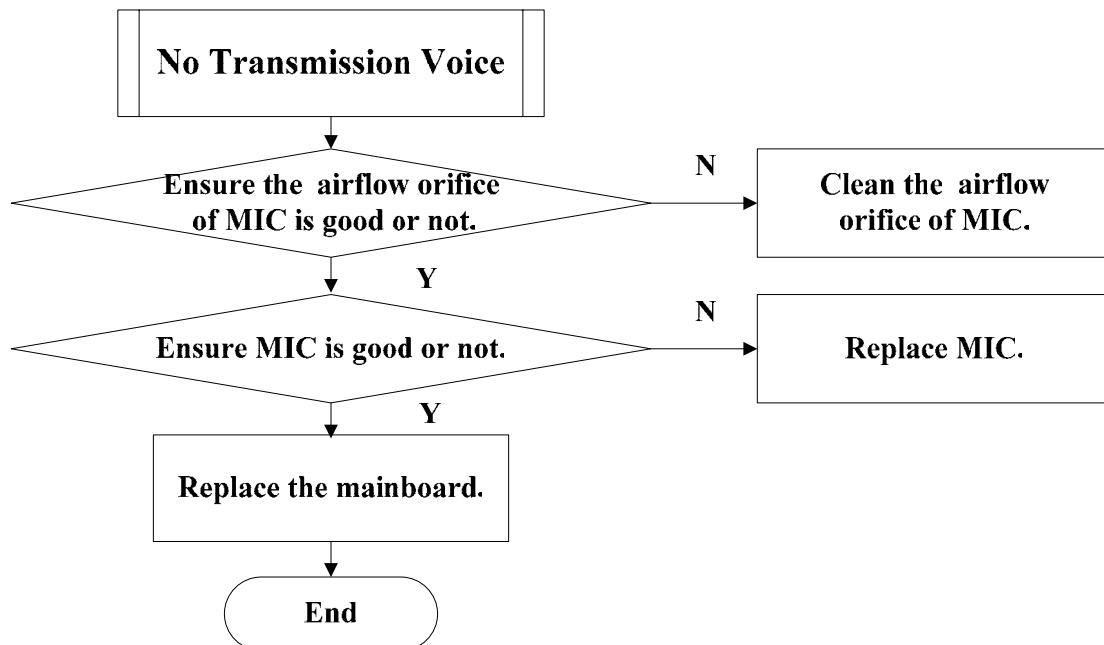
3.6 Handset Hot/Standby Time Short



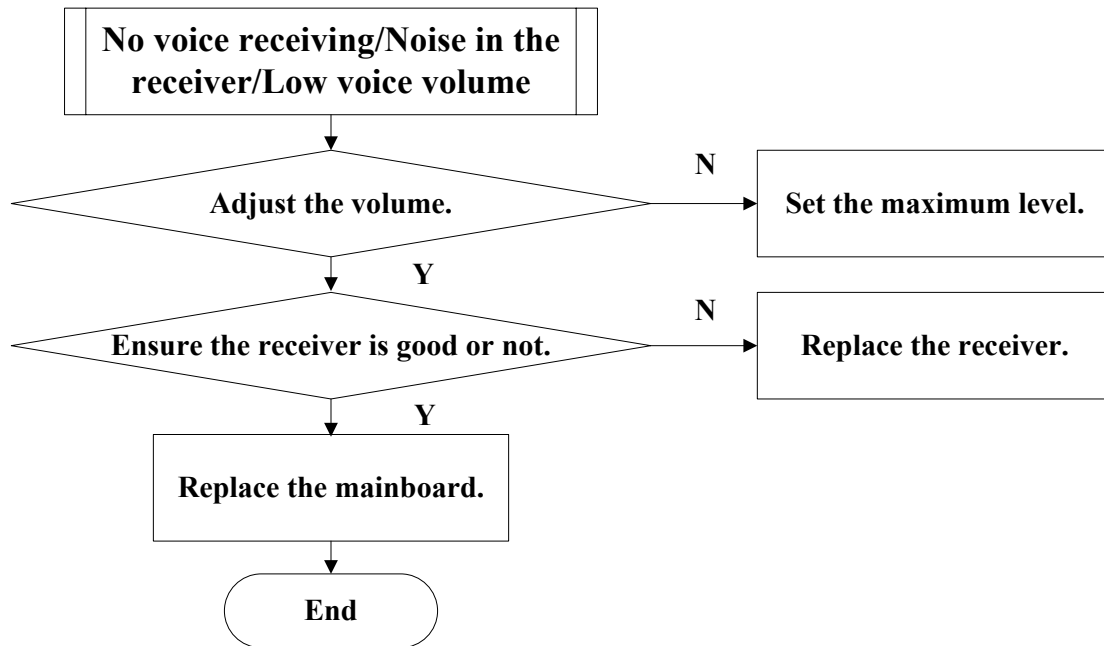
3.7 Can Not Detect SIM Card



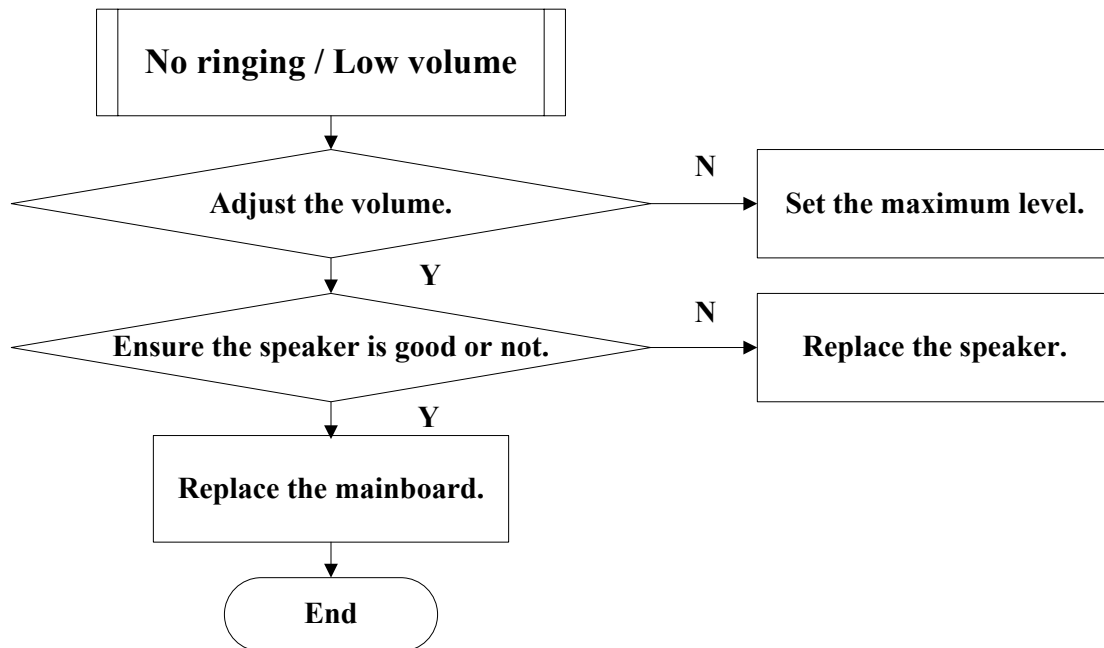
3.8 No Transmission Voice



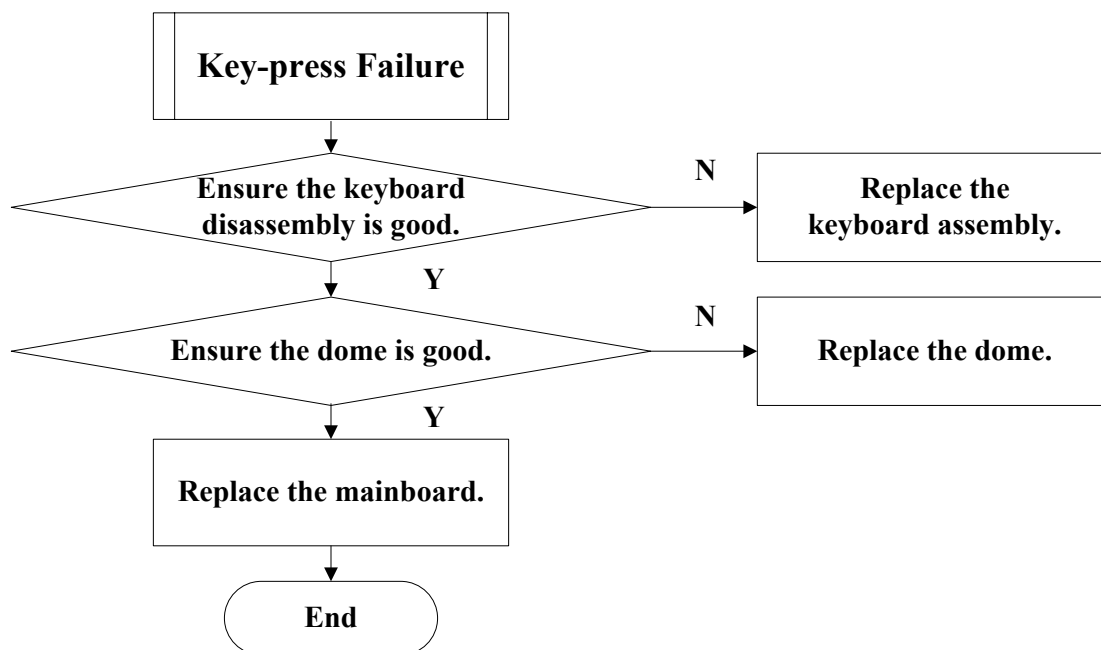
3.9 No voice receiving/Noise in the receiver/Low voice volume



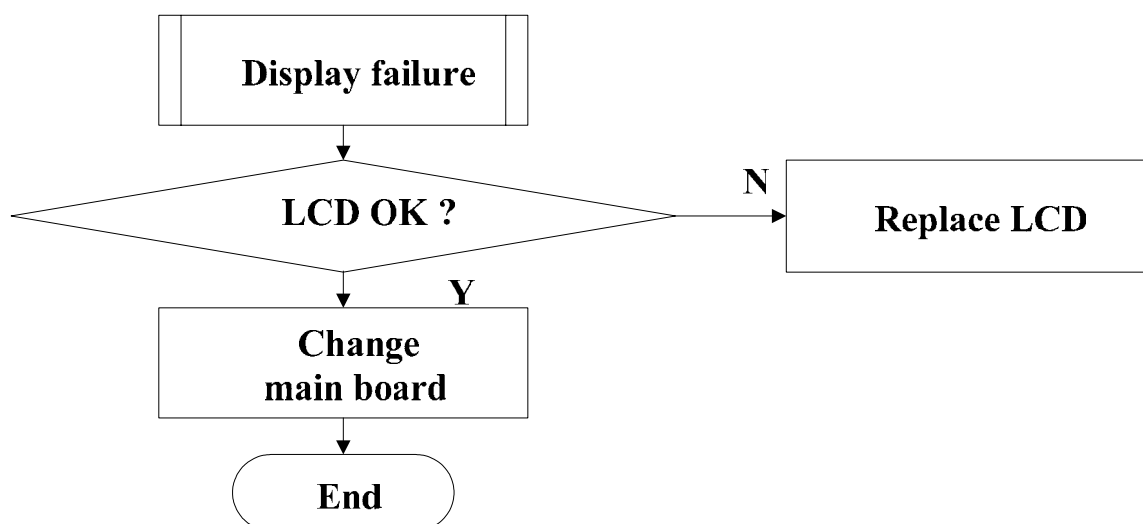
3.10 No ringing /Low volume



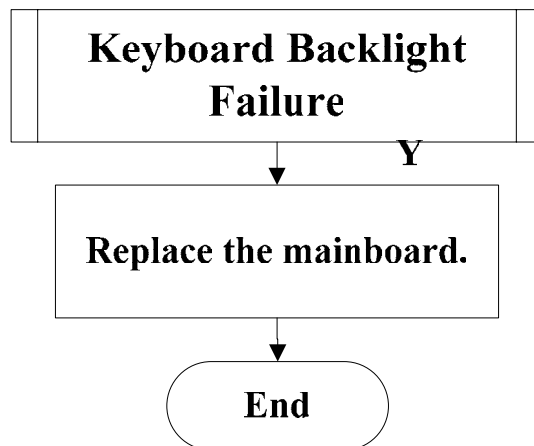
3.11 Key-press Failure



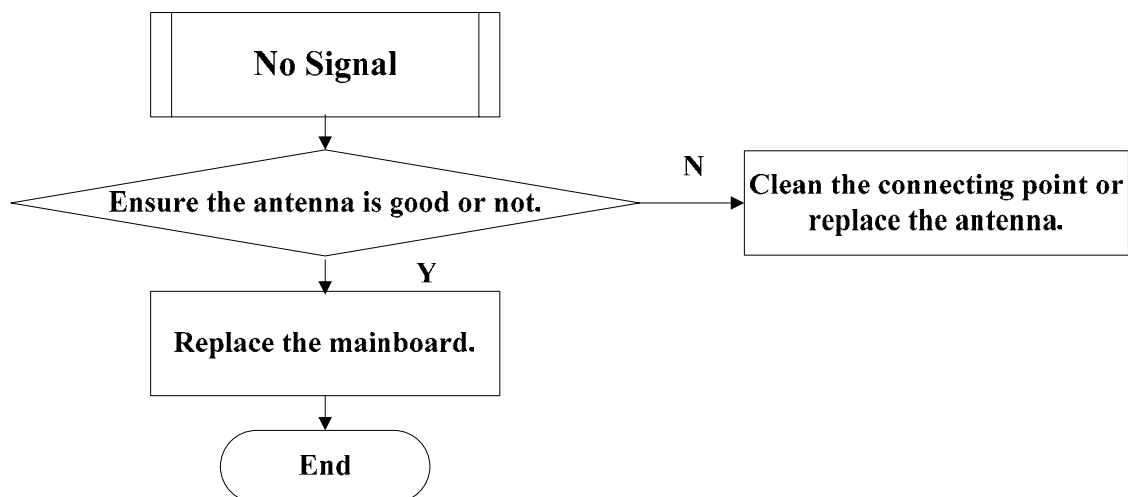
3.12 Display Failure



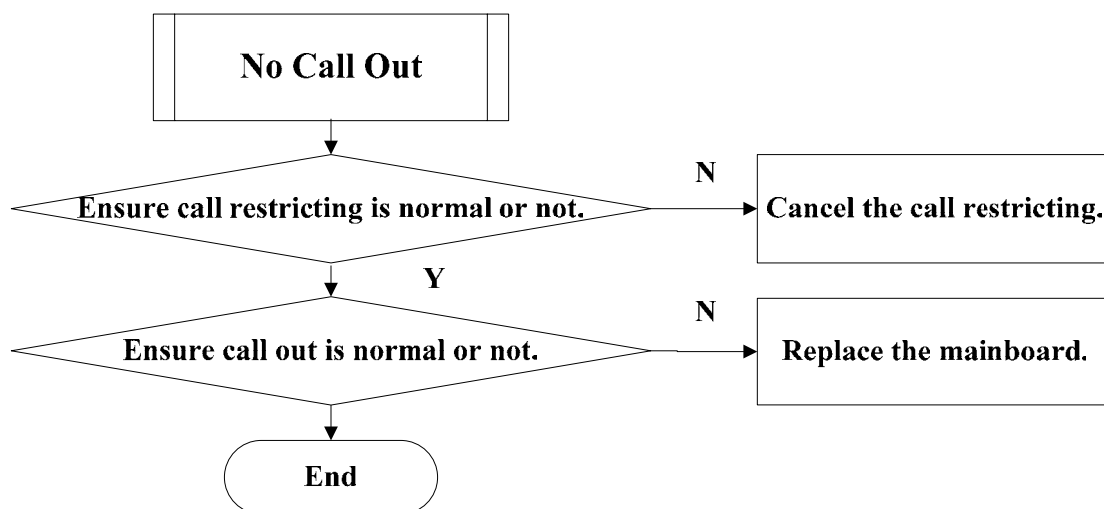
3.13 Key Backlight Failure



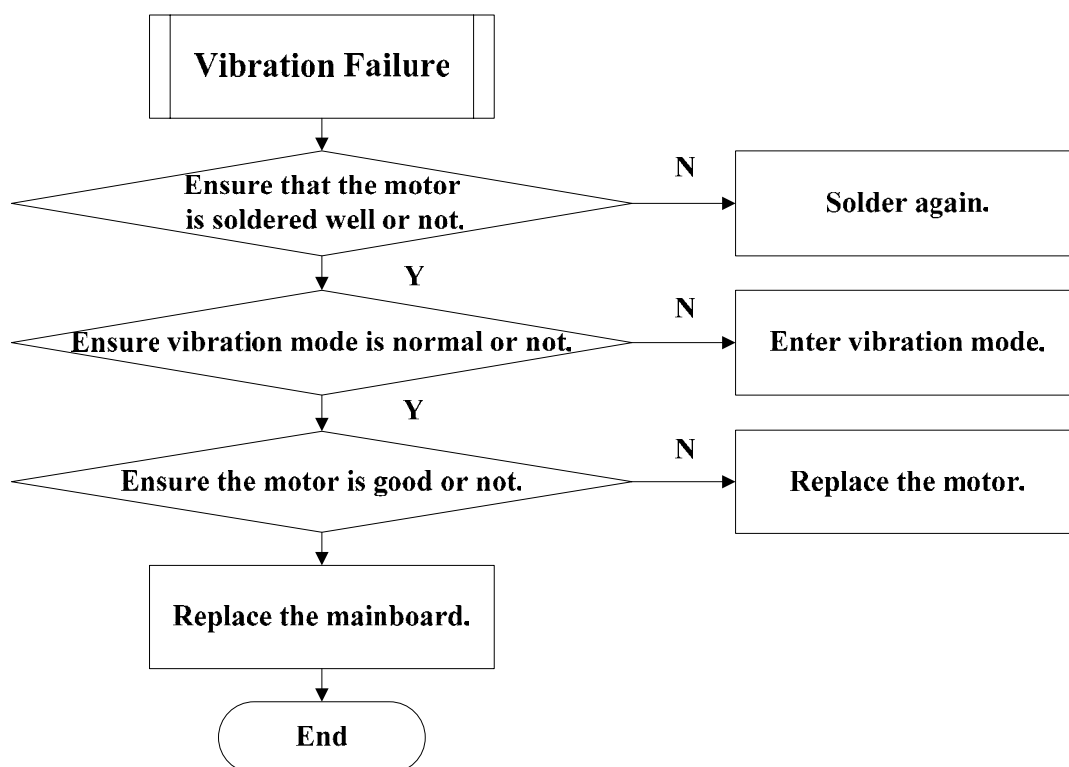
3.14 No Signal



3.15 No Call Out



3.16 Vibration Failure



4. Parts List

ZTE 150 CDMA Digital Mobile Phone After-sales Parts Lists		
No.	P/N	Part Name
1	055401001262	P300A1 Front Shell Components
2	055401001263	P300A1 Rear Shell Components
3	055402000309	P300A1 Keypad
4	055402000310	P300A1 Keypad Vaulted Membrane
5	055402000308	P300A1 Coaxial Plug
6	055401001264	P300A1 Battery Cover
7	126750850020	P300A1 Mother Board
8	035040100031	Speaker & Receiver
9	035040300026	V767 Microphone
10	035070100001	VX2 Column-like Motor
11	35030100010	R45C1 LCD Module

Note: This is the main parts list. If you need a detail one, please apply it from local after-sales service manager.