



## Modification Record

File No.	Version No.	Drafted	Date	Modification Reason	Main Modification Content
	A	Kuang Fengzhi	2008-01-09	None	None
Notice: 1. Fill in the table while modify the document. 2. The modification reason and main modification content columns are filled in none during first document making.					

# CONTENTS

<b>1. PRODUCT SUMMARY .....</b>	<b>1</b>
1.1 THE STANDARD FITTINGS .....	1
1.2 SPECIFICATION.....	1
1.3 MAIN FUNCTIONS .....	1
1.4 INNER/OUTER TYPE.....	2
<b>2 INNER STRUCTURE AND ELEMENTS.....</b>	<b>2</b>
2.1 HANDSET TEST CODE .....	2
2.1 SOFTWARE DOWNLOAD .....	2
2.2 DISASSEMBLY FLOW .....	10
2.2 COMPOSING .....	13
2.3 BLOCK DIAGRAM .....	14
2.4 BASIC DEVICE DISTRIBUTING .....	14
<b>3 FLOW CHART OF FAMILIAR TROUBLESHOOTING (LEVEL 1) .....</b>	<b>15</b>
3.1 COMPONENTS FAILURE.....	15
3.2 HANGING.....	15
3.3 SWITCHING ON FAILURE.....	16
3.4 AUTOMATICALLY SWITCH OFF .....	16
3.5 CHARGING FAILURE.....	17
3.6 HANDSET HOT .....	17
3.7 SIM CARD FAILURE.....	18
3.8 NO TRANSMISSION VOICE .....	18
3.9 NO VOICE RECEIVING/NOISE IN THE RECEIVER/LOW VOICE VOLUME .....	19
3.10 NO RINGING /LOW VOLUME .....	19
3.11 KEY-PRESS FAILURE .....	20
3.12 DISPLAY FAILURE .....	20
3.13 KEY BACKLIGHT FAILURE .....	21
3.14 NO SIGNAL .....	21
3.15 NO CALL OUT.....	22
3.16 VIBRATION FAILURE .....	22
<b>4 PARTS LIST .....</b>	<b>23</b>

## 1. Product Summary

### 1.1 The standard fittings

NO.	Name	Quantity
1	Handset	1
2	Li Battery	1
3	Charger	1

### 1.2. Specification

- Network: GSM
- Dimension: about 107.58mm \* 45.19mm\* 13mm。
- Battery: 670mAh Li Battery

### 1.3 Main Functions

- Sign recognition manages
- PIN enters error prompt
- Business prompt: prompt successful login.
- International Mobil equipment identifies number.
- SMS business area broadcast
- SMS direction and answer
- GSM900/DCS1800 double frequencies switch
- Voice business and CH/EN SMS business
- Number identifies
- Call course signal prompt
- Area/network prompt
- Area/network select



## 1.4 Inner/Outer Type

Inner Type	Outer Type
P108A11	A61

## 2 Inner Structure and Elements

### 2.1 Handset Test Code

#### Basic Function Test:

- ◆ Input \*983\*0# command to enter test mode
- ◆ Check LCD: LCD will first be purely black screen then purely white screen, dot/line or other color would be abnormal.
- ◆ Check Keyboard: Check each individual key to guarantee the correct character can be shown. Take care about the feeling of touch, and you should feel the difference for switch of keys, and you should press the keys same.
- ◆ Check Ringtone & Vibration: The volume of the ringtone and vibration should be normal. Strange voice or abnormal volume is not allowed.
- ◆ Check Audio loop: puff towards MIC to hear “Sha sha” from the telephone receiver.

#### Check IMEI No. :

- ◆ Input “\*#06#” to exhibit the inner IMEI number and check whether it is same as the IMEI number on the back of the telephone.

#### Check Software Version:

- ◆ Input “\*983\*839#” to shown the version of telephone Flash .Check whether it is the same as the version upgraded .The same batch of mobile should have the same software version.

### 2.1 Software Download


- ◆ Software download illumination

Each handset to be repaired should be upgraded to the latest version, and each repaired handset should be in the latest version.

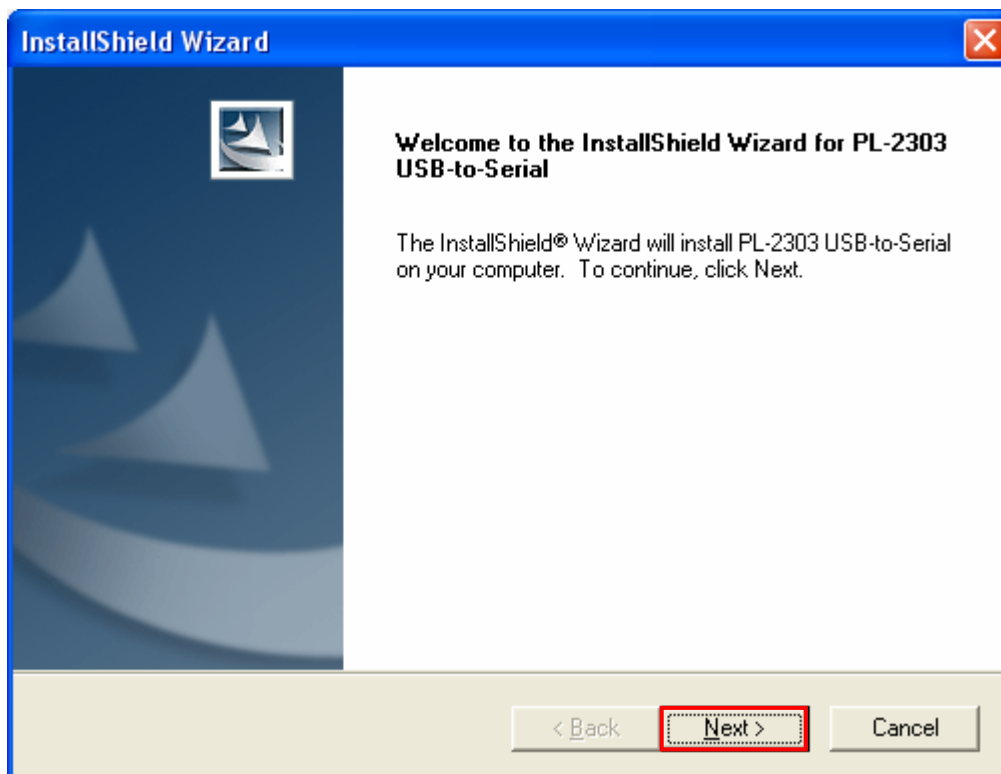
Note: a. The handset must be able to switch on and connect with PC successfully before downloading the software. If the handset can't be switched on, it can't download the software.

b. The handset must have continuous power supply and mustn't be taken out during downloading the software. When it finishes and appears 'PASS' word, the handset can be taken out. Otherwise, the handset can not be switched on.

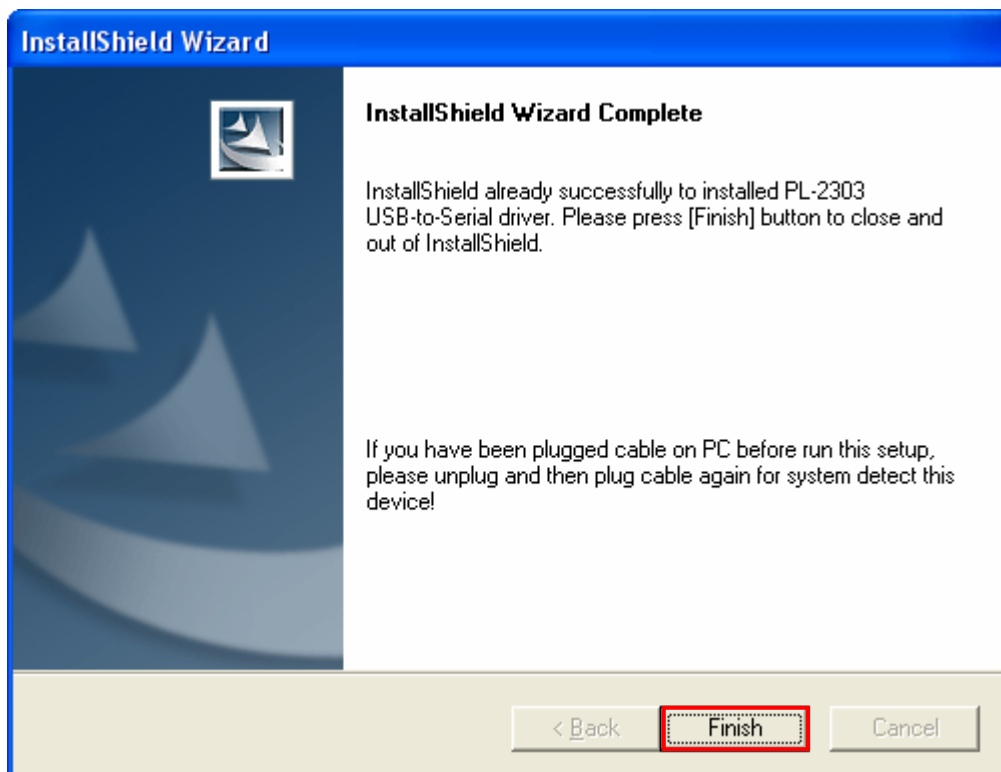
- ◆ Install USB driver before installing platform.

 R52@VX download cable driver.exe

- ◆ Click “Next” button.



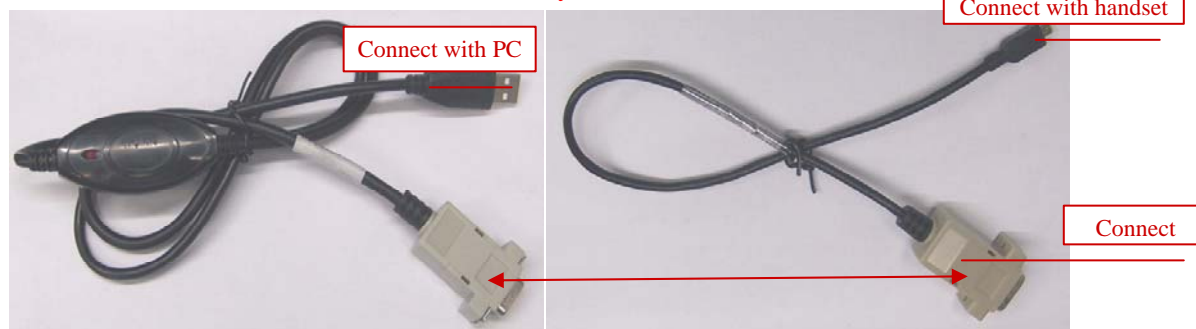
- ◆ Click “Finish” button.



◆ Data cable

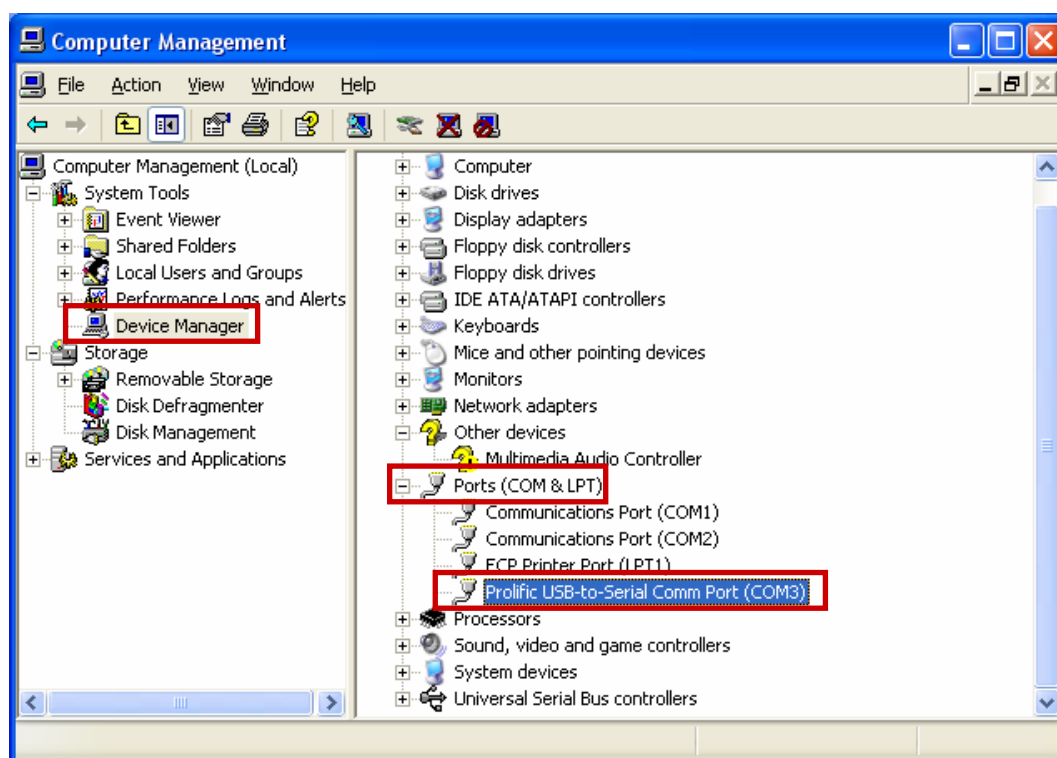
Material code of GSM data cable: IS033211; Material code of GSM data patch cable: IS063280.

**Note: two data cables must be connected correctly.**



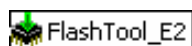
◆ After connecting with data cable, enter device manager and check the port.

Path: **my computer**→**property**→**hardware**→**device manager**

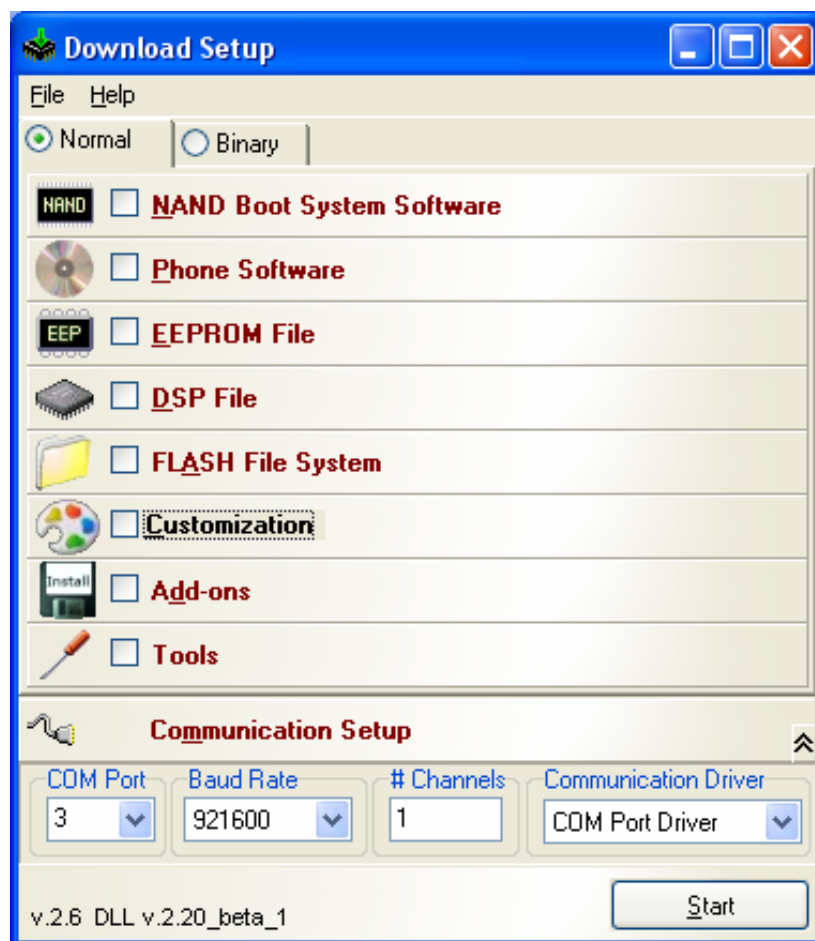


◆ Software Download Platform.

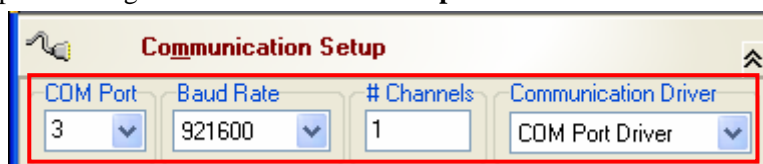
Platform: FlashTool\_E2.exe




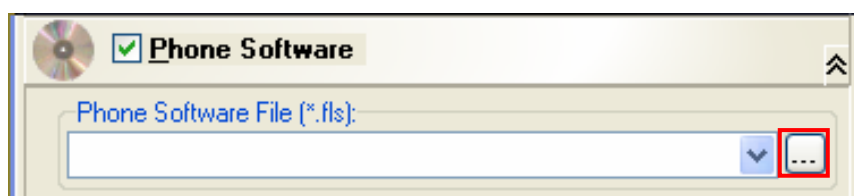
- ◆ Program main interface.



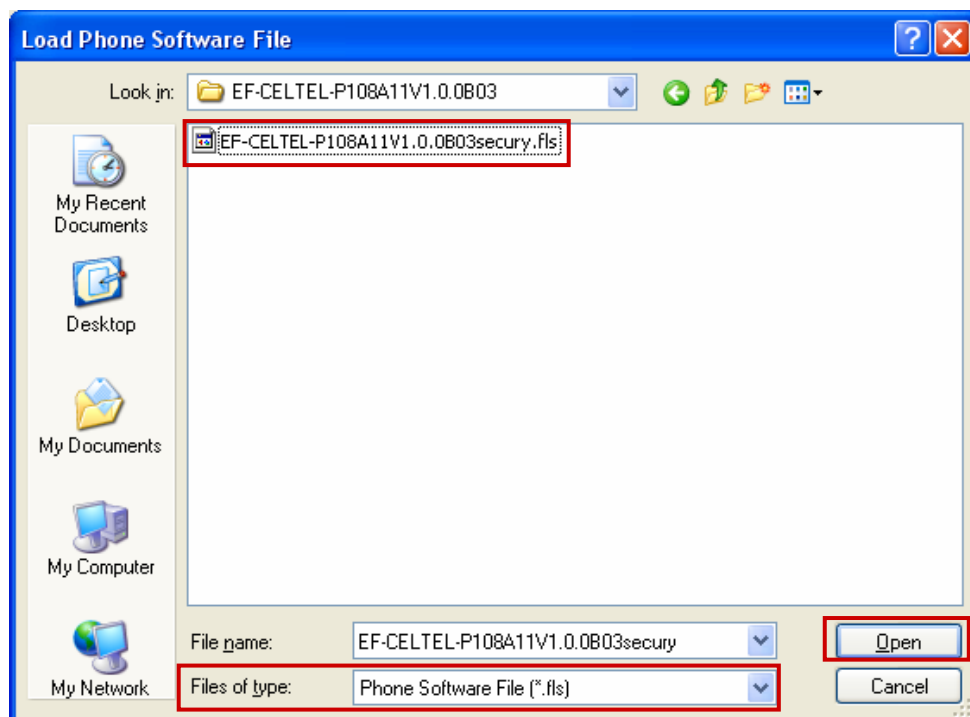
- ◆ Correct option settings of **Communication Setup** are shown below.




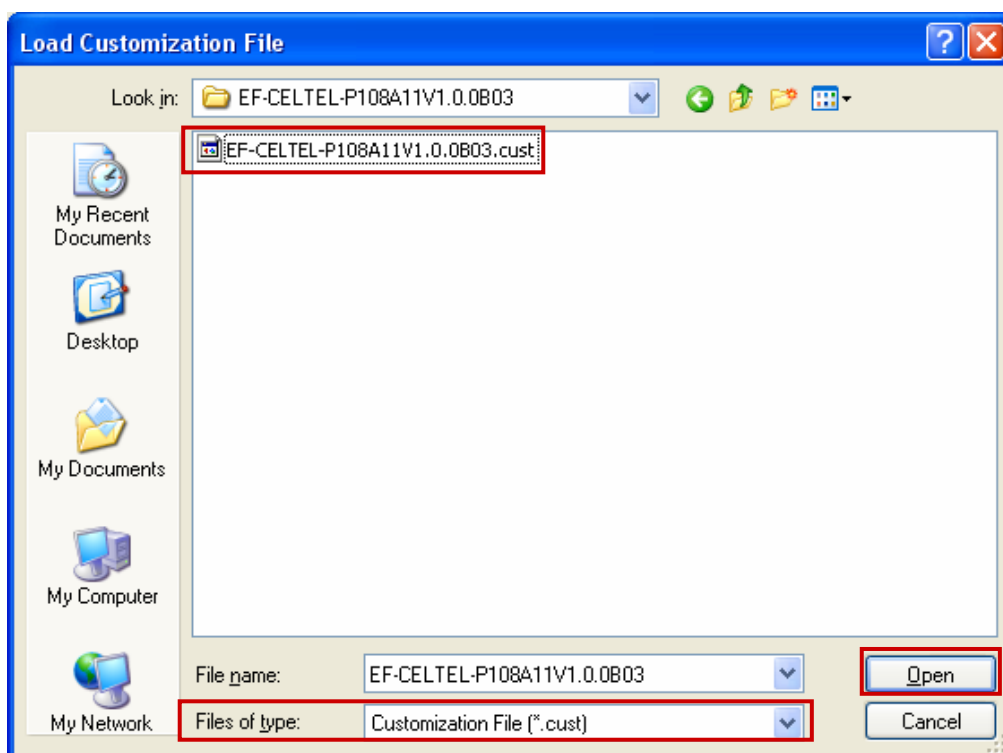
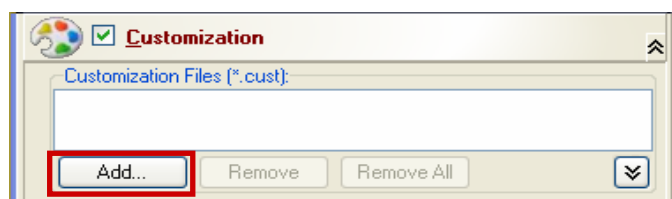
- ◆ Select **Phone Software** option. Click  button and select the software file with the name like \*.fls.



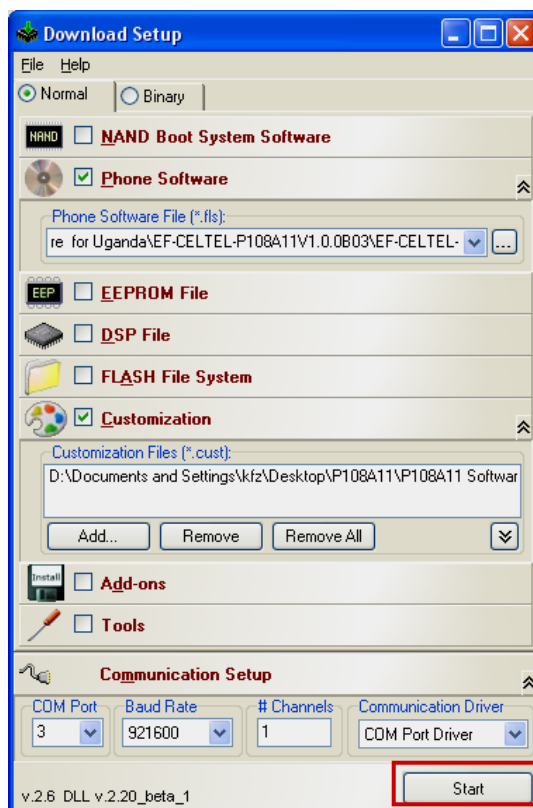




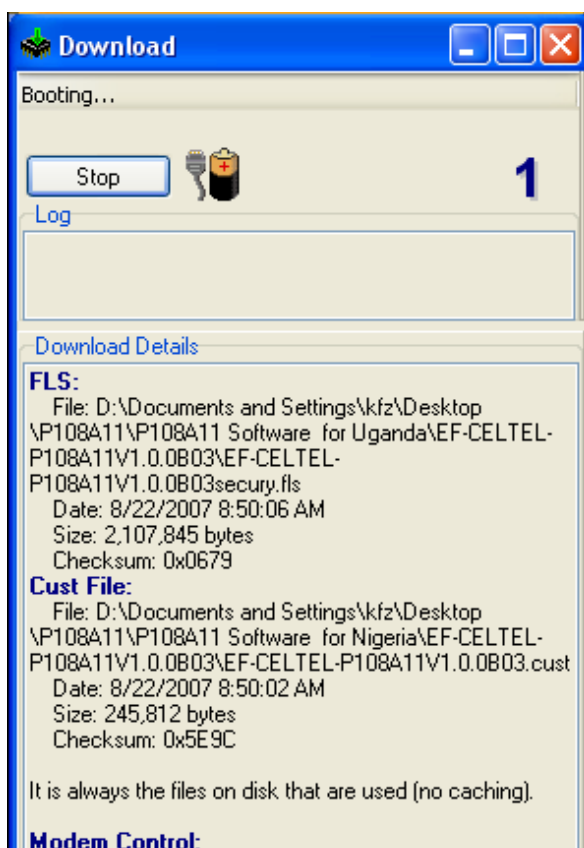
- ◆ Select **Customization** option. Click  button and select the software file with the name like \*.cust.



- ◆ After the above configuration operations, close the software program and open it again. The purpose of this procedure is that the configuration can be saved when the software is closed abnormally.



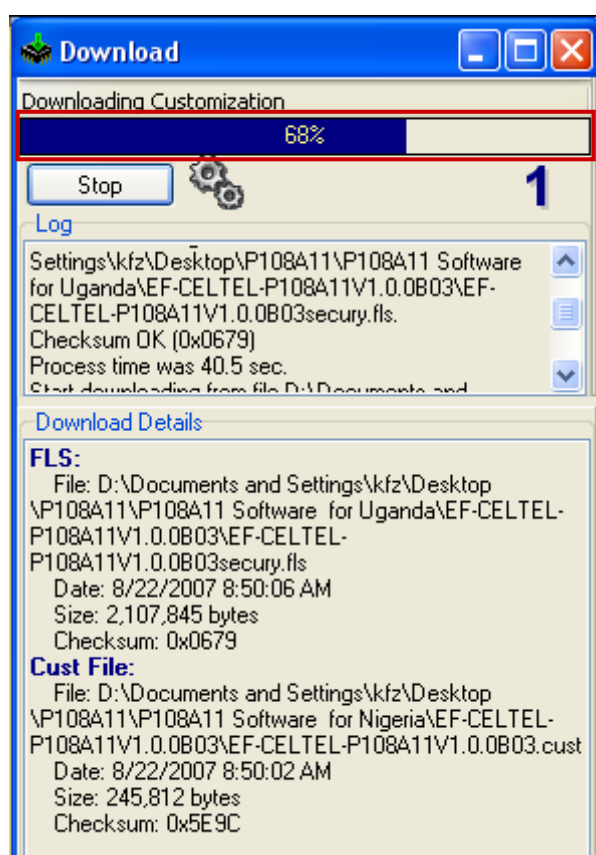
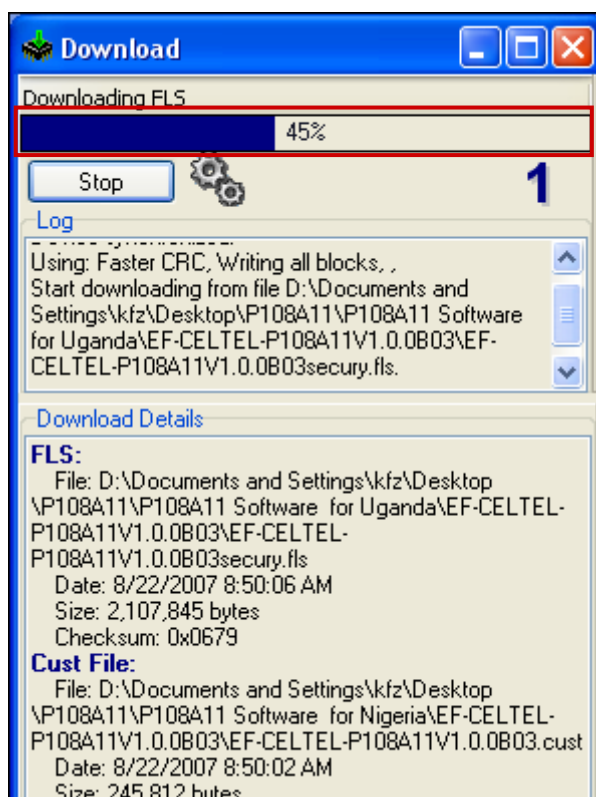
- ◆ Click 'Start' button. Then it will appear this interface.



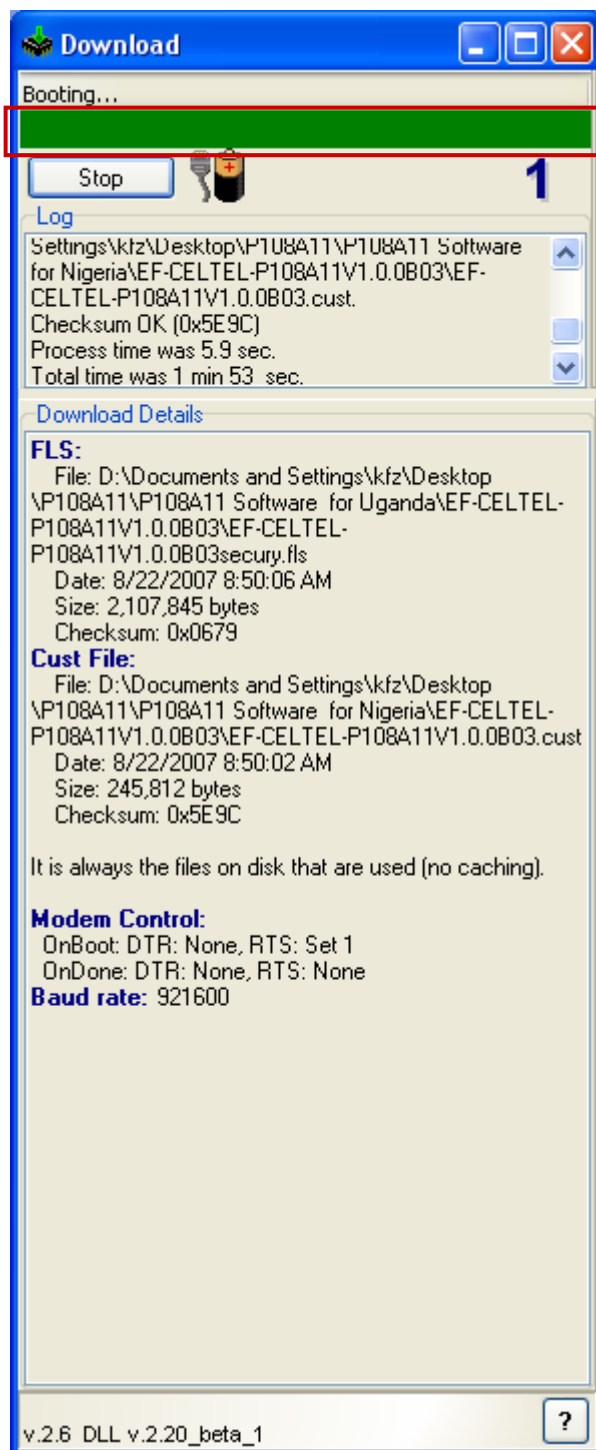
- ◆ Connect with handset and switch on the handset.

Note: the handset must be fixed the battery during downloading software. Click start first, and then connect with handset.

- ◆ Downloading.

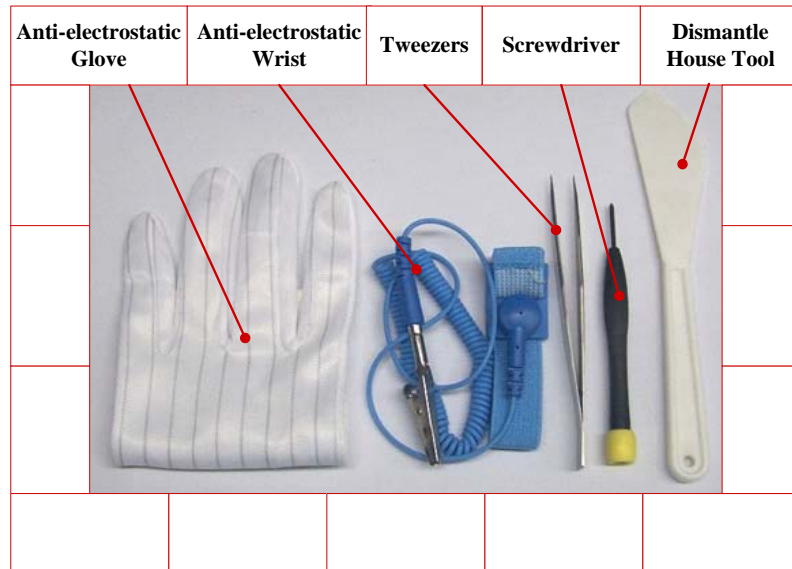


- ◆ Finish.



## 2.2 Disassembly Flow

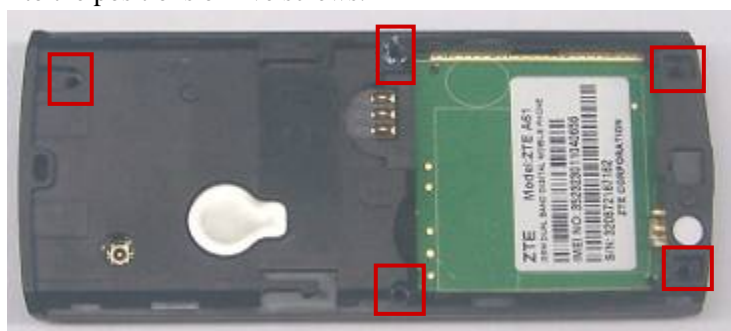
- ◆ Tools Used to Disassemble.



- ◆ Take out the battery. Pay attention to the positions of connecting points.



- ◆ Pay attention to the positions of five screws.



- ◆ Separate the front and back covers with dismantle house tool.
- ◆ Pay attention to the positions of the locks.



- ◆ The front and back covers after separating.  
**Note:** Three points of MIC face to the top. Ensure that MIC and connecting points connect well.



- ◆ Take out the MIC with tweezers.



- ◆ Take out the receiver with tweezers.

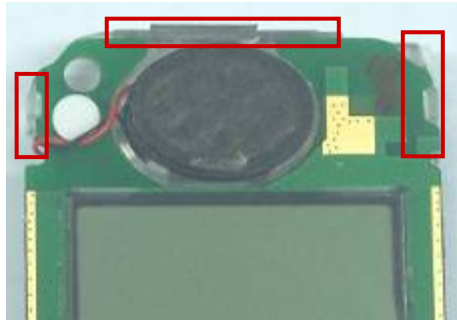


- ◆ Take out the motor with tweezers.



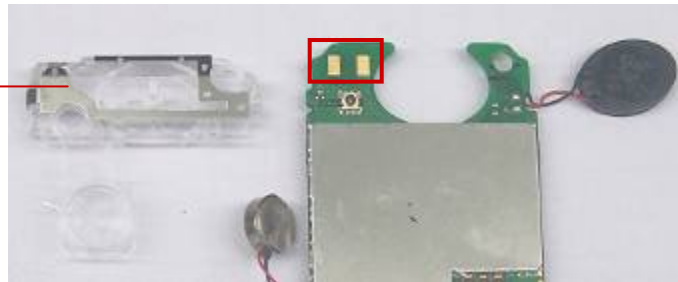


- ◆ Pay attention to the positions of the locks during separating antenna.

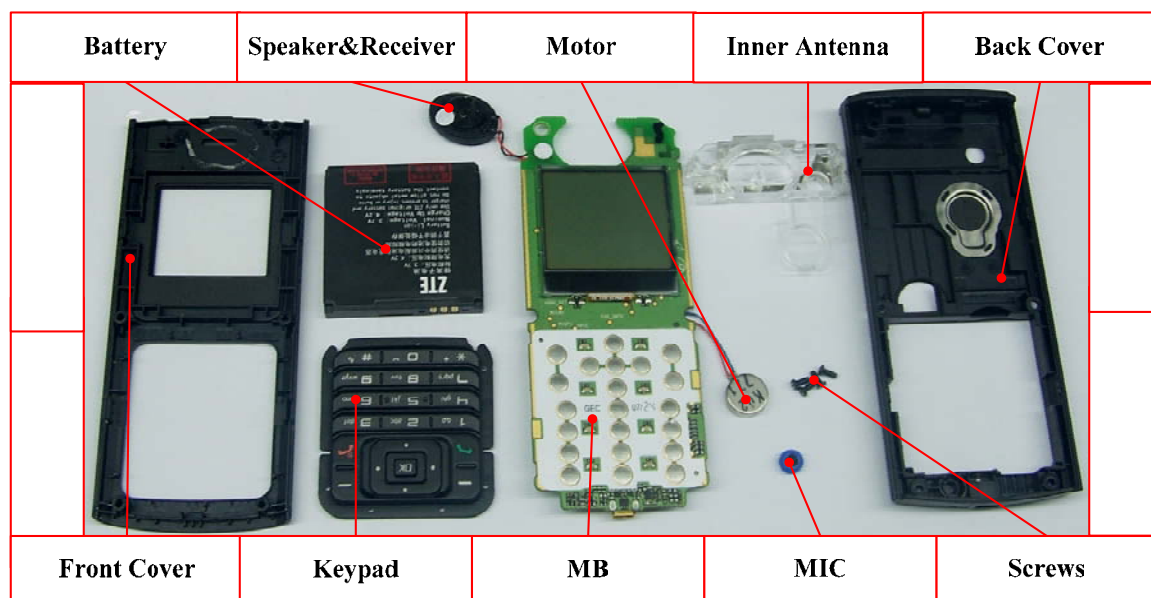


- ◆ Pay attention to the positions of antenna points.
- ◆ Ensure that the antenna and connecting points connect well.

**Inner Antenna**

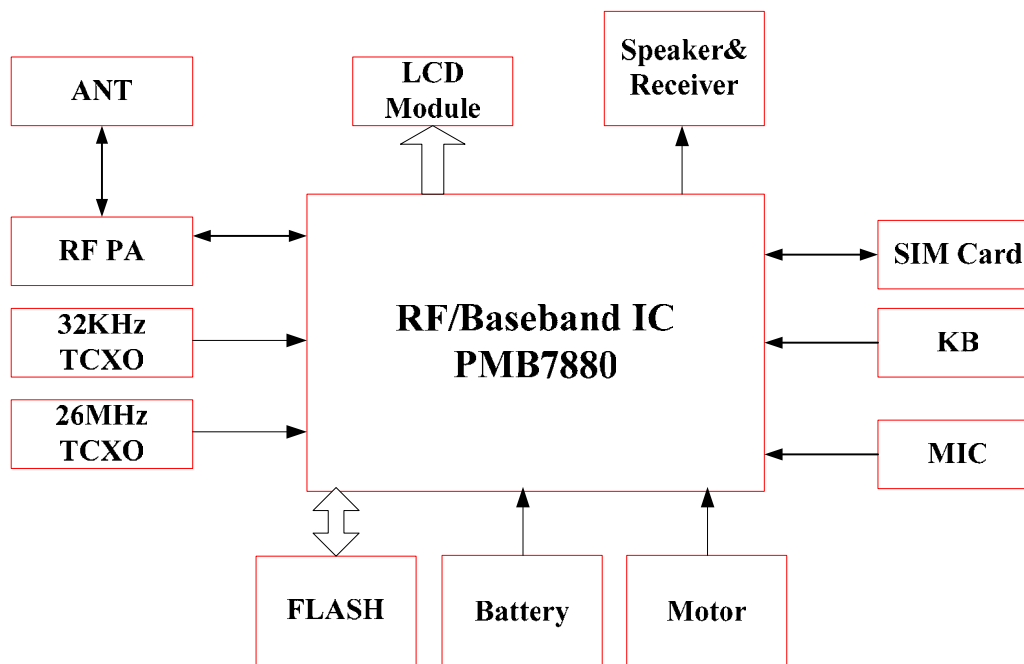


## 2.2 Composing

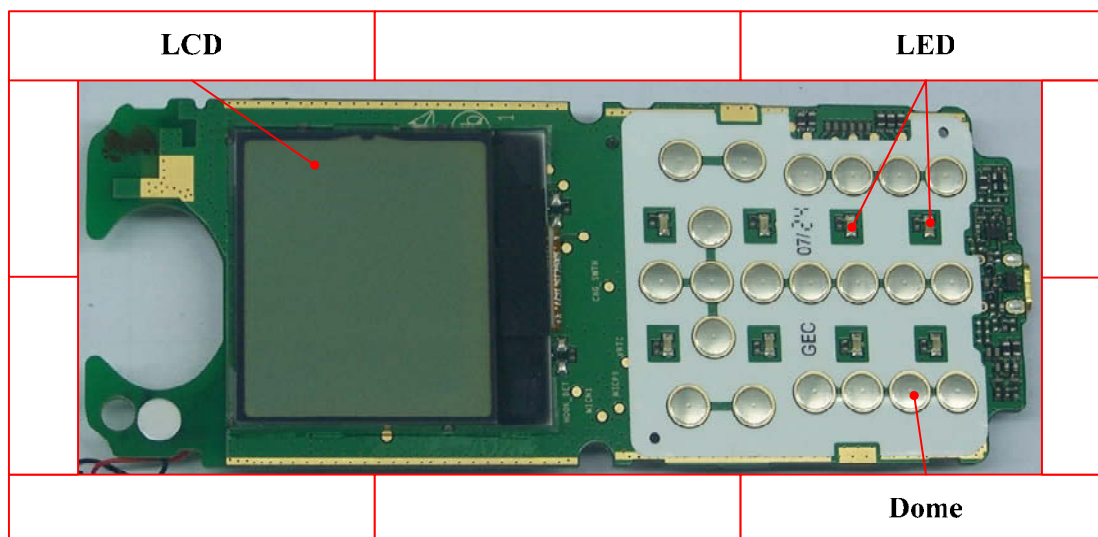




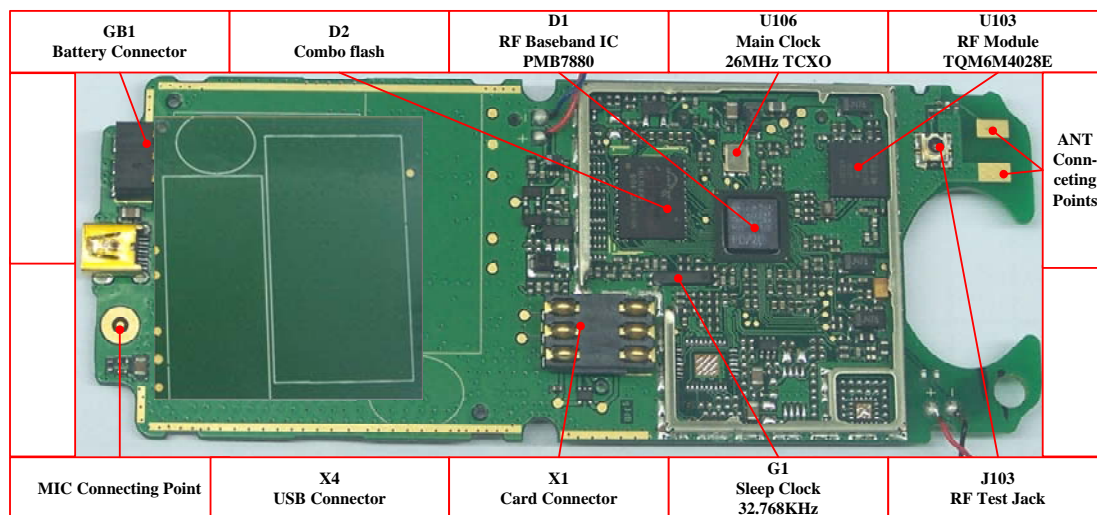
## 2.3 Block Diagram



## 2.4 Basic Device Distributing



MB Top Distributing



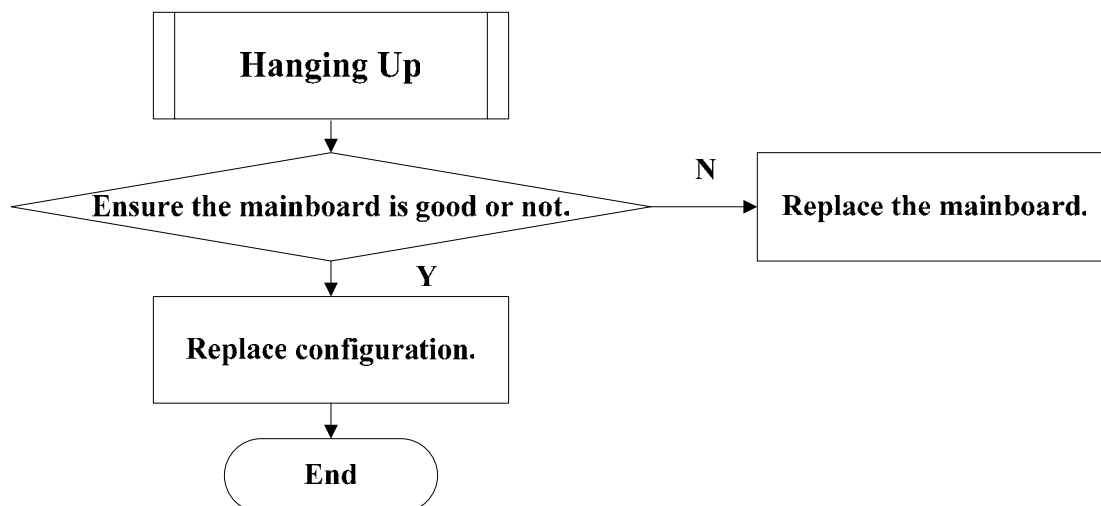
MB Bottom Distributing

### 3 Flow Chart of Familiar Troubleshooting (Level 1)

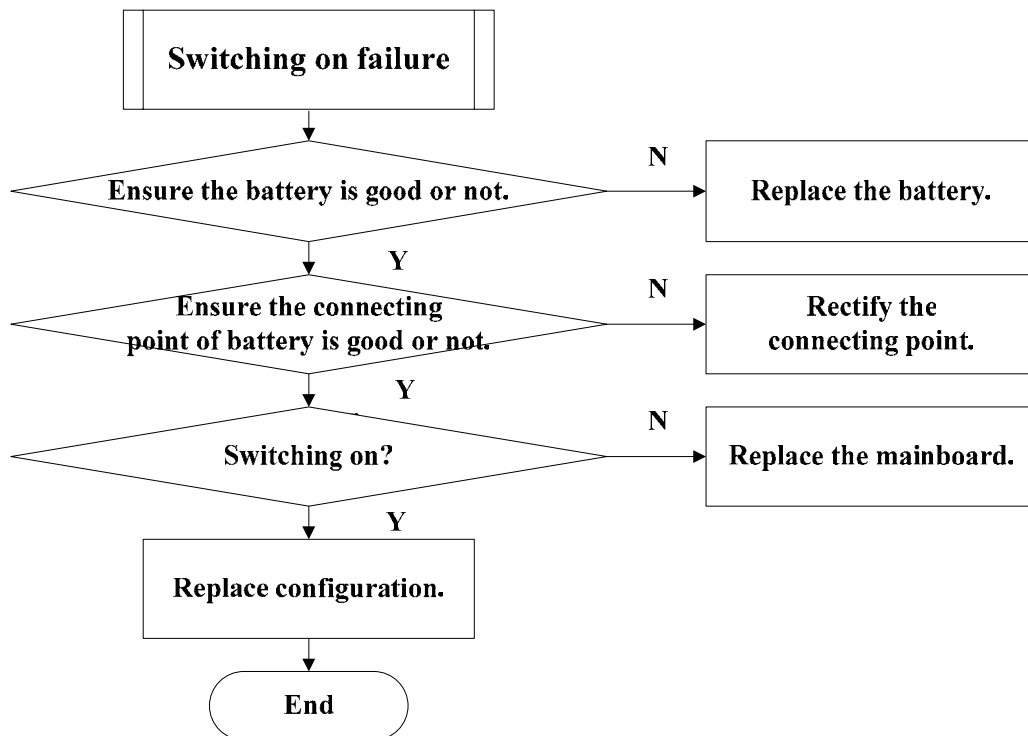
#### 3.1 Components Failure

Please replace the faulty components referring to the disassembling steps.

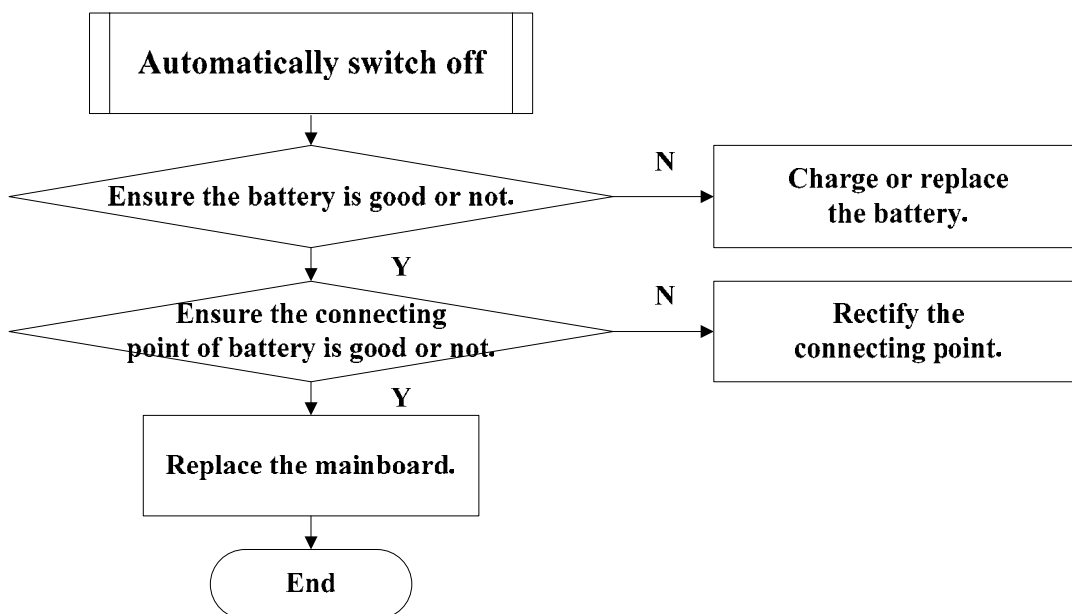
#### 3.2 Hanging



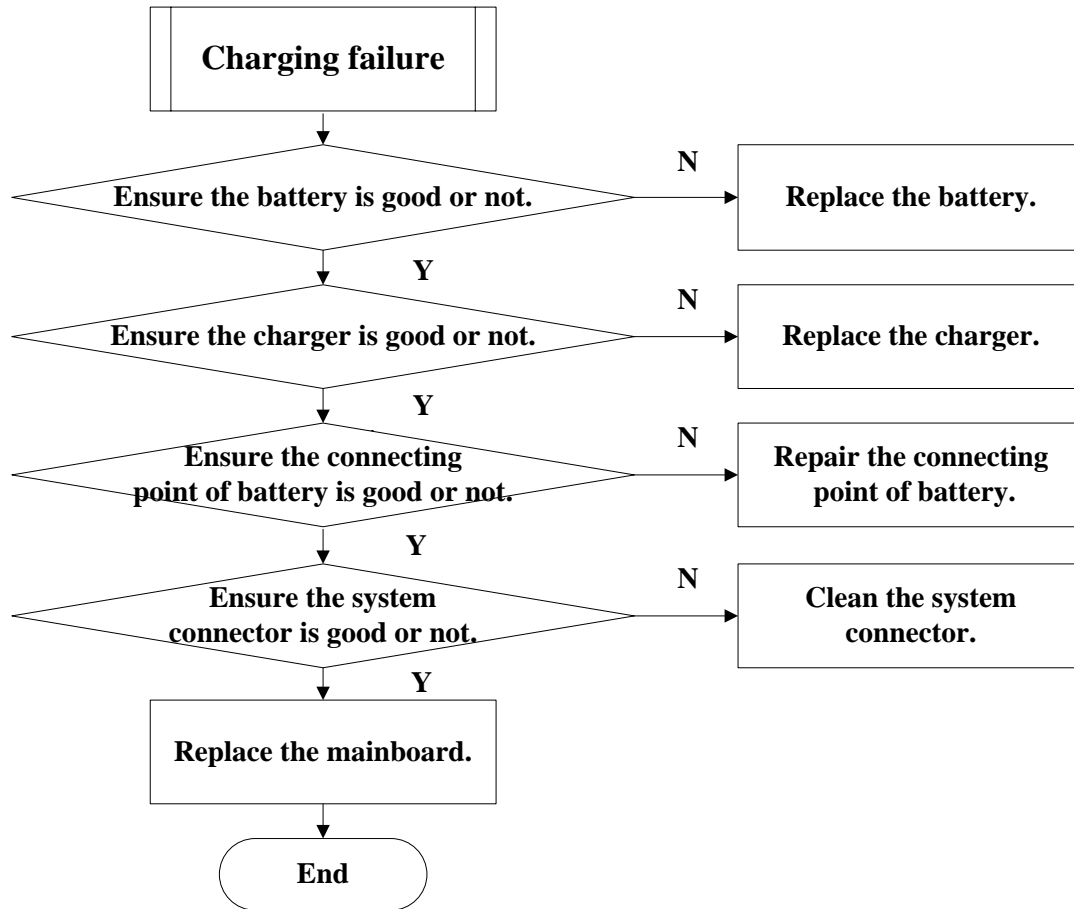
### 3.3 Switching On Failure



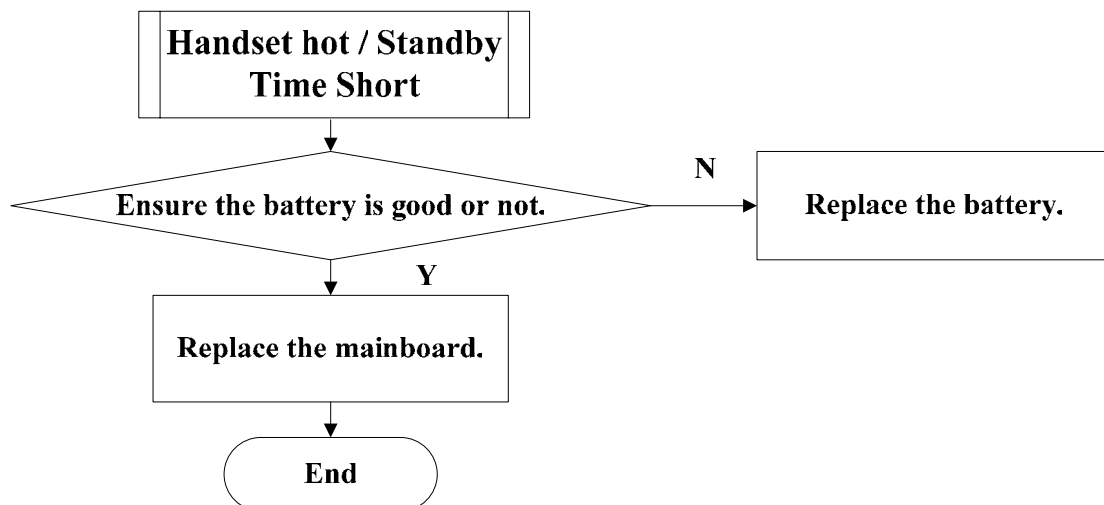
### 3.4 Automatically Switch Off



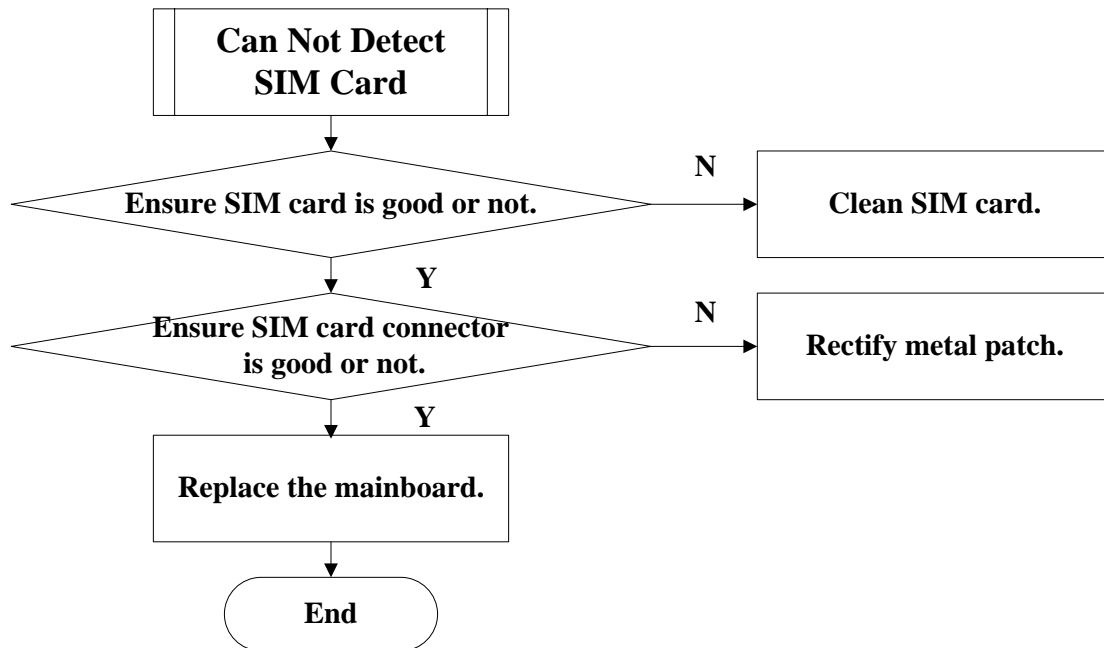
### 3.5 Charging Failure



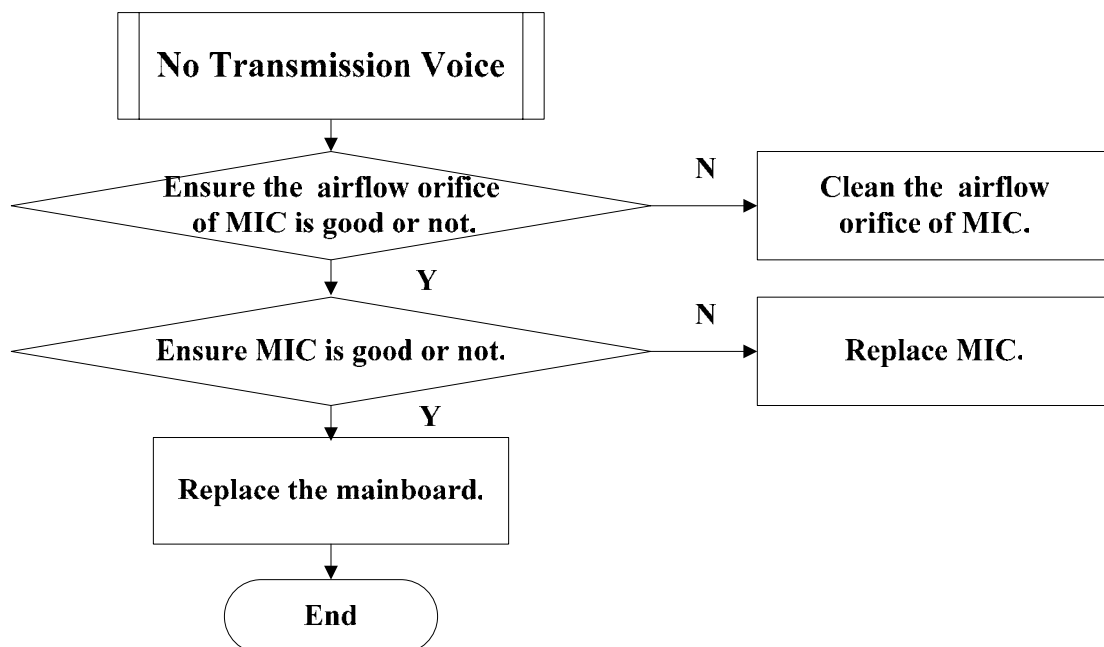
### 3.6 Handset Hot



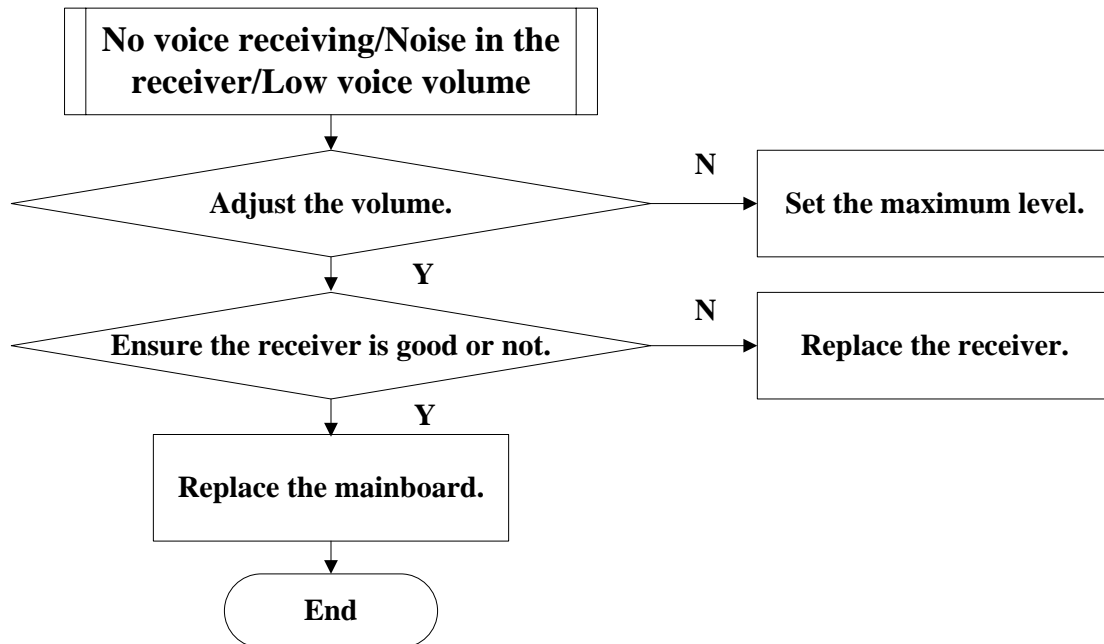
### 3.7 SIM Card Failure



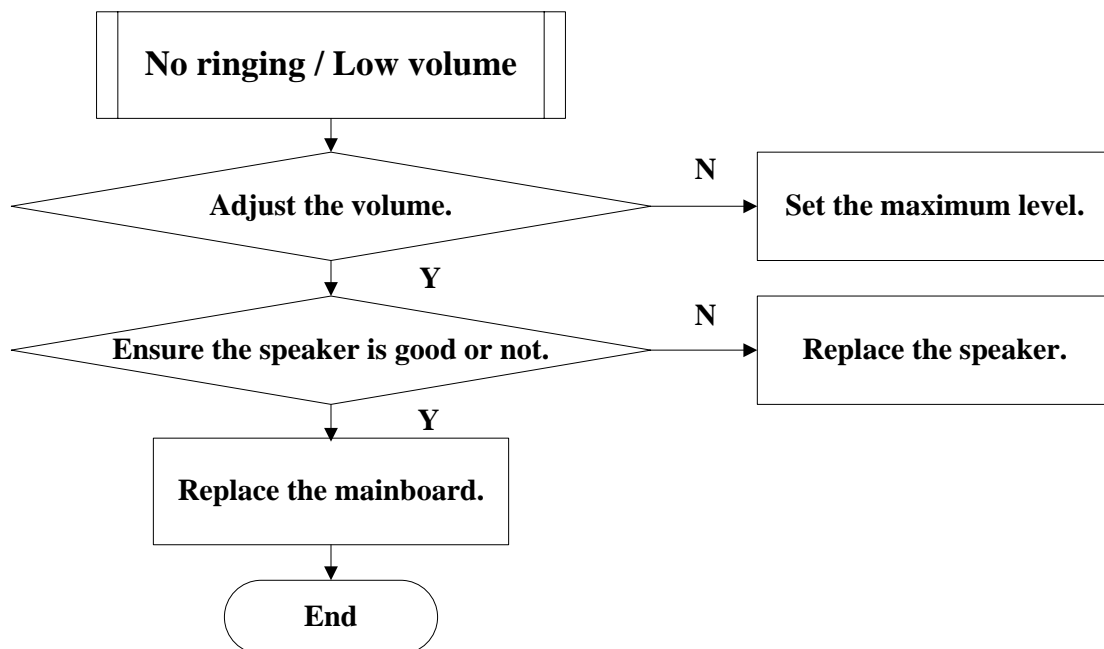
### 3.8 No Transmission Voice



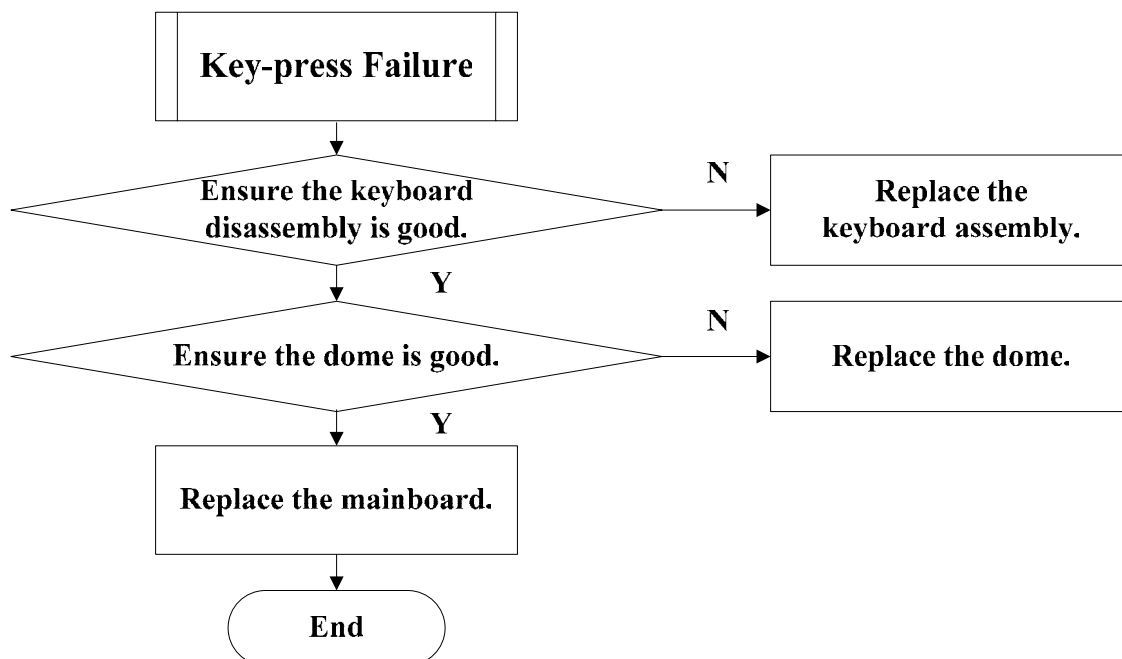
### 3.9 No voice receiving/Noise in the receiver/Low voice volume



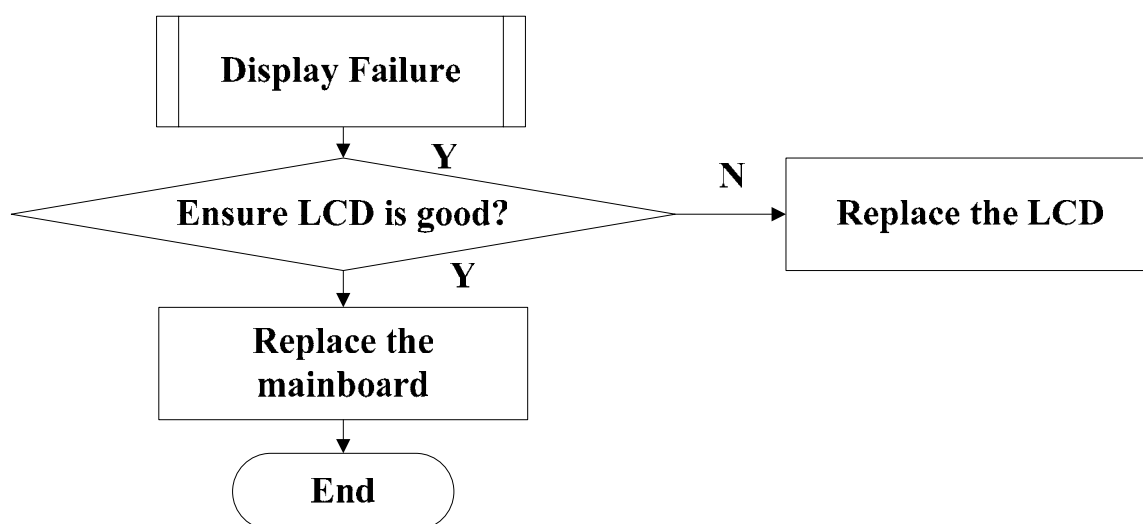
### 3.10 No ringing /Low volume



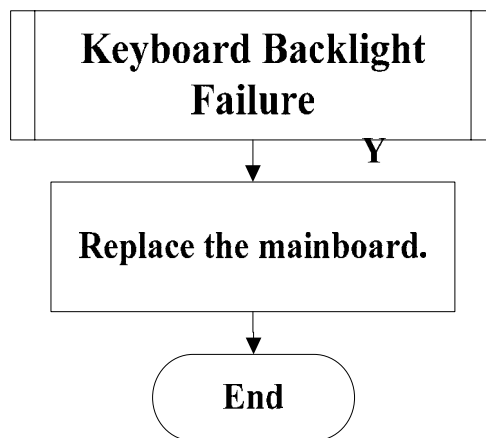
### 3.11 Key-press Failure



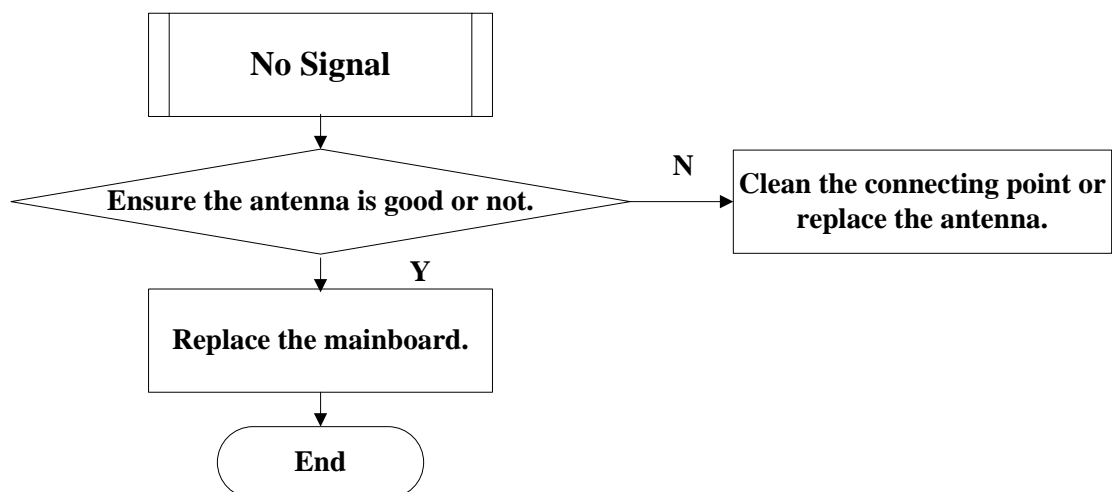
### 3.12 Display Failure



### 3.13 Key Backlight Failure

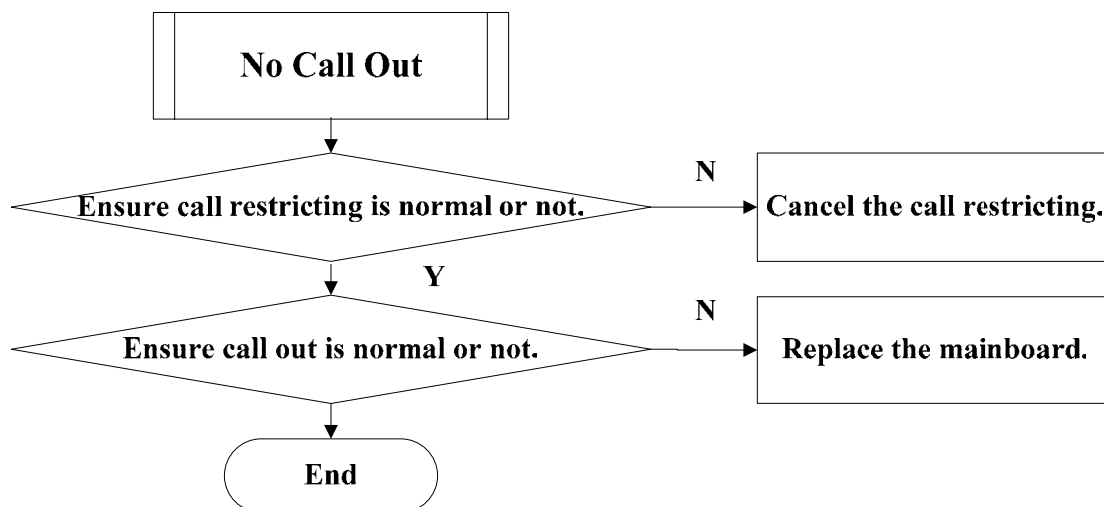


### 3.14 No Signal

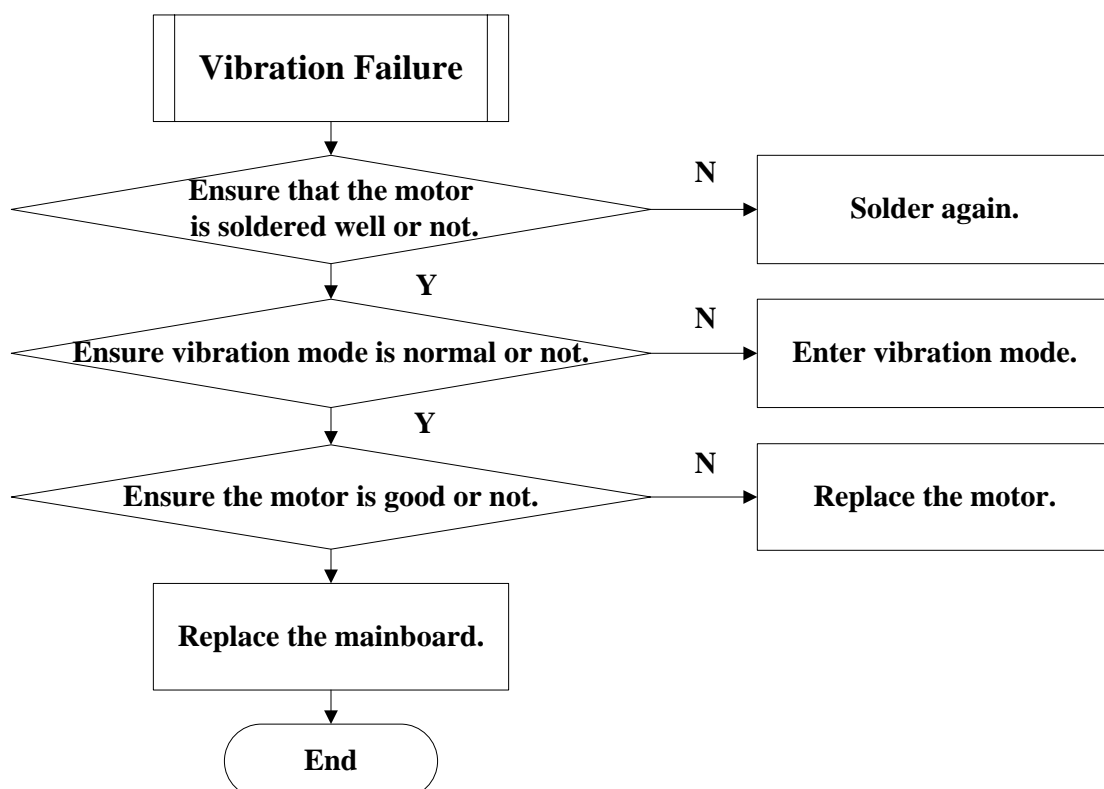




### 3.15 No Call Out



### 3.16 Vibration Failure



## 4 Parts List

P108A11GSM Dual Frequency Digital Mobile Phone After-sales Parts Lists		
No.	P/N	Part Name
1	26708250001	P108A5 Main Board Subassembly
2	055401002643	P108A11 Front Cover Subassembly
3	055401002644	P108A11 Back Front Cover
4	055402000756	P108A11 Keypad Subassembly
5	050603100136	P108A3 Antenna Subassembly
6	055403100146	P108A11 Lens
7	056465000082	V767 Screw
8	035030100172	P108A1 LCD modules
9	035040300038	MIC
10	035040100040	Speaker& Receiver
11	035070100040	Motor

Note: This is the main parts list. If you need a detail one, please apply it from local after-sales service manager.