

Document Title: A135 GSM Dual Frequency Digital
Mobile Phone After-sales Services
Manual (Level 1)

All 29 Pages

(Cover Included)

Drafted Li Ye\Kuang Fengzhi

Checked Ren Zonghao

Signed _____

Standardize

Approved _____

ZTE CORPORATION

Modification Record

Document No.	Version	Drafted	Date	Reason	Main Modification Points
		Li Ye\ Kuang Fengzhi	2007-12-22	None	None
<p>Notice :</p> <p>1、 Once you modify the document, you need to fill in the table.</p> <p>2、 Please fill “none” in the modification reason and main modification points during the initial document making.</p>					

CONTENT

1. PRODUCT OVERVIEW.....	1
1.1 STANDARD CONFIGURATION.....	1
1.2 SPECIFICATIONS	1
1.3 FEATURE INTRODUCTION	1
1.4 INTERNAL NUMBER	2
2. INTERNAL STRUCTURE AND PRINCIPLE	2
2.1 FUNCTION TEST	2
2.2 SOFTWARE DOWNLOAD	2
2.3 DISASSEMBLING FLOW	14
2.4 COMPONENTS	17
2.5 BLOCK DIAGRAM FOR PRINCIPLE	18
2.6 HARDWARE MATERIAL OBJECT PICTURE.....	18
3. FLOW CHART OF FAMILIAR TROUBLESHOOTING (LEVEL 1)	19
3.1 COMPONENTS FAILURE.....	19
3.2 SWITCHING ON FAILURE.....	19
3.3 HANGING.....	20
3.4 AUTOMATICALLY SWITCH OFF	20
3.5 CHARGING FAILURE.....	21
3.6 HANDSET HOT	21
3.7 SIM CARD FAILURE.....	22
3.8 NO TRANSMISSION VOICE	22
3.9 NO VOICE RECEIVING/NOISE IN THE RECEIVER/LOW VOICE VOLUME	23
3.10 NO RINGING OR LOW VOLUME	23
3.11 KEY-PRESS FAILURE	24
3.12 DISPLAY FAILURE	24
3.13 KEY BACKLIGHT FAILURE	25
3.14 NO SIGNAL	25
3.15 NO CALL OUT.....	26
4. PARTS LIST	26

1. Product Overview

1.1 Standard Configuration

No.	Part Name	Qty
1	Phone Set	1
2	Lithium Ion Battery	1
3	Battery Charger	1

1.2 Specifications

- ◆ Standard: GSM.
- ◆ Dimension: about 41.3mm*100mm*11.4mm.
- ◆ Weight: about 85g (Standard Battery Included).
- ◆ Talk Time: About 2~4 hours.
- ◆ Standby Time: About 80~160 hrs.



1.3 Feature Introduction

- ◆ Zi input method;
- ◆ 16-chord sounds;
- ◆ Any Key Answer;
- ◆ Call minutes prompt;
- ◆ Call record and talk time record;
- ◆ Support STK;
- ◆ Support Calling Identity Delivery (CID) and call connection prompt, etc;
- ◆ Brand new Contextual models (including normal, conference, outdoor and mute contextual models);
- ◆ Various alarm clock (including single alarm clock, daily alarm clock, weekly alarm clock and working day alarm clock);

- ◆ Support short message, new message reading immediately, all short messages deletion and group sending message, etc.

1.4 Internal Number

Internal Model	External Model
P108A9	A135

2. Internal Structure and Principle

2.1 Function Test

Function Test

- ◆ Input "*983*0#" instruction to enter test mode.
- ◆ Check LCD: LCD displays full black screen and then full white screen. Check if there are faulty pixel points, faulty lines or other disharmony pixel points.
- ◆ Keypad test: Later keypad test appears, testing each key. Pay attention to check if each key can display the corresponding characters. It is required that the user has a sense of switching and uniform exertion.
- ◆ Ring tone: check the ring tone for abnormality, cacophony and miscellaneous.
- ◆ Audio Loop Test: Blow to MIC to check if the rustle sound can be heard.
- ◆ After these tests, press **Back** key to exit test mode.

IMEI Number Check

- ◆ Input "*#06#" instruction. Check if IMEI number displaying on the phone is consistent with that on the label of the phone set.

Software Version Check

- ◆ Input "*983*839#" instruction. Check if the phone's FLASH software version displays and if this version is consistent with the updated one (the latest version).

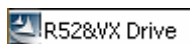
2.2 Software Download

- ◆ About software download

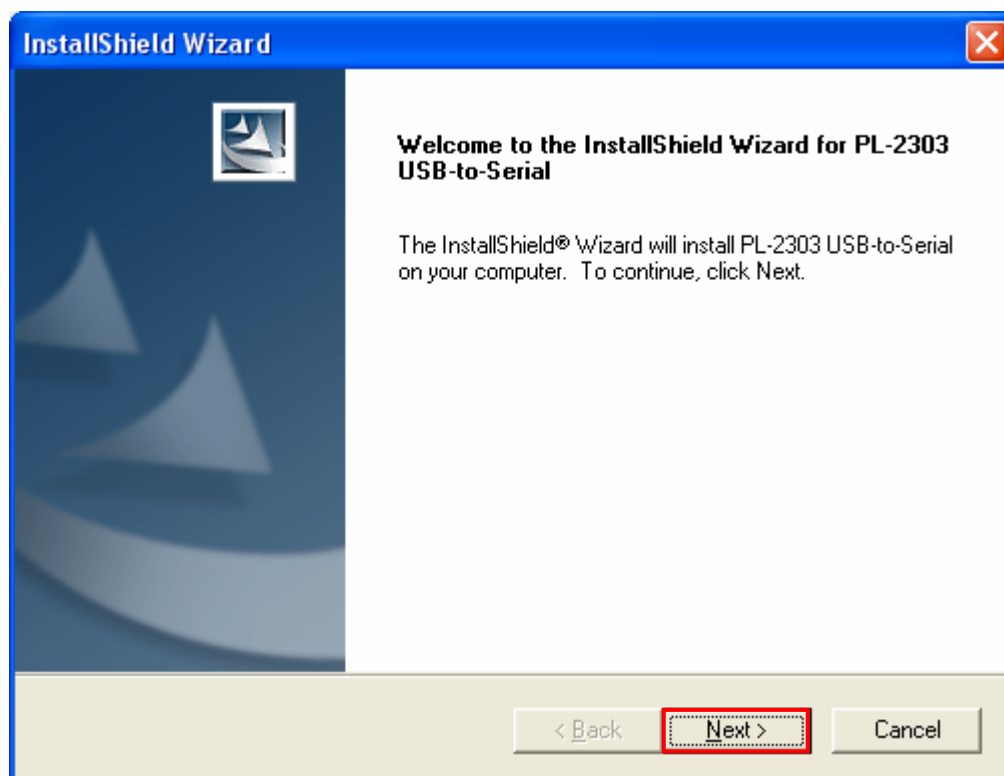
Every handset sent to repair must be updated to the latest version.

Make ensure that the mobile phone is switched on and connects to the computer successfully, and its battery must be installed when its software is downloaded. During the download process, the mobile phone can not be powered off. And it could not be removed until software download finishes and PASS identification appears. Otherwise, the mobile phone can not be switched on.

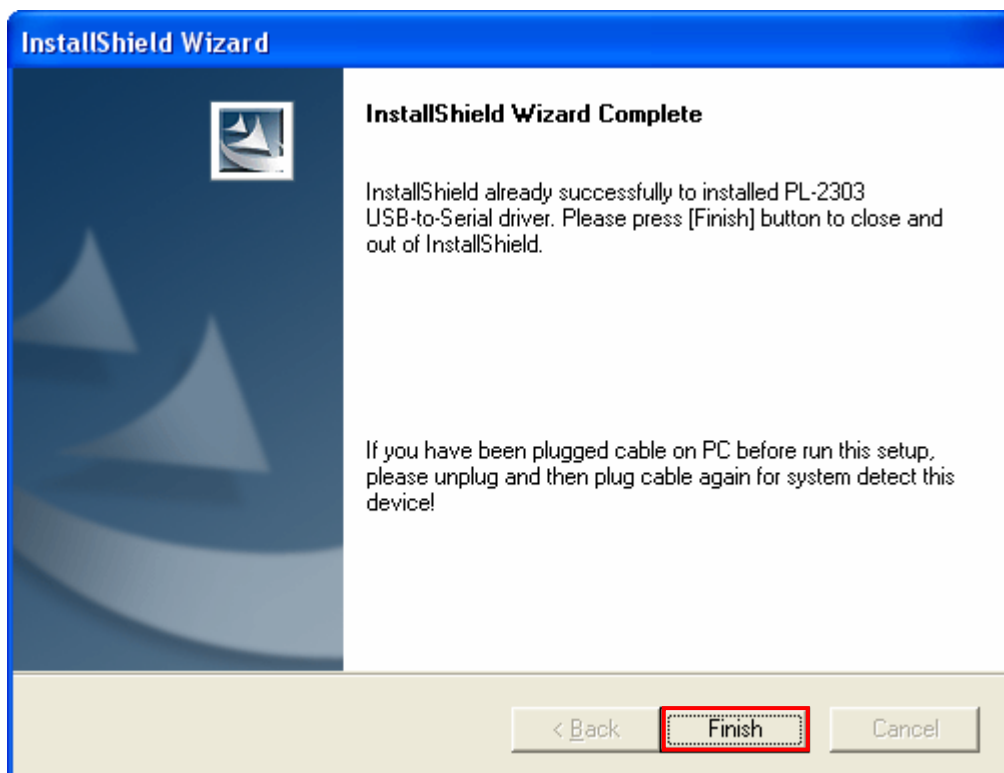
- ◆ Install drive of data download cable. Double click USB drive icon to perform driver installation.



- ◆ Click **Next**.



- ◆ Click **Finish**. Driver installation of data download cable is completed.



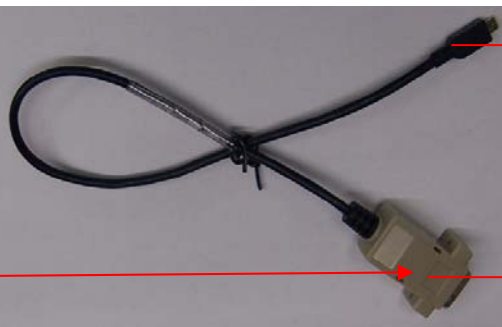
- ◆ Material code of GSM data cable: IS033211; Material code of GSM data patch cable: IS063280.

Note: two data cables must be connected correctly.

Connecting
the
computer



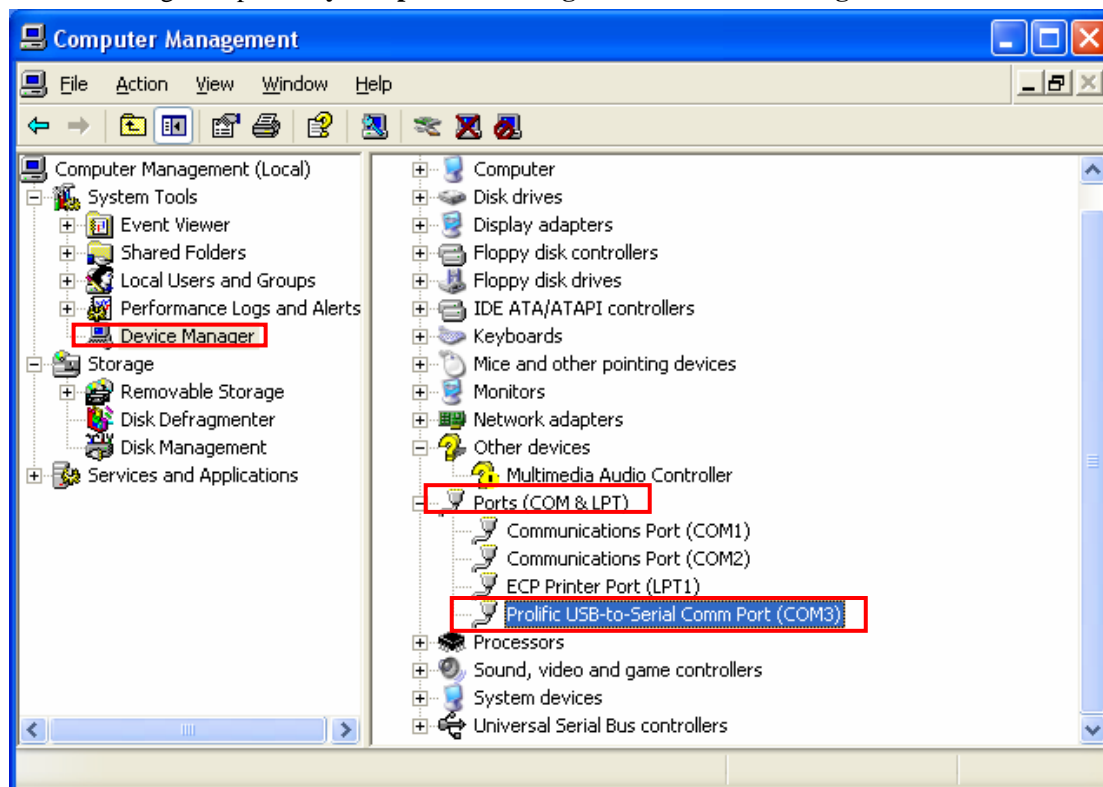
Connecting
the mobile
phone



Connecting
with each
other

- ◆ After connection, check the serial port.

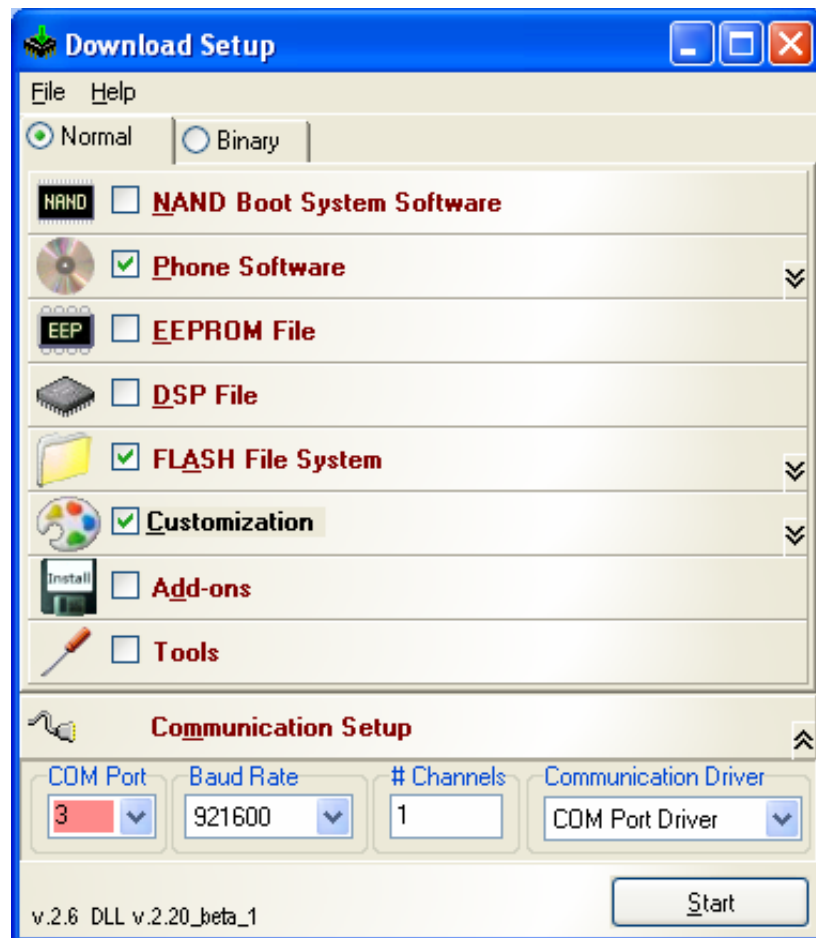
Check it though the path: **My computer > Management > Device Management > Port.**



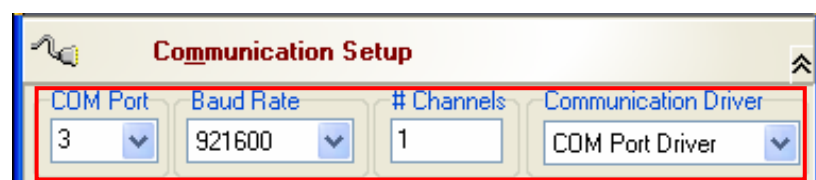
- ◆ Install download platform: FlashTool_E2.exe.




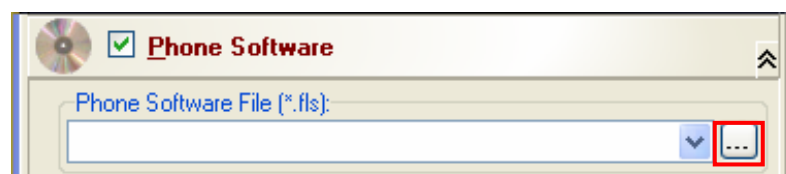
- ◆ Main interface of the software download setup.

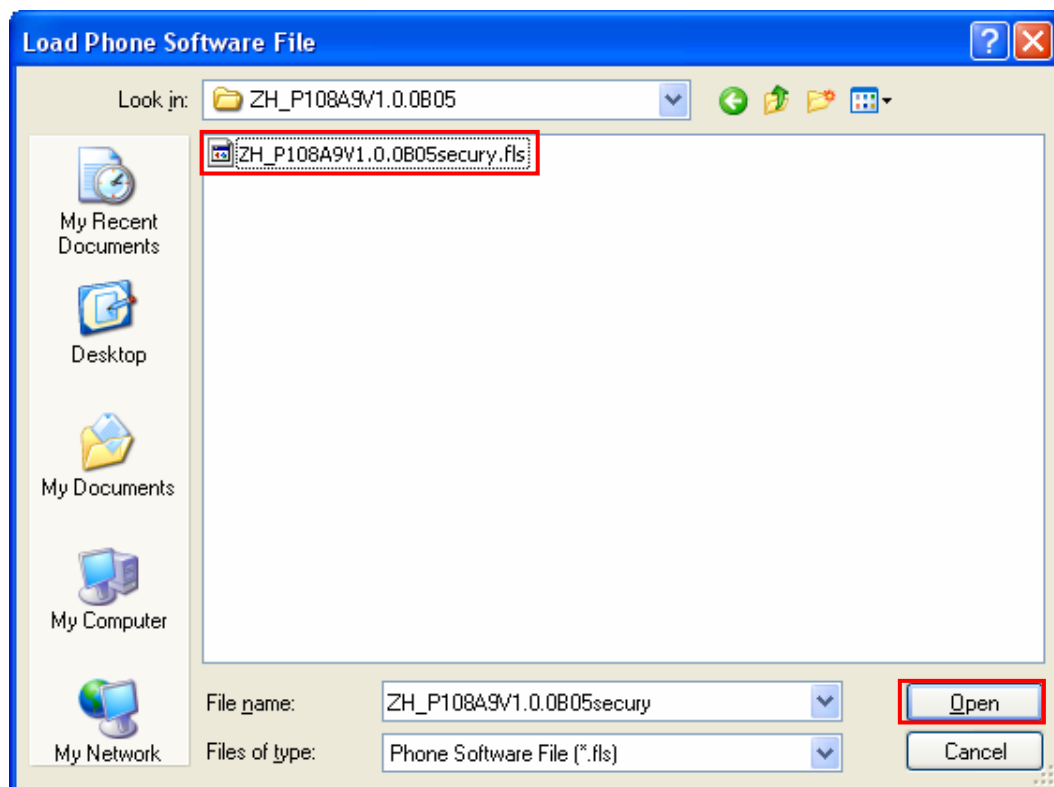



- ◆ Correct option settings of **Communication Setup** are shown in the following figure:

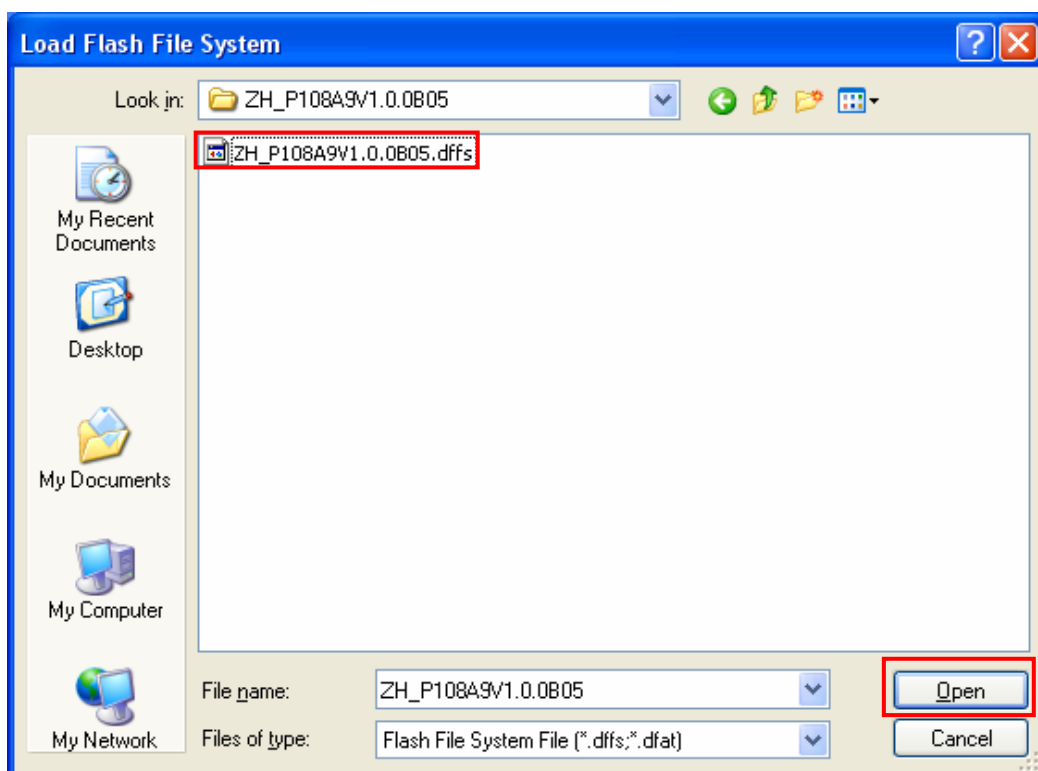
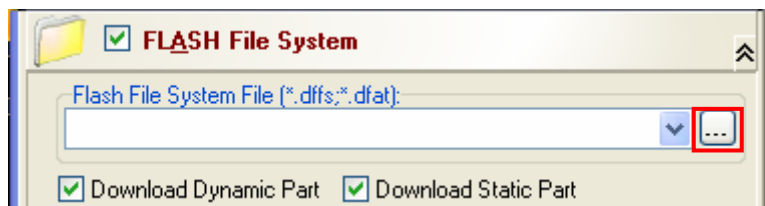


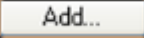
- ◆ Select **Phone Software** option. Click  button and select the software file with the name like *.fls.

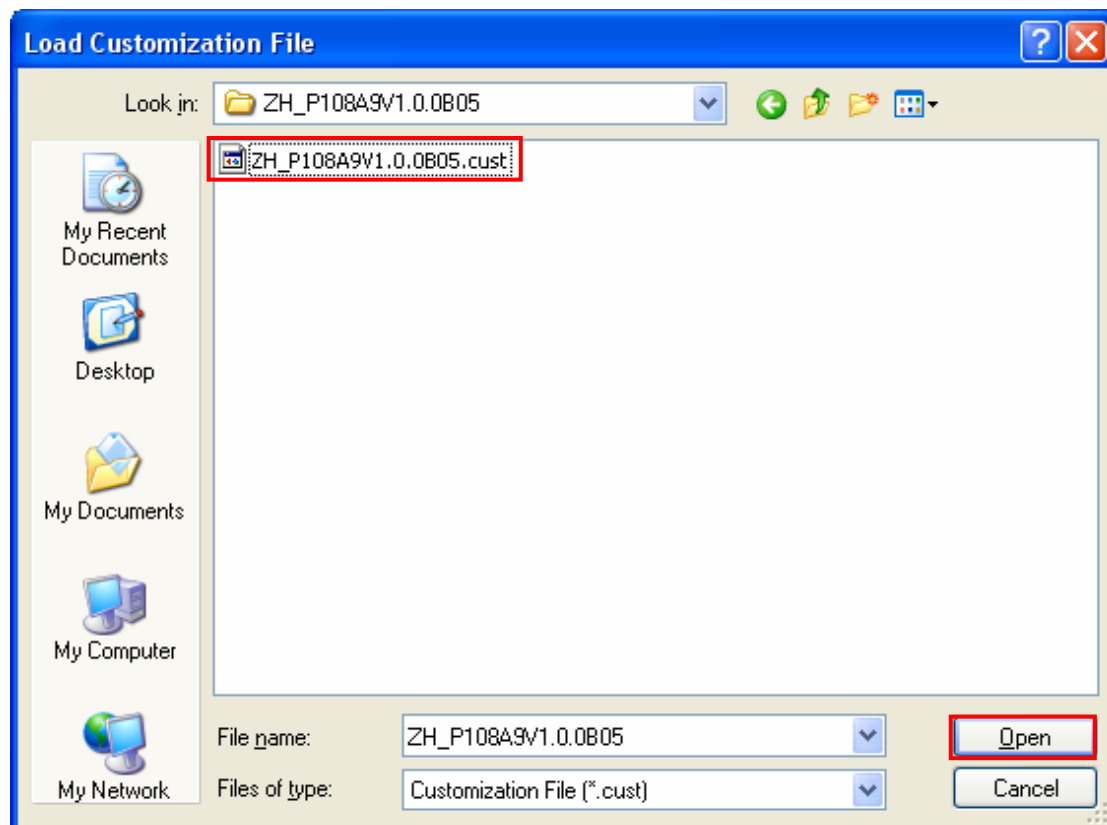
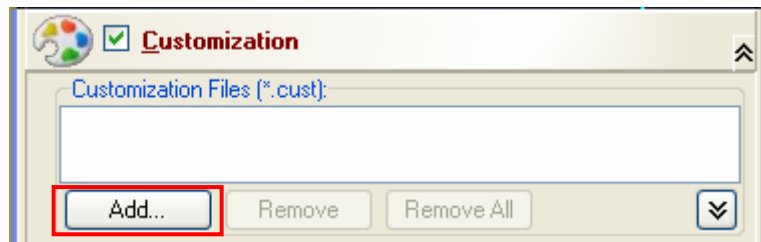




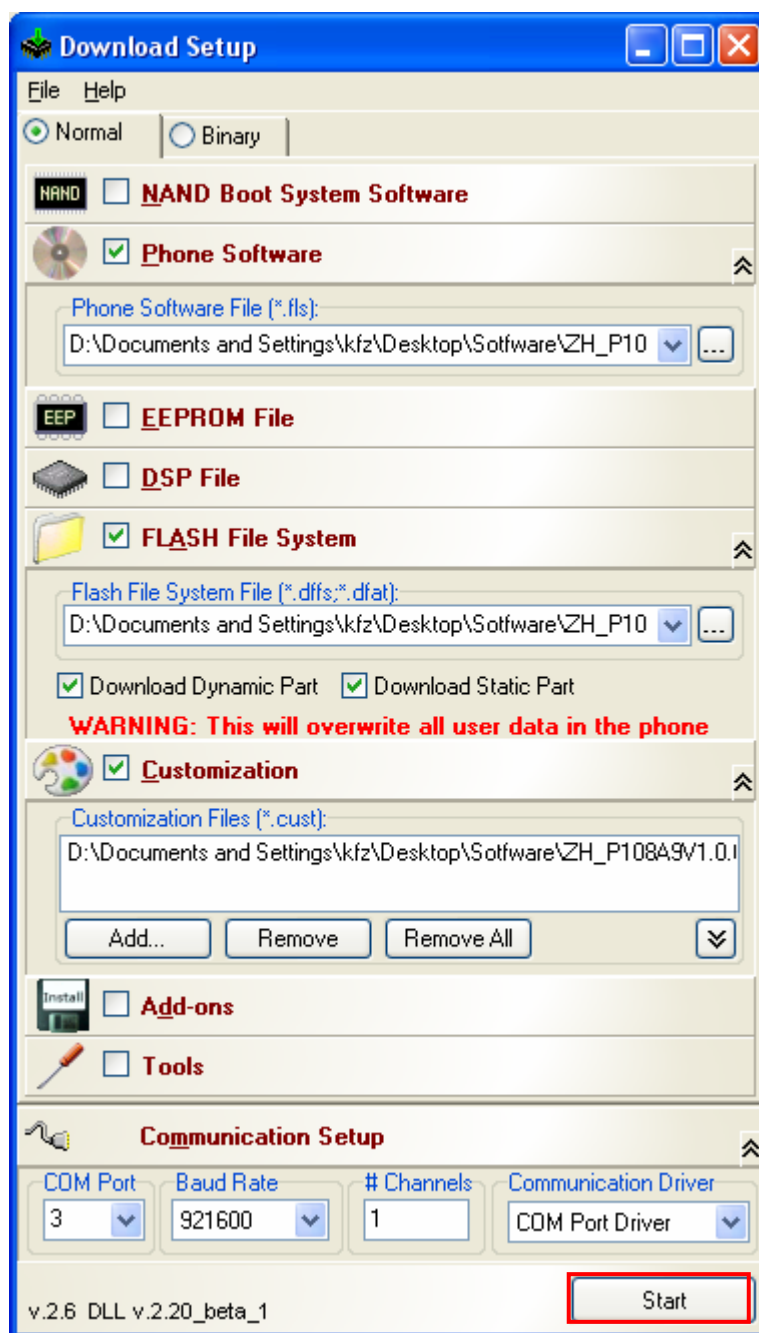
- ◆ Select **FLASH File System** option. Click  button and select the software file with the name like *.dffs.



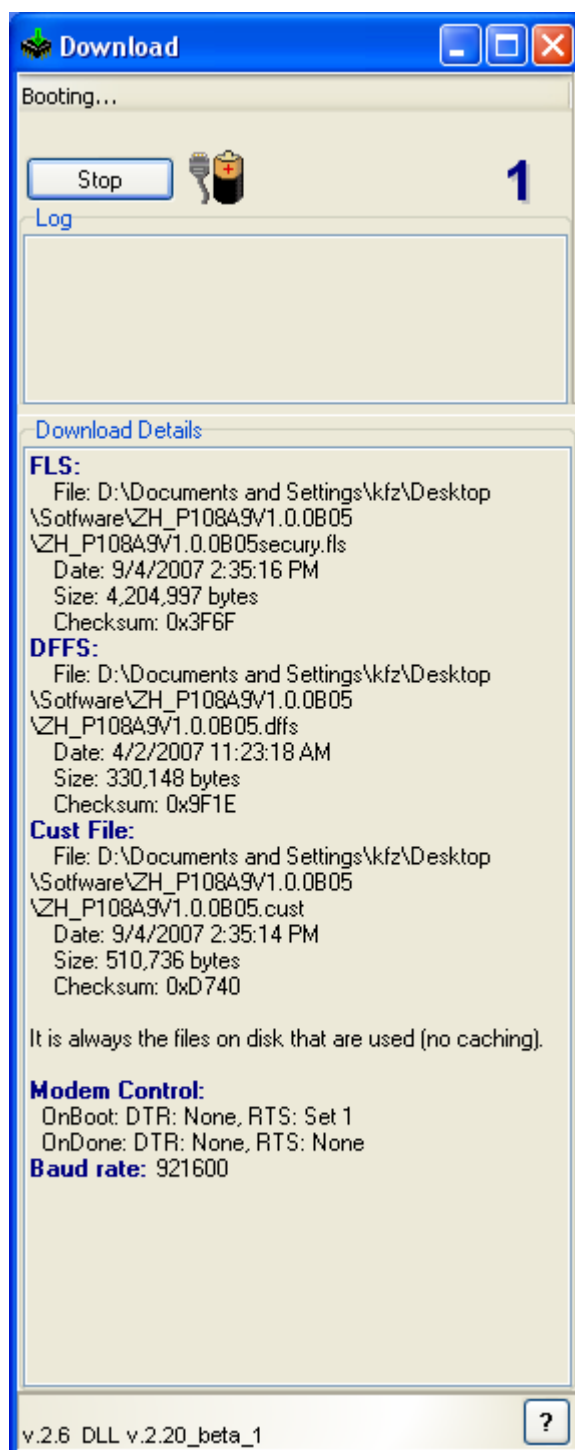
- ◆ Select **Customization** option. Click  button and select the software file with the name like *.cust.



- ◆ After the above configuration operations, close the software and open it again.
The purpose of doing this is that the configuration can be saved when the software is closed abnormally.

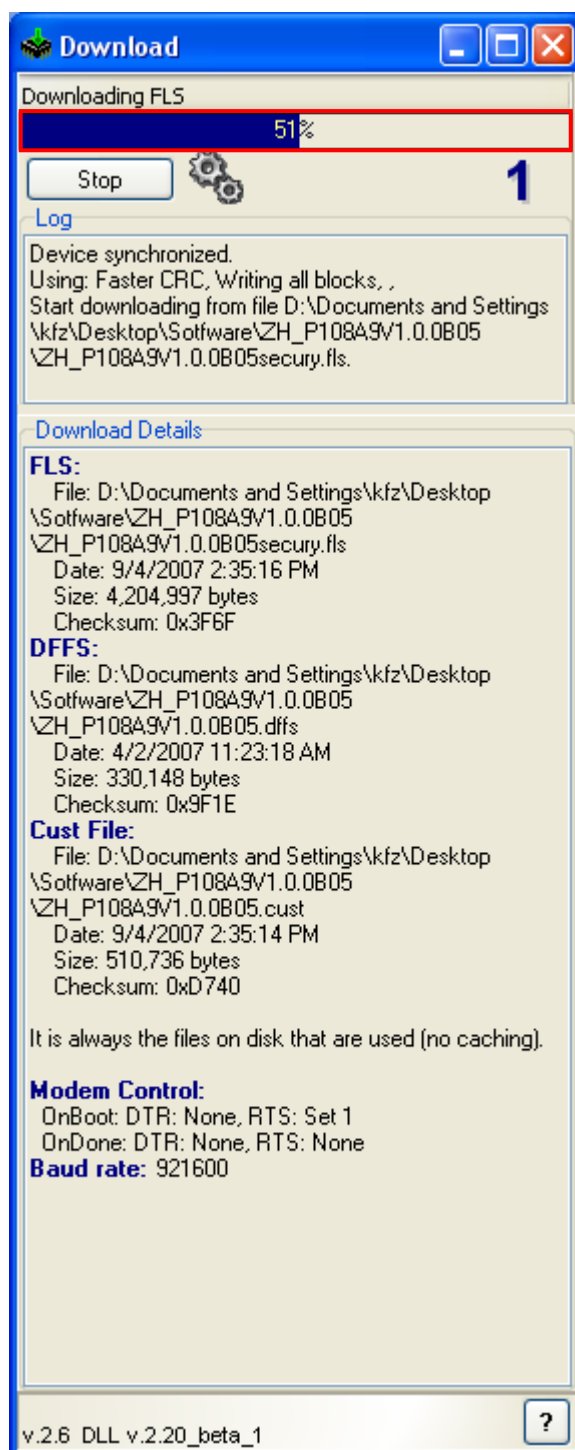


- ◆ Click **Start**, the following interface appears:

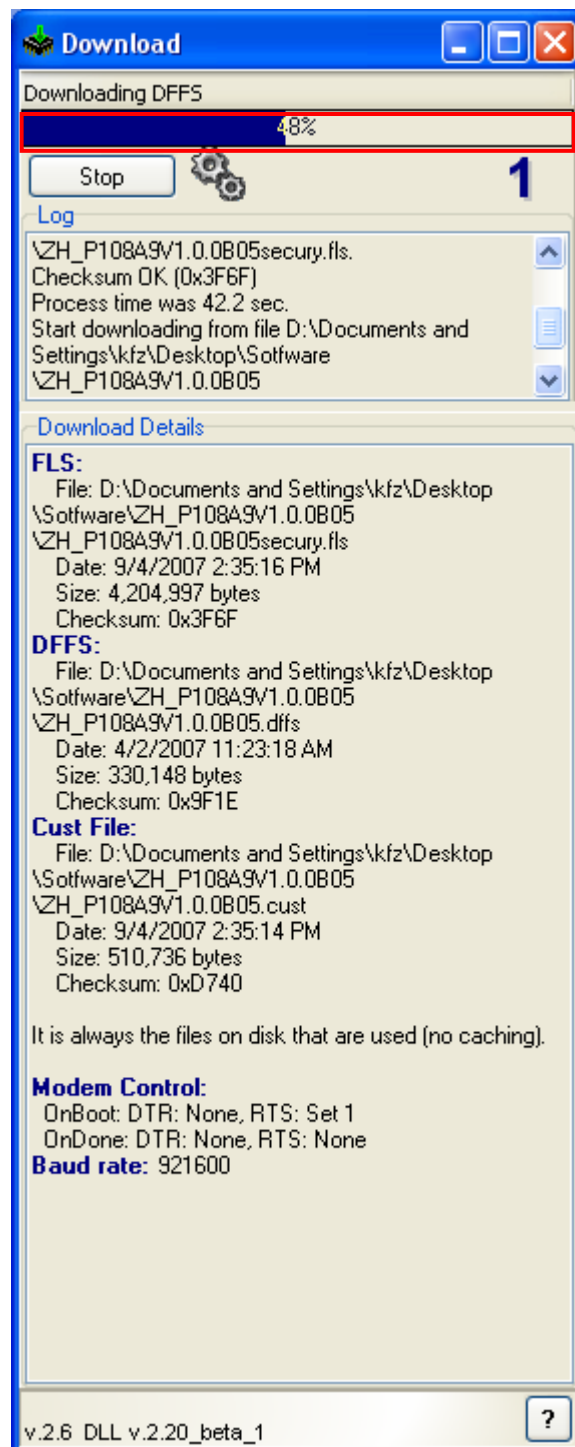


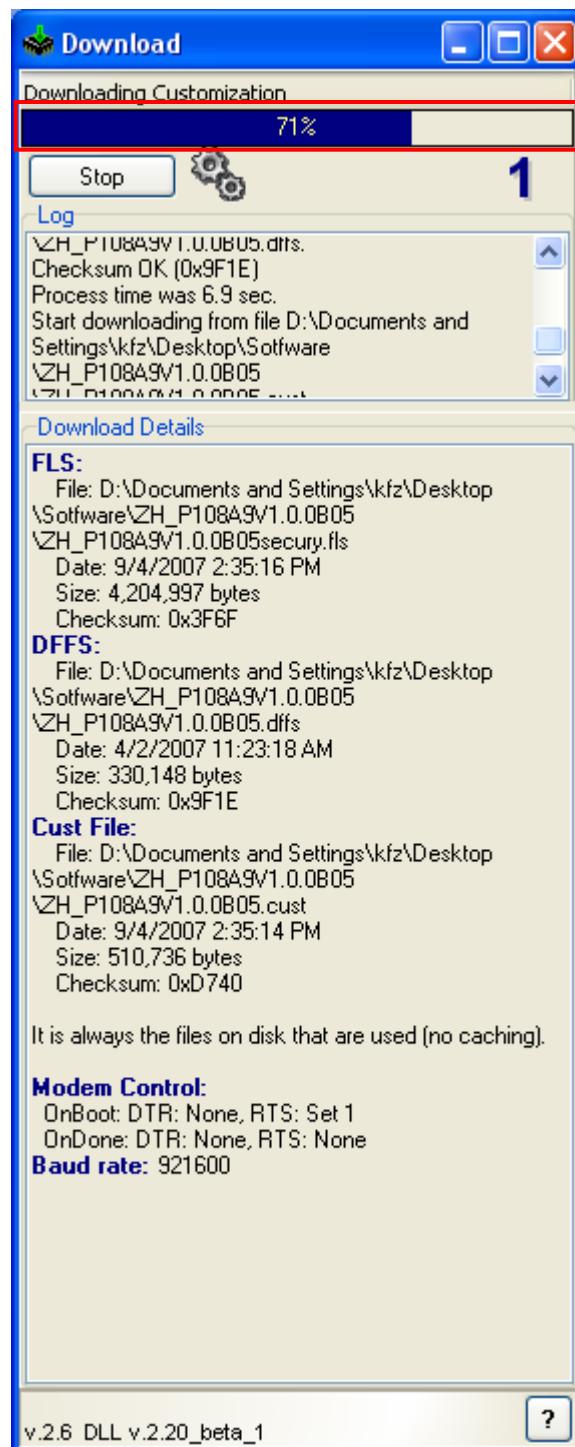
- ◆ Connect the mobile phone and switch it on.

Note: the mobile phone should download files with its battery installed. Click **Start** button and then connect the phone.

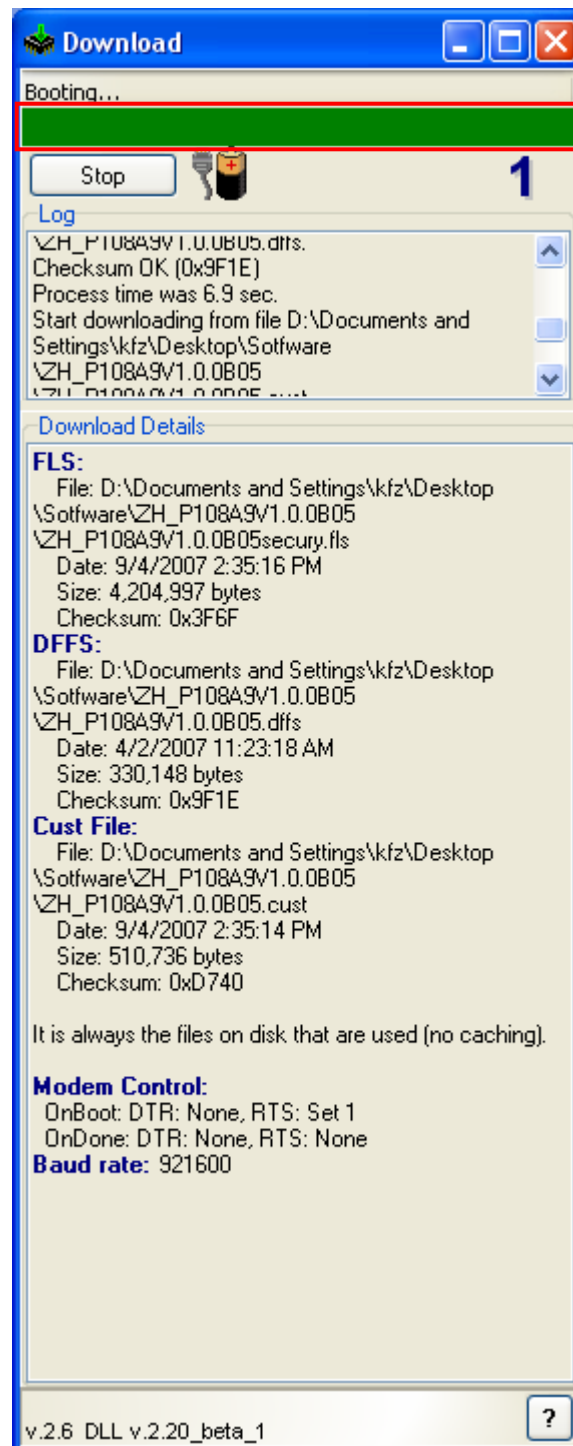


- ◆ The mobile phone is downloading files, and the interfaces are as shown below.



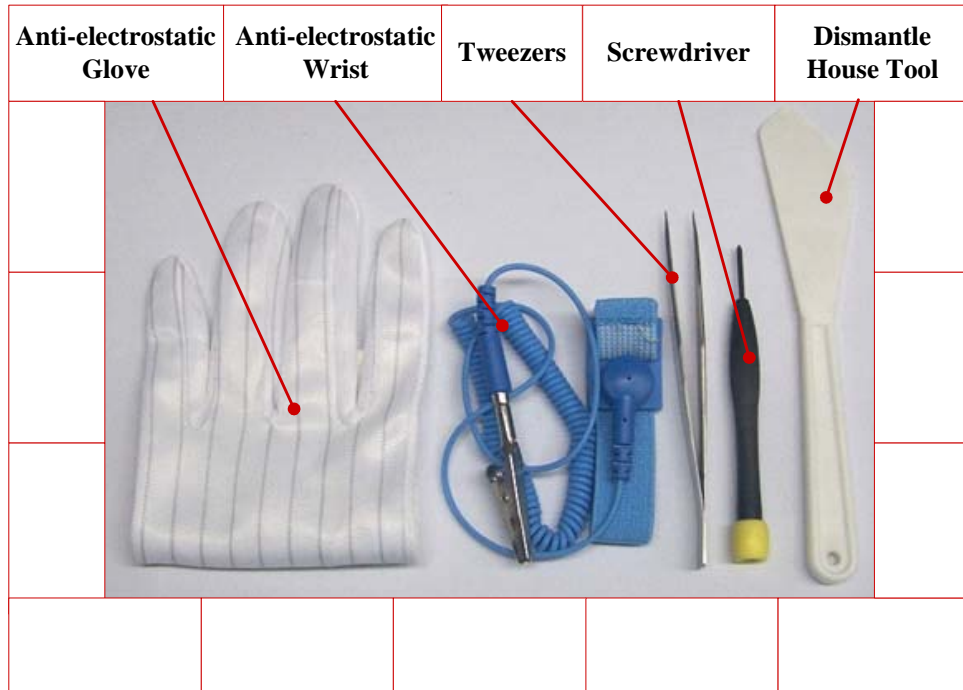


- ◆ The download is finished, and the interface is as shown below:

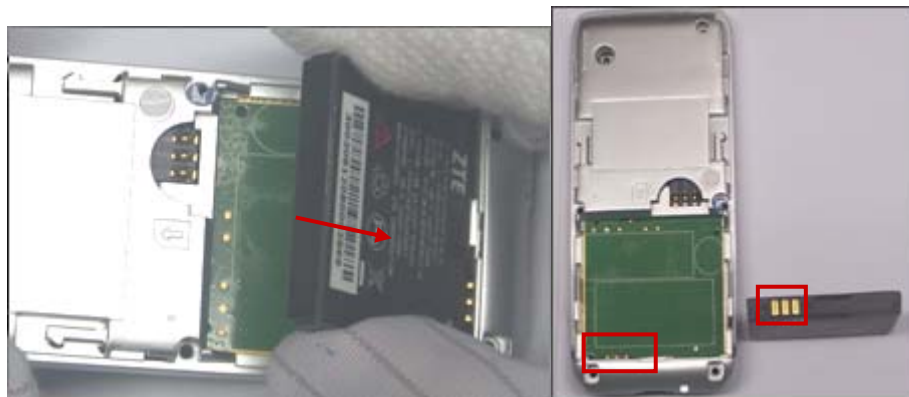


2.3 Disassembling Flow

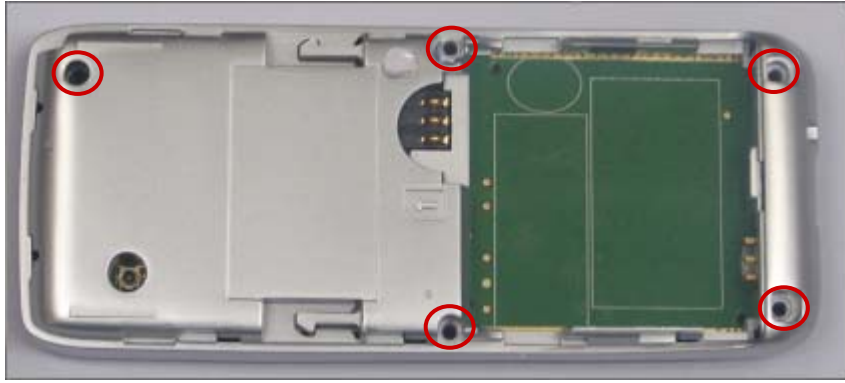
- Tools Used to Disassemble



- Take out the battery carefully. Pay attention to the touch point and the touch plate, as shown below:



- Notes: Positions of five screws are as shown below:



- Disassemble the front and back shells using the disassemble toll, paying attention to the card holder position, as shown below:





- Notes: The disassembled front and back shells are as shown below:
- Note: Pay attention to the installation positions of the MIC and receiver. MIC should contact well with its contact, as shown below.

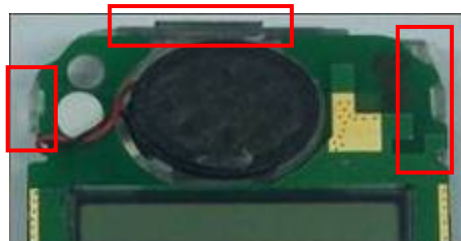


MIC



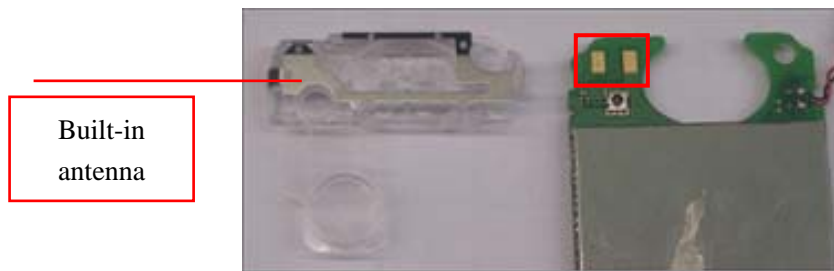
Receiver

- Pay attention to the position of the card holder position when the built-in antenna is disassembled, as shown below:



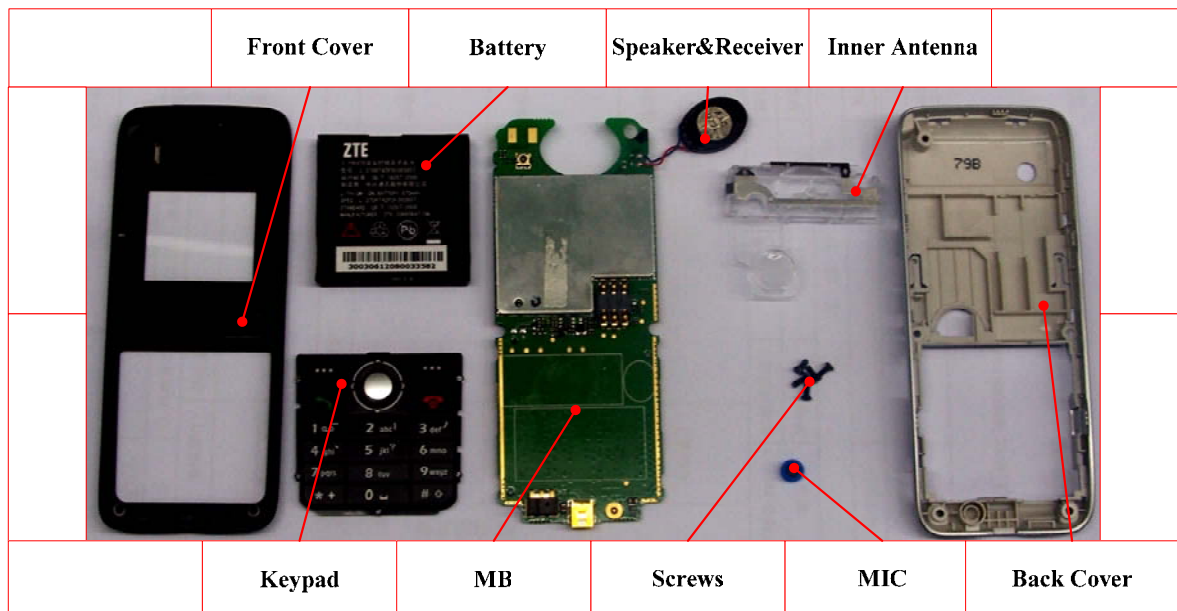
- Position of the built-in antenna touch plate and touch point.

Notes: the antenna touch plate and touch point should connect well when the built-in antenna is installed.



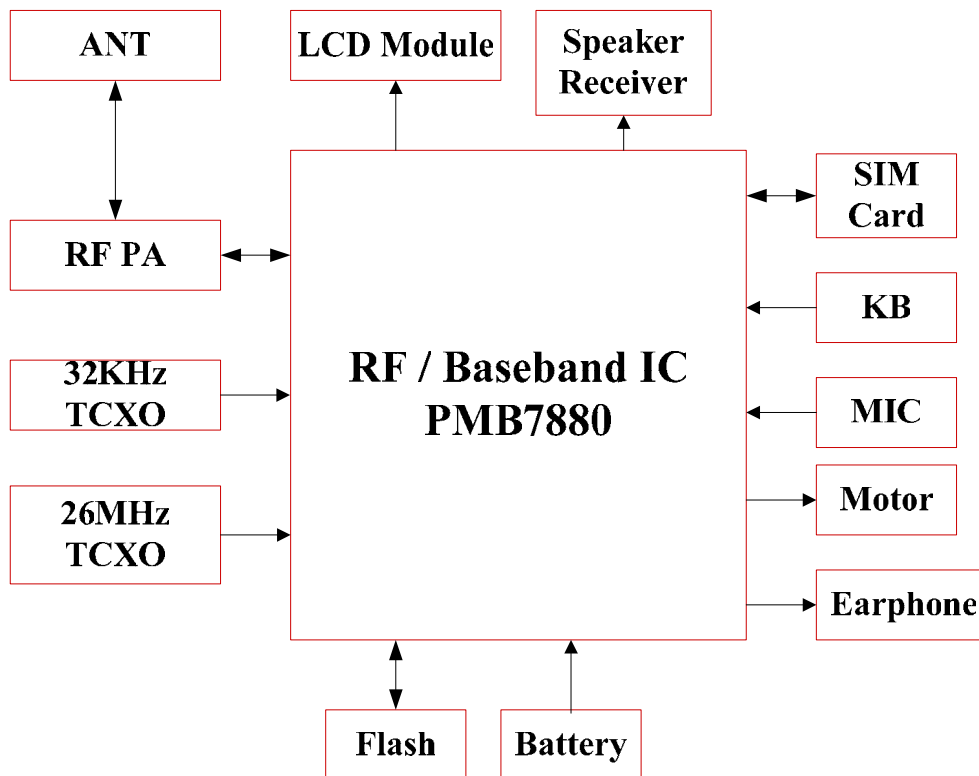
2.4 Components

The mobile phone includes the components as shown below:

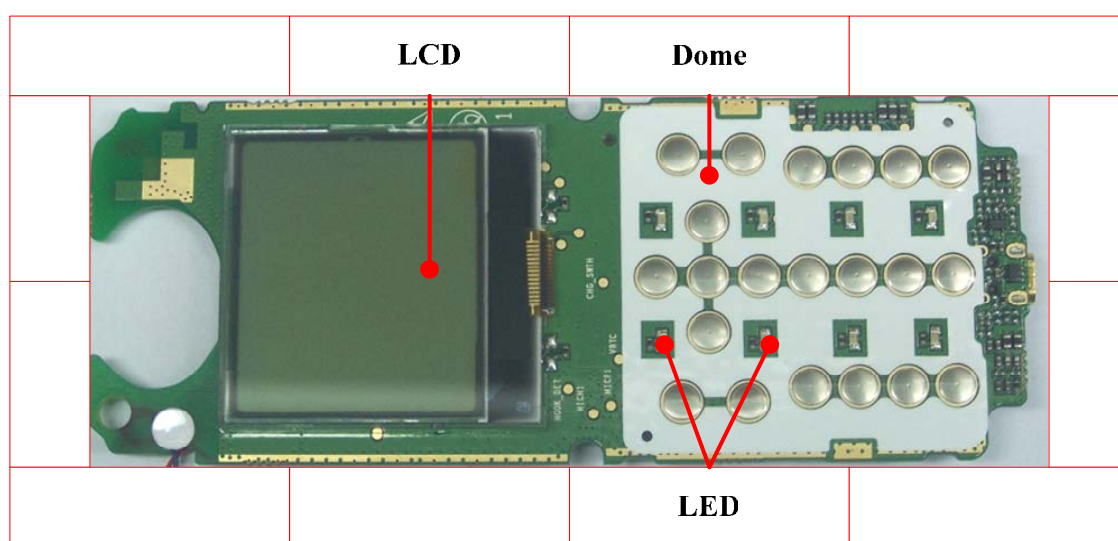


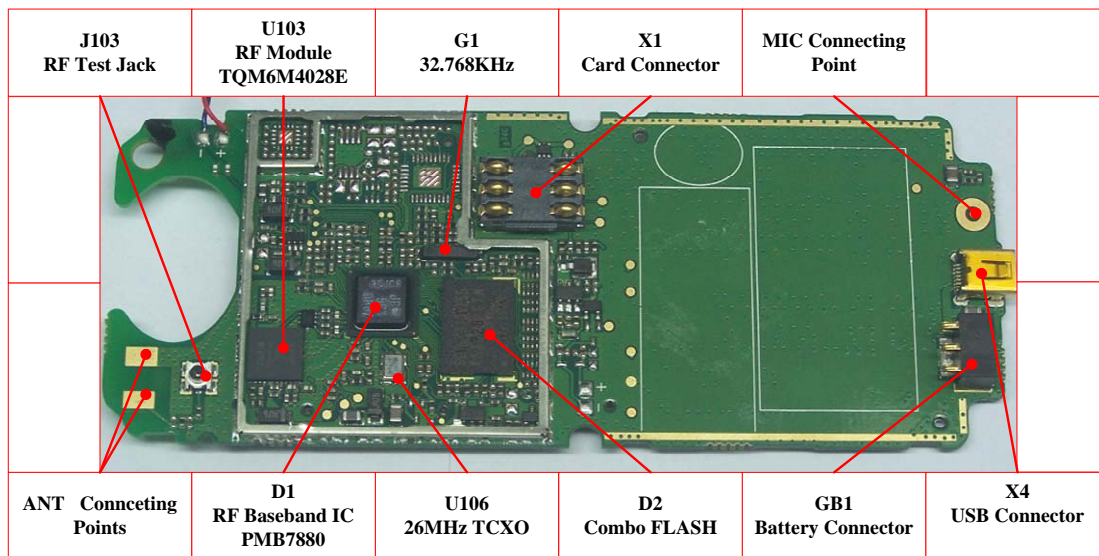
2.5 Block Diagram for Principle

The principle of the mobile phone is as shown in the block diagram below:



2.6 Hardware Material Object Picture





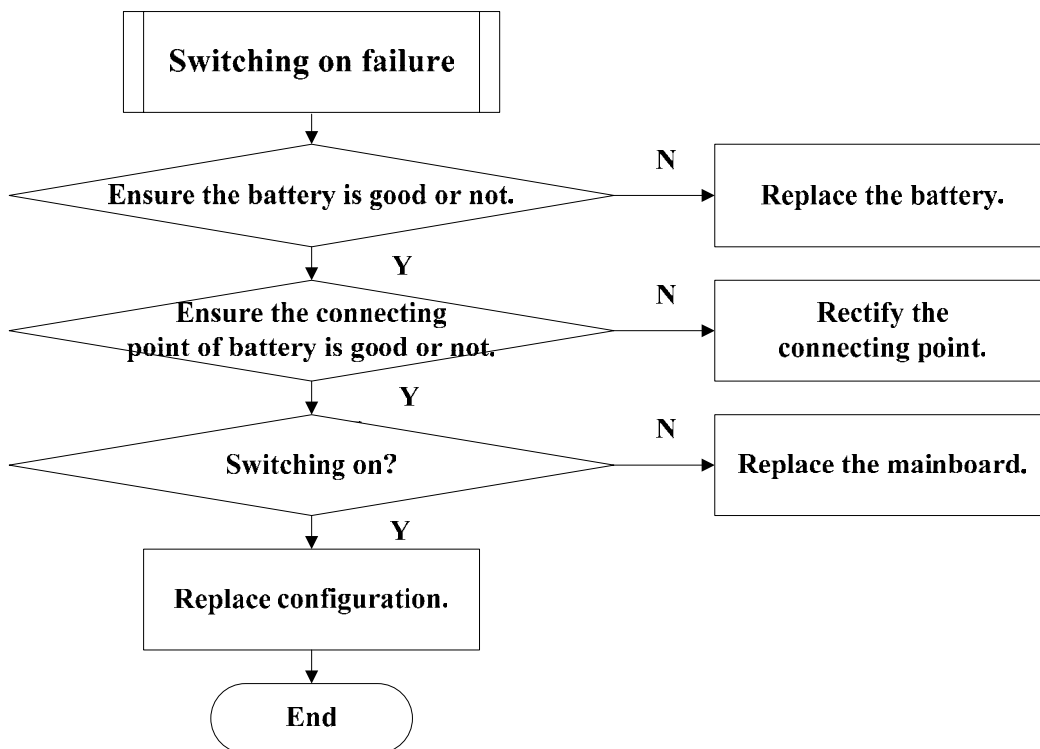
MB Bottom Distributing

3. Flow Chart of Familiar Troubleshooting (Level 1)

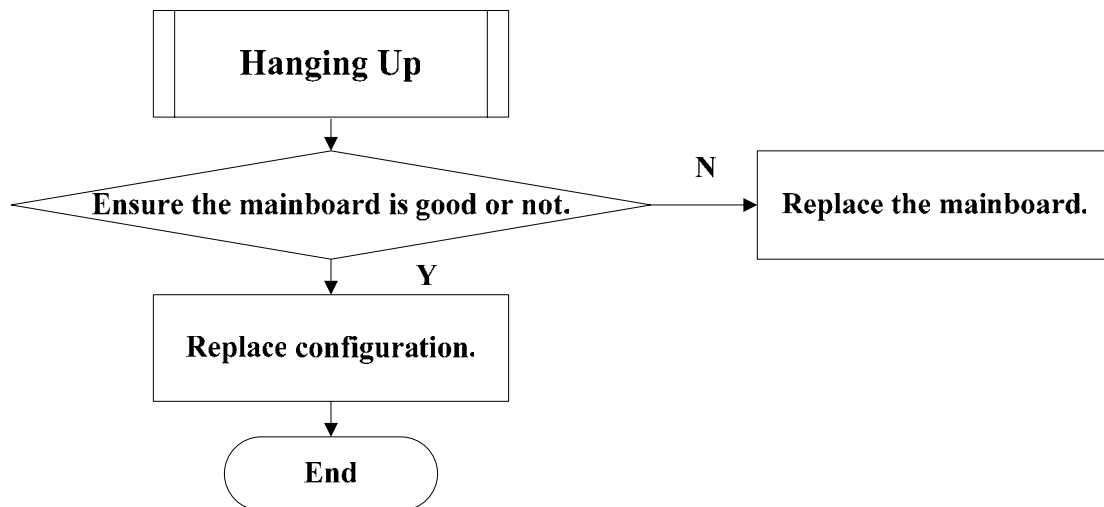
3.1 Components Failure

Please replace the faulty components referring to the disassembling steps.

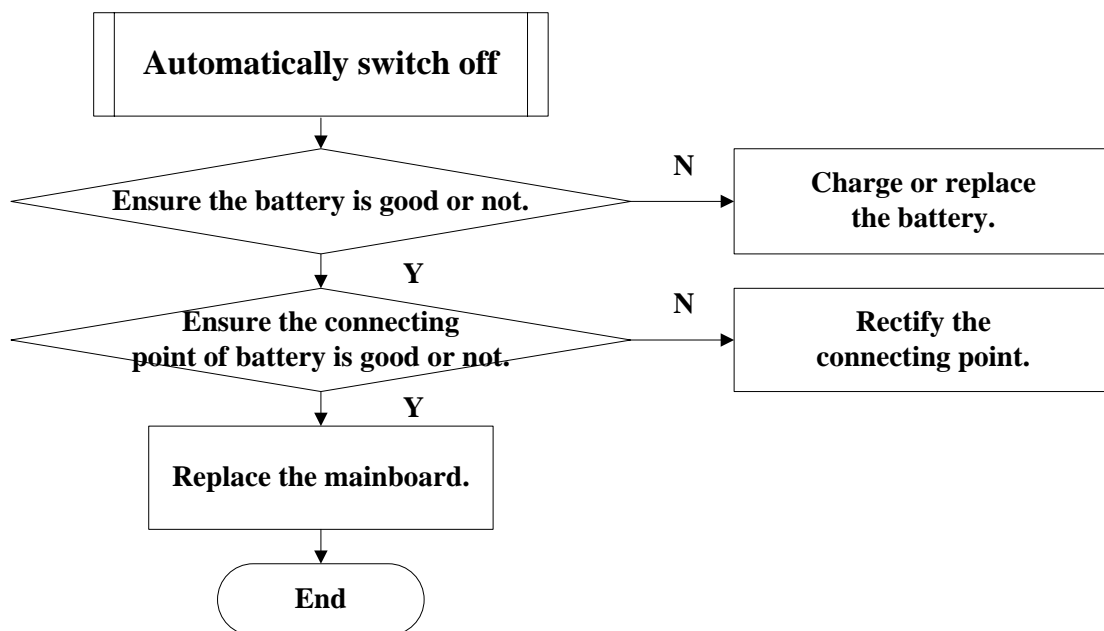
3.2 Switching On Failure



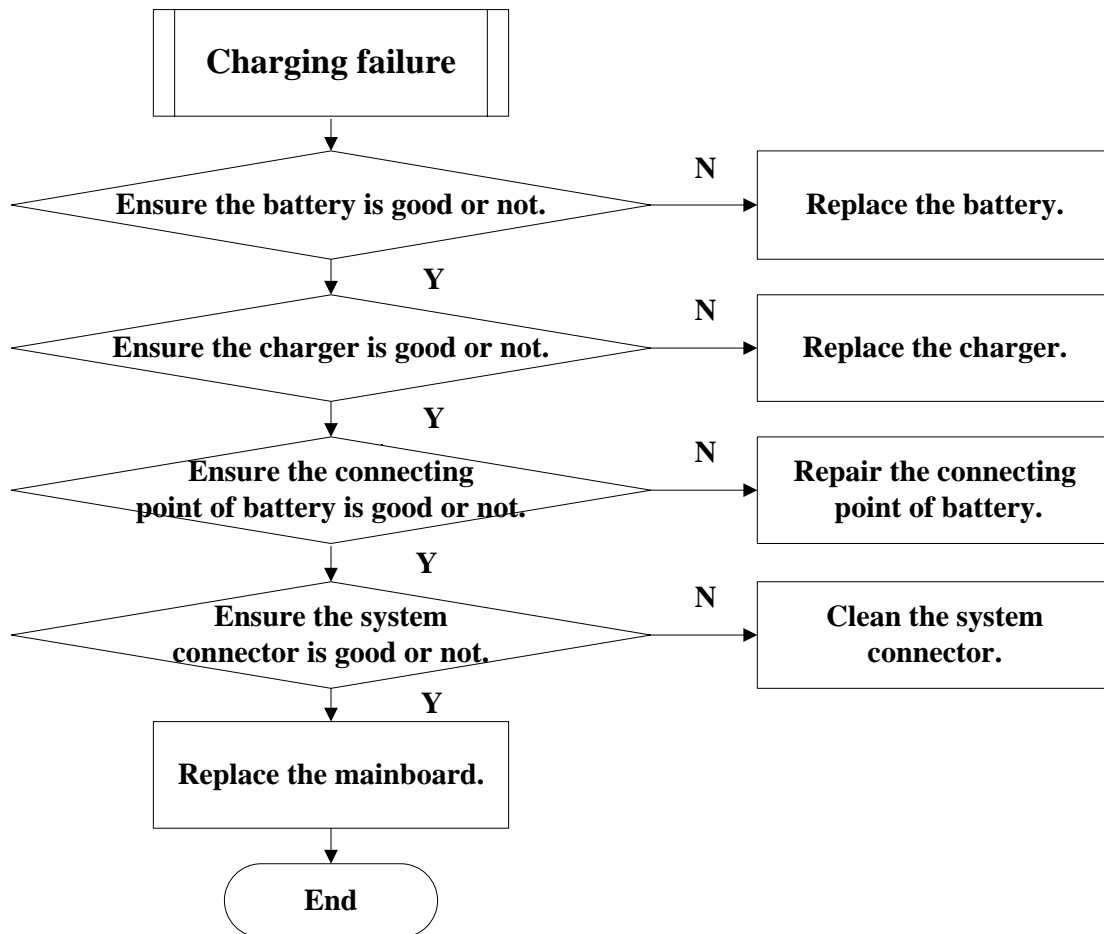
3.3 Hanging



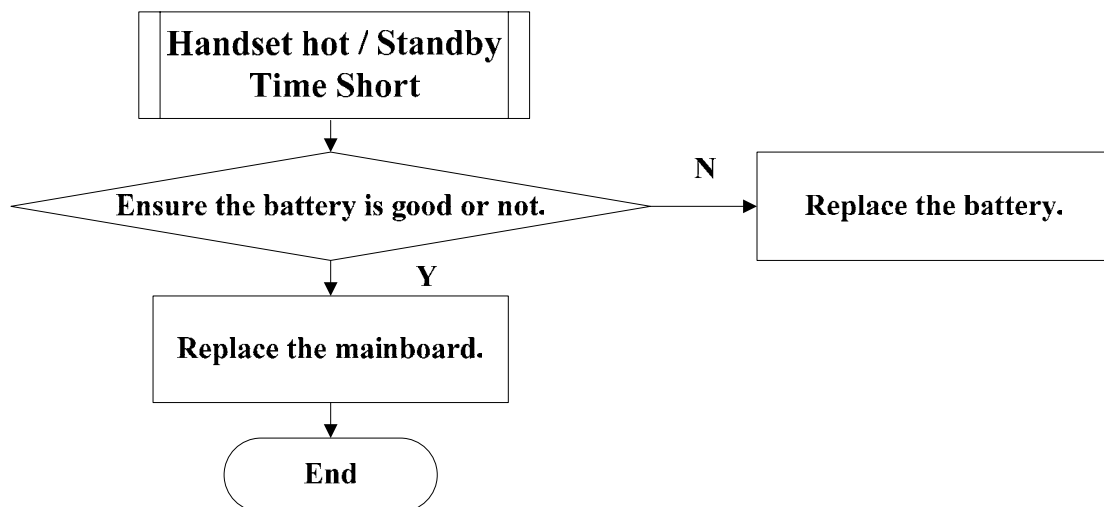
3.4 Automatically Switch Off



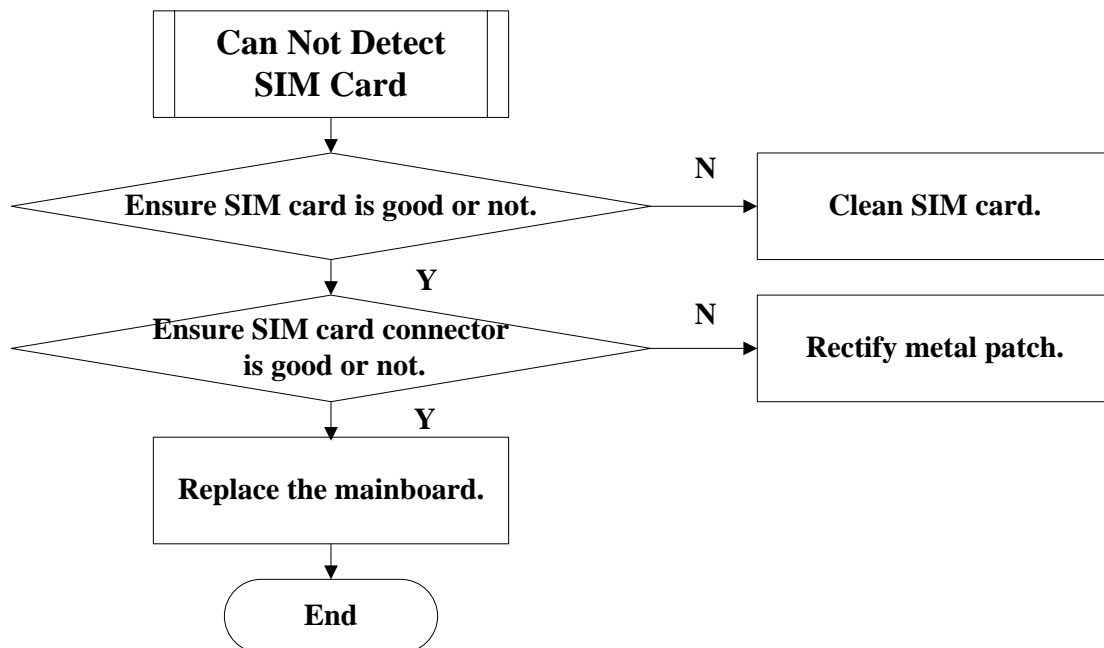
3.5 Charging Failure



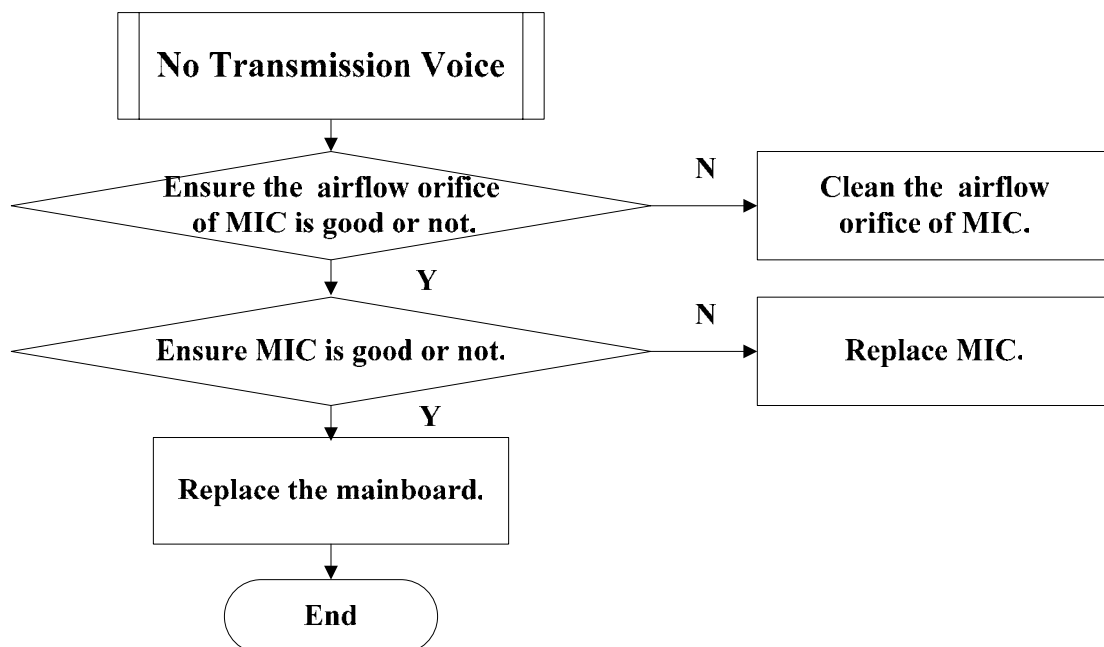
3.6 Handset Hot



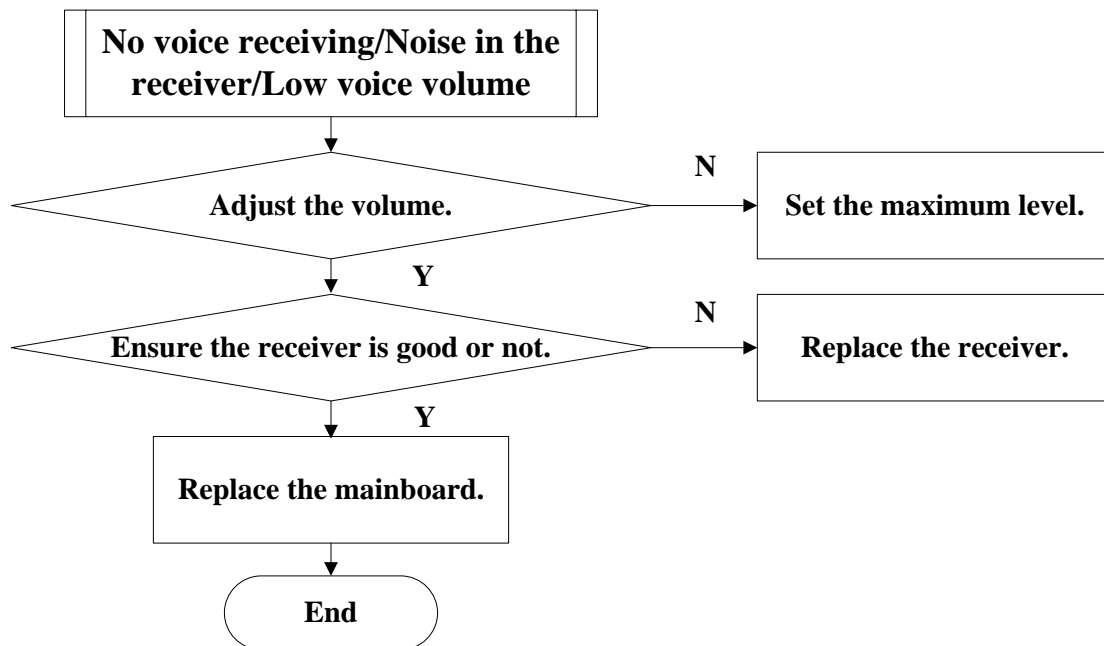
3.7 SIM Card Failure



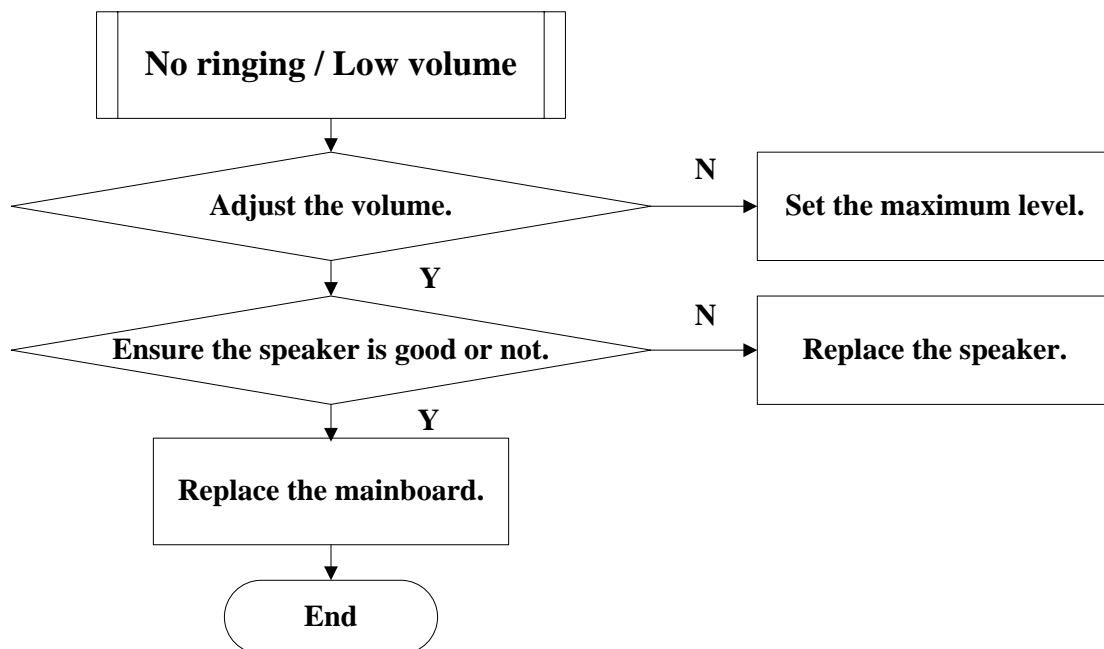
3.8 No Transmission Voice



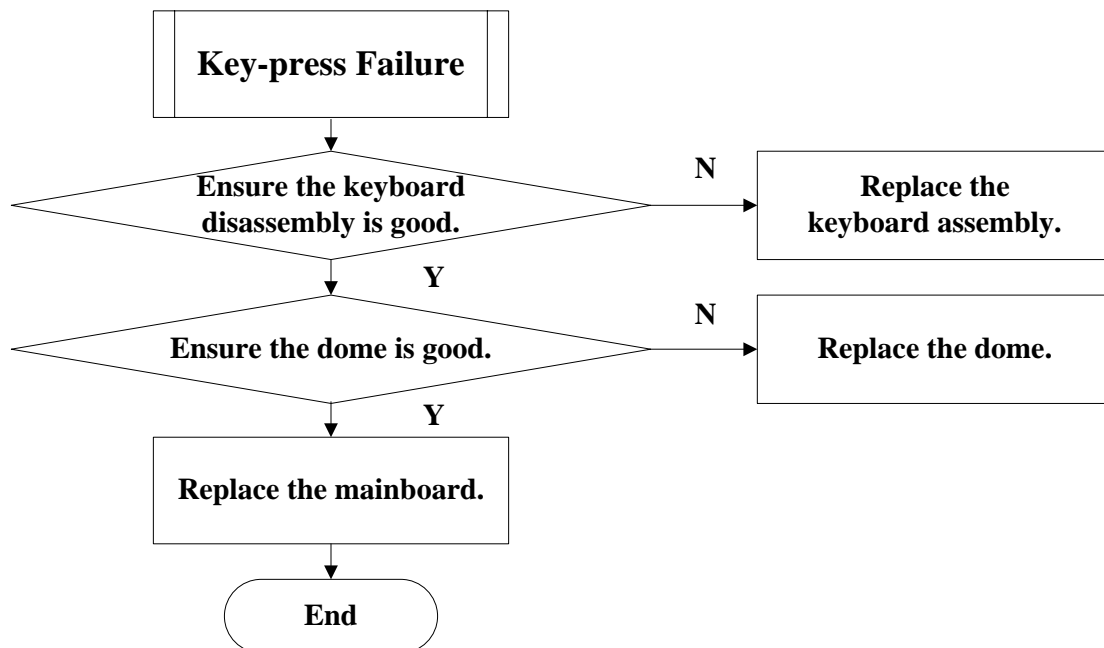
3.9 No voice receiving/Noise in the receiver/Low voice volume



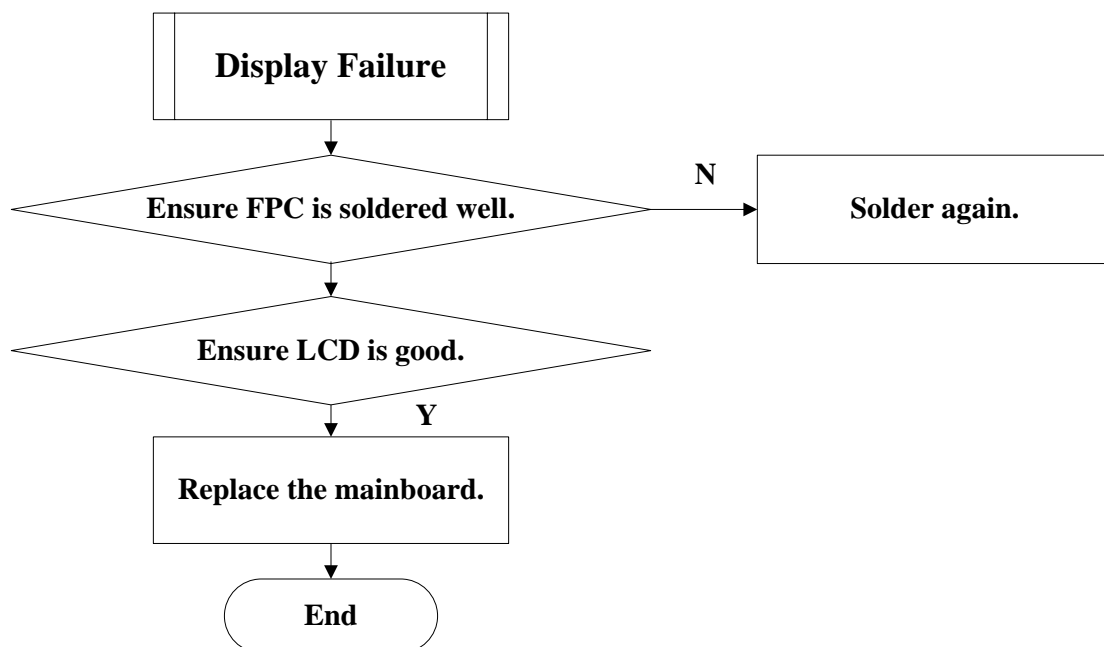
3.10 No ringing or low volume



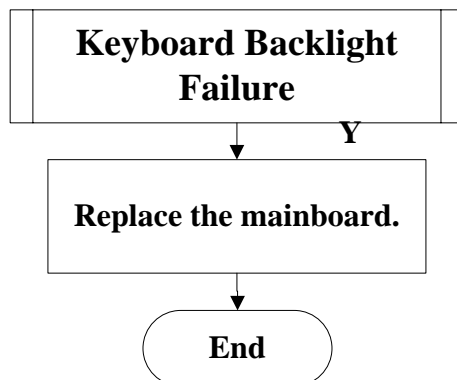
3.11 Key-press Failure



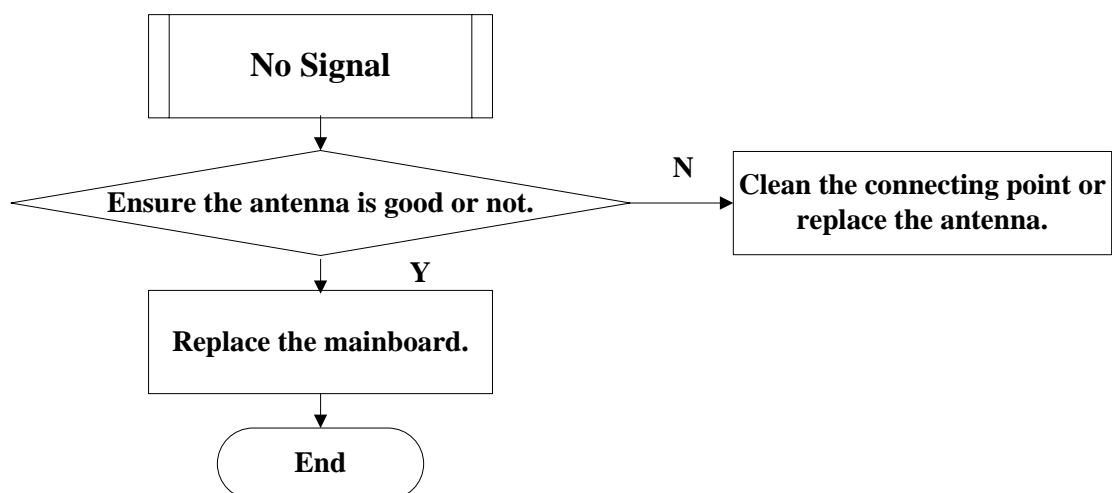
3.12 Display Failure



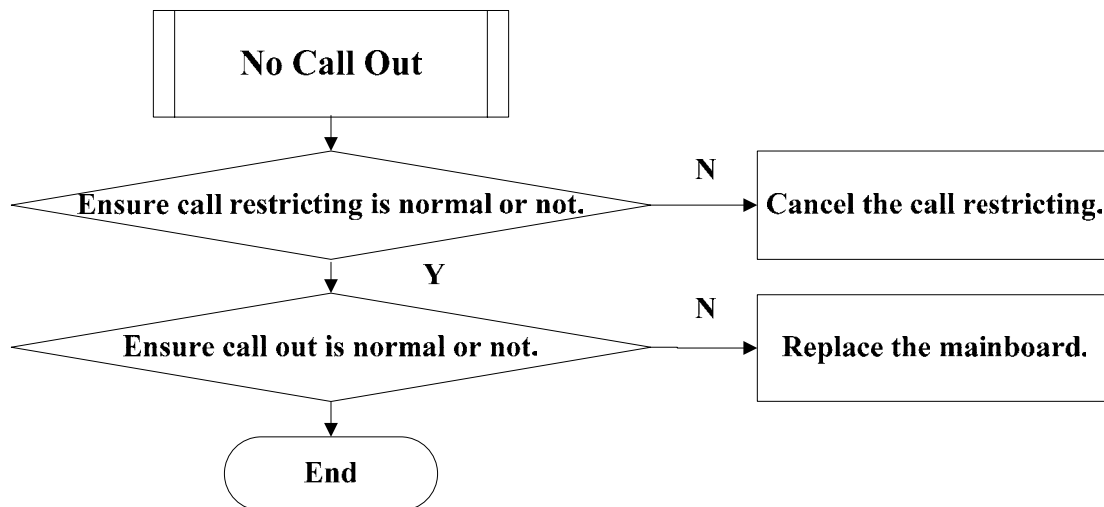
3.13 Key Backlight Failure



3.14 No Signal



3.15 No Call Out



4. Parts List

A135 GSM Dual Frequency Digital Mobile Phone After-sales Parts Lists		
No.	P/N	Part Name
1	126709150001	P108A9 Main Board Components
2	055401002199	P108A1 Front Shell Components
3	055401002200	P108A1 Back Shell Components
4	050603100107	P108A1 Antenna Components
5	035030100172	P108A1 LCD module
6	035040300038	MIC
7	035040100040	SPEAKER/receiver

Note: This is the main parts list. If you need a detail one, please apply it from local after-sales service manager.