

T11_Maintenance Instruction

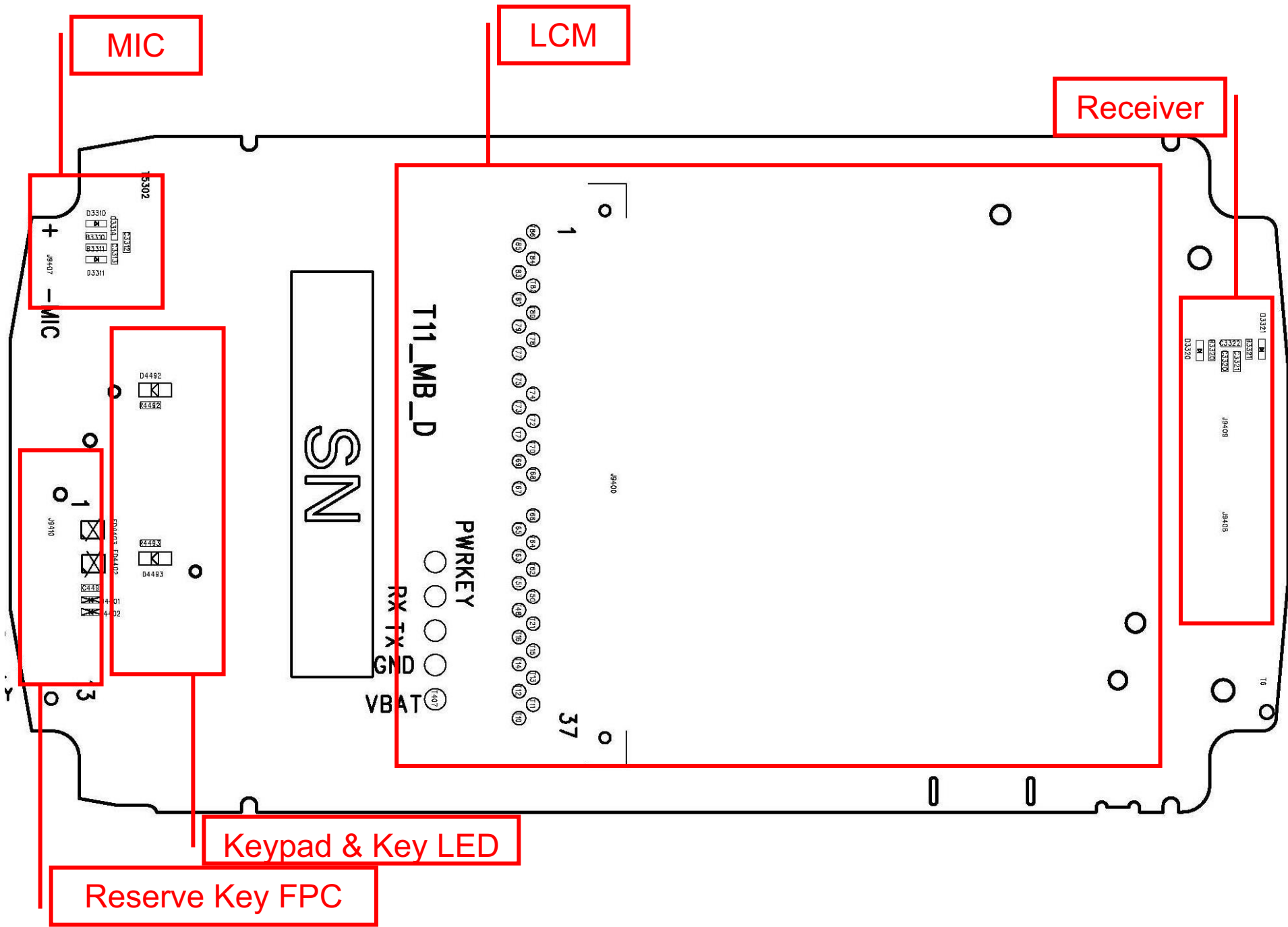
Prepared by : Jeffery Huang

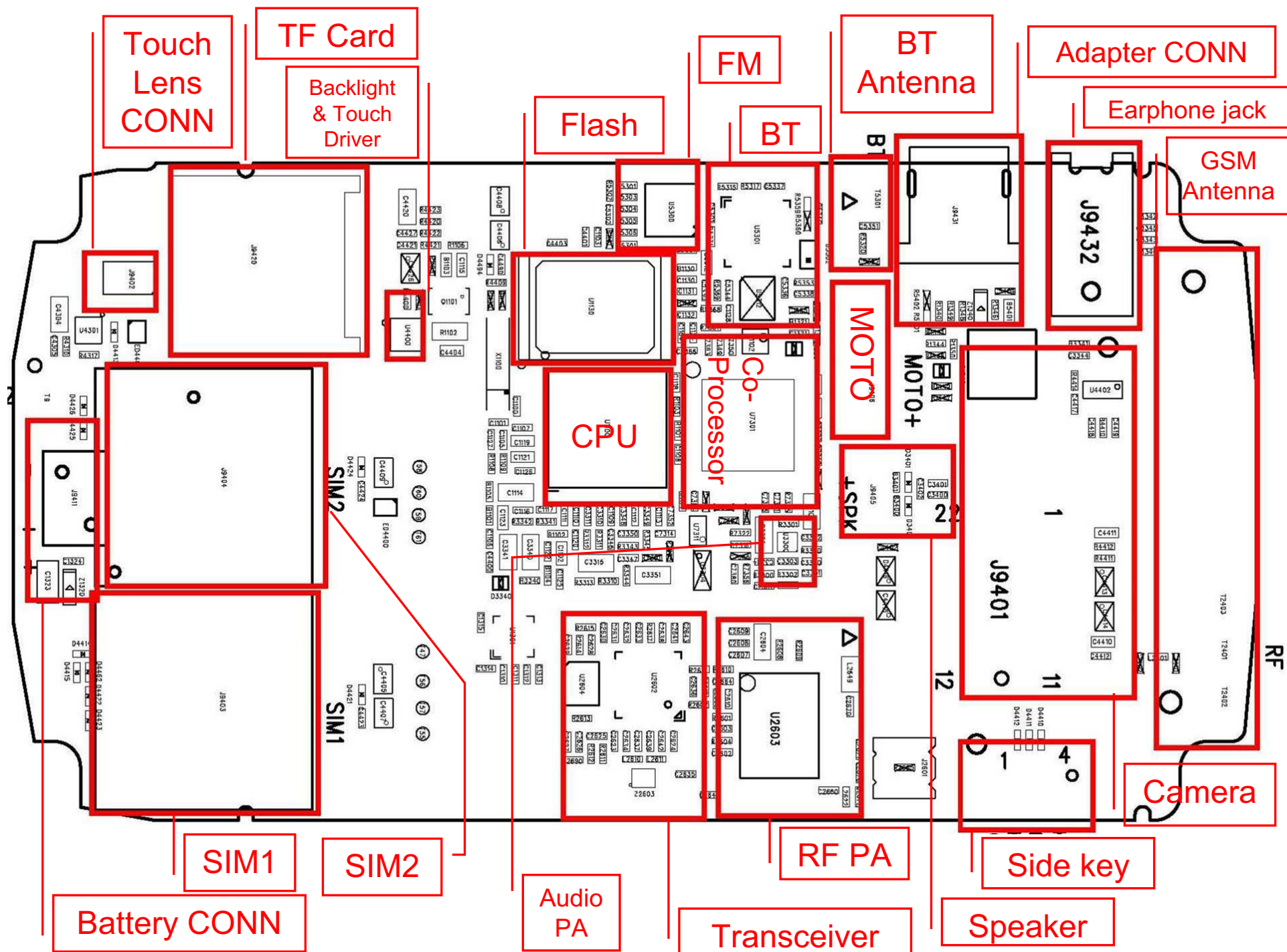
Approved by:

Date: 2010-5-31

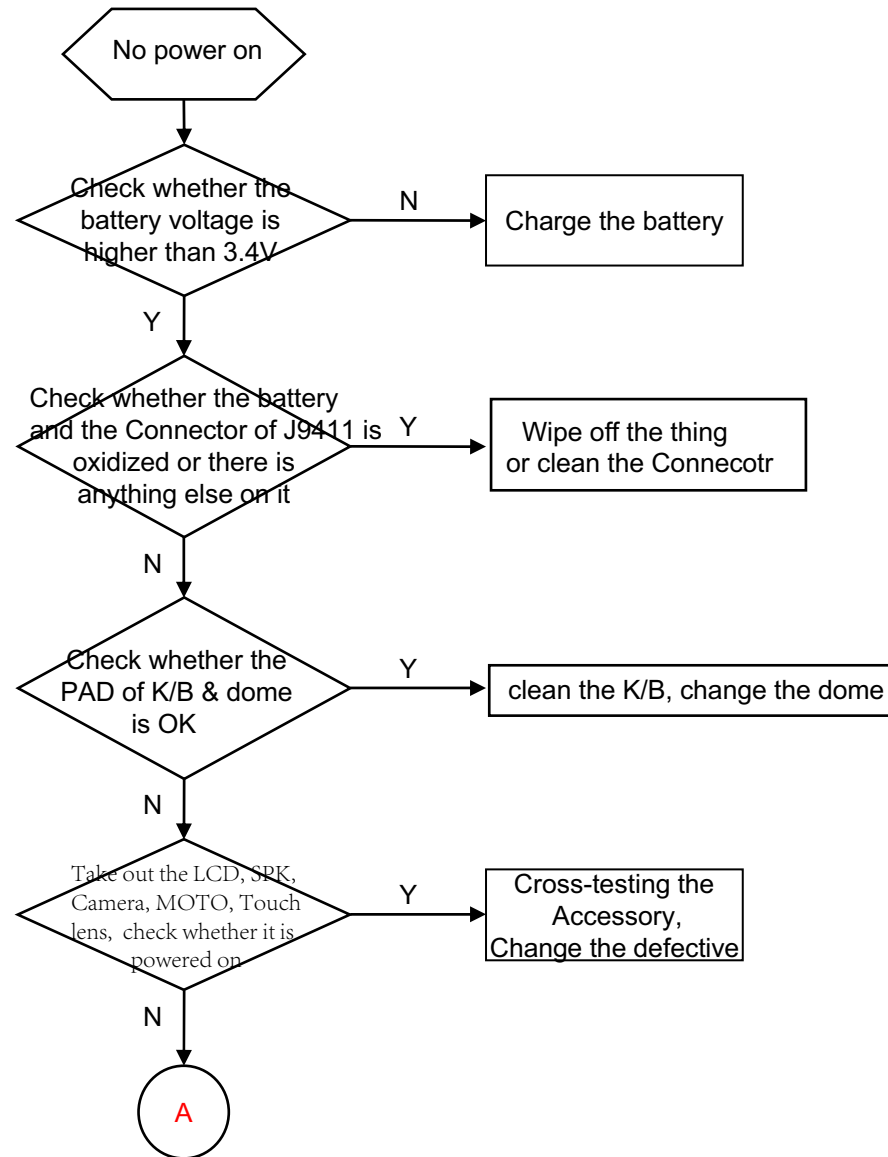
TABLE OF CONTENTS

- ❑ No power on
- ❑ Shut off automatically
- ❑ Dead halt
- ❑ No charge
- ❑ Quantity of electricity faulty detection
- ❑ No display
- ❑ LED NG (on the LCD)
- ❑ LED NG (on the keyboard)
- ❑ Key NG
- ❑ No ring
- ❑ No receiving voice
- ❑ No sending voice or the voice is small
- ❑ No vibration
- ❑ SIM Card inefficacy
- ❑ Camera inefficacy
- ❑ Bluetooth inefficacy
- ❑ TF card inefficacy
- ❑ Earphone inefficacy
- ❑ FM inefficacy
- ❑ Touch NG





➤ No power on



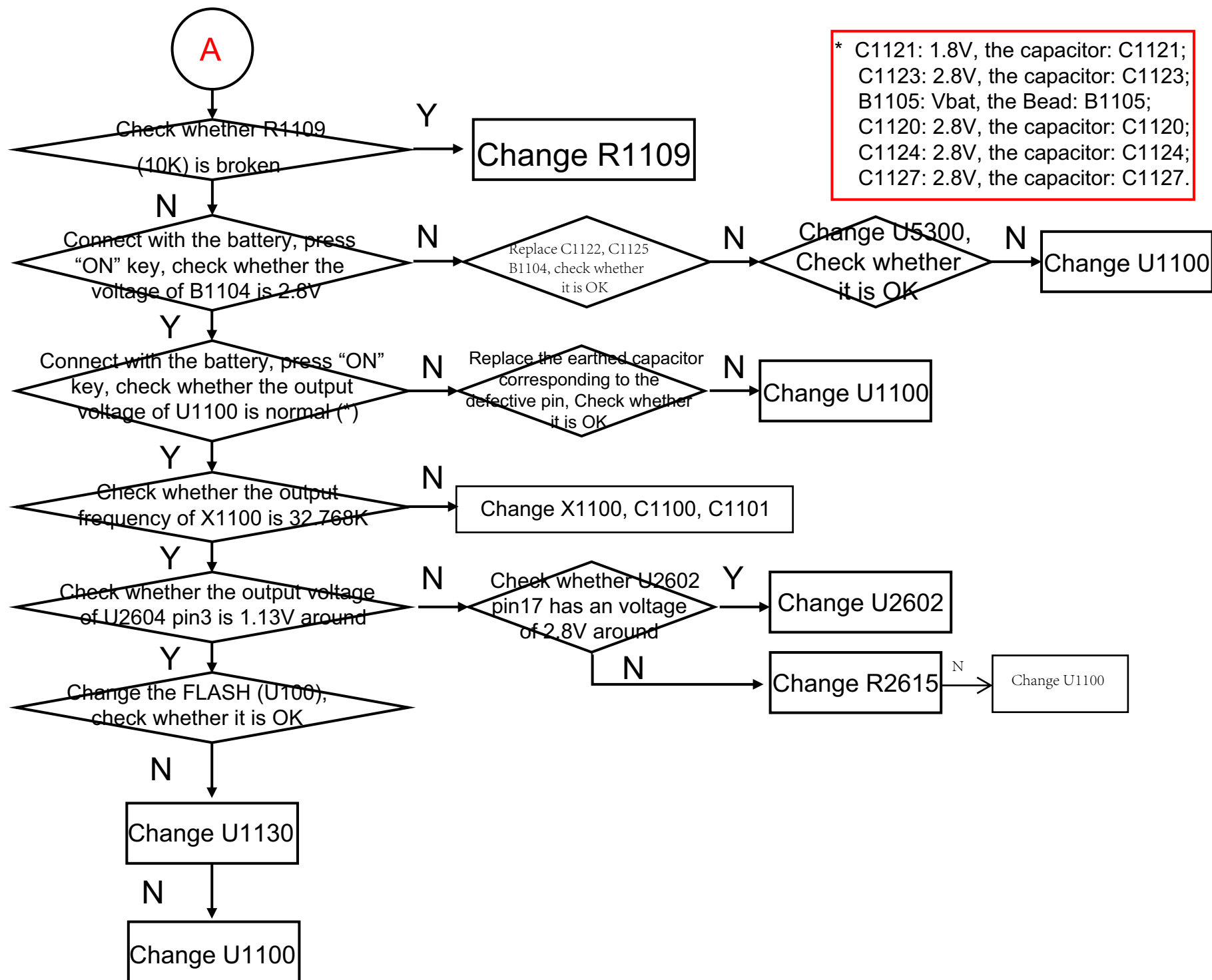


Fig 1

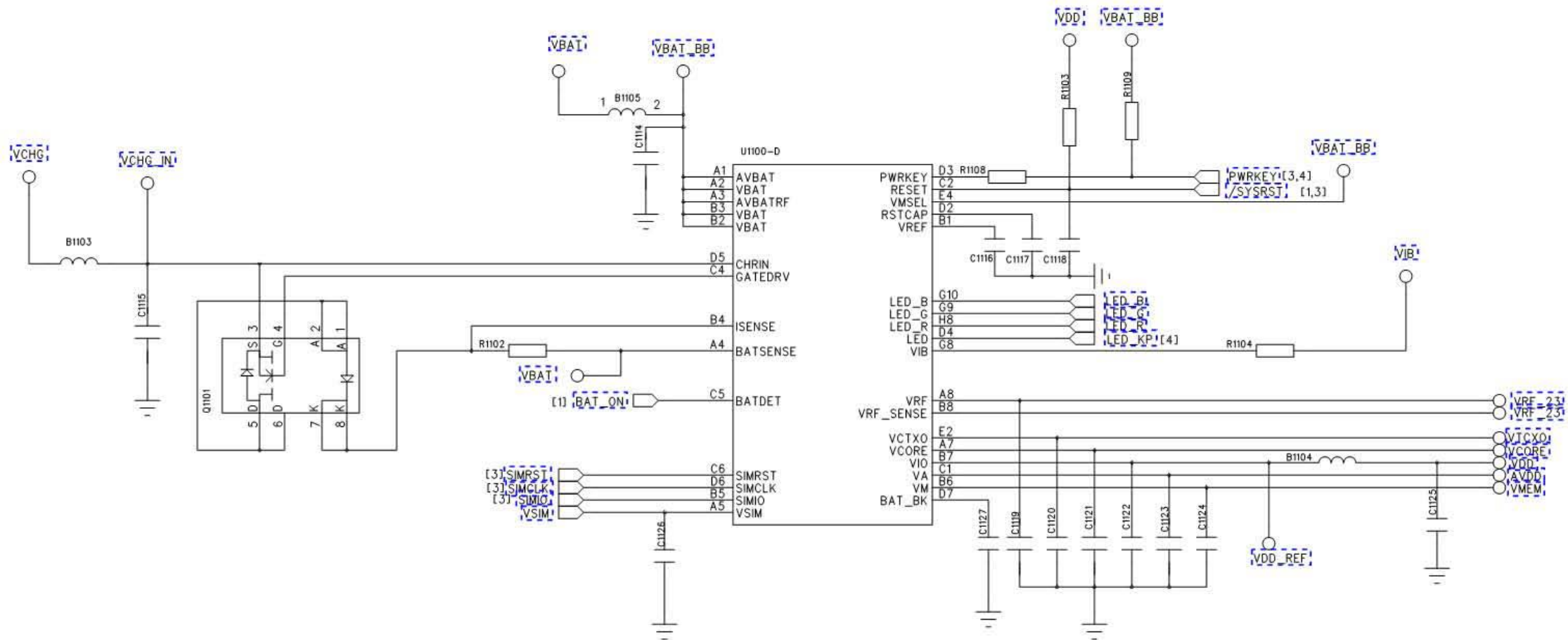
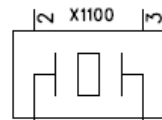


Fig 2

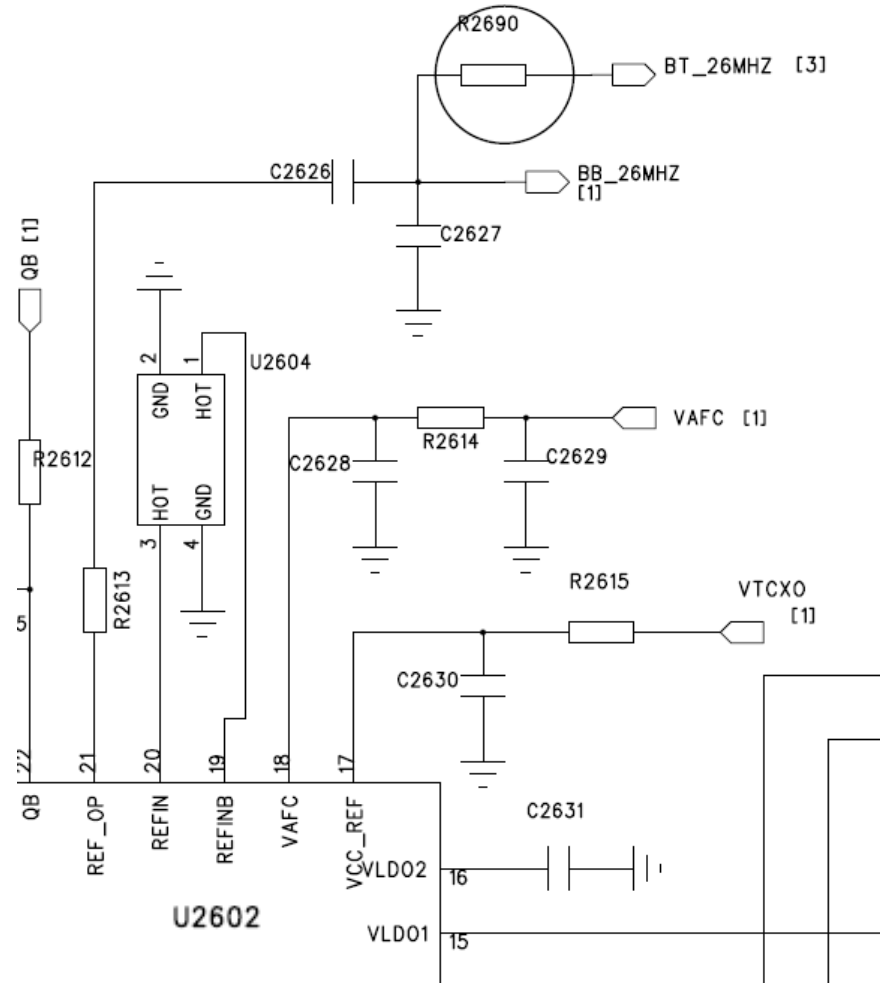
need 50V



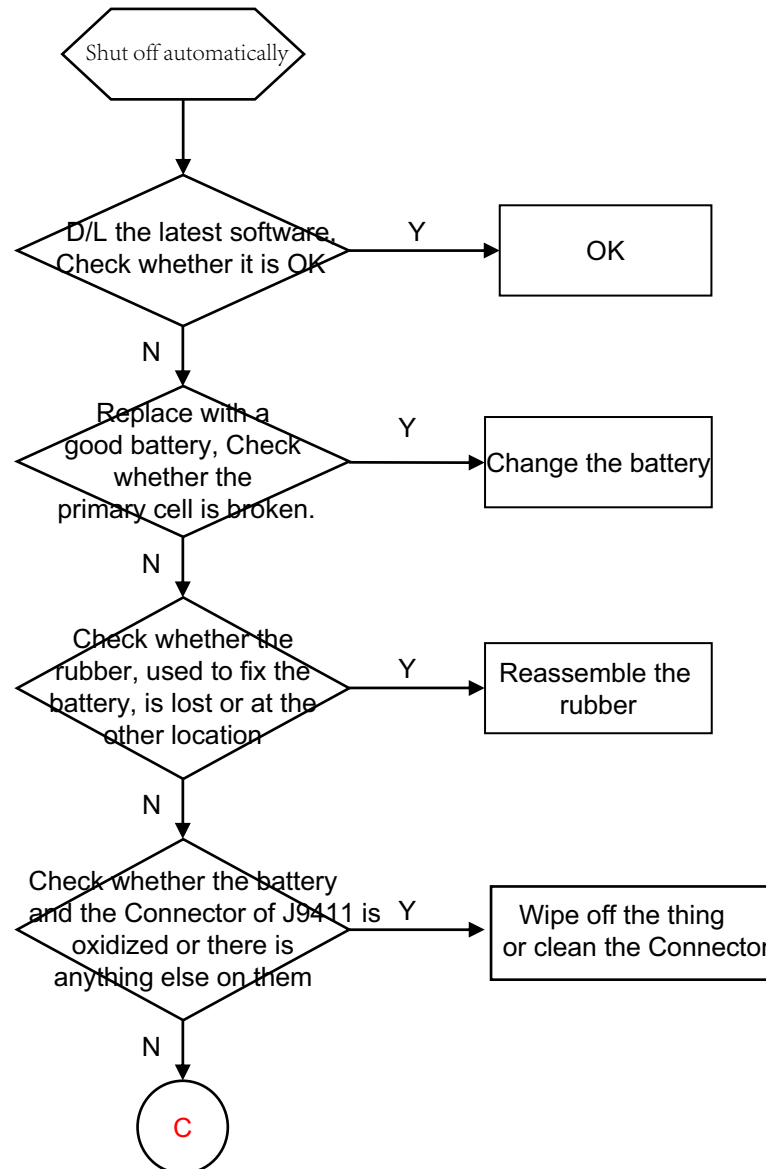
need 50V



SYSCLOCK
/SYSRST



➤ Shut off automatically



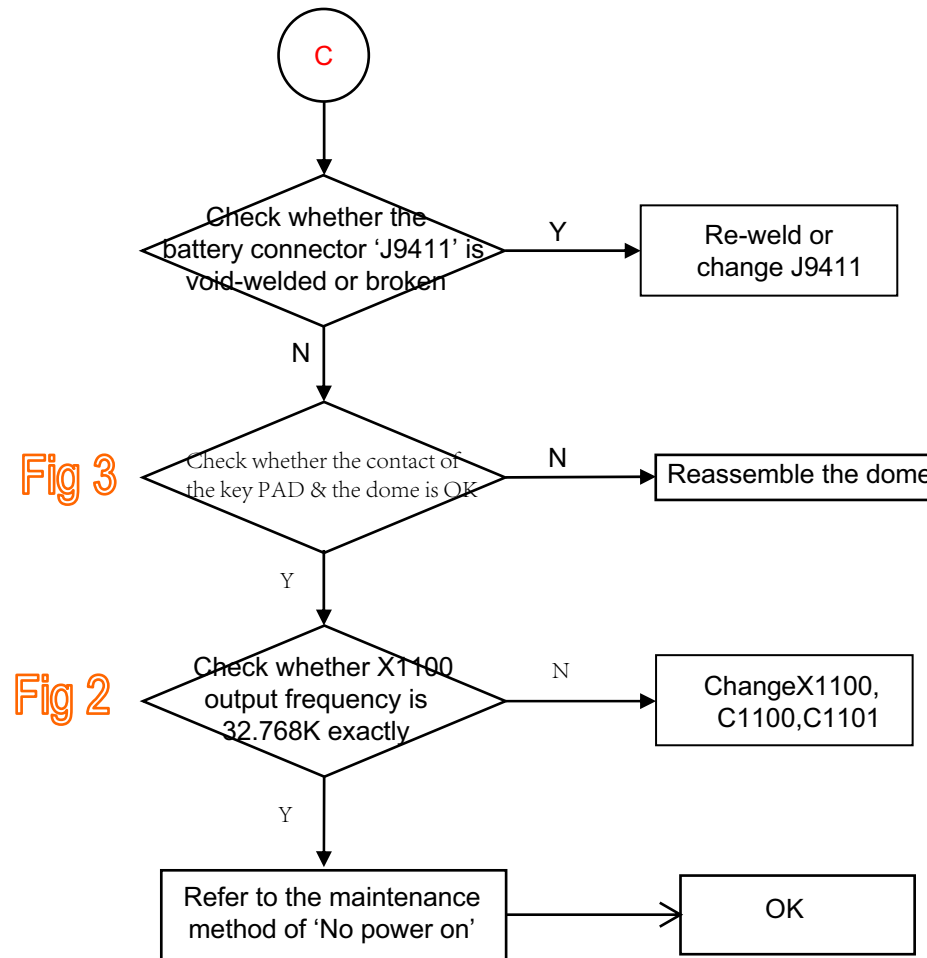
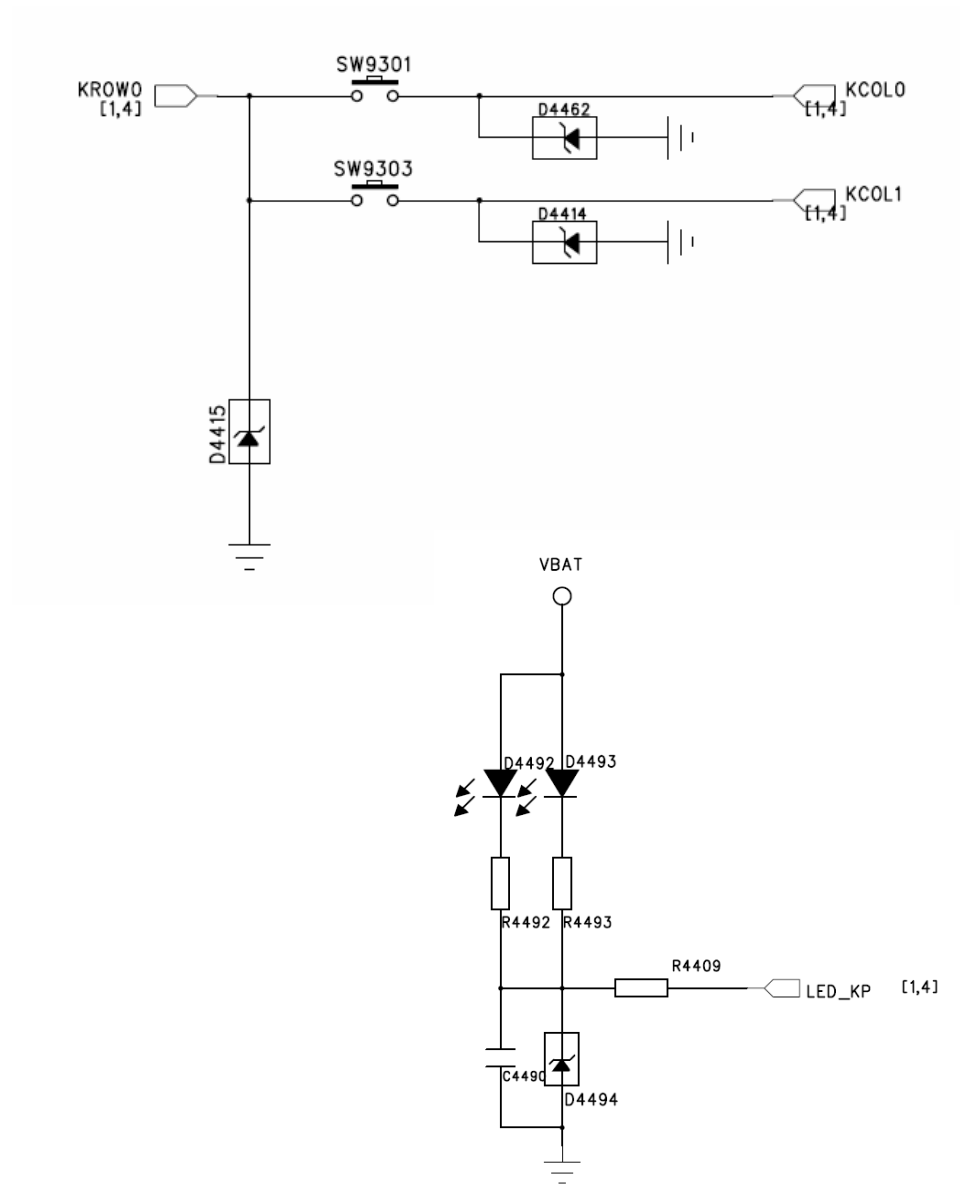
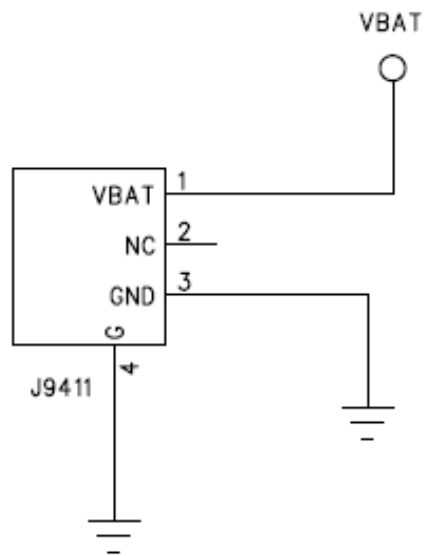


Fig 3



➤ Dead halt

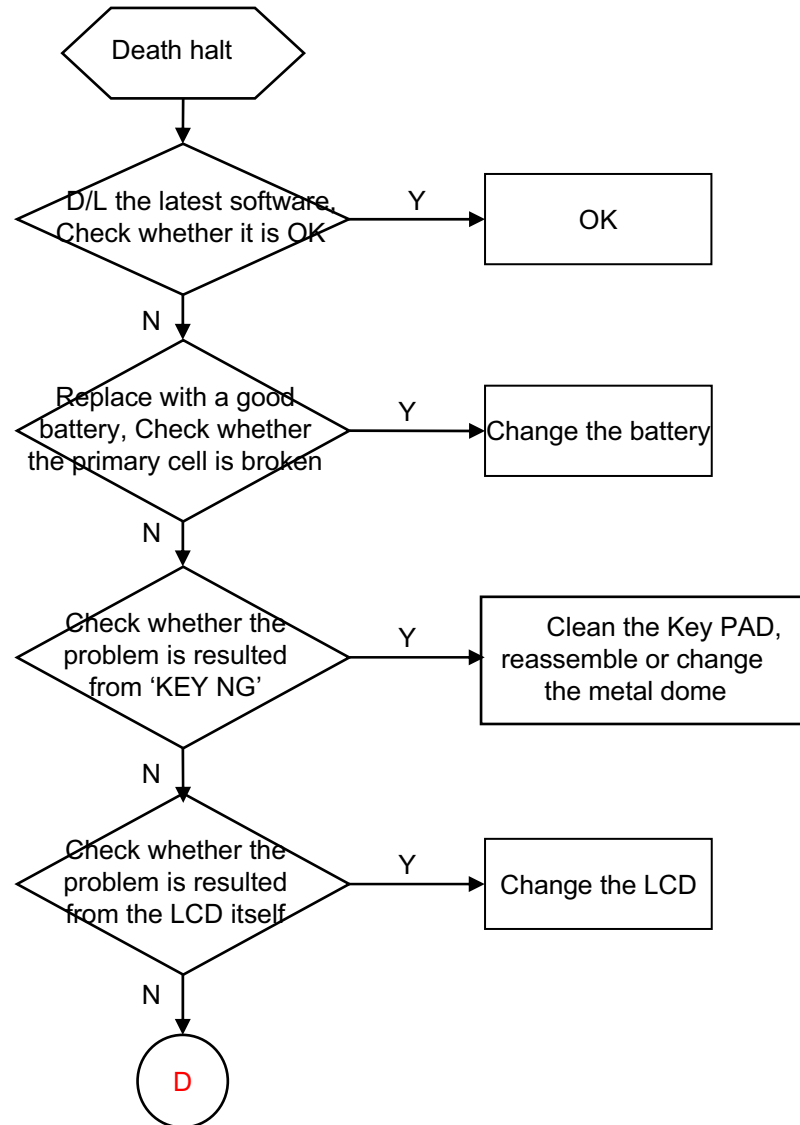
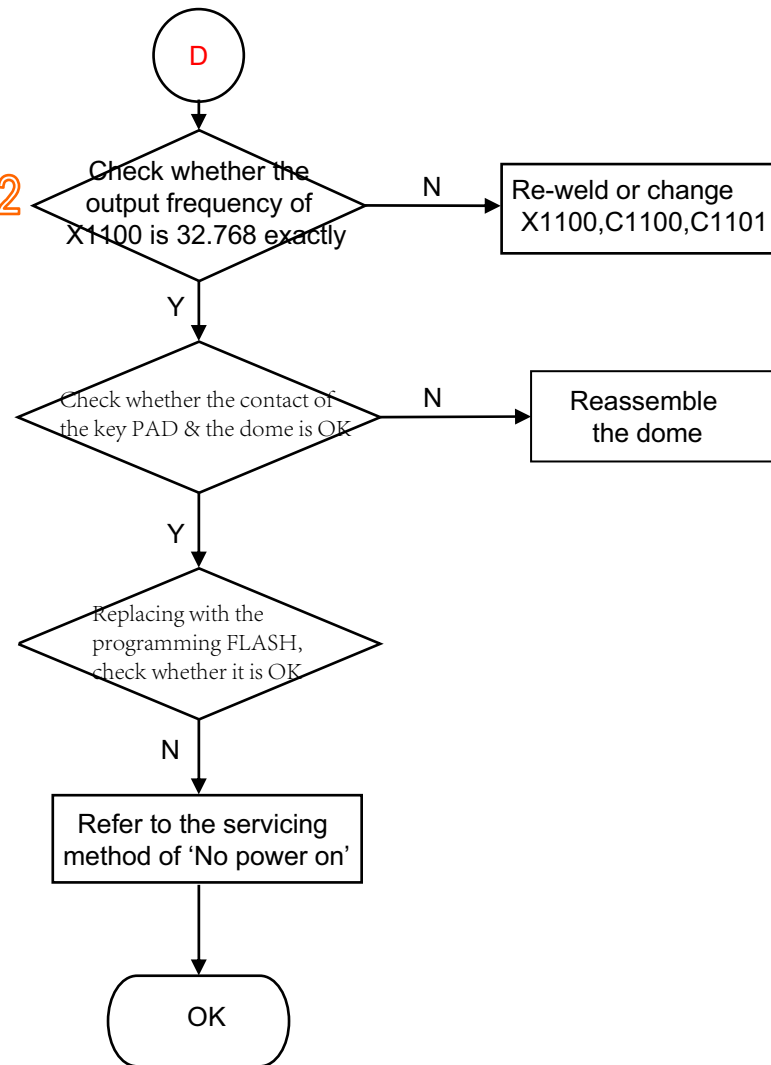


Fig 2



➤ No charge

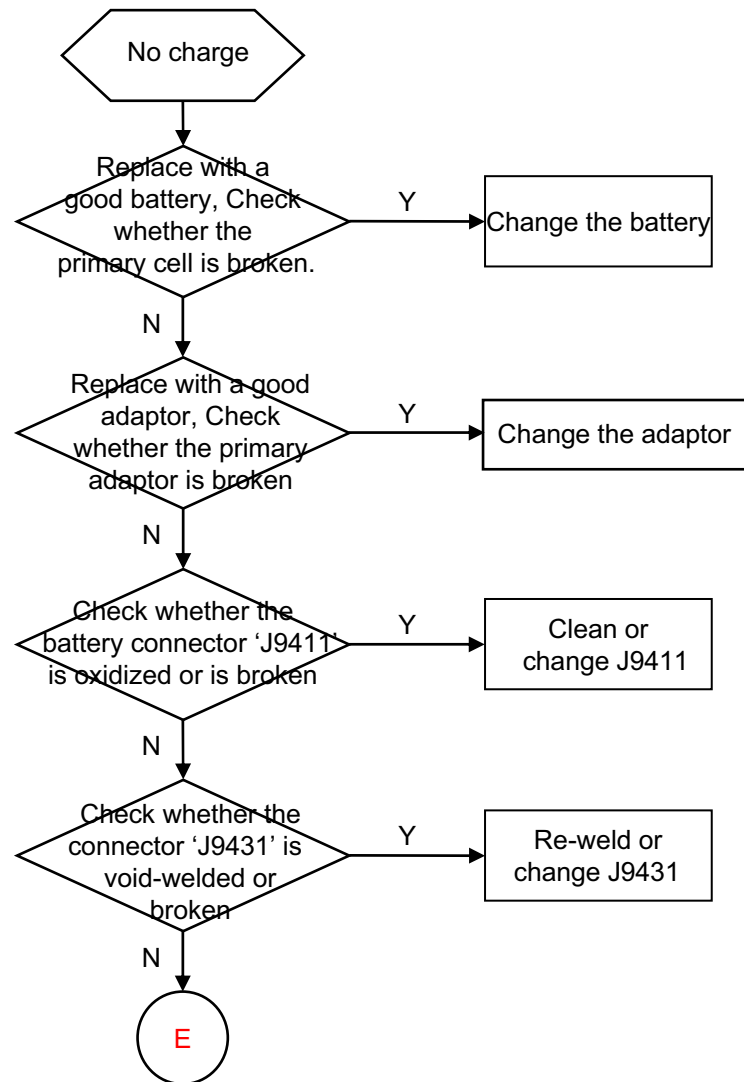
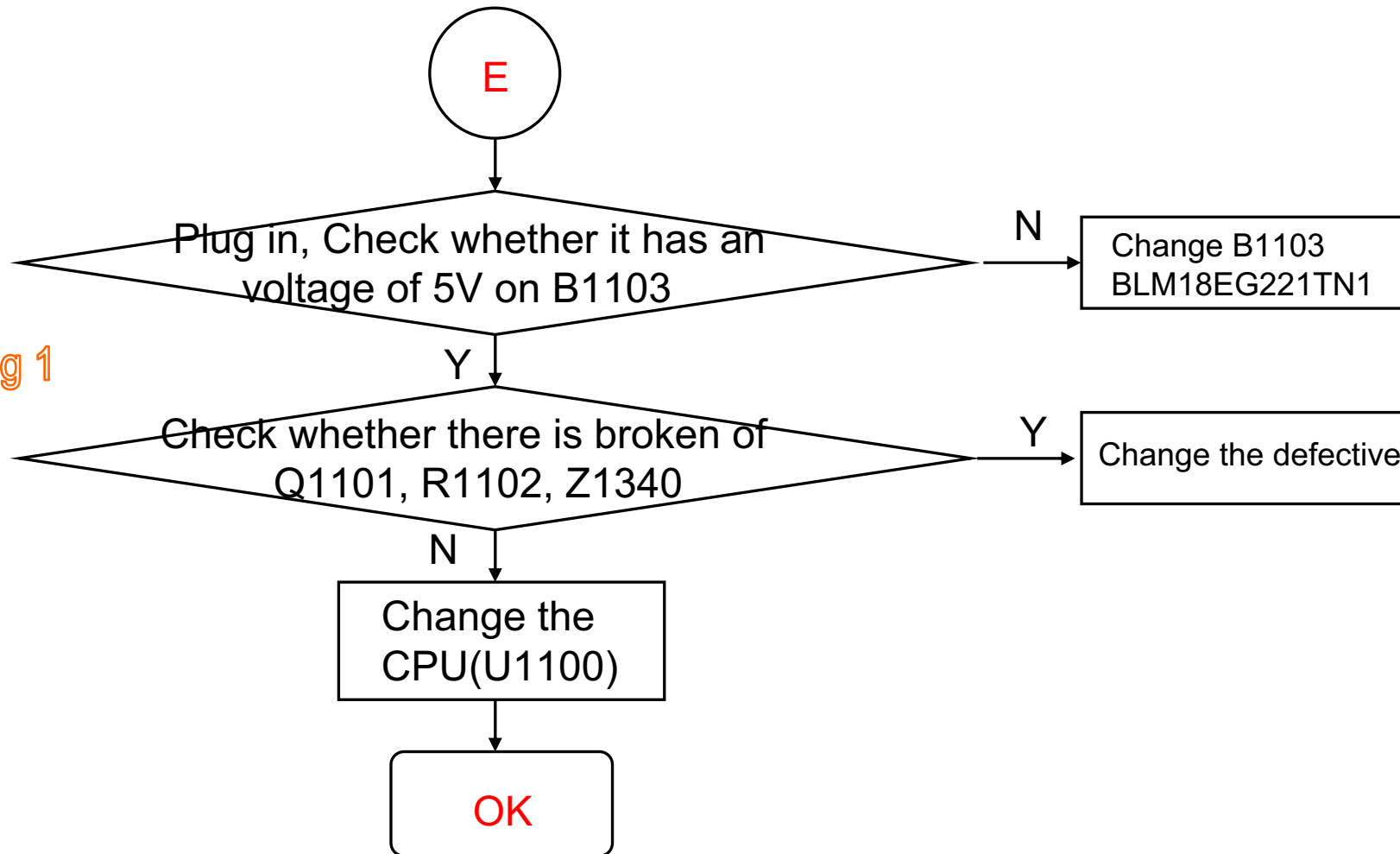
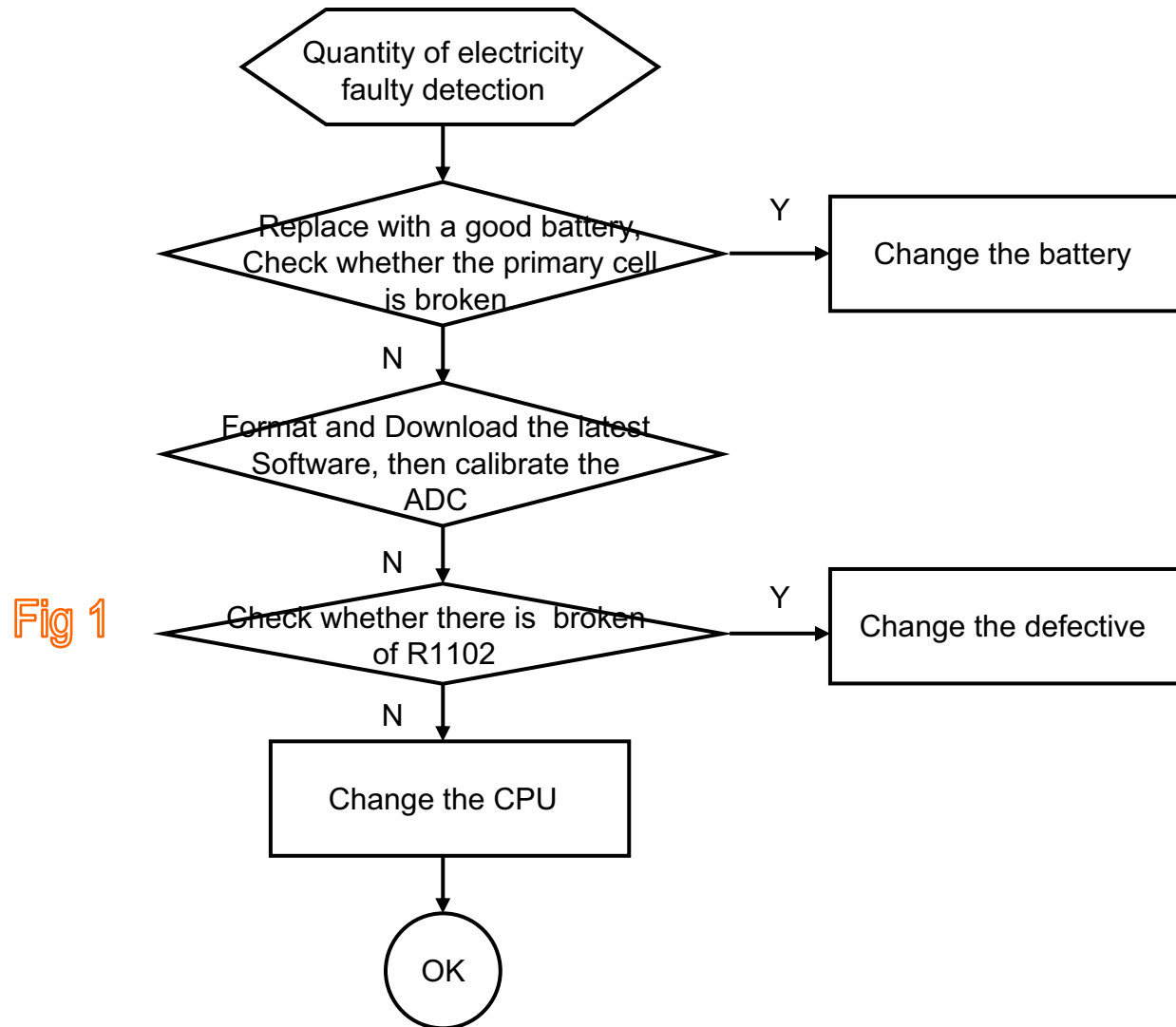


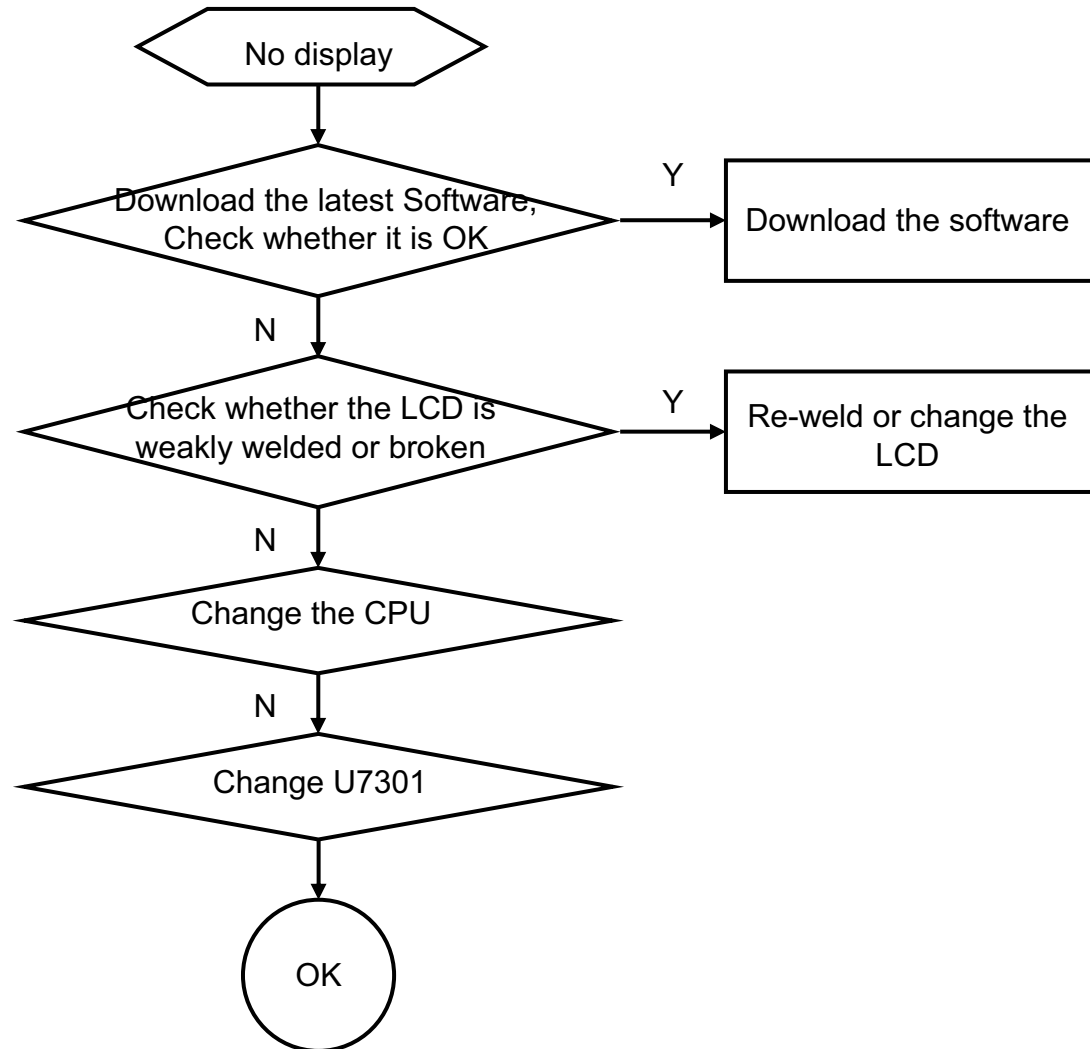
Fig 1



➤Quantity of electricity faulty detection



➤ No display



➤ LED NG (on the LCD)

Fig 4

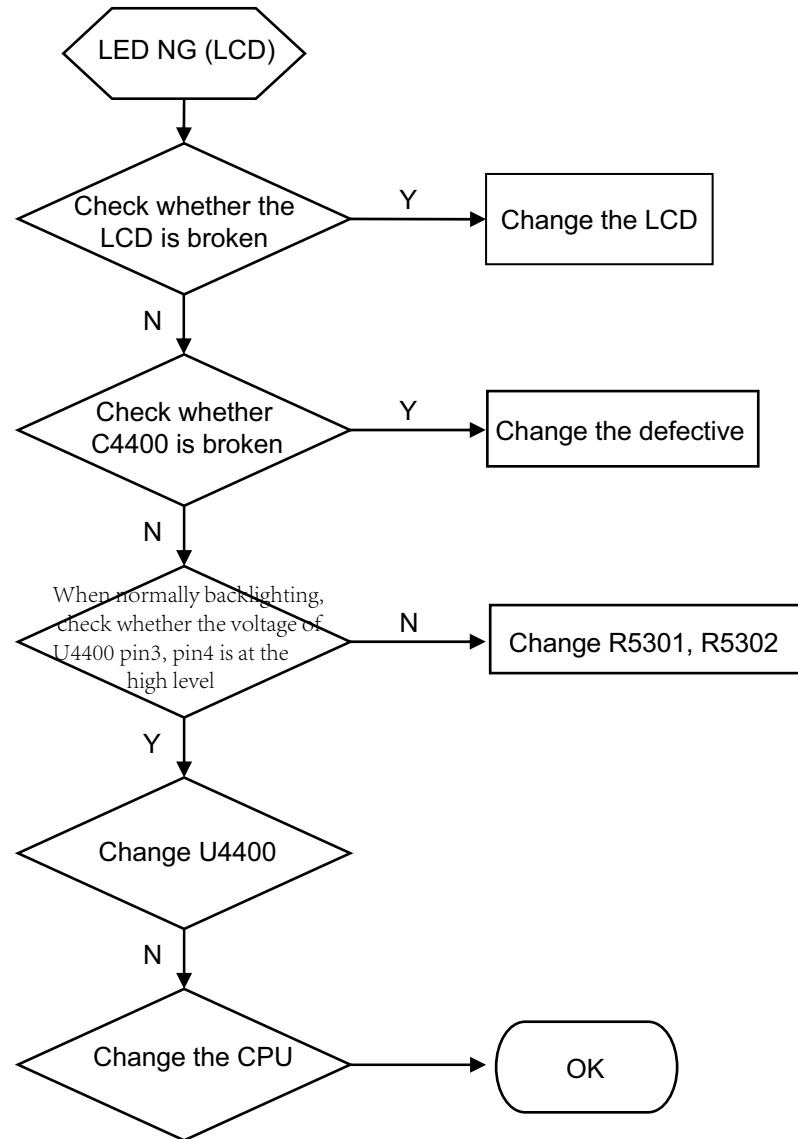
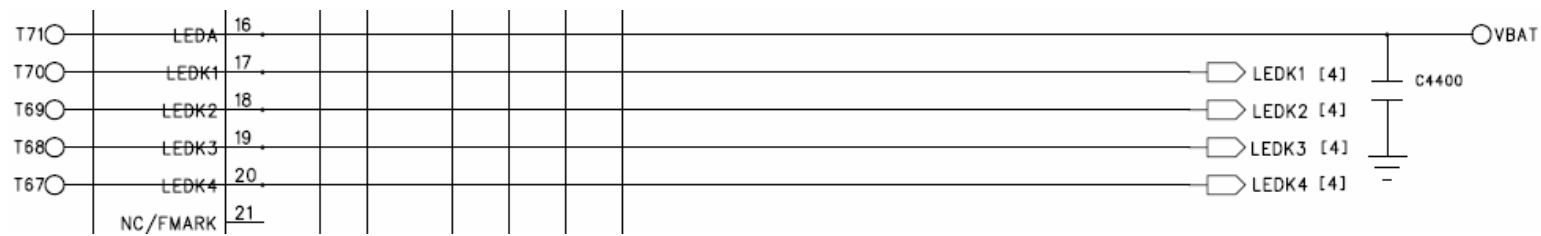
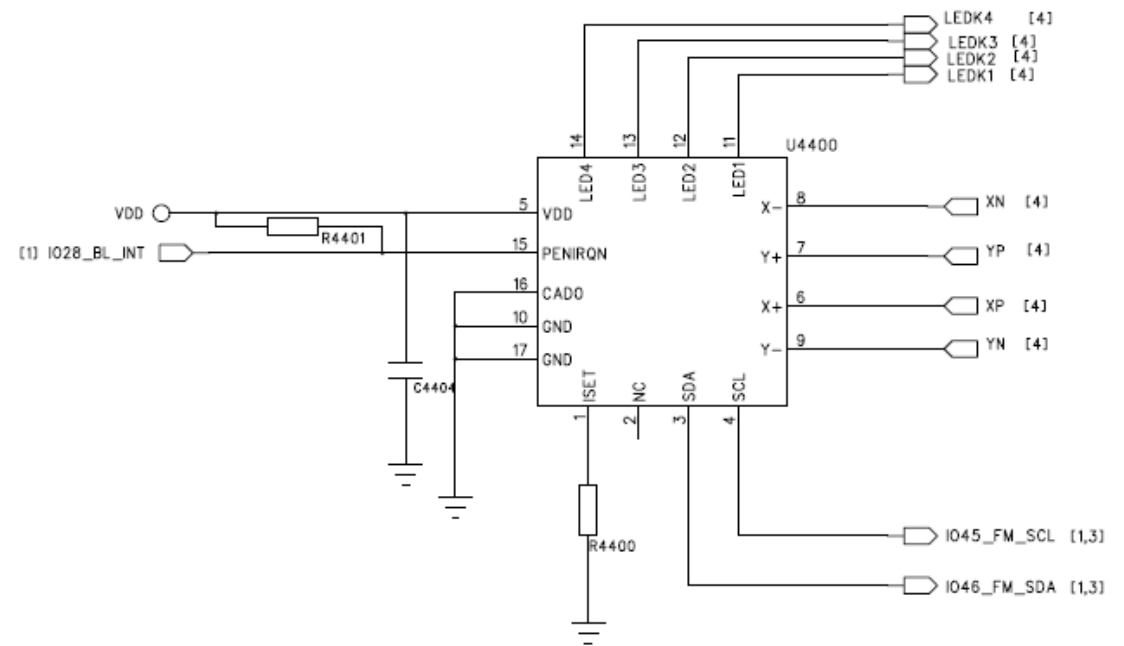


Fig 4



➤ LED NG (on the key board)

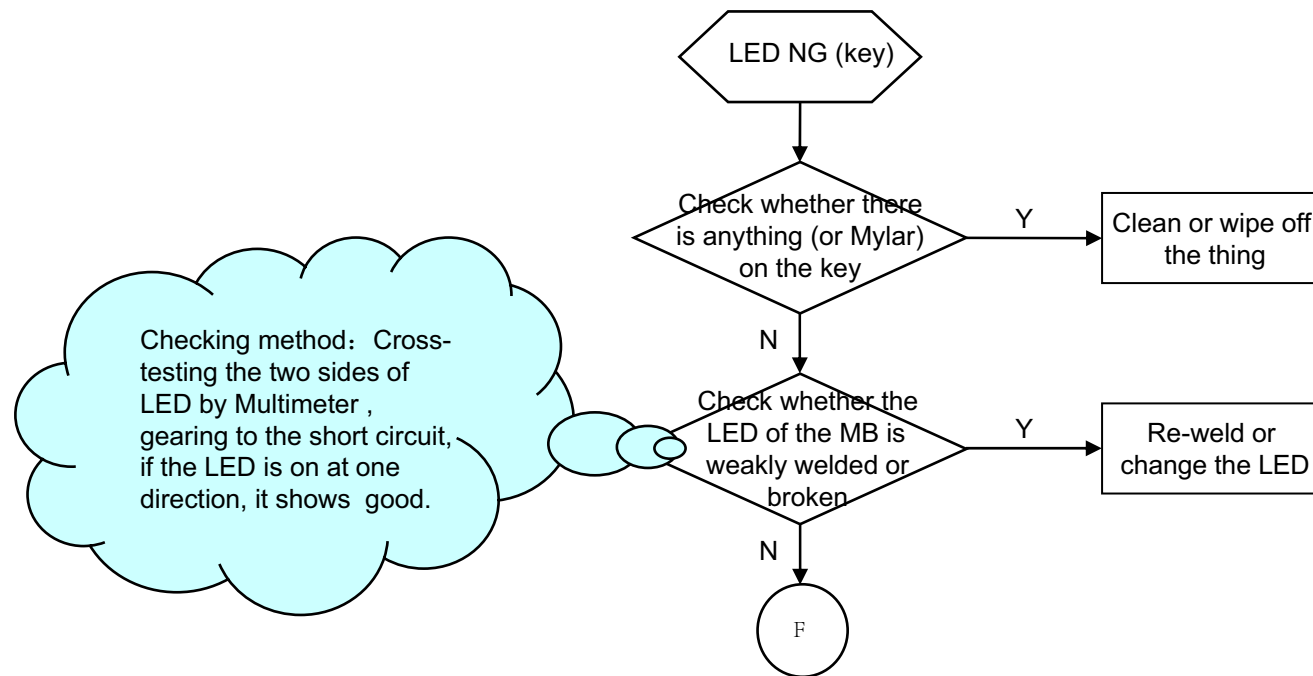
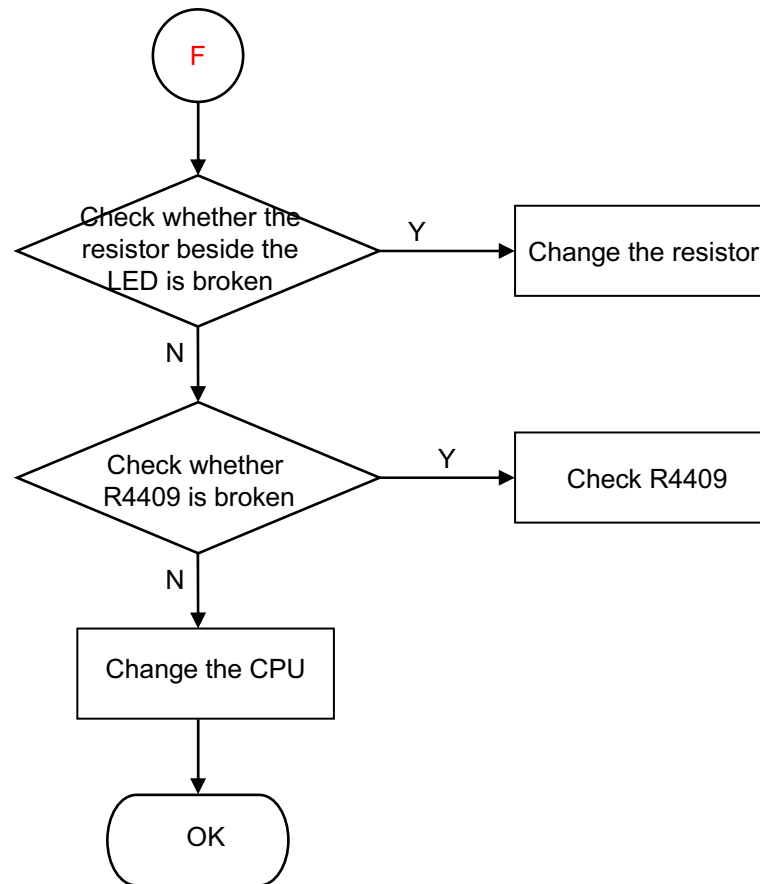


Fig 3



➤ Key NG

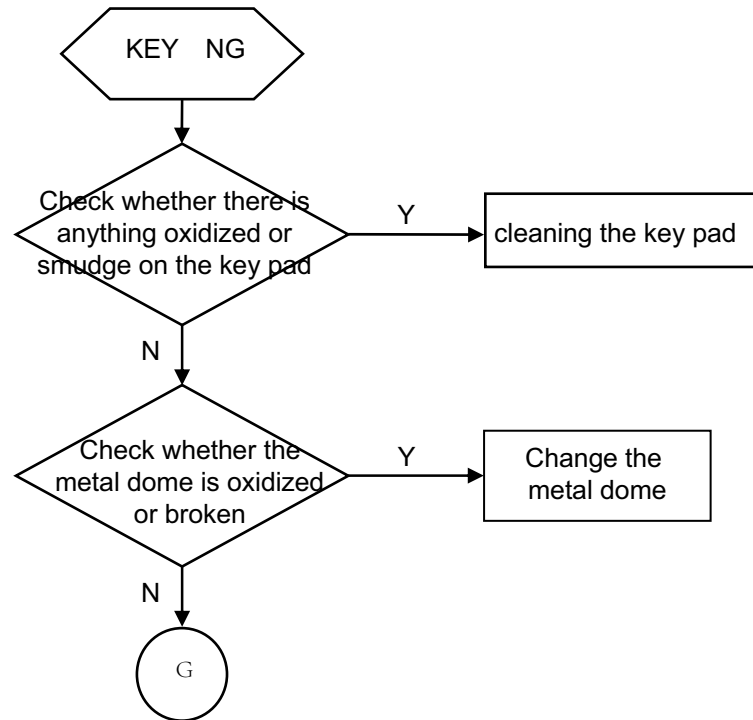
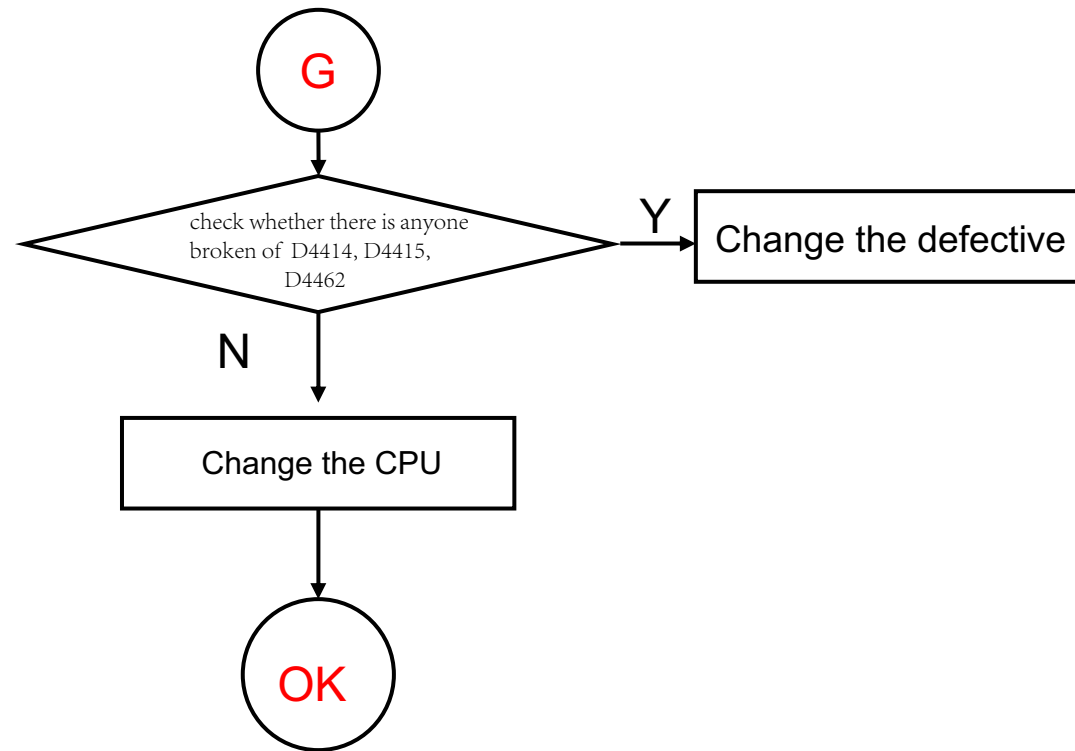


Fig 3



➤ No ring

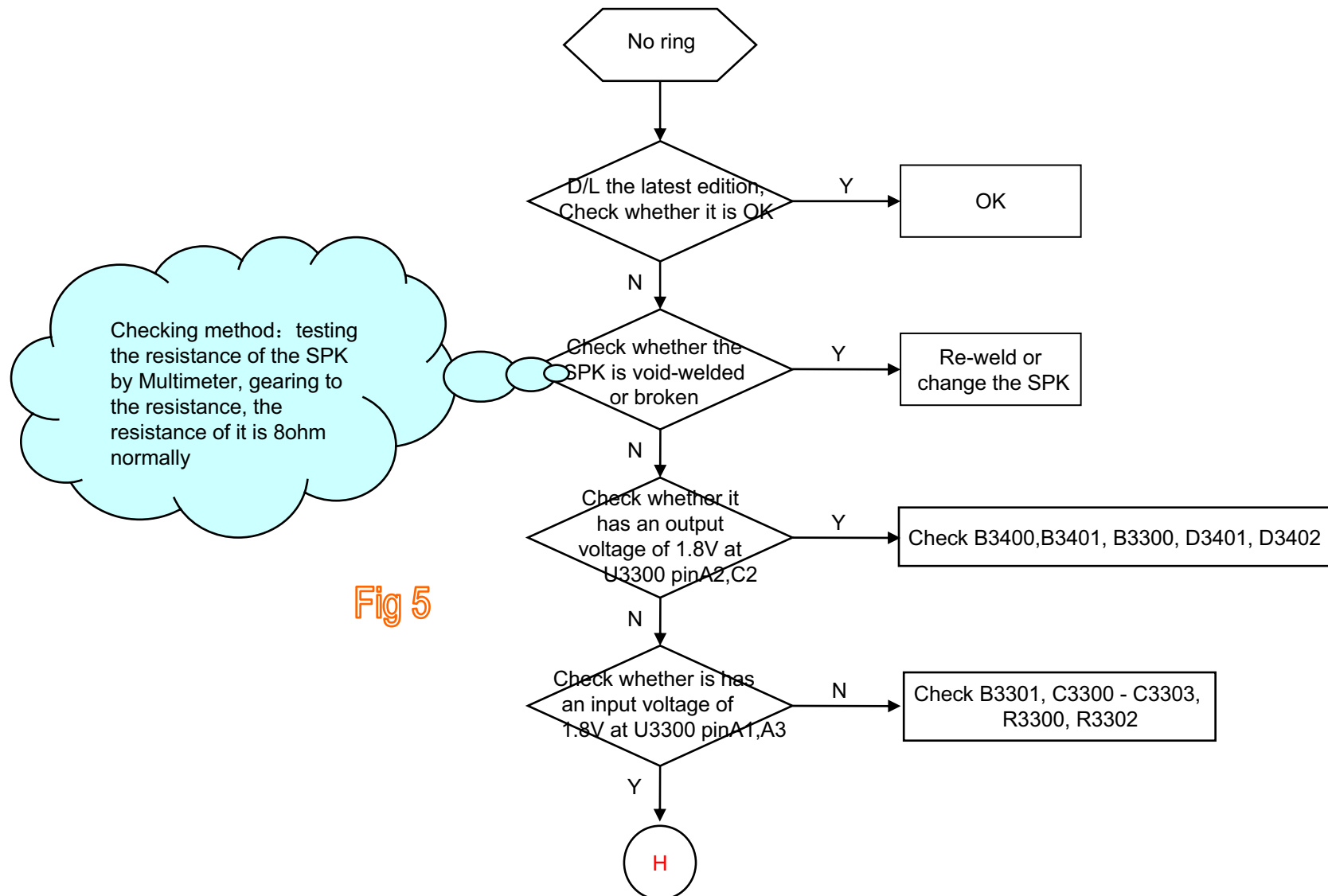


Fig 5

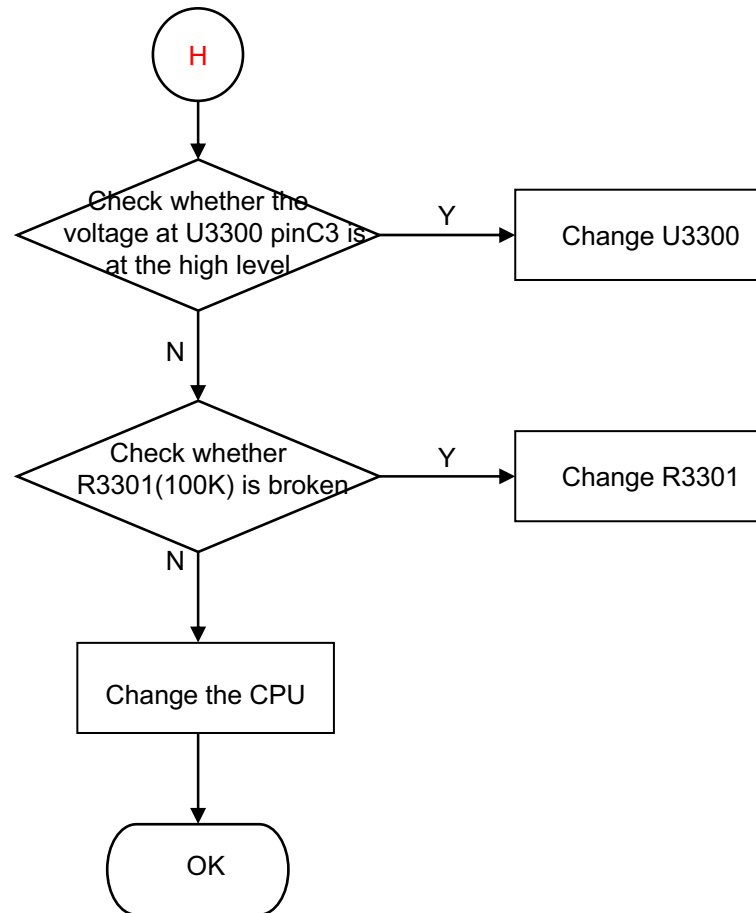
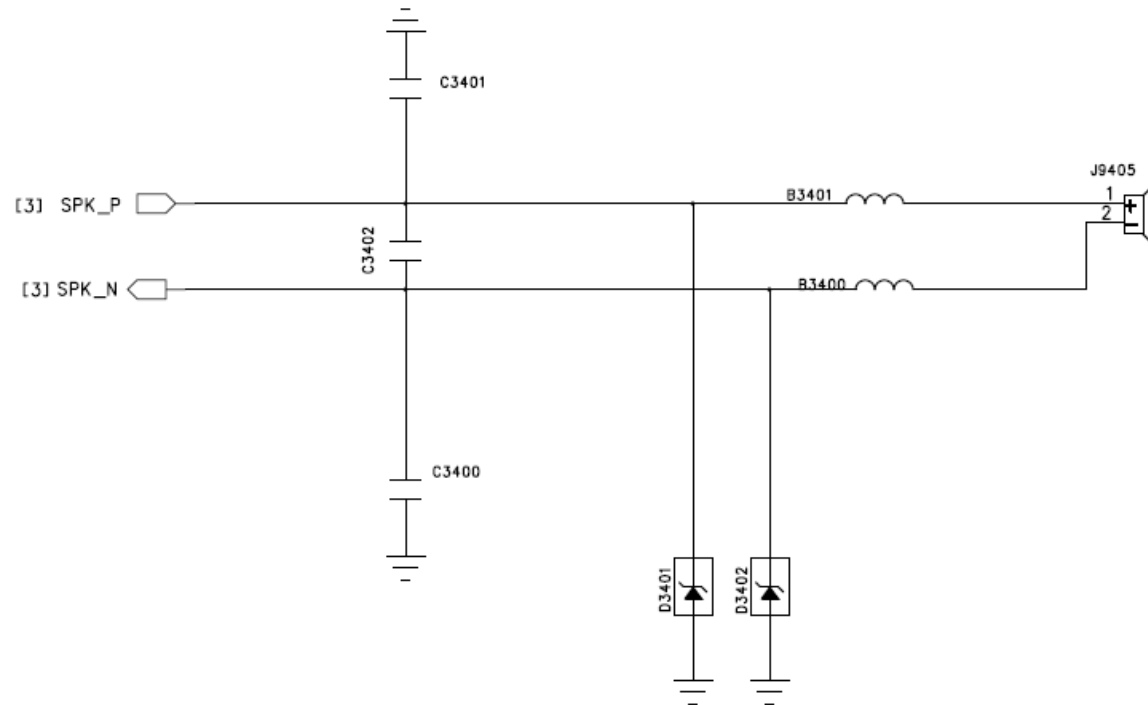
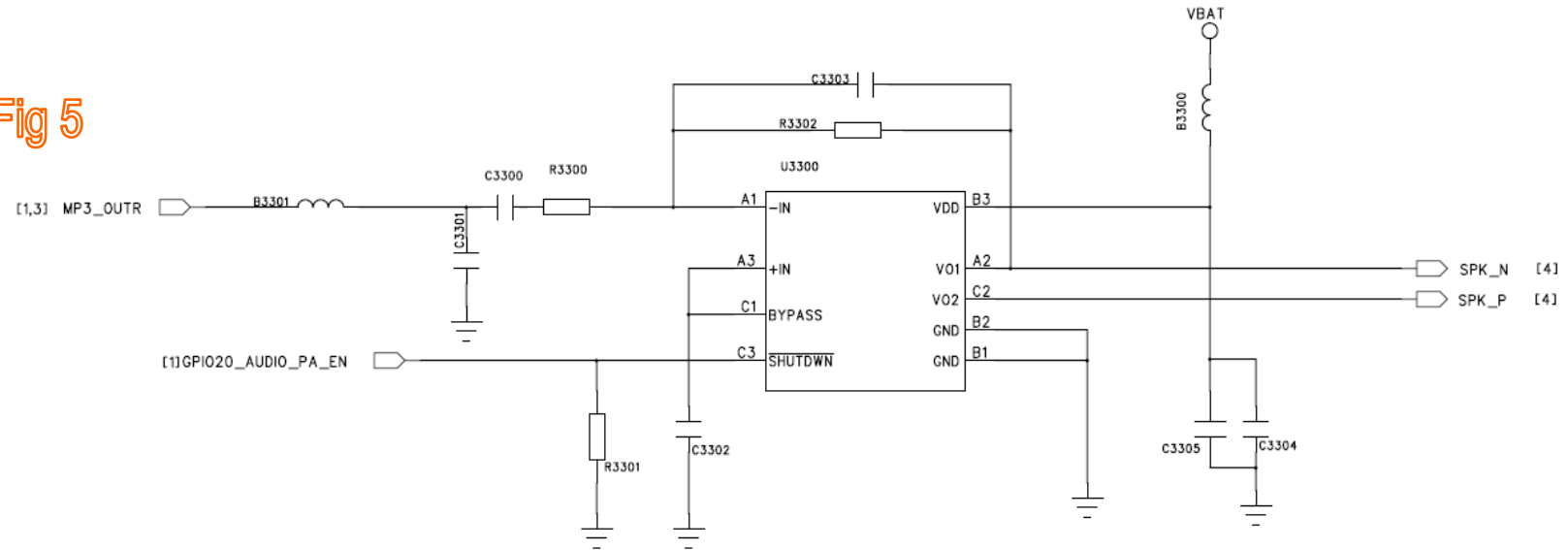


Fig 5



➤ No receiving voice

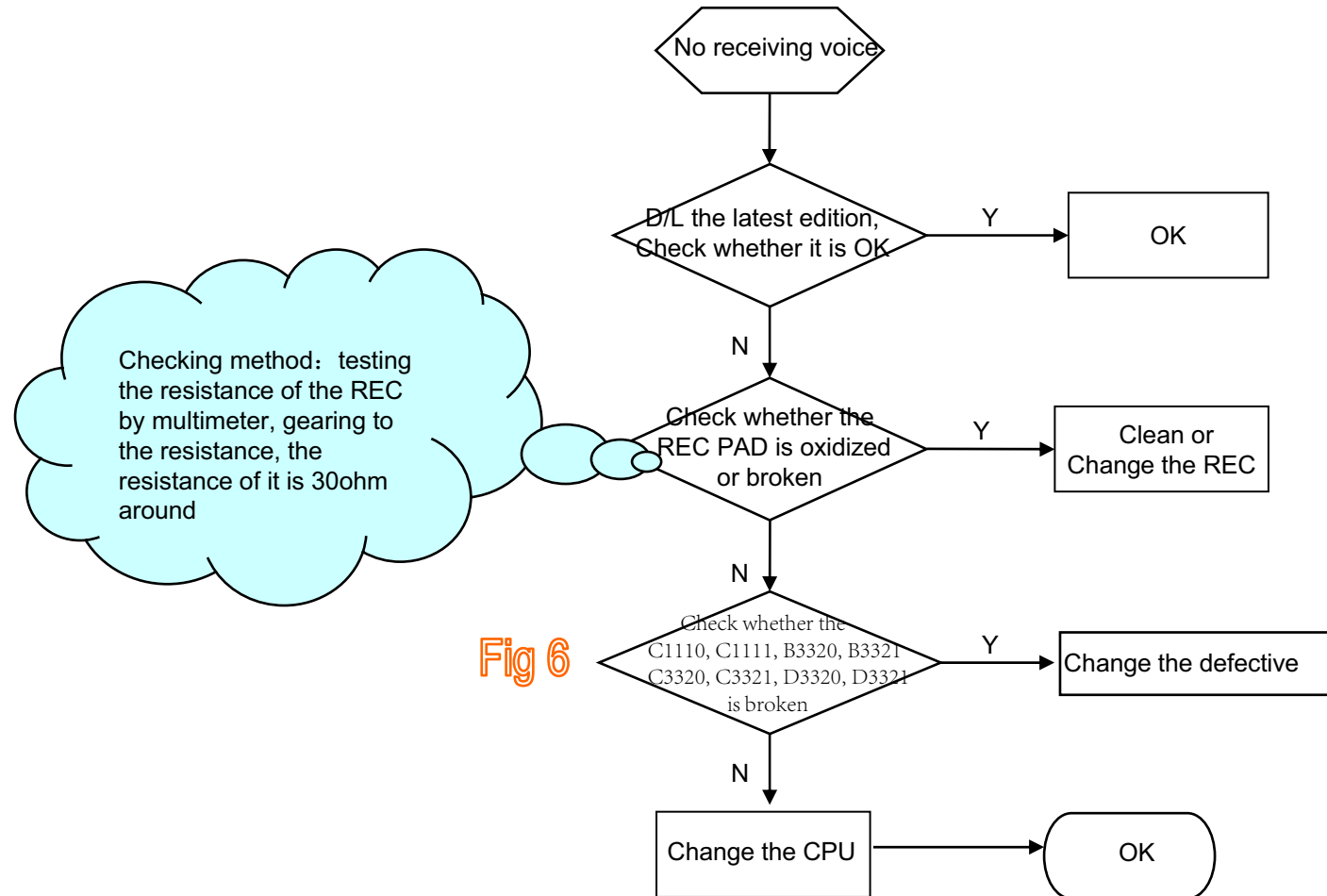
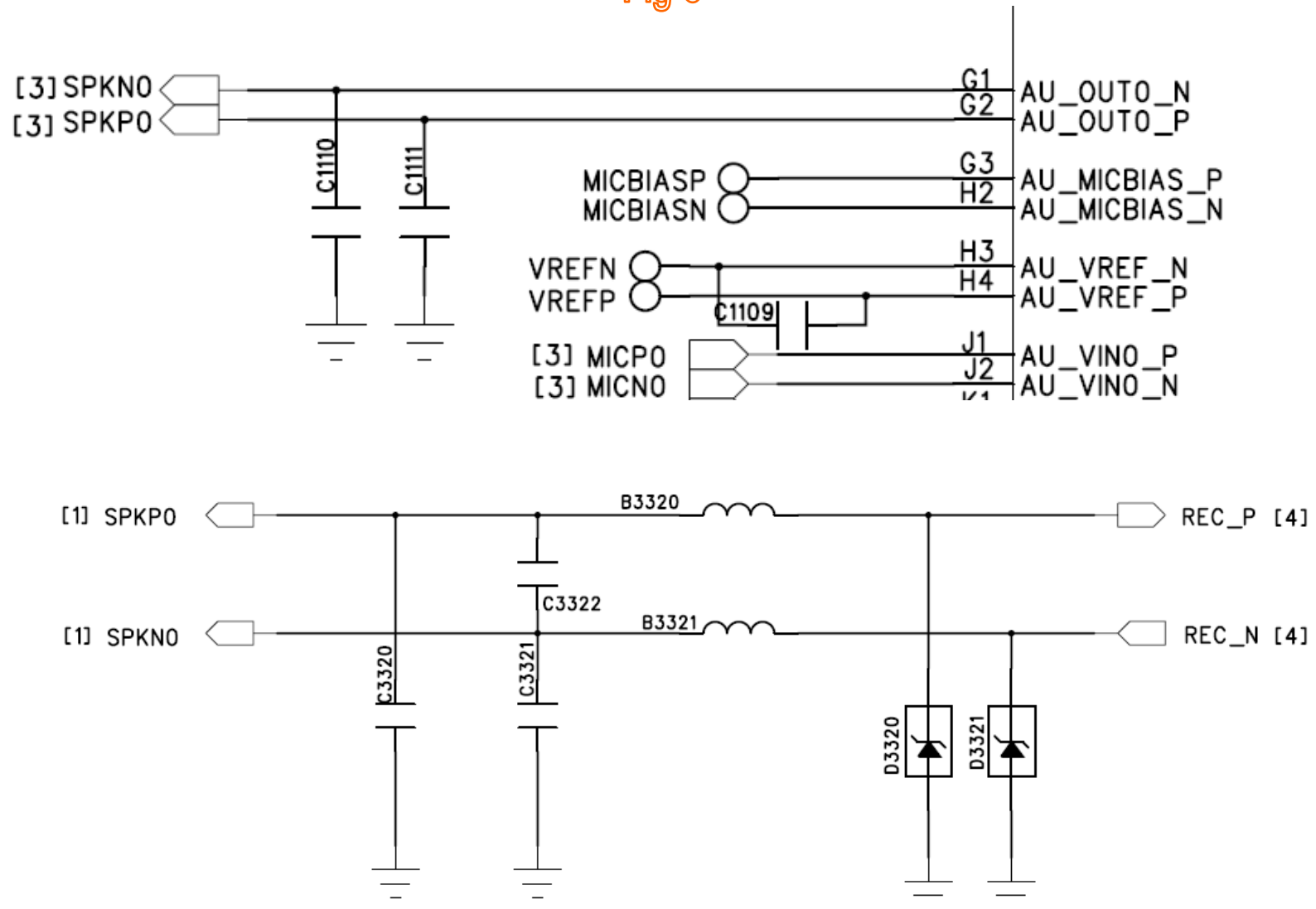


Fig 6



➤ **No sending voice or the voice is small**

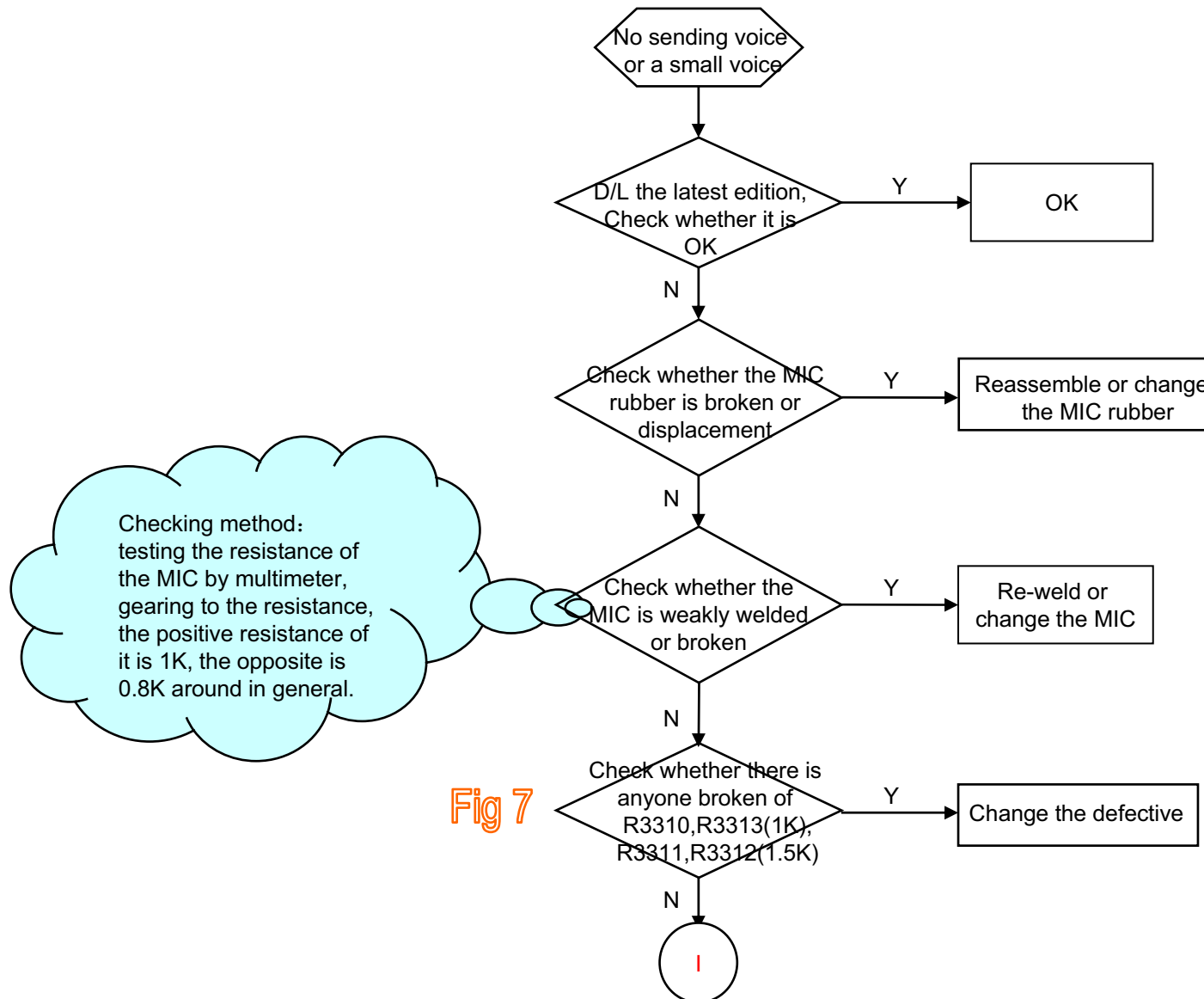


Fig 7

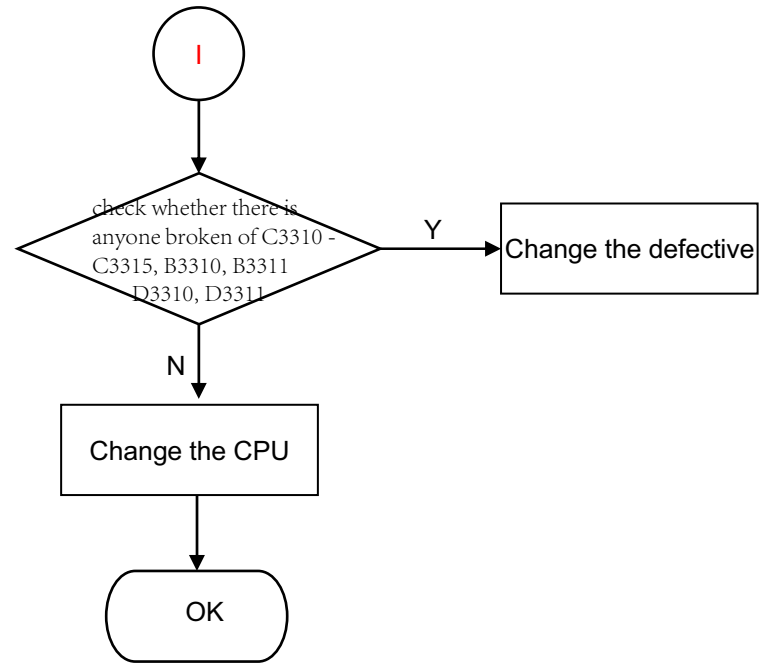
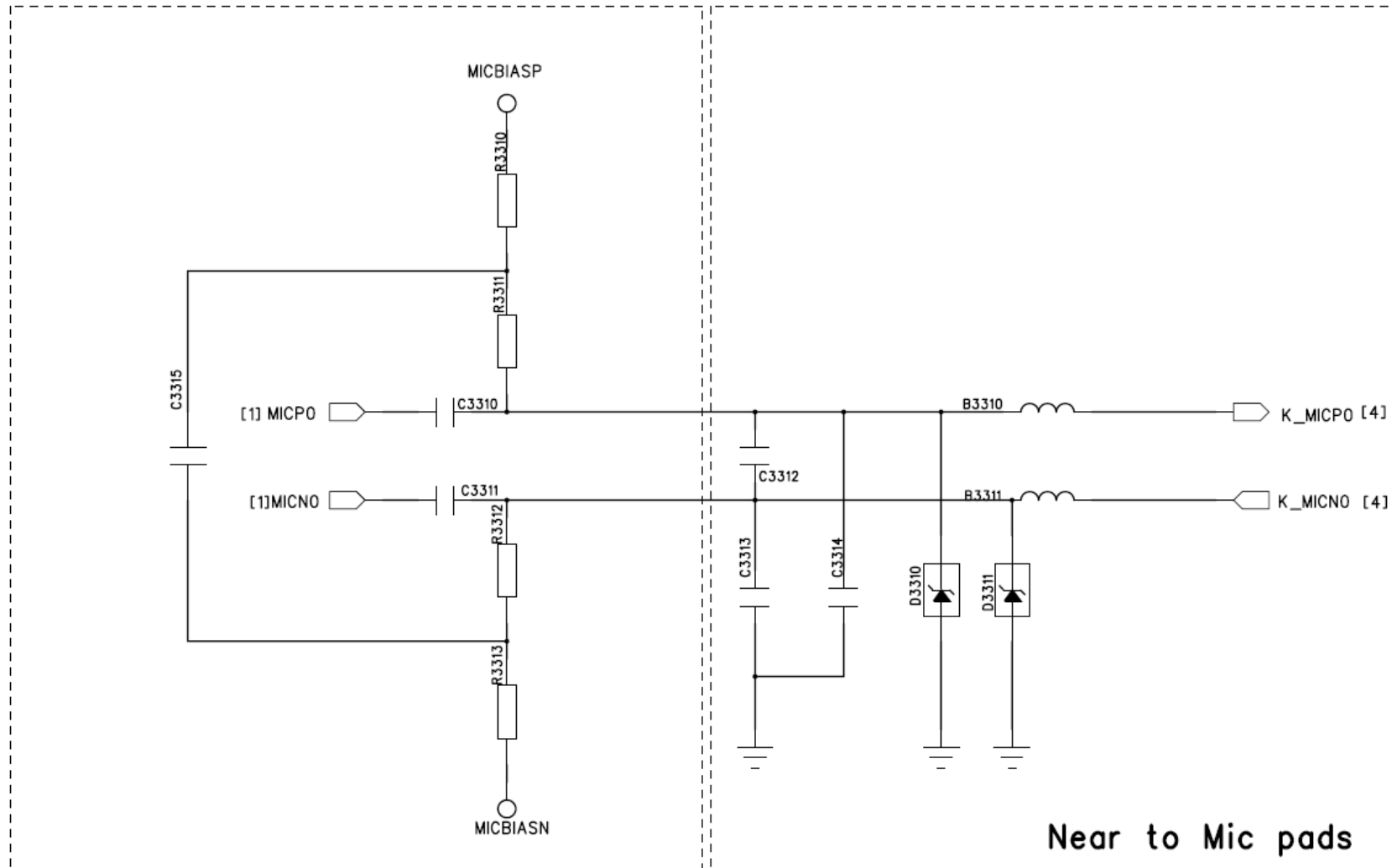
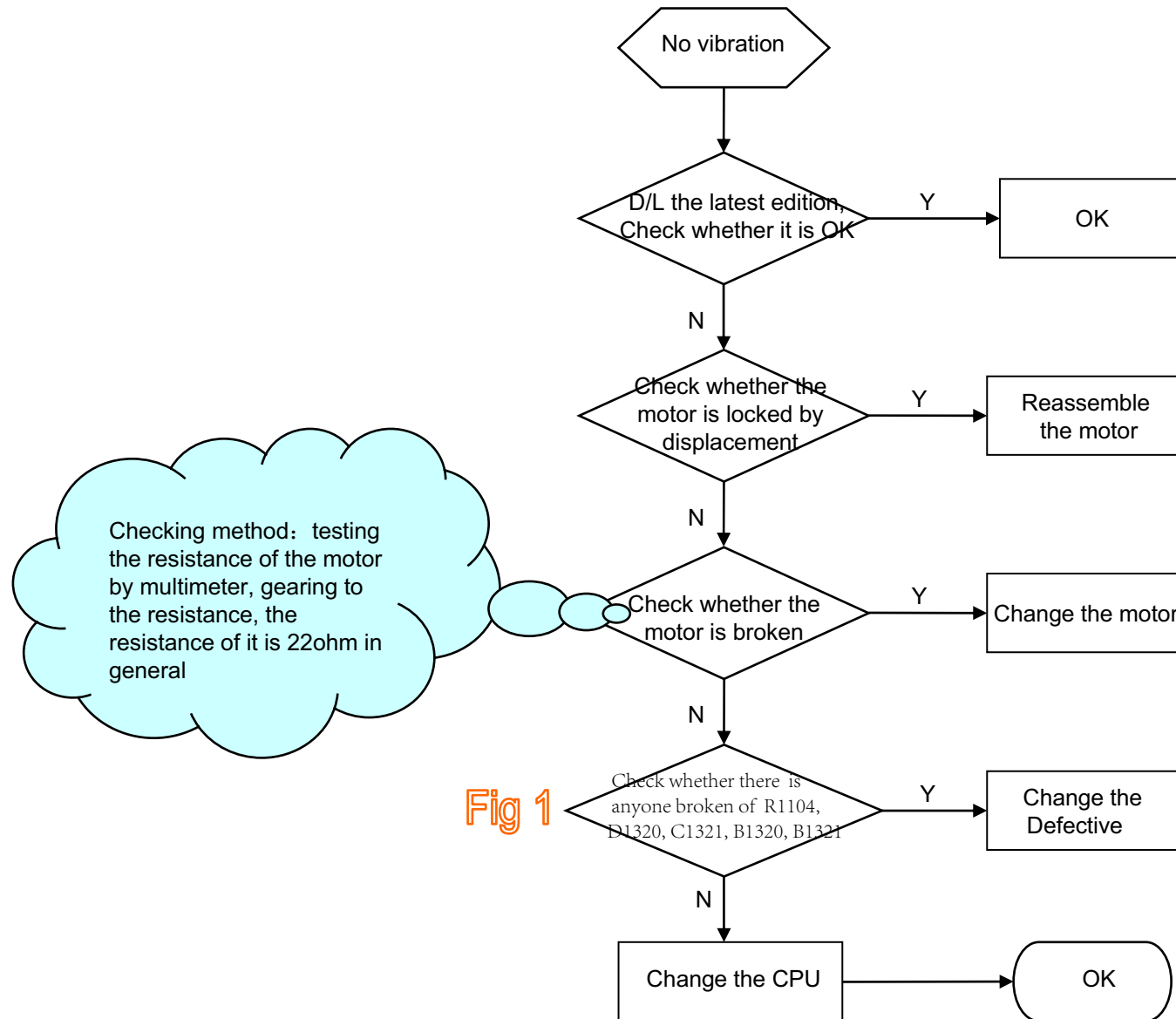


Fig 7

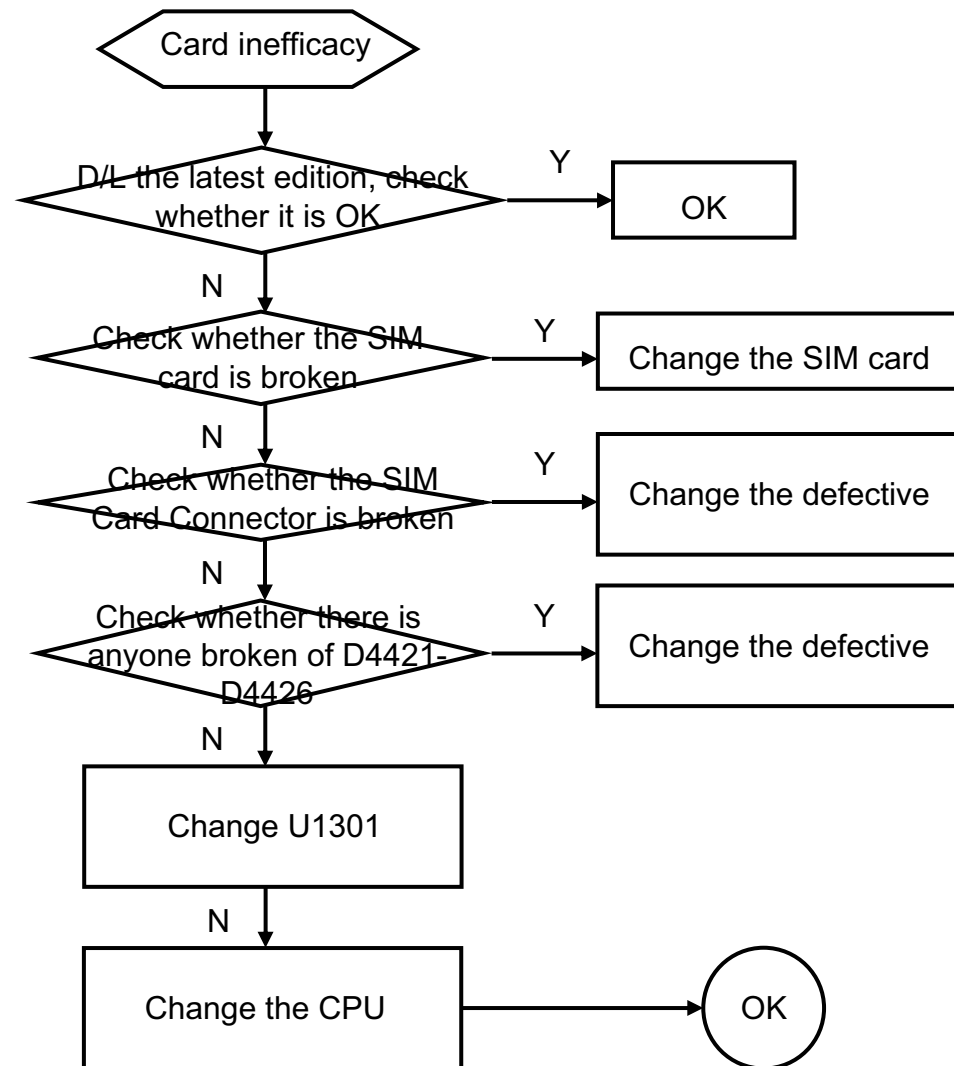
Place these part near BaseBand



➤ No vibration



➤ Card inefficacy



➤ Camera inefficacy

Fig 9

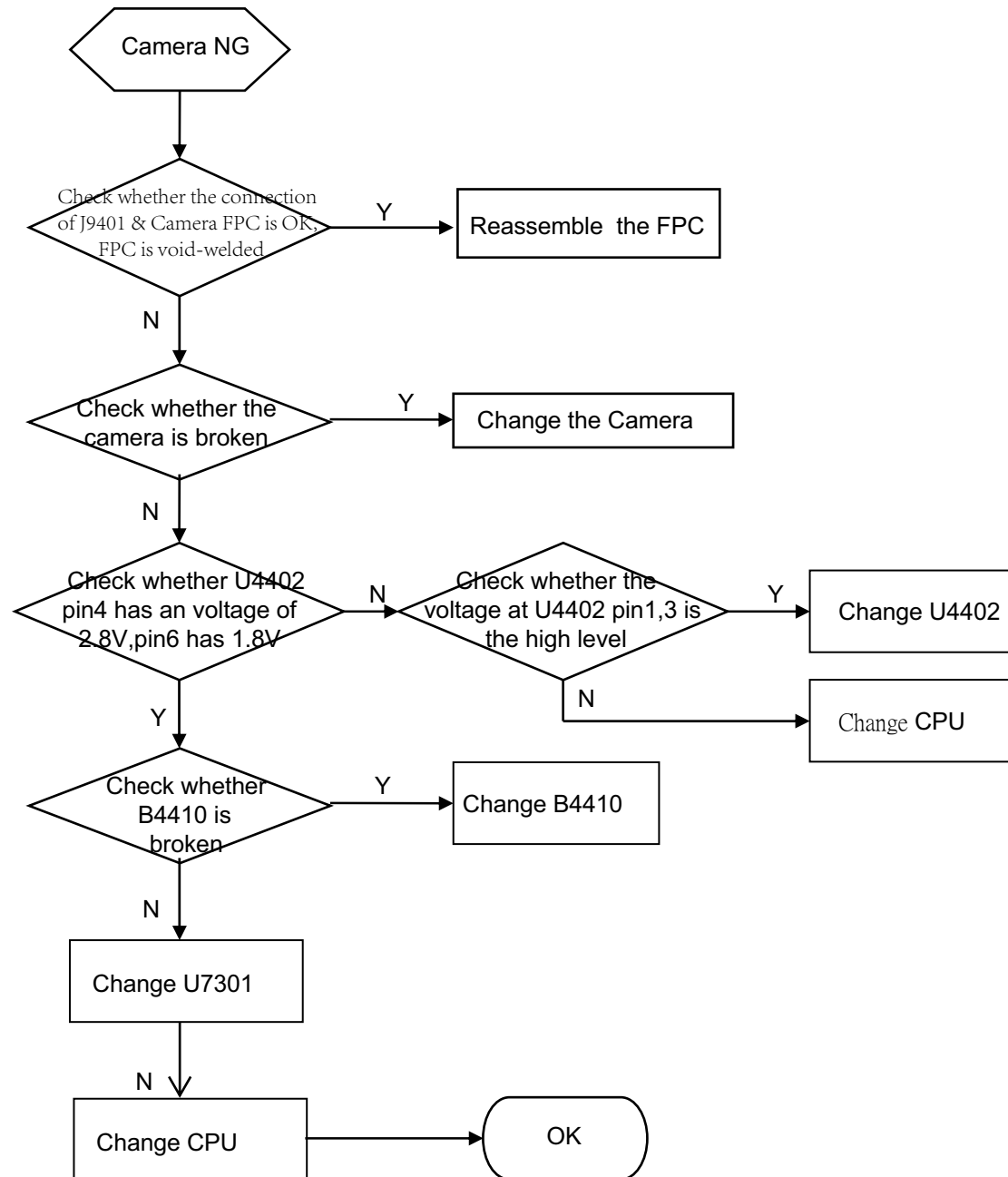
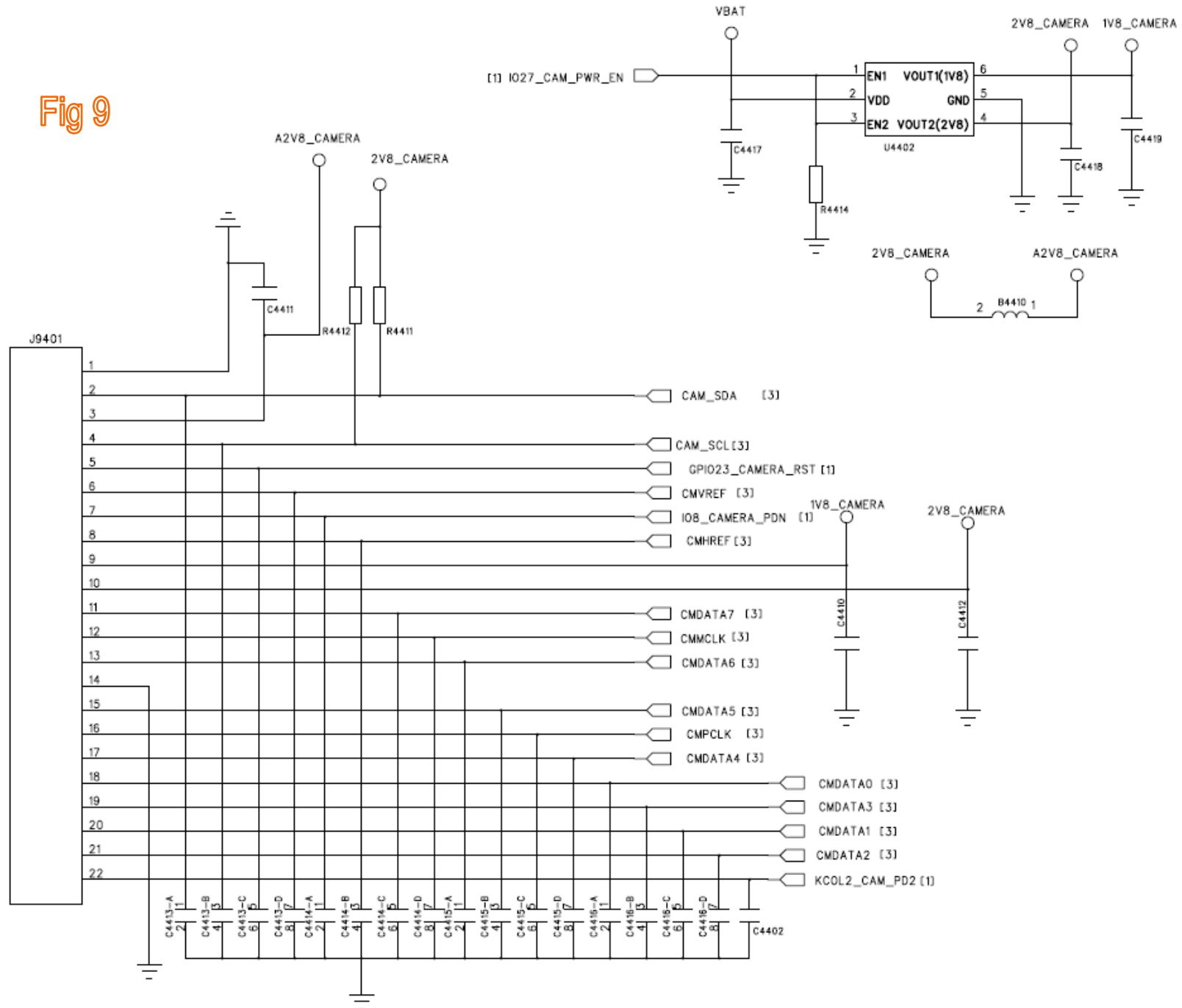


Fig 9



➤ Bluetooth inefficacy

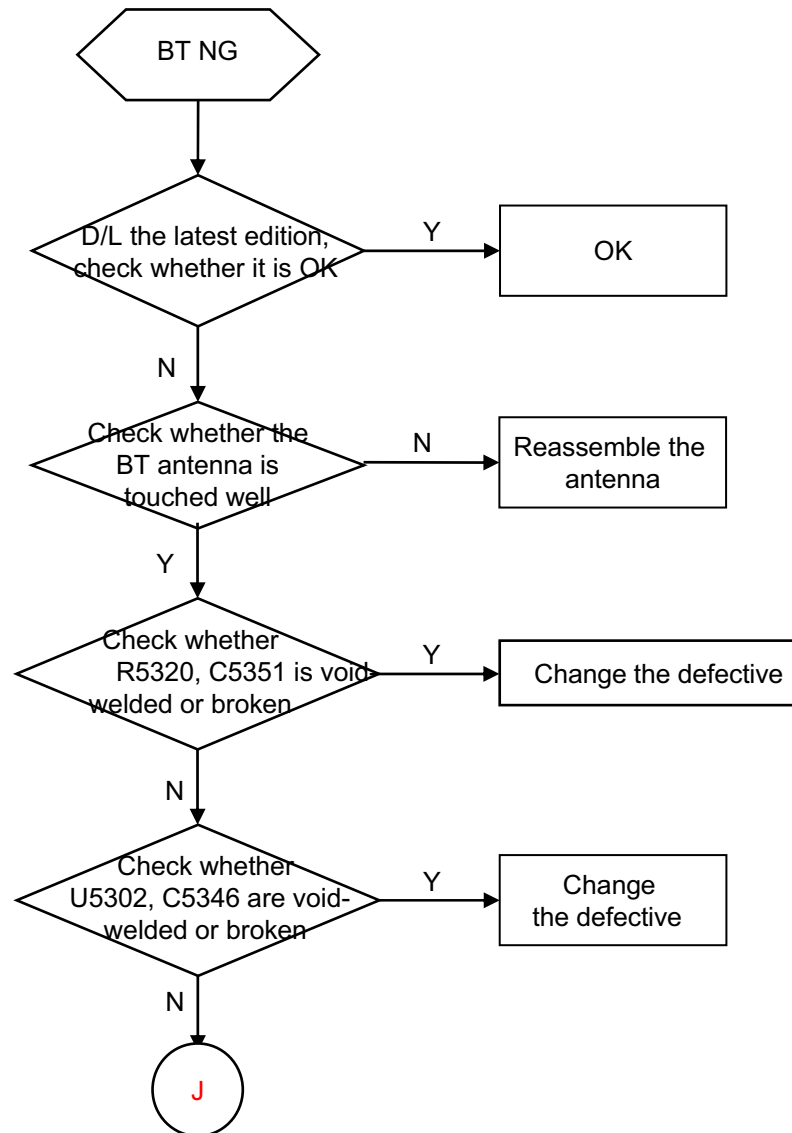


Fig 11

Fig 12

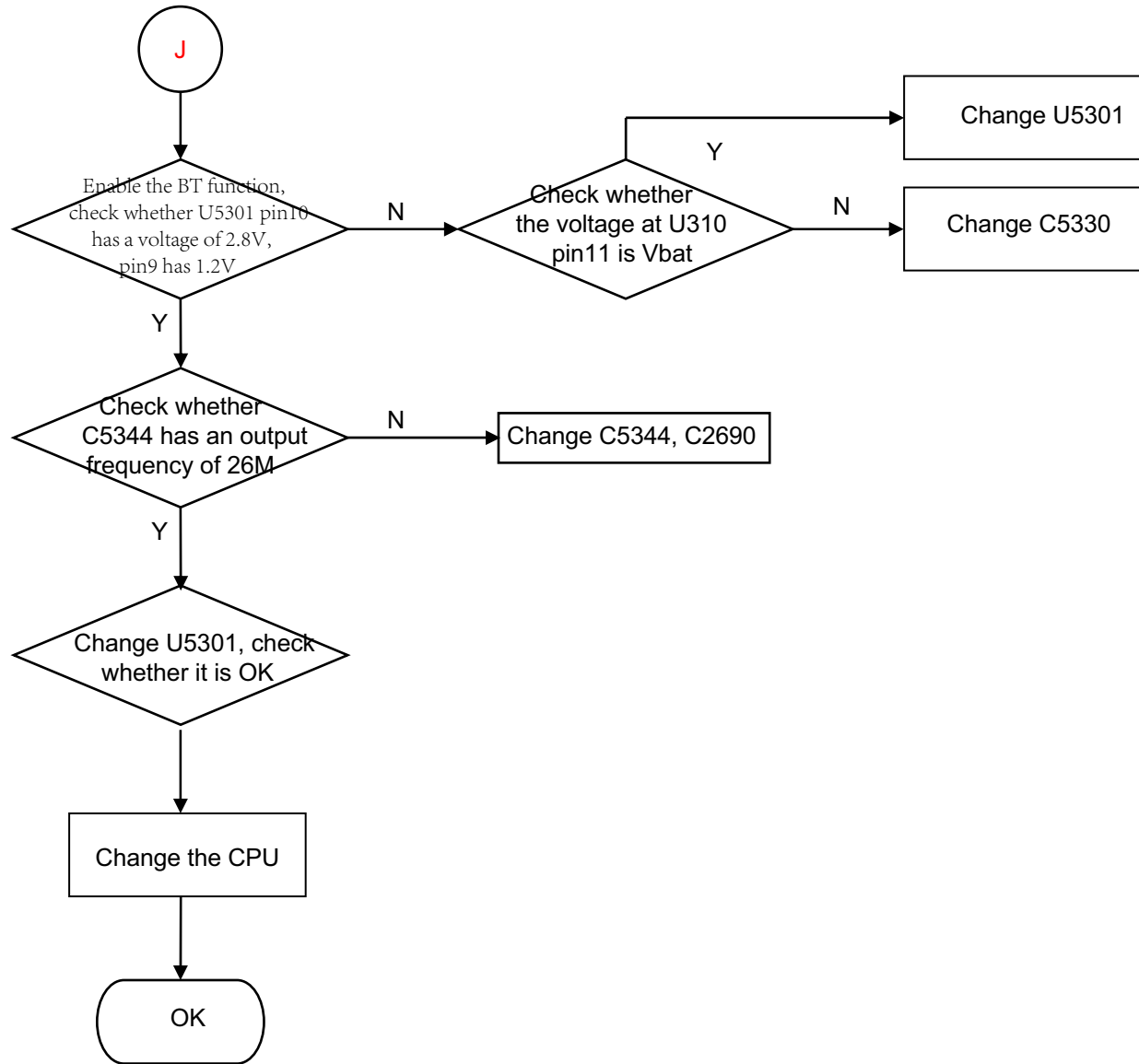


Fig 11

Demo change ANT

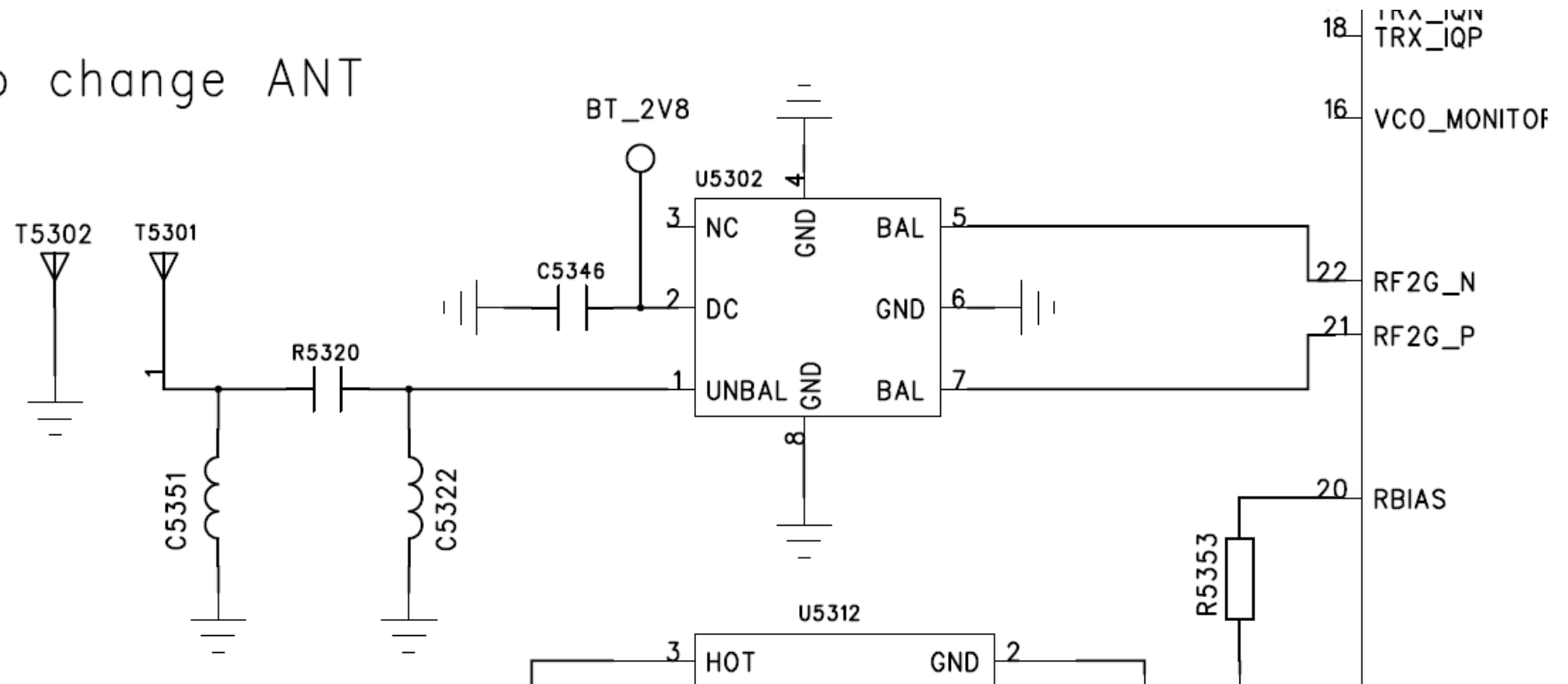
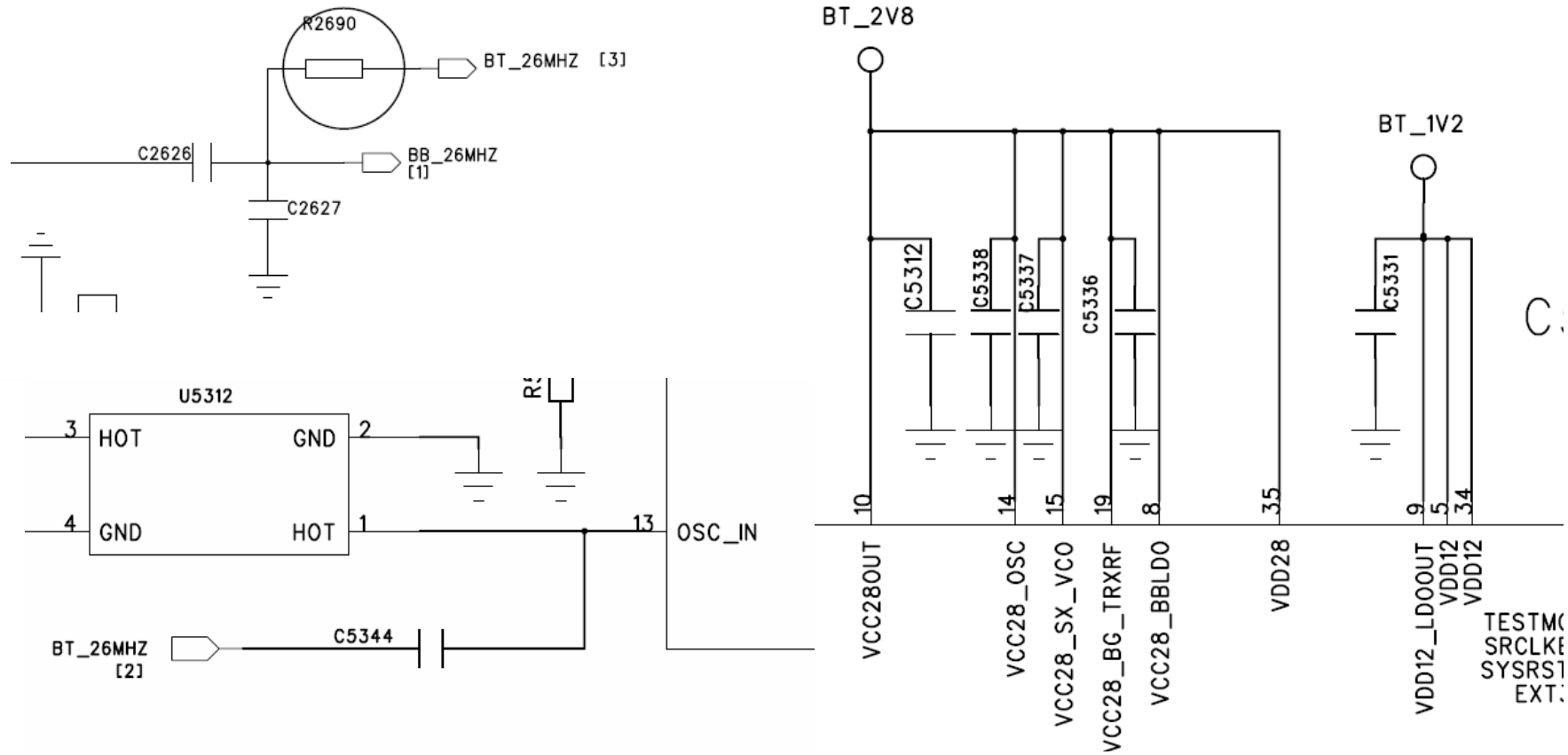


Fig 12

BC6888,deleteC2690



➤ TF card inefficacy

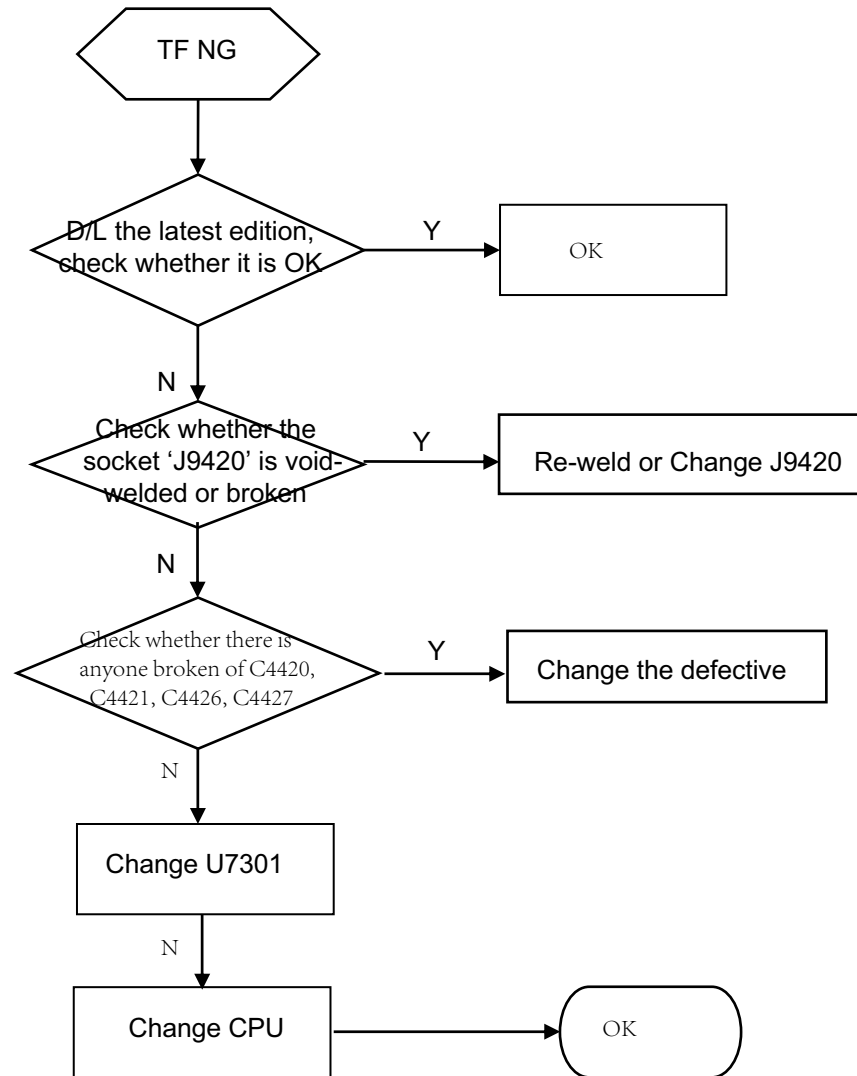
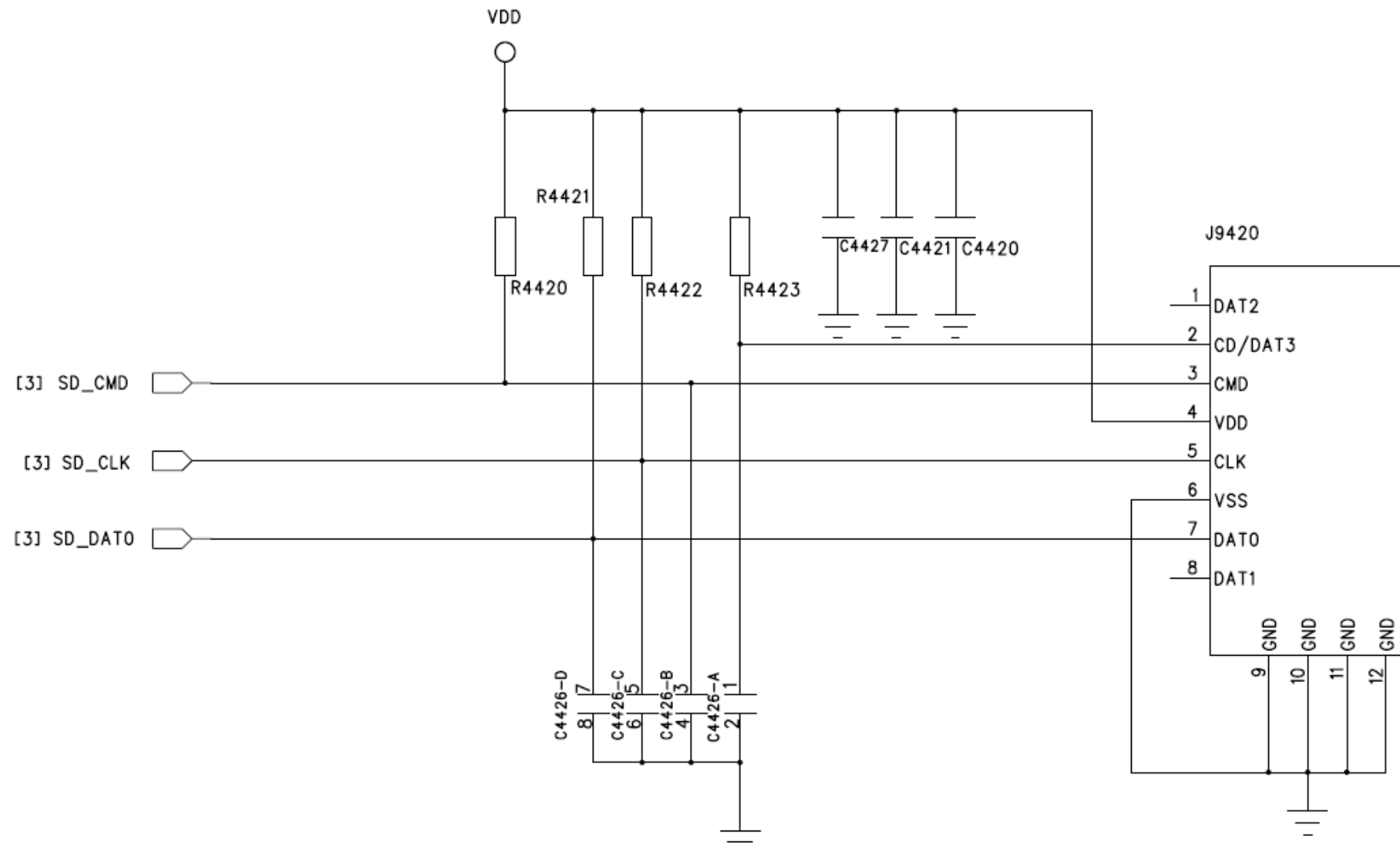
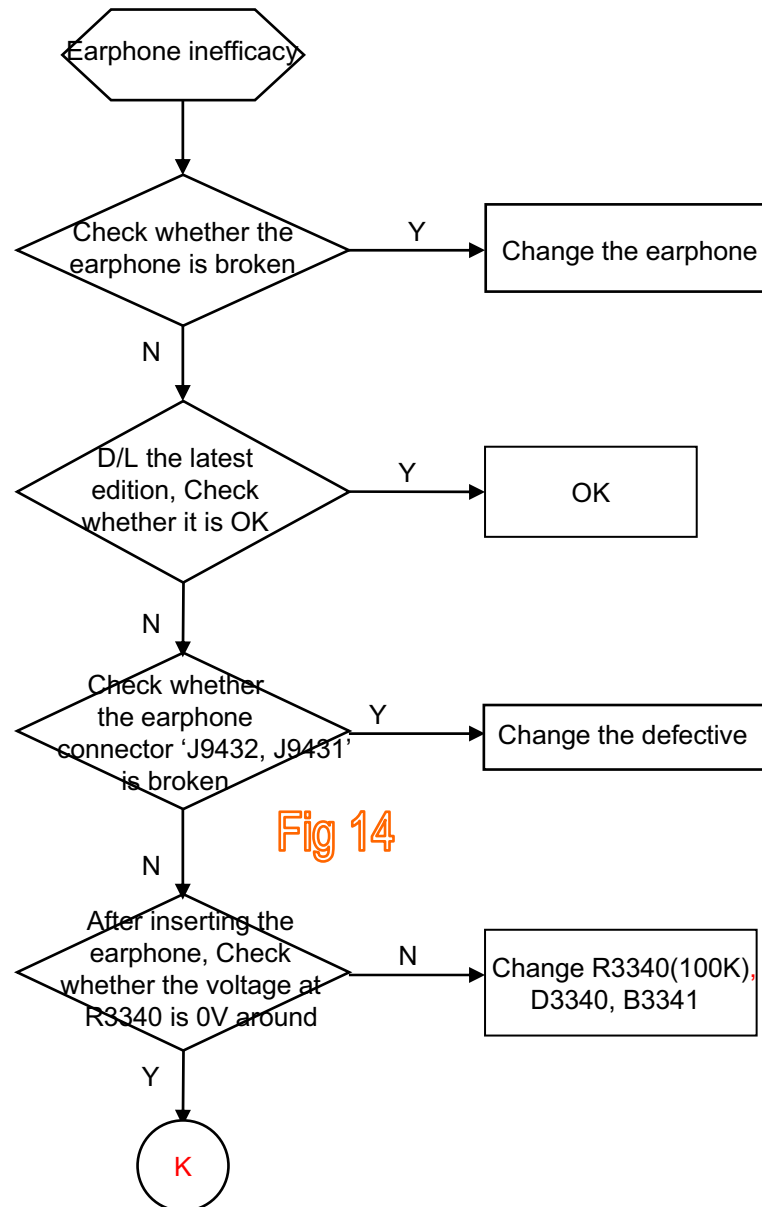


Fig 13

Fig 13



➤ Earphone inefficacy



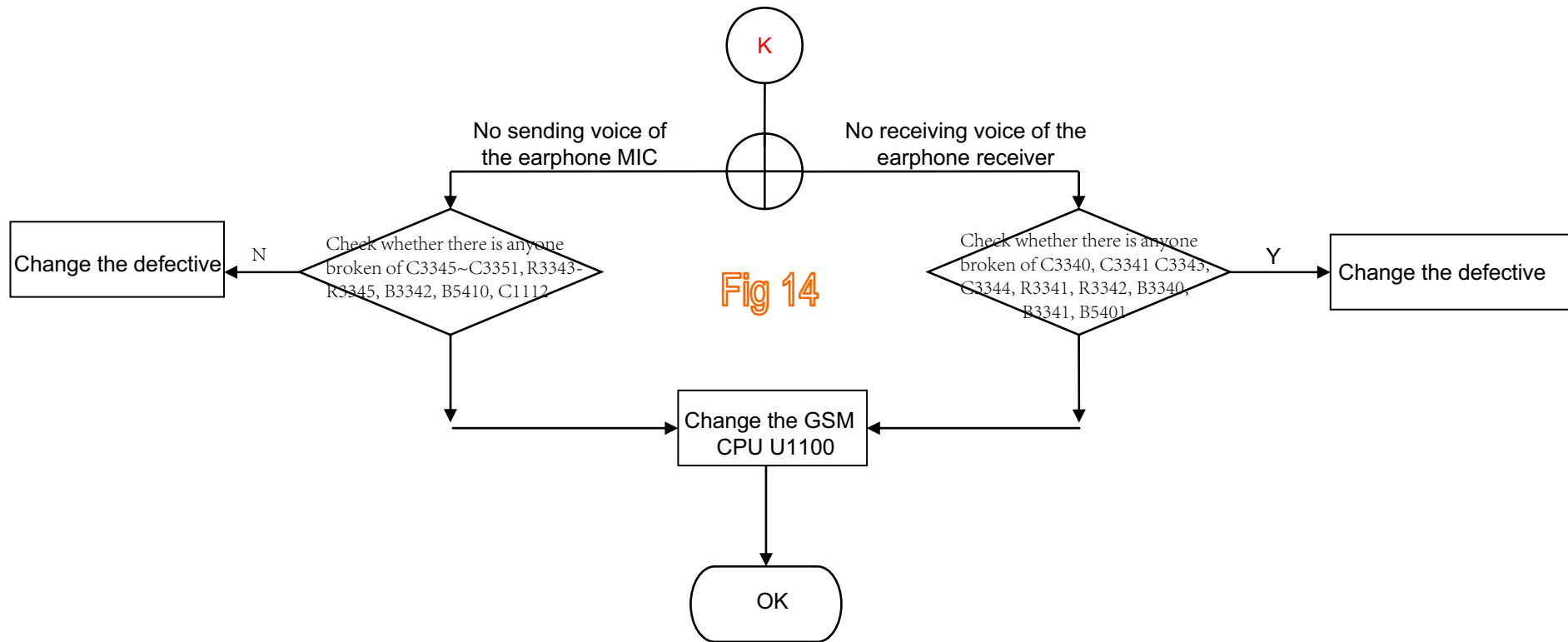
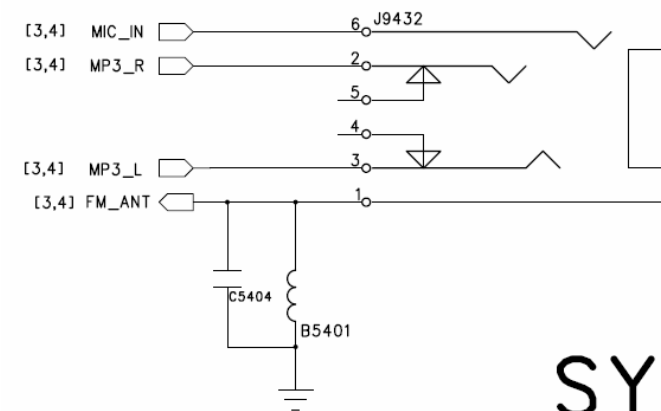
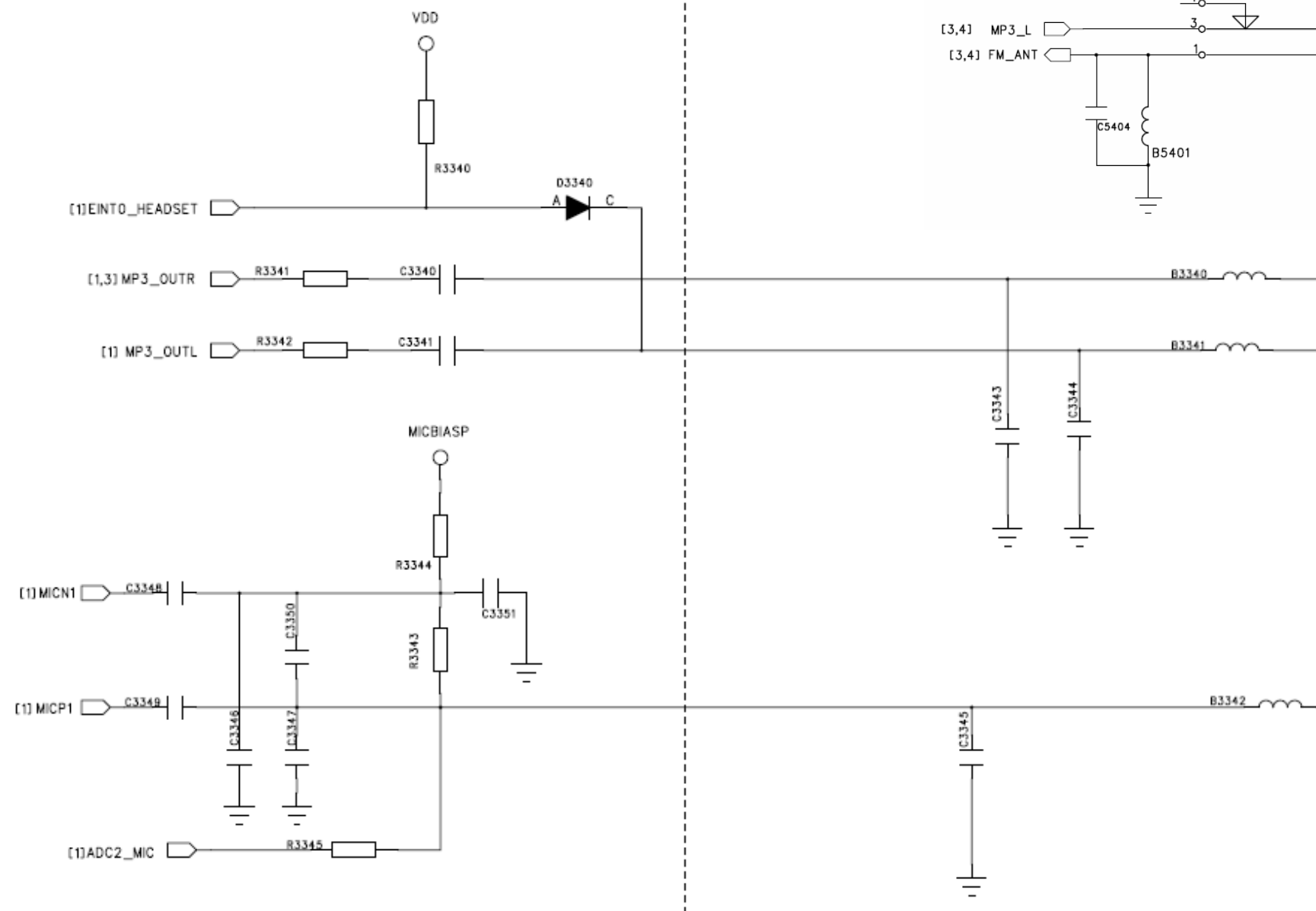


Fig 14



SYS

➤ FM inefficacy

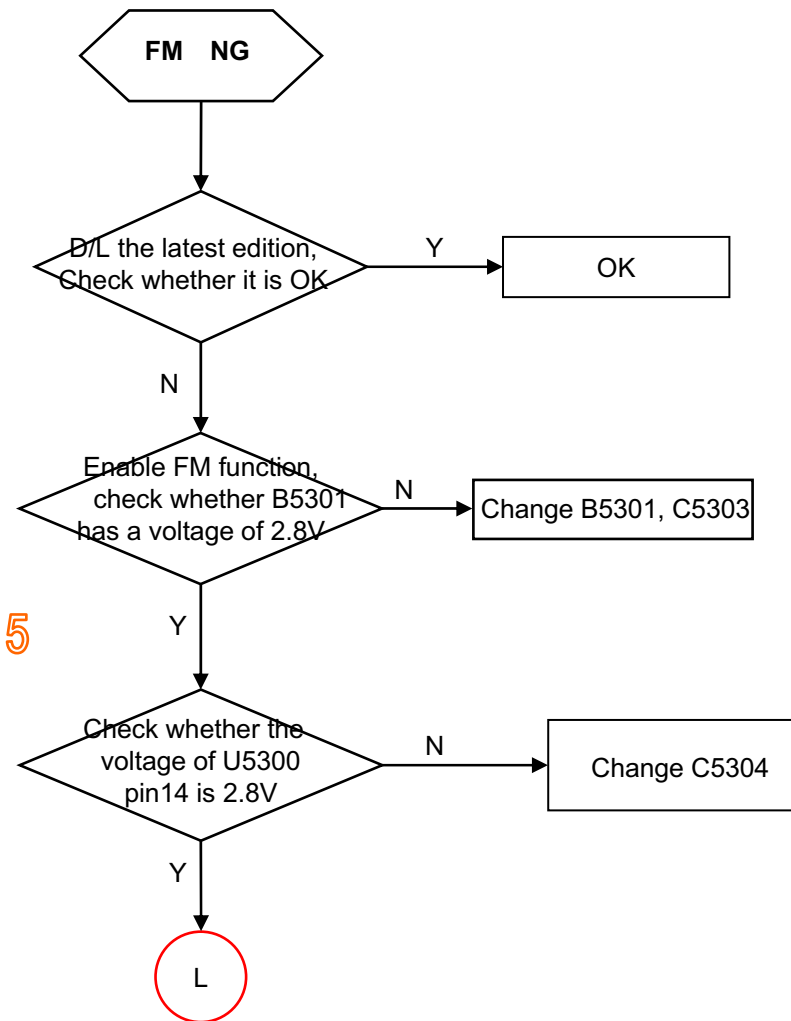


Fig 15

Fig 15
Fig 14

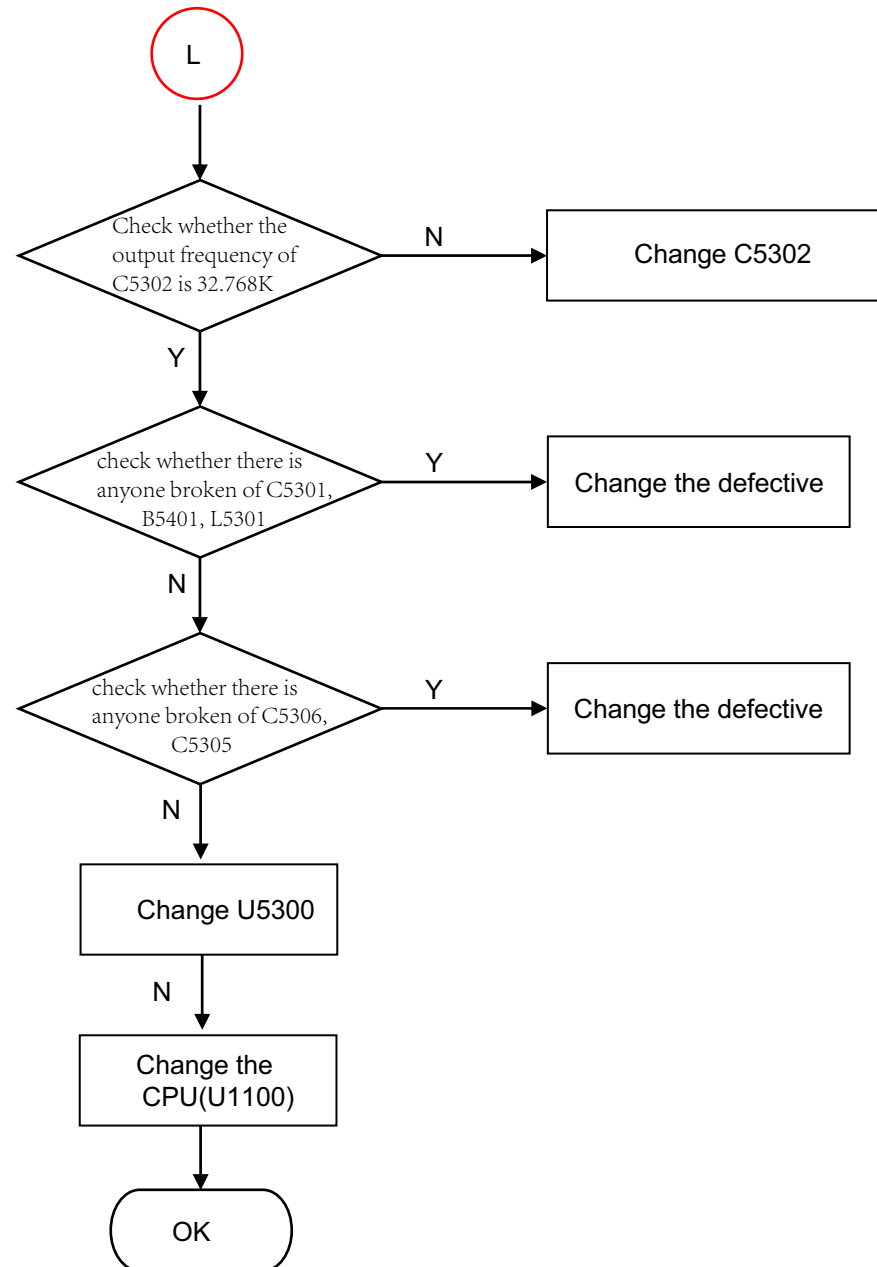
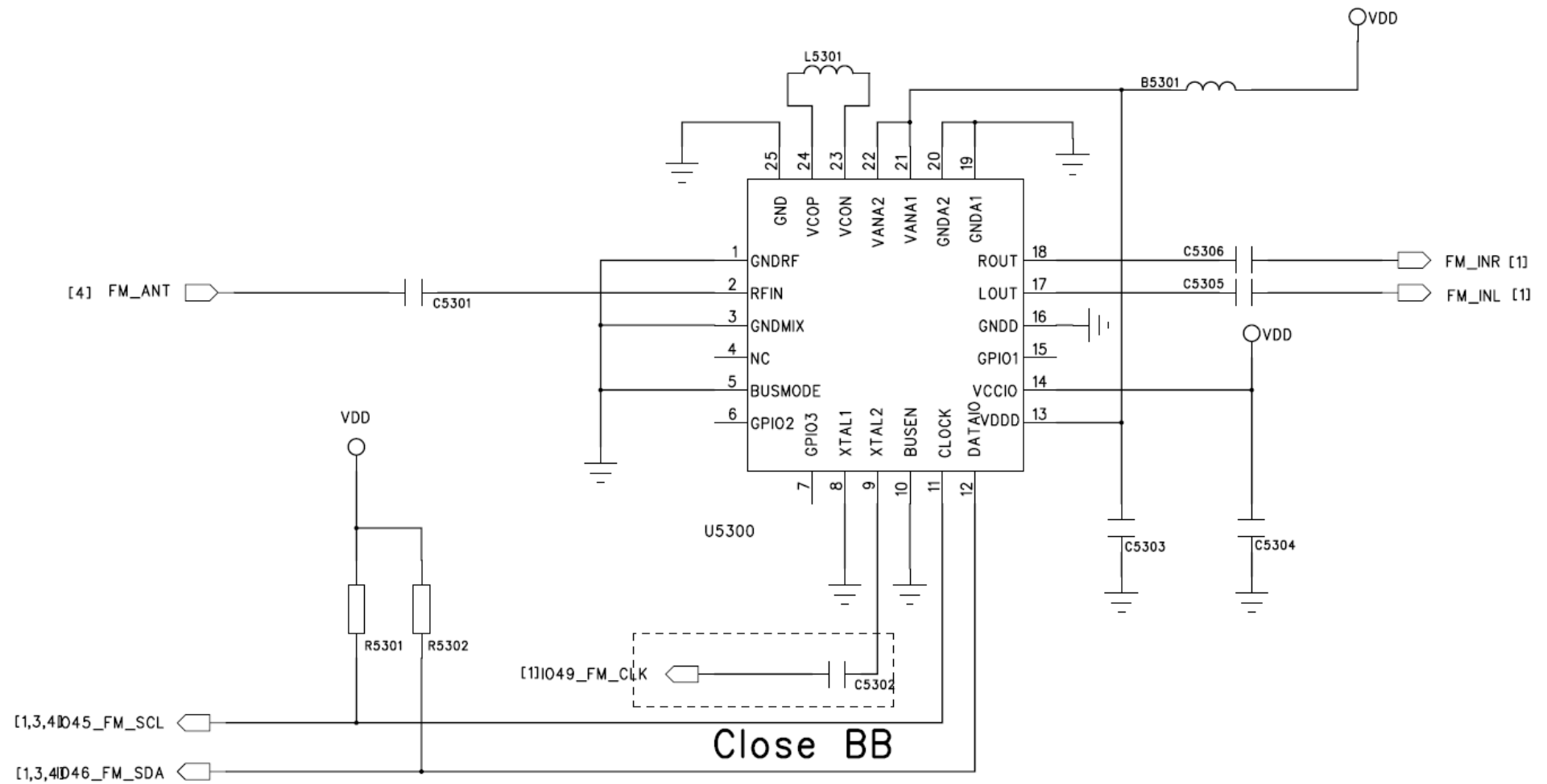


Fig 15



➤ Touch Lens NG

Fig 16

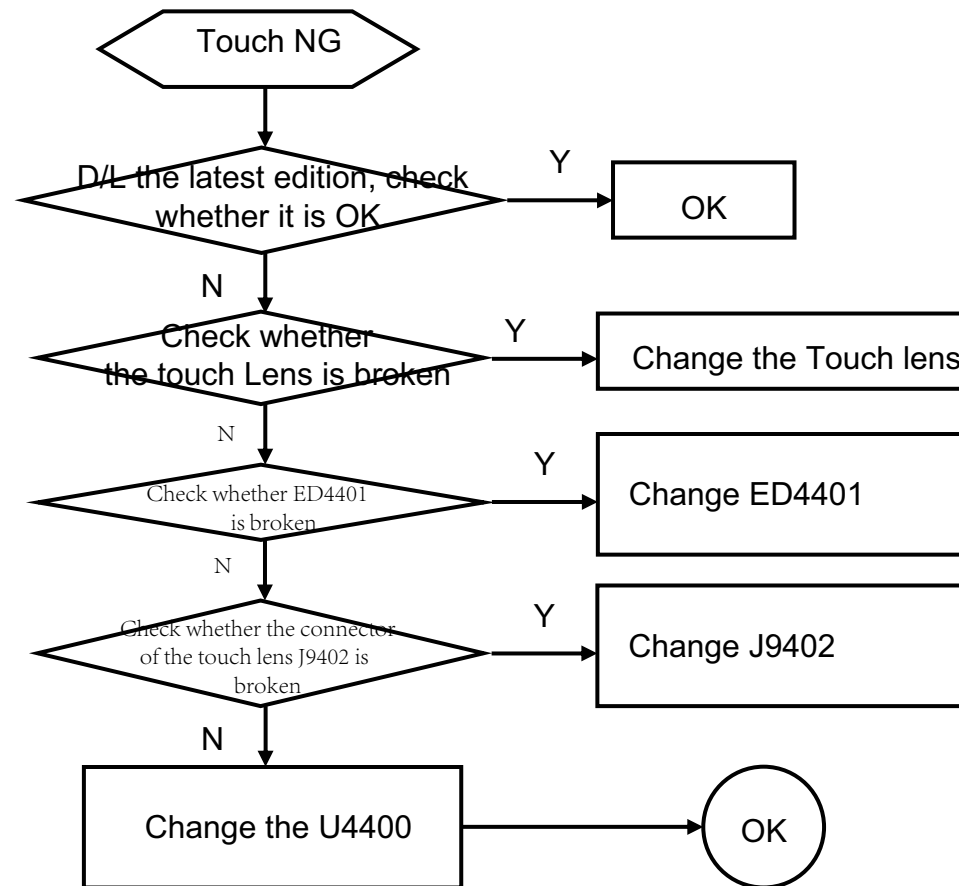


Fig 16

