

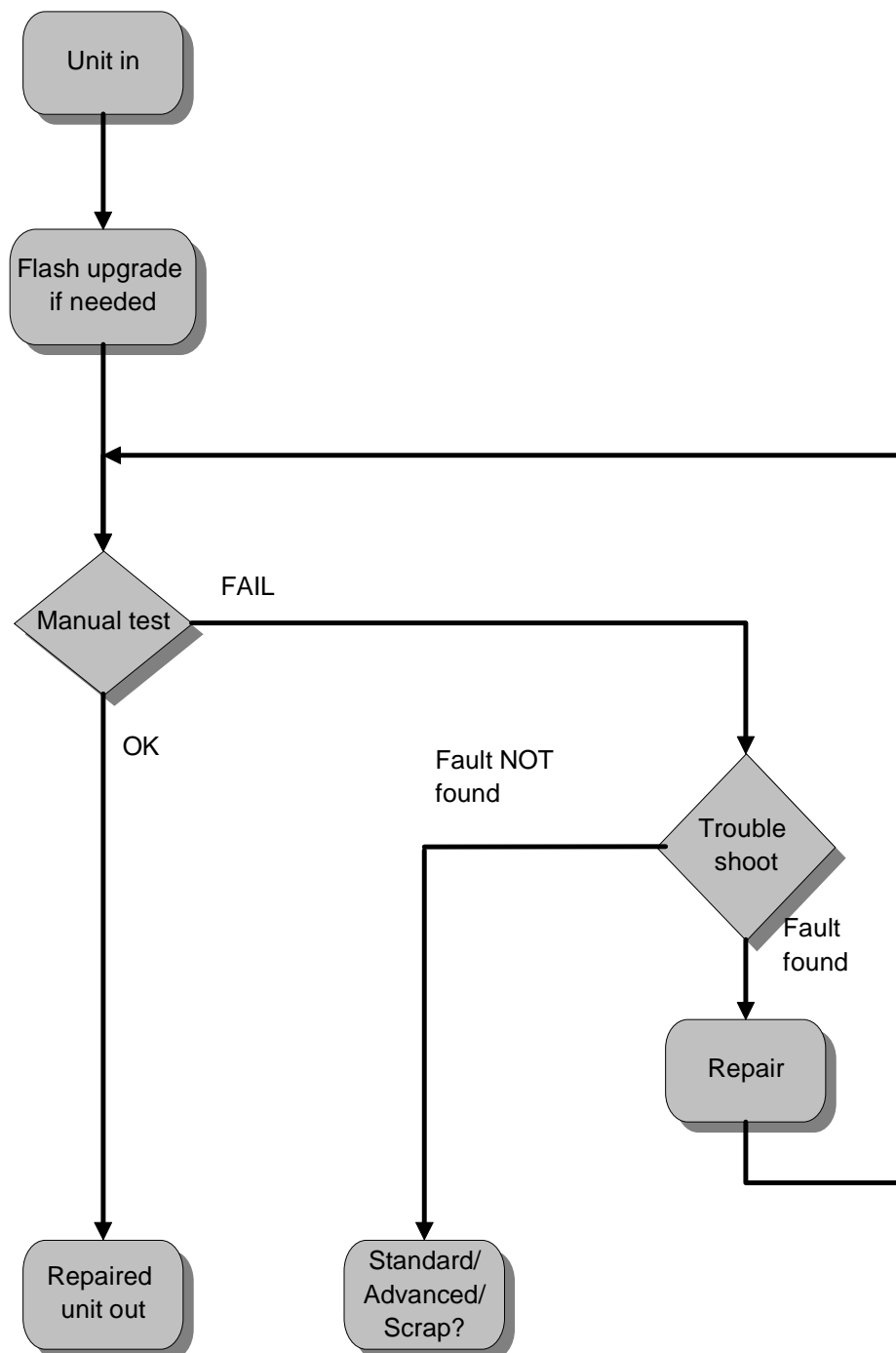
Process Flow, Mechanical

Applicable for T39m and T39mc

Contents

1	Process Flow	2
1.1	Process Flow Description	3
2	Revision History	3

1 Process Flow



1.1 Process Flow Description

Box	Reference
Flash upgrade (if needed)	<i>Test Instruction, Mechanical.</i> - If necessary, update the phone with the latest software revision.
Manual test	<i>Test Instruction, Mechanical.</i> - To verify the phone, all test actions must be performed.
Trouble shoot	<i>Trouble Shooting Guide, Mechanical.</i> – Trouble-shoot the phone according to the guide for the most common faults.
Repair	<i>Working Instruction, Mechanical.</i> - Repair the faulty phone according to the instruction.

2 Revision History

Rev.	Date	Changes / Comments
A	2001-05-22	First release