

SCAS-MA7-SMAF

Installation Manual

Ver.1.0.0

2006/10/30

Yamaha Corporation

Copyright to this document is the property of Yamaha Corporation.

Transfer or copying of this document in part or in whole requires the permission of Yamaha Corporation.

The contents of this document are subject to change without notice.



Copyright© 2006 Yamaha Corporation

INDEX

INDEX.....	2
Revision History	2
1 Introduction	3
2 Installation of SCAS-MA7-SMAF	4
2.1 Installation Procedure.....	4

Revision History

Ver	Date	Description
1.0.0	2006/10/30	Newly released.

1 Introduction

This document describes the method to install SCAS-MA7-SMAF based on the operations on Windows XP.

Install SCAS-MA7-SMAF according to the procedure described in “2 Installation of SCAS-MA7-SMAF”.

2 Installation of SCAS-MA7-SMAF

This section explains about installation method of SCAS-MA7-SMAF.

2.1 Installation Procedure

1. Execute “Setup.Exe” file in “Exe” folder.

(If the file has been downloaded from the download site, extract the file first to use.)

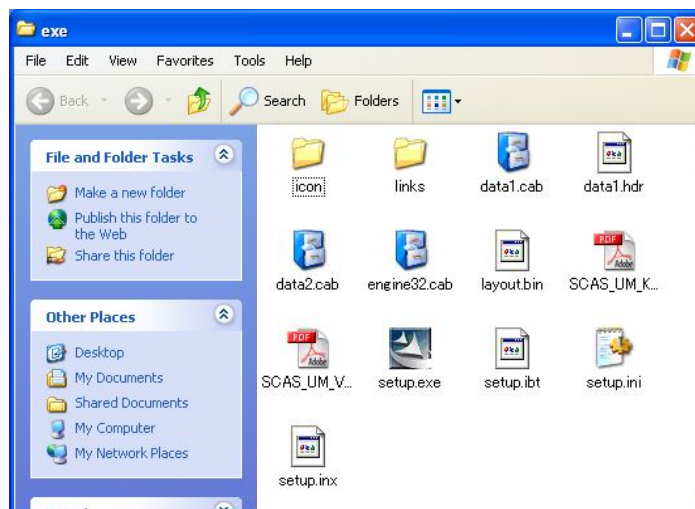


Table 2-1 Exe folder

[NOTE]

If the message below has been shown after executing “Setup.exe”, SCAS-MA7-SMAF version 7.0.0 or earlier might be installed. Please uninstall the older SCAS-MA7-SMAF, and perform the procedure.

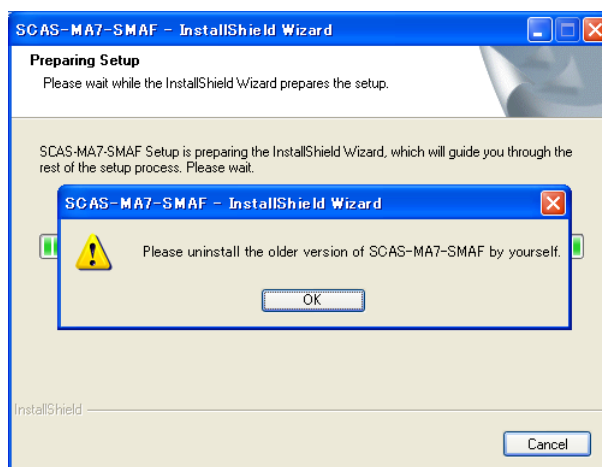


Table 2-2 Message

2. SCAS-MA7-SMAF InstallShield Wizard starts.

Click [Next >] to go to the next procedure.

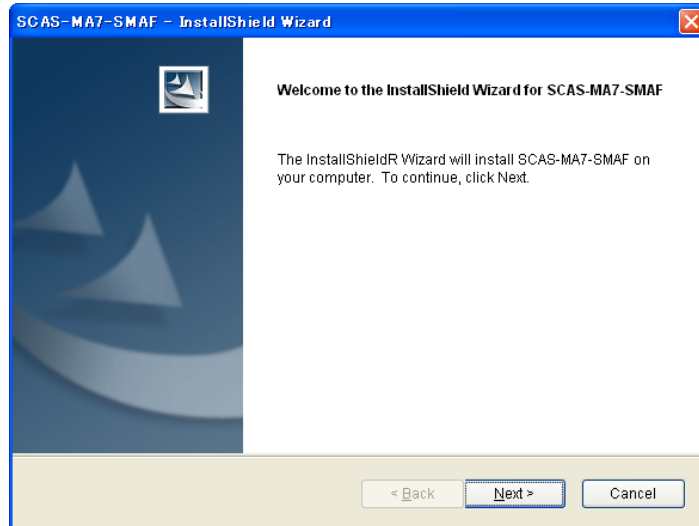


Table 2-3 InstallShield Wizard

[NOTE]

If the message below has been shown after clicking [Next >], there might not be user's manual (*.pdf) in the same directory of setup.exe. If the user's manual (*.pdf) exists, the downloaded zip file from the download site might not be extracted. Please extract the file first to use.

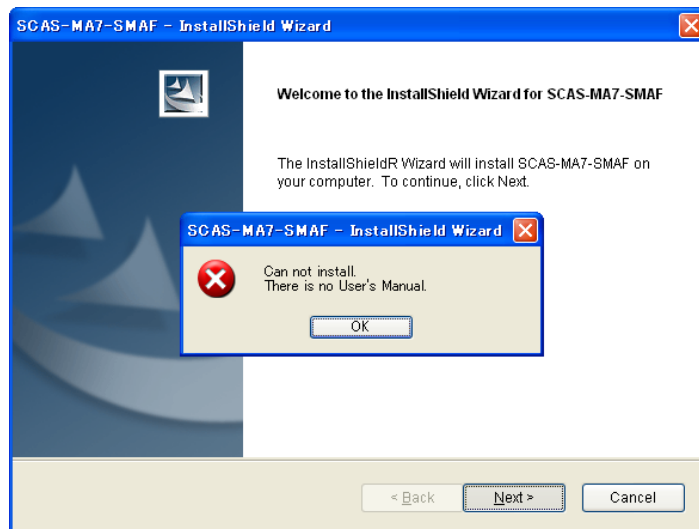


Table 2-4 Error Message

3. Select a folder to install the software.

Click the check box in the list to designate installation features.

Click [Browse...] button, and then designate an installation folder.

Clicking [Disk Cost...] button makes the status check of each drive possible.

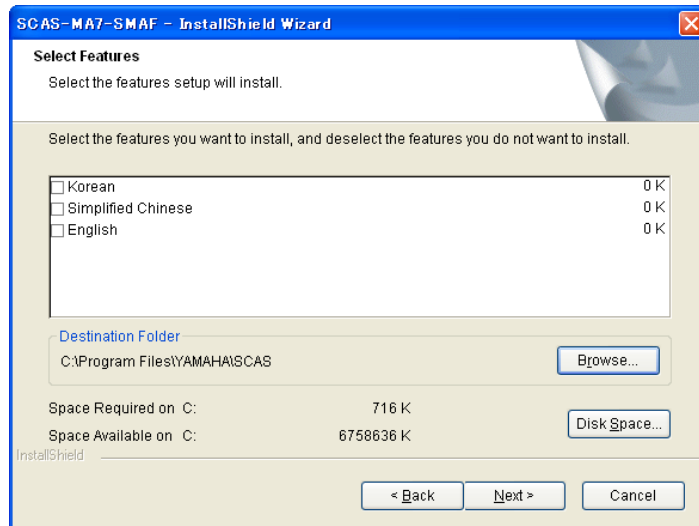


Table 2-5 Selection of features and an installation folder

[NOTE]

If the message below has been shown after clicking [Next >], there might be no feature selected for installation. Please check if any of the boxes are ticked.

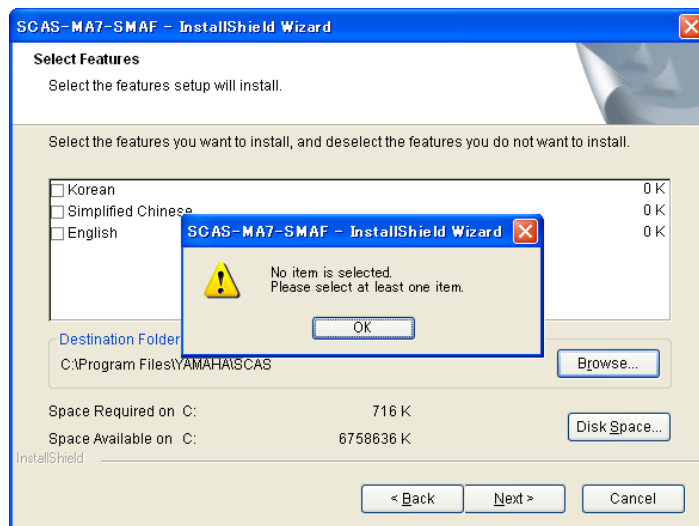


Table 2-6 Error Message

4. This window is for the confirmation of the installation.

Select [Install] to start the installation.

If the settings need changing, click [< Back] to go back to the step 3.

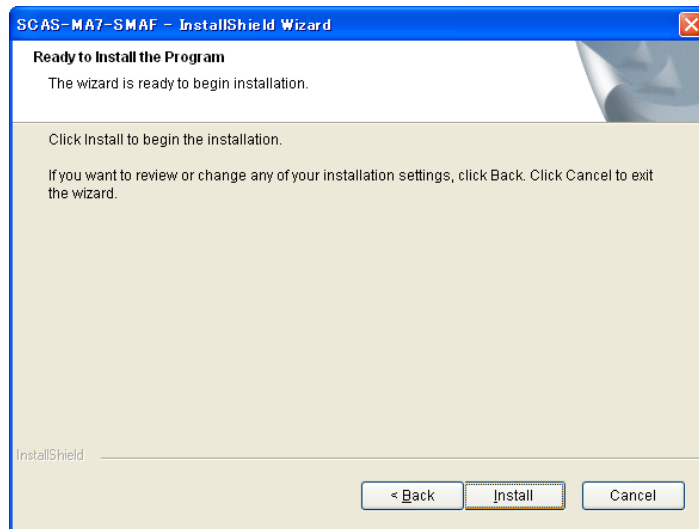


Table 2-7 Installation Confirmation

5. The following window is for the completion of the installation.

Click [Finish] to finish the installation.

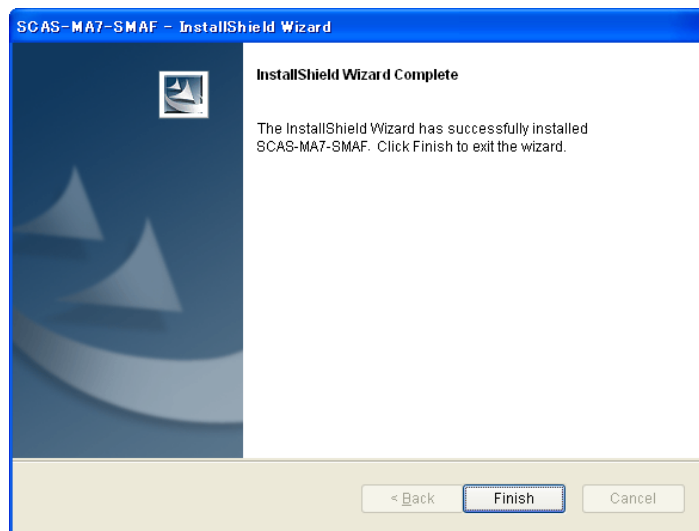


Table 2-8 Completion of SCAS-MA7-SMAF installation