	CHMC PST(Lab) Install Guide		

# CHMC PST(Lab) Install Guide





## CHMC PST(Lab) Install Guide


### 1. System Requirements

#### -Minimum requirements

CPU	:	Pentium III or higher processor
RAM	:	256MByte or greater
Operating System	:	Windows 2000 / XP / Vista
Devices	:	Level Translator, Phone, USB data cable
Resolution	:	1024 * 768
Serial Communications	:	RS232 or USB (COM 1-255)

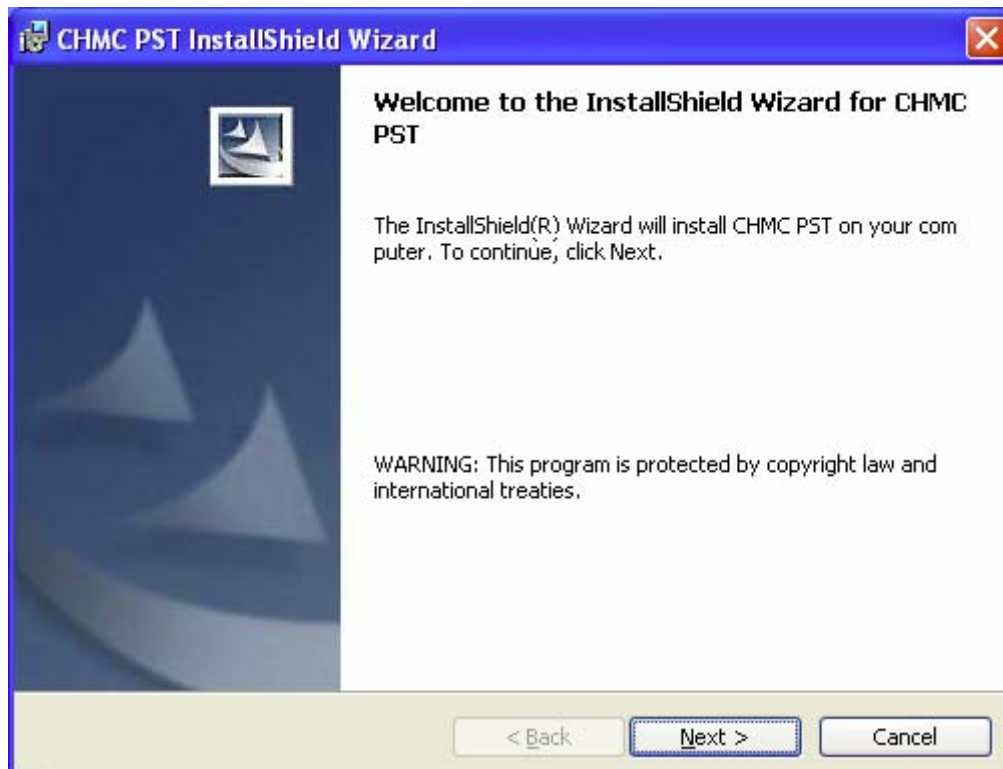
#### -Recommended Requirements


CPU	:	Pentium IV 2GHz or over
RAM	:	512MByte or greater
Operating System	:	Windows XP
Devices	:	Level Translator, Phone, USB data cable
Resolution	:	1024 * 768
Serial Communications	:	RS232 or USB (COM 1-255)

	CHMC PST(Lab) Install Guide		

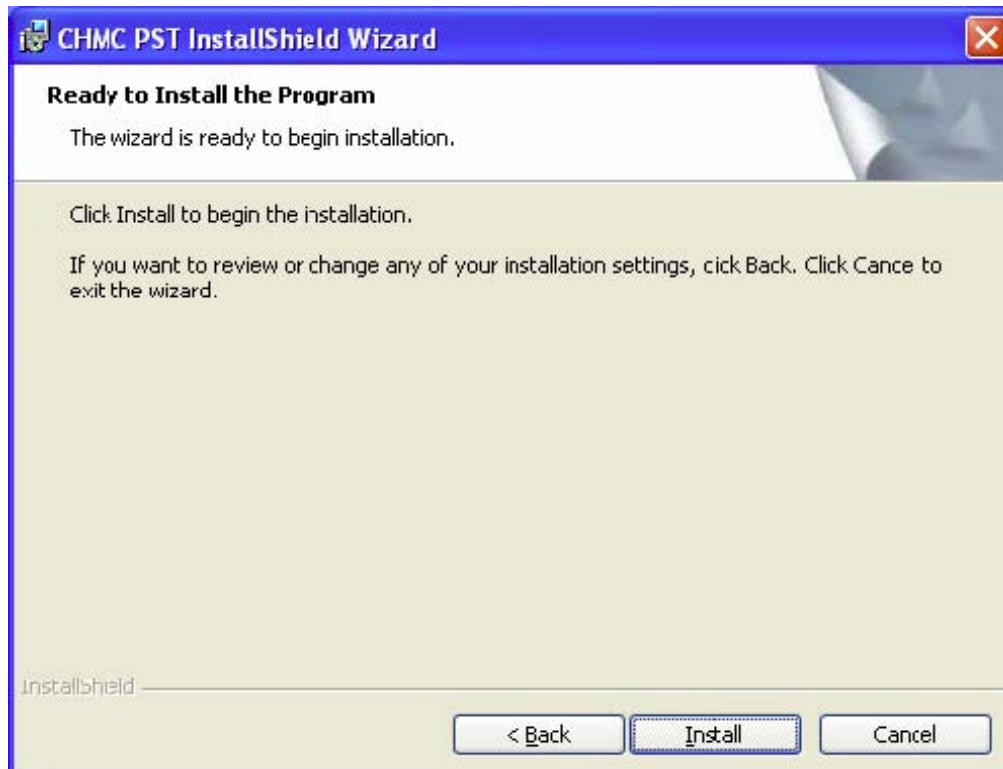
## 2. Install Procedures


(1) Excute Msi file to install CHMC PST.



	CHMC PST(Lab) Install Guide		

(2) Select Install button.




	CHMC PST(Lab) Install Guide		

(3) Select Finish button.



(4) To execute the program, select 'CHMC PST' shortcut in Startup programs.



	CHMC PST(Lab) Install Guide		

### 3. Uninstall Procedures

(1) You can uninstall CHMC PST either using Startup Menu shortcut or ‘Add or Remove Programs’ in Control Panel.

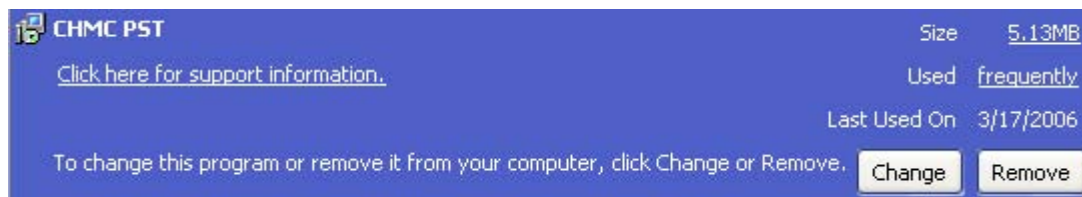
(1-a) Using Startup Menu shortcut

- Select ‘Uninstall CHMC PST’ shortcut.




(1-b) Using ‘Add or Remove Programs’ in Control Panel

- In Control Panel, Execute ‘Add or Remove Programs’.
- Choose CHMC PST and Select Change/Remove button.



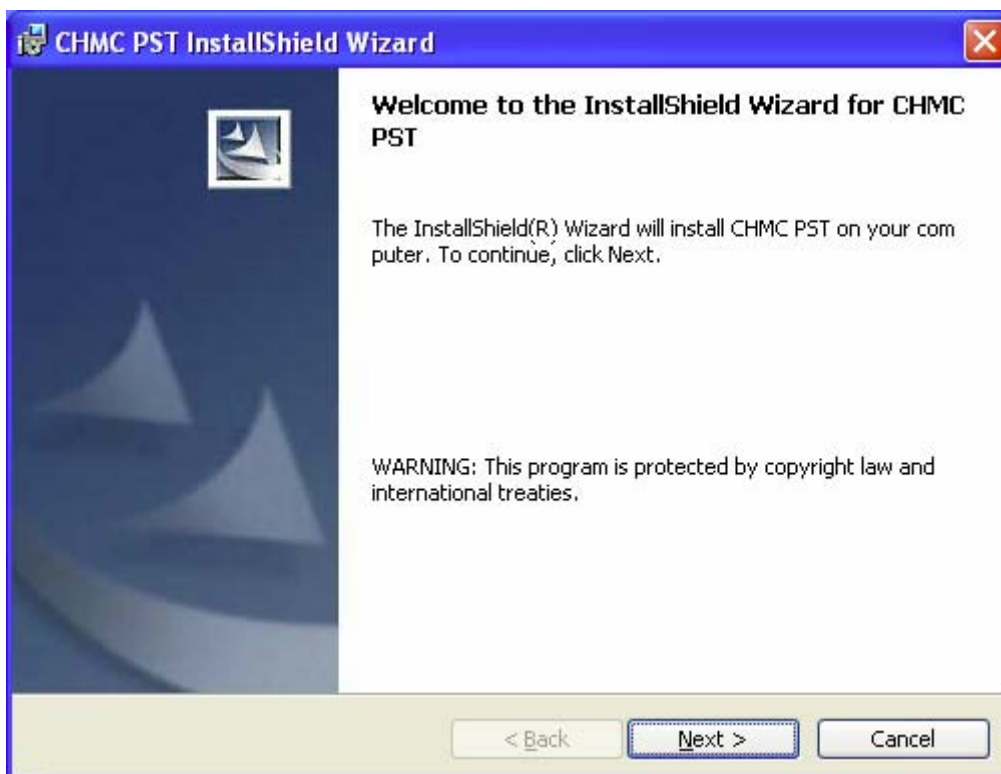
(2) Select Yes button.



	CHMC PST(Lab) Install Guide		

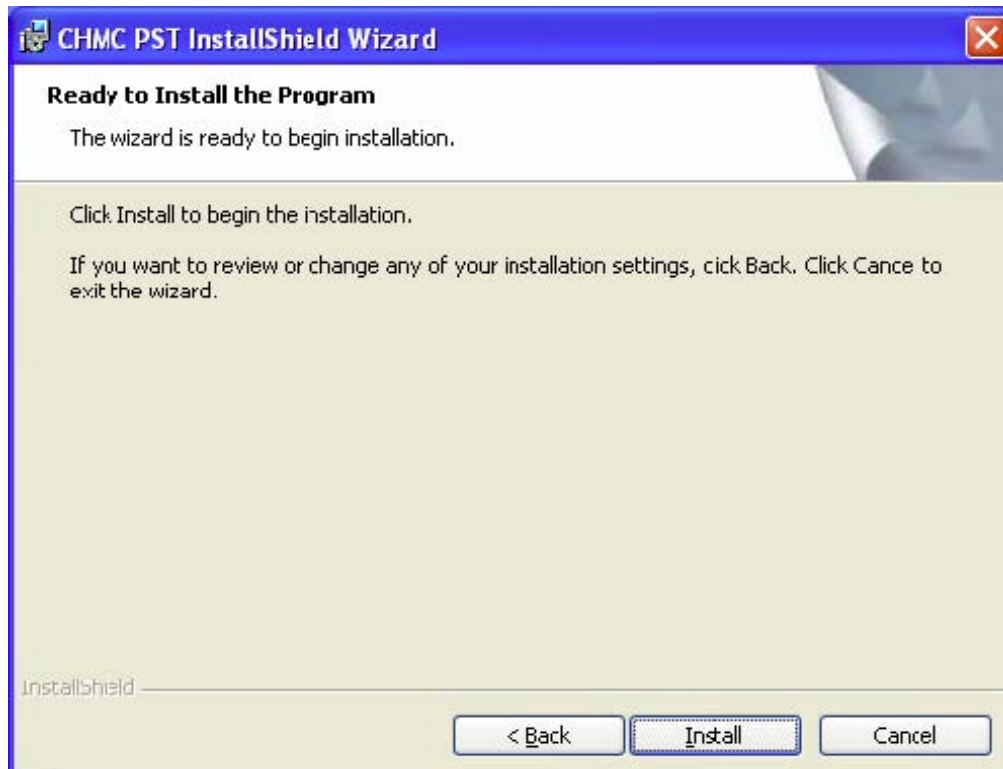
## 4. Upgrade Procedures

(1) You can upgrade CHMC PST by launch upgrade version of .Msi file. Without uninstalling previous version, just execute upgrade version Msi file. Installer will detect current installed version and automatically uninstall the previous and install newer (upgrade) version.






## CHMC PST(Lab) Install Guide




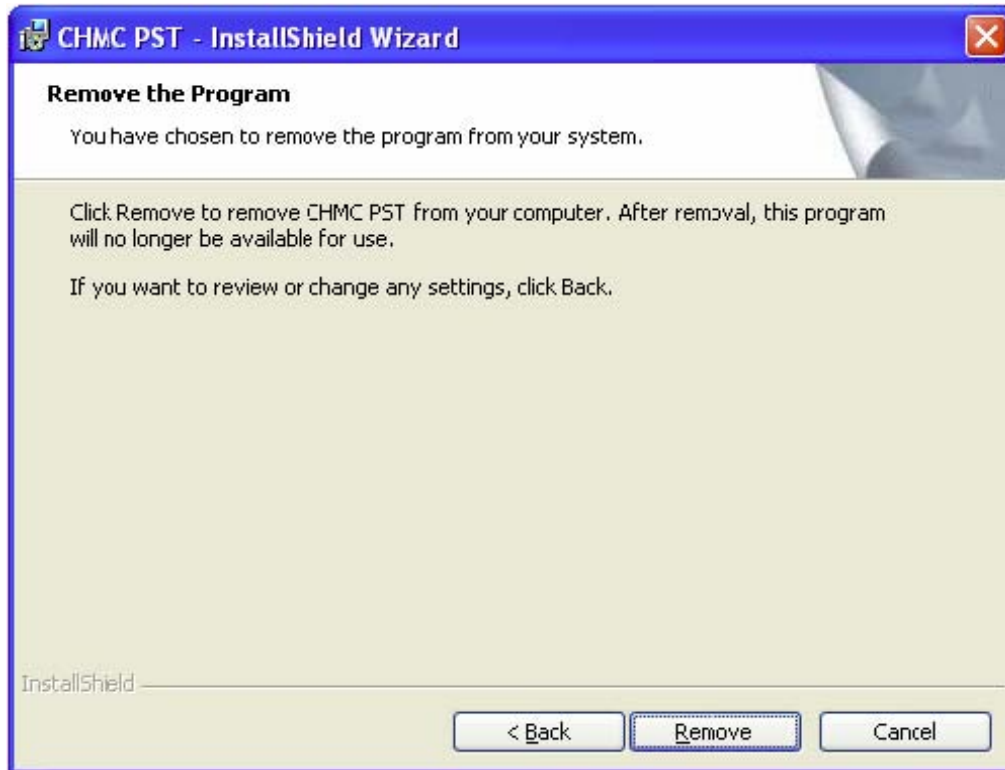


	CHMC PST(Lab) Install Guide		




(2) If the previous version is the same as currently installed one, installer will show the remove procedures of previous version.

	CHMC PST(Lab) Install Guide		



Select Remove button.

	CHMC PST(Lab) Install Guide		

(3) Select Finish button to finish procedures.

