



CHMC G'zOne C731 DLL Install Guide

CHMC G'zOne C731 DLL Install Guide





CHMC G'zOne C731 DLL Install Guide

1. System Requirements

-Minimum requirements

CPU	:	Pentium III or higher processor
RAM	:	256MByte or greater
Operating System	:	Windows 2000/XP
Devices	:	Level Translator, Phone, USB data cable
Resolution	:	1024 * 768
Serial Communications	:	RS232 or USB (COM 1-255)

- Recommended Requirements

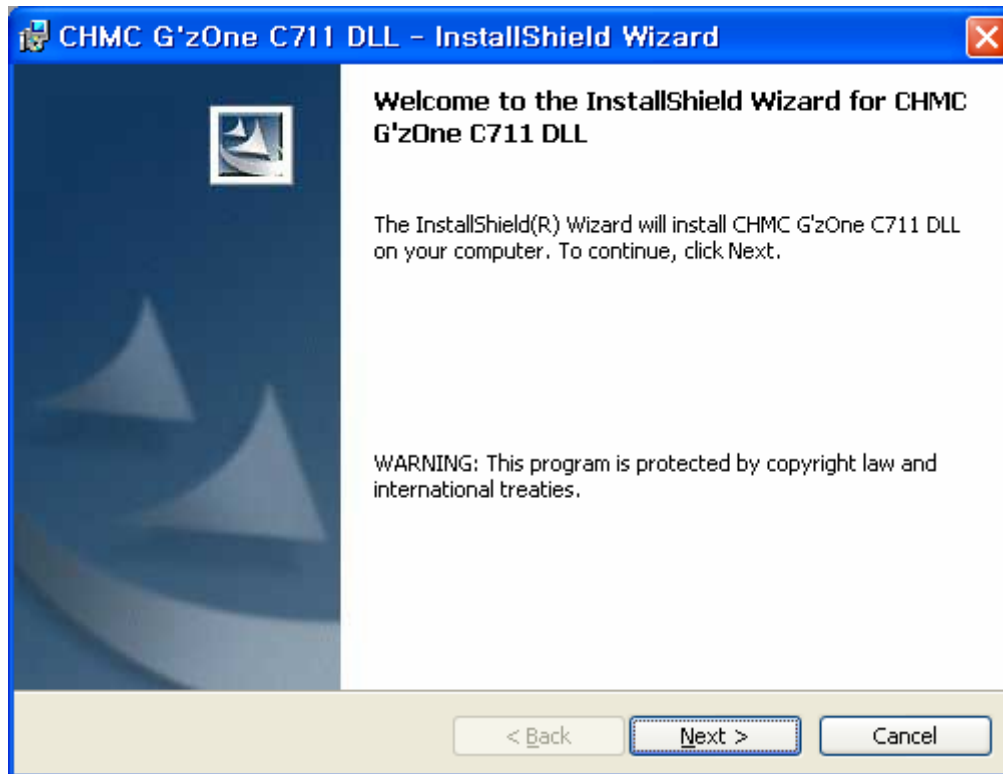
CPU	:	Pentium IV 2Ghz or higher processor
RAM	:	512MByte or greater
Operating System	:	Windows 2000/XP
Devices	:	Level Translator, Phone, USB data cable
Resolution	:	1024 * 768
Serial Communications	:	RS232 or USB (COM 1-255)




CHMC G'zOne C731 DLL Install Guide

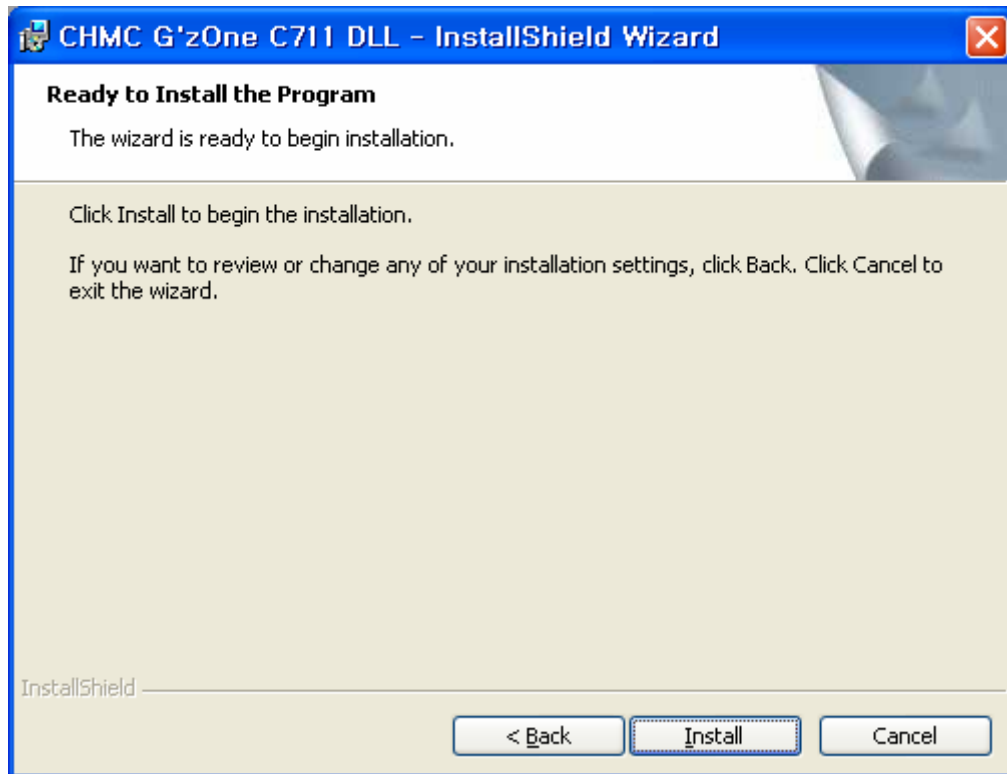
2. Install Procedures


(1) Execute EXE file to install CHMC G'zOne C731 DLL.



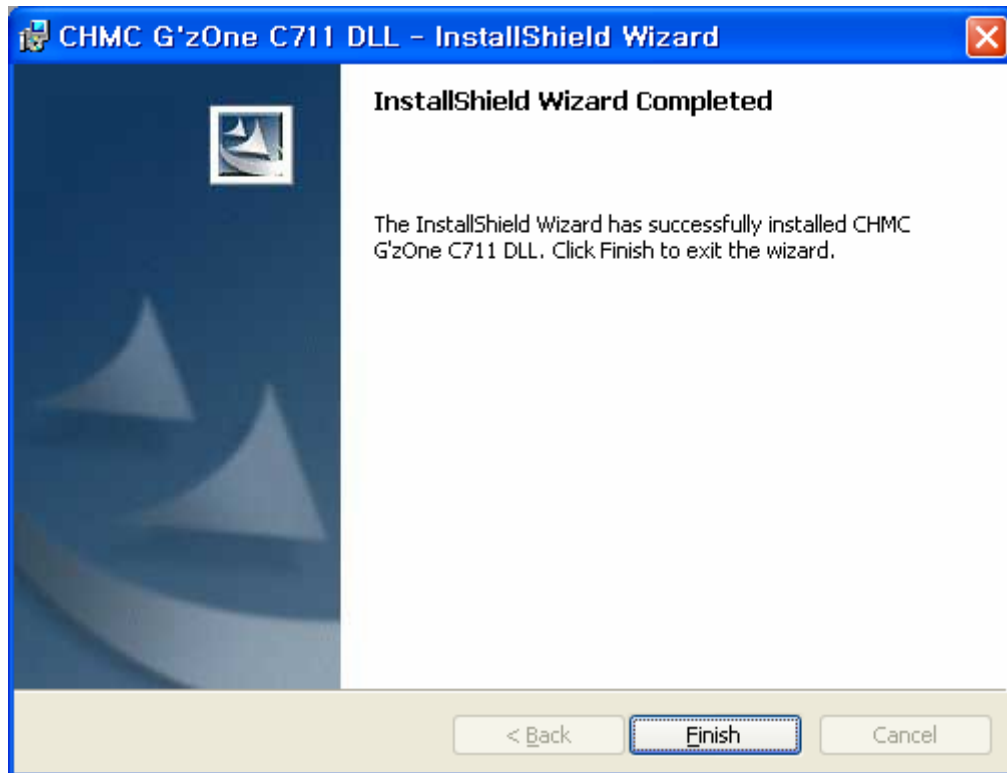
	CHMC G'zOne C7 DLL Install Guide		


(2) Select Install button.



	CHMC G'zOne C731 DLL Install Guide		

(3) Select Finish button.



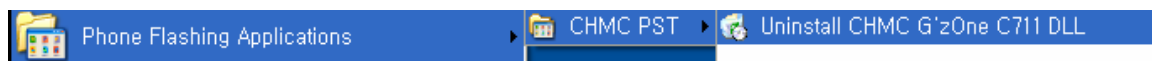
	CHMC G'zOne C731 DLL Install Guide		

3. Uninstall Procedures

(1) You can uninstall CHMC G'zOne C7 31 DLL either using Startup Menu shortcut or 'Add or Remove Programs' in Control Panel.

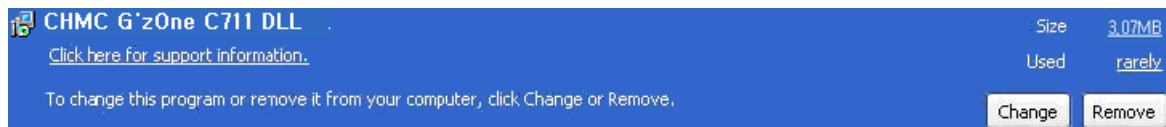
(1-a) Using Startup Menu shortcut

- Select 'Uninstall CHMC G'zOne C731 DLL' shortcut.

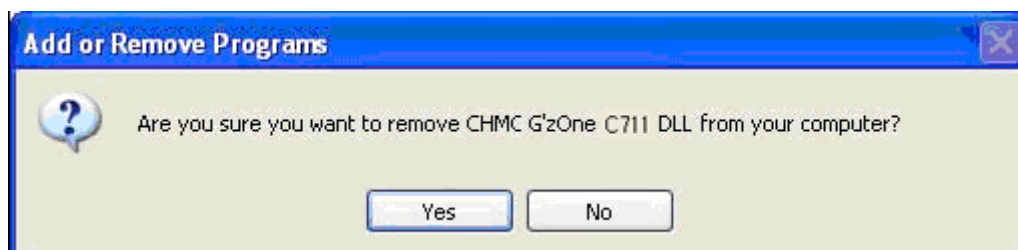



(1-b) Using 'Add or Remove Programs' in Control Panel

- In Control Panel, Execute 'Add or Remove Programs'.
- Choose CHMC G'zOne C731 DLL and Select Change/Remove button.



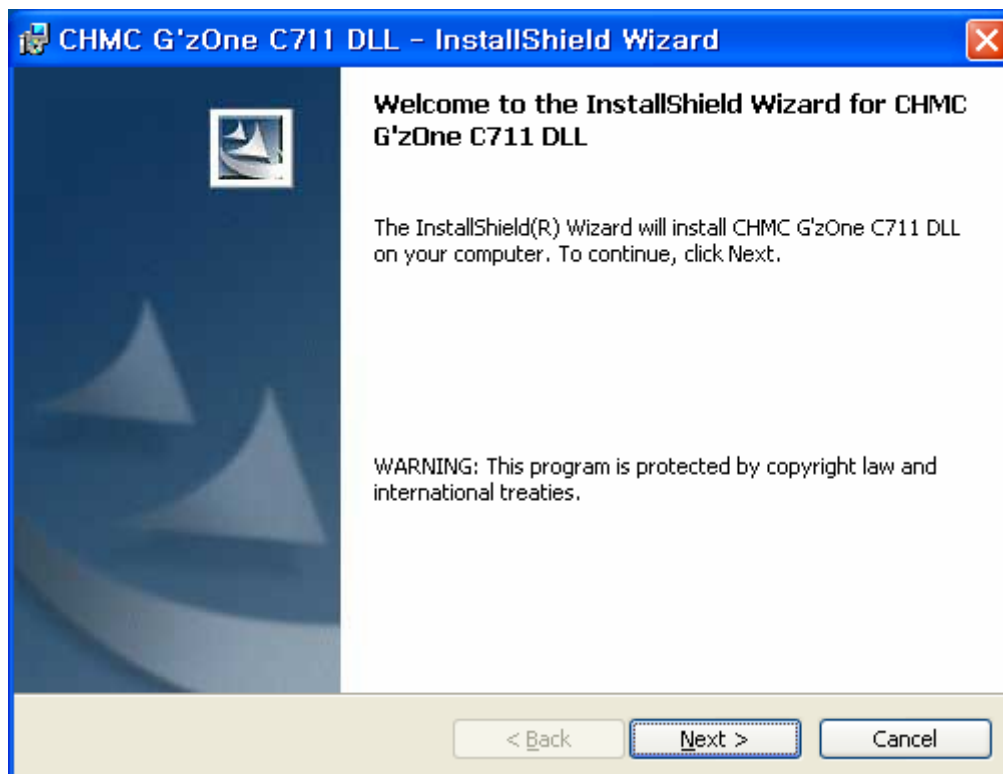
(2) Select Yes button.



	CHMC G'zOne C731 DLL Install Guide		

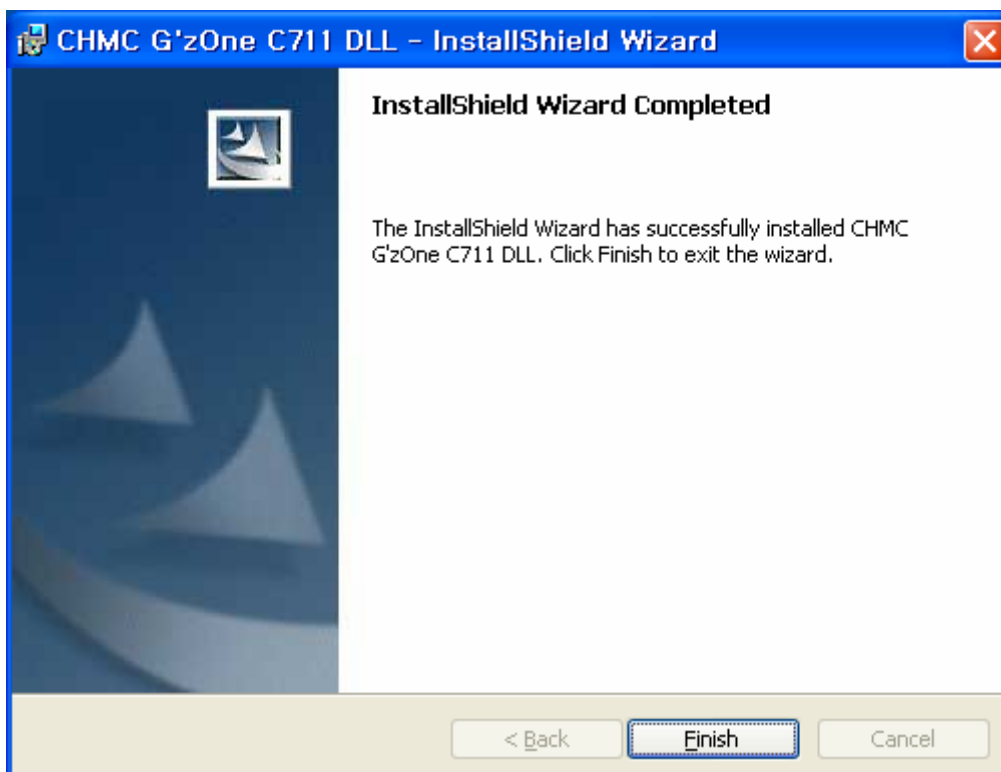
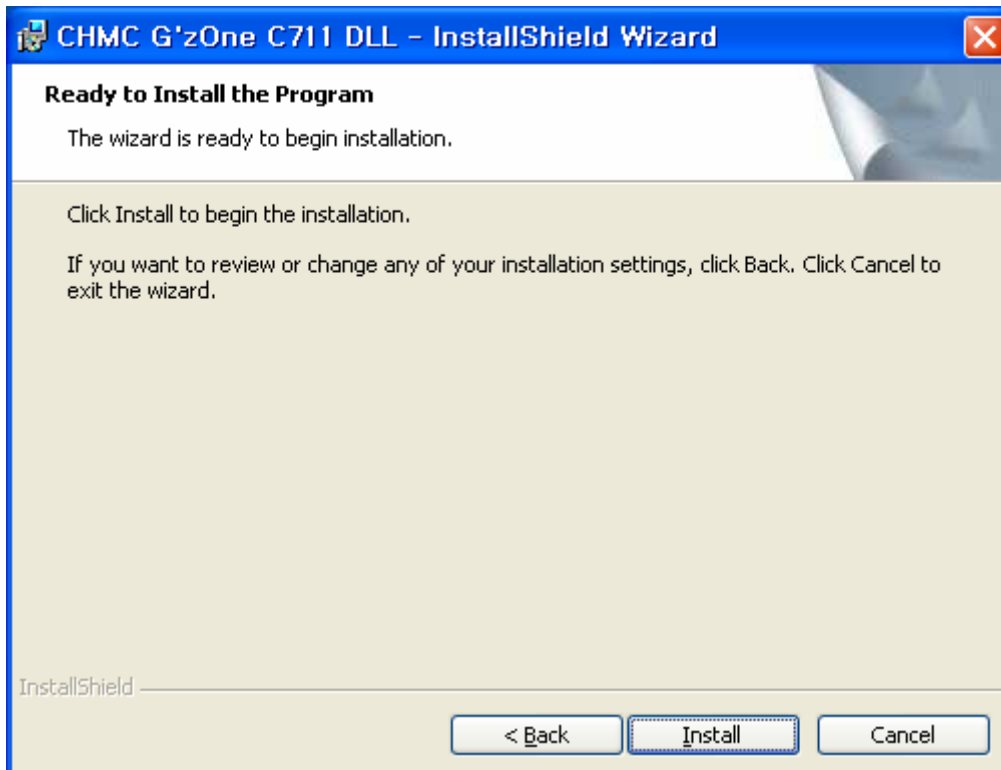
4. Upgrade Procedures


(1) You can upgrade CHMC G'zOne C7 31 DLL by launch upgrade version of .Msi file. Without uninstalling previous version, just execute upgrade version Msi file. Installer will detect current installed version and automatically uninstall the previous and install newer (upgrade) version.



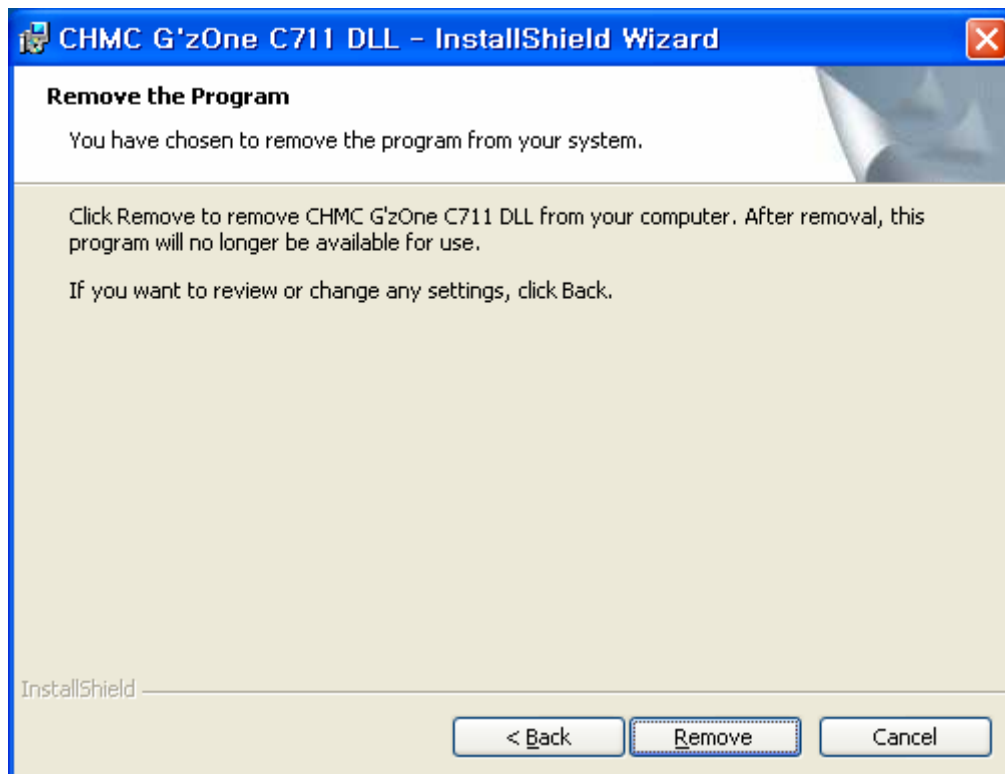


CHMC G'zOne C731 DLL Install Guide




	CHMC G'zOne C7 1 DLL Install Guide		

(2) If the previous version is the same as currently installed one, installer will show the remove procedures of previous version.



Select Remove button.

	CHMC G'zOne C7 1 DLL Install Guide		

(3) Select Finish button to finish procedures.

