

# Cloning Software For SF65



Release	Date	Department	Notes to change
1.0	10.06.2005	COM MD CC GRM T	New document

Table Of Contents
-------------------

1. Presentation .....	3
2. Hardware Requirements .....	3
3. Software Requirements .....	3
4. Installation of the driver for Siemens USB cable.....	3
5. Set-Up of the Cloning Software.....	4
6. Retrieving Process .....	6
7. Download Process.....	8
8. Error Messages .....	9

## 1. Presentation

The cloning software was developed to allow the user configuration retrieving. In a first time , this software gets the FFS (Flash Files System )section (around 20 Mo, where user data are stored) from a SF65 device and download it in another device.

## 2. Hardware Requirements

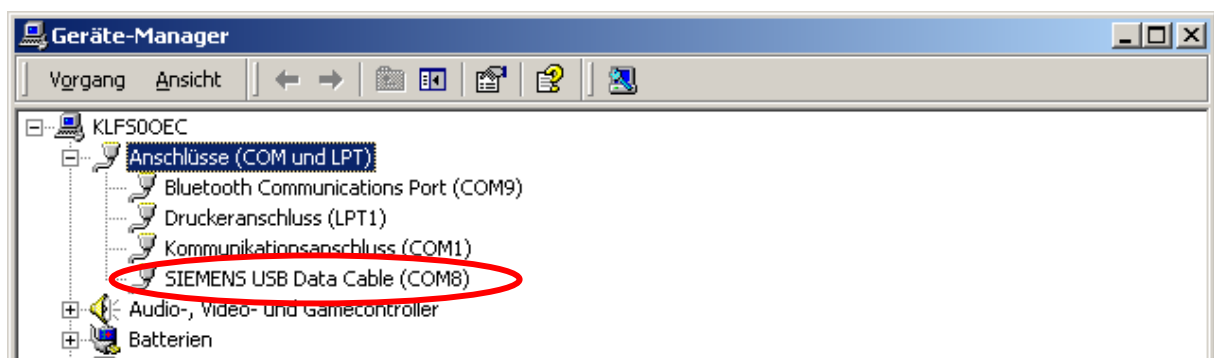
- Data Cable USB DCA-510 ( Serial – USB) L36880-N5601-A111
- PC with at least Pentium III, 800 MHz

## 3. Software Requirements

- Driver for Siemens USB Data Cable DCA-510
- Cloning Software 1.1
- CVI Run time engine 6.0
- Compatibility : Win98,2K,NT,XP

## 4. Installation of the driver for Siemens USB cable

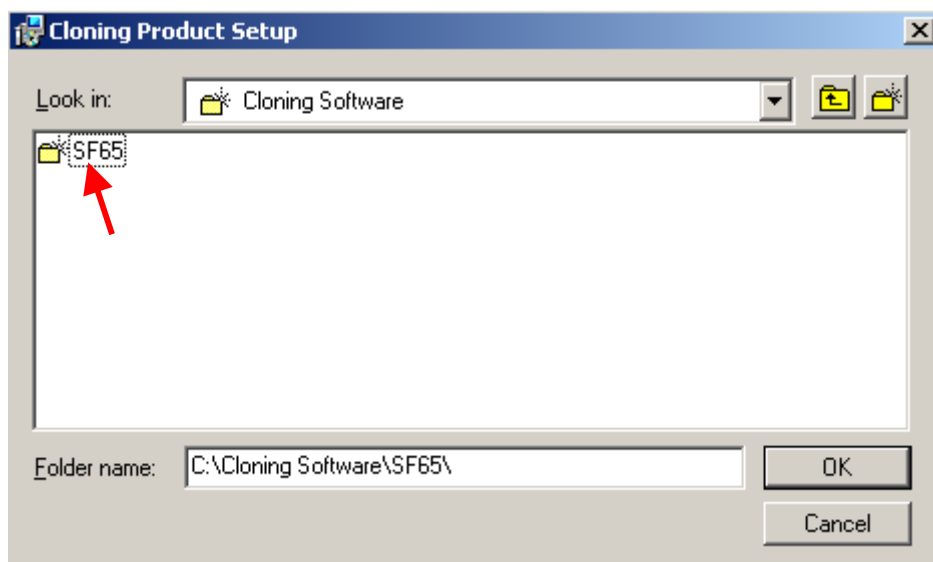
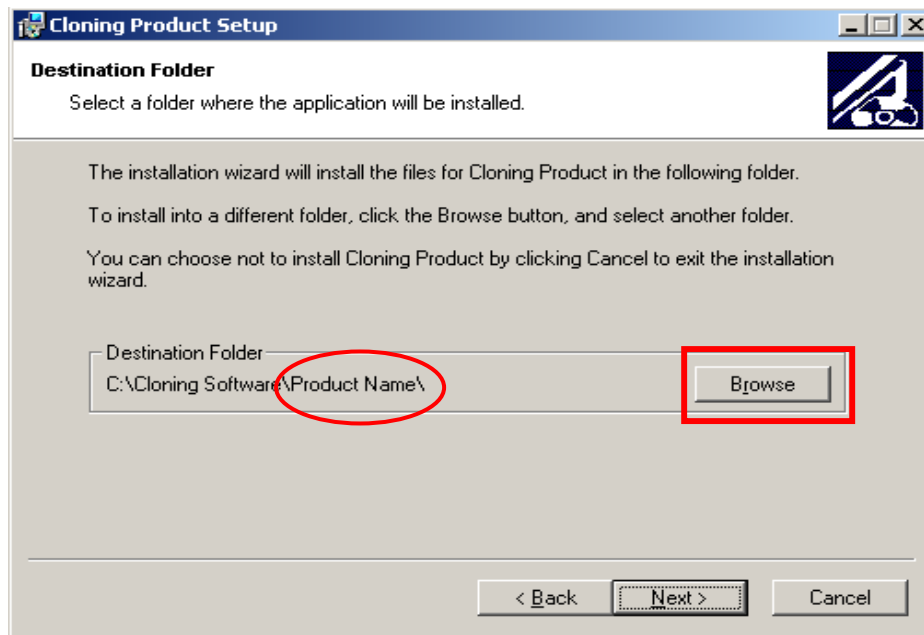
Run the USB-Port Driver installation (Use CD delivered together with the cable)  
After a successful installation check the number of the COM Port (see picture below)



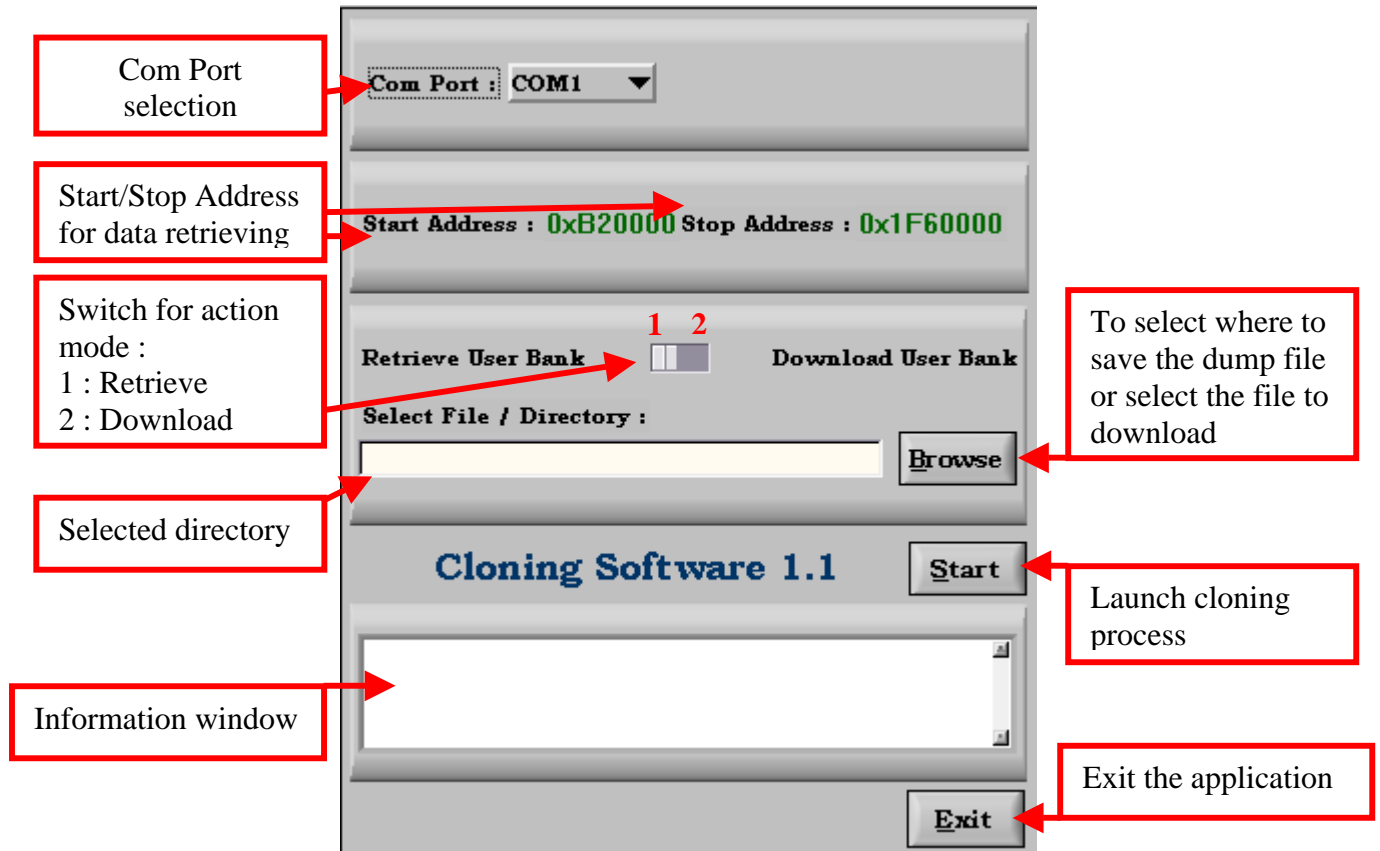
## 5. Set-Up of the Cloning Software

Run the **Setup.exe** file from the installation pack, change the destination path like the following :


e.g. : From C:\Cloning Software\**Product Name** to C:\Cloning Software\**SF65**

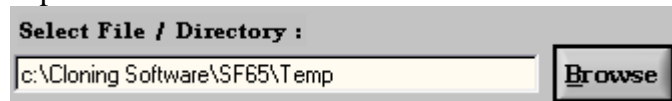



- In case of successful modification , the following panel will appear ( with Start /Stop Address, respectively set to 0xB20000 and 0x1F60000 )

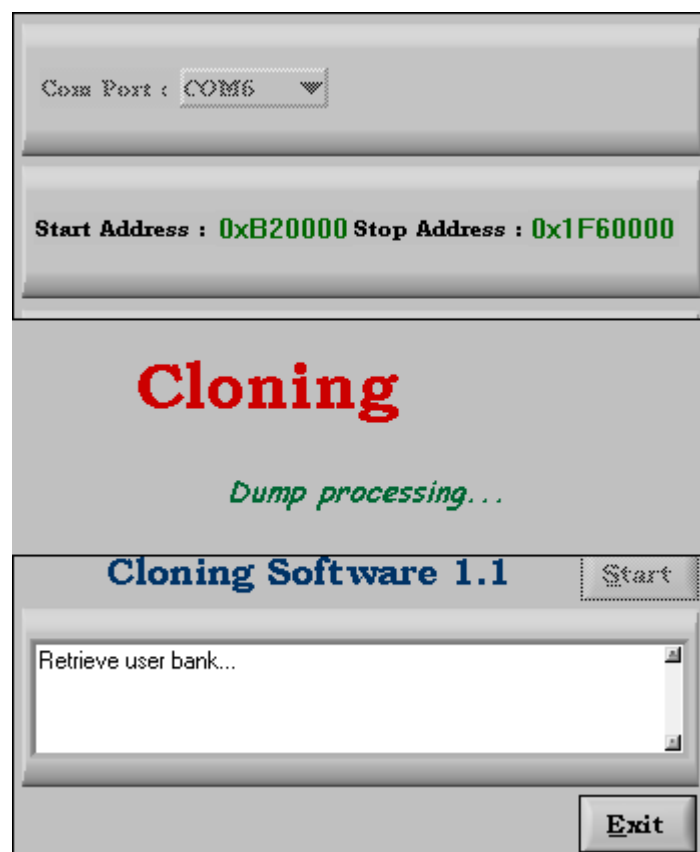


## 6. Retrieving Process

- Before launching the retrieving process, be sure that you have selected the right com port, and set a folder where the dump file will be created ( dump file is the file which contain the copied customer data
- To create this folder , click the  button and set a folder , name it “Temp” for example:



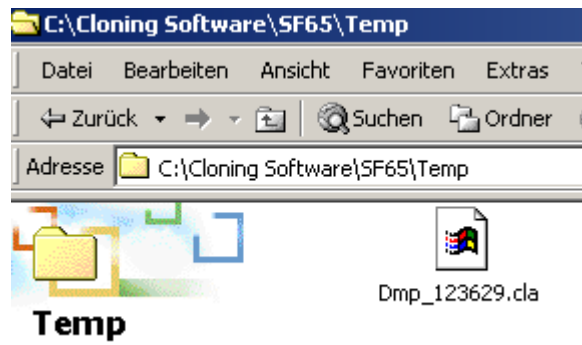
- Ensure that the **battery is fully charged** , the **phone is switched off**.
- Launch the retrieving process by clicking the  button and plug the Siemens USB cable into the phone.
- The application will boot the product automatically, no further actions are required from the user.
- If the configuration is OK, the retrieving process will immediately start.....



- After a few minutes ( around 10 mn) the application gets the FFS part. When finished, the application comes back to the main screen and display “**User bank retrieved**” in the information area.....

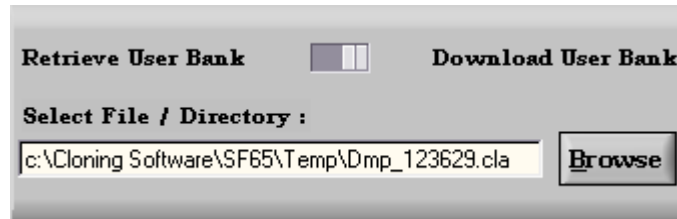


- The file where the customer data are saved , is automatically called : **Dmp\_hhmmss.cla** (h=hour, m=minute, s=second).
- Retrieving several data without over-writing old ones is possible (renaming these files is possible too )

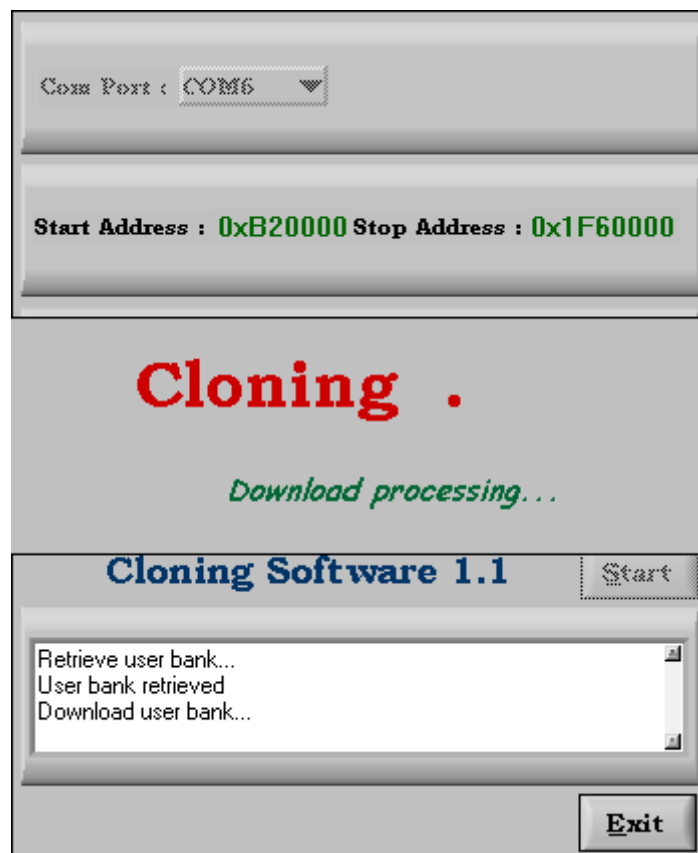


## 7. Download Process

Do the same as the retrieving process. But select “Download User Bank” instead “Retrieve User Bank” and select the file to download ( via Browse button).....

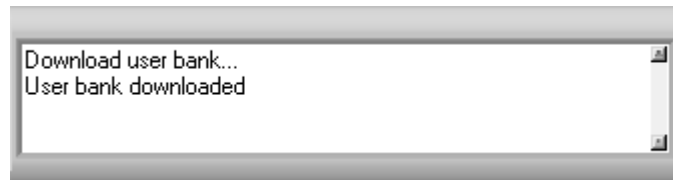


- Ensure that the **battery is fully charged** , the **phone is switched off**.
- Launch the retrieving process by clicking the **Start** button and plug the Siemens USB cable into the phone.
- The application will boot the product automatically, no further actions are required from the user.
- If the configuration is OK, the download process will immediately start.....



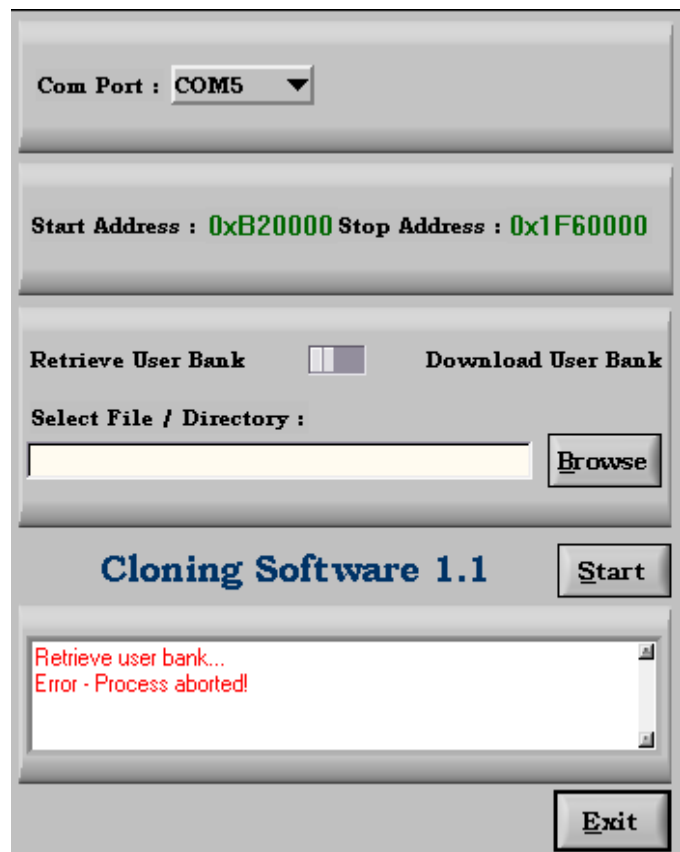
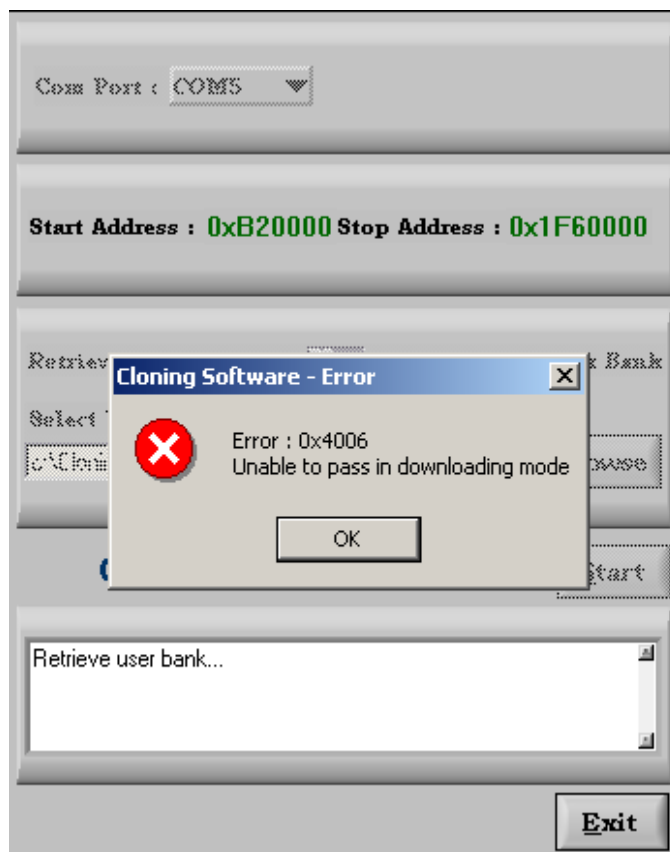


- After a few minutes ( around 10 mn) the application copy the FFS part. When finished, the application comes back to the main screen and display “**User bank downloaded**” in the information area...



## 8. Error Messages

If a problem occurs during the process, a message like this one below will appear :



Therefore, you need to start another process....