



ELF Instructions

NaNO_SeriES Monster Pack

[by ritza_II just newbieholiC]
Sorry for my bad english

Thanks to all Elf developer on motofan or motoedy ☺

Here just little guide to use ELF Application in your Moto
Begini kira2 cara make ELF di hp kita

Lets Start!!! ☺
Ayo kita mulai

1. Tunes ELF 4.0

Elf Music player by om2804, it's faster than iTunes and have beautiful animated skin

You can hide in the background (play music+run Java Application)

- ✓ Press headsetkey to pause/resume, hold to go to next track
- ✓ Also hold volume key to go to next song
- ✓ You can change to your favorit skin
- ✓ Press green key to send music file via bluetooth in now playing screen
- ✓ Use fbrowser to send file via bluetooth
- ✓ Enjoy rhytem light by pressing keypad number 1,2,3 to on/off (4,5,6 to off in v3.5)
- ✓ *=volume down, #=volume up
- ✓ Joy stick up= pause, down=stop, right/left= next or previous, hold for backward/forward
- ✓ 0/smart key= mute
- ✓ Browse your playlist by pressing joystick center key
- ✓ Queue future available, press joystick center on now playing screen, prees menu button for setting
- ✓ "5" button for file info ("8" in v3.5)
- ✓ Name artist n title can be separated as "Artist - Title" in file name
- ✓ Use joystick right or left to switch menu or expand playlists (only v3.5 above)
- ✓ And many other feature, explore it by yourself
- ✓ Pokoknya masih banyak fitur lain, silahkan di explore sendiri,
- ✓ pencet2 aja semua tombol yang mungkin. Hehe...

Run it from, Menu>Multimedia> Musics>eTunes
Or using iTunes button



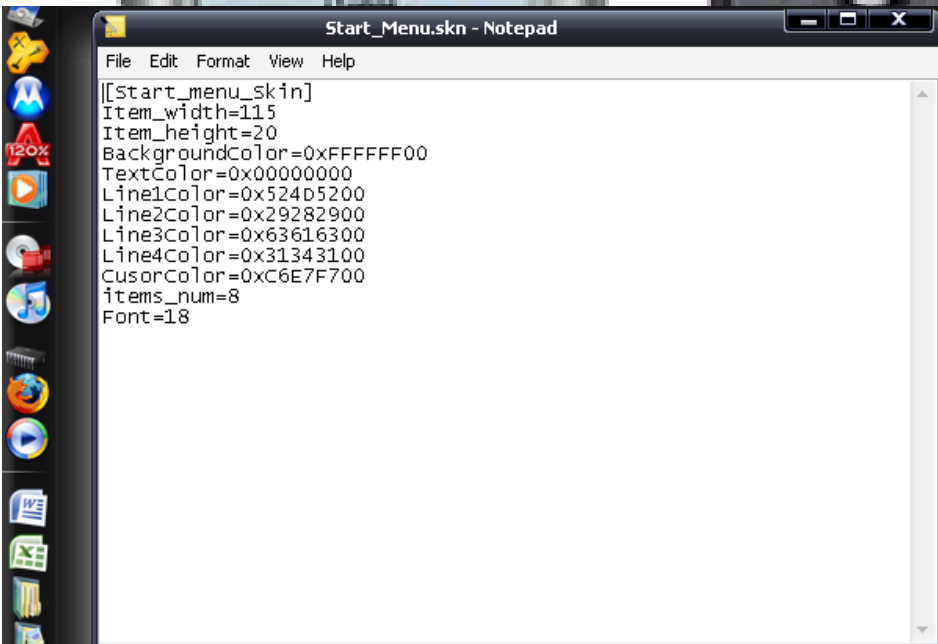
Go to playlist>press menu button> create your playlist (Auto create or manual)
Than enjoy your New Music Experience ☺

2. Start menu

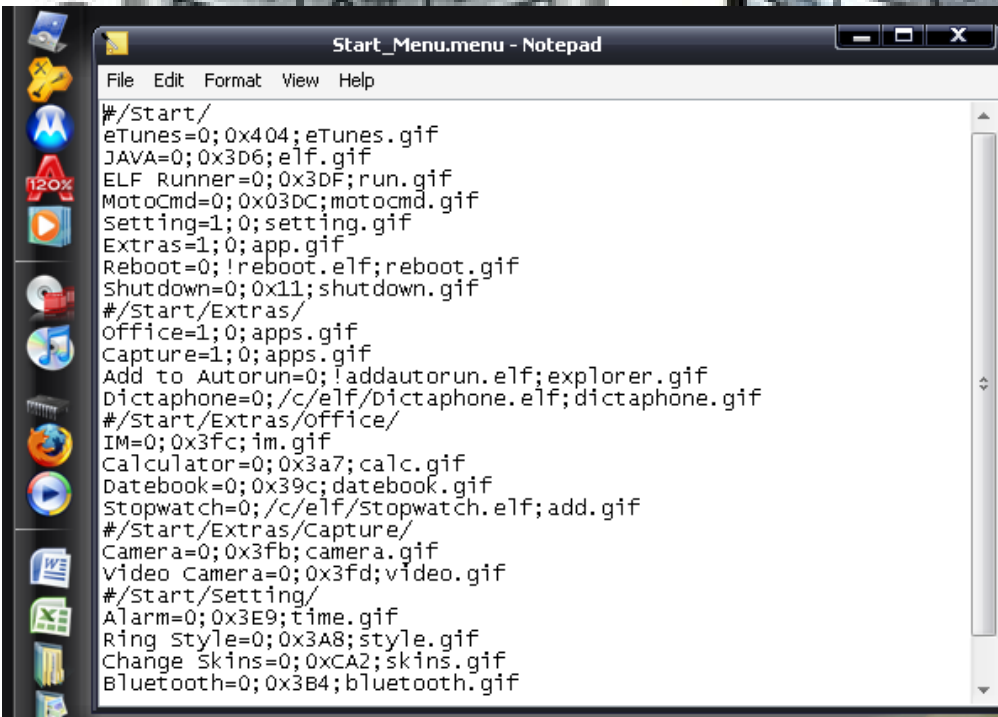
Press Options from home screen or Go to multimedia>Start Menu



Your display configuration save in start menu.skn
Edit via notepad



and menu configuration save in start menu.menu in c:/elf/startmenu/
Edit via notepad



3. LRCPlayer 1.4

ELF by motoedy china, based on Tunes 3.5 and PP_Lyrics 1.6.3. It's same with Tunes 3.5 but it have additional feature to show lyrics. Run it from Elf runner.



When you on now playing screen, hit “7”. So you’ll go to lyrics interface

Disturbed - Parasite.m4a	Disturbed - Parasite.m4a
crime Stepped over the line and You better be running for your life Fucked over again, I even called you a friend, A mistake I won't be repeating I just don't understand,	Don't you pretend that you don't know why, (You fucking parasite) Because your living through association, Has been getting you high! You'd sell your soul, For just a taste of the life!
Back 00:35 Hide	Back 00:56 Hide

You can back to normal interface by press “9”

NOW, you can enjoy music plus reading the Lyrics. It's cool!!

*NOTE: To Make it can show the Lyrics, you need to make your lyrics file (You can see in bonus folder). Named it same with your music file (Case sensitive)

Like this:

Your music file>> Disturbed - Parasite.m4a

So, your Lyrics file should be>> Disturbed - Parasite.lrc

Put your lyrics file in b/mobile/audio/lrc/

How to make Lyrics file???

You can make it with notepad or use Lyrics editor or mini Lyrics. Use google to search the tutorial and the software

BUGS on LRCPLayer: You'll get reboot when switch to Lyrics Interface if your music file doesn't have lyrics file!!! ☹

4. Elf runner

Important Elf application to run Other Elf application from the phone
Now, elf runner in phone work to edit auto.run or elf category lists. Thanks to Macho ☺

Ni ELF buat jalanin Aplikasi ELF yang lain, istilahnya kek start program klo di windows. Sekarang ELF runner dah bisa buat edit auto.run dan juga elf list

Go to Elf Runner from main menu>Tools>Elf Runner
There are some application listed on the category



You can see in the list. Tunes_irc, Gain, Save As, Actdesk etc are the Elf Application that you can run from Elf-Runner. To run it, highlight the name of elf, than hit joystick center (fire)

Nah buat ngerun aplikasinya, tinggal sorot trus pencet joystick tengah

Points button is for editing every element on the ELF list (Tunes_Irc, Stopwatch is called points) you can rename and delete (insert was unwork)

List button menu is for editing your ELF category list, default in this MP are 3 lists (Setting, Tools, and Games. Etc you can edit by your self

Points dan list menu button bisa buat manage Elf runner sesuai selera

To edit auto.run, press menu button when on ELF runner, select auto.run.

To add elf on auto.run Go to all files, choose your file> prees menu button>add to auto.run

Buat edit auto.run tinggal pencet tombol menu trus pilih auto.run lalu delete yang kamu ga suka

Buat nambah elf di auto.run tinggal pilih all files, sorot file yang mau di tambahkan, pencet menu>add to auto.run

Press “4” button or joystick left to go to previous list or “6” button or joystick right to go to next list

Tombol “4” ato joystick kiri buat ke list sebelumnya dan tombol “6” ato joystick kanan buat ke list selanjutnya

Now, let's start to know what the function of each elf application

>Tunes_Lrc

Based on Tunes 2.9.5 and PP_Lyrics 1.5.4. It's older version but stable, no reboot in music without lyric file. Tunes_Lrc will not work after you used Tunes ELF. Tunes_Lrc cannot be used together with LRC player or Tunes in one power on phone. You need restart your phone.

Enjoy Your Music plus Lyric 😊



> Gain.elf

Elf by Last1Left for editing Gain Table Param Table



> extmgr

RUN it to make motocomd plugin work, or you can simply put it in auto run file. But It will consume more battery, I made it separately in elf runner coz I run it just when I need.

> Multyphoto

Program for automatic create series of photo. Press red button to exit.

> Save As

After run it, it will guard all file before receive file via bluetooth or wap. So, if it's working perfectly, it will make our phone capable to receive any type of file. I didn't yet test it.

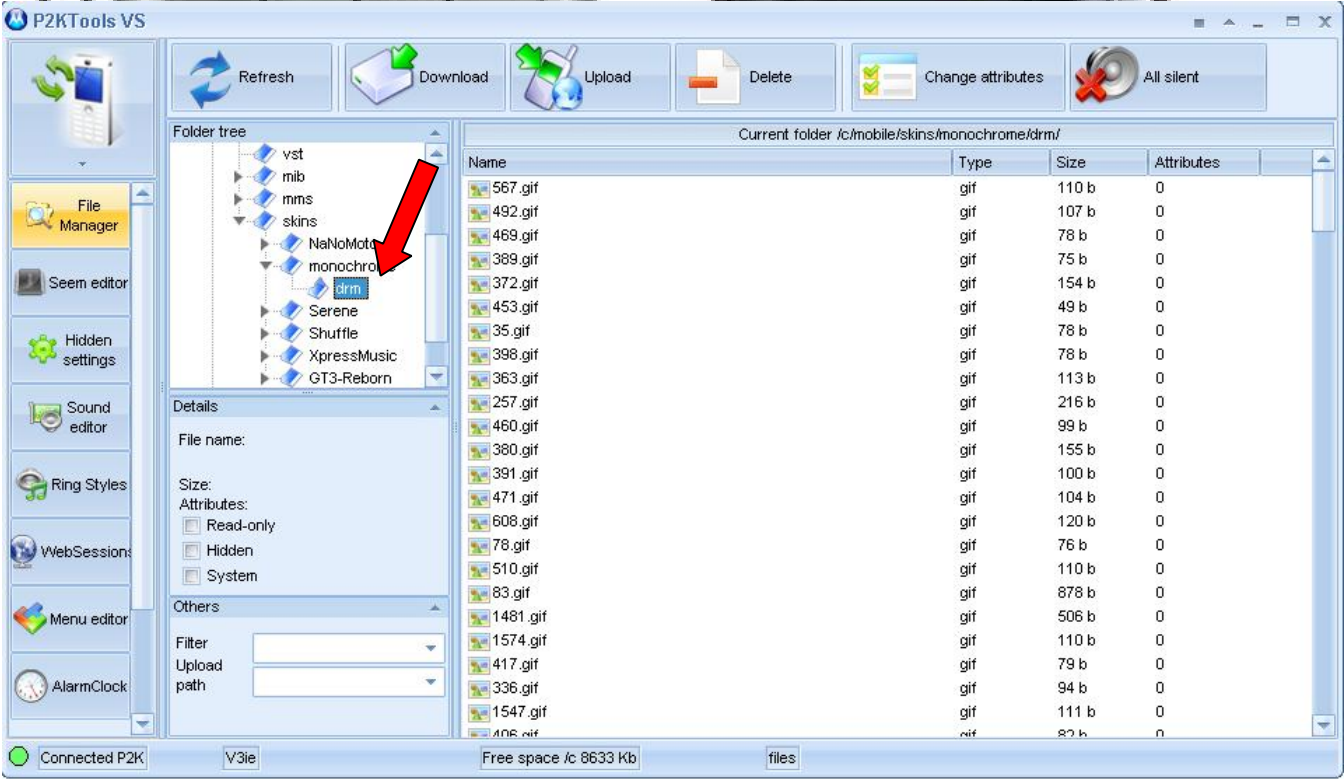
> Mid Transfer

Elf for transfer your java application via bluetooth
Buat transfer applikasi java ato game lewat bluetooth



> DrmChanger

Made for beauty, run it or Add in auto.run. So you can use your favoite DRM in your skin.
Put your drm in folder skin/name of skin
Exo
c/mobile/skins/monochrome/drm



The drm icon numbered according in drm Map. U can extract drm icon from flash file using DRM Port
Bisa buat ganti DRM bersamaan dengan ganti skin, icon drm ditaruh spt gambar.
ELF yang sangat keren untuk pecinta skin. ☺

> Sokoban, IT, Mine, Pyramid, Qiche, smiles

Elf logical game, I love this game ☺



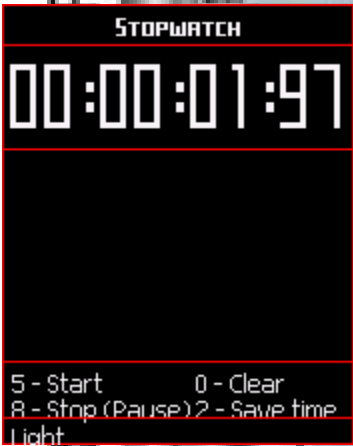
>Dictaphone

ELF for recording, like dictaphone java apps but in Elf version



> Stopwatch

You should know what the function



Ati2 mati lampu. Hehe..

Stopwatch yang aneh

> Backupper

Elf to created backup. SMS, phonebook, PDS, etc
Move this ELF to memory card for perfectly work

> **Infograph**

Informers but with graphic picture, set the configuration on Infograph.cfg
Use ELF cfg editor to edit icon location

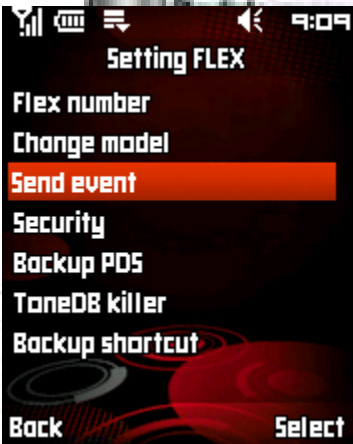


> **Flex**

To change name of flex, phone model, also to kill DB tone (fixing blank ringtone), etc

Restart your phone after making changes.

Klo ada ringtone blank. Bisa pake tone DB killer yang integrated di flex.elf ini



> **Screener**

Elf for making screenshot of our phone, run it.

Press camera button, so your screenshot will save on b/screenXX.bmp

Press # to unload

Buat bikin screenshot, run, trus pencet tombol smart

Gambar kesimpen di b/screenXX.bmp

Tekan # buat nonaktifin screener

> **Seem Editor**

For editing seem, easily edit your seem without PC

Buat edit Seem, mau reset Lifetime? Cukup pake elf ini. Hoho.. ©



> Hex editor

ELF for editing hex value, integrated for edit *.cfg from MotoCMD

HexEditor by am2804

00000000	00	01	02	03
00000000				
00000004				
00000008				
0000000C				
00000010				
00000014				
00000018				
0000001C				

s=0b; page=1/0; HEX

> Illumination

Made for beauty, side light will blinking when press keypad

Elf biar nanti HP nyala2 pas mencent tombol. Keren klo dipake malem2. Hehe..

> WP Changer

After run it, Automatic change wallpaper every ± 30 minutes

Save your wallpaper in c/mobile/picture/wpc

Should be in 176x220 and jpg format. Max allowed is 45 picture

Wallpaper gonta ganti otomatis



>Memorandum+Text show

Elf for showing notification text in home screen. The setting in memorandum and txt show to showing the text.



5. Extra Menu

To Show hidden menu, hold right softkey button you'll see this list. Need add extramenu.elf in auto.run

Tahan tombol kanan di home screen sampe keluar menu ini, aktifin dulu extramenu.elf



You can simply restart your phone, run motoCMD, or any other menu. It's working like a special shortcut

The configuration save on ExtraMenu.res edit it via notepad

6. MotoCMD

Powerfull ELF Phone manager (Like MiniComander), capable to cut, copy, paste, change file attribute, etc.

You can send any file via bluetooth.

It have Faster access file!!!!

Run it via Menu>Tools>MotoCMD or press smart key



MotoCMD also can run ELF application by press select on *.elf file

Klo ada elf yang ga ada di list elf runner, bisa di jalnkan dari motocmd ini, nt tinggal pencet select di file*.elfnya

And with additional plugin, so by press select on the file you can get other function (extMGR).

IF YOU DIDN'T ADD EXTMGR IN AUTO.RUN, YOU NEED TO RUN EXTMGR FROM ELF RUNNER FIRST to make the **PLUGIN WORK.**

*Coz I think extmgr function will consume more battery, so I din't put it on auto.run. I just run it when I need it.

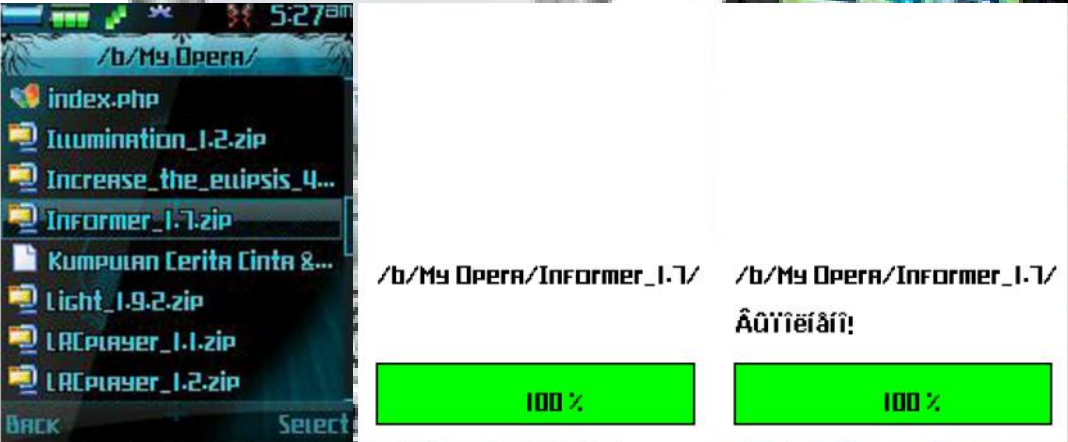
➤ Press select on JPG, JPEG, BMP, PNG, GIF, EMP you will see the picture. Like picture Viewer, but it's faster than Java Image Viewer or default Multimedia>Picture



Press joystick(up and down) to switch to other picture, press green key to set the picture as wallpaper
Right softkey to show name file.

➤ Press select on *.fpa file, so it will patch your FW online without PC
Still testing, I'm not responsible if you got reboot after patching

➤ Press select on zip file, so it will automatic Unzip the file
Wait untill the notification say Finished! Or Succes! (in rusian language, see the screenshot)



Not for BIG FILE!!!

➤ Press select on *.cfg file, it will open on Hex Editor



➤ Press select on *.mid or *.amr file, so it will played



Press
1 to stop
7= volume down
9=volume up

➤ Press select on *.ini will be edit using initools
But it's not support for big ini files.... Will error and phone need reboot.

➤ Press select on txt file so you can read the text



➤ Press select on *.ski files it will be installed in your phone
It's very easy to installing new skin without PC, just copas your skin files to memory card than run extmgr and motocmd to install skin. Make sure you have enough memory space in phone.



You will seee "Installing..." text. Wait.. Than
Press Yes to restart your phone, than enjoy your new skin ☺

➤ Press select on *.mp3 or *.m4a file so the music will played by pp_Lyrics 1.6.4 (After press select, need time to load, wait and be patient...)
It's work like Tunes_Irc or LRCPlayer but cannot create playlist, the configuration of lyrics is same.



*=For hide

More ELF will more consume battery, so if you wanna get more battery life Remove some unnecessary elf from auto.run. Exp : extmgr, ExtraMenu, LRCPlayer, or Actdesk
Run That Elf only when you need that. ☺

There are many other ELF application available, but I just put what it's needed by my self and of course working good from phone memory...

BIG Thanks for all ELF developer that make our MOTO keep Update and GREAT!!!! ☺



Modded In Indonesia
Kalimantan Barat
Borneo Island

ritza_II@yahoo.co.id