

DBTEL MOBILE SERVICE TOOL USER MANUAL

Ver: 3.05A+

Department:	DBTEL Service Center
Data:	13-April-2005

HISTORY

Version	Data	Author	Check	Note
3.01A		Vicky		
3.02A	13-Jan-2005	Vicky	Yaya	1
3.03A+	14-Mar-2005	hoya		1
3.04A	23-Mar-2005	hoya		1
3.05A	05-Apr-2005	hoya		1
3.05A+	13-Apr-2005	hoya		1

Notes:

1. If you have some questions ,please contact us:

E-mail:

Hoya2000_fu@dbtel.com.cn

Sampinger_jing@dbtel.com.cn

IMPORTANT NOTICE

Document Control

Copyright © 2005 DBTEL, Inc.
All rights reserved.

Every effort has been made to ensure that the information contained in this document is accurate at the time of printing. However, the software described in this document is subject to continuous development and improvement. DBTEL Service Center reserves the right to change the specification of the software. Information in this document is subject to change without notice and does not represent a commitment on the part of DBTEL. DBTEL accepts no liability for any loss or damage arising from the use of any information contained in this document. The software described in this document is furnished under a license agreement and may be used or copied only in accordance with the terms of the agreement. It is an offence to copy the software in any way except as specifically set out in the agreement. No part of this document may be reproduced or transmitted in any form or by any means, electronic or mechanical, including photocopying and recording, for any purpose without the express written permission of DBTEL.

CONTENTS

1. Setup & Run Program

- 1.1 Seed Time
- 1.2 Setup
- 1.3 Run Program

2. Function Tool

- 2.1 IMEI Function
- 2.2 HandLock Function
- 2.3 ReWrite Function
 - 2.3.1 Backup Tables
 - 2.3.2 Rewrite Tables
 - 2.3.2.1 Scanner Mode
 - 2.3.2.2 KEY IN Mode

3. SW Upgrade

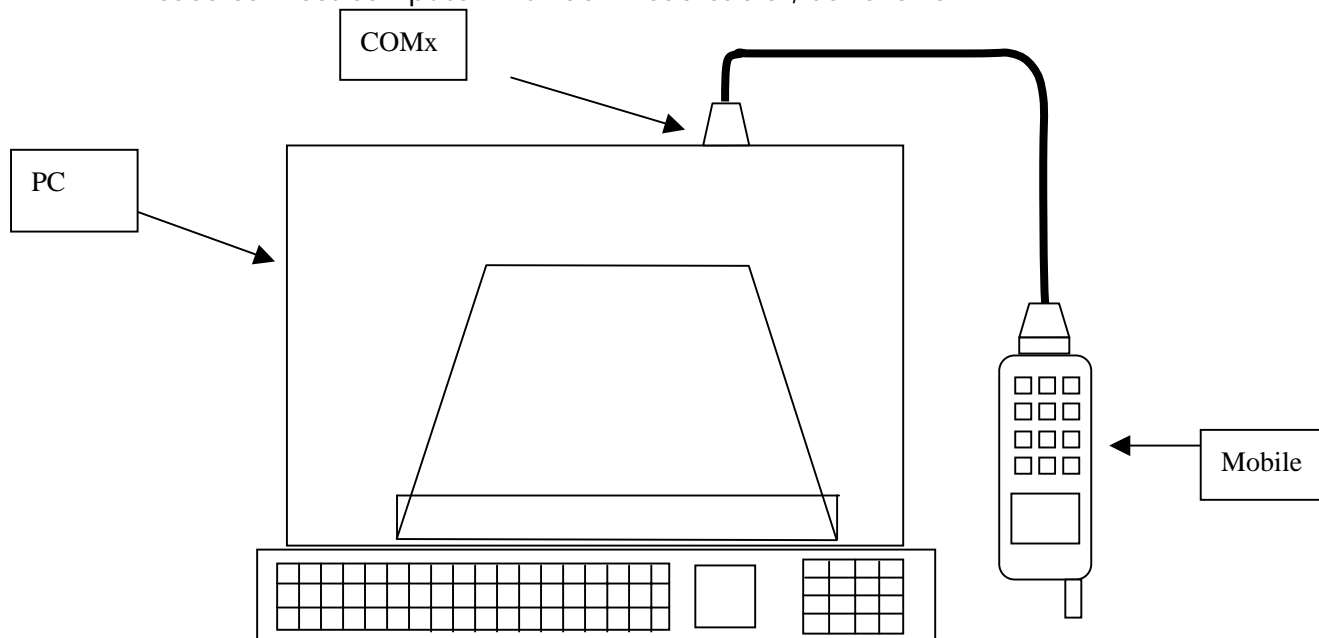
- 3.1 SW Upgrade + Backup Mobile Tables(Suggest)
- 3.2 SW Upgrade + No Backup Mobile Tables

4. ER DOWNLOAD TOOL

1. Setup & Run Program

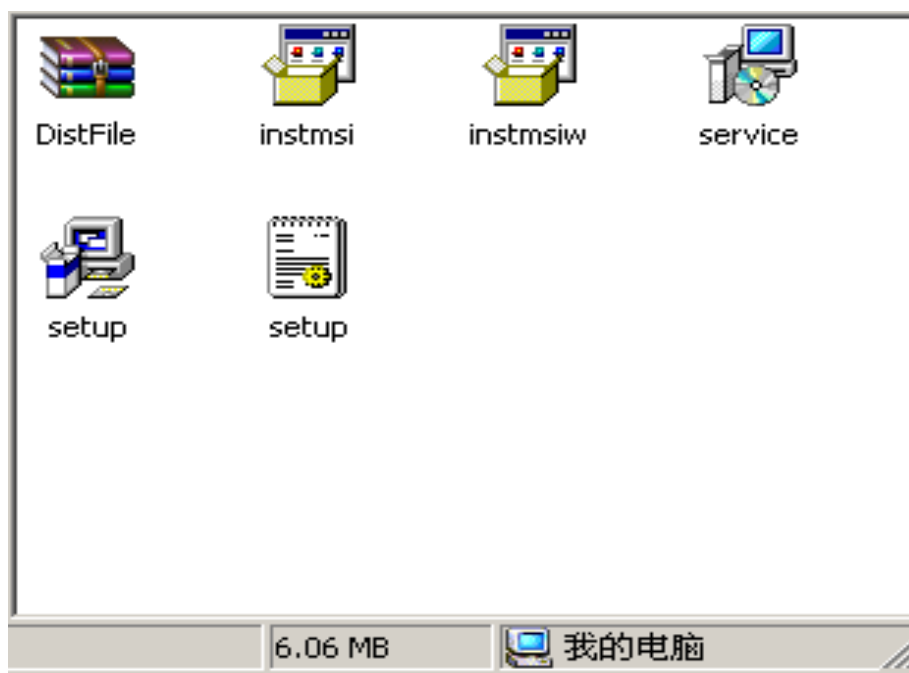
1.1 Seed Time

Please connect computer with download cable , as follows:



Sketch Map:

Check whether there are 6 files in "Setup files". (figure 1)



1.2 Setup:

- Click the "**setup.exe**" twice to install the program as follows (figure 2).
- If you want to change the program directory, please click **Brower** button.
- Click **Finish** button to complete the setup process.

Sketch Map:

Figure 1

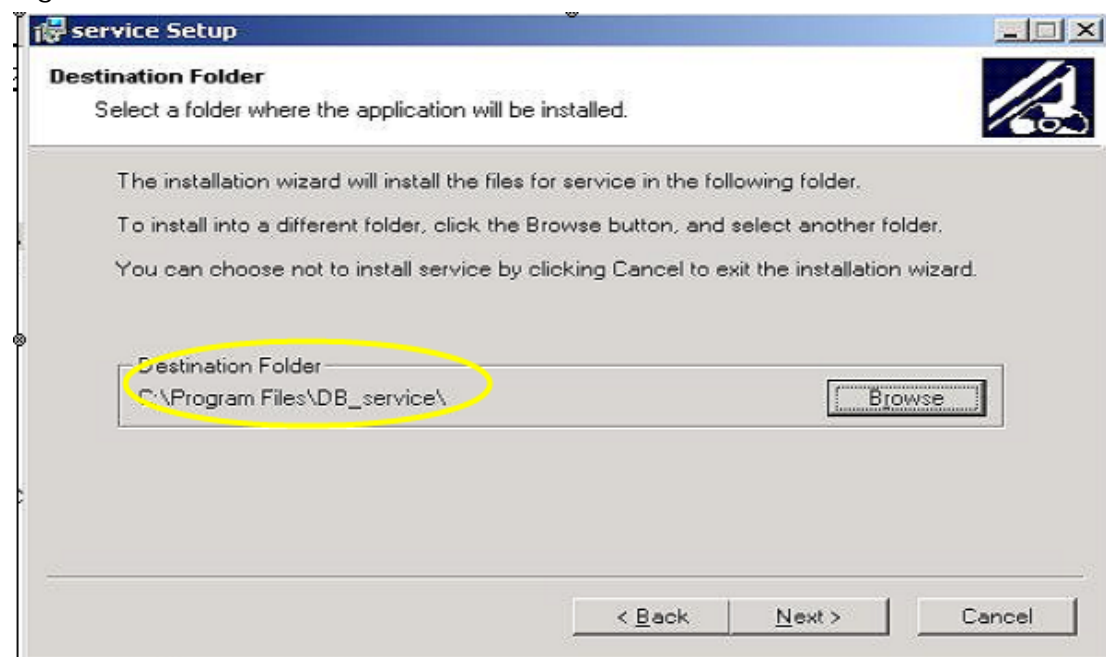
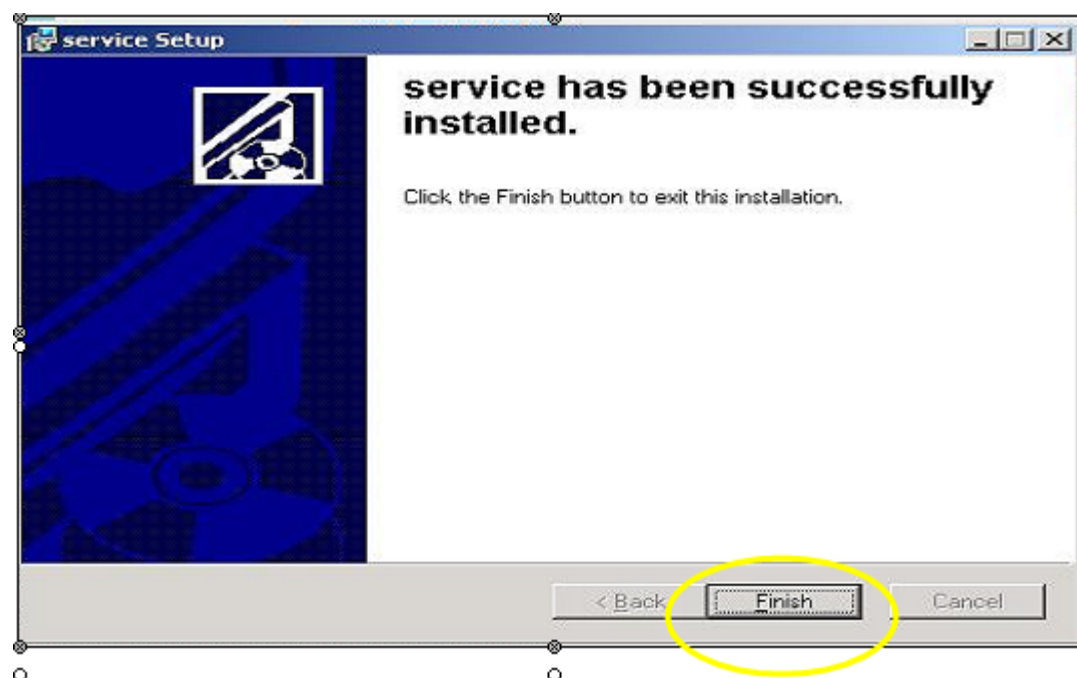
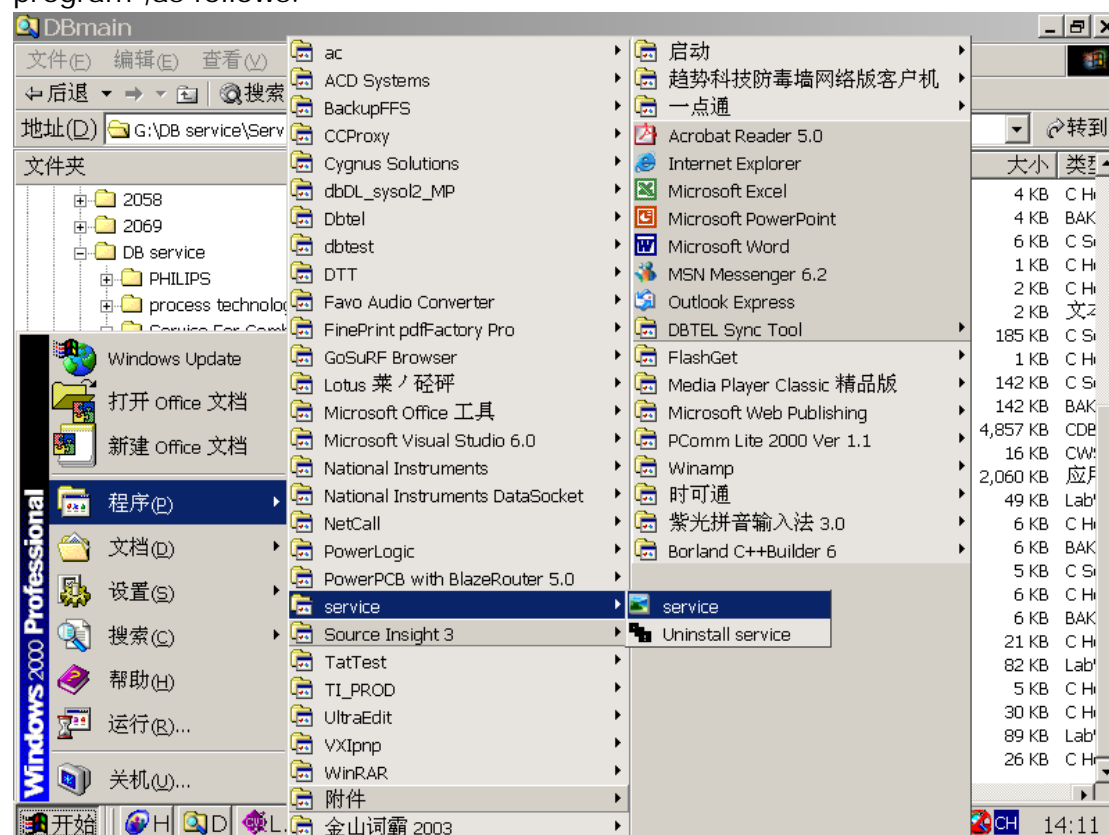


Figure 2

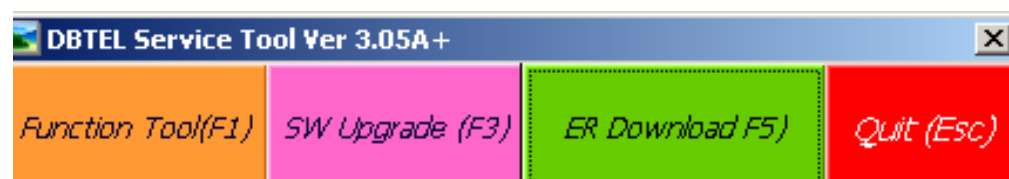


1.3 Run Program:

Start --- Programme --- service --- ,press the "**service**" key to run the program ,as follows.



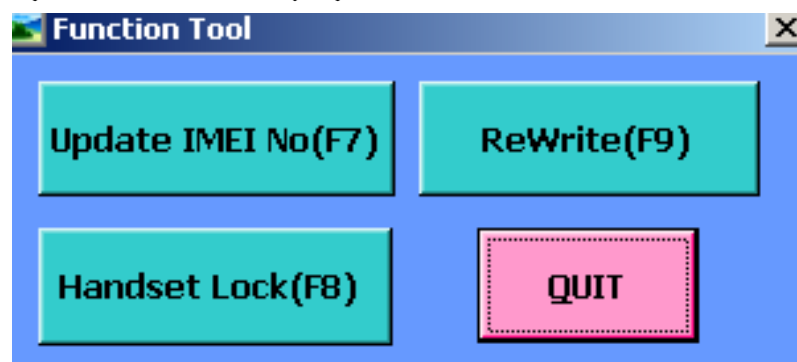
Then, the main panel will be displayed below:



2. FUNCTION TOOL

Press the "**Function Tool**" key on the main panel or press the hotkey "**F1**" open the **Function Tool** panel. There are three functions :

- 1) **Update IMEI No (F7)**
- 2) **ReWrite (F9)**
- 3) **Handset Lock (F8)**



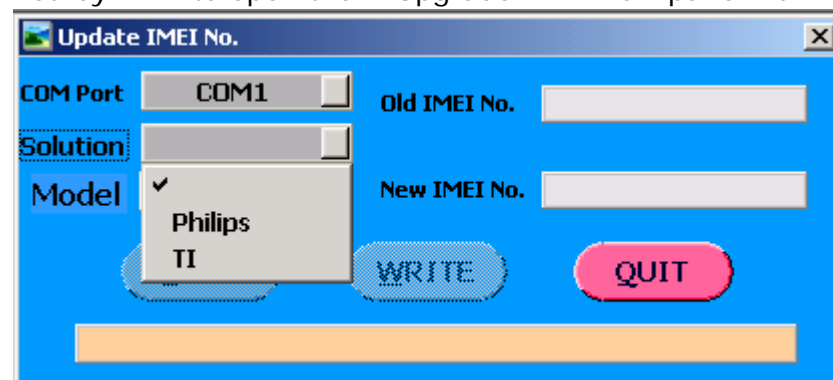
Notes:

Handset Lock function cannot be used for TI Solution yet!

2.1 IMEI Function

This tool is used to read the IMEI No. of your mobile.

Click "**Update IMEI NO**" button on the Function Tool Panel or press the hotkey "**F7**" to open the "Upgrade IMEI No." panel. It will display as follows:

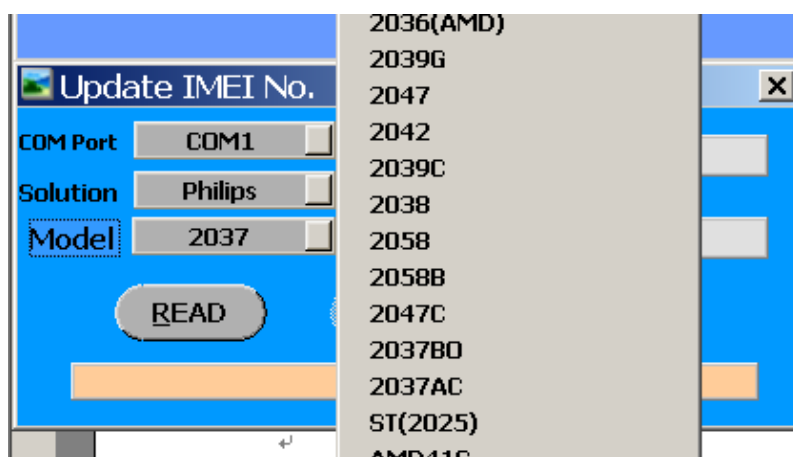


- 1) **COM Port** : select the right com port.
- 2) **Solution** : select the solution: **Philips** or **TI** .

Philips Model :

6638,6656,6218(ST),6218(Micron),6228(ST),6228(AMD),6568,8036,J7,6588C,J1,M7,M9,8036C,6669,J2,6668(ST),6668/8038(AMD),D5/J6/J9

- 3) **Model** : Choose the corresponding mobile model.

**Notes:**

If you choose TI Solution, then the Model button will be non-visible! That is, you need not choose model for TI Solution.

The example below we used TI Solution models!

Operation Steps:

- Please select the right com port, Solution and the corresponding mobile model.
- Click the "READ" key, then it will ask you to switch on your handset ("Plus turn on phone..."), as follows (figure 1).
- Plug the DHFA into the handset and turn on your mobile.
If successfully read, it will display the corresponding IMEI No. in the text box (Old IMEI No.) . (figure 2)
- Click "QUIT" key to quit this function.

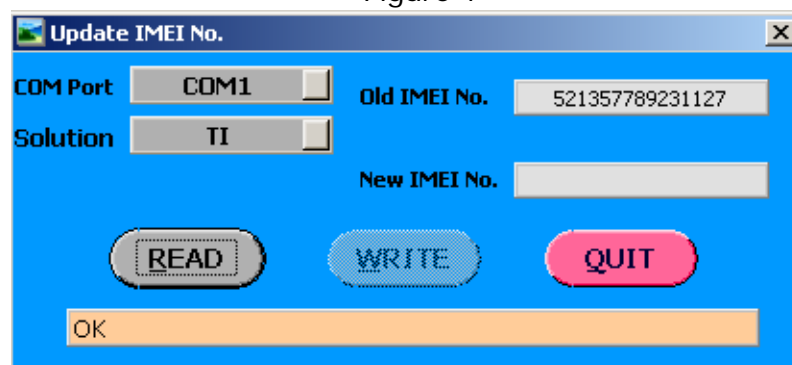
Notes:

This tool has forbidden the write function! If you want to use the write function, please contact us!



Please turn on your mobile

Figure 1



2.2 Phone Lock Function

This tool is used to unlock your mobile!

Click "**Handset Lock**" on the Function Tool Panel or press the hotkey **F8** to open the Phone Lock Panel.

1) **COM Port** : select the right com port.

2) **Solution** : select the solution: **Philips** or **TI** .

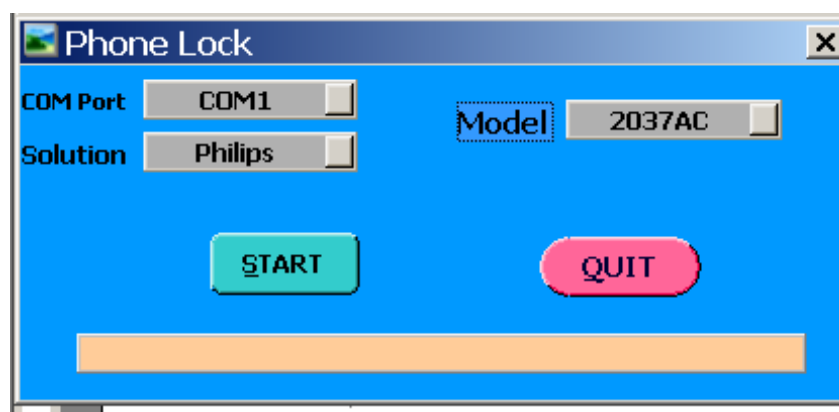
Philips Model :

6638,6656,6218(ST),6218(Micron),6228(ST),6228(AMD),6568,8036,J7,6588C,J1,M7,M9,8036C,6669,J2,6668(ST),6668/8038(AMD),D5/J6/J9

3) **Model** : Choose the corresponding mobile model.

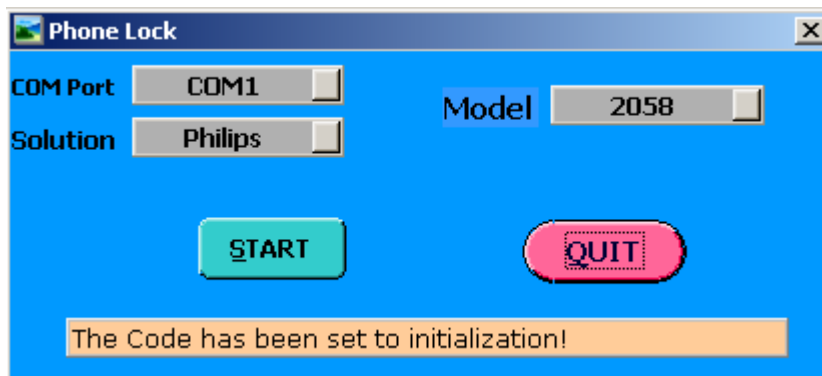
Notes:

Handset Lock function cannot be used for TI Solution yet!



Operation Steps:

- Please select the right com port, Solution, Model.
- Click **START** button, it will ask you to switch on your handset.
- Plug the DHFA into the handset, and then turn on the mobile. Program will unlock the locked handset.



2.3 ReWrite Function

This tool is used to backup the mobile tables or rewrite the tables into your mobile!

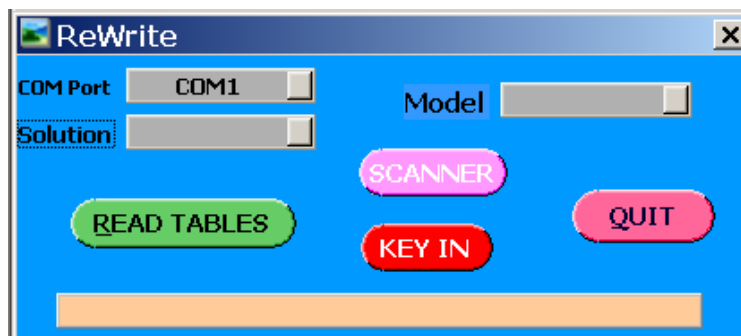
These tables will affect your mobile performance, so please be care!

Tables are:

Production Tables, IMEI No., Battery Table, RF Tables

Click the **ReWrite** button on the Function Tool Panel or press hotkey **F9** to open the ReWrite Panel.

The buttons **COM Port/Solution/Model** have described before! Please refer to previous chapter.

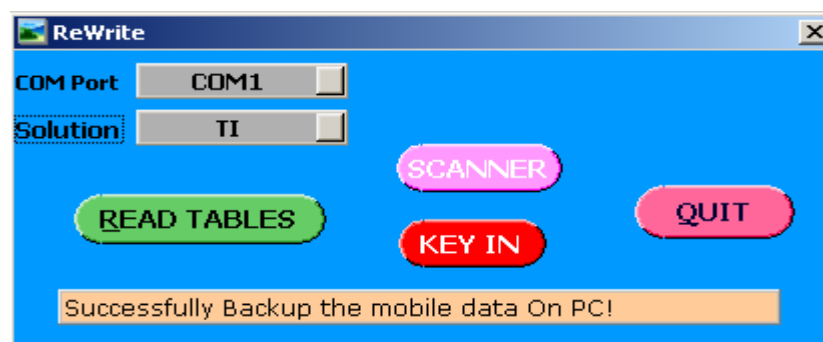


2.3.1 Backup Tables

This function is used to backup your mobile tables.

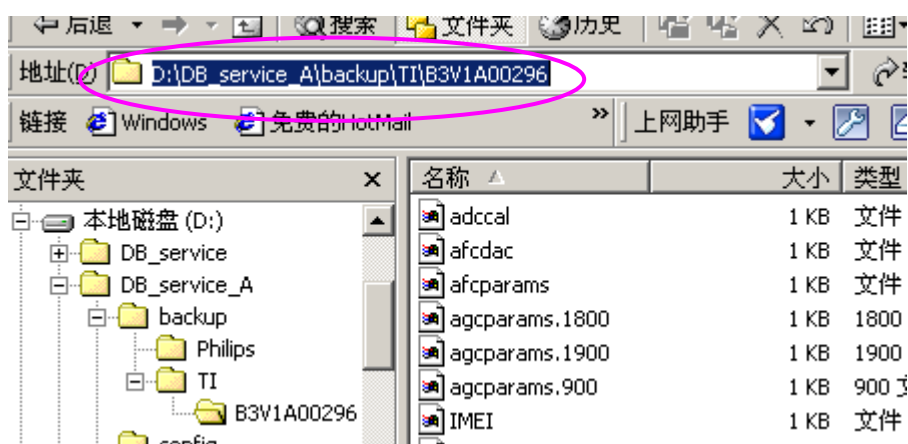
Operation Steps:

- Select the right Com port, Solution and Model.
- Click **READ TABLES** button, it will ask you to turn on your mobile!
- Plug the DHFA into the handset, and then turn on the mobile.
- If successfully, the tables will be backed up to your PC!



Tables Save Path:

Programme directory --- backup --- Solution ----....



2.3.2 Rewrite Tables

This function is used to rewrite the tables backed up into your mobile.

Notes:

Before use this tool, please be sure you have backed up the mobile tables to PC successfully, and the tables haven't be deleted yet!

There are 2 modes to get the corresponding tables to rewrite.

1) Scanner Mode:



Use SCANNER to scan the serial No. of your mobile to get the corresponding tables which should be rewritten.

2) KEY IN Mode:



User input the serial No. of your mobile to get the corresponding tables which should be rewritten.

2.3.2.1 Scanner Mode:

Operation Steps:

- Select the right RS232 com port, Solution and Model.
- Click **SCANNER**, then use scanner to scan the mobile serial No.
- If successfully get the mobile serial No., program will clew you to turn on your mobile!
- Plug the DHFA into the handset, and then turn on the mobile.
- Program will rewrite the tables into your mobile automatically.

2.3.2.2 KEY IN Mode

Operation Steps:

- Select the right RS232 com port, Solution and Model.
- Rightly input the serial No. of your mobile which you have backed up tables to PC.

- If the mobile serial No. you input is right, the program will clew you to turn on your mobile. (figure 1)
- Plug the DHFA into the handset, and then turn on the mobile. Program will rewrite the tables into your mobile automatically.(figure 2)
- If the mobile serial No. you input is **NOT** right, the ERROR message dialog box will clew you to retry! (figure 3)Please check the serial No. you input, and be sure the mobile tables has been previously backedup successfully!

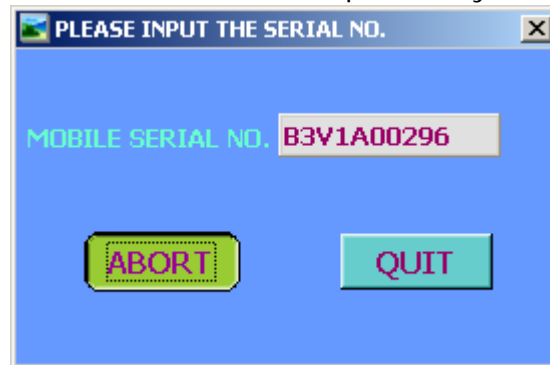


Figure 1

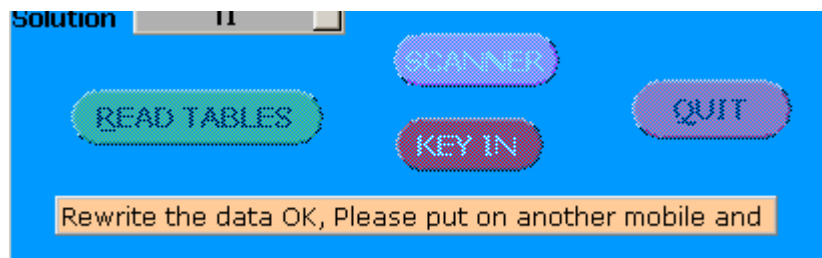


Figure 2

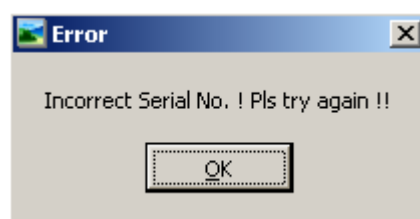


Figure 3

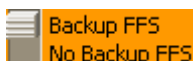
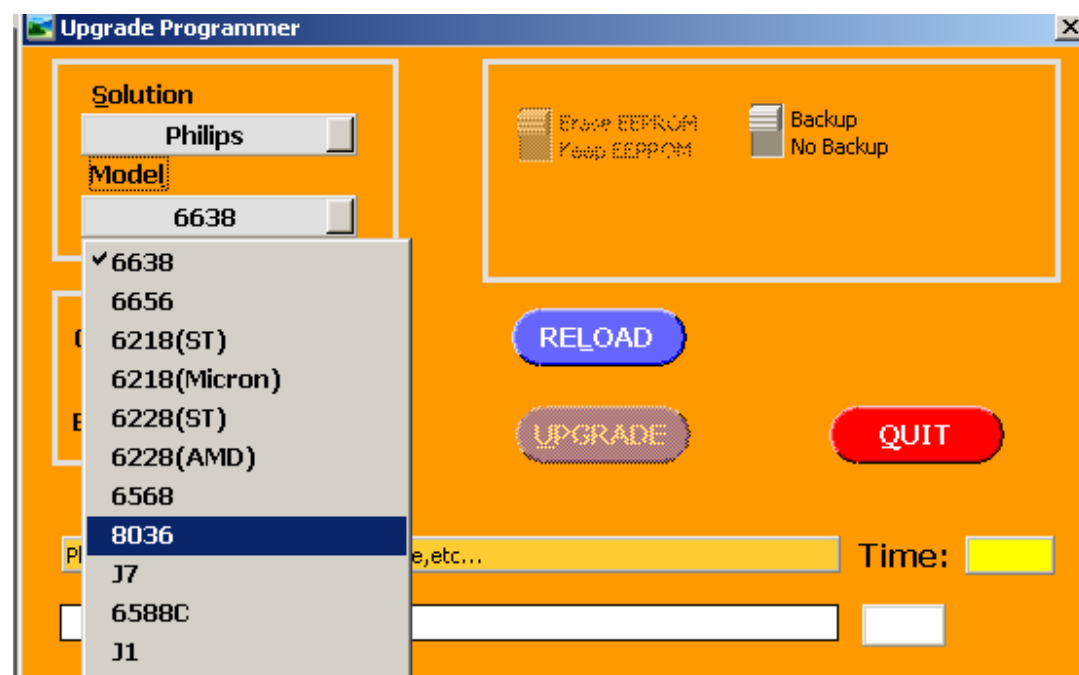
Clew:

If the rewrite failed in SW Upgrade process, user can use this function to rewrite the mobile tables!

3. SW Upgrade

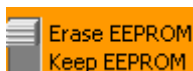
This function is used to upgrade the mobile code software.

Click "**SW Update**" key or press "**F3**" to open the "Upgrade Programmer Panel".



This button is used to choose whether user need backup mobile tables or not!

- 1) Select **Backup FFS** or **Backup**, program will backup mobile tables first, and then upgrade code software, after successfully download SW, program will rewrite the tables backed up previously!
- 2) Select **No Backup FFS** or **No Backup**, program will not backup or rewrite mobile tables, **ONLY** upgrade code software!



This button is used to choose whether user need erase the whole flash or not!

- 1) If draw or **Erase EEPROM**, program will erase the whole flash.
- 2) If NOT draw or **Keep EEPROM**, program will only erase the flash size as big as SW.

Suggest user "Backup mobile tables" + "erase the whole flash".



This button is used to load the mobile software or Language Library

For Philips Solution:

If the size of selected file > 1M Bytes, program will see it as code software file!

If the size of selected file < 1M Bytes, program will see it as Language Library file!

For TI Solution:

This version cannot upgrade Language Library!

Note:

Be sure that the software or Language Library which you select is in accord with you handset.

DOWNLOAD Language Library is added for the need of globe launch.



This button is used to upgrade SW or Language Library!

(Below Use TI Solution example)

3.1 SW Upgrade + Backup Mobile Tables (Suggest)

Operation Steps:

- Select the right RS232 com port, Baudrate, Solution and Model.

Notes:

For TI Solution:

406250 bps and 812500 bps Download speed need **special download cable!**

- Select **Backup FFS** to backup mobile tables!
- Click **RELOAD** button to load mobile software! (figure 1)

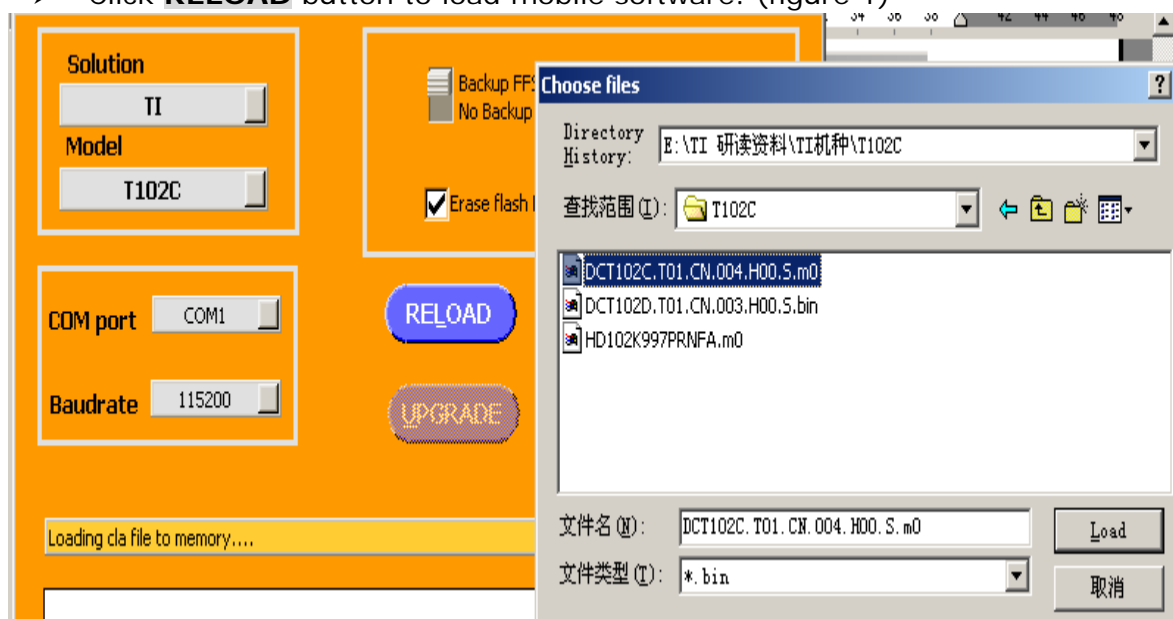


Figure 1

Notes:**For TI Solution:**

After load the SW, program will **compress** the SW data. This will use some time, please **WAIT!**

- Plug the DHFA into the handset, and click the **UPGRADE** button. It will ask the user to turn on mobile to backup tables!



Please turn on phone(backup) Time:

- Turn on your mobile to backup mobile tables to PC!
- After successfully backup mobile tables, it will ask user to turn on mobile again to upgrade SW, then turn on the mobile again to start downloading!



Plaese turn On Mobile (download) Time:

Downloading...



Download Mobile Software Time:

23.4%

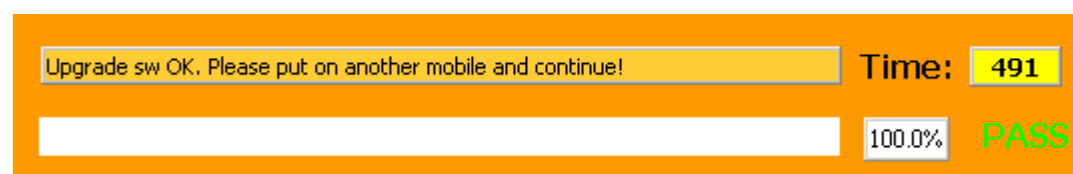
- After successfully downloading, program will ask user to turn on mobile the last time to rewrite the tables backuped previously. Turn on your mobile ,please. (**If TI solution ,please After successfully downloading, move the mobile from the download cable, and turn on the mobile, then Plug the download cable into the mobile and rewrite the tables backuped previously**)



Please turn on phone(write).... Time:

100.0%

- After successfully rewrite, the whole process is OK!
-



Upgrade sw OK. Please put on another mobile and continue! Time: 491

100.0% **PASS**

Clew:

If program failed to write back the data, you can rewrite the data through scan the serial No. or input the serial number by hand. Please refer to Chapter 2.3 **ReWrite Function**.

3.2 SW Upgrade + No Backup Mobile Tables**Operation Steps:**

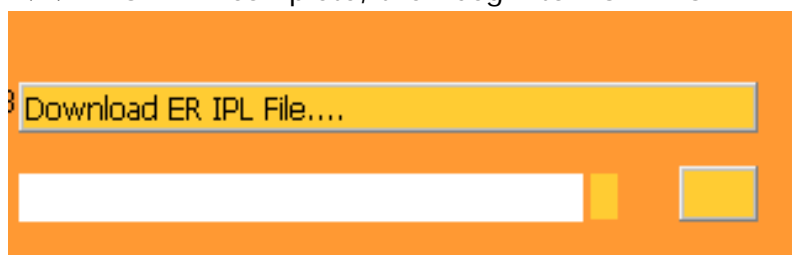
The same operation steps as 3.2 **ONLY** different choice below:

- Select **No Backup FFS** to backup mobile tables!

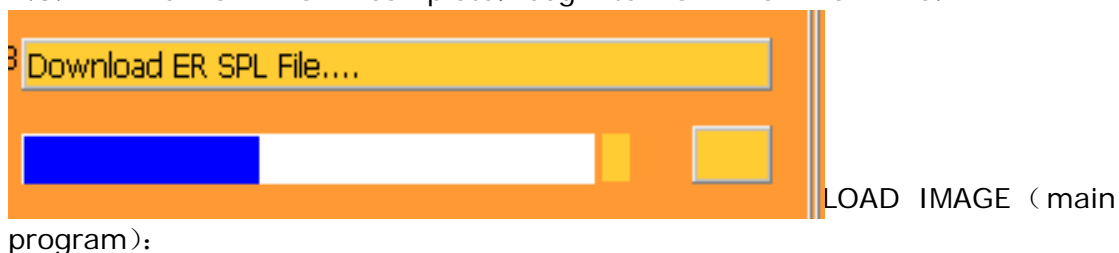
- Choose the COM port, click **UPGRADE** button. Program will ask you to turn on your mobile.



- (2) FORMAT complete, then begin to DOWNLOAD IPL file:



- (3) IPL file DOWNLOAD complete, begin to DOWNLOAD SPL file:



- If successfully "Download", "Download ERfile OK" will be displayed in the status bar. The used time and "Pass" will also be displayed in the corresponding text box.



FOR M7/M1:



If Download successful, status bar will display: “Download ER File OK. Please put on another mobile ”

